

PLOW ANGLE KIT



P/N 2890304

BEFORE YOU BEGIN

Read these instructions and check to be sure all parts and tools are accounted for. Please retain these installation instructions for future reference and parts ordering information.

APPLICATION

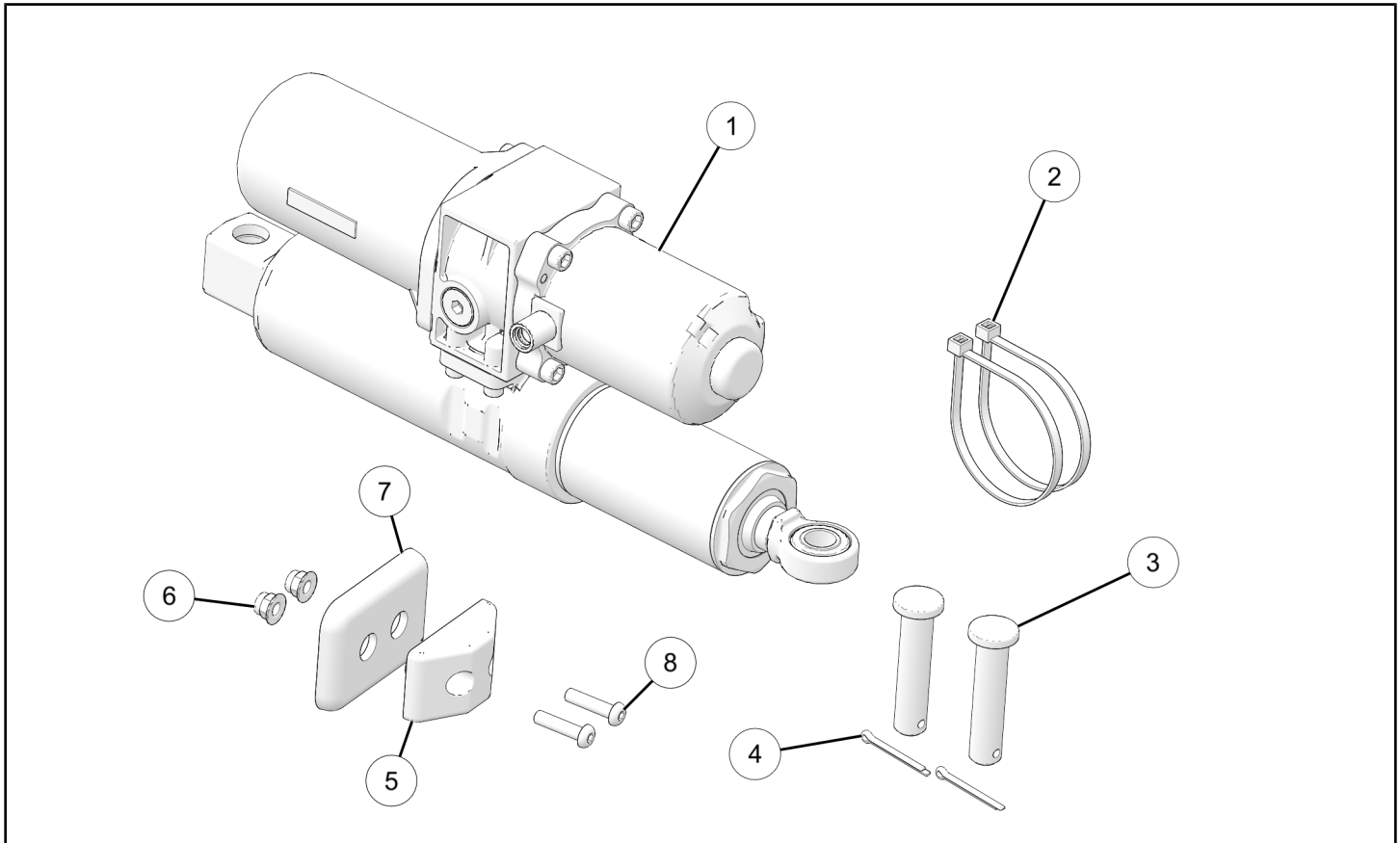
Verify accessory fitment at www.polaris.com.

REQUIRED SOLD SEPARATELY

Only parts for installation of the Plow Angle Kit are included. Prior installation of the following additional kits are also required (sold separately):

- *Plow Controller Kit*, P/N 2889769
- *Plow System (Blade, Frame, Lift Method)*, P/N 2889111, 2889112, 2890303

KIT CONTENTS



REF	QTY	PART DESCRIPTION	P/N AVAILABLE SEPARATELY	HARDWARE KIT
1	1	Plow Angle Cylinder	2517073	n/a
2	2	Cable-Tie	7080492	n/a
3	2	Clevis Pin, 14 x 63 in	n/a	2209958

REF	QTY	PART DESCRIPTION	P/N AVAILABLE SEPARATELY	HARDWARE KIT
4	2	Cotter Pin, 3 x 25 in	n/a	2209958
5	1	Damper Rubber	n/a	2209958
6	2	Nut, Hex Flange, M6 x 1.0 mm	n/a	2209958
7	1	Plate Backer	n/a	2209958
8	2	Screw, Button Head Cap, M6 x 1.0 X 25 mm	n/a	2209958

TOOLS REQUIRED

- Safety Glasses
- Pliers, Slip Joint

IMPORTANT

Your Plow Angle Kit is exclusively designed for your vehicle. Please read the installation instructions thoroughly before beginning. Installation is easier if the vehicle is clean and free of debris. For your safety, and to ensure a satisfactory installation, perform all installation steps correctly in the sequence shown.

INSTALLATION INSTRUCTIONS

VEHICLE PREPARATION

GENERAL

1. Park vehicle on a flat surface.
2. Shift vehicle into PARK.
3. Turn key to OFF position and remove key.

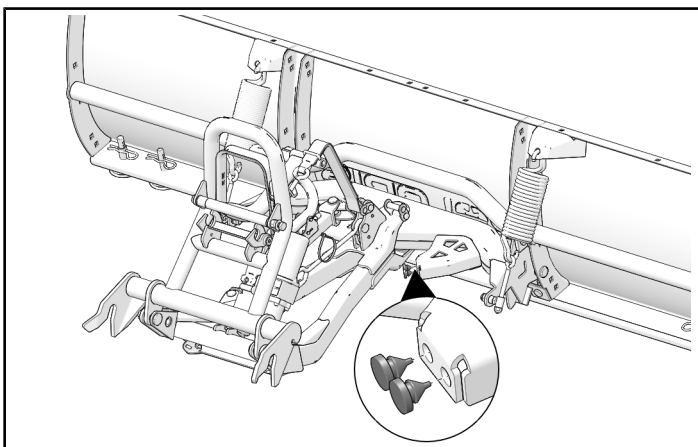
ACCESSORY INSTALLATION

RUBBER BACKER

1. Remove two rubber bumpers from passenger side of pivot.

NOTICE

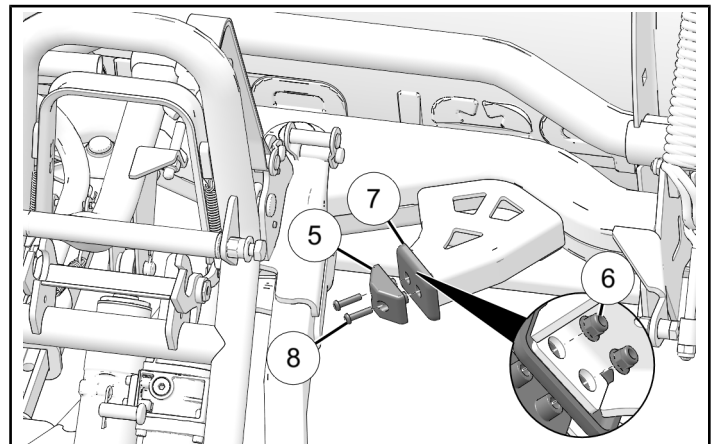
Vehicle hidden for clarity.



2. Install damper rubber (5) and plate backer (7) onto pivot with two screws (8) and two nuts (6). Torque nuts to specification.

TORQUE

Nuts (6):
17 in-lbs (2 N·m)

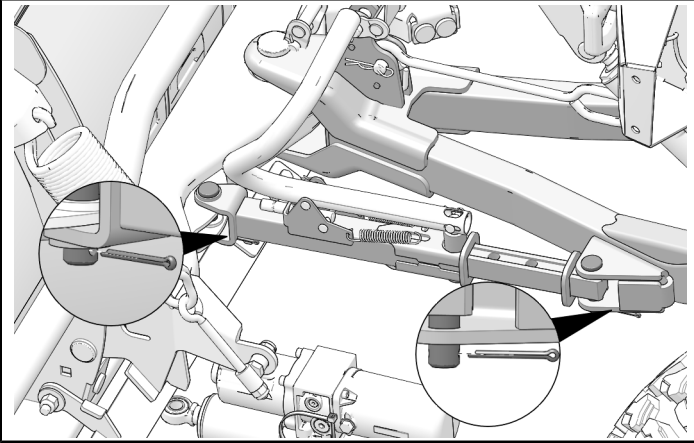


FLOW ANGLE INSTALLATION

1. Remove and discard two cotter pins and two clevis pins from each end of manual angle adjustment mechanism. Carefully slide mechanism out of plow frame brackets, then set aside.

CAUTION

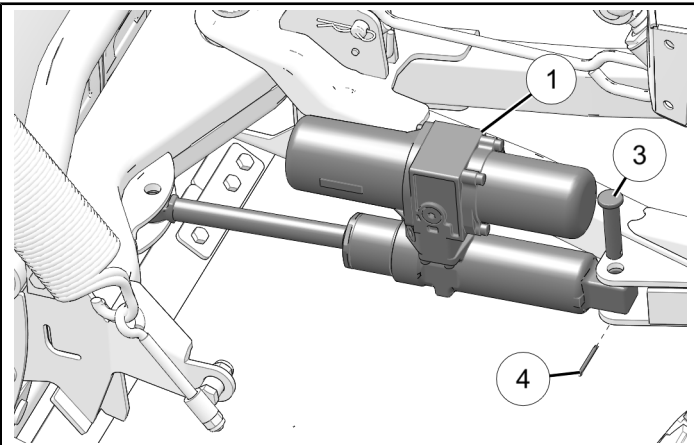
Manual angle adjustment mechanism is heavy. Support mechanism as required during removal to prevent injury.



2. Install fixed end of plow angle cylinder ① to plow frame brackets with clevis pin ③ and cotter pin ④. Bend cotter pin ④ to prevent it from falling out.

NOTICE

Make sure to install clevis pin from the top as shown.

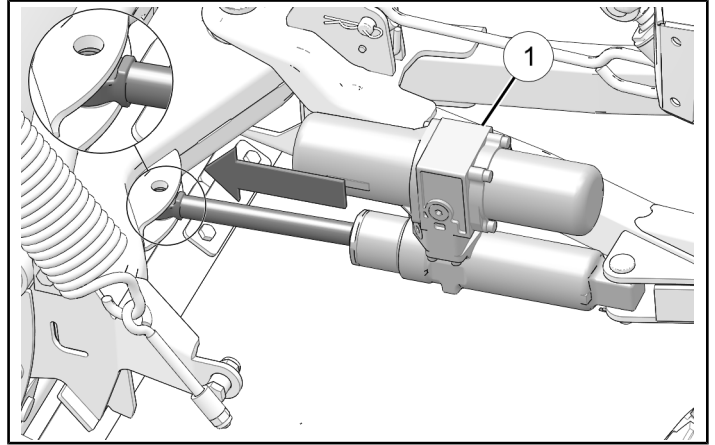


3. Join connector from angle cylinder ① to mating TILT connector from Plow Controller Kit (PN 2889769 or equivalent, sold separately).

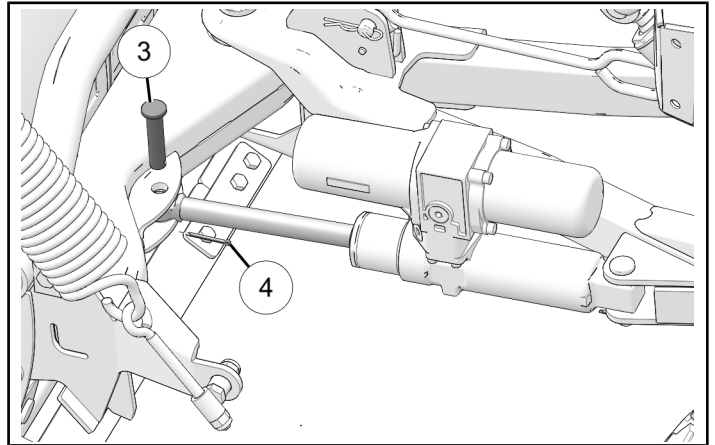
NOTICE

See Plow Controller Kit instructions for details.

4. Turn ignition switch to "ACC" position. Lift plow blade off ground high enough to move blade right and left.
5. Adjust plow ① piston by pressing the button to extend it. Make sure the piston meets the plow blade mounting holes. Turn ignition switch to "OFF" position and remove key.



6. If needed, move blade by hand blade until plow mounting holes are over piston end. Install piston end with clevis pin ③ and cotter pin ④ through plow mounting holes. Make sure to bend cotter pin to prevent it from falling out.



7. Make sure plow angle cylinder ① harness is put in place using two cable ties ③ to prevent contact with sharp edges or moving parts.
8. Turn ignition switch to "ACC" position, lower blade, then turn ignition switch to "OFF" position and remove key.