

GLACIER PLOW FRAME KIT



P/N 2889112

MISSING OR DAMAGED PARTS

Before beginning assembly, inspect the kit and its component(s) to be sure all parts and tools are accounted for and not damaged. If missing parts or parts are damaged, please contact your Selling Dealer for assistance.

If your accessory was purchased online, please contact POLARIS® customer service at **1-800-POLARIS** (US & Canada only).

APPLICATION

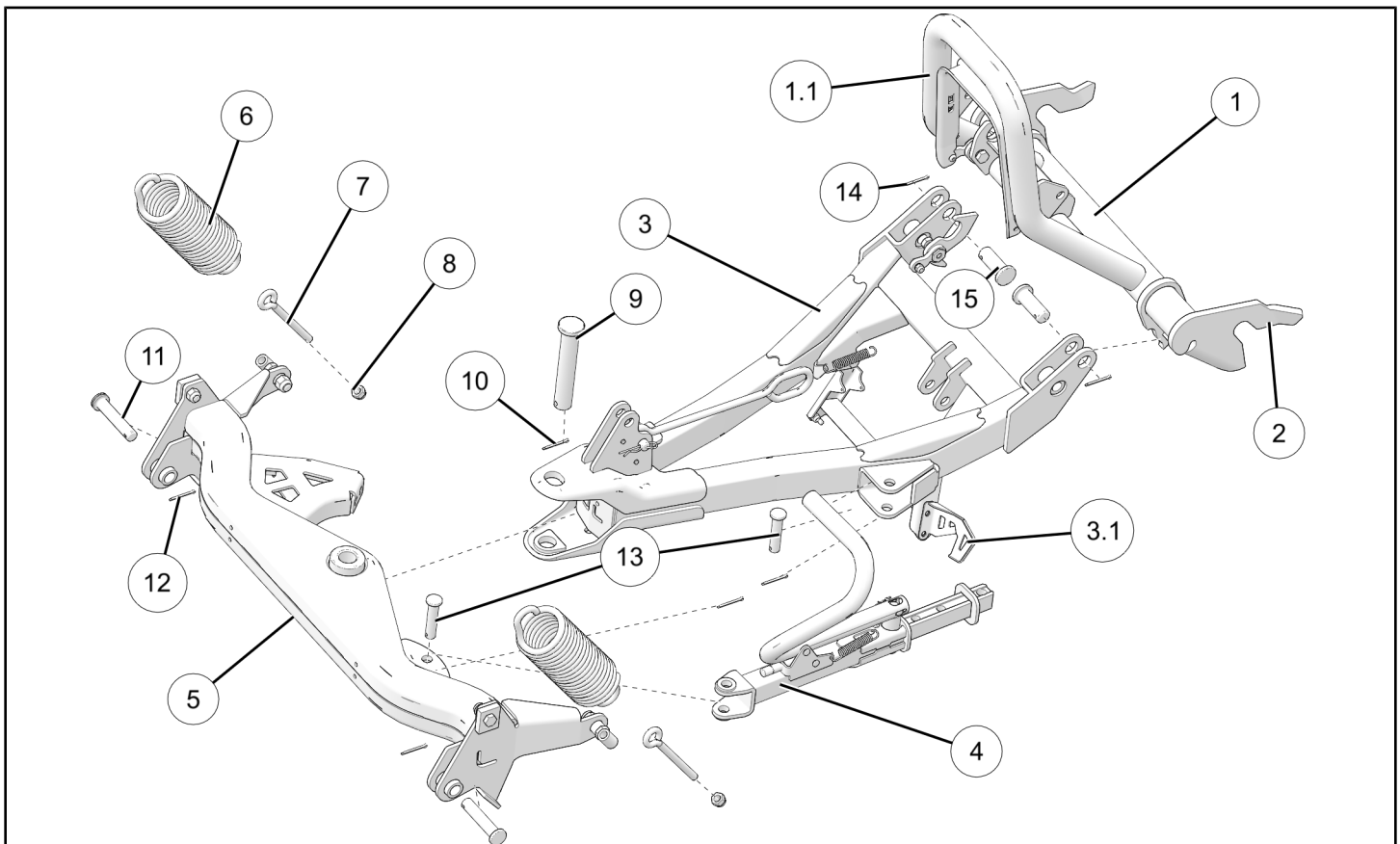
Verify accessory fitment at www.polaris.com.

REQUIRED SOLD SEPARATELY

Only parts for installation of the Glacier Plow Frame Kit are included. For complete installation, the following additional kit is required (sold separately):

- 84" Plow Blade Kit, P/N 2889111
- 84" Rubber Snow Deflector Flap Kit, P/N 2889749
- Backdrag Bar 84" Kit, P/N 2889747
- Curved Snow Deflector Kit, P/N 2889748
- Plow Markers Kit, P/N 2872726

KIT CONTENTS



REF	QTY	PART DESCRIPTION	P/N AVAILABLE SEPARATELY	SERVICE KIT
1	1	Hook Up Assembly	N/A	2209950
2	1	Hook up	2209948	N/A
3	1	Push Frame Assembly	2209947	N/A
4	1	Angle Arm Assembly	N/A	2209955
5	1	Pivot Front	2209949	N/A
6	2	Spring	2858534	N/A
7	2	Eye Bolt	N/A	2209954
8	2	Hex Nut, Nylon M10 x 1.5	N/A	2209954
9	1	Main Pin, OD 24 x 140 mm	N/A	2209952
10	1	Cotter Pin 1, Large OD 3 mm	N/A	2209952
11	2	Clevis Pin 4 Diameter 16 x 80 mm	N/A	2209954
12	2	Clevis Pin 1 OD 20 x 53 mm	N/A	2209952
13	2	Clevis Pin 2 OD 14 x 63 mm	N/A	2209955; 2209954; 2209952
14	1	Winch Link	N/A	2209953
15	1	Clevis Pin 3 OD 13 x 48 mm	N/A	2209953
16	1	R Pin, Large	N/A	2209953
17	4	Cotter Pin 2, Medium	N/A	2209952
18	1	Cotter Pin 3, Small	N/A	2209952; 2209955

TOOLS REQUIRED

- Pliers, Locking
- Socket Set, Metric
- Torque Wrench
- Wrench Set, Metric

IMPORTANT

Your Glacier Plow Frame Kit is exclusively designed for your vehicle. Please read the installation instructions thoroughly before beginning. Installation is easier if the vehicle is clean and free of debris. For your safety, and to ensure a satisfactory installation, perform all installation steps correctly in the sequence shown.

INSTALLATION INSTRUCTIONS

VEHICLE PREPARATION

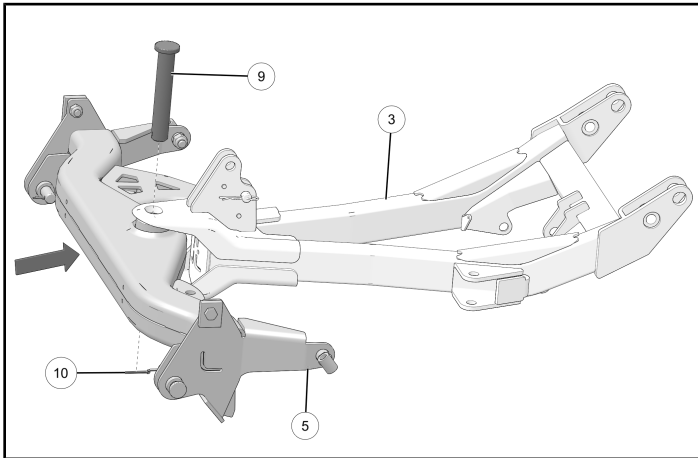
GENERAL

1. Park vehicle on a flat surface.
2. Shift vehicle into PARK.
3. Turn key to OFF position and remove key.

GLACIER PLOW FRAME INSTALLATION

PLOW FRAME ASSEMBLY

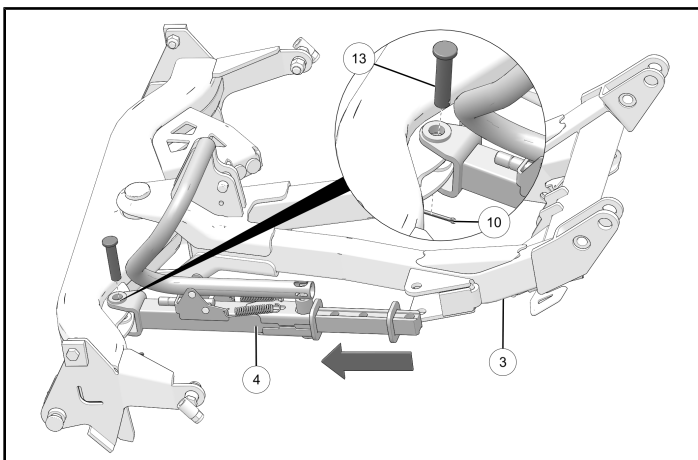
1. Position pivot front assembly ⑤ into the middle mounting holes of the push frame assembly ③. Insert main pivot pin ⑨ from above. Thread cotter pin ⑩ into the end, Fold ends into place.



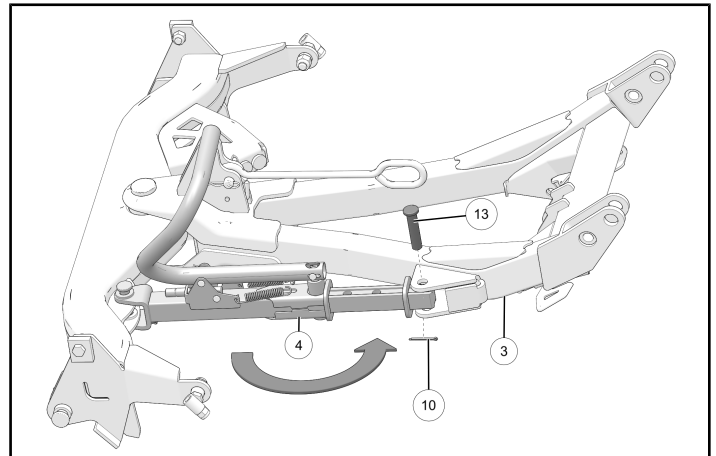
NOTICE

If you have purchased the Glacier® Pro HD Plow Hydraulic Angle System, **(Need kit numbers)**, do not install this manual angulation mechanism. Follow the instructions provided with the Glacier® Pro HD Plow Hydraulic Angle System to install the hydraulic angle system.

2. Place the angle arm assembly ④ around mounting holes on pivot front ⑤. Insert Clevis Pin ⑬, thread cotter pin ⑩ into the end, fold ends into place.



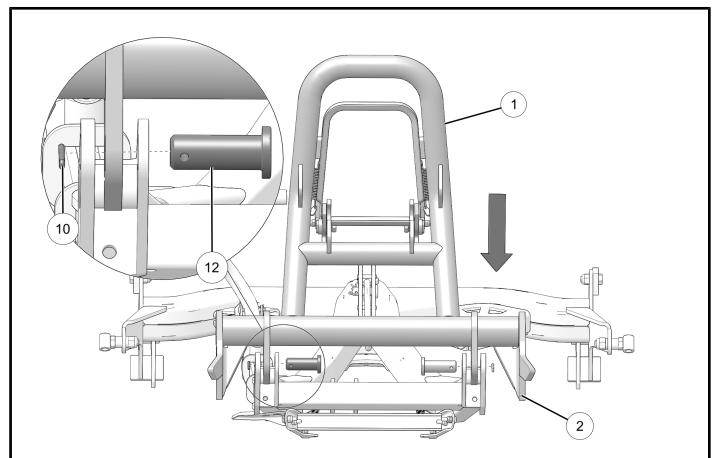
3. Place smaller end of angle arm ④ between mounting holes on push frame assembly ③. Insert clevis pin ⑬, thread cotter pin ⑩ into the end, fold ends into place.



4. Place hook up assembly ② between mounting holes on Push Frame Assembly ①. Insert clevis pins ⑫ into both sides, thread cotter pins ⑩ into the ends, fold ends into place.

NOTICE

Make sure the hook up assembly can rotate freely. Reposition the hook up pins to allow free movement.

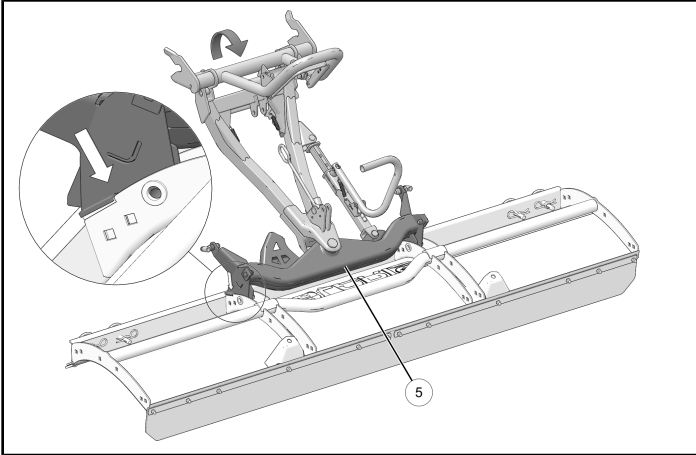


FLOW BLADE INSTALLATION

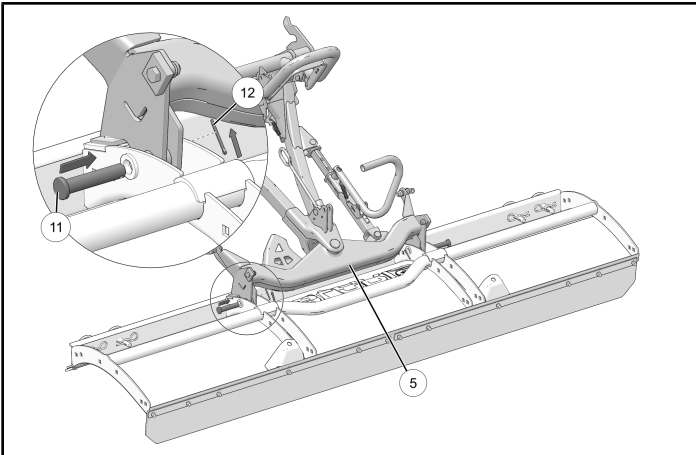
TIP

The next steps may be easier with a second person.

1. Place front side of plow blade against the ground. Place square metal pads on bottom frame of plow blade and shift until mounting holes on pivot frame ⑤ line up with mounting holes on plow blade frame.



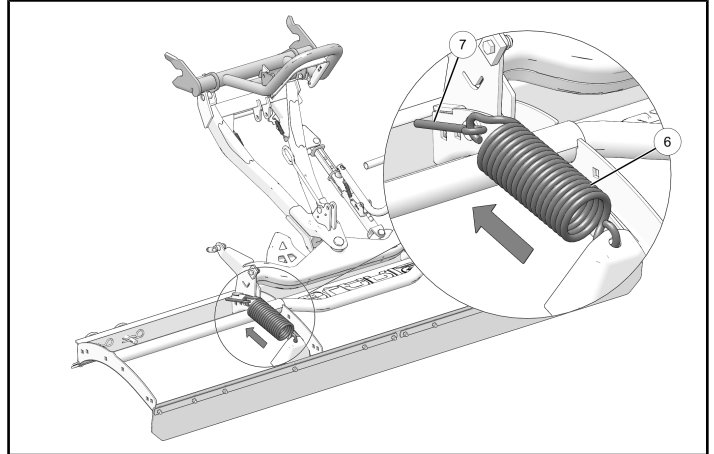
2. Install clevis pin 4 ⑪ and cotter pin ⑩ on both sides, fold ends of cotter pin to prevent slipping.



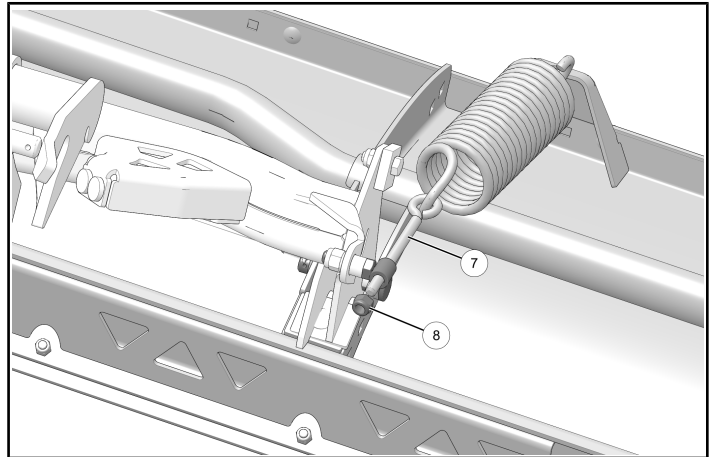
NOTICE

Right side show; left side similar.

3. Attach plow spring ⑥ to mounting hole on right side of plow blade. Keeping tension on plow spring ⑥ attach eye bolt ⑦.



4. Install threaded end of eye bolt ⑦ through mounting loop on pivot frame and install nylon nut ⑧.

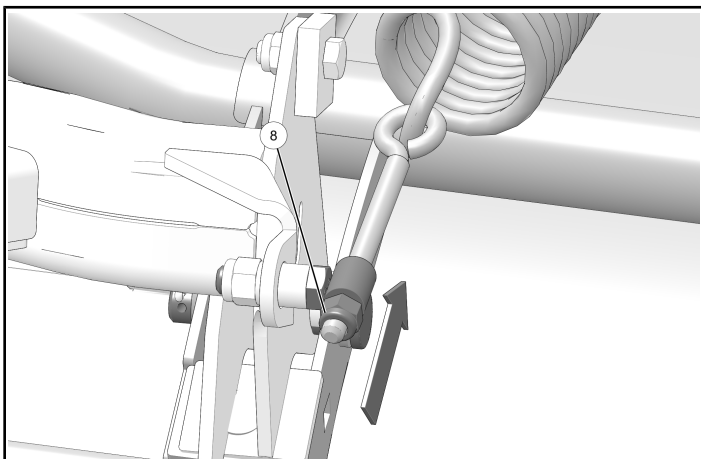


5. Repeat on other side make sure the nylon nut ⑧ is tightened the same on both sides.

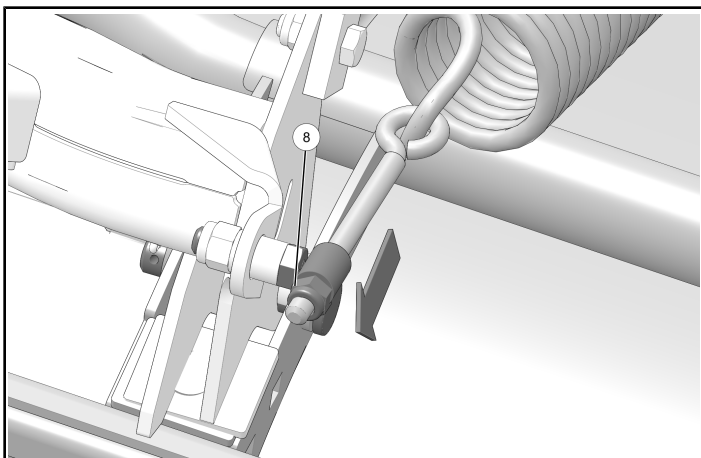
IMPORTANT

This plow blade and frame is equipped with a trip safety feature. It will rotate away from the point of impact preventing damage to the your vehicle and/or plow system, returning to a neutral position when pressure is removed. The spring tension can be changed by adjusting the nylon nuts ⑧ on the bottom of the eyebolts ⑦ equally.

6. Tighten spring pressure by tightening nylon bolts ⑧ equally.



7. Loosen spring pressure by loosening nylon bolts ⑧ equally.



IMPORTANT

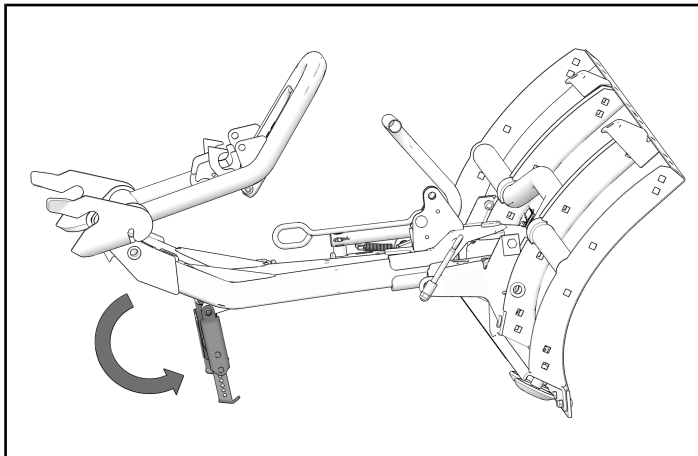
improper adjustment of nylon nuts ⑧ will prevent the trip safety feature from engaging resulting in damage to your vehicle and/or plow system.

INSTALL PLOW AND FRAME ONTO VEHICLE

NOTICE

If you purchased the hydraulic lifting system refer to Hydraulic Lift System Instruction manual for installation onto vehicle.

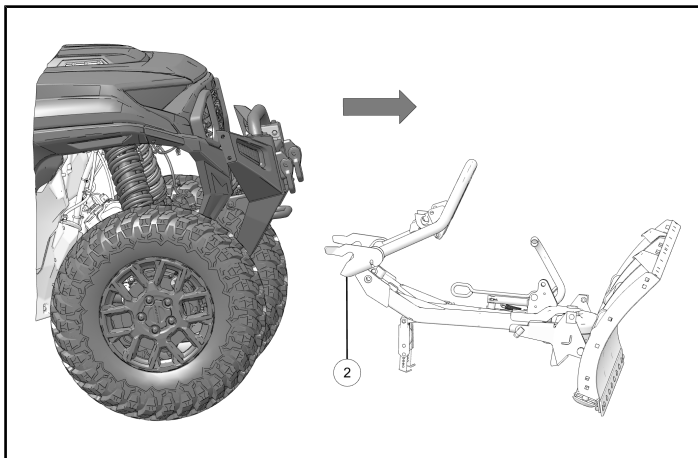
1. Pull kickstand out and rotate plow and frame to stand on it.



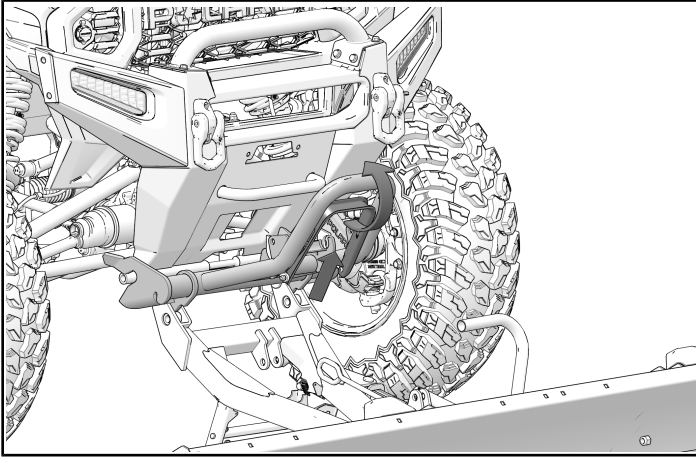
NOTICE

Kickstand may need to be adjusted to correct height for your vehicle.

2. Drive vehicle up to plow lining up front frame of vehicle with hook up assembly ②.



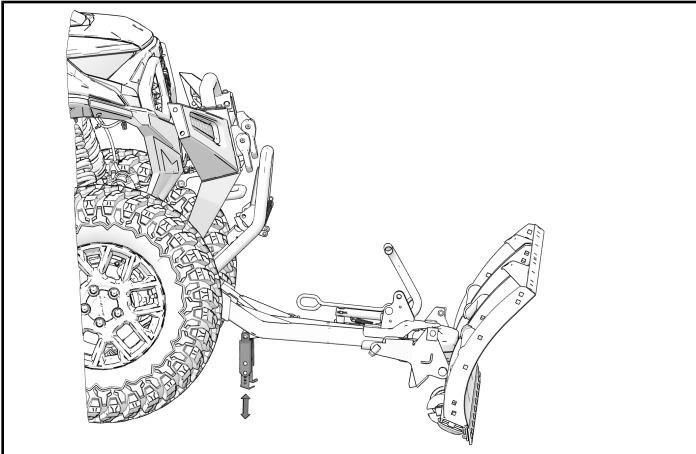
3. Rotate hook assembly handle until locked into position



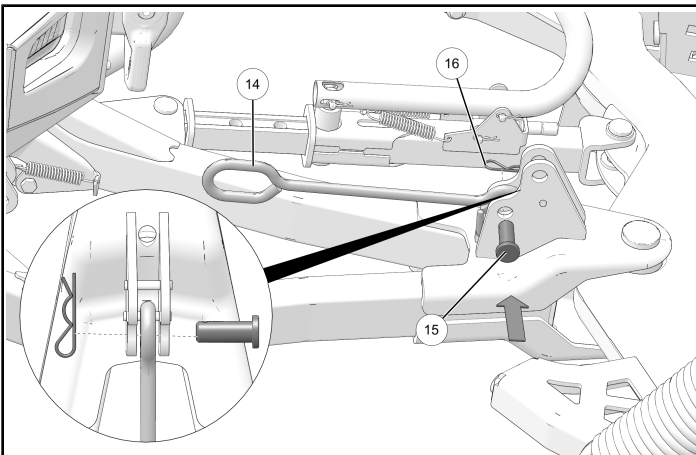
TIP

If hooks are not locking into place check to make both connection points are fully seated and clear of debris.

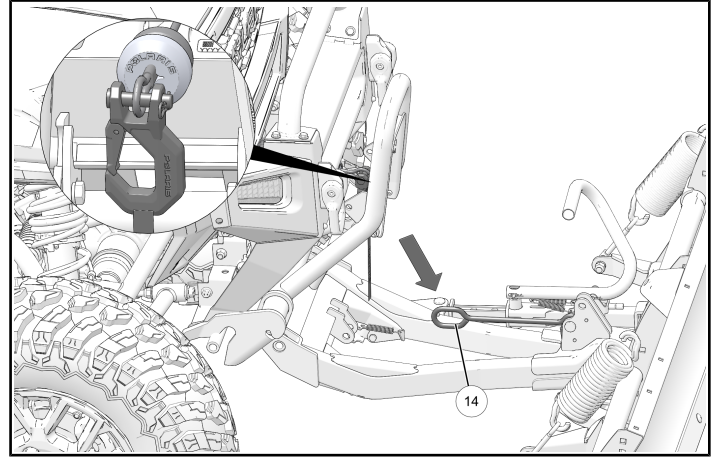
4. Make sure kick stand sits 1–2 inches above the ground.



5. Attach winch link ⑭ to pushframe and fix into place with cotter pin 3 ⑮ and R pin ⑯.



6. Connect winch hook on vehicle to winch link ⑭ on plow frame.



7. Using winch controls raise plow and frame until the kickstand release lever engages.

REMOVE PLOW AND FRAME FROM VEHICLE

1. Lower the pushframe using the winch until plow blade touches the ground and winch cable is loose. Remove vehicle winch hook from winch link
2. Lower the kickstand until lock engages

NOTICE

Plow kickstand must not touch the ground. If it does adjust kickstand.

3. Pull release hand upwards and rotate handle and release down until hook assembly is no longer locked onto frame.
4. Reverse winch until cable is fully retracted and reverse vehicle away from plow and frame.

MAINTENANCE AND OPERATION

MAINTENANCE

1. Re-torque all bolts and nuts after the first 30 minutes of use.
2. Lower the blade to the down position when the blade and vehicle are not in use.
3. Check plow and frame for debris and damage before and after use.
4. In the event of a collision check all moving components for damage. Replace all damaged components.
5. Polaris recommends that you remove the blade and plow frame from the vehicle before you ride.

OPERATION

1. Read the blade Owner's Manual, vehicle's Owner's Manual, and Safety Decals prior to operation.
2. Always wear appropriate protective clothing as recommended in your vehicle's Owner's Manual.
3. Do not exceed 5 mp/h (8 km/h) with the blade installed.
4. Operate with extreme caution on slopes, grades, and rough terrain.

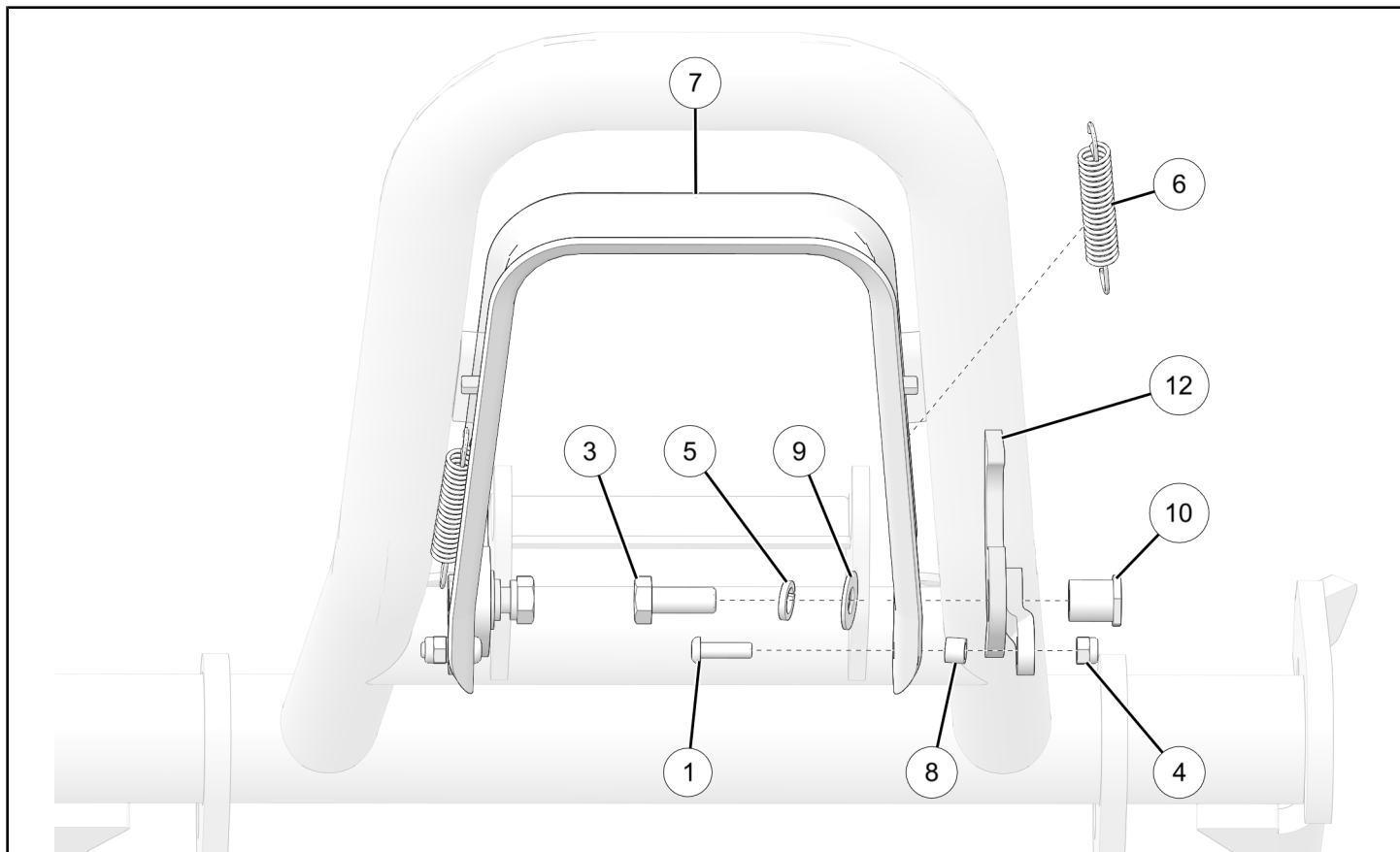
5. Keep bystanders away from the blade and vehicle while in motion.
6. Do not allow riders on the blade or vehicle when plowing.
7. When plowing snow or dirt into a pile, start backing up before raising the blade.
8. Do not ram the blade into a snow pile. Slow down before hitting a pile.
9. Be aware of possible hidden objects under the snow.

BLADE ADJUSTMENT

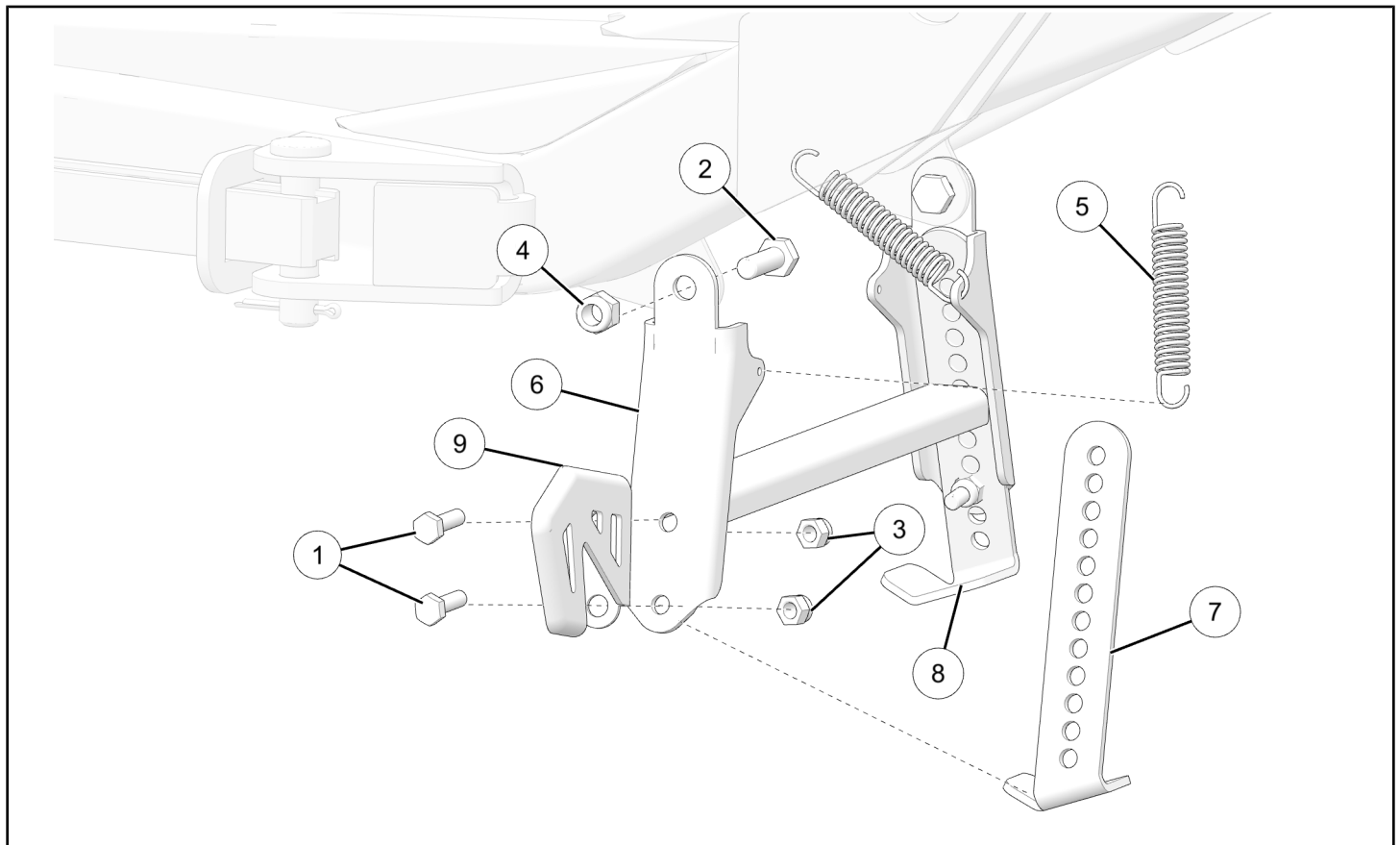
1. Before you adjust the blade angle: stop the engine, set and lock the brakes, and raise the blade with the winch. Do not attempt to raise the blade by hand.
2. Raise the blade clear of the ground.
3. Pull the angle lever forward and lock into place at desired angle.
4. Adjust blade stops on both sides of the push assembly equally to achieve desired position.

SERVICE KIT CONTENTS

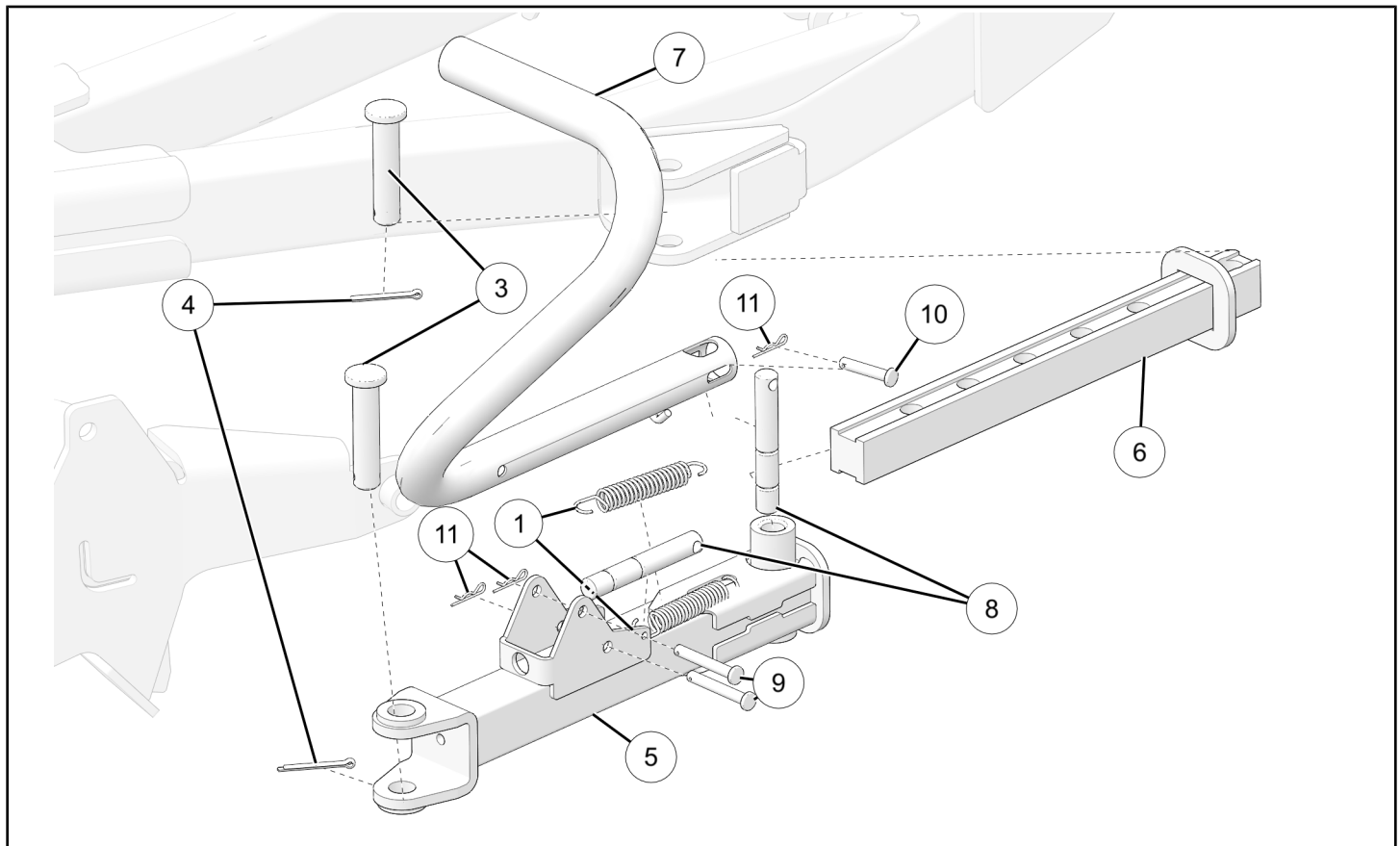
P/N 2209950



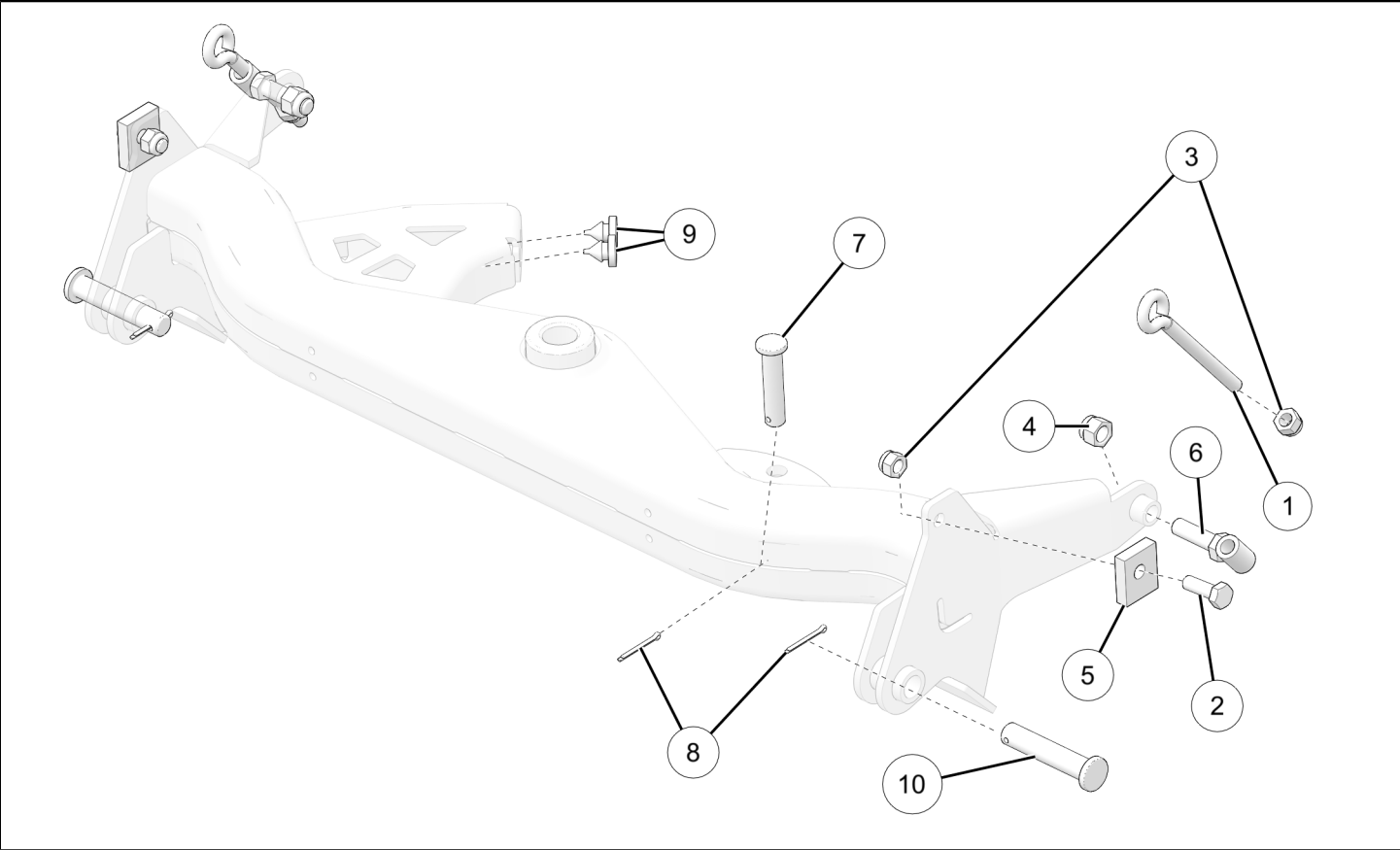
Ref	Qty	Part Description
1	2	Screw, Button Head, Allen M6 1 X 20 mm
2	2	Washer, Fender M6
3	2	Bolt, Hex Head M10 1.5 x 25 mm
4	2	Nut, Nylon M6
5	2	Washer, Spring Lock M10
6	2	Tension Spring 13 x 58 mm
7	1	Handle
8	1	Handle Sleeve
9	2	Hook Shim
10	2	Hook Bushing
11	1	Right Hook Assembly
12	1	Left Hook Assembly



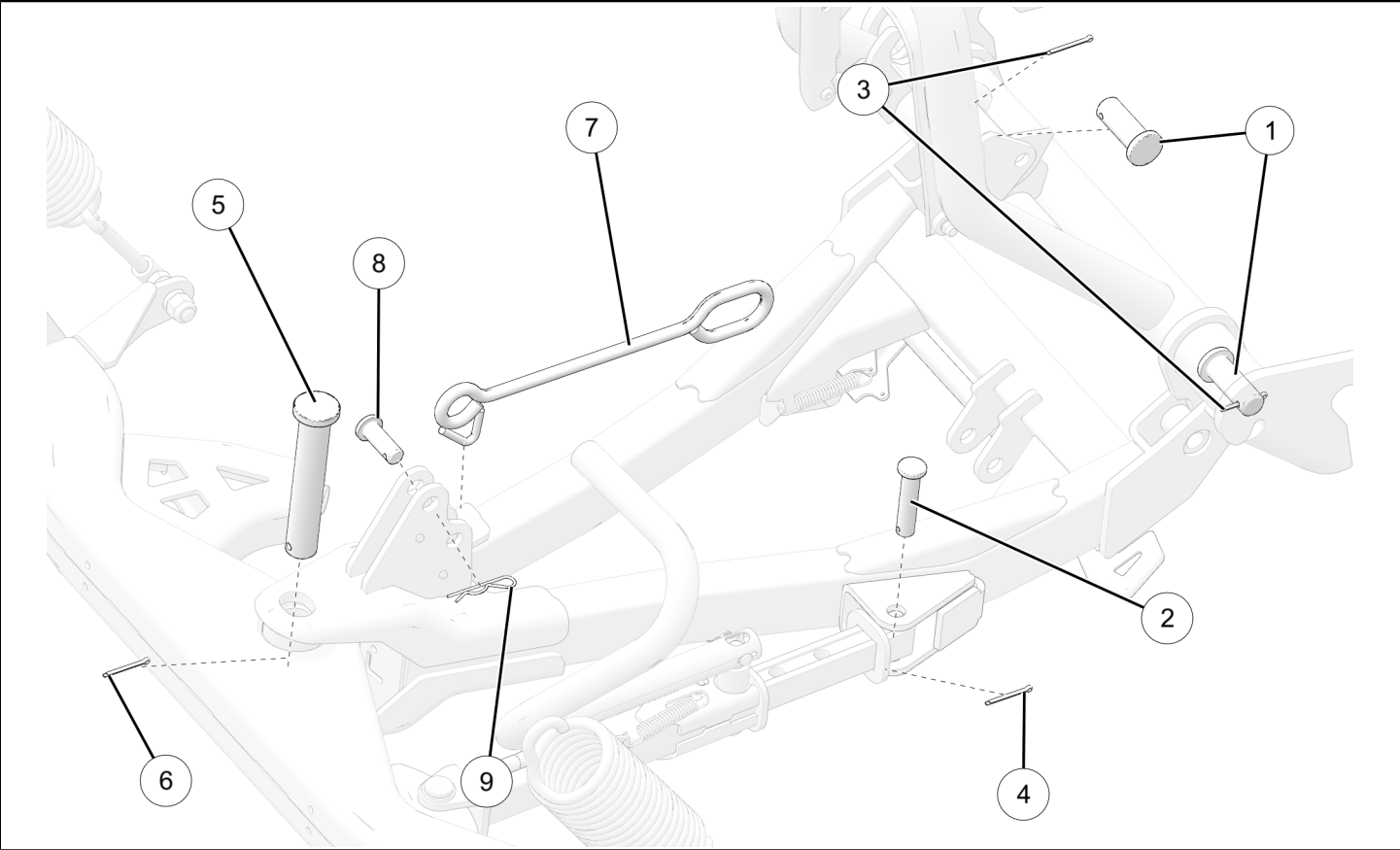
Ref	Qty	Part Description
1	4	Bolt, Hex M6 1 x 20 mm
2	2	Bolt, Hex M8 1.25 x 25 mm
3	4	Nylon Nut, Hex M6
4	2	Nylon Nut, Hex M8
5	2	Tension Spring 13 x 58
6	1	Kick Stand
7	1	Left Kickstand Shoe
8	1	Right Kickstand Shoe
9	1	Pedal, Kickstand
10	2	Sleeve 1



Ref	Qty	Part Description
1	2	Tension Spring
-	1	Rubber Stopper (Not Shown)
3	2	Clevis Pin 2
4	2	Cotter Pin 2
5	1	Angle Arm 1
6	1	Angle Arm 2
7	1	Handle
8	2	Shear Pin 5
9	2	Clevis Pin 5
10	1	Clevis Pin 6
11	3	R Pin
-	1	Red Polyethylene Handle (Not Show)



Ref	Qty	Part Description
1	2	Eye Bolt M10 1.5 x 110 x 15 I.D. Eye mm
2	2	Hex Bolt M10 1.5 x 30 Full Thread mm
3	4	Hex Nut, Nylon M10 1.5 mm
4	2	Hex Nut, Nylon M12 1.75 mm
5	2	Blade Stopper
6	2	Eyebolt Holder
7	1	Clevis Pin 2
8	3	Cotter Pin 2
9	2	Rubber Bumper 1
10	2	Clevis Pin 4



Ref	Qty	Part Description	Service Kit
1	2	Clevis Pin 1	2209952
2	1	Clevis Pin 2	2209952
3	2	Cotter Pin 1	2209952
4	1	Cotter Pin 2	2209952
5	1	Main Pin	2209952
6	1	Cotter Pin 3	2209952
7	1	Winch Link Welded Assembly	2209953
8	1	Clevis Pin 3	2209953
9	1	R Pin	2209953