

# WINDSHIELD WIPER KIT



P/N 2889095

## IMPORTANT

Due to the technical nature of this kit, Polaris® insists that this installation be performed by a certified Polaris® technician.

## MISSING OR DAMAGED PARTS

Before beginning assembly, inspect the kit and its component(s) to be sure all parts and tools are accounted for and not damaged. If missing parts or parts are damaged, please contact your Selling Dealer for assistance.

If your accessory was purchased online, please contact POLARIS® customer service at **1-800-POLARIS** (US & Canada only).

## APPLICATION

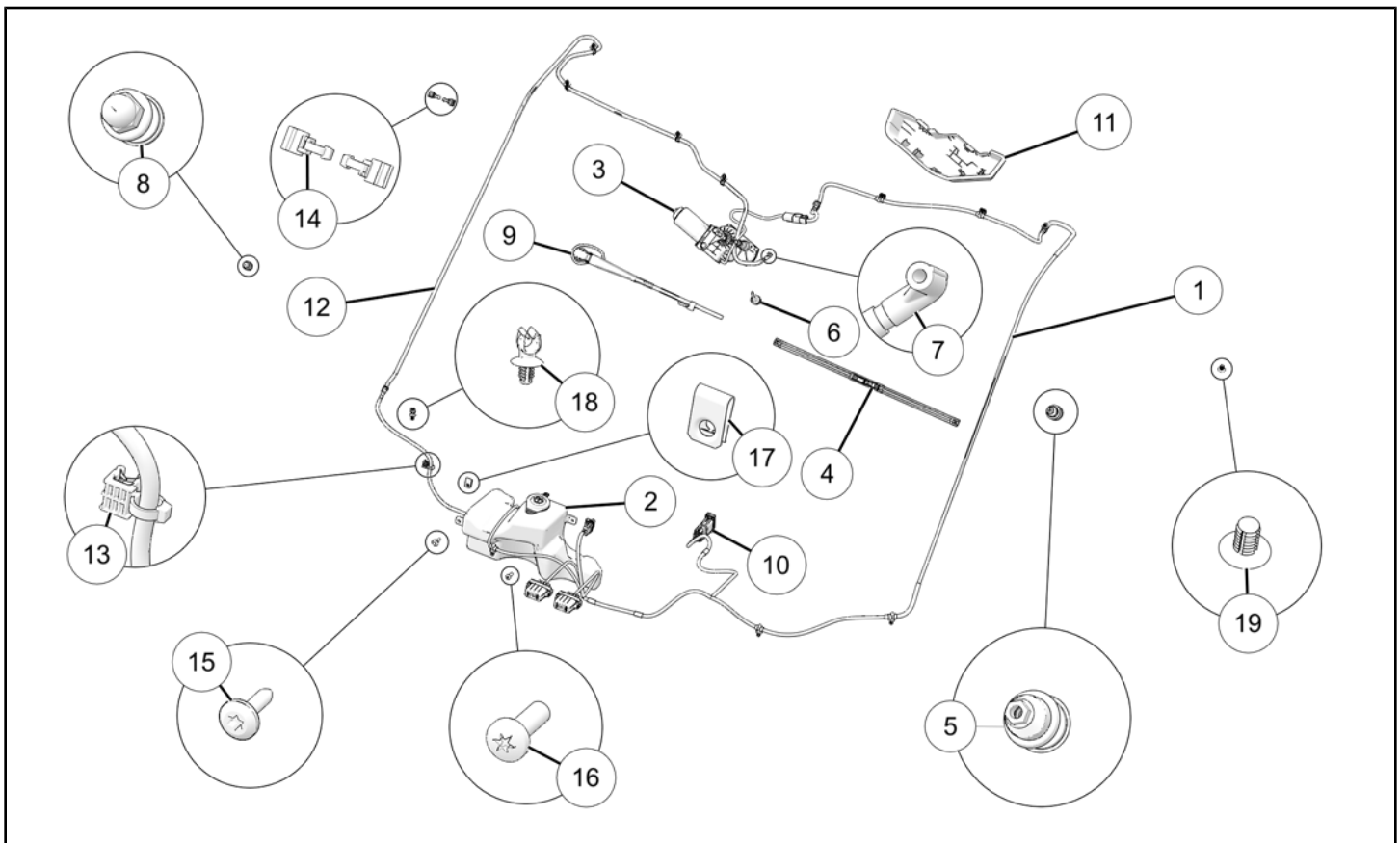
Verify accessory fitment at [www.polaris.com](http://www.polaris.com).

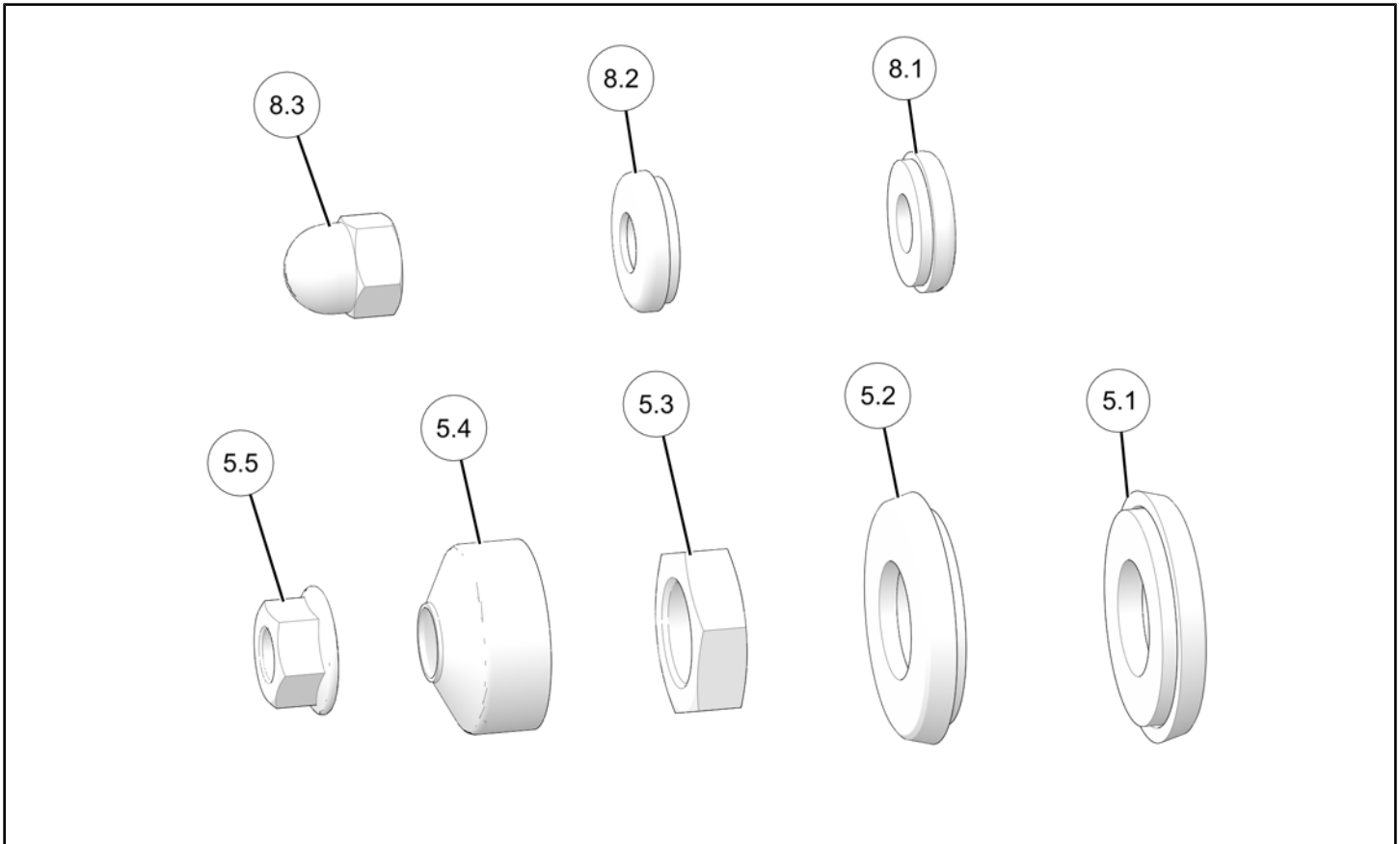
## REQUIRED SOLD SEPARATELY

Only parts for installation of the Windshield Wiper Kit are included. Prior installation of the following additional kit is also required (sold separately):

- *Fixed Windshield Kit, P/N 2889086*

## KIT CONTENTS





| REF | QTY | PART DESCRIPTION                  | P/N AVAILABLE SEPARATELY |
|-----|-----|-----------------------------------|--------------------------|
| 1   | 1   | Harness, Wiper                    | 2416506                  |
| 2   | 1   | Assembly, Reservoir, Washer Fluid | 2638538                  |
| 3   | 1   | Motor, Wiper                      | 2638792                  |
| 4   | 1   | Blade, Wiper                      | 2638793                  |
| 5   | 1   | Kit, Hardware, Motor              | 2638794                  |
| 5.1 | 1   | Washer, Inner                     | n/a                      |
| 5.2 | 1   | Washer, Outer                     | n/a                      |
| 5.3 | 1   | Nut, Hex-Flange                   | n/a                      |
| 5.4 | 1   | Cap                               | n/a                      |
| 5.5 | 1   | Nut, Hex-Flange                   | n/a                      |
| 6   | 1   | Connector, Elbow                  | 2638896                  |
| 7   | 1   | 90° Connector, Elbow              | 2638897                  |
| 8   | 1   | Kit, Hardware, Wiper              | 2638920                  |
| 8.1 | 1   | Washer, Inner                     | n/a                      |
| 8.2 | 1   | Washer, Outer                     | n/a                      |
| 8.3 | 1   | Cap, Dome                         | n/a                      |
| 9   | 1   | Arm, Wiper                        | 2639723                  |

| REF | QTY | PART DESCRIPTION                                 | P/N AVAILABLE SEPARATELY |
|-----|-----|--|--------------------------|
| 10  | 1   | Switch, Wiper                                    | 4080801-10               |
| 11  | 1   | Cover, Wiper                                     | 5459148                  |
| 12  | 1   | Hose, Wiper Fluid                                | 5526455                  |
| 13  | 1   | Edge Clip, 3-6 mm                                | 7082404                  |
| 14  | 2   | Edge Clip, 1-3 mm                                | 7082427                  |
| 15  | 1   | Screw, Torx® Drive, Truss Head, M6 x 1.0 x 25 mm | 7519650                  |
| 16  | 1   | Screw, Torx® Drive, Pan Head, (#14 x .75)        | 7519731                  |
| 17  | 1   | U-Nut, M6 x 1.0 mm                               | 7547674                  |
| 18  | 5   | Clip, Fir-Tree                                   | 7662429                  |
| 19  | 9   | Dart, Push                                       | 7670088                  |

## TOOLS REQUIRED

- Safety Glasses
- Socket Set, Metric
- Socket Set, Torx® Bit
- Torque Wrench
- Fish Tape

## CONSUMABLES REQUIRED

- Windshield Washer Fluid

## IMPORTANT

Your Windshield Wiper Kit is exclusively designed for your vehicle. Please read the installation instructions thoroughly before beginning. Installation is easier if the vehicle is clean and free of debris. For your safety, and to ensure a satisfactory installation, perform all installation steps correctly in the sequence shown.

## INSTALLATION INSTRUCTIONS

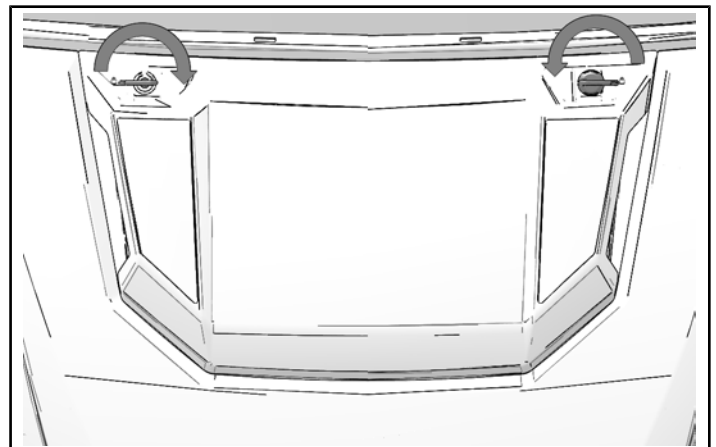
### VEHICLE PREPARATION

#### GENERAL

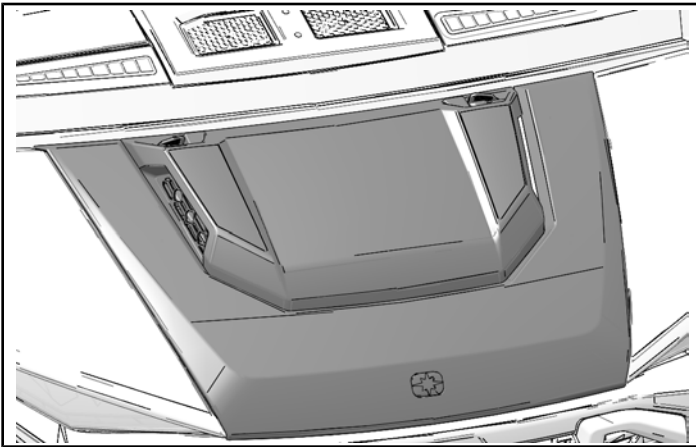
1. Park vehicle on a flat surface.
2. Shift vehicle into PARK.
3. Turn key to OFF position and remove key.

### INNER HOOD REMOVAL

1. Turn knob upwards.



2. Move hood forward to release front hooks and lift to remove.



### **A-PILLAR REMOVAL**

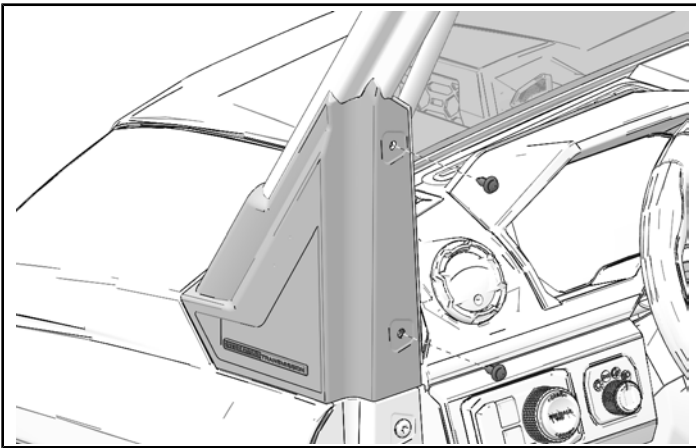
#### **NOTICE**

Door hidden for clarity.

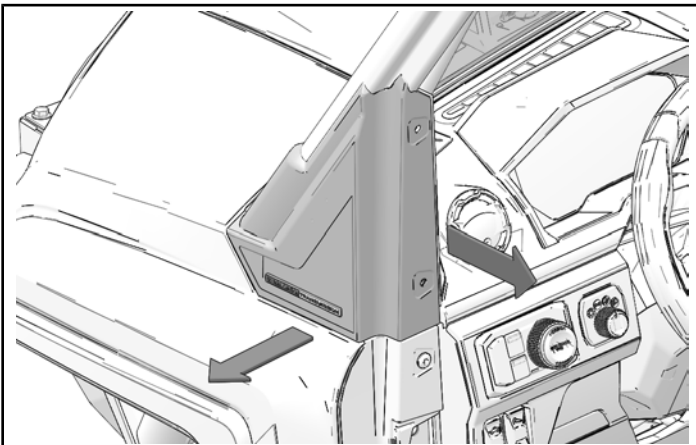
#### **NOTICE**

Left side shown; right side similar.

1. Remove two push-pin rivets from a-pillar panel.

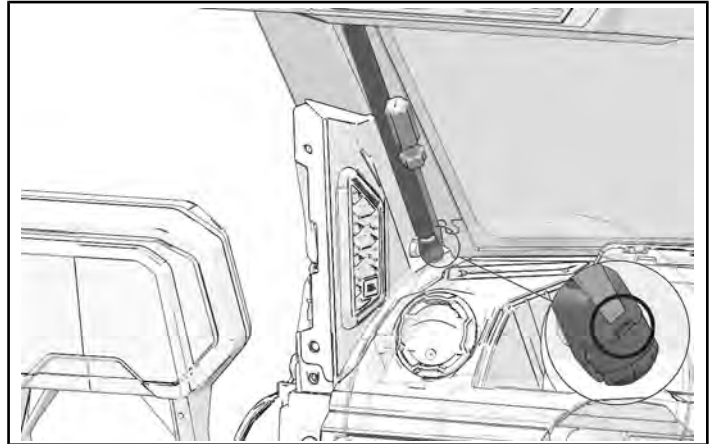


2. Remove a-pillar panel outward and forward.

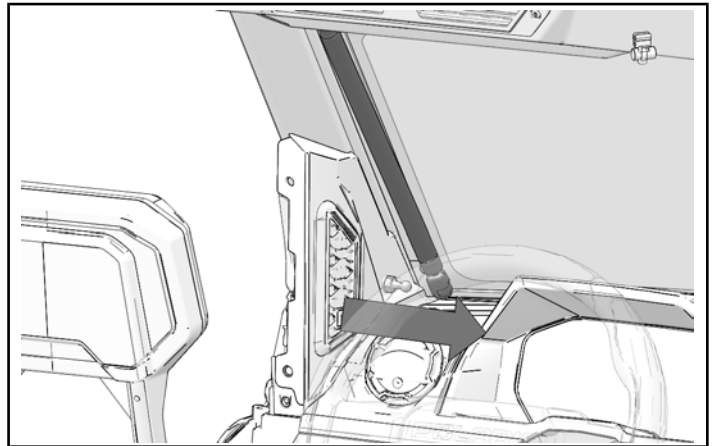


### **IF EQUIPPED WITH TIP OUT WINDSHIELD**

1. Push clip out of windshield shock end using a screw driver.

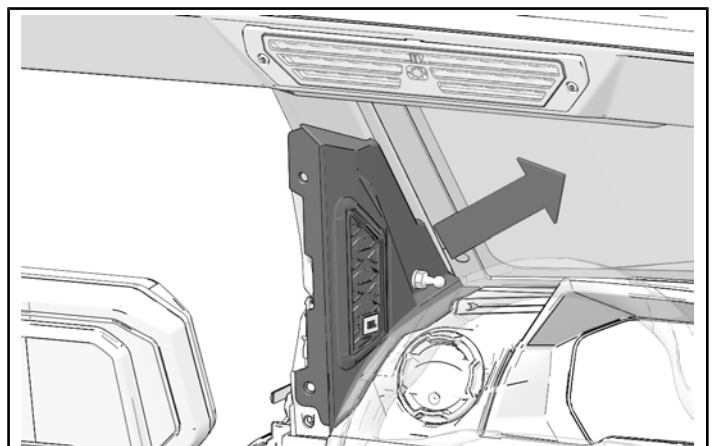


2. Remove windshield shock end from ball end.



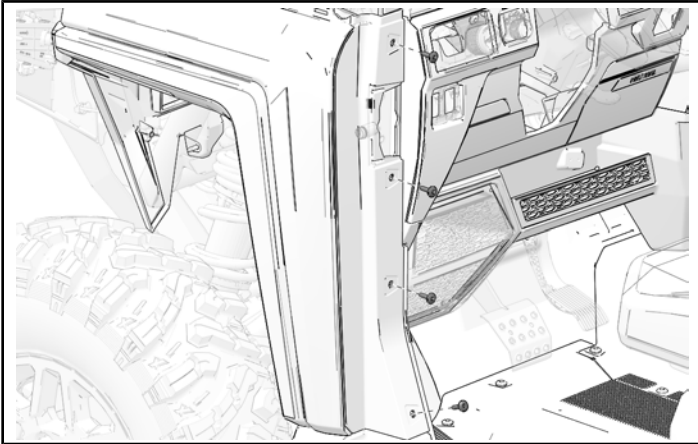
### **A-PILLAR INNER PANEL REMOVAL**

1. Remove inner a-pillar panel outward.

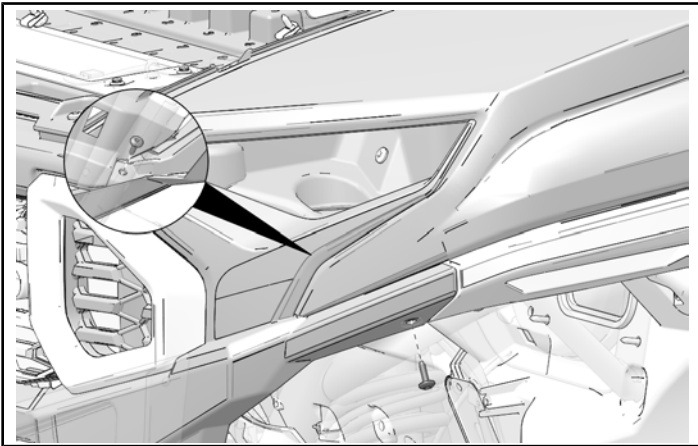


## LEFT FRONT FENDER REMOVAL

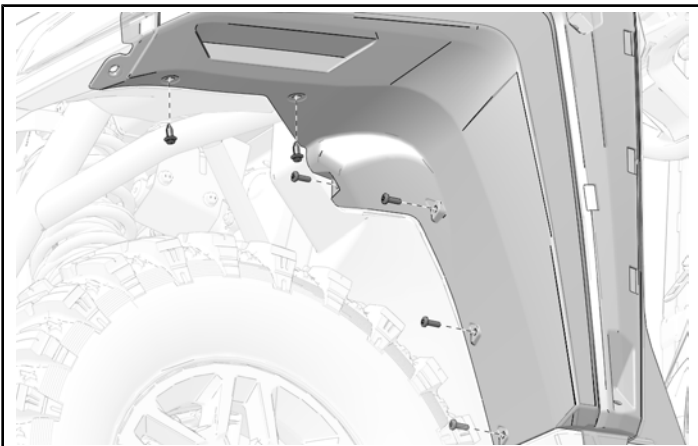
1. Remove and keep four screws from driver side behind left front fender.



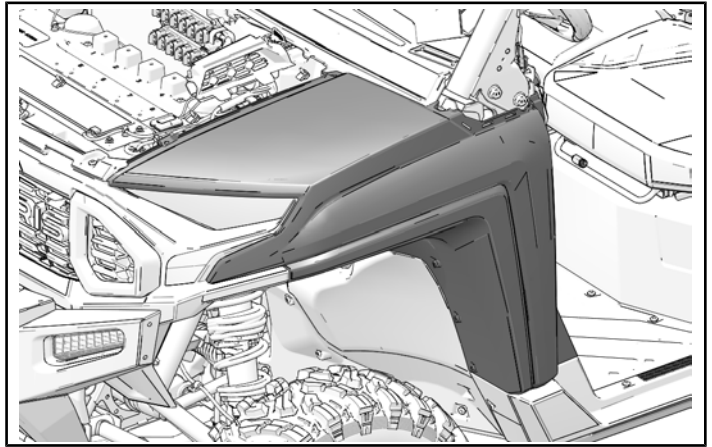
2. Remove and keep two screws near and underneath front left fender.



3. Remove two push pin rivets and four screws from under the fender.

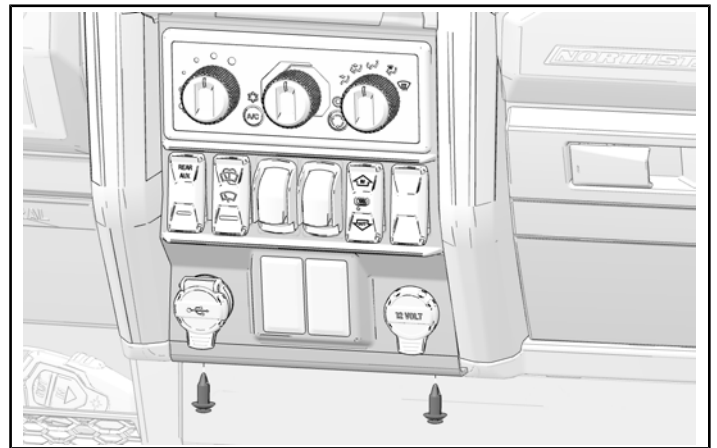


4. Remove from left fender from vehicle.



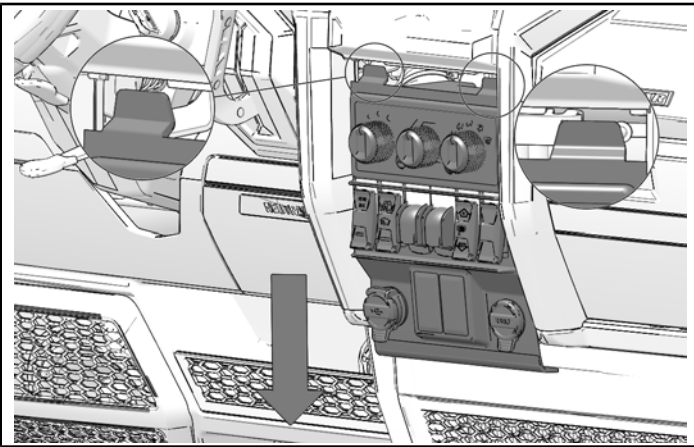
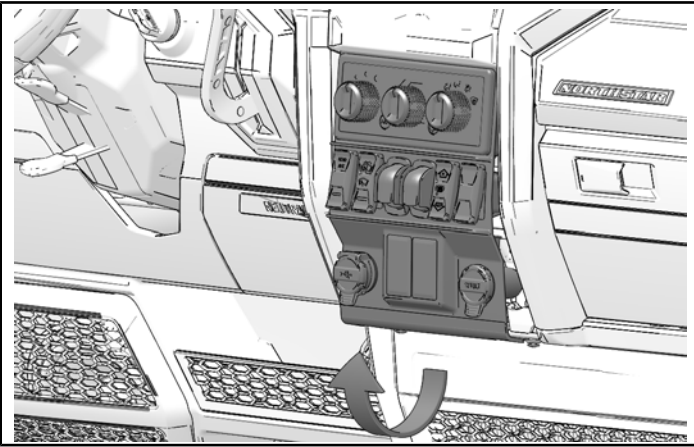
## CENTER DASH HVAC CONTROL PANEL TRIM REMOVAL

1. Remove two push-pin rivets from lower edge of trim panel.

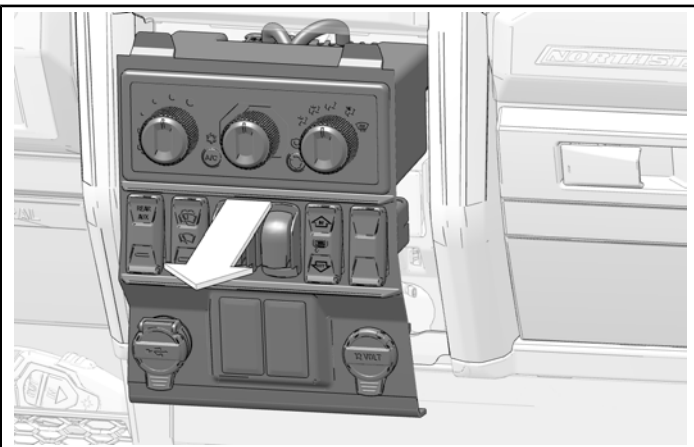




2. Rotate control panel trim rearward and down to remove top two tabs from vehicle.

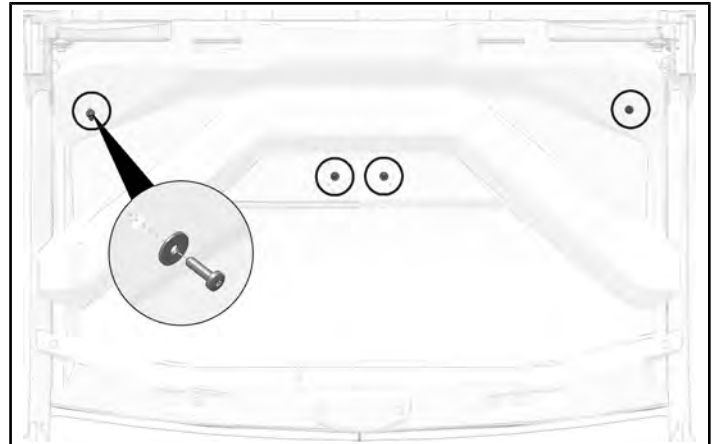


3. Remove center dash HVAC control panel trim and assembly. Disconnect any connections.

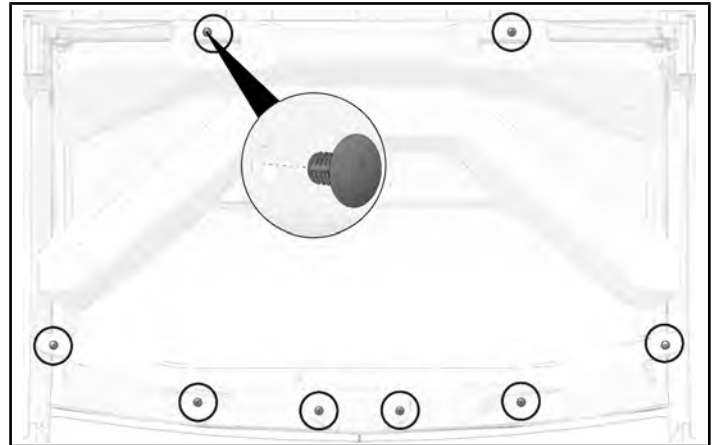


## HEADLINER REMOVAL

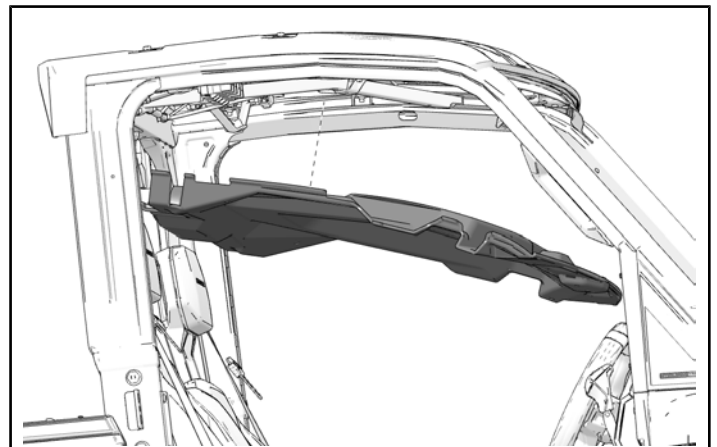
1. Remove and keep four screws and two washers from headliner, disconnect, remove and keep dome light.



2. Remove and discard eight push darts from headliner.



3. Remove headliner from roof and carefully set aside.



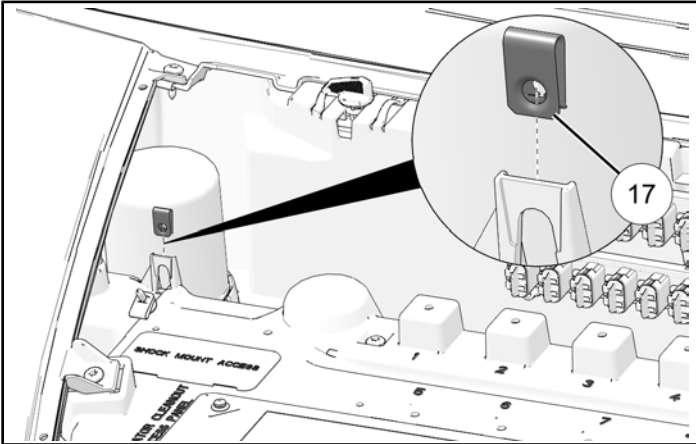
## ACCESSORY INSTALLATION

### NOTICE

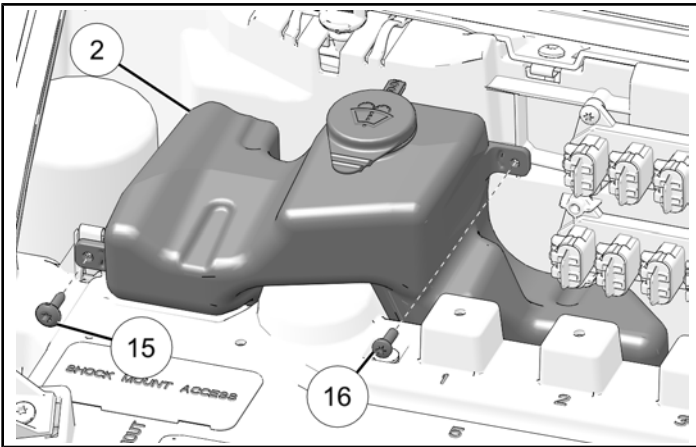
Polaris recommends that two people install Windshield Wiper.

## WIPER FLUID RESERVOIR INSTALLATION

1. Install U-nut ⑰ to mounting location on front passenger side of underhood liner.



2. Place washer fluid reservoir ② in front passenger side of underhood liner and install using screws ⑮, ⑯.



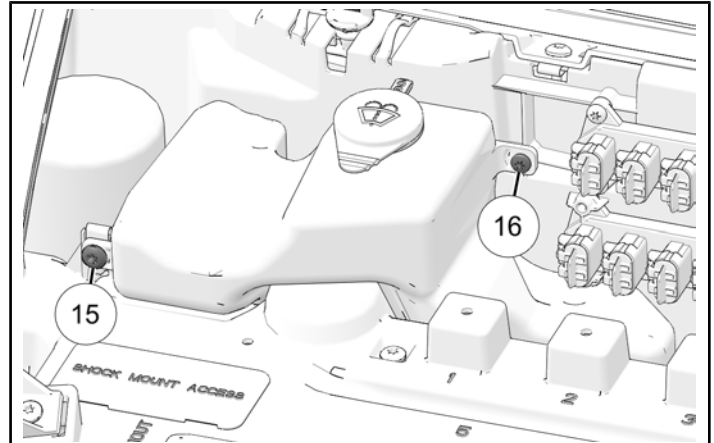
3. Torque screws to specification.

### TORQUE

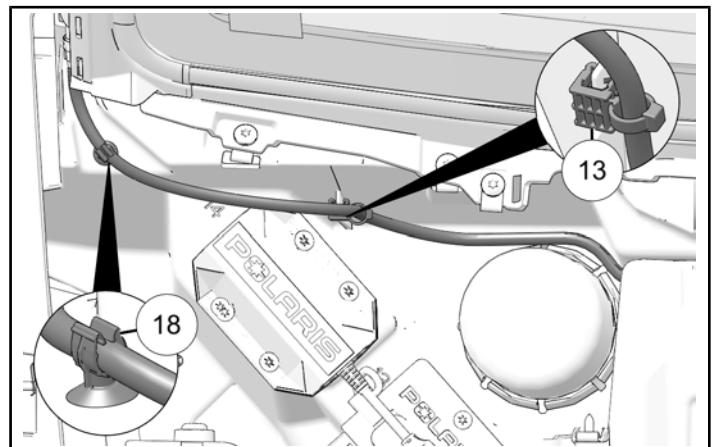
Front Screw ⑮:  
44 in-lbs (5 N·m)

### TORQUE

Rear Screw ⑯:  
22 in-lbs (2.5 N·m)

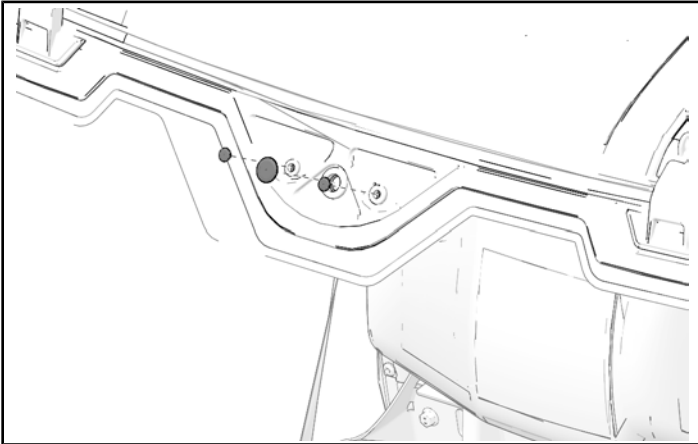


4. Route reservoir hose along underhood liner as shown and install in place using edge clip ⑬ and fir tree clip ⑱.

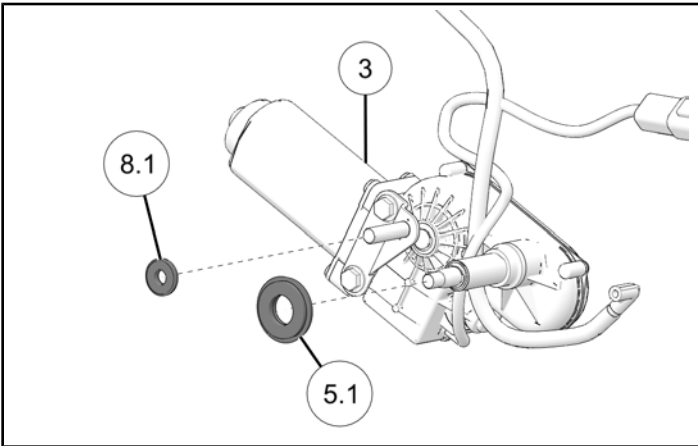


## WIPER MOTOR AND ARM INSTALLATION

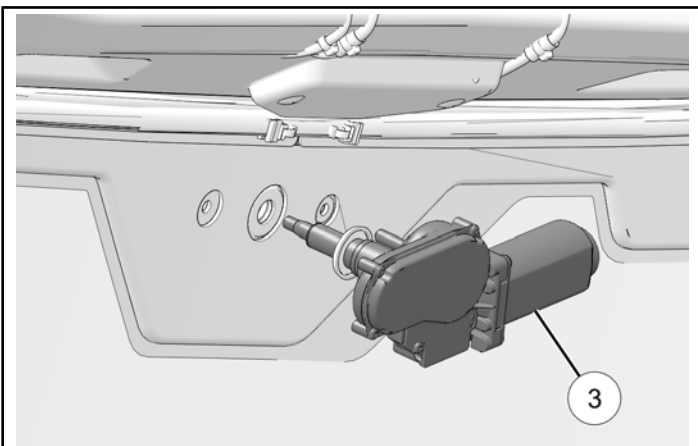
1. Remove three plugs from fixed windshield (P/N 2889086).



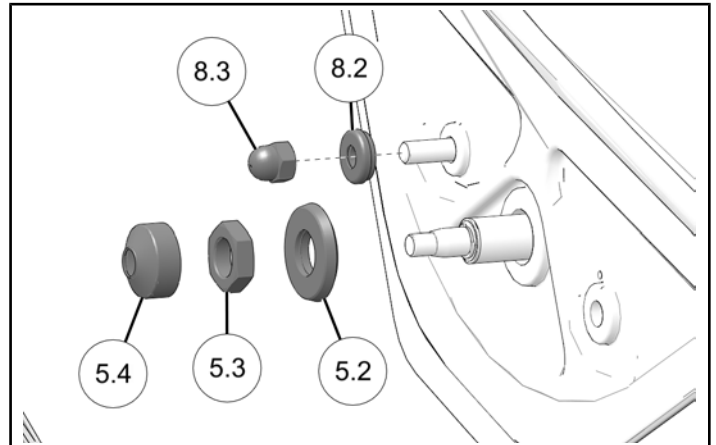
2. Install washers 5.1, 8.1 onto wiper motor ③ as shown.



3. Install wiper motor ③ onto fixed windshield.



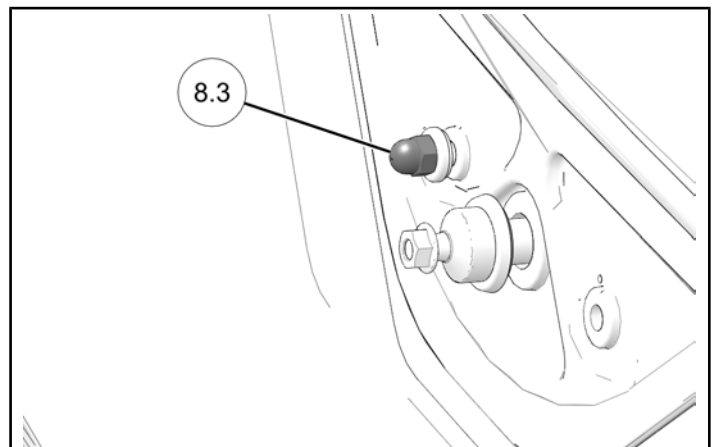
4. Loosely install remaining hardware onto washer motor ③.



5. Torque hardware to specification.

### TORQUE

Domed Cap Nut 8.3:  
66 in-lbs (7.5 N·m)





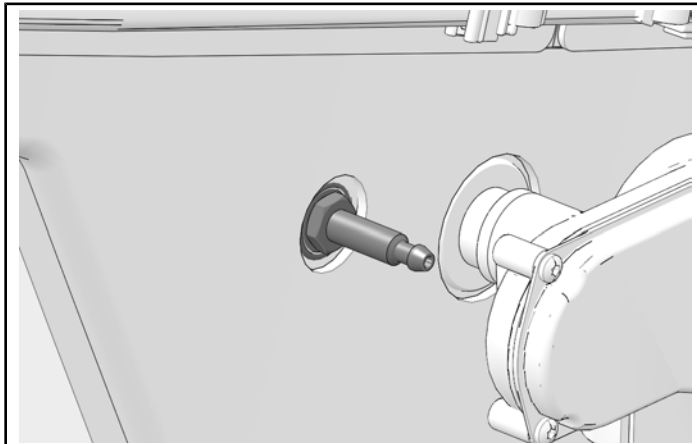
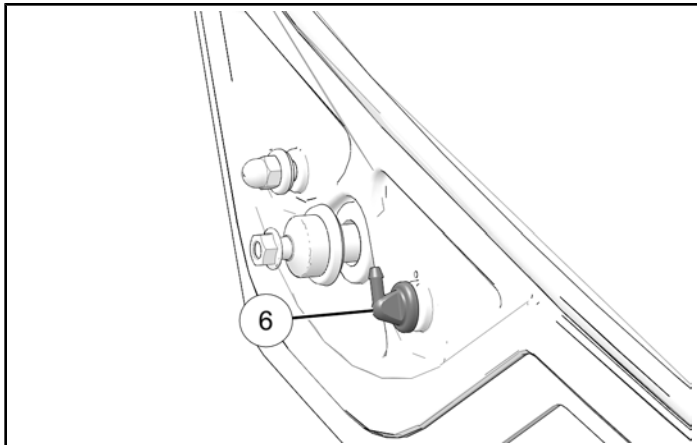
6. Install elbow connector into remaining hole in windshield. Torque to specification.

**NOTICE**

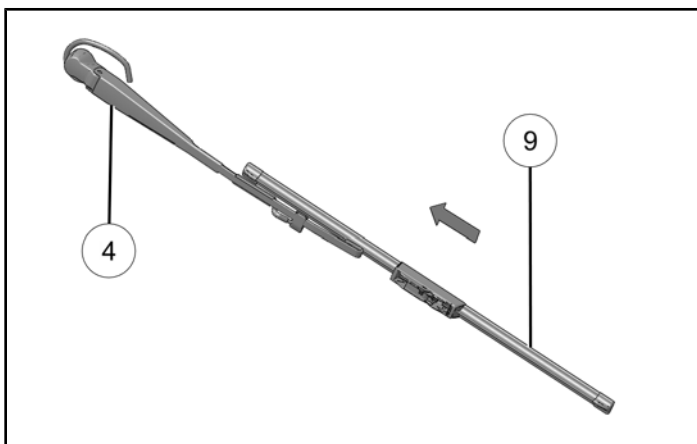
Hold the nozzle at the 11 o'clock position while a second person tightens the nut from the inside.

**TORQUE**

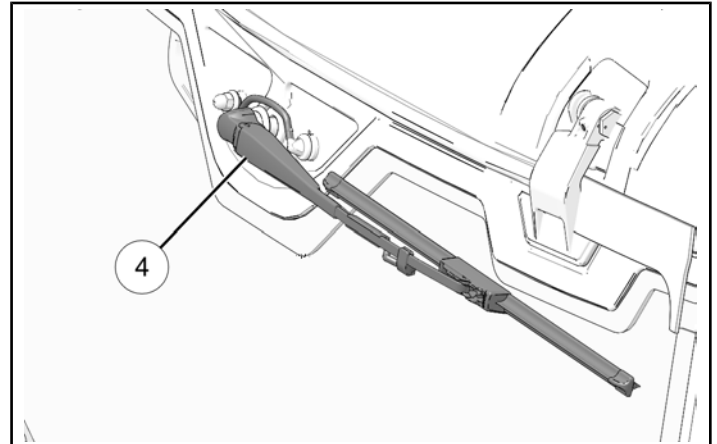
Elbow Connector ⑥:  
**2.6 in-lbs (0.3 N·m)**



7. Install wiper blade ⑨ onto wiper arm ④.



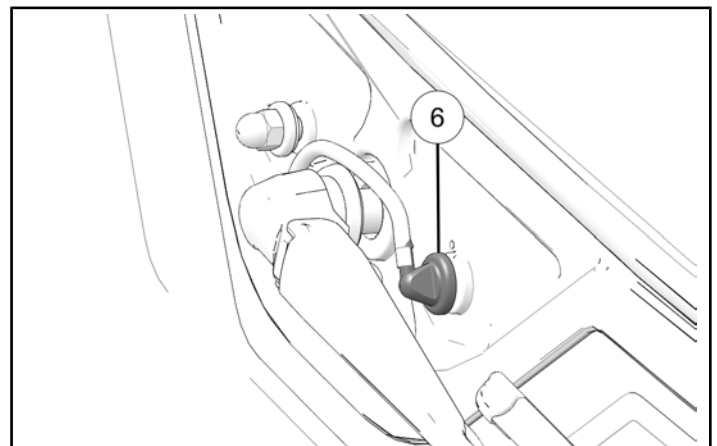
8. Lift wiper arm cap Install wiper arm ④ onto wiper arm shaft in a position where blade will be able to fully clean windshield.



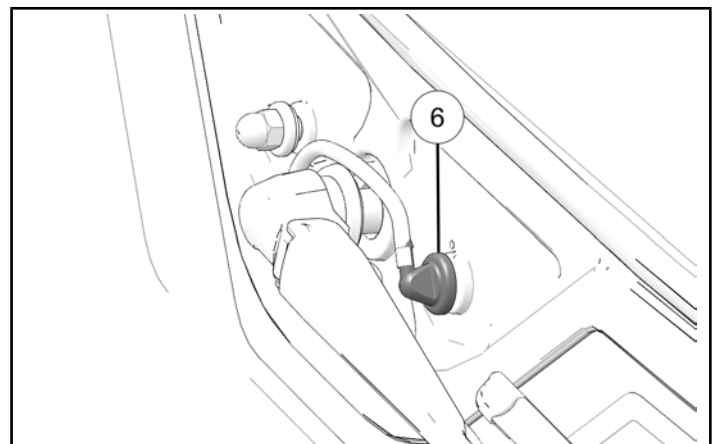
9. Lift wiper arm cap and attach wiper assembly to wiper motor using hex flange nut 5.5. Torque nut to specification

**TORQUE**

Hex Flange Nut 5.5:  
**35 in-lbs (4 N·m)**



10. Connect wiper arm hose with elbow connector ⑥.



## WASHER FLUID HOSE INSTALLATION

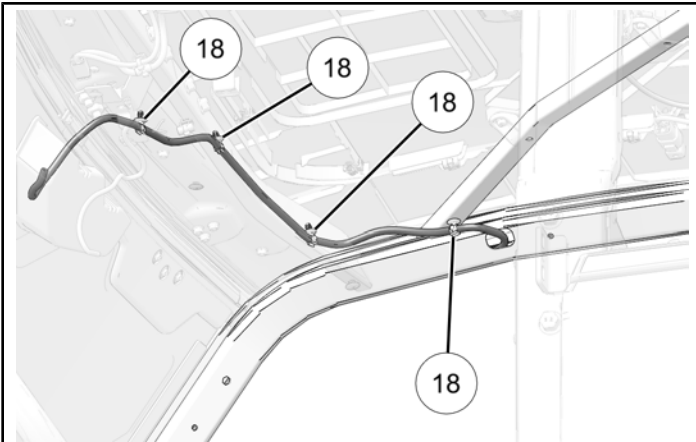
1. Install washer fluid hose ⑫ through the front ROPS tube on passenger side as shown.

### TIP

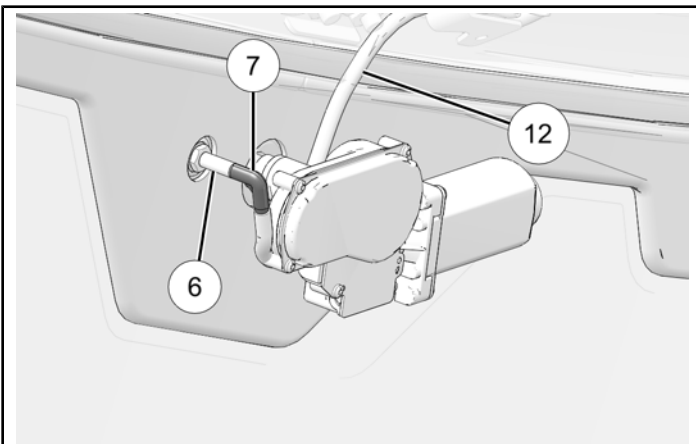
Use of fish tape is recommended for this step.



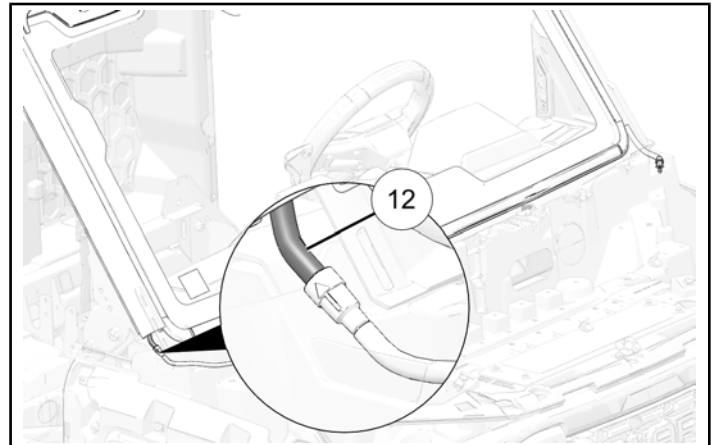
2. Pass washer fluid hose through slot on ROPS tube and install to front visor top bracket using four fir tree clips ⑱.



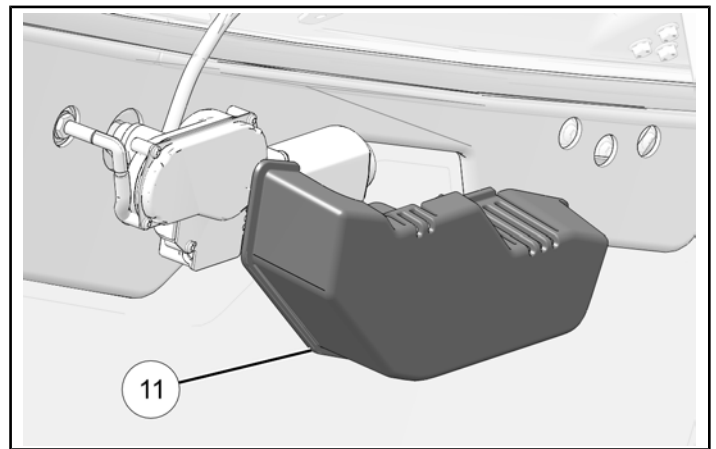
3. Connect washer fluid hose ⑫ to elbow connector ⑥ using 90 degree elbow connector ⑦.



4. Connect washer fluid hose ⑫ to wiper fluid reservoir hose.

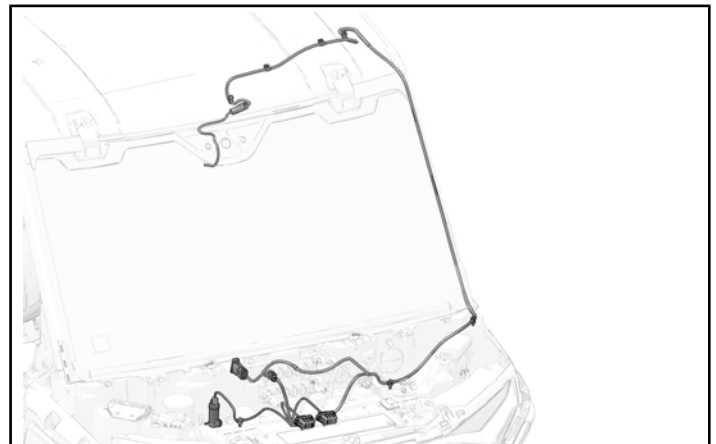


5. Install wiper motor cover ⑪ onto wiper motor. Cover will snap into place when properly installed.



## WIPER HARNESS INSTALLATION

### WIRING HARNESS OVERVIEW

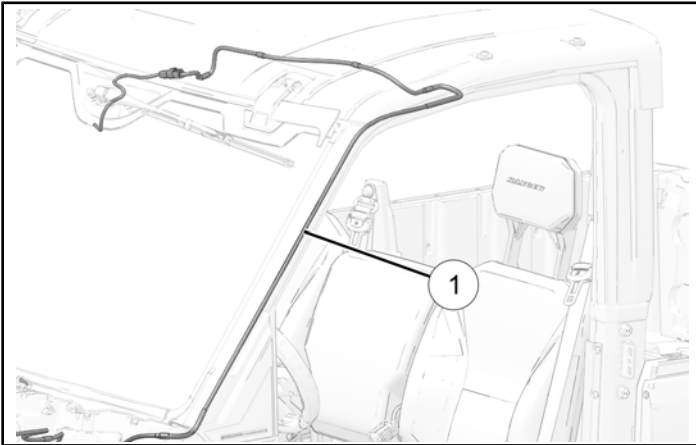


## WIRING HARNESS INSTALLATION

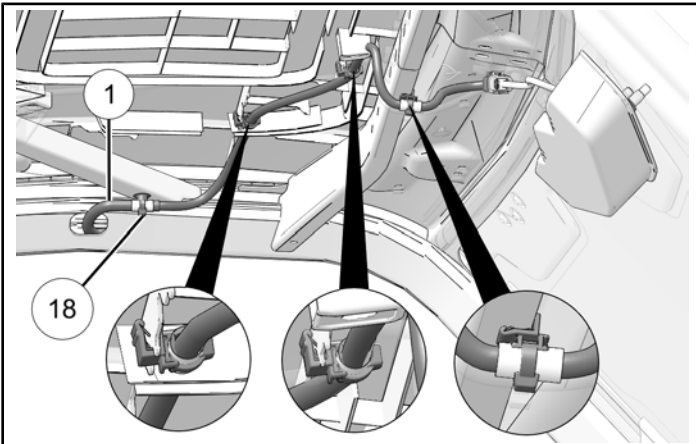
1. Route wiper harness ① through the front ROPS tube on driver side as shown.

### TIP

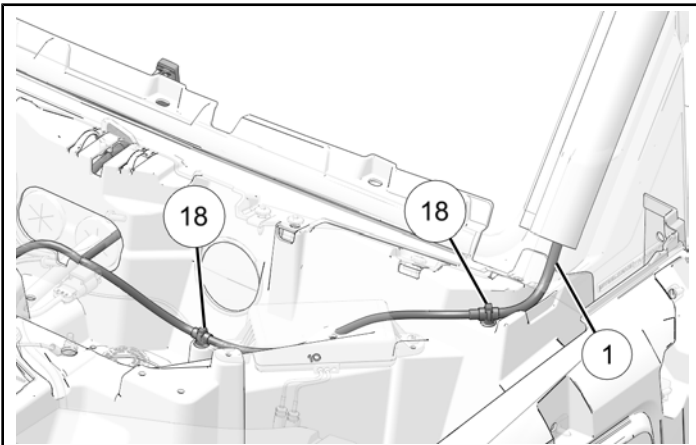
Use of fish tape is recommended for this step.



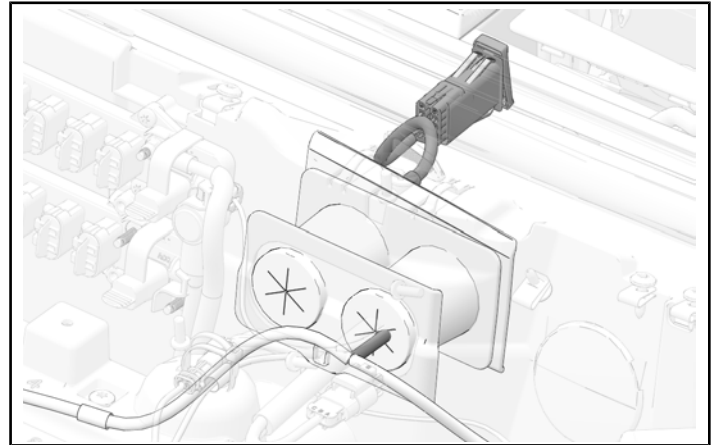
2. Pass harness ① through ROPS slot and connect with motor connector. Install to front visor top bracket using fir tree clip ⑱ and three edge clips.



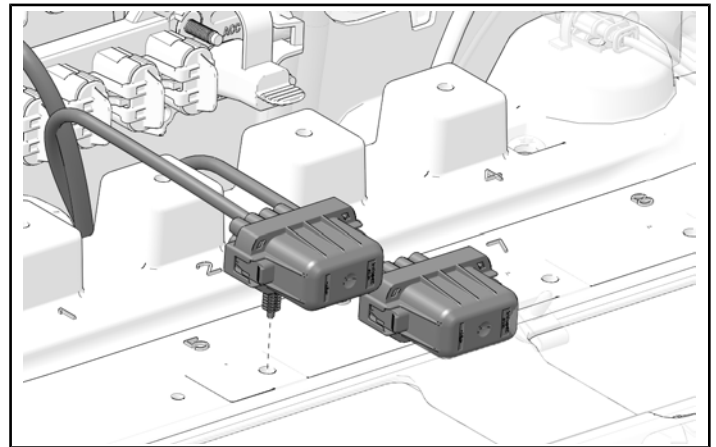
3. Route harness ① toward Polaris Pulse® Bar and attach to underhood dash using two fir tree clips ⑱.



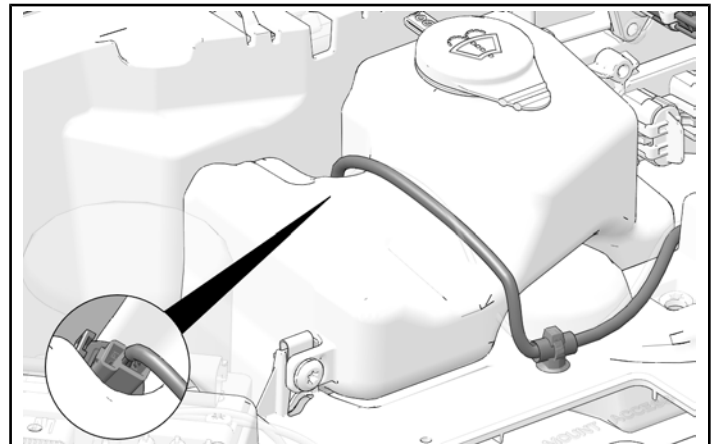
4. Route dashboard switch connector through grommets toward center switch panel as shown.



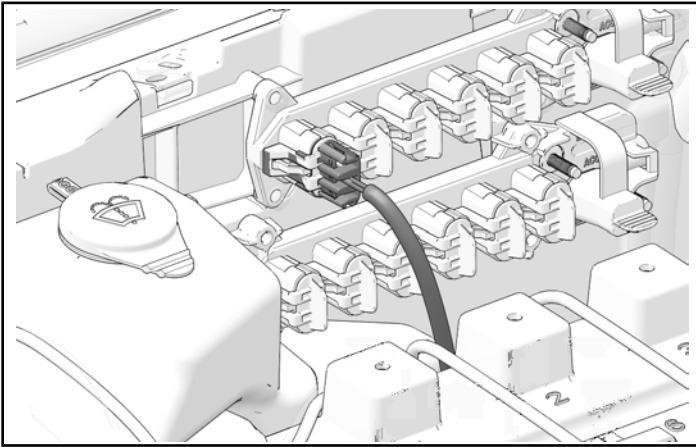
5. Install fuse blocks in positions 5 and 6 on pulse board.



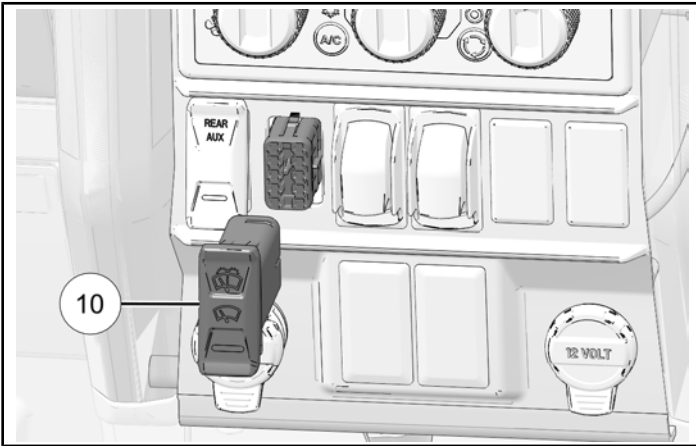
6. Install fir tree clip to underhood dash and connect harness to reservoir connection as shown.



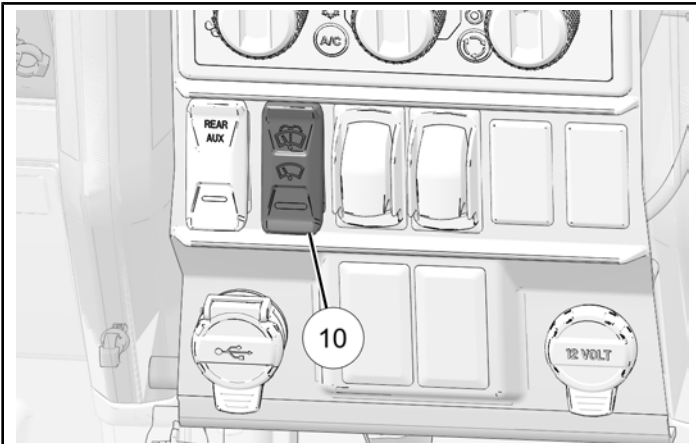
7. Connect harness to Polaris Pulse® bar.



8. Pull dashboard switch connector through blank switch in dashboard and connect with dashboard switch ⑩.

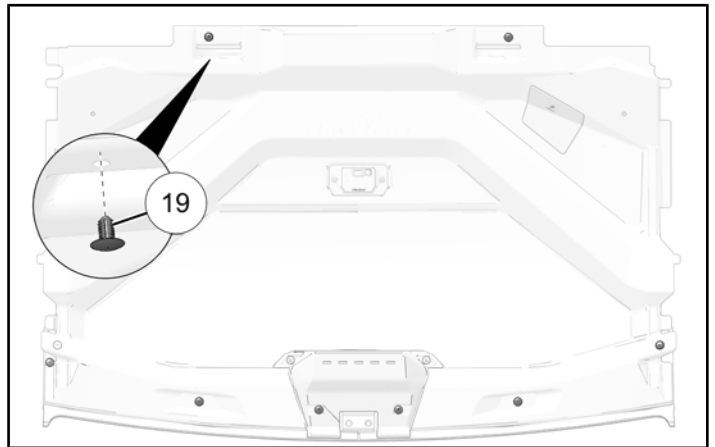
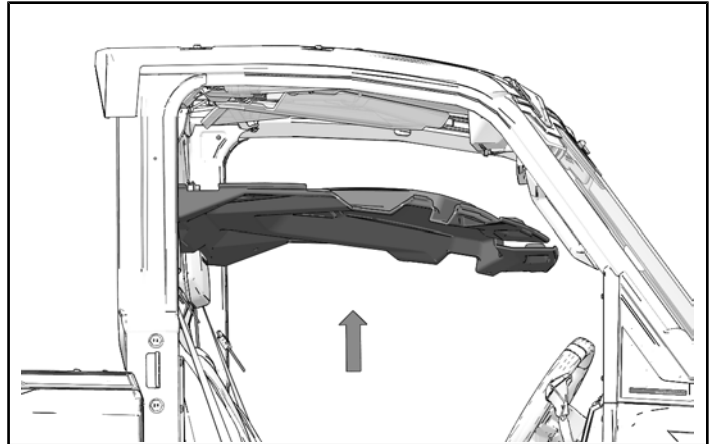


9. Push dashboard switch ⑩ into dashboard until click is heard.

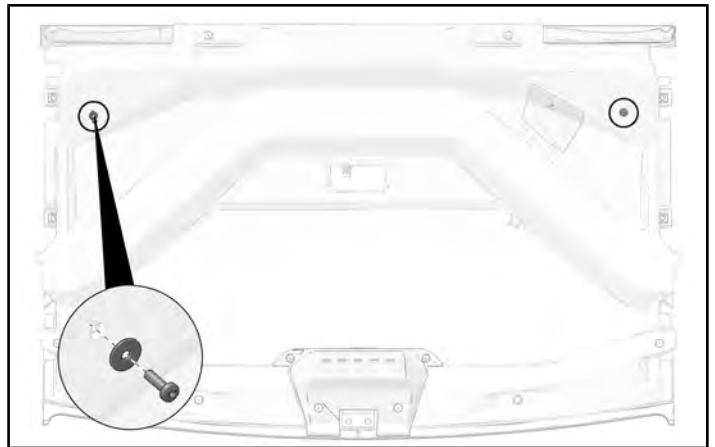


## HEADLINER INSTALLATION

1. Install headliner to roof using eight new push darts ⑲.

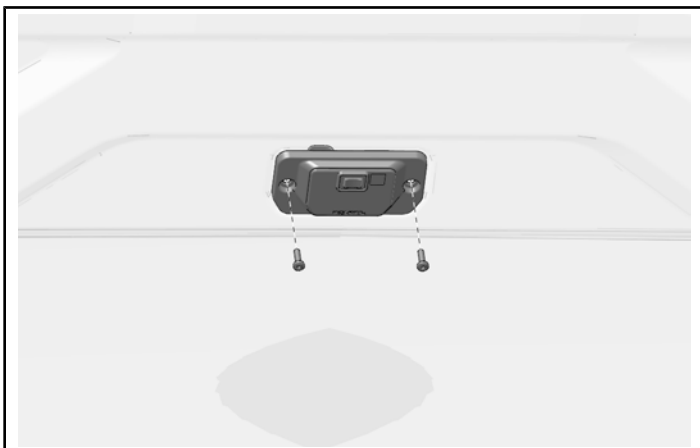


2. Loosely install two kept screws and washers to rear corner of headliner.





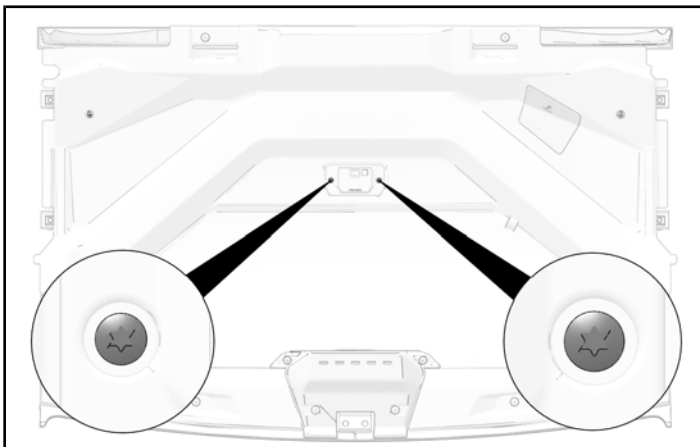
3. Connect dome light and loosely install using two kept screws.



4. Torque two dome light screws to specification.

#### TORQUE

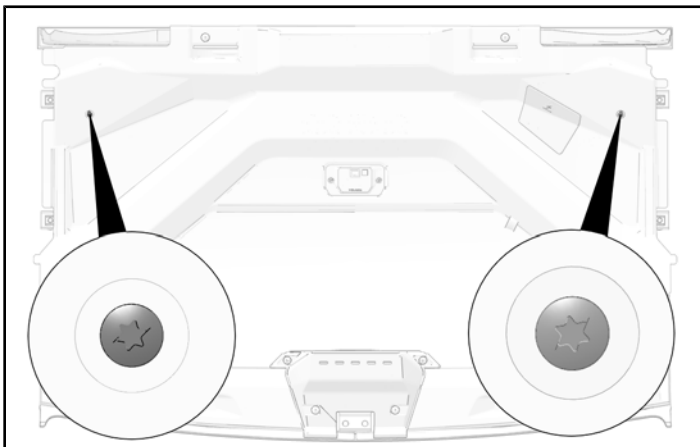
Dome Light Screws:  
**8.8 in-lbs (1 N·m)**



5. Torque two rear corner screws to specification.

#### TORQUE

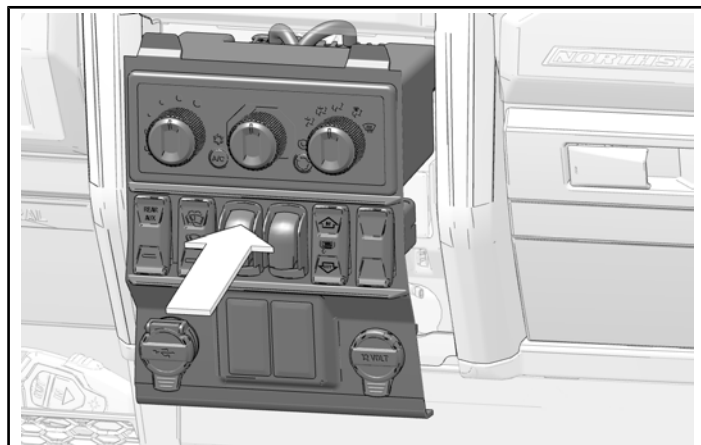
Rear Corner Screws:  
**22 in-lbs (2.5 N·m)**



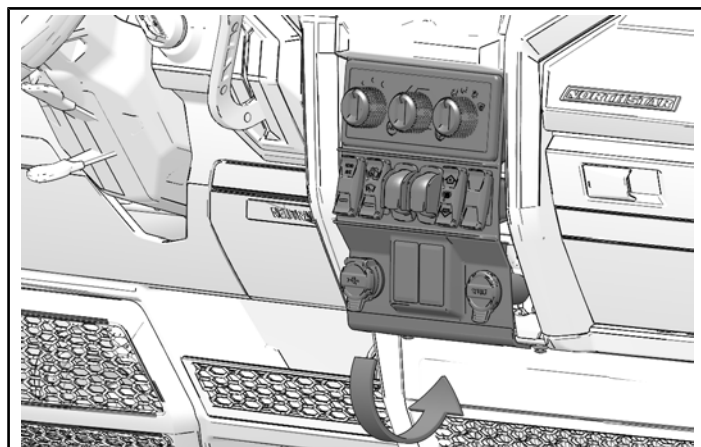
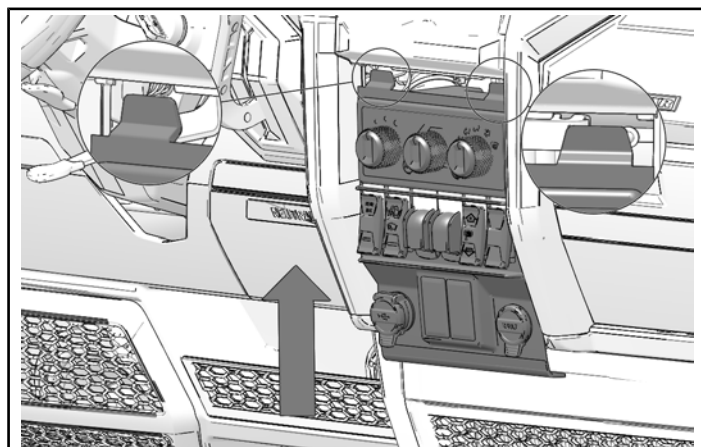
## VEHICLE REASSEMBLY

### CENTER DASH HVAC CONTROL PANEL TRIM INSTALLATION

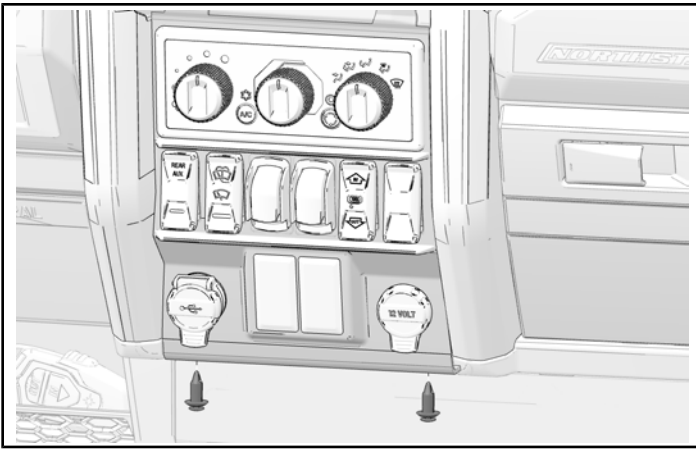
1. Connect any wire connectors and install center dash HVAC control panel trim assembly.



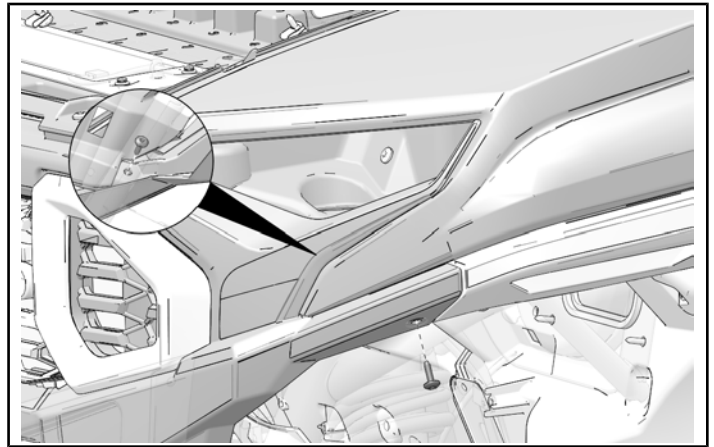
2. Move control panel trim up and forward to install two top tabs.



3. Attach with two push-pin rivets.

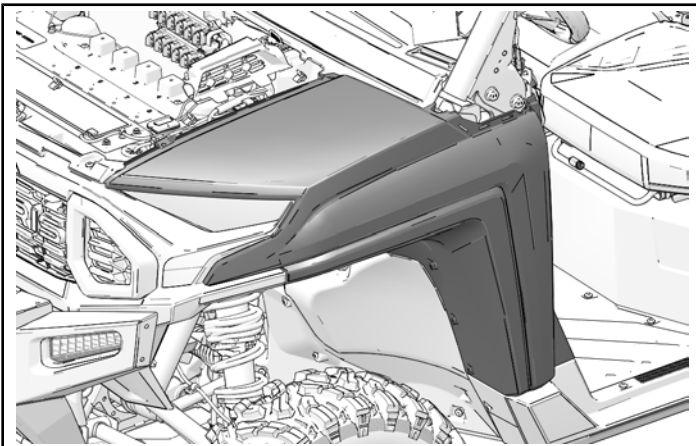


2. Install two kept screws underneath front of left fender.

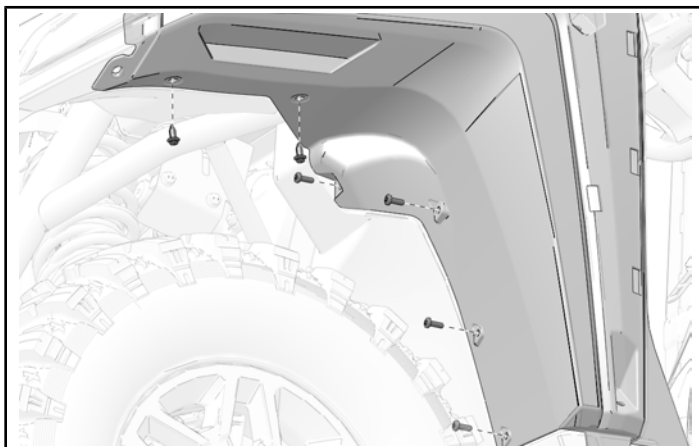
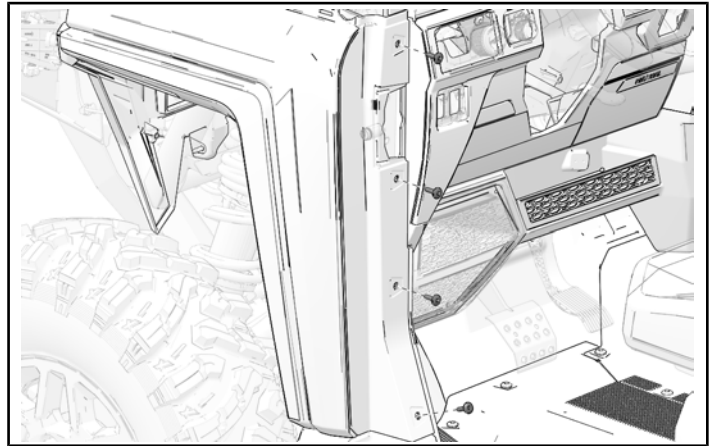


### LEFT FRONT FENDER INSTALLATION

1. Install left fender to vehicle using two push pin rivets and four screws from under the fender.



3. Install four kept screws in driver side behind left front fender.



### A-PILLAR INSTALLATION

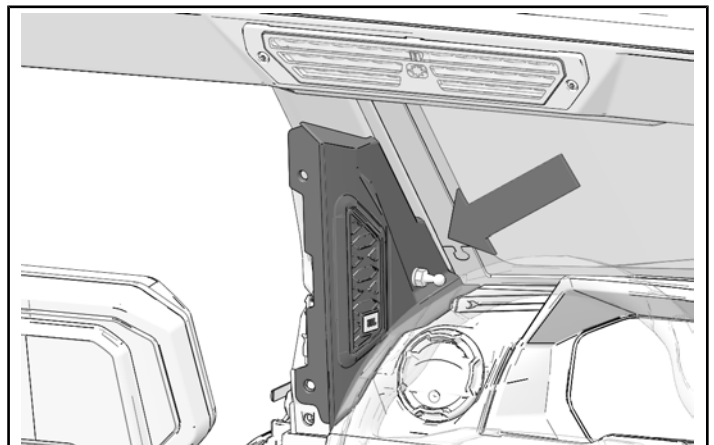
#### NOTICE

Door hidden for clarity.

#### NOTICE

Left side shown; right side similar.

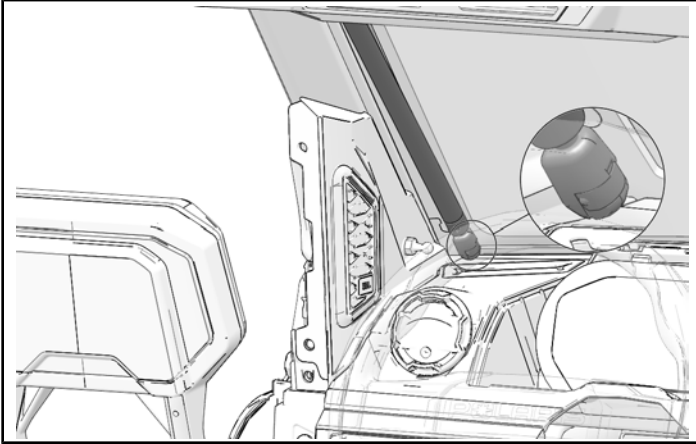
1. Install inner a-pillar panel onto pillar.



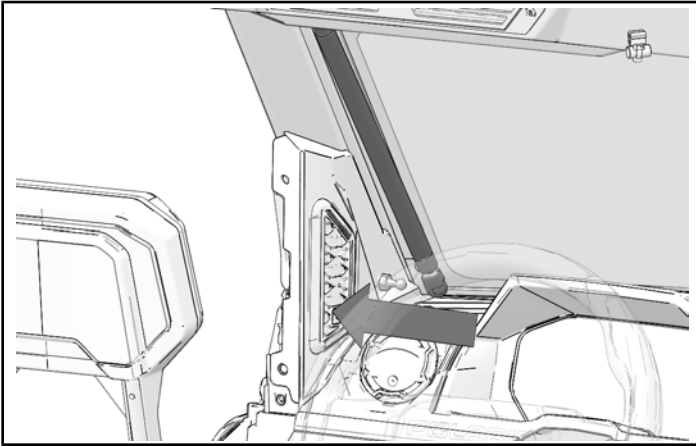


### IF EQUIPPED WITH TIP OUT WINDSHIELD

1. Move clip onto windshield shock end until it is seated inside.

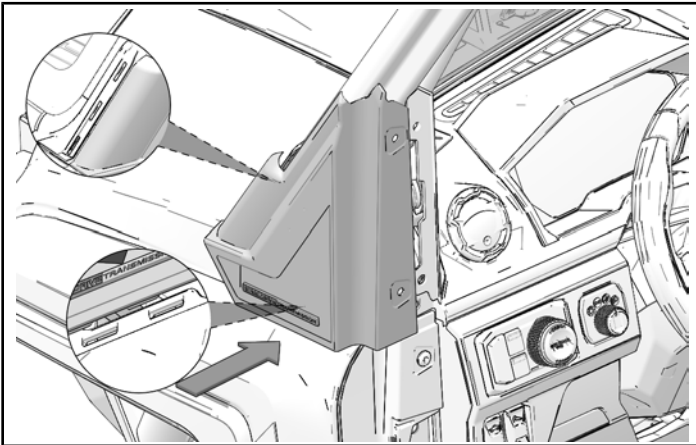


2. Install shock end onto ball end.

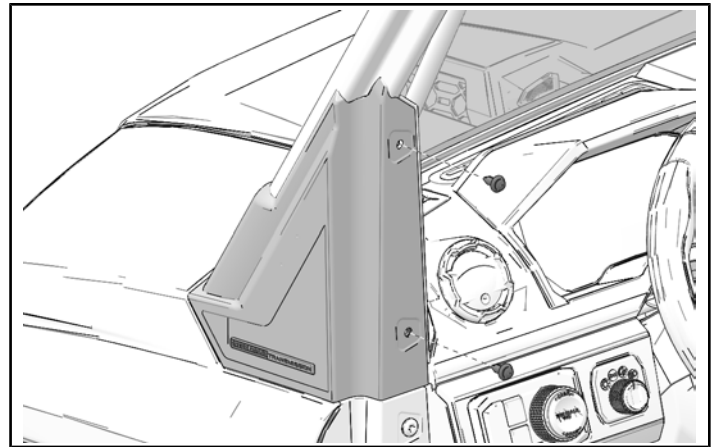


### A-PILLAR OUTER PANEL INSTALLATION

1. Put a-pillar panel onto pillar. Make sure the tabs go into the front and bottom slots.



2. Install two push-pin rivets into a-pillar panel.



### **INNER HOOD INSTALLATION**

1. Install inner hood onto front of vehicle. Turn knob outwards until it points towards the lock symbol.

