

CHAINSAW MOUNT KIT



P/N 2889105

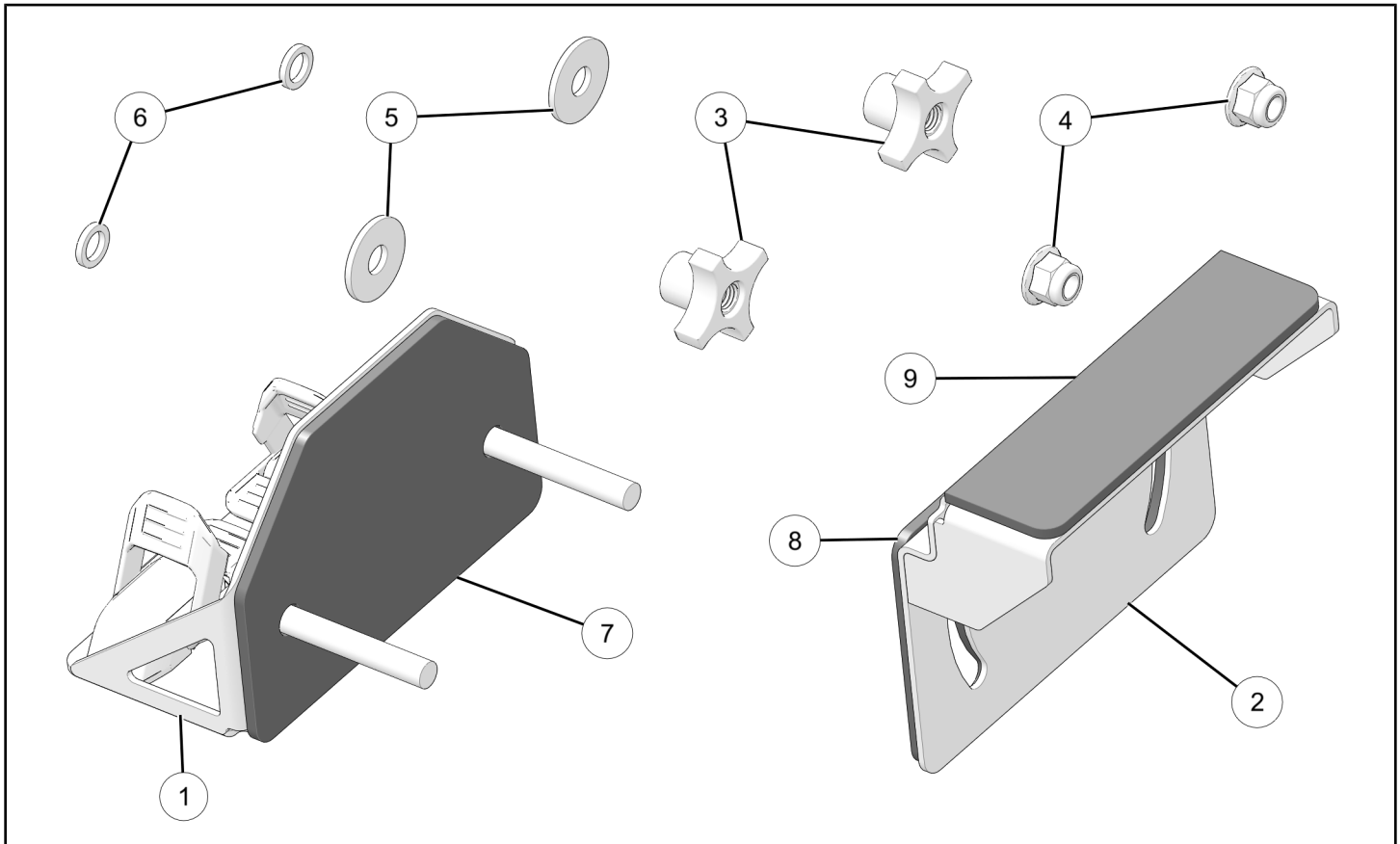
BEFORE YOU BEGIN

Read these instructions and check to be sure all parts and tools are accounted for. Please retain these installation instructions for future reference and parts ordering information.

APPLICATION

Verify accessory fitment at www.polaris.com.

KIT CONTENTS



REF	QTY	PART DESCRIPTION	P/N AVAILABLE SEPARATELY
1	1	Assembly, Weld-Mount, Chainsaw	1028386
2	1	Mount - Chainsaw, Support	n/a
3	2	Knob, M12 x 1.75 mm	7082962
4	2	Nut, Hex Flanged, Nylon Locking M12 x 1.75 mm	7548030
5	2	Washer, Flat, M12 x 3.0 mm	7558717
6	2	Spacer, Nylon - Chainsaw Mount	n/a
7	1	Foam, Inner, Chainsaw Mount (already installed)	5815414

REF	QTY	PART DESCRIPTION	P/N AVAILABLE SEPARATELY
8	1	Foam, Outer, Chainsaw Mount (already installed)	5815415
9	1	Foam, Rest, Chainsaw Mount (already installed)	5815416

TOOLS REQUIRED

- Safety Glasses
- Socket Set, Metric

IMPORTANT

Your Chainsaw Mount Kit is exclusively designed for your vehicle. Please read the installation instructions thoroughly before beginning. Installation is easier if the vehicle is clean and free of debris. For your safety, and to ensure a satisfactory installation, perform all installation steps correctly in the sequence shown.

INSTALLATION INSTRUCTIONS

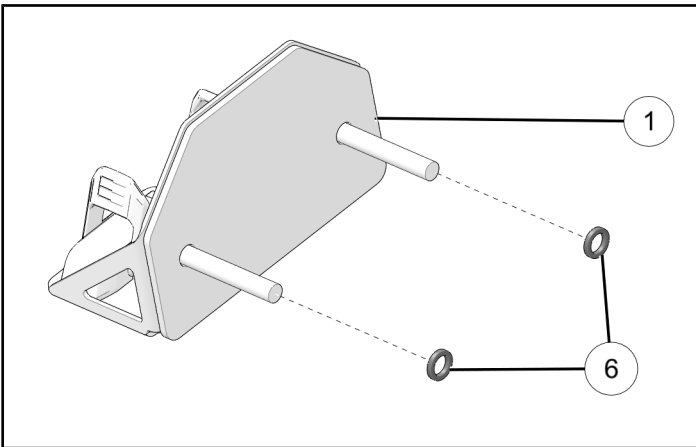
VEHICLE PREPARATION

GENERAL

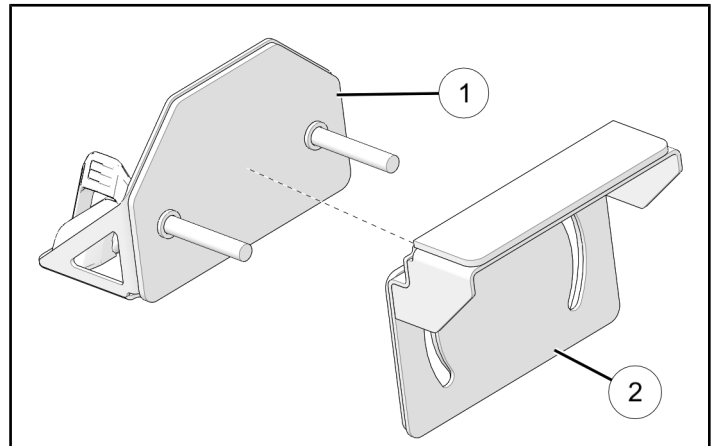
1. Park vehicle on a flat surface.
2. Shift vehicle into PARK.
3. Turn key to OFF position and remove key.

ACCESSORY INSTALLATION

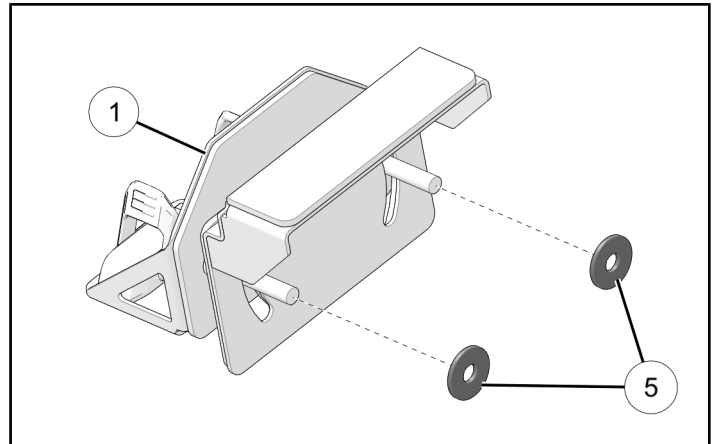
1. Install nylon spacers ⑥ onto mount ① studs.



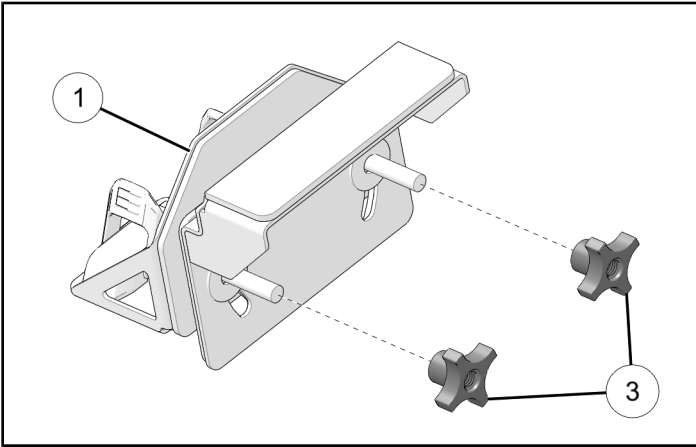
2. Install support mount ② onto mount ① studs.



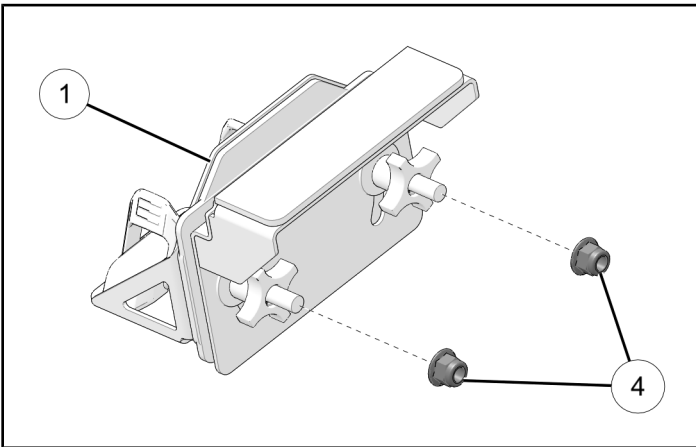
3. Install two washers ⑤ onto mount ① studs.



4. Install two knobs ③ on to mount ① studs.



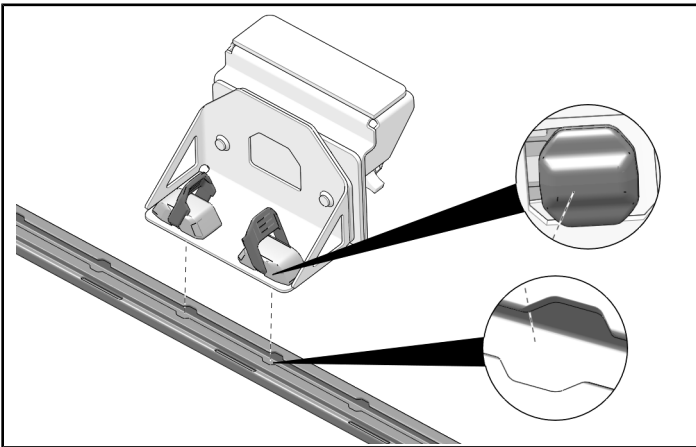
5. Install two nuts ④ until fully seated on to mount ① studs.



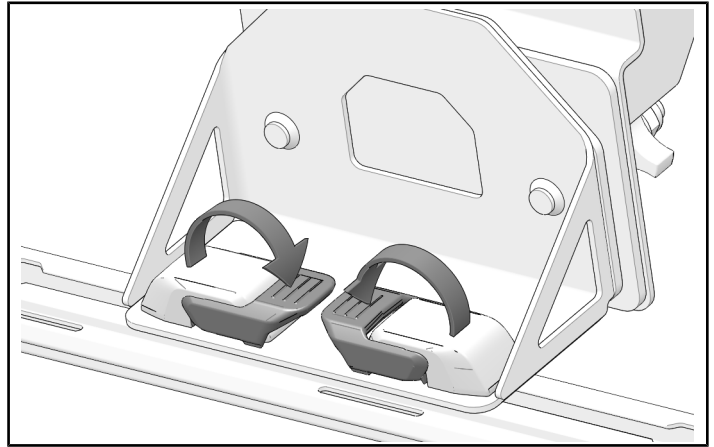
6. Install assembly onto the rail using Lock & Ride MAX® latching assembly.

NOTICE

Assembly can be mounted inside or outside of box.

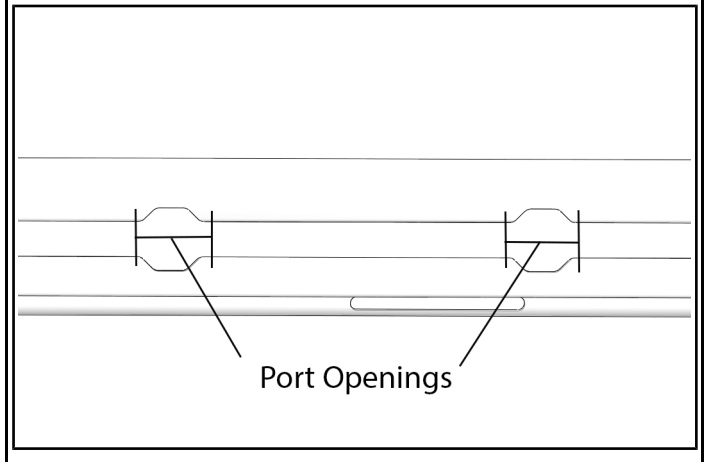


7. Attach assembly to rail by locking the Lock & Ride MAX® latching assembly.



WARNING

Make sure that Lock and Ride MAX® anchors are outside of port openings before locking in place.



8. Install chainsaw in between the weldments and tighten using knobs ③.

