

# HD PLOW FRAME KIT



P/N 2889580

## MISSING OR DAMAGED PARTS

Before beginning assembly, inspect the kit and its component(s) to be sure all parts and tools are accounted for and not damaged. If missing parts or parts are damaged, please contact your Selling Dealer for assistance.

If your accessory was purchased online, please contact POLARIS® customer service at **1-800-POLARIS** (US & Canada only).

## APPLICATION

Verify accessory fitment at [www.polaris.com](http://www.polaris.com).

## REQUIRED SOLD SEPARATELY

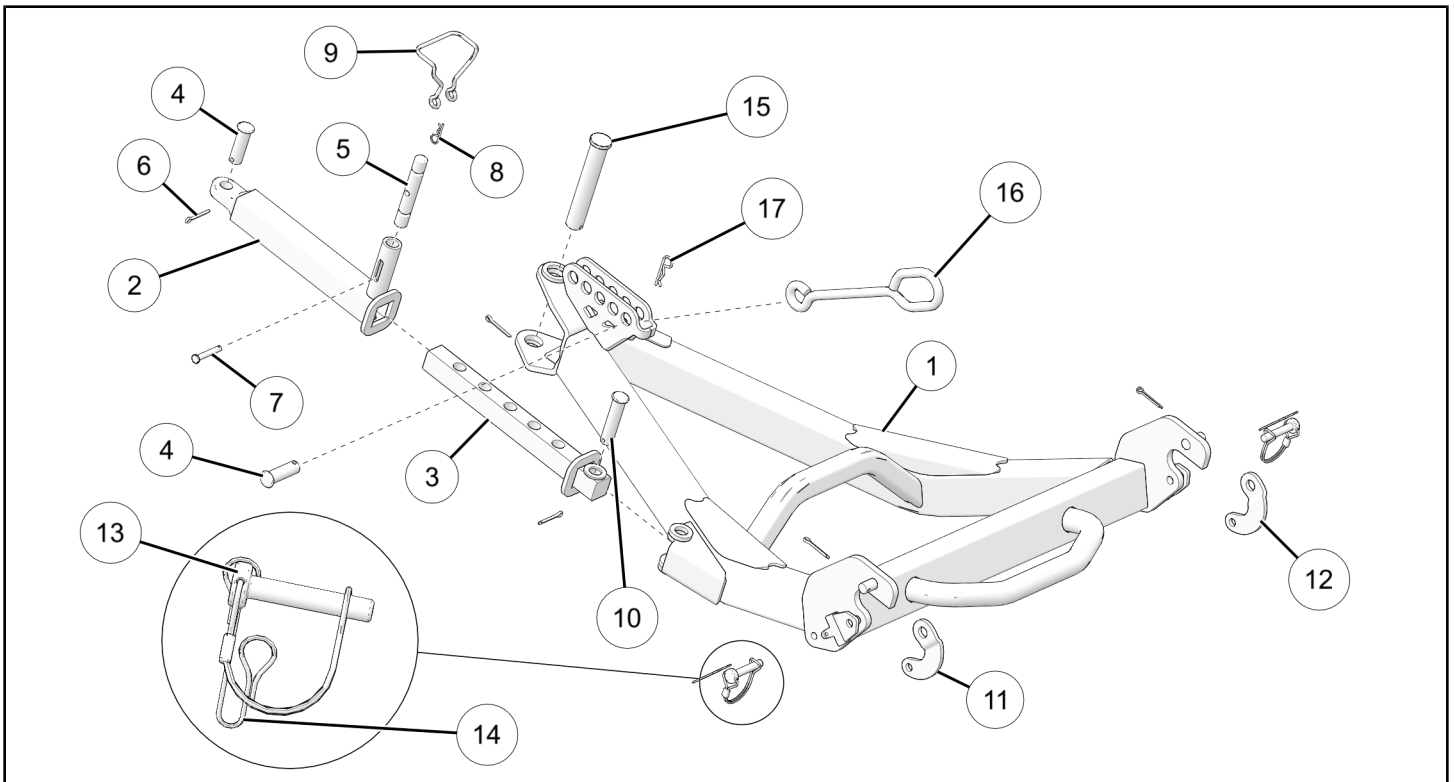
Only parts for installation of the HD Plow Frame Kit are included. Prior installation of the following additional kits are also required (sold separately):

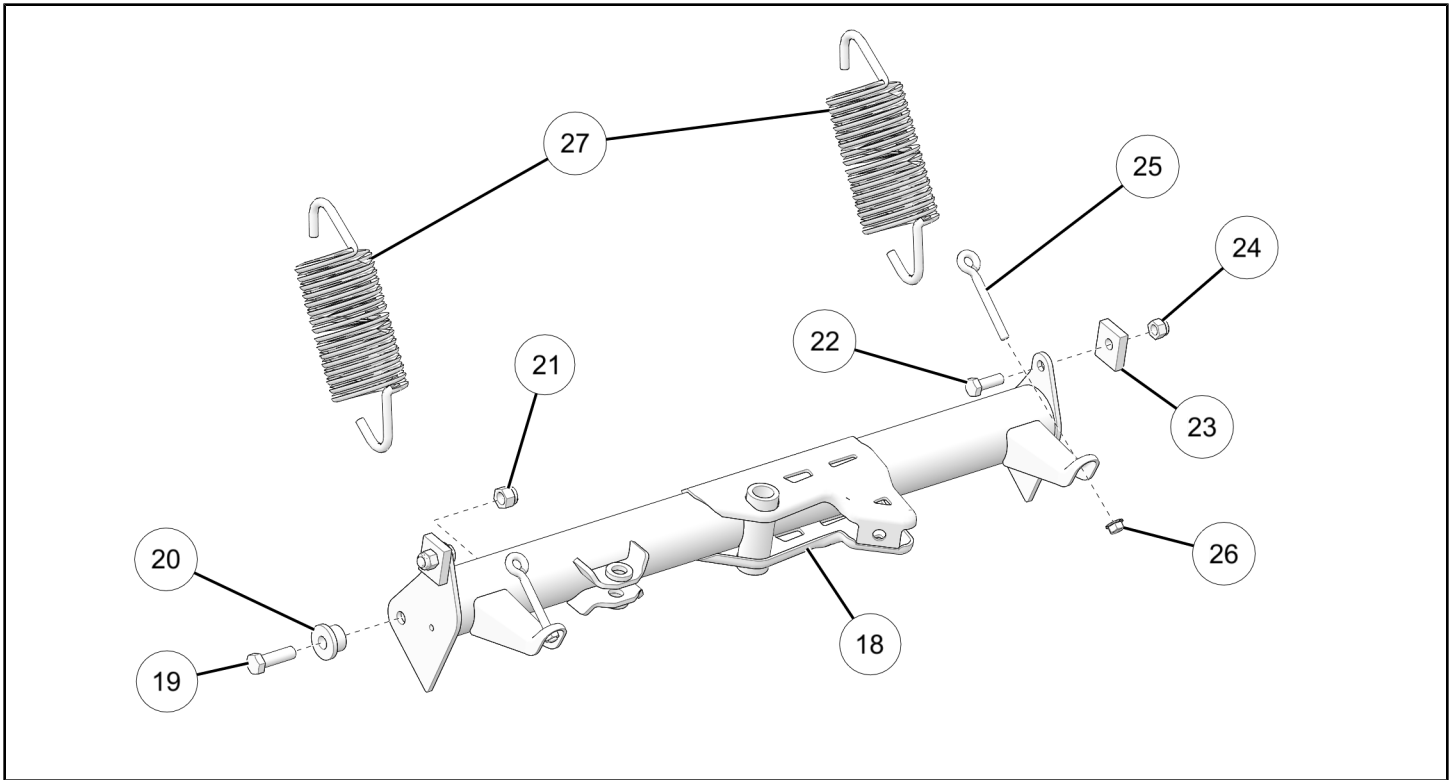
- *Winch Kit*, P/N 2884837, 2884838, or 2884839
- *Bull Bumper Kit*, P/N 2884492 or *HD Front Bumper Kit*, P/N 2884494
- *Snowplow Bumper Mount Kit*, P/N 2889578

For complete installation, the following additional kit is required (sold separately):

- *Plow Blade Kit*

## KIT CONTENTS





REF	QTY	PART DESCRIPTION	P/N AVAILABLE SEPARATELY	AVAILABLE SERVICE KIT
1	1	Push Frame	n/a	n/a
2	1	Angling Outer Tube	n/a	n/a
3	1	Slide Bar	n/a	n/a
4	2	Clevis Pin 14 x 45 mm	n/a	2209961
5	1	Shear Pin	n/a	2205527
6	5	Cotter Pin 3 x 25 mm	n/a	2209961
7	1	Clevis Pin	n/a	n/a
8	1	R Pin	n/a	n/a
9	1	Shear Pin Handle	n/a	n/a
10	1	Clevis Pin 14 x 60 mm	n/a	n/a
11	1	Left Hook Plate	n/a	2209961
12	1	Right Hook Plate	n/a	2209961
13	2	Lock Pin	n/a	2209961
14	2	Lanyard	n/a	2209961
15	1	Clevis Pin	n/a	n/a
16	1	Winch Link Rod	n/a	2209961
17	1	R Pin (short)	n/a	2209961
18	1	Pivot	n/a	n/a
19	2	Screw, Hex M12 x 1.75 x 40 mm	n/a	n/a
20	2	Pivot Sleeve	n/a	n/a

REF	QTY	PART DESCRIPTION	P/N AVAILABLE SEPARATELY	AVAILABLE SERVICE KIT
21	2	Nut, Nylon M12 x 1.75 mm	n/a	n/a
22	2	Screw, Hex M10 x 1.5 x 30 mm	n/a	n/a
23	2	Blade Stopper	n/a	n/a
24	2	Nut, Nylon M10 x 1.5 mm	n/a	n/a
25	2	Eyebolt M8 x 1.25 x 70 mm	n/a	n/a
26	2	Nut, Hex Flange M8 x 1.25 mm	n/a	n/a
27	2	Trip Spring	n/a	n/a

## TOOLS REQUIRED

- Safety Glasses
- Pliers, Needle Nose
- Socket Set, Metric
- Wrench Set, Metric

## IMPORTANT

Your HD Plow Frame Kit is exclusively designed for your vehicle. Please read the installation instructions thoroughly before beginning. Installation is easier if the vehicle is clean and free of debris. For your safety, and to ensure a satisfactory installation, perform all installation steps correctly in the sequence shown.

## INSTALLATION INSTRUCTIONS

### VEHICLE PREPARATION

#### GENERAL

1. Park vehicle on a flat surface.
2. Shift vehicle into PARK.
3. Turn key to OFF position and remove key.

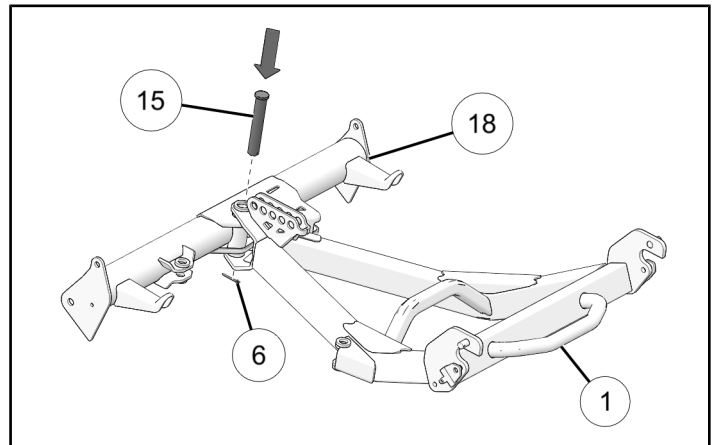
### ACCESSORY INSTALLATION

#### IMPORTANT

The use of a Pro HD 4500 lb. winch or a Polaris winch with the combination of Pro HD auto-stop and synthetic winch rope are recommended for use with this plow system to prevent premature failure of the winch cable. The winch should be installed on the vehicle prior to installing this kit.

### PIVOT ASSEMBLY

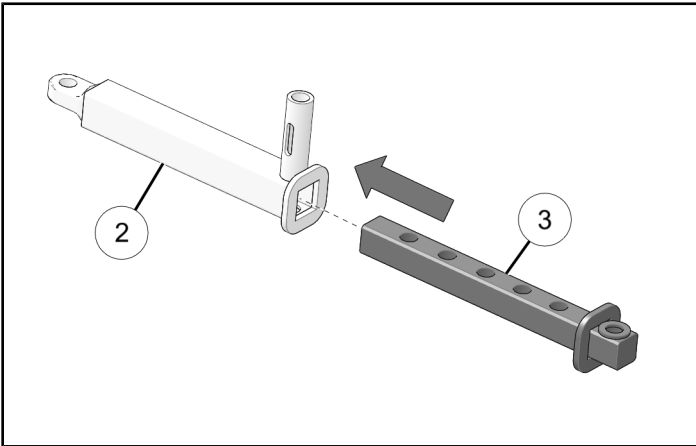
1. Assemble push frame ① to center of pivot ⑱.



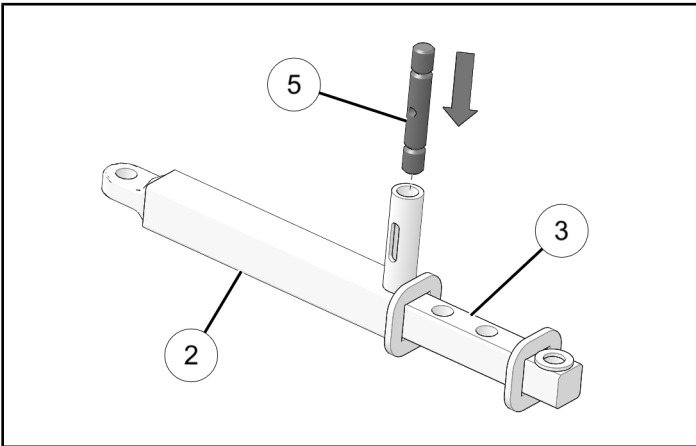
2. Install clevis pin ⑮ from top down through center pivot. Install cotter pin ⑥ through hole at bottom of pin.

## MANUAL ANGLE MECHANISM ASSEMBLY

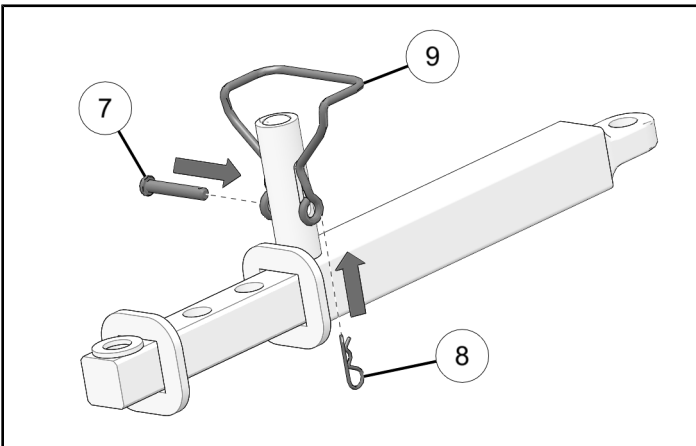
1. Assemble slide bar ③ to angling outer tube ②.



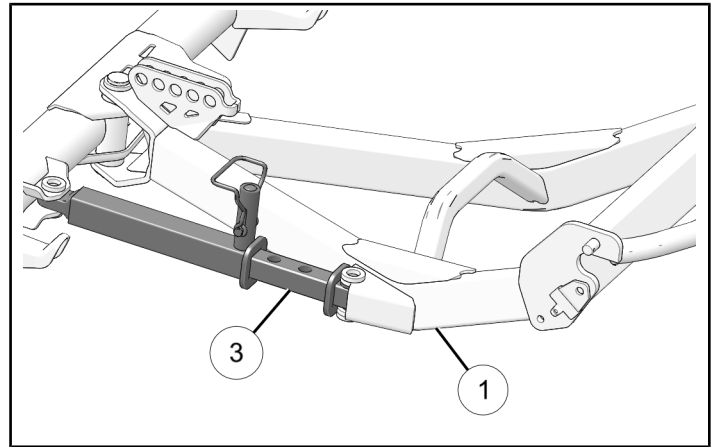
2. Install shear pin ⑤.



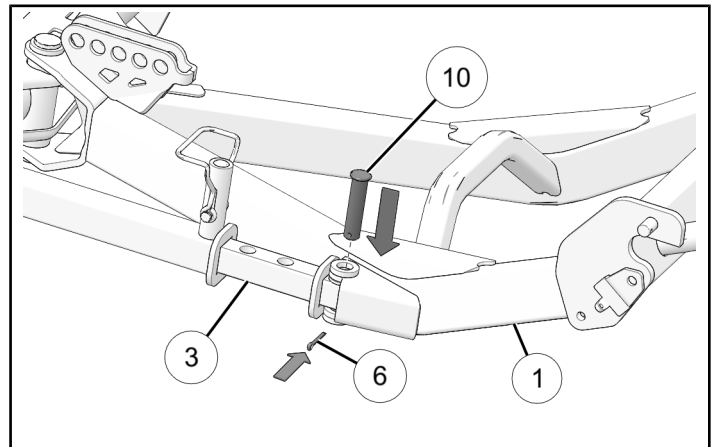
3. Install clevis pin ⑦ through shear pin handle ⑨ and shear pin. Install R-pin ⑧ to hold clevis pin.



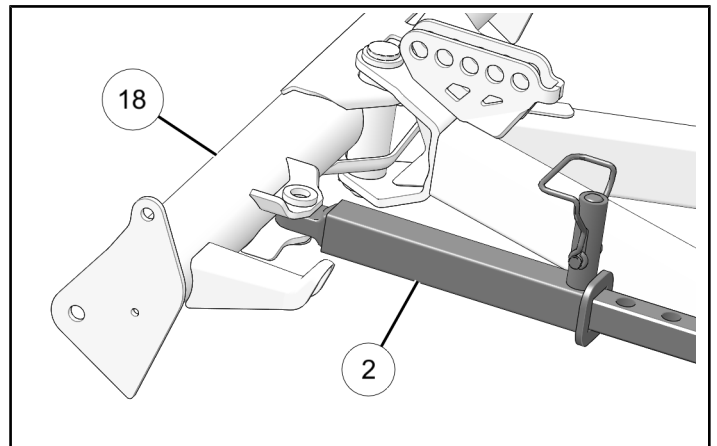
4. Align hole at end of slide bar ③ with holes in push frame ① bracket as shown.



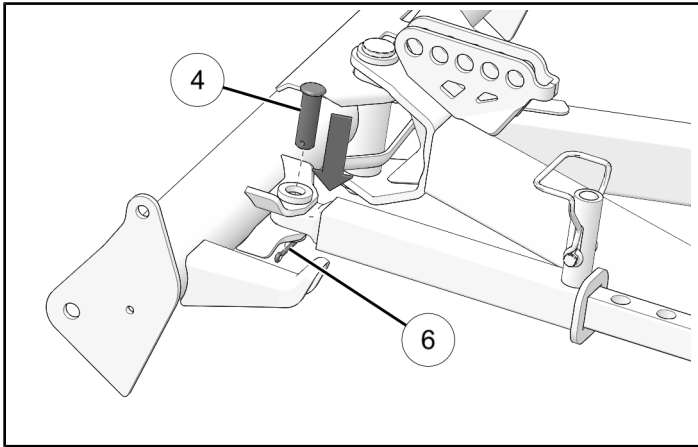
5. Install clevis pin ⑩. Once in place, install cotter pin ⑥ and bend ends so that it cannot be removed.



6. Align hole at end of outer tube ② with holes in pivot ⑱ as shown.

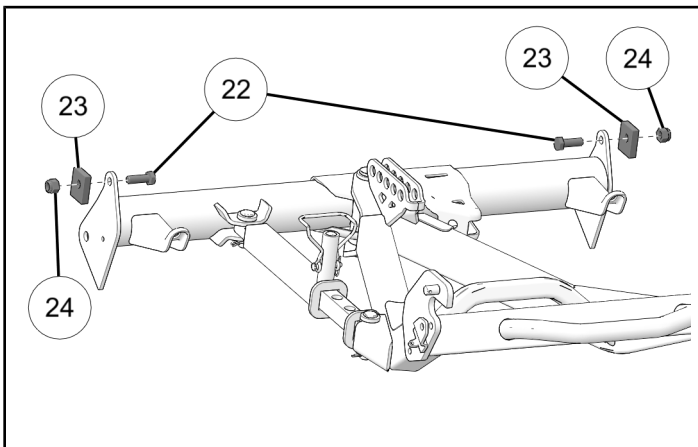


7. Install clevis pin ④. Once in place, install cotter pin ⑥ and bend ends so that it cannot be removed.



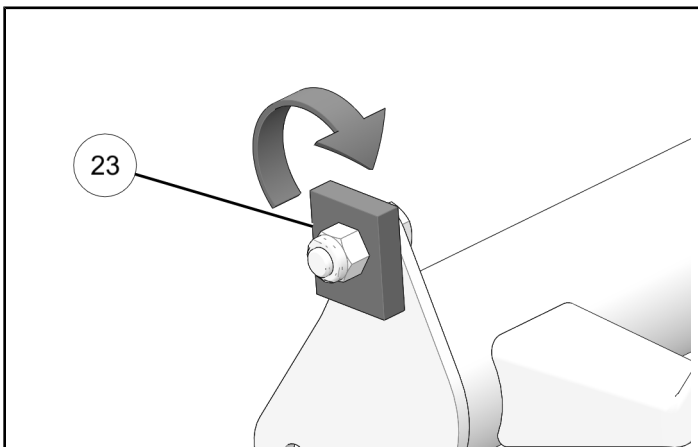
### BLADE STOP ASSEMBLY

1. Install blade stopper ⑳, nut ㉔, and bolt ㉒ on each side of pivot .



#### NOTICE

You can rotate each blade stopper ㉓ to adjust blade stop location.



2. Make sure both blade stoppers are mounted in same position. Torque nut to specification.

#### TORQUE

Blade Stop Nut:  
35 ft-lbs (47 N·m)

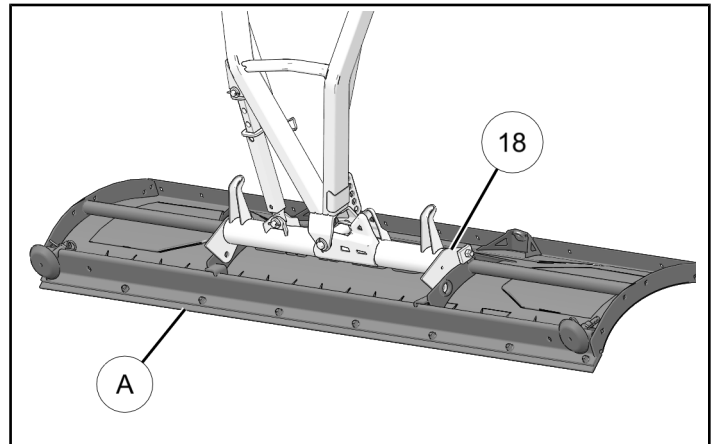
### PLOW ASSEMBLY INSTRUCTIONS

1. Set plow blade ㉑ on ground with rear of blade facing up.

#### NOTICE

Take care to lay blade on a clean surface to avoid damaging blade during installation. Use blade packaging to protect blade during this step if possible.

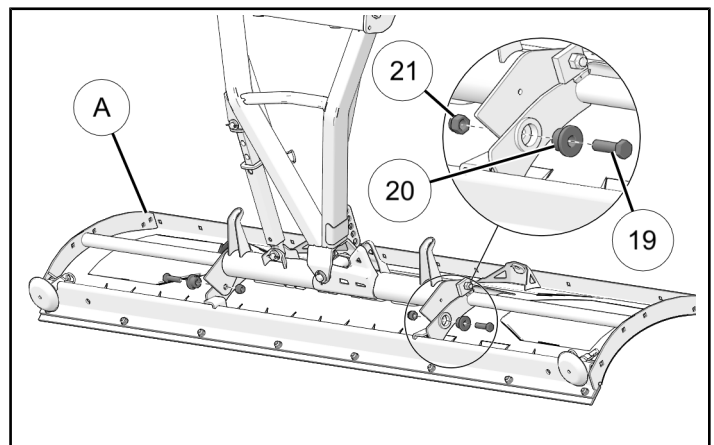
2. Align mounting holes in pivot ⑱ with mounting holes in blade ㉑ as shown.



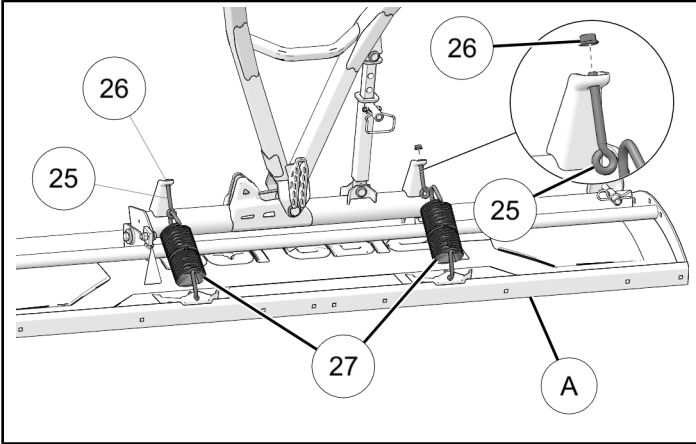
3. Install two pivot sleeves ㉒ into holes of plow ㉑ with two bolts ㉑ and two nylon nuts ㉓. Torque nuts ㉓ to specification.

#### TORQUE

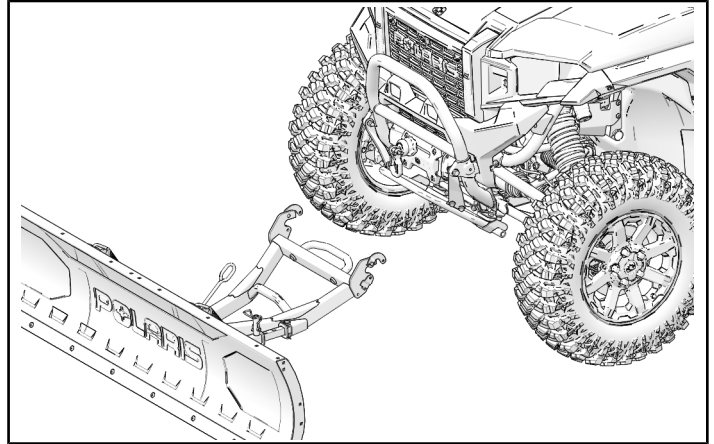
Nuts ㉓:  
65 ft-lbs (88 N·m)



- Hook one end of plow spring (27) to upper holes of plow (A). Attach other end of spring to pivot using supplied two eye bolts (25) and two nuts (26).

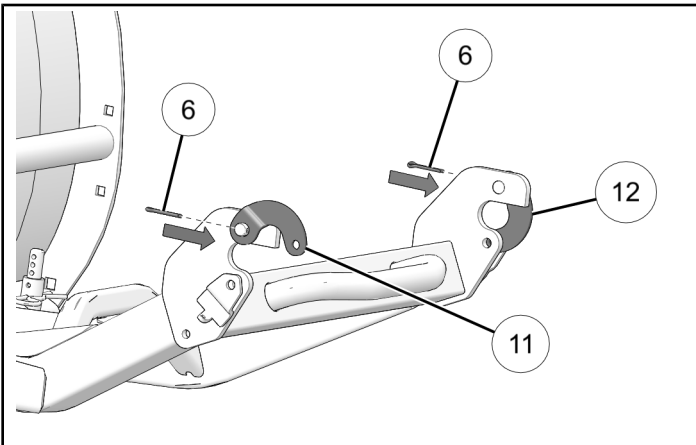


- Set plow assembly on ground in front of vehicle. Make sure lock pins are removed to allow hook plates to swing freely.

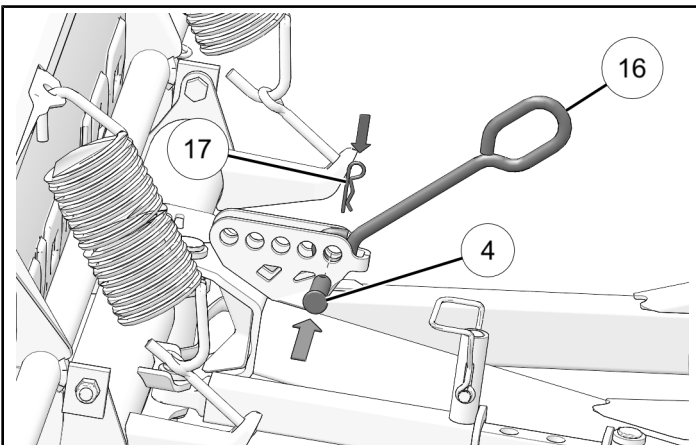


## PLOW INSTALLATION

- Install left hook plate (11) and right hook plate (12) on push frame. Insert cotter pins (6) and bend ends so that they cannot be removed.



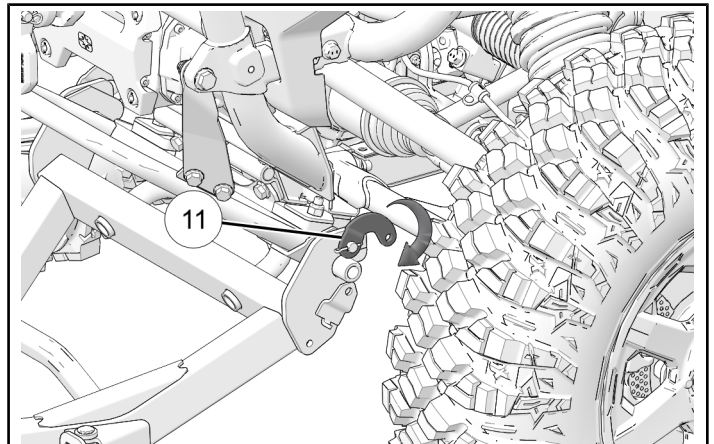
- Install winch link rod (16) using clevis pin (4) and short R-pin (17).



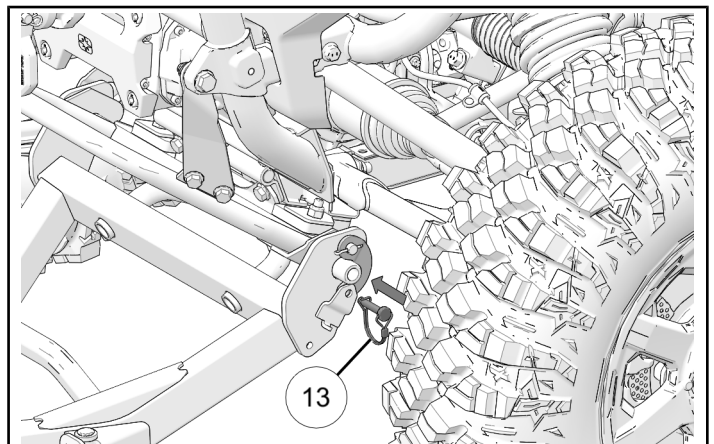
- Move assembly toward vehicle so that push frame attachment pockets slide onto vehicle's plow mounting bar. Close hook plates (11), (12) around mounting bar.

### NOTICE

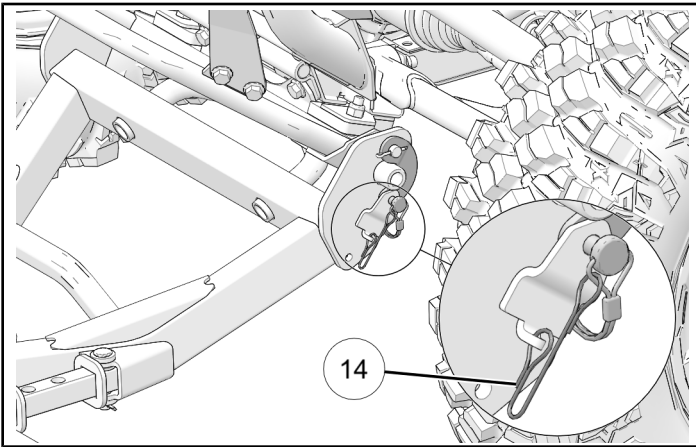
Left side shown; right side similar.



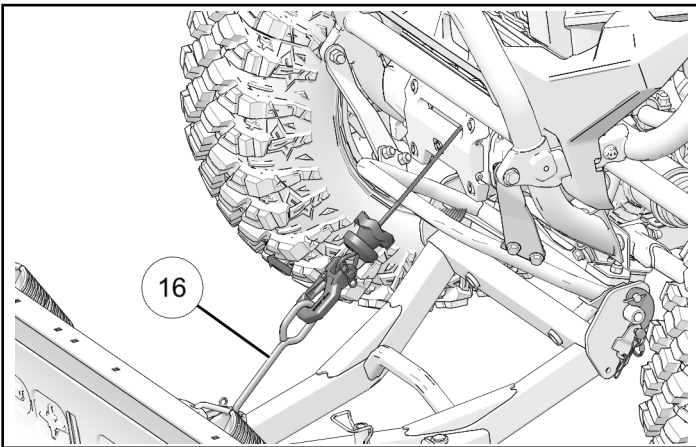
- Install lock pins (13) to hold hook plates closed.



6. Use lanyard ⑭ to attach each lock pin to push frame.

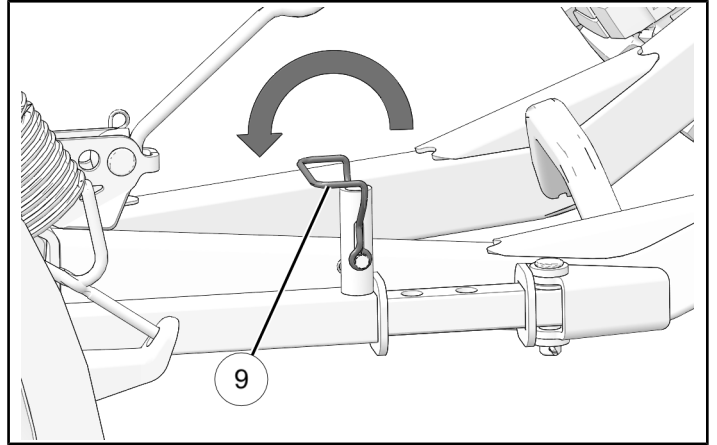


7. Attach winch hook to winch link rod ⑯.

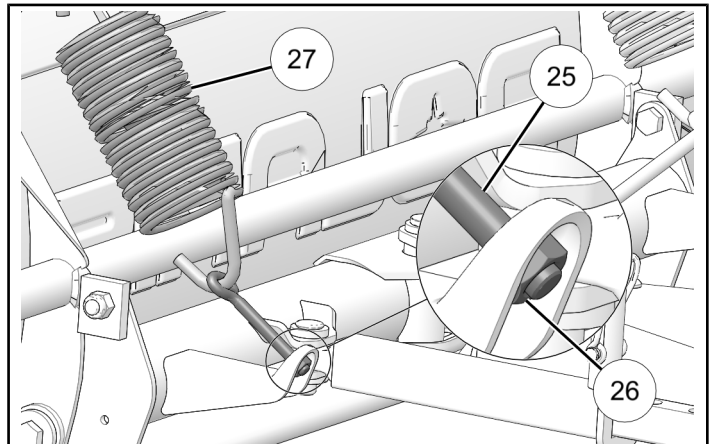


## **PLOW OPERATION INSTRUCTIONS**

- To adjust angle of plow so it pushes to side, lift plow up with winch to clear ground. Move shear pin handle ⑨ forward or backward to unlock. Pull up to disengage shear pin. This will allow plow to be angled to one of pre-determined angles. Once in desired position secure plow in position by pushing shear pin back down into one of holes nearest your desired position and move handle back into locked position.



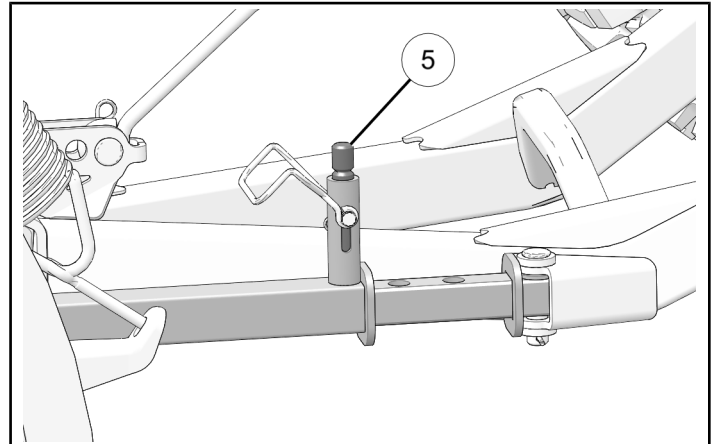
- The plow is designed to trip forward when it hits a solid object. When pressure on plow is released, it will return to its original position by itself. Trip springs ⑳ may be set stiffer by tightening nuts ㉔ located at ends of eyebolts ㉕. For less tension, loosen the nuts.





- In the event of a collision with an obstacle at a speed greater than that recommended for system, the shear pin ⑤ of manual angle mechanism will break to minimize force of impact in frame. If shear pin is broken, inspect plow system for damaged

parts. If any part is damaged, the impact velocity was greater than what system is designed to support. You must then buy a replacement part from your dealer.



## OPERATION

### IMPORTANT

Read and understand the following operating instructions to avoid severe personal injury or death. Compliance with these measures will also ensure that your snow plow will give you many years of good use.

1. Re-torque all bolts and nuts after the first 30 minutes of use.
2. Do not exceed 5 mph (8 km/h) with blade installed.
3. Operate with extreme caution on slopes, grades, and rough terrain.
4. Keep bystanders away from blade and vehicle while in motion.
5. Do not allow riders on blade or vehicle when plowing.
6. When plowing snow or dirt into a pile, start backing up before raising blade.
7. Do not ram blade into a snow pile. Slow down before hitting a pile.
8. Be aware of possible hidden objects under the snow.
9. Read the blade Owner's Manual, vehicle's Owner's Manual, and Safety Decals prior to operation.
10. Always wear appropriate protective clothing as recommended in your vehicle's Owner's Manual.
11. Before you adjust blade angle: stop engine, set and lock brakes, and raise blade with winch. Do not attempt to raise blade by hand.

12. Lower blade to down position when blade and vehicle are not in use.
13. Polaris® recommends that you remove blade and plow frame from vehicle before you ride.

## BLADE LEVELING

Plow blade should be positioned so that bottom of plow shoe ① is parallel with ground surface. To adjust blade, loosen nut ②. Turn blade stopper ③ to position that allows best angle for plow shoe. Then torque nut ④ to specification.

### NOTICE

Right side shown; left side similar.

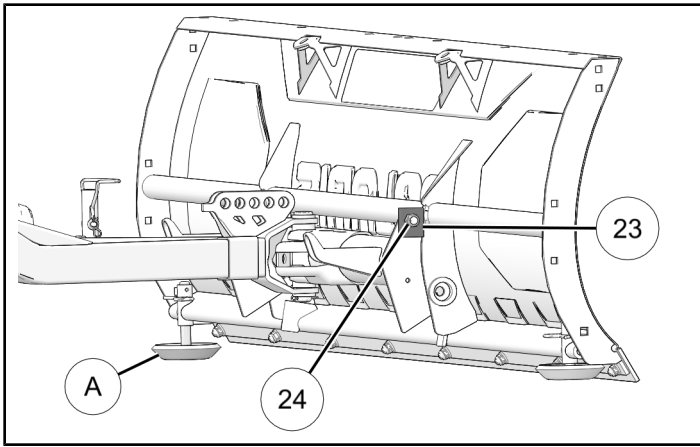
### NOTICE

Make sure that blade stoppers on both sides are set to same position.

### TORQUE

Nut ④:  
**35 ft-lbs (47 N·m)**





## PLOW SHOE HEIGHT ADJUSTMENT

When plowing asphalt or concrete surfaces, raise plow shoes to highest position. This will allow plow wear bar to rest on surface, and completely remove snow from surface.

When plowing gravel, dirt, or grass surface, lower plow shoes to desired position. This will allow a space between wear bar and plowed surface, preventing bar from digging in to surface.

### *NOTICE*

Make sure that left and right shoes are adjusted equally.