

GUN MOUNT KIT



P/N 2889931

BEFORE YOU BEGIN

Read these instructions and check to be sure all parts and tools are accounted for. Please retain these installation instructions for future reference and parts ordering information.

APPLICATION

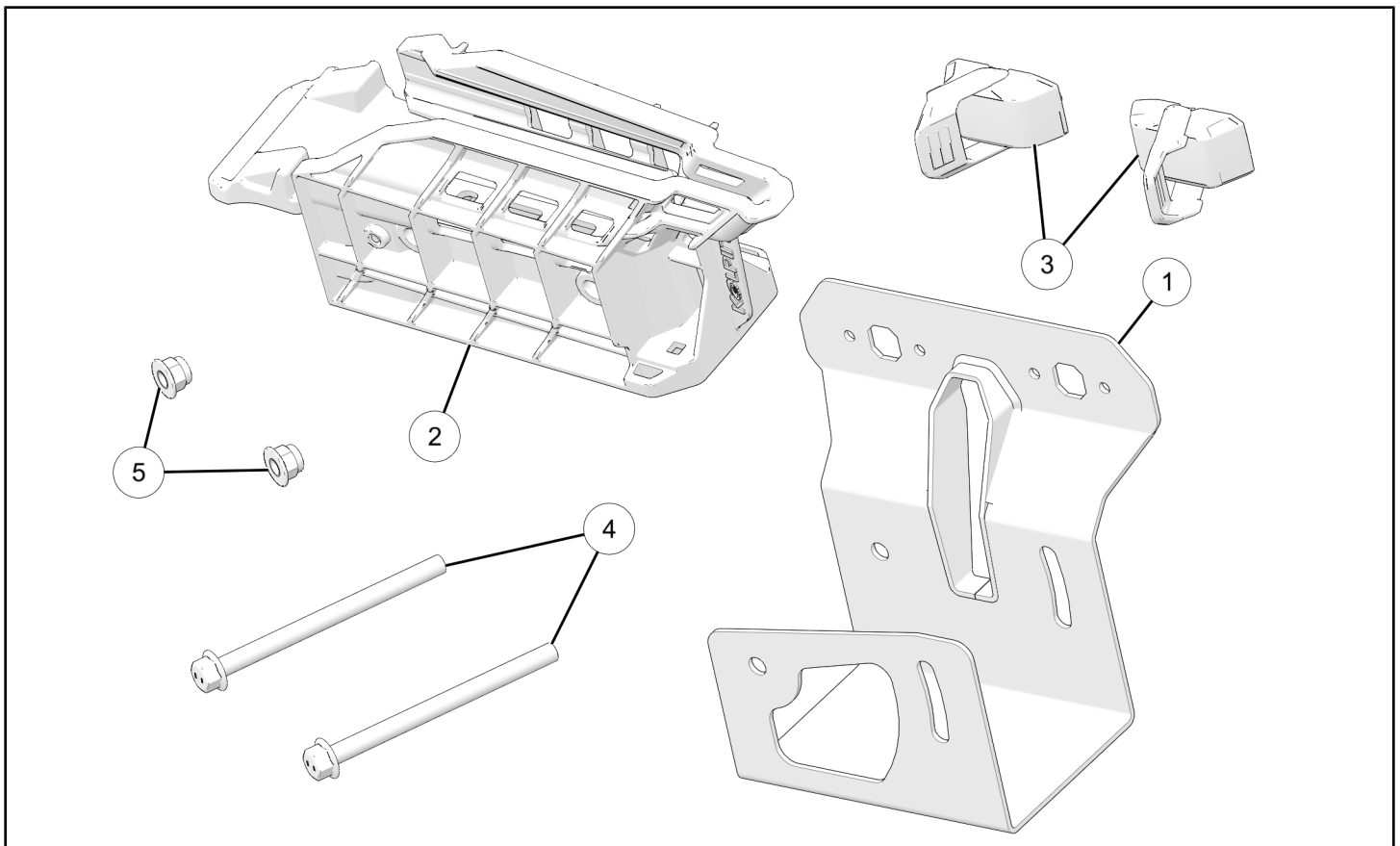
Verify accessory fitment at www.polaris.com.

REQUIRED SOLD SEPARATELY

Only parts for installation of the Gun Mount Kit are included. For complete installation, the following additional kit is required (sold separately):

- *Main Bed Rack* P/N 2889847

KIT CONTENTS



REF	QTY	PART DESCRIPTION	P/N AVAILABLE SEPARATELY
1	1	Weld Mount, Gun Boot	n/a
2	1	Stronghold Mount	2636942
3	2	Lock & Ride MAX® Latching Assembly	2638786

REF	QTY	PART DESCRIPTION	P/N AVAILABLE SEPARATELY
4	2	Screw, Hex, Flange Head, M10 x 1.5 x 35 mm	7521333
5	2	Nut, Hex, Flange Head, M10 x 1.5 mm	7548029

TOOLS REQUIRED

- Safety Glasses
- Socket Set, Metric
- Socket Set, Hex Bit, Metric
- Torque Wrench

IMPORTANT

Your Gun Mount Kit is exclusively designed for your vehicle. Please read the installation instructions thoroughly before beginning. Installation is easier if the vehicle is clean and free of debris. For your safety, and to ensure a satisfactory installation, perform all installation steps correctly in the sequence shown.

INSTALLATION INSTRUCTIONS

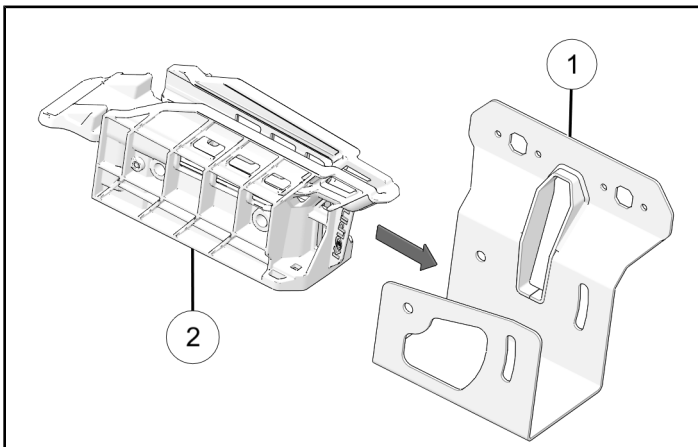
VEHICLE PREPARATION

GENERAL

1. Park vehicle on a flat surface.
2. Shift vehicle into PARK.
3. Turn key to OFF position and remove key.

ACCESSORY INSTALLATION

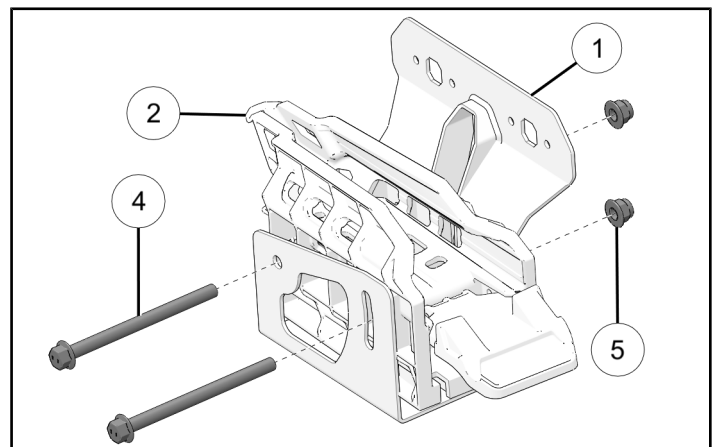
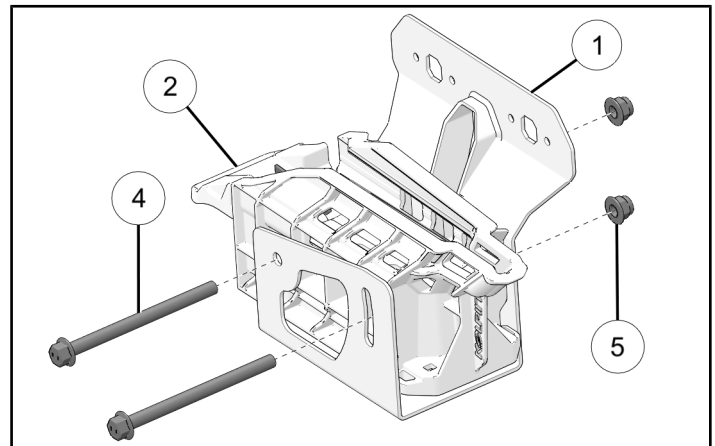
1. Align stronghold mount ② to mount assembly ①.



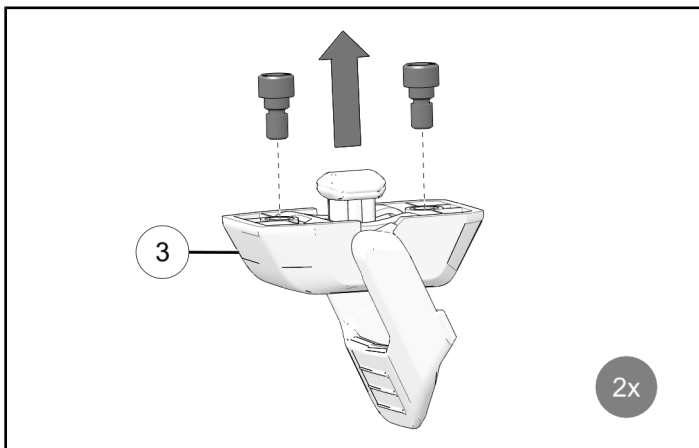
2. Loosely install stronghold mount ② to mount assembly ① with screws ④ and nuts ⑤.

NOTICE

Stronghold mount can be installed facing either direction.



- Remove and keep two screws from bottom of Lock & Ride MAX® latching assembly ③.



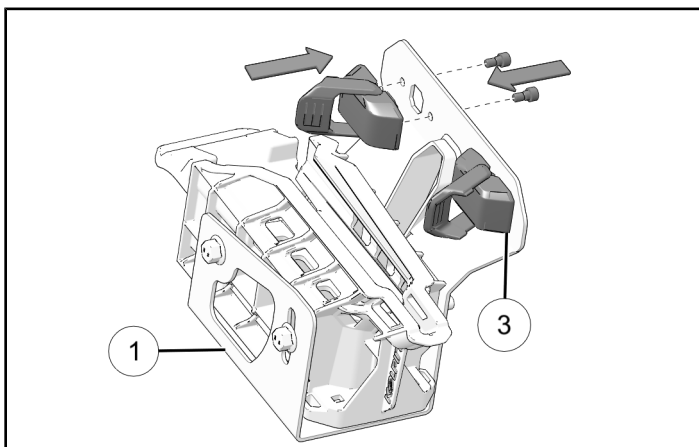
- Install latching assembly ③ to mount ① and torque to specification.

NOTICE

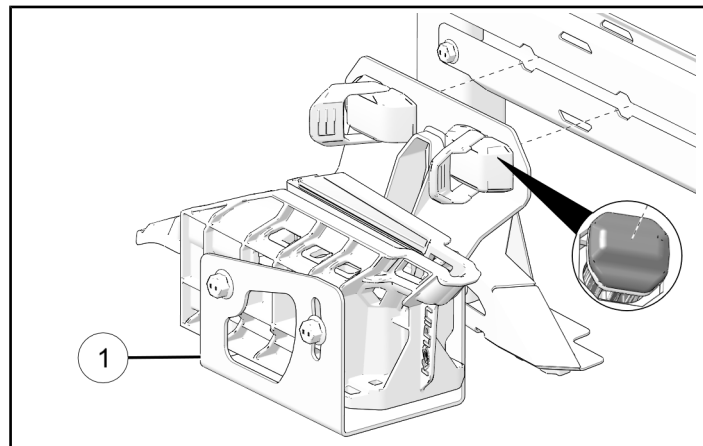
Check spring alignment and orientation while installing latching assembly.

TORQUE

Latching Assembly Screws:
44 in-lbs (5 N·m)



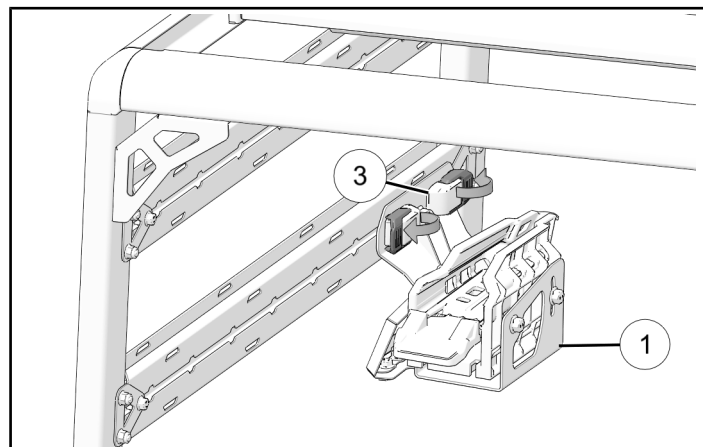
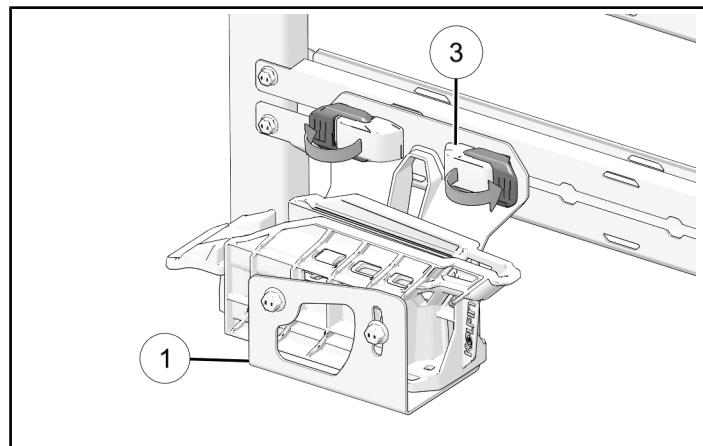
- Attach assembly ① to main bed rack. Make sure that bottoms of latching assemblies fit through port openings in rail.



- Slide mount assembly ① to desired location. Push down lever on latching assembly ③ to lock into.

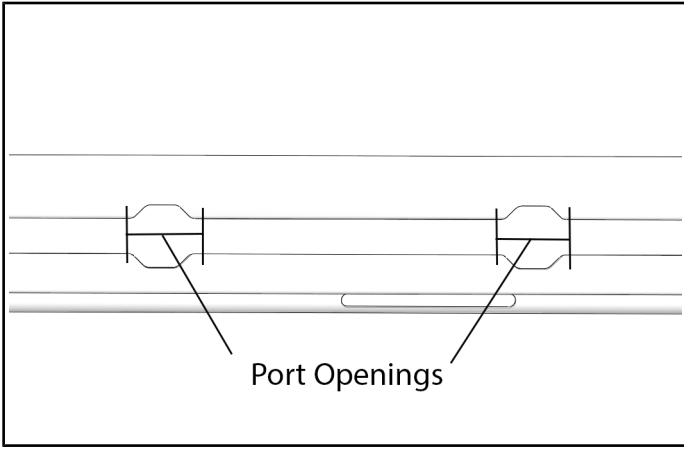
NOTICE

Assembly can be mounted on the inside or outside rail of the main bed rack.



⚠ WARNING

Make sure that Lock and Ride MAX[®] are outside of the port openings before locking in place.



7. Torque hardware to specification.

TORQUE

Gun Mount Nuts ⑤:
36.8 ft-lbs (50 N·m)

