

# SPARE TIRE MOUNT KIT



P/N 2889110

## BEFORE YOU BEGIN

Read these instructions and check to be sure all parts and tools are accounted for. Please retain these installation instructions for future reference and parts ordering information.

## APPLICATION

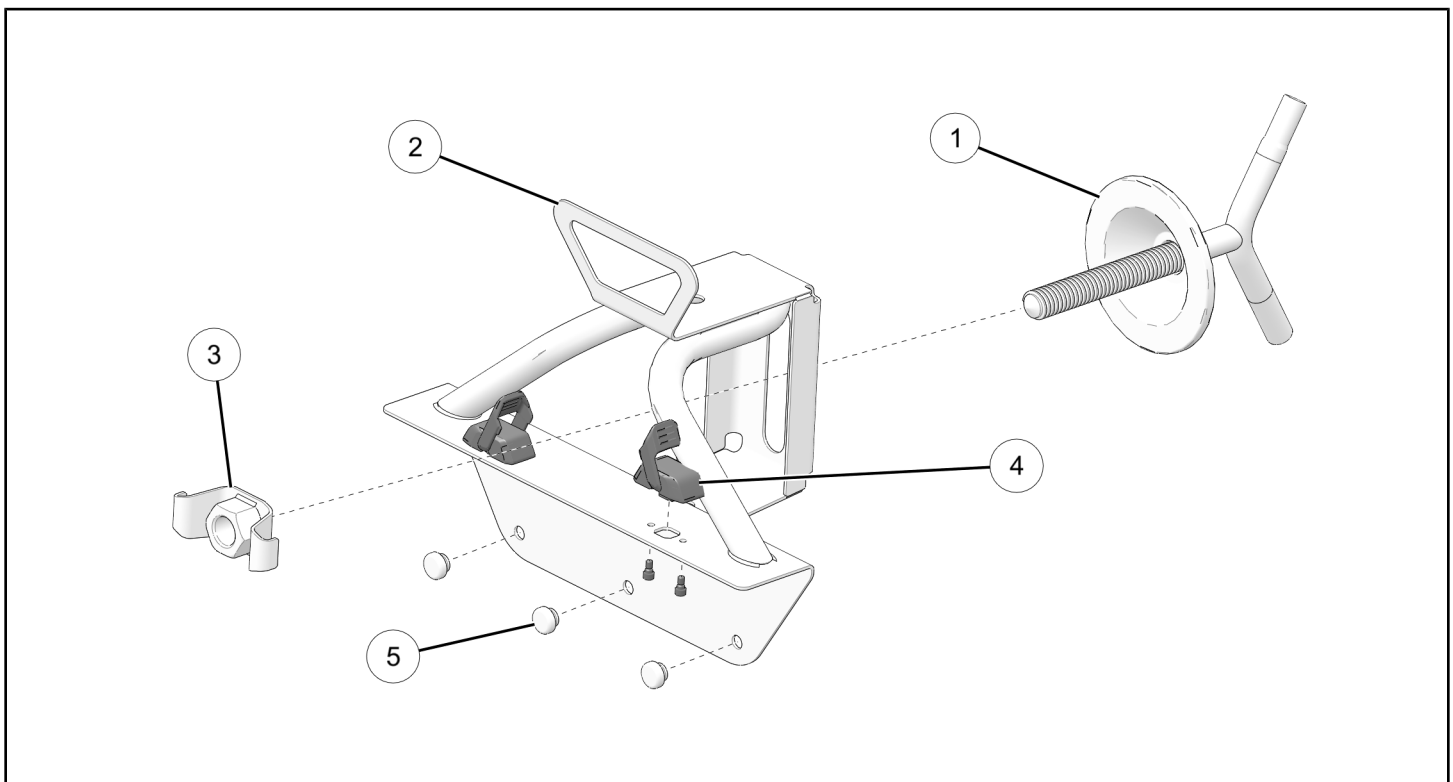
Verify accessory fitment at [www.polaris.com](http://www.polaris.com).

## REQUIRED SOLD SEPARATELY

Only parts for installation of the Spare Tire Mount Kit are included. For complete installation, the following additional item is required (sold separately):

- Spare Tire, Mounted on Wheel

## KIT CONTENTS



REF	QTY	PART DESCRIPTION	P/N AVAILABLE SEPARATELY
1	1	Handle	1024899
2	1	Spare Tire Mount	1027874
3	1	Tire Nut	1027875
4	2	Lock & Ride MAX® Latching Assembly	2638786
5	3	Rubber Bumper	5412067

## TOOLS REQUIRED

- Safety Glasses
- Hex Key Set, Metric
- Socket Set, Hex Bit, Metric
- Torque Wrench

## IMPORTANT

Your Spare Tire Mount Kit is exclusively designed for your vehicle. Please read the installation instructions thoroughly before beginning. Installation is easier if the vehicle is clean and free of debris. For your safety, and to ensure a satisfactory installation, perform all installation steps correctly in the sequence shown.

## INSTALLATION INSTRUCTIONS

### VEHICLE PREPARATION

#### GENERAL

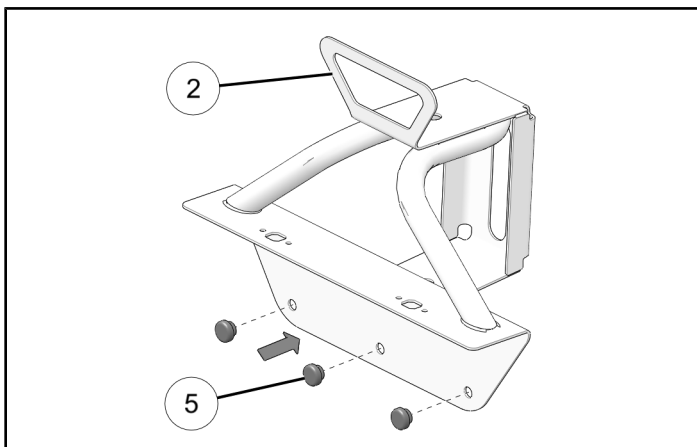
1. Park vehicle on a flat surface.
2. Shift vehicle into PARK.
3. Turn key to OFF position and remove key.

### ACCESSORY INSTALLATION

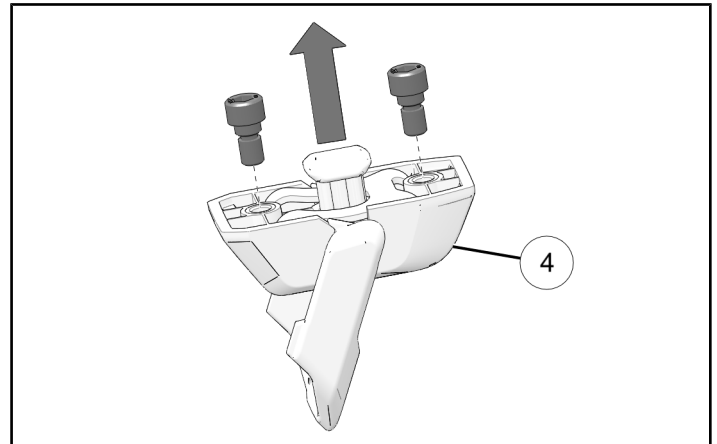
1. Install three rubber bumpers ⑤ into spare tire mount ②.

#### TIP

Applying soapy water to rubber bumpers may aid installation.



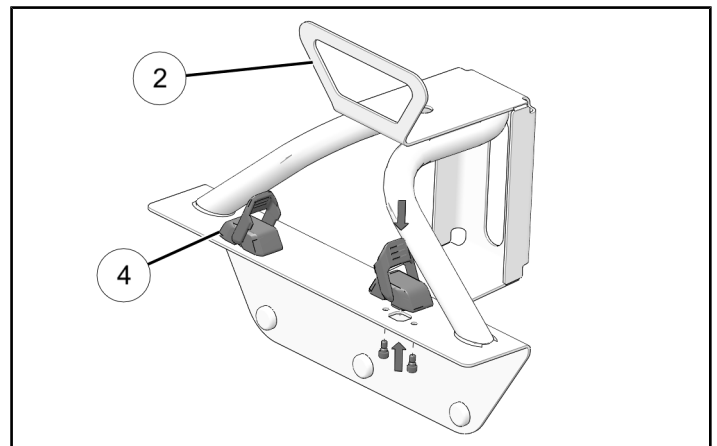
2. Remove and keep two screws from bottom of each Lock & Ride MAX® latching assembly ④.



3. Assemble two latching assemblies ④ to mount ②. Torque screws to specification.

#### TORQUE

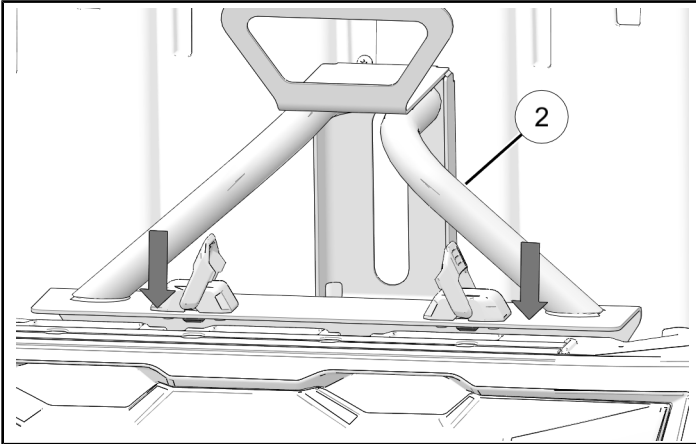
Latching Assembly Screws:  
**44 in-lbs (5 N·m)**



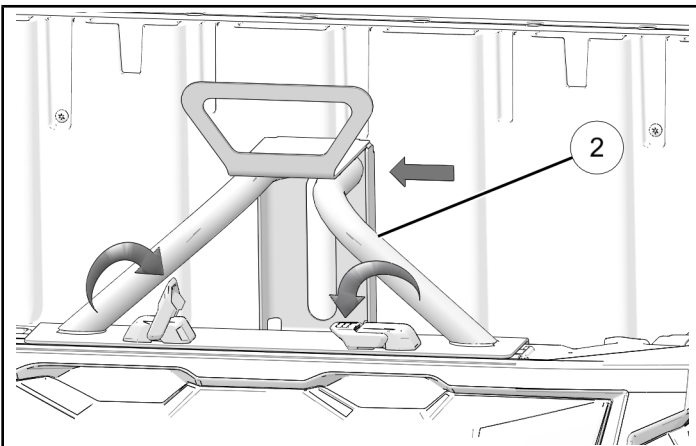
4. Lower mount ② onto box rail. Make sure that bottoms of latching assemblies fit through port openings in rail.

**NOTICE**

Left side installation shown. Mount can also be installed on right side.

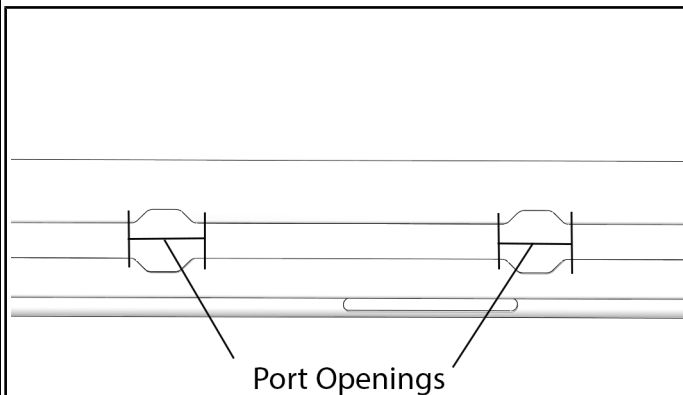


5. Slide mount ② to desired position. Push down levers on latching assemblies to lock mount in place.



**⚠ WARNING**

Make sure that the Lock and Ride MAX® anchors are outside of the port openings.



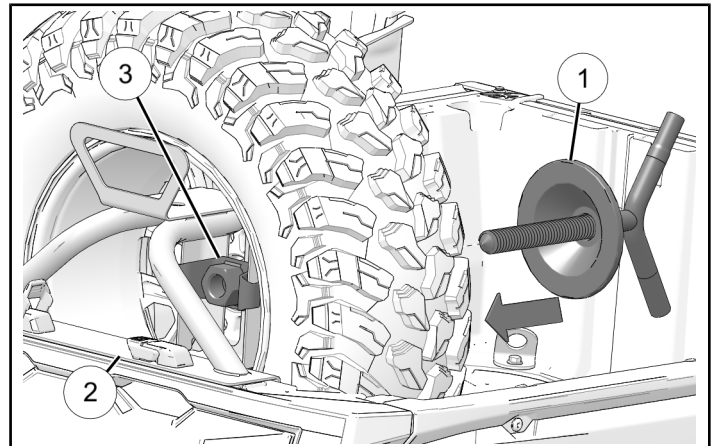
6. Place tire on mount with rim pushed as close to box wall as possible. Rim should rest on mount.



7. Hold tire nut ③ on inside of mount while turning handle ① into nut. Tighten handle by hand as tight as possible.

**NOTICE**

Cone on handle can be reversed to accommodate different wheel configuration or orientation.



8. Handle ① can also be used as lug wrench.

