

# KEY CORE KIT



P/N 2889848

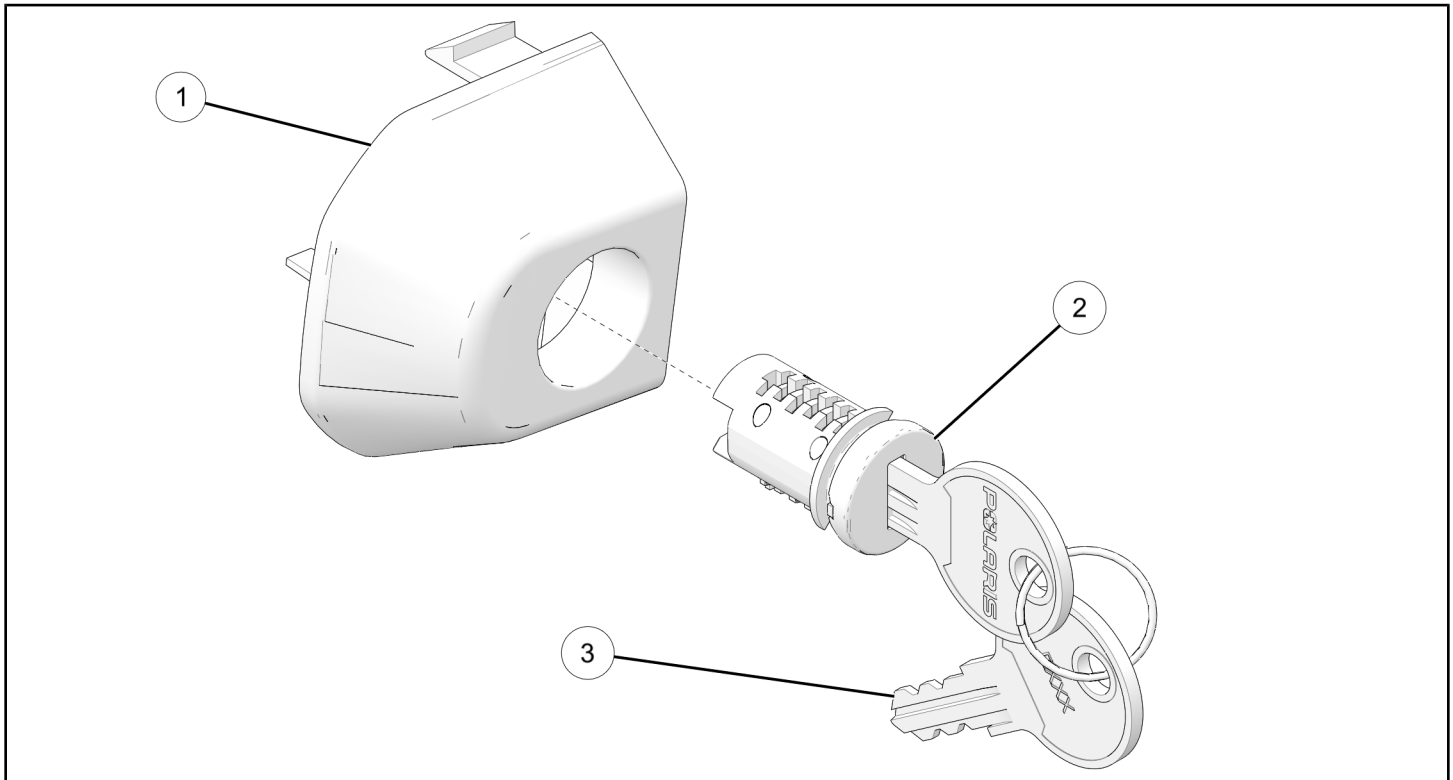
## BEFORE YOU BEGIN

Read these instructions and check to be sure all parts and tools are accounted for. Please retain these installation instructions for future reference and parts ordering information.

## APPLICATION

Verify accessory fitment at [www.polaris.com](http://www.polaris.com).

## KIT CONTENTS



REF	QTY	PART DESCRIPTION	P/N AVAILABLE SEPARATELY	AVAILABLE SERVICE KIT
1	4	Adapter	5457811	n/a
2	7	Key Core	n/a	7082789
3	2	Key	n/a	7082789

## TOOLS REQUIRED

- **Special Service Tool:**
  - Non-marring Pry Tool, P/N 5456907 (or equivalent)

## CONSUMABLES REQUIRED

- Tape, Masking

## IMPORTANT

Your Key Core Kit is exclusively designed for your vehicle. Please read the installation instructions thoroughly before beginning. Installation is easier if the vehicle is clean and free of debris. For your safety, and to ensure a satisfactory installation, perform all installation steps correctly in the sequence shown.

# INSTALLATION INSTRUCTIONS

## VEHICLE PREPARATION

### GENERAL

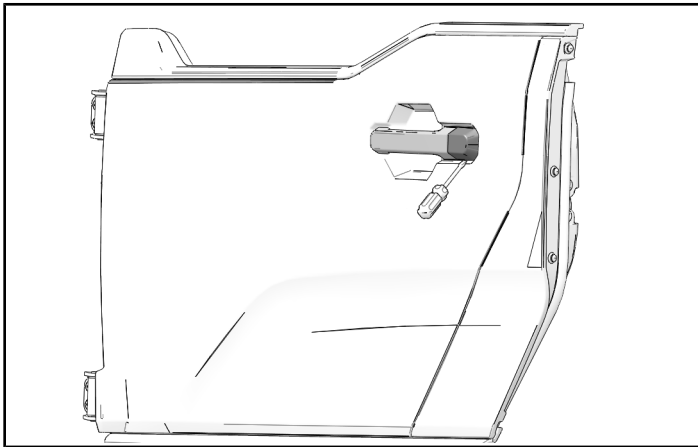
1. Park vehicle on a flat surface.
2. Shift vehicle into PARK.
3. Turn key to OFF position and remove key.

## ACCESSORY INSTALLATION

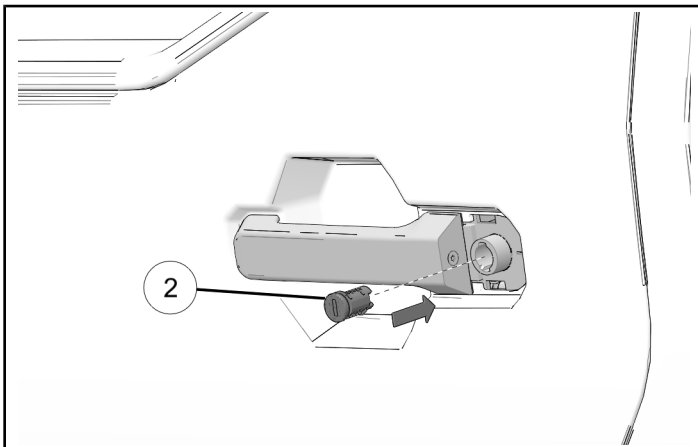
1. Pry cover from the door handle actuator assembly.

**⚠ CAUTION**

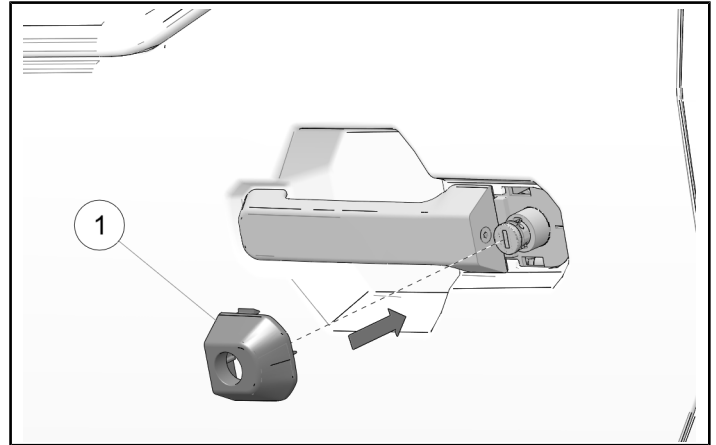
Protect painted/plastic surfaces with protective cloth or masking tape while prying the cover.



2. Install key core ② in the actuator assembly.



3. Install adapter ① over the key core and actuator assembly. Align adapter using the center locating tab and make sure the upper and lower locking tabs are engaged.



## INSTRUCTION FEEDBACK FORM

A feedback form has been created for the installer to provide any comments, questions or concerns about the installation instructions. The form is viewable on mobile devices by scanning the QR code or by clicking [HERE](#) if viewing on a PC.

