

GLACIER PLOW BACK DRAG BAR KIT



P/N 2889747

BEFORE YOU BEGIN

Read these instructions and check to be sure all parts and tools are accounted for. Please retain these installation instructions for future reference and parts ordering information.

APPLICATION

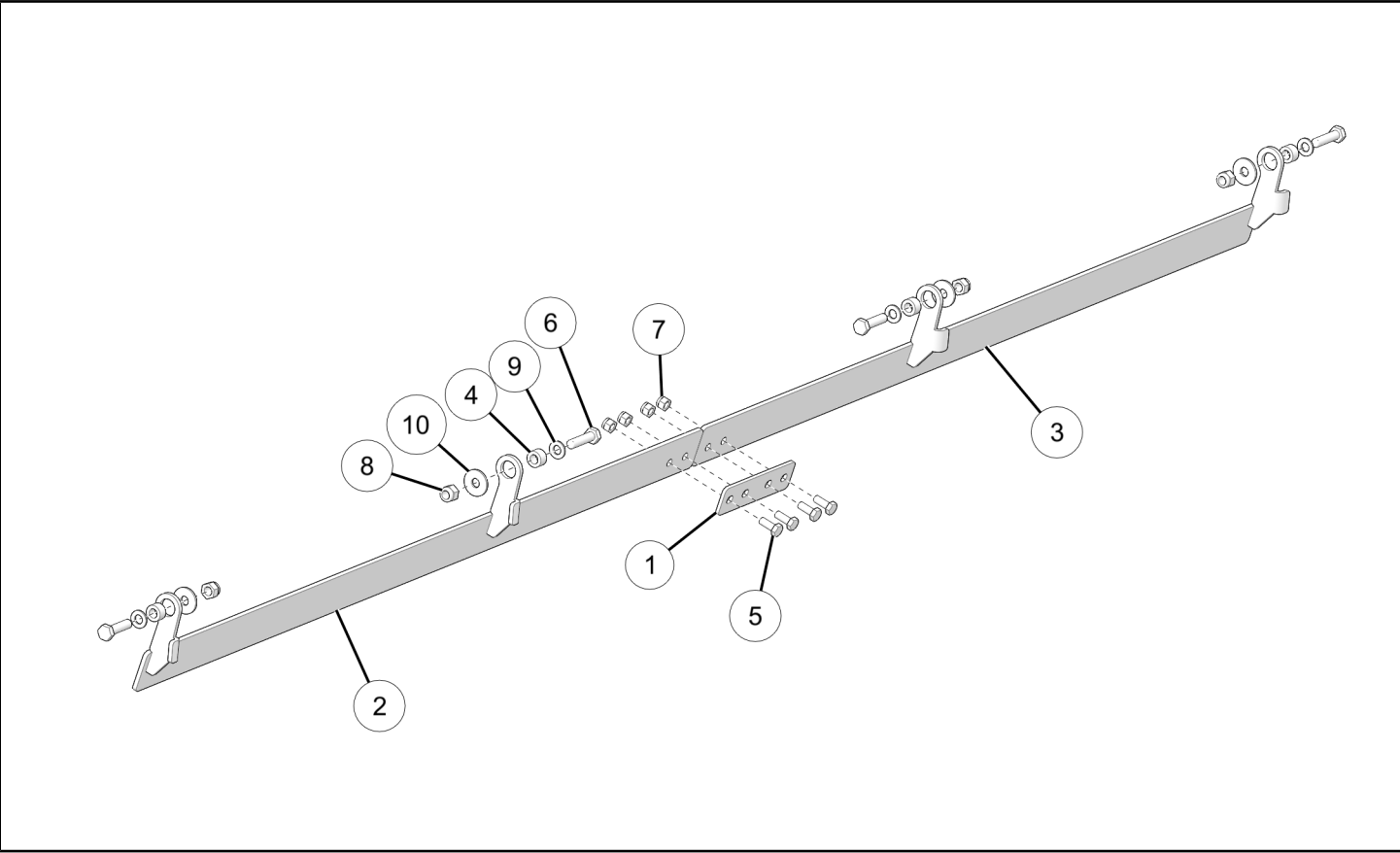
Verify accessory fitment at www.polaris.com.

REQUIRED SOLD SEPARATELY

Only parts for installation of the Glacier Plow Back Drag Bar Kit are included. Prior installation of the following additional kits are also required (sold separately):

- *Glacier 84" Pro HD Plow Blade Kit*, P/N 2889111

KIT CONTENTS



REF	QTY	PART DESCRIPTION	P/N AVAILABLE SEPARATELY	HARDWARE KIT
1	1	Center Plate	n/a	n/a
2	1	Left Drag Bar	n/a	n/a
3	1	Right Drag Bar	n/a	n/a
4	4	Bushing, 10.5 x 18.5 x 11 mm	n/a	2209349

REF	QTY	PART DESCRIPTION	P/N AVAILABLE SEPARATELY	HARDWARE KIT
5	4	Screw, Hex Socket Head, M8 x 1.25 x 20 mm	7516714	2209349
6	4	Screw, Hex Socket Head, M10 x 1.5 x 40 mm	7517993	2209349
7	4	Nut, Hex, M8 x 1.25 mm	7546804	2209349
8	4	Nut, Hex, M10 x 1.5 mm	7547268	2209349
9	4	Washer, 10.5 x 20 x 2.0 mm	7556123	2209349
10	4	Washer, Flat, 10.5 x 30 x 2.5 mm	7556277	2209349

TOOLS REQUIRED

- Socket Set, Hex Bit, Metric
- Torque Wrench
- Wrench Set, Metric

IMPORTANT

Your Glacier Plow Back Drag Bar Kit is exclusively designed for your vehicle. Please read the installation instructions thoroughly before beginning. Installation is easier if the vehicle is clean and free of debris. For your safety, and to ensure a satisfactory installation, perform all installation steps correctly in the sequence shown.

INSTALLATION INSTRUCTIONS

VEHICLE PREPARATION

GENERAL

1. Park vehicle on a flat surface.
2. Shift vehicle into PARK.
3. Turn key to OFF position and remove key.

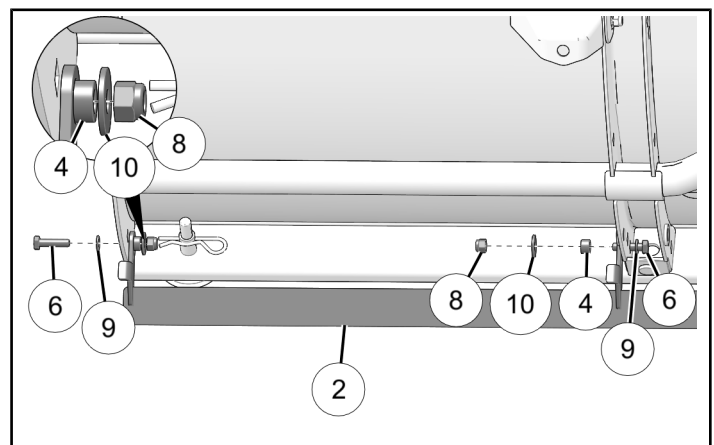
ACCESSORY INSTALLATION

1. Align holes on left drag bar with holes on the plow. Install left drag bar ② with two screws ⑥, two washers ⑨, two washers ⑩, two nuts ⑧, and two bushings ④. Tighten fasteners with fingers. Repeat for right drag bar.

NOTICE

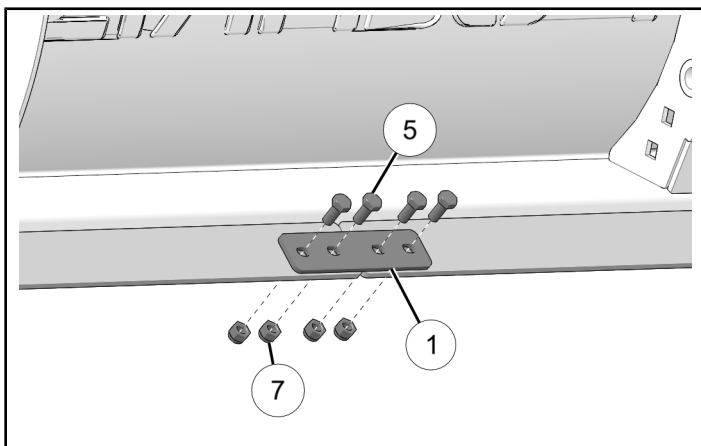
Left drag bar shown; right drag bar similar.

DO NOT torque fasteners at this time.



2. Attach the small plate that connects both drag bars with four screws ⑤ and four nuts ⑦.

DO NOT torque fasteners at this time.



3. Torque all screws to specification.

TORQUE

Connecting Plate Fasteners ⑤:
17.70 ft-lbs (24 N·m)

TORQUE

Drag Bar Fasteners ⑥:
35.40 ft-lbs (48 N·m)