

COVERED FASTENER ASSEMBLY KIT



P/N 2889649

MISSING OR DAMAGED PARTS

Before beginning assembly, inspect the kit and its component(s) to be sure all parts and tools are accounted for and not damaged. If missing parts or parts are damaged, please contact your Selling Dealer for assistance.

If your accessory was purchased online, please contact POLARIS® customer service at **1-800-POLARIS** (US & Canada only).

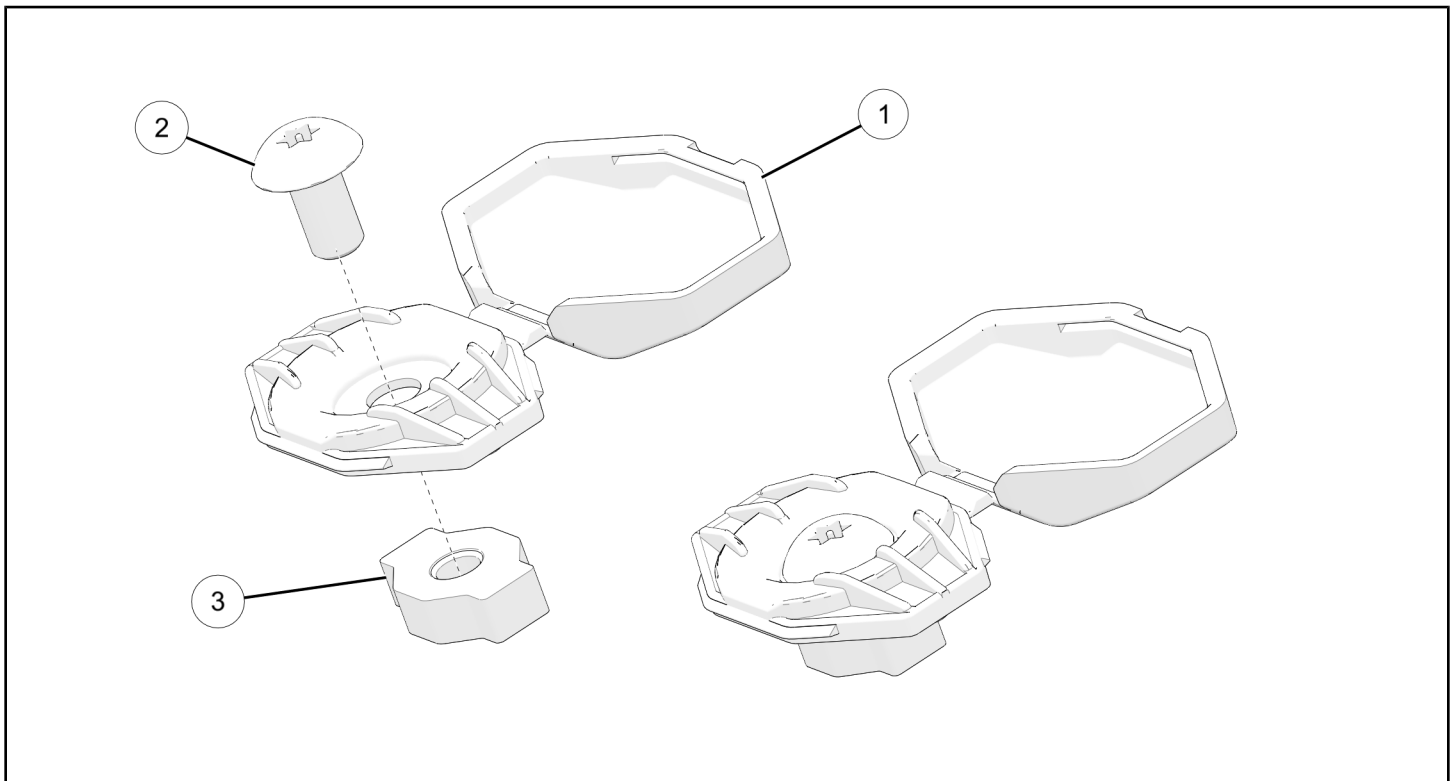
APPLICATION

Verify accessory fitment at www.polaris.com.

IMPORTANT

The Covered Fastener Assembly Kit is used to attach accessories to a platform rack. This kit replaces the 2638786 Lock & Ride MAX® Latching Assemblies that are used for box or floor rail installations.

KIT CONTENTS



REF	QTY	PART DESCRIPTION	P/N AVAILABLE SEPARATELY
1	2	Fastener Cover	5459136
2	2	Torx® Screw M8 x 1.25 x 15 mm	n/a
3	2	T-Nut M8 x 1.25 mm	n/a

TOOLS REQUIRED

- Safety Glasses
- Screwdriver Set, Torx®
- Socket Set, Torx® Bit
- Tamper Proof Torx® Set
- Torque Wrench

IMPORTANT

Your Covered Fastener Assembly Kit is exclusively designed for your vehicle. Please read the installation instructions thoroughly before beginning. Installation is easier if the vehicle is clean and free of debris. For your safety, and to ensure a satisfactory installation, perform all installation steps correctly in the sequence shown.

INSTALLATION INSTRUCTIONS

VEHICLE PREPARATION

GENERAL

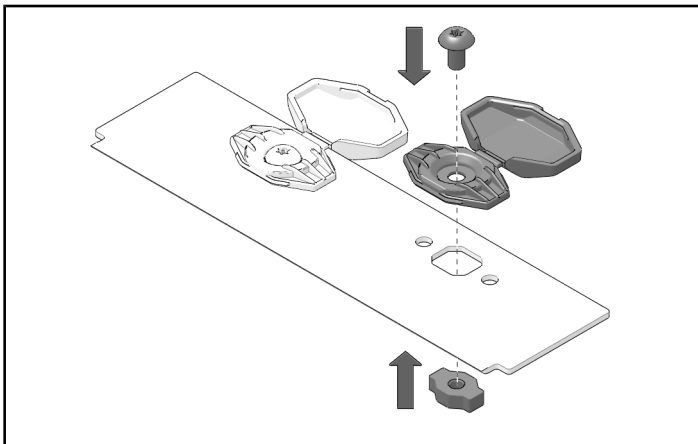
1. Park vehicle on a flat surface.
2. Shift vehicle into PARK.
3. Turn key to OFF position and remove key.

ACCESSORY INSTALLATION

1. Loosely assemble Torx® screw, cover, and T-nut as shown.

NOTICE

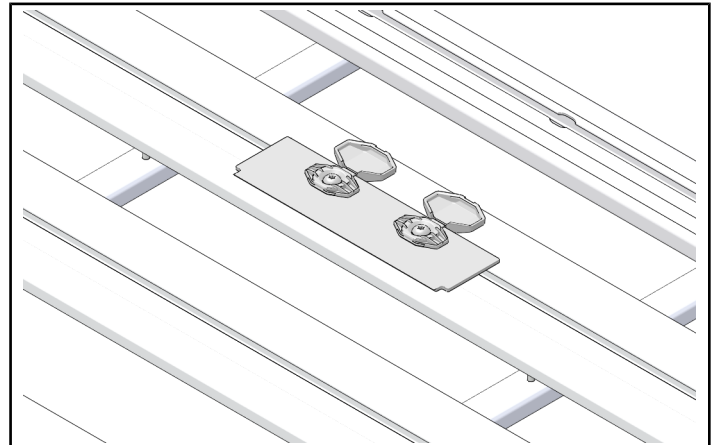
Note orientation of the slot to open the cover. Position assembly so that cover slot is accessible when installation is complete.



2. Slide assembled bracket and fastener assemblies into desired position on rack. When bracket is in desired position, torque screws to specification.

TORQUE

Screws:
19 ft-lbs (26 N·m)



3. Close covers over fasteners.

NOTICE

To open the covers, slide a small, flat-bladed screwdriver into the slot on cover, and pry open.

