

LOCK & RIDE MAX® LATCHING ASSEMBLY KIT



P/N 2889648

MISSING OR DAMAGED PARTS

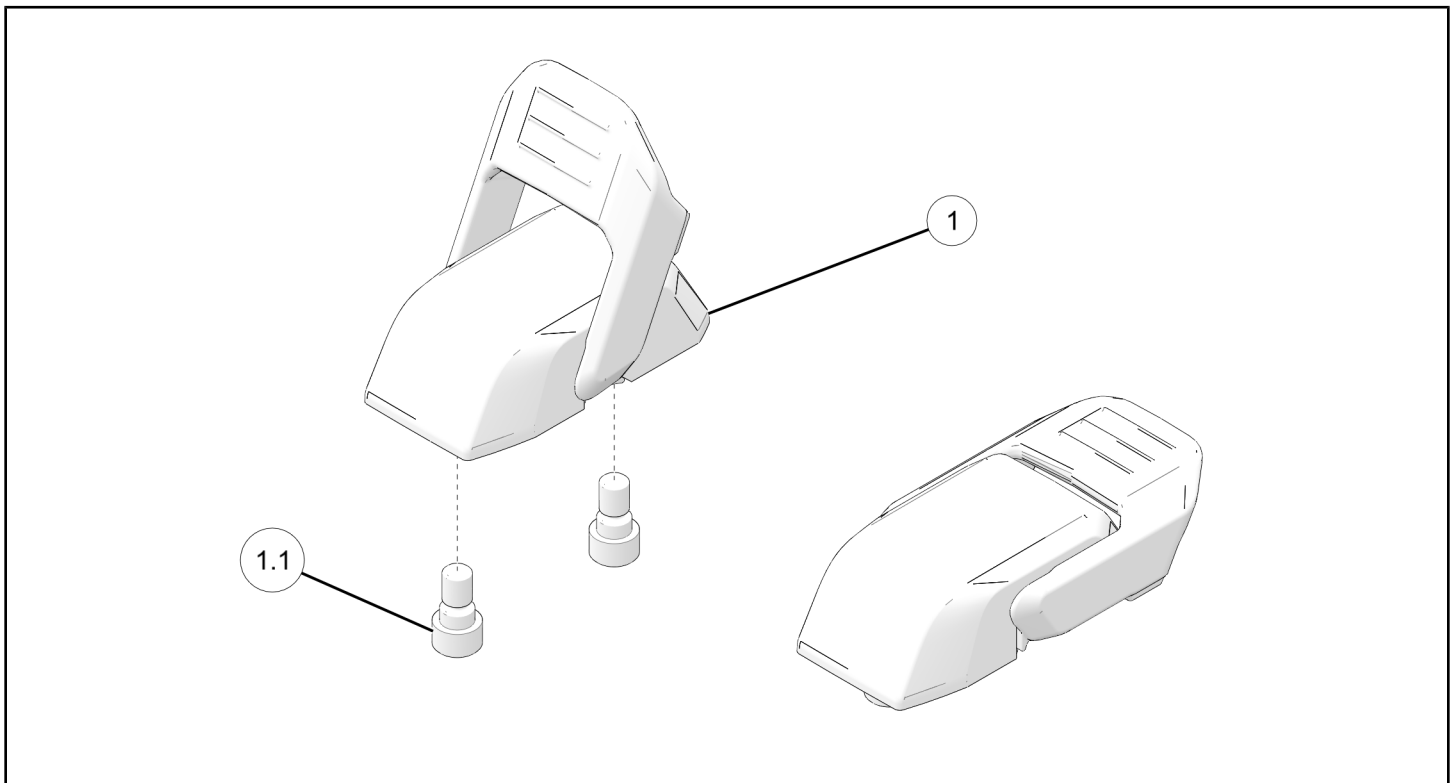
Before beginning assembly, inspect the kit and its component(s) to be sure all parts and tools are accounted for and not damaged. If missing parts or parts are damaged, please contact your Selling Dealer for assistance.

If your accessory was purchased online, please contact POLARIS® customer service at **1-800-POLARIS** (US & Canada only).

APPLICATION

Verify accessory fitment at www.polaris.com.

KIT CONTENTS



| REF | QTY | PART DESCRIPTION | P/N AVAILABLE SEPARATELY |
|-----|-----|-------------------------------------|--------------------------|
| 1 | 2 | Lock & Ride MAX® Latching Assembly | n/a |
| 1.1 | 4 | Screw, Socket Head M6 x 1.0 x 12 mm | n/a |

TOOLS REQUIRED

- Safety Glasses
- Hex Key Set, Metric
- Torque Wrench

IMPORTANT

Your Lock & Ride MAX® Latching Assembly Kit is exclusively designed for your vehicle. Please read the installation instructions thoroughly before beginning. Installation is easier if the vehicle is clean and free of debris. For your safety, and to ensure a satisfactory installation, perform all installation steps correctly in the sequence shown.

INSTALLATION INSTRUCTIONS

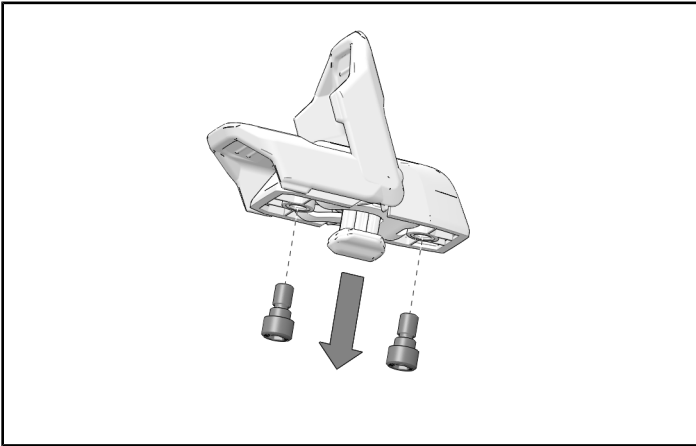
VEHICLE PREPARATION

GENERAL

1. Park vehicle on a flat surface.
2. Shift vehicle into PARK.
3. Turn key to OFF position and remove key.

ACCESSORY INSTALLATION

1. Remove two screws from the bottom of latching assembly.



2. Install latching assembly into the opening of compatible accessory. Tighten screws to specification.

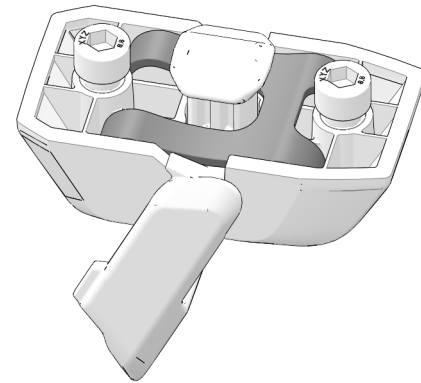
TORQUE

Latching Assembly Screws:
44 in-lbs (5 N·m)

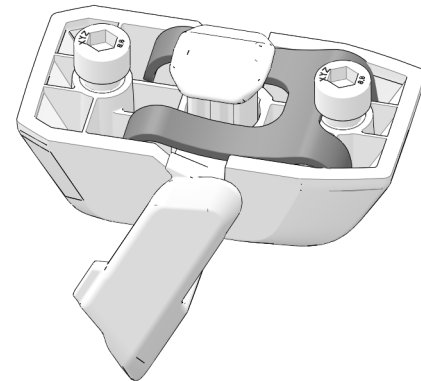
NOTICE

Check spring alignment and orientation while installing latching assembly.

- Correct assembly



- Incorrect assembly

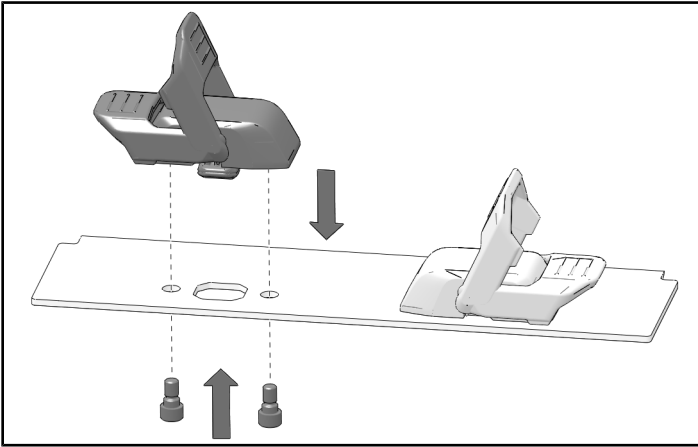


NOTICE

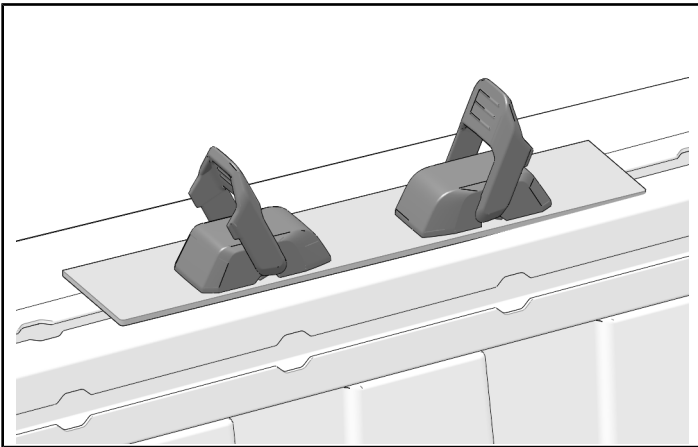
Sample accessory bracket shown.

IMPORTANT

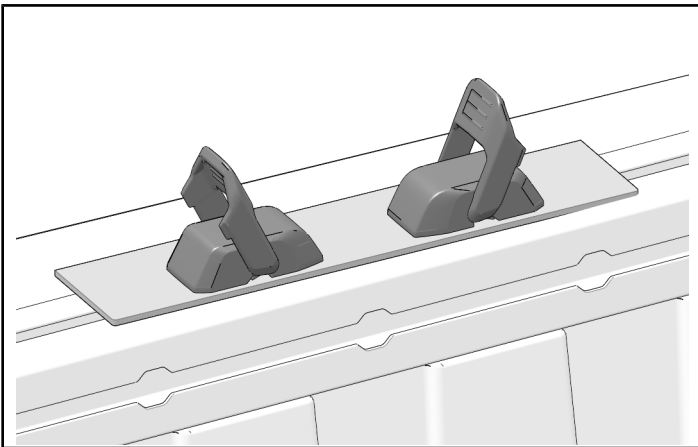
Re-torque latching assembly screws to specification after initial 100 miles (160 km) of use. Re-torque screws at 500 miles (800 km) intervals after initial re-torque.



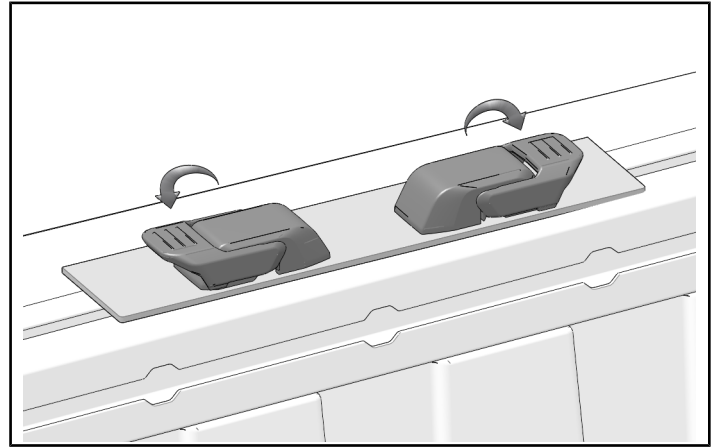
3. Insert retaining feet on latching assemblies through port openings in box rail.



4. Slide the assemblies to desired location. Make sure feet are away from port openings.



5. Press down levers to lock assemblies.



6. Re-torque latching assembly screws to specification after initial 100 miles (160 km) of use. Re-torque screws at 500 miles (800 km) intervals after initial re-torque.

TORQUE

Latching Assembly Screws:
44 in-lbs (5 N·m)