

TRACK MOUNT KIT



P/N 2889196

BEFORE YOU BEGIN

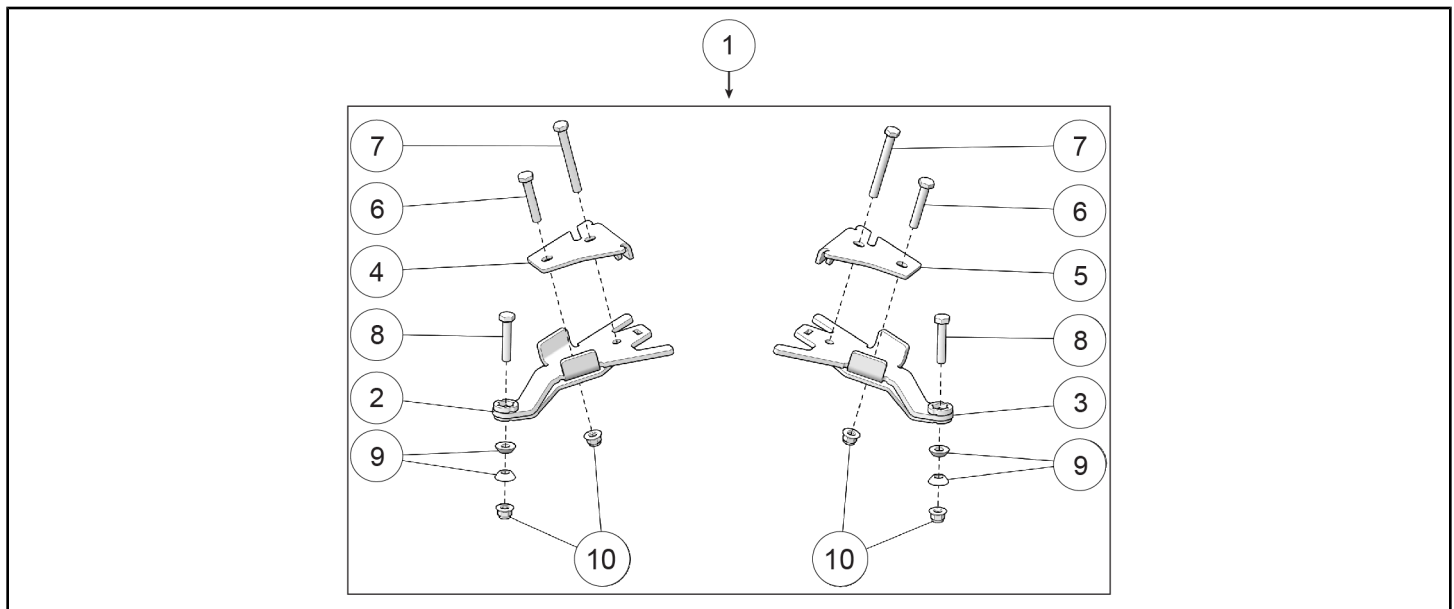
Read these instructions and check to be sure all parts and tools are accounted for. Please retain these installation instructions for future reference and parts ordering information.

APPLICATION

Verify accessory fitment at www.polaris.com.

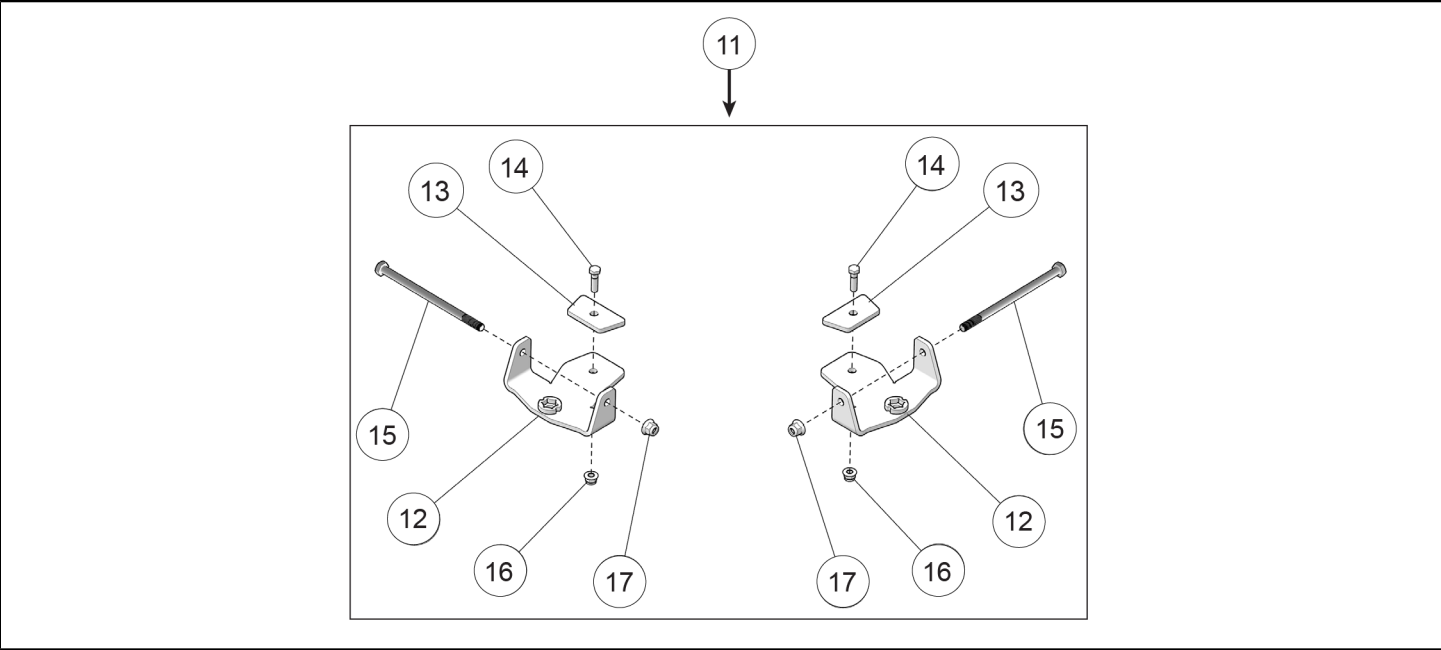
KIT CONTENTS

FRONT ANCHOR BRACKET P/N 2209473



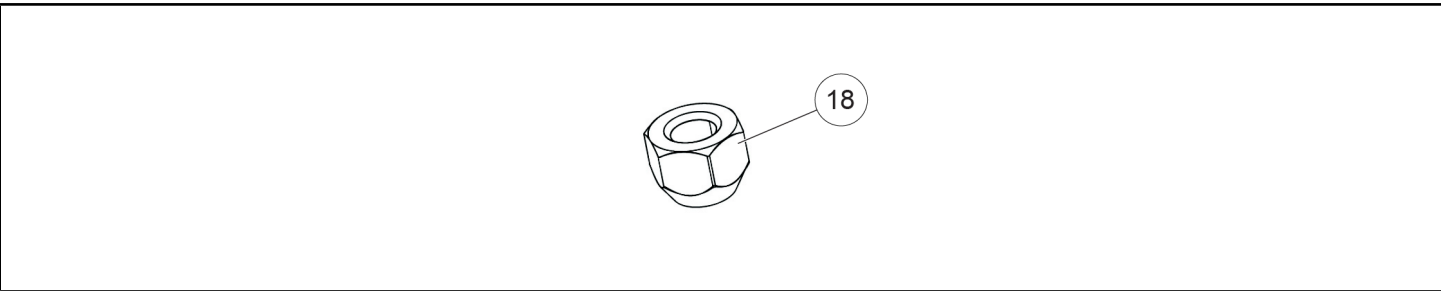
REF	QTY	PART DESCRIPTION	P/N AVAILABLE SEPARATELY
1	1	Front Anchor Bracket	2209473
2	1	Front Left Anchor Bracket	N/A
3	1	Front Right Anchor Bracket	N/A
4	1	Front Left Bracket Cover	N/A
5	1	Front Right Bracket Cover	N/A
6	2	Hex Bolt, M10 — 1.5 X 60 mm	N/A
7	2	Hex Bolt, M10 — 1.5 X 90 mm	N/A
8	2	Hex Bolt, M10 — 1.5 X 55 mm	N/A
9	4	Taper Sleeve	N/A
10	4	Nylon Nut, M10 — 1.5 mm	N/A

REAR ANCHOR BRACKET: 2205396



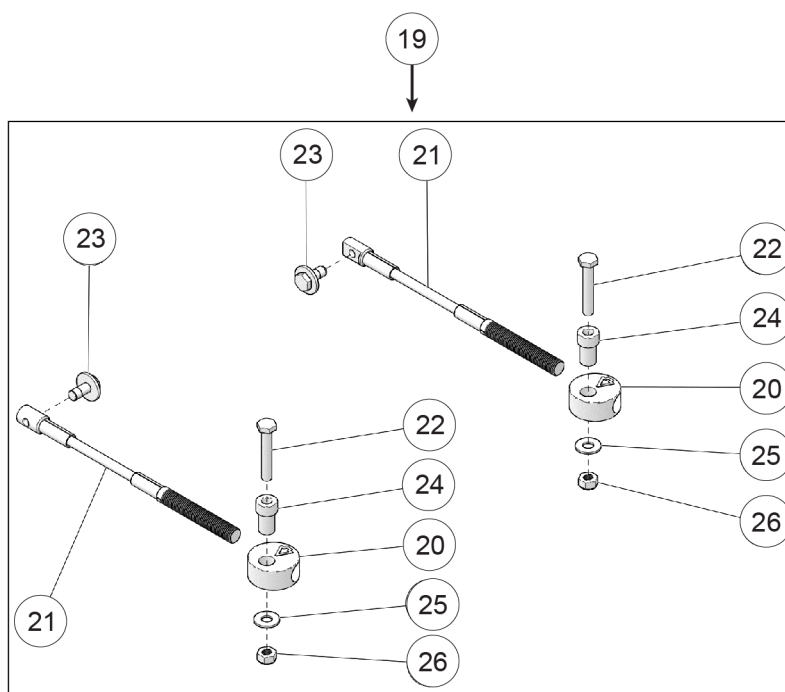
REF	QTY	PART DESCRIPTION	P/N AVAILABLE SEPARATELY
11	1	Rear Bracket Kit	2205396
12	2	Rear Anchor Bracket	N/A
13	2	Rear Bracket Cover	N/A
14	2	Hex Bolt, M8 — 1.25 X 30 mm	N/A
15	2	Hex Bolt, M10 — 1.5 X 180 mm	N/A
16	2	Nylon Nut, M8 — 1.25 mm	N/A
17	2	Nylon Nut, M10 — 1.5 mm	N/A

WHEEL LUG NUT: 2205457



REF	QTY	PART DESCRIPTION	P/N AVAILABLE SEPARATELY
18	16	Wheel Lug Nut, 3/8 — 24 X 15	2205457

STEERING LIMITER ASSEMBLY: 2205456



REF	QTY	PART DESCRIPTION	P/N AVAILABLE SEPARATELY
19	1	Steering Limiter Cable Assembly	2205456
20	2	Steering Limiter Mounting Disk	N/A
21	2	Steering Limiter Cable	N/A
22	2	Hex Bolt, M10 — 1.5 X 60 mm	N/A
23	2	Hex Bolt, M10 — 1.5 X 25 mm	N/A
24	2	Step Spacer	N/A
25	2	Washer, 7/16 X 1.0 X 0.072	N/A
26	2	Nylon Nut, M10 — 1.5 mm	N/A

TOOLS REQUIRED

- Socket Set, Metric
- Socket Set, SAE
- Socket Set, Torx® Bit
- Torque Wrench
- Wrench Set, Metric
- Wrench Set, SAE
- Vehicle Lift/Support Equipment

IMPORTANT

Your Track Mount Kit is exclusively designed for your vehicle. Please read the installation instructions thoroughly before beginning. Installation is easier if the vehicle is clean and free of debris. For your safety, and to ensure a satisfactory installation, perform all installation steps correctly in the sequence shown.

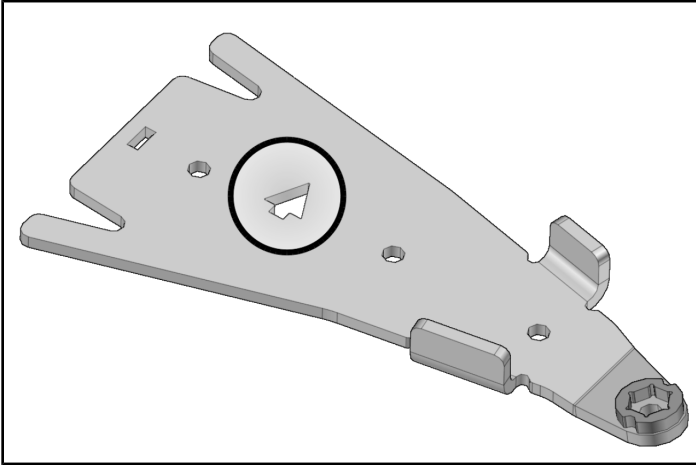
INSTALLATION INSTRUCTIONS

GENERAL

⚠ CAUTION

Before beginning installation, make sure you received all the components included in the parts list of the preceding pages.

1. For installation purposes, directional arrows have been cut out of the main components in the anchor bracket kits. These arrows indicate the front of the vehicle relative to the component.



VEHICLE PREPARATION

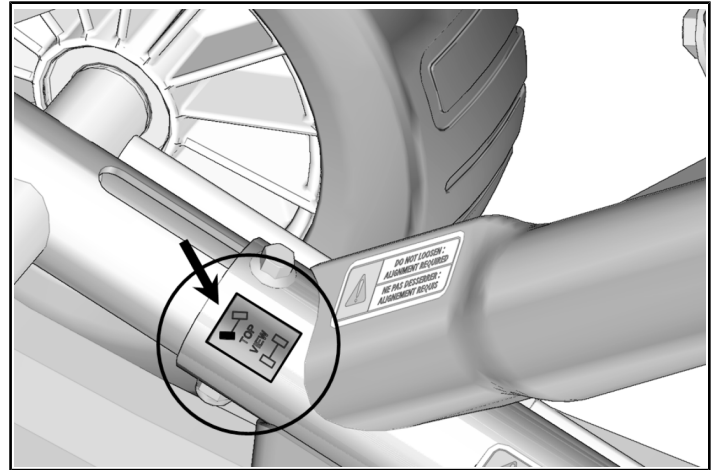
GENERAL

⚠ WARNING

Never place body parts under the vehicle unless it is securely placed on appropriate stands. Severe injuries could occur if the vehicle collapses or moves. Do not use a lifting device as a secure stand.

1. Park vehicle on a flat surface.
2. Shift vehicle into PARK.
3. Turn key to OFF position and remove key.

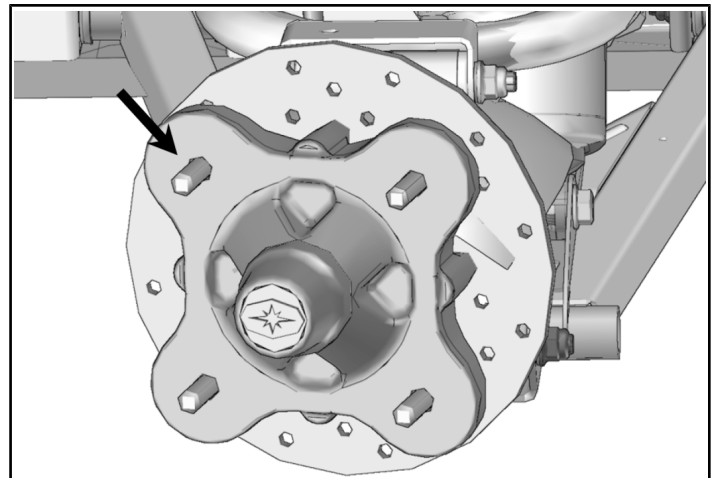
4. Identify and position each unit of the track system near the position indicated on the sticker affixed on the frame.



ACCESSORY INSTALLATION

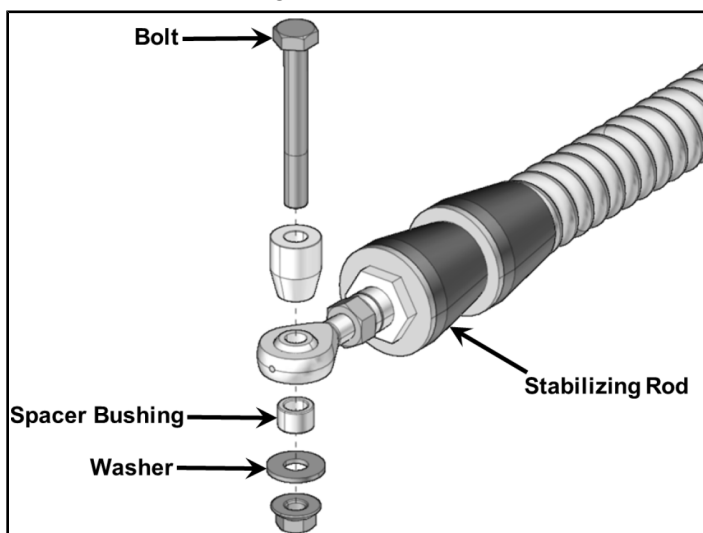
REAR TRACK SYSTEMS

1. Using a lifting device, raise the rear of the vehicle and install appropriate stands. Ensure that the vehicle is immobilized and safe to work on.
2. Remove the rear wheels to begin Track Mount installation. Make sure that wheel studs and wheel hubs are free of dirt.



3. If applicable, remove the CV joint protectors from the A-arms.

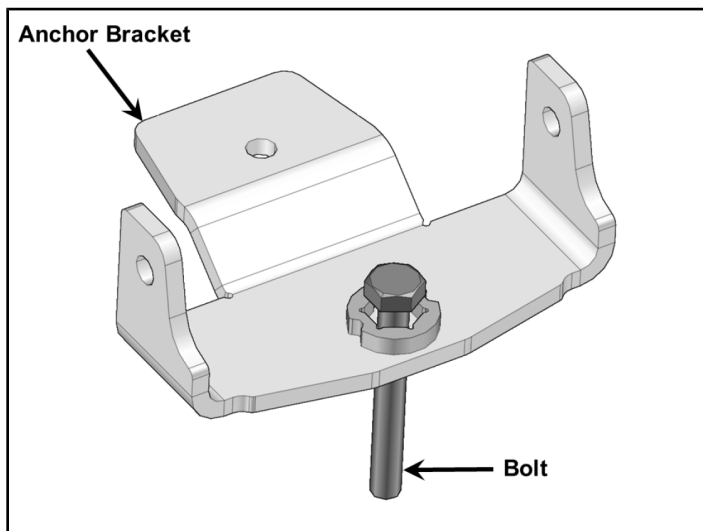
4. Remove bolt, washer, and spacer bushings from the rear stabilizing rod end.



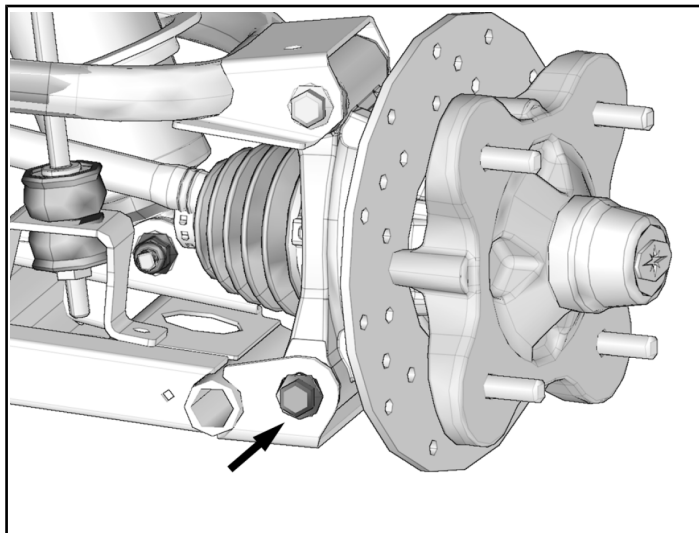
5. Insert the bolt in rear anchor bracket.

NOTICE

It is not possible to insert this bolt once the bracket is attached to the suspension arm.

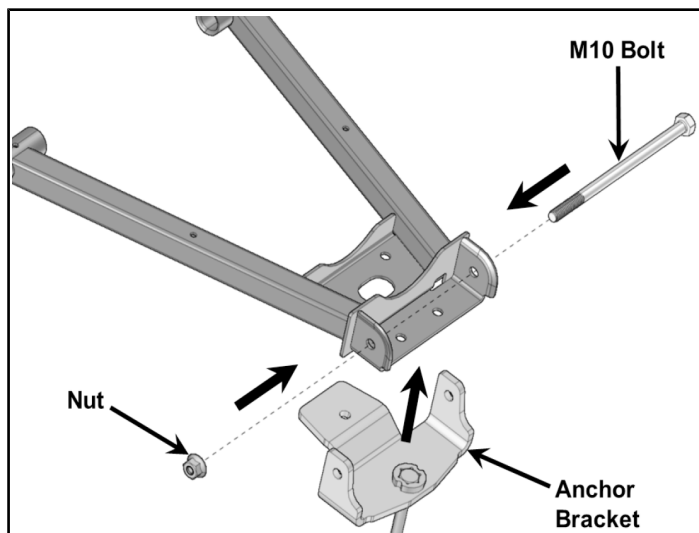


6. Remove bolt linking the lower suspension arm and the wheel hub.



7. Install the anchor bracket under the suspension arm. Insert the new M10 X 180 mm bolt in the anchor bracket, through the lower suspension arm and the wheel hub. Thread the M10 nut on the bolt, but do not tighten it yet.

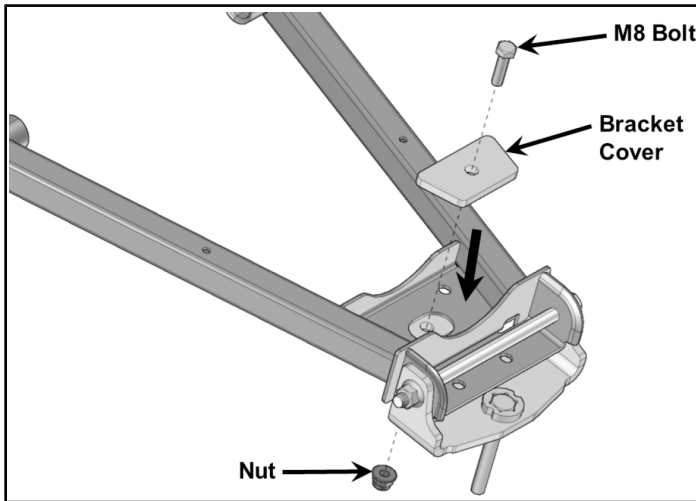
DO NOT torque fasteners at this time.



8. Position the bracket cover over oval hole in lower a-arm and secure it in place using an M8 X 30 mm bolt and nut. Torque the M8 bolt and M10 bolt to specification.

TORQUE
M8 Bolt 18 ft-lbs (25 N·m)

TORQUE
M10 Bolt 37 ft-lbs (50 N·m)



9. Secure the track assembly to the rear hub using the nuts provided in this mount kit.

TORQUE
Lug Nuts 35 ft-lbs (47 N·m)

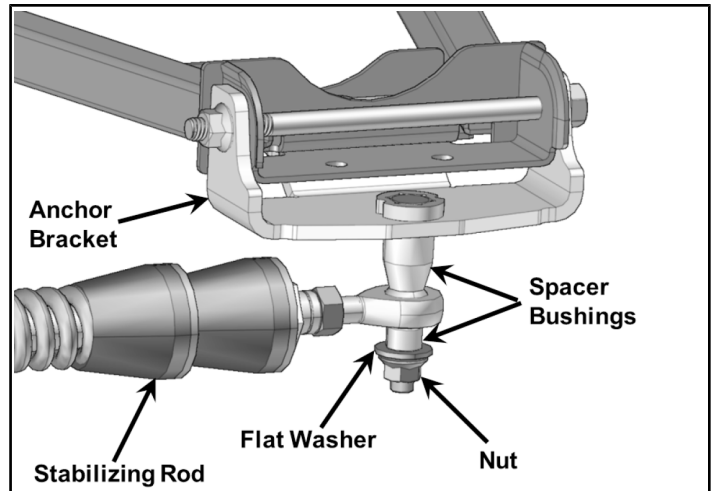
NOTICE
If needed, take rubber protector off the hub.

NOTICE
Ensure that the cotter pin of the axle nut does not interfere with the undercarriage hub.

10. Attach the stabilizing rod to the anchor bracket, using the long spacer bushing, the short spacer bushing, the flat washer and nut. Torque to specification.

TORQUE
Nut 52 ft-lbs (70 N·m)

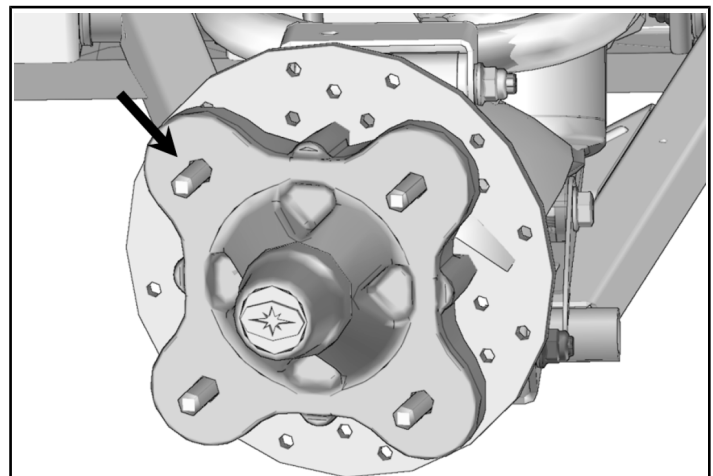
NOTICE
Ensure that parts are assembled in the correct order.



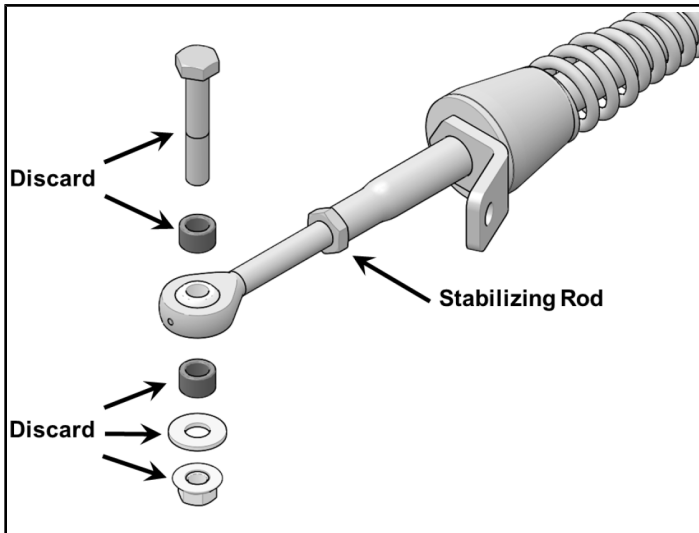
11. Inspect the rear track systems and ensure that all mounting bolts were correctly tightened during installation. Lower the vehicle to the ground and proceed to install the front track systems.

FRONT TRACK SYSTEMS

1. Using a lifting devise, raise the front of the vehicle and install appropriate stands. Ensure that the vehicle is immobilized and safe to work on.
2. Remove front wheels to begin Track Mount installation. Make sure that wheel studs and wheel hubs are free of dirt.



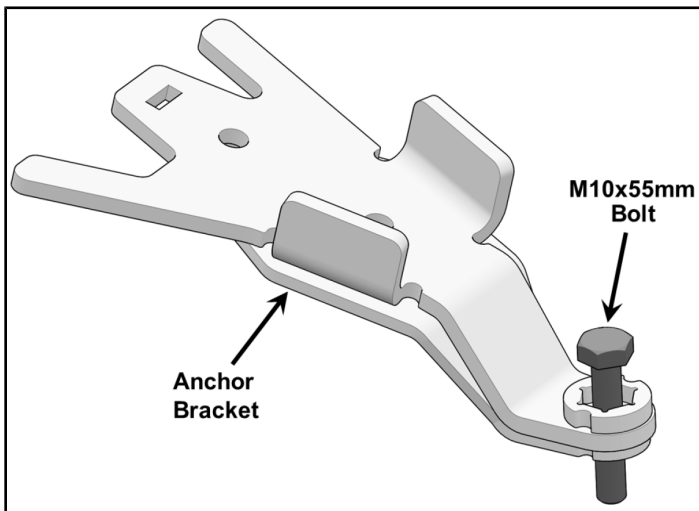
3. If applicable, remove the CV joint protectors from the A-arms.
4. Remove and discard the bolt, bushings, washer, and nut that are assembled on the front stabilizing rod end.



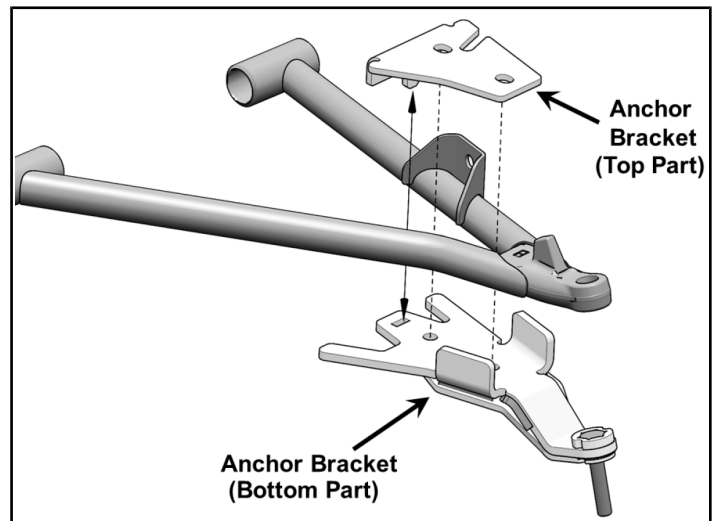
5. Insert the M10 X 55 mm bolt ⑧ in the front anchor bracket.

NOTICE

It is not possible to insert this bolt once the bracket is attached to the suspension arm.



6. Position the bottom part of the anchor bracket underneath the lower suspension arm. Position the bracket cover over the suspension arm so the tab slips in the slot in the bottom part.



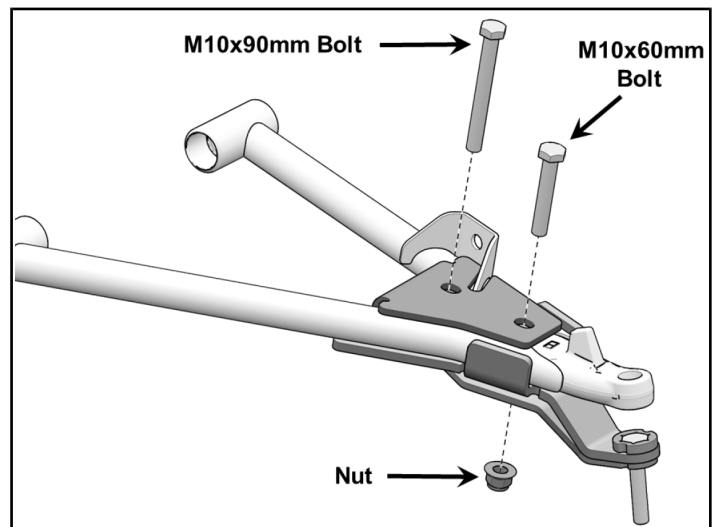
7. Insert the M10 X 60 mm and M10 X 90 mm bolts through the top and secure the two parts together using the nut provided on the 60 mm long bolt. Torque to specification.

TORQUE

Nut
37 ft-lbs (50 N·m)

NOTICE

Install M10 X 90 mm long bolt at the back of the bracket and 60 mm long bolt at the front.



- Secure the track assembly to the front hub using the nuts provided in the mount kit. Torque to specification.

TORQUE

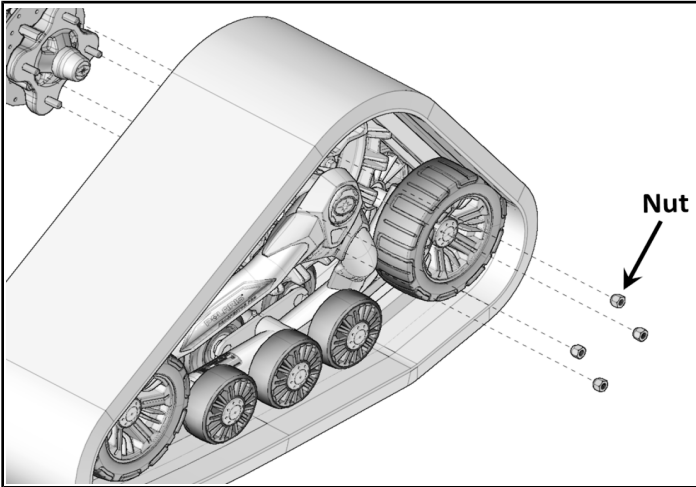
Lug Nuts
35 ft-lbs (47 N·m)

NOTICE

If needed, take the rubber protector off of hub.

NOTICE

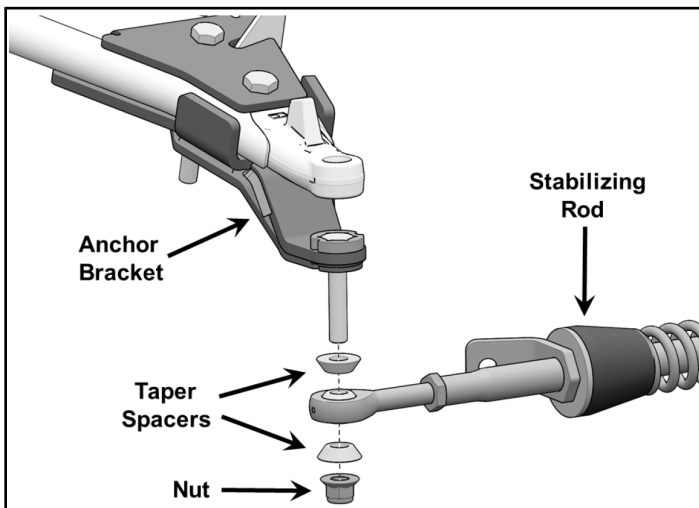
Ensure that the cotter pin of the axle nut does not interfere with the undercarriage hub.



- Attach the stabilizing rod to the anchor bracket, using the two Taper Spacers ⑨ and nut ⑩. Torque to specification.

TORQUE

Nut ⑩:
52 ft-lbs (70 N·m)

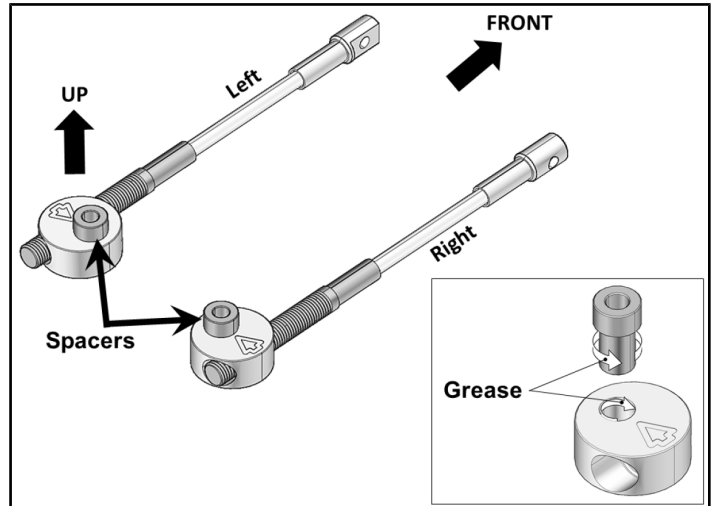


STEERING LIMITER INSTALLATION

- Insert step spacers in the steering limiter assemblies to get left and right steering limiters.

NOTICE

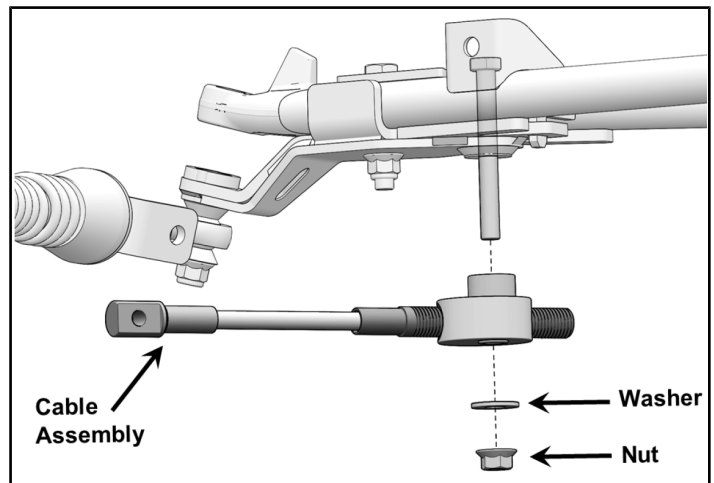
Apply grease to step spacers and mounting disks before assembling the components.



- Slip steering limiter cable assembly over M10 X 90 mm bolt already inserted through anchor bracket, and secure with washer and nut. Torque to specification.

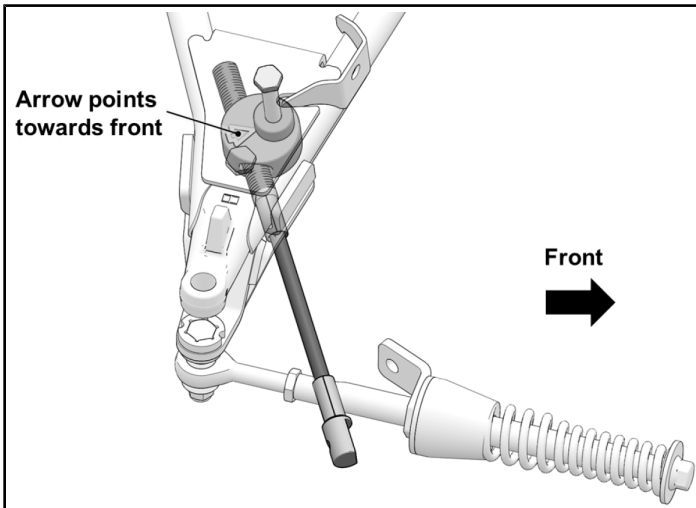
TORQUE

Nut:
37 ft-lbs (50 N·m)



NOTICE

Make sure the arrow on top of the aluminum mounting disk points toward the front of the vehicle.

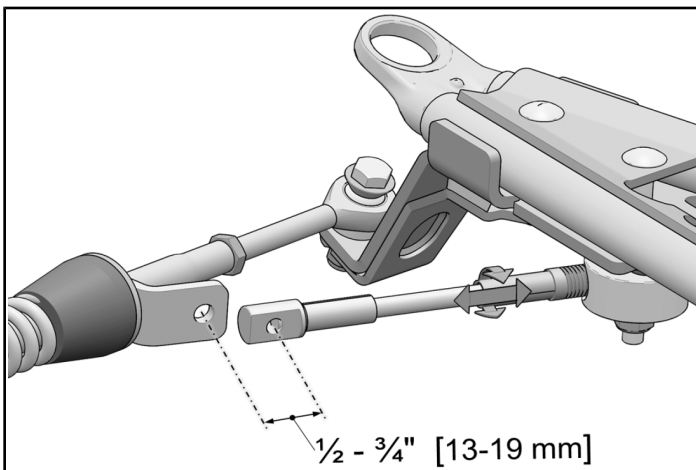


STEERING LIMITER ADJUSTMENT

⚠ CAUTION

The angle of attack must absolutely be set before beginning steering limiter adjustment on front track systems. Refer to the User Manual for angle of attack settings.

1. Turn the vehicle's steering wheel to its maximum point of travel on the left hand side. While maintaining pressure on the steering wheel, turn threaded rod to adjust length of cable so that the center of the hole at the end of the cable is located $\frac{3}{4}$ in (19 mm) short of the center of the support plate mounting hole.



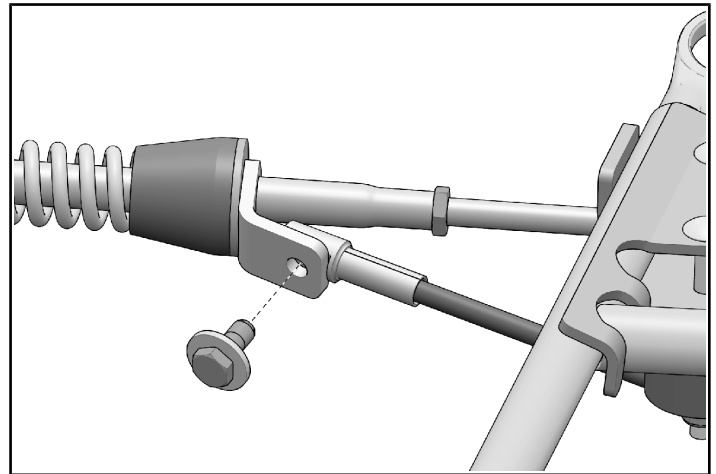
2. Reverse steering wheel a little to be able to bolt support plate and cable together. Torque to specification.

TORQUE

Bolt:
24 ft-lbs (35 N·m)

NOTICE

Repeat steps to adjust right side.



COMPLETION:

1. Verify the suspension settings. If the shock absorbers are adjustable, they should be adjusted to the firmest level in order to allow for maximum clearance between the system and the fender of the vehicle.
2. Verify for possible contact between the undercarriage and the lower fender. If there is contact, the fender should be modified (cut) to avoid damage to the vehicle's components and premature wear on the rubber track.
3. Lower the vehicle to the ground.

ADJUSTMENTS:

⚠ CAUTION

The track systems are designed to provide the best performance in terms of traction and floatability. Adjustments such as alignment, track tension, and angle of attack are necessary and mandatory for optimal performance of the systems. For more information on these adjustments, refer to the User Manual provided with the installation kit specific to the vehicle.

INSTRUCTION FEEDBACK FORM

A feedback form has been created for the installer to provide any comments, questions or concerns about the installation instructions. The form is viewable on mobile devices by scanning the QR code or by clicking [HERE](#) if viewing on a PC.

