

# LOCK AND RIDE® REAR PANEL KIT



P/N 2884412 2889344

## MISSING OR DAMAGED PARTS

Before beginning assembly, inspect the kit and its component(s) to be sure all parts and tools are accounted for and not damaged. If missing parts or parts are damaged, please contact your Selling Dealer for assistance.

If your accessory was purchased online, please contact POLARIS® customer service at **1-800-POLARIS** (US & Canada only).

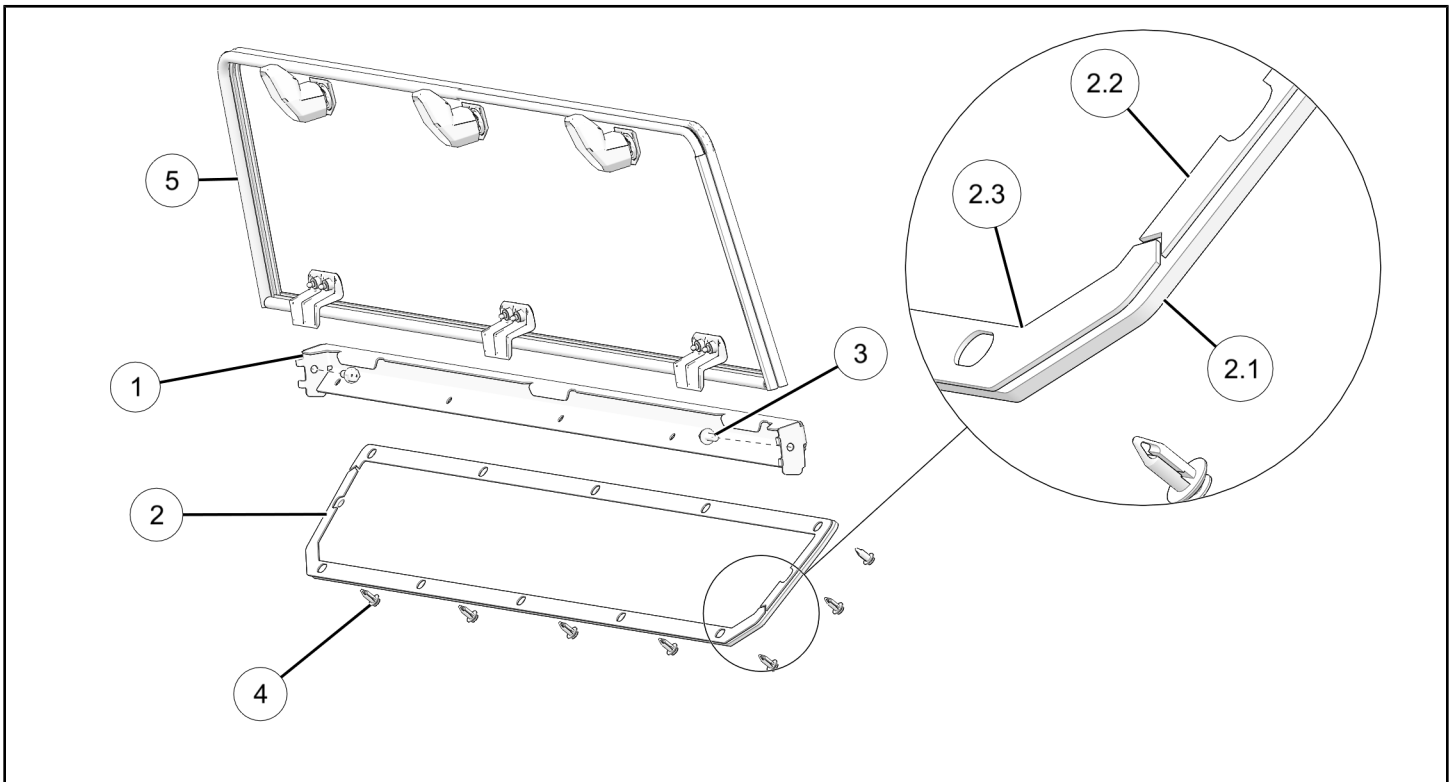
## APPLICATION

Verify accessory fitment at [www.polaris.com](http://www.polaris.com).

P/N 2884412 & 2889344 Lock and Ride® Rear Panel Kit only fit Xpedition® XP models.

## KIT CONTENTS

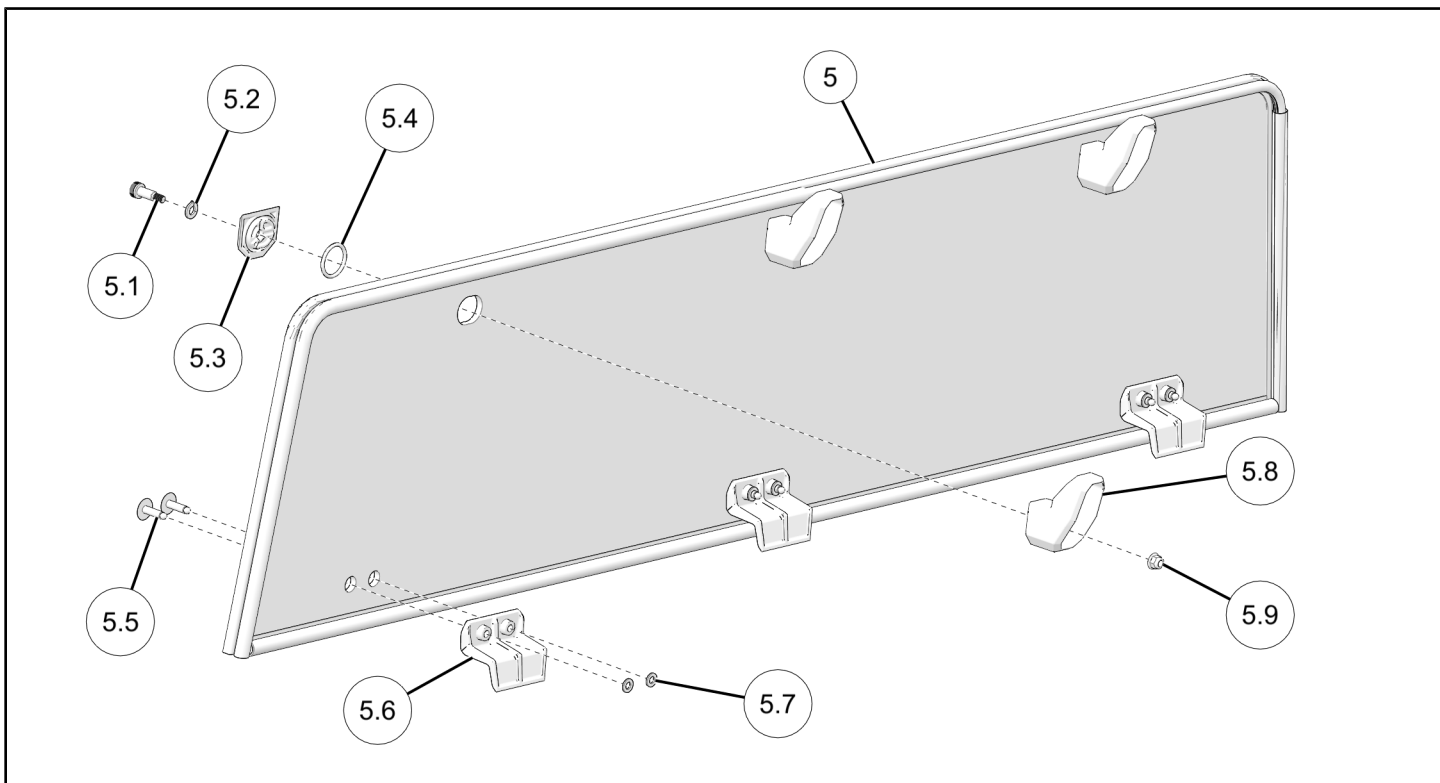
### LOCK AND RIDE® REAR PANEL KIT P/N 2889344; 2884412



| REF | QTY | PART DESCRIPTION                        | P/N AVAILABLE SEPARATELY | AVAILABLE SERVICE KIT |
|-----|-----|-----------------------------------------|--------------------------|-----------------------|
| 1   | 1   | Rear Cross Brace                        | n/a                      | n/a                   |
| 2   | 1   | Rear Poly Window                        | 2637904                  | n/a                   |
| 2.1 | 1   | – Window, Rear Poly                     | 5459397                  | n/a                   |
| 2.2 | 1   | – Rear Panel Foam, Upper                | 5526480                  | n/a                   |
| 2.3 | 1   | – Rear Panel Foam, Lower                | 5526481                  | n/a                   |
| 3   | 2   | Hex Flange Head Screw M8 x 1.25 x 20 mm | 7521332-20               | 2209651               |

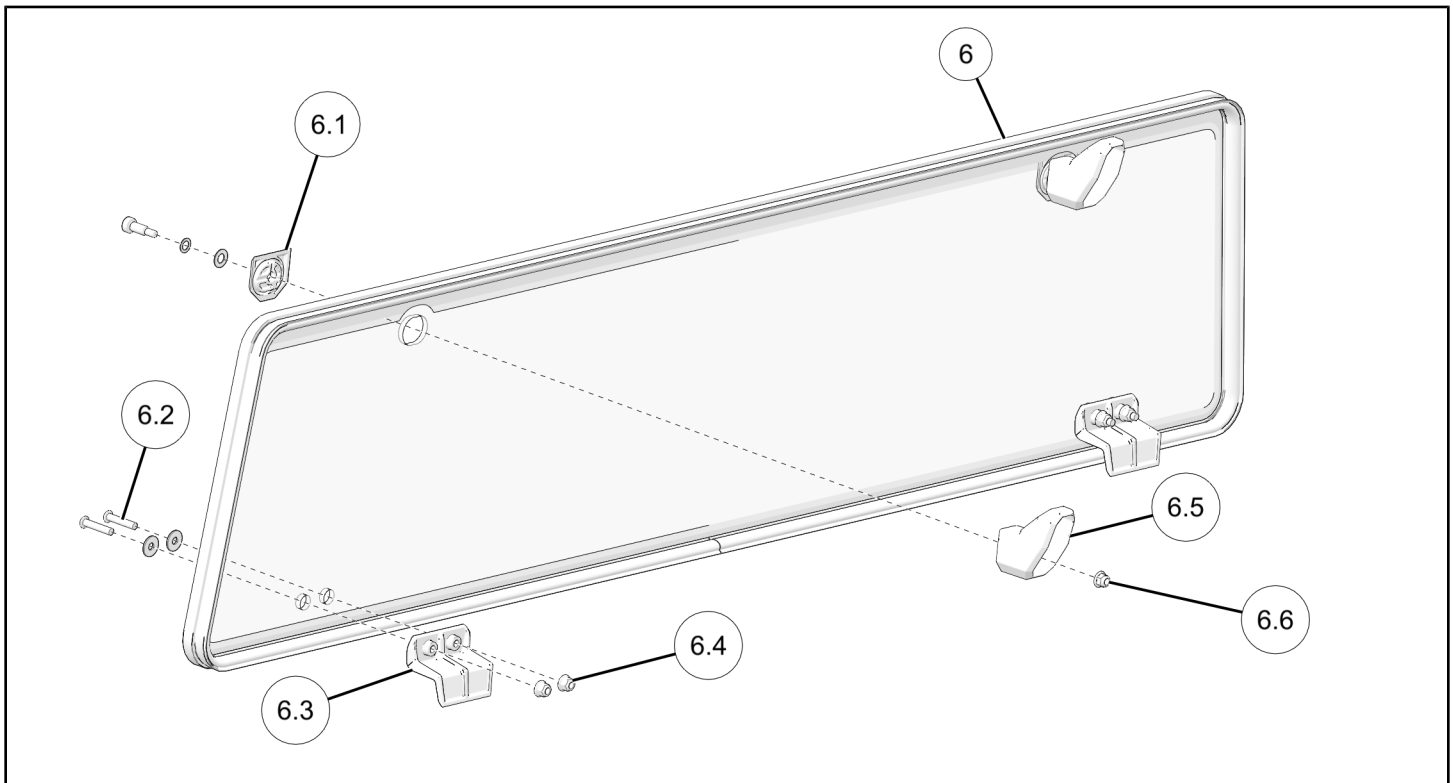
| REF | QTY | PART DESCRIPTION                                     | P/N AVAILABLE SEPARATELY | AVAILABLE SERVICE KIT |
|-----|-----|------------------------------------------------------|--------------------------|-----------------------|
| 4   | 12  | Rivet, Plastic Push Pin                              | 7661855                  | 2209651               |
| 5   | 1   | Window Assembly, Rear Poly (shown) (P/N 2889344)     | n/a                      | n/a                   |
| 6   | 1   | Window Assembly, Rear Glass (not shown) (P/N2884412) | n/a                      | n/a                   |

## 2209451 HARDWARE SERVICE KIT



| REF | QTY | PART DESCRIPTION                   | P/N AVAILABLE SEPARATELY | AVAILABLE SERVICE KIT |
|-----|-----|------------------------------------|--------------------------|-----------------------|
| 5   | –   | Window Assembly, Rear Poly         | n/a                      | n/a                   |
| 5.1 | 1   | – Screw, Shoulder M6 x 1.0 mm      | n/a                      | 2209451               |
| 5.2 | 1   | – Lockwasher 5/16 in               | n/a                      | 2209451               |
| 5.3 | 1   | – Base                             | n/a                      | 2209451               |
| 5.4 | 1   | – O-Ring 31 mm OD                  | n/a                      | 2209451               |
| 5.5 | 2   | – Rivet, Steel                     | n/a                      | 2209451               |
| 5.6 | 1   | – Bracket, Mount                   | 5439918                  | 2209451               |
| 5.7 | 2   | – Flat Washer 6 mm                 | n/a                      | 2209451               |
| 5.8 | 1   | – Lock and Ride® Handle            | 5452531                  | 2209451               |
| 5.9 | 1   | – Nut, Hex Flange Head, Nyloc 6 mm | n/a                      | 2209451               |

## 2209675 HARDWARE SERVICE KIT



| REF | QTY | PART DESCRIPTION                            | P/N AVAILABLE SEPARATELY | AVAILABLE SERVICE KIT |
|-----|-----|---------------------------------------------|--------------------------|-----------------------|
| 6   | –   | Window Assembly, Rear Glass                 | n/a                      | n/a                   |
| 6.1 | 1   | – Base                                      | 5451908                  | 2209675               |
| 6.2 | 2   | – Screw, Torx® Button Head M6 x 1.0 x 30 mm | 7519745                  | 2209675               |
| 6.3 | 1   | – Bracket, Mount                            | 5439918                  | 2209675               |
| 6.4 | 2   | – Nut, Hex Flange Head, Nyloc 6 mm          | 7547475                  | 2209675               |
| 6.5 | 1   | – Lock and Ride® Handle                     | 5452442                  | 2209675               |
| 6.6 | 1   | – Nut, Hex Flange Head, Nyloc M6 x 1.0 mm   | 7547453                  | 2209675               |

### TOOLS REQUIRED

- Safety Glasses
- Push Dart (Panel Clip) Tool
- Socket Set, Metric
- Torque Wrench

### IMPORTANT

Your Lock and Ride® Rear Panel Kit is exclusively designed for your vehicle. Please read the installation instructions thoroughly before beginning. Installation is easier if the vehicle is clean and free of debris. For your safety, and to ensure a satisfactory installation, perform all installation steps correctly in the sequence shown.

### INSTALLATION INSTRUCTIONS

#### VEHICLE PREPARATION

##### GENERAL

1. Park vehicle on a flat surface.
2. Shift vehicle into PARK.

3. Turn key to OFF position and remove key.

## ACCESSORY INSTALLATION

### REAR CLOSE-OFF INSTALLATION

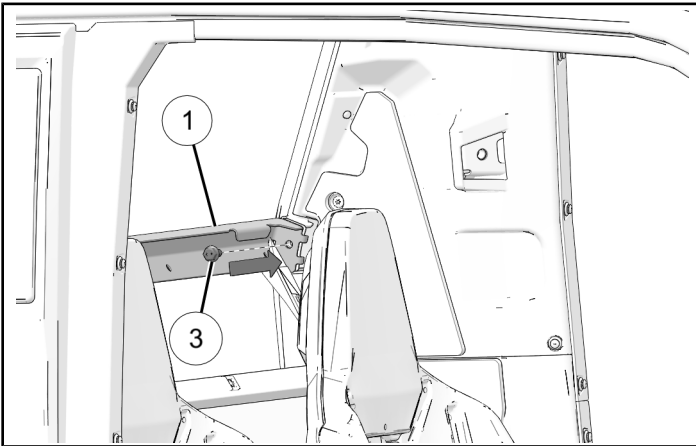
1. Install cross brace ① at rear of cab. Note orientation of cross brace. Install two screws ③. Tighten screws to specification.

#### TORQUE

Screws ③:  
**15 ft-lbs (20 N·m)**

#### NOTICE

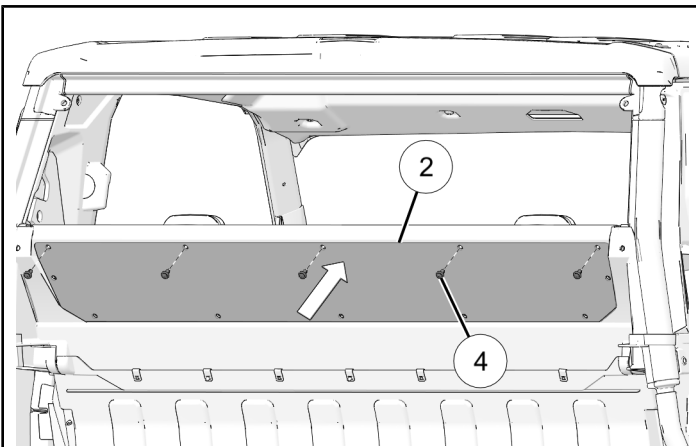
Left side shown; right side similar.



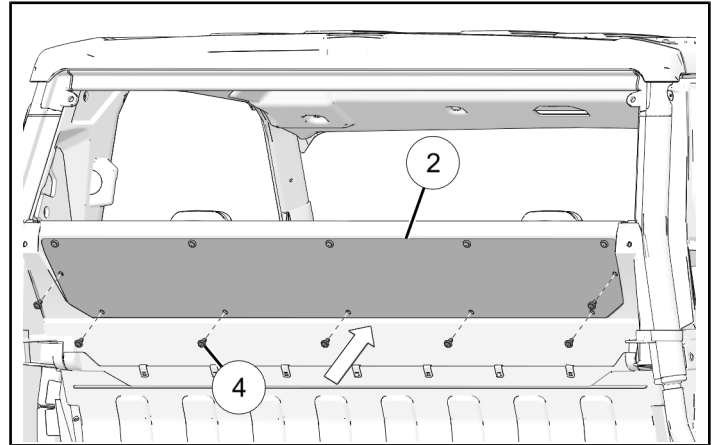
2. Install poly window ② to cross brace with five push pin rivets ④.

#### NOTICE

Check alignment of all panel mounting holes before installing push rivets. Foam on panel should face toward inside.



3. Install seven push-pin rivets ④ at sides and bottom of poly window.

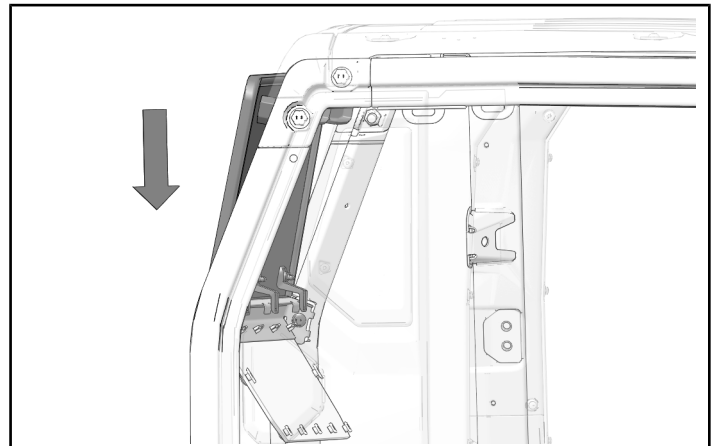


### LOCK AND RIDE® REAR WINDOW INSTALLATION

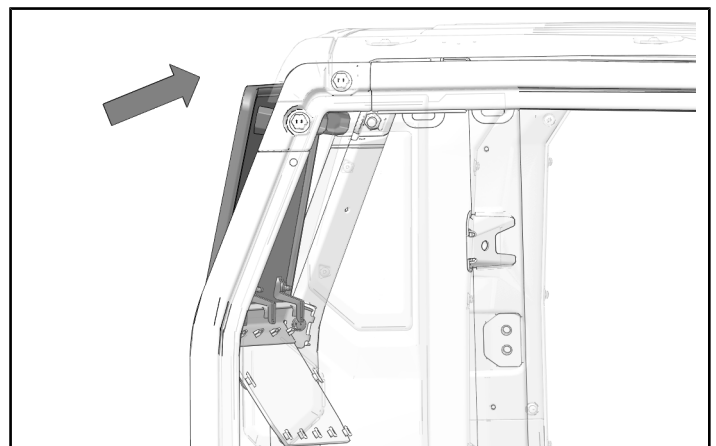
#### NOTICE

Poly window shown; glass window similar.

1. Lower window into position. Lower mounting brackets seat over the crossbar.



2. Tilt the top of the window into the window frame.



3. Turn the handles upward to lock the window into place.

