

KOLPIN STRONGHOLD® RAIL MOUNT KIT



P/N 2889526

MISSING OR DAMAGED PARTS

Before beginning assembly, inspect the kit and its component(s) to be sure all parts and tools are accounted for and not damaged. If missing parts or parts are damaged, please contact your Selling Dealer for assistance.

If your accessory was purchased online, please contact POLARIS® customer service at **1-800-POLARIS** (US & Canada only).

APPLICATION

Verify accessory fitment at www.polaris.com.

REQUIRED SOLD SEPARATELY

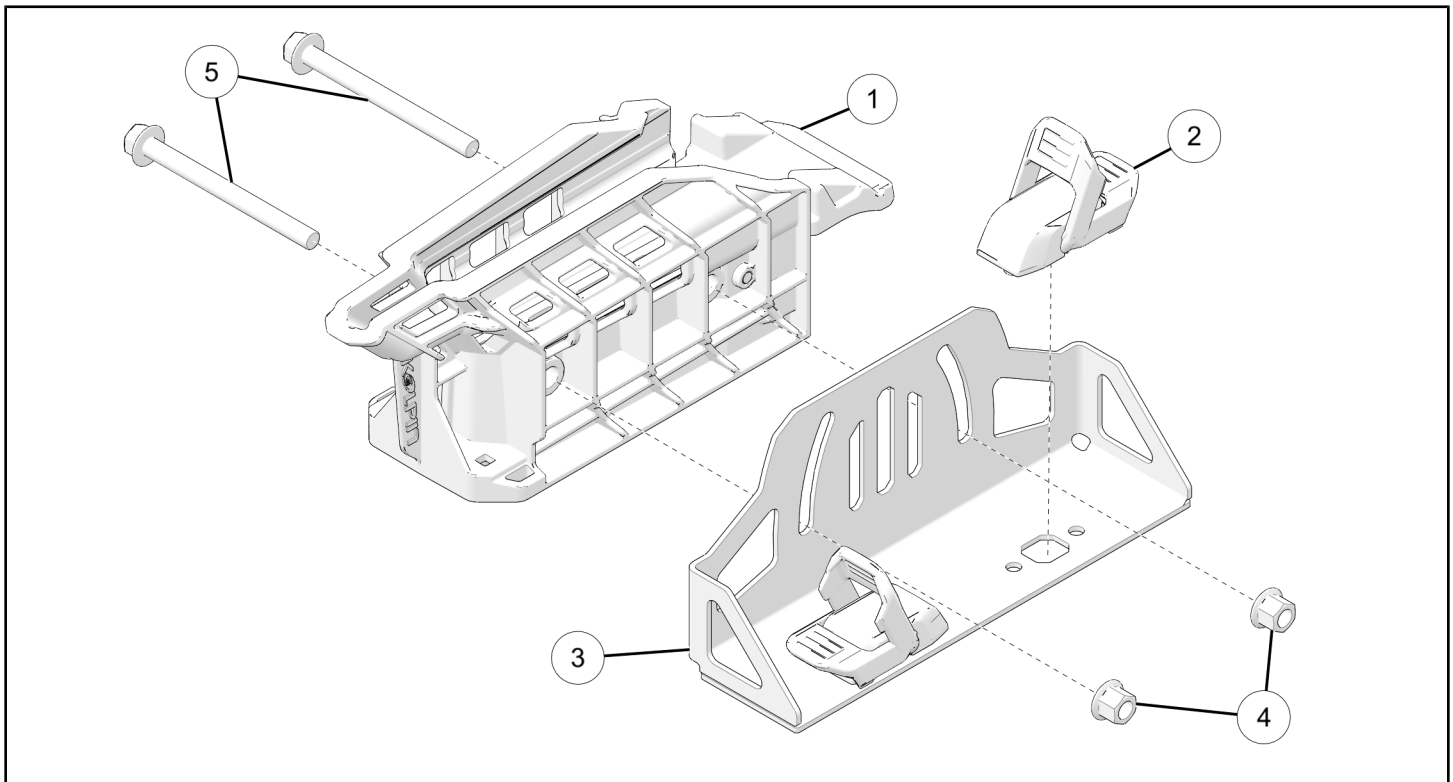
Only parts for installation of the Kolpin Stronghold® Rail Mount Kit are included. Prior installation of one of the following additional kits are also required (sold separately):

- *Crossbar Rail Kit*, P/N 2889468
- *Floor Rail Kit*, P/N 2889621, 2889622, 2889623
- *Platform Rack Kit*, P/N 2889236, 2889237, 2889590

PLATFORM RACK KIT INSTALLATION ONLY

Installation on a platform rack requires the use of Covered Fastener Assembly Kit, P/N 2889649.

KIT CONTENTS



REF	QTY	PART DESCRIPTION	P/N AVAILABLE SEPARATELY	AVAILABLE SERVICE KIT
1	1	Kolpin Stronghold® Mount Assembly	2636942	n/a
2	2	Lock & Ride MAX® Latching Assembly	2638786	2889648
3	1	Mounting Plate	n/a	n/a
4	2	Flange Hex Nut M10 x 1.5 mm	7520117	2209310
5	2	Flange Head Hex Screw M10 x 1.5 x 115 mm	7521333-115	2209310

TOOLS REQUIRED

- Safety Glasses
- Socket Set, Hex Bit, Metric
- Socket Set, Metric
- Tamper Proof Torx® Set
- Torque Wrench
- Wrench Set, Metric

IMPORTANT

Your Kolpin Stronghold® Rail Mount Kit is exclusively designed for your vehicle. Please read the installation instructions thoroughly before beginning. Installation is easier if the vehicle is clean and free of debris. For your safety, and to ensure a satisfactory installation, perform all installation steps correctly in the sequence shown.

INSTALLATION INSTRUCTIONS

VEHICLE PREPARATION

GENERAL

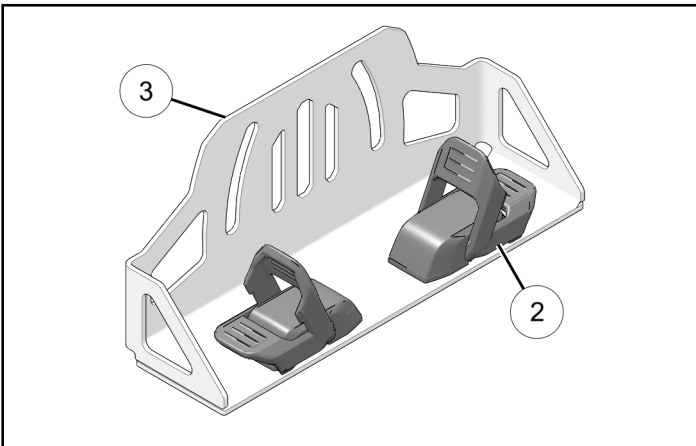
1. Park vehicle on a flat surface.
2. Shift vehicle into PARK.
3. Turn key to OFF position and remove key.

ACCESSORY INSTALLATION

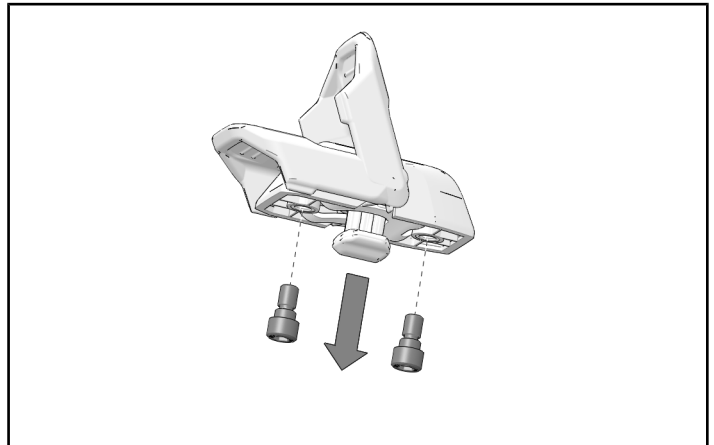
NOTICE

Crossbar installation shown; floor rail installation similar.

1. Lock & Ride MAX® latching assemblies ② and bracket ③, assembled view.



2. Remove two screws from the bottom of latching assembly.



3. Install latching assembly into the opening of compatible accessory. Tighten screws to specification.

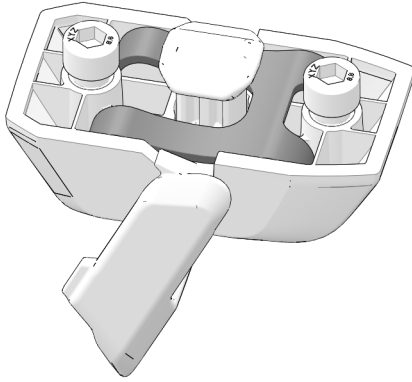
TORQUE

Latching Assembly Screws:
44 in-lbs (5 N·m)

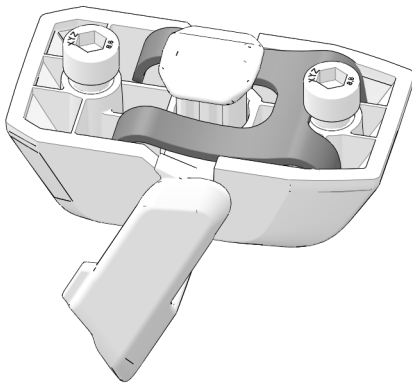
NOTICE

Check spring alignment and orientation while installing latching assembly.

- Correct assembly



- Incorrect assembly

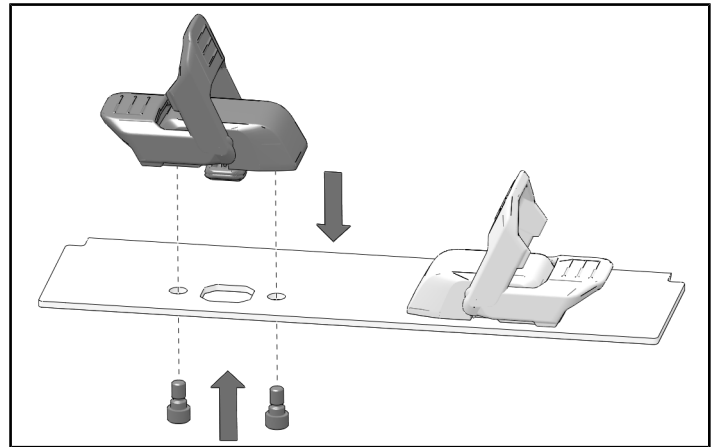


NOTICE

Sample accessory bracket shown.

IMPORTANT

Re-torque latching assembly screws to specification after initial 100 miles (160 km) of use. Re-torque screws at 500 miles (800 km) intervals after initial re-torque.



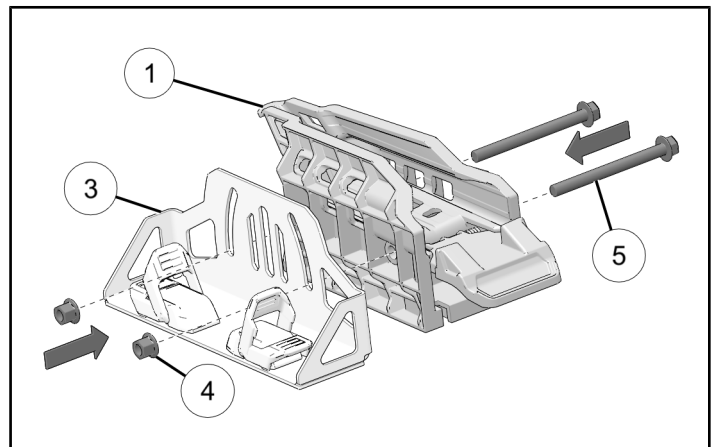
4. Install Kolpin Stronghold® mount ① to bracket ③. Install two flange head hex screws ⑤ and two hex nuts ④. Tighten screws ⑤ to specification.

TORQUE

Flange Head Hex Screws ⑤:
37 ft-lbs (50 N·m)

NOTICE

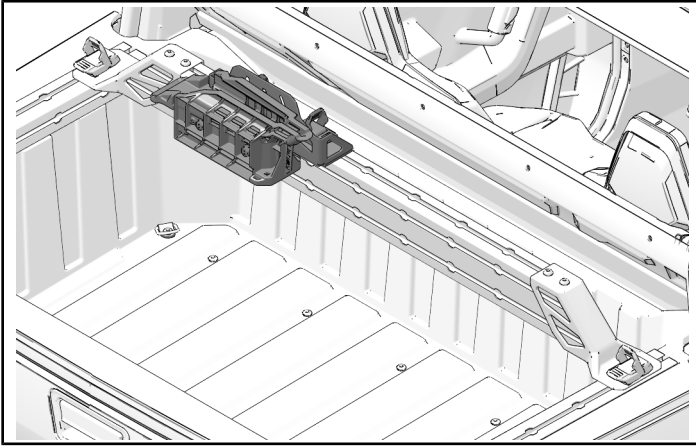
Angle of the mount can be changed by loosening the screws and repositioning along the slots.



- Attach assembly to the crossbar through the port openings. Position the assembly on the crossbar as desired. Clamp the slidelock assemblies.

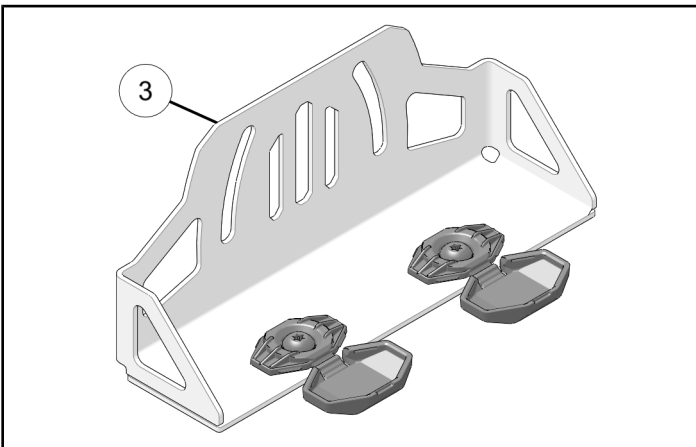
NOTICE

Make sure latching assemblies are clear of the port openings before clamping.

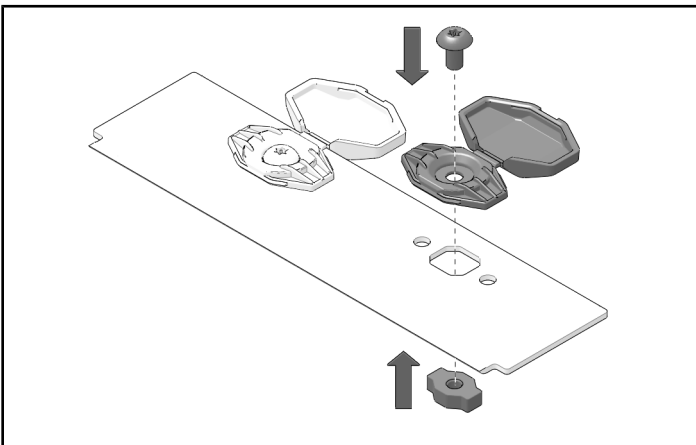


PLATFORM RACK INSTALLATION

- Covered Fastener Assembly kit (required sold separately) and bracket ③, assembled view.



- Loosely assemble Torx® screw, cover, and T-nut as shown.



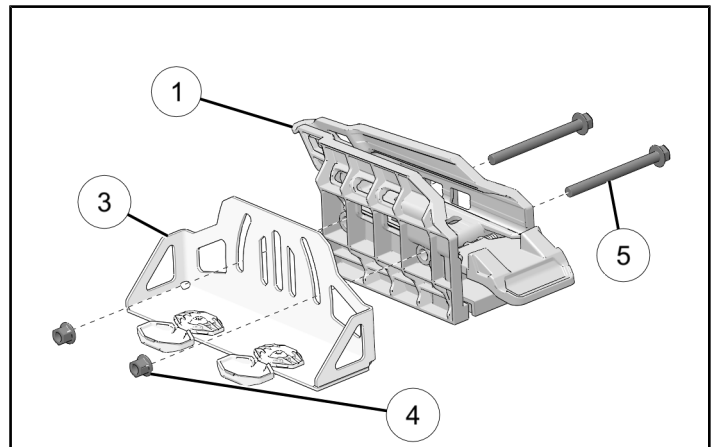
- Join Kolpin Stronghold® mount ① to bracket ③. Install two flange head hex screws ⑤ and two hex nuts ④. Tighten screws ⑤ to specification.

TORQUE

Flange Head Hex Screws ⑤:
37 ft-lbs (50 N·m)

NOTICE

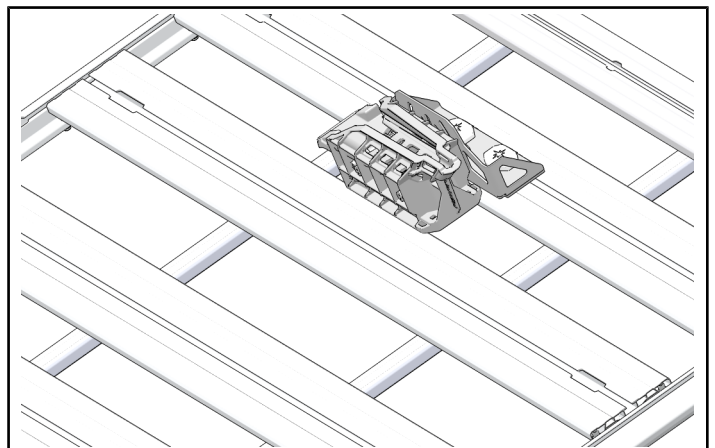
Angle of the mount can be changed by loosening the screws and repositioning along the slots.



- Attach assembly to the platform rack. Position the assembly on the crossbar as desired. Tighten screws to specification. Close the covers on the finish washers.

TORQUE

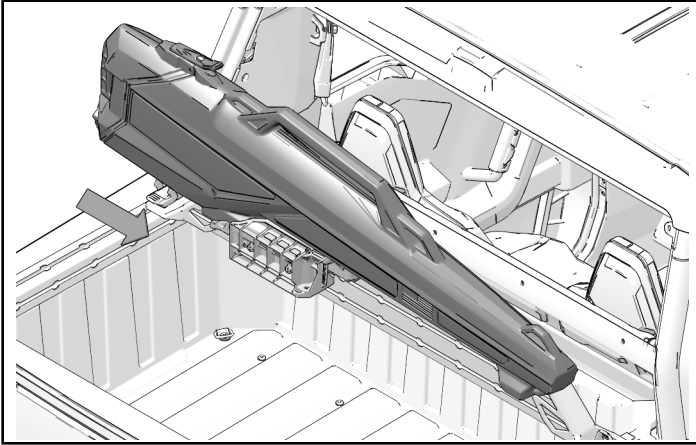
Covered Fastener Assembly Screws:
19 ft-lbs (26 N·m)



OPERATION

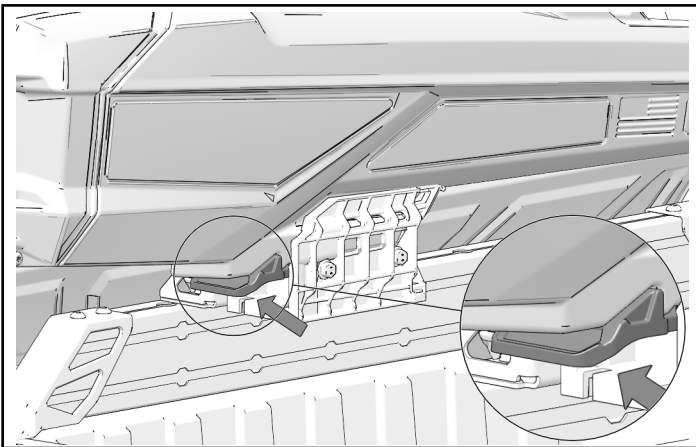
ENGAGEMENT OF GUN BOOT (SOLD SEPARATELY)

Slide gun boot into the mount until the mount locks the gun boot.



REMOVAL OF GUN BOOT

Press down on the lever to release the gun boot.



LATCHING ASSEMBLY SCREWS

1. Re-torque latching assembly screws to specification after initial 100 miles (160 km) of use. Re-torque screws at 500 miles (800 km) intervals after initial re-torque.

TORQUE

Latching Assembly Screws:
44 in-lbs (5 N·m)