

REAR VIEW MIRROR KIT



P/N 2889187

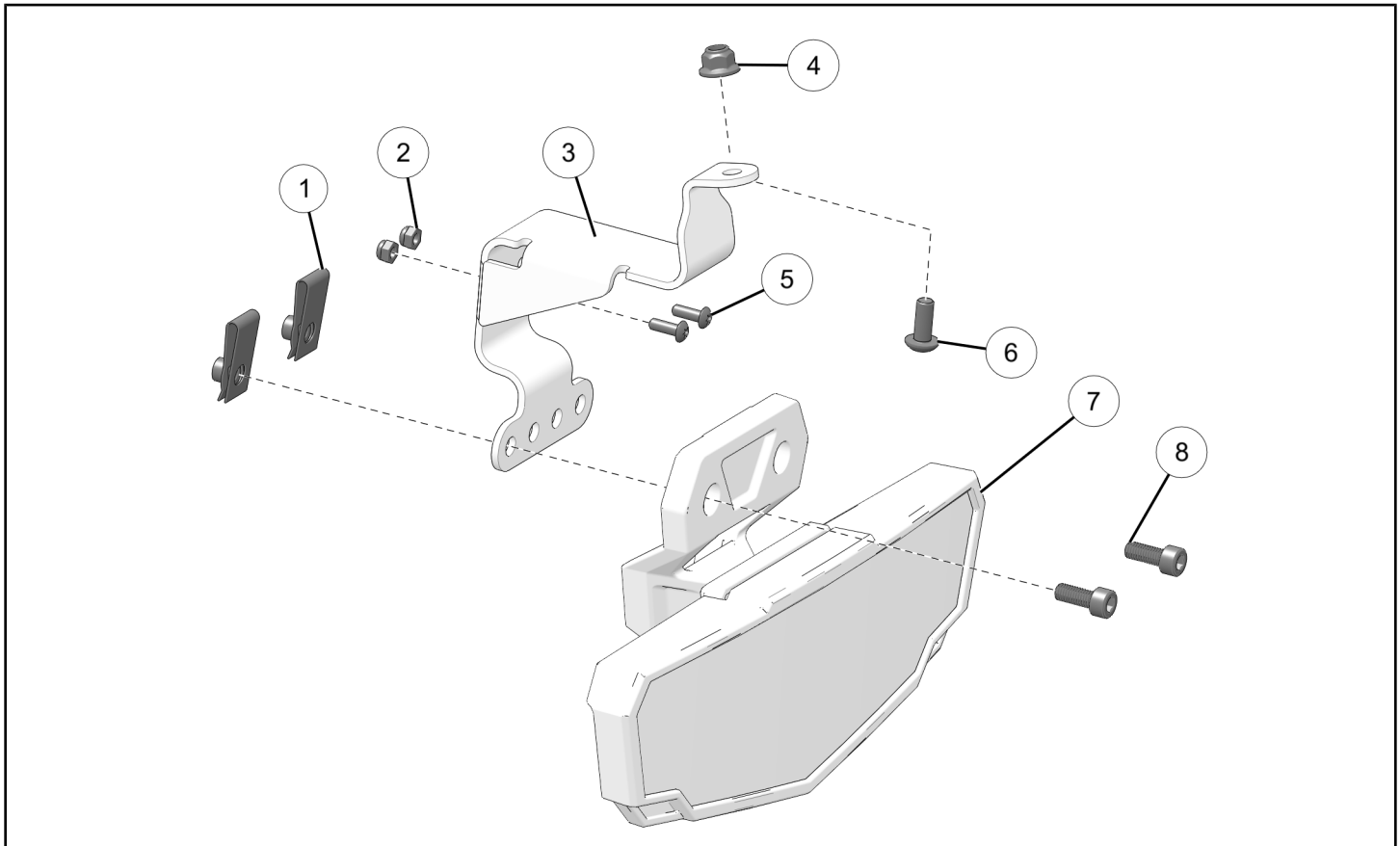
BEFORE YOU BEGIN

Read these instructions and check to be sure all parts and tools are accounted for. Please retain these installation instructions for future reference and parts ordering information.

APPLICATION

Verify accessory fitment at www.polaris.com.

KIT CONTENTS



REF	QTY	PART DESCRIPTION	P/N AVAILABLE SEPARATELY
1	2	Nut-U, Clip	n/a
2	2	Nut-Hex, Nylon Locking, M4 x 0.7 mm	7547126
3	1	Bracket-Mirror	5271533
4	1	Nut-Hex Flange, Nylon Locking, M6 x 1.0 mm	7547339
5	2	Screw-Torx® Pan Head, M4 x 0.7 x 12 mm	7521002
6	1	Screw-Torx® Pan Head, M6 x 1.0 x 15 mm	7518656
7	1	Assembly-Mirror	2638411
8	2	Screw-Socket Head, M6 x 1.0 x 15 mm	n/a

TOOLS REQUIRED

- Safety Glasses
- Hex Key Set, Metric
- Socket Set, Hex Bit, Metric
- Socket Set, Metric
- Socket Set, Torx® Bit
- Torque Wrench
- Wrench Set, Metric

IMPORTANT

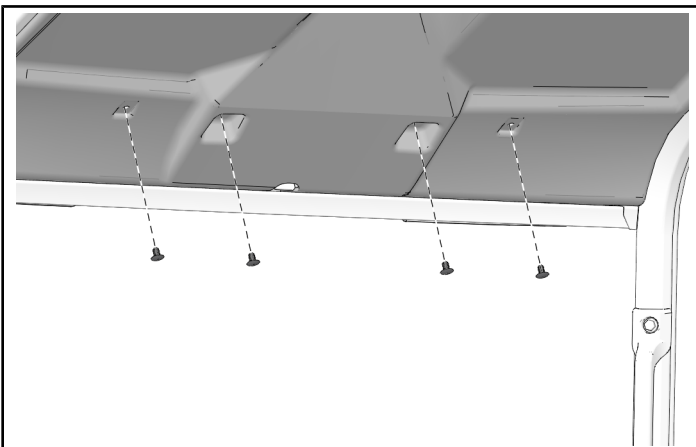
Your Rear View Mirror Kit is exclusively designed for your vehicle. Please read the installation instructions thoroughly before beginning. Installation is easier if the vehicle is clean and free of debris. For your safety, and to ensure a satisfactory installation, perform all installation steps correctly in the sequence shown.

INSTALLATION INSTRUCTIONS

VEHICLE PREPARATION

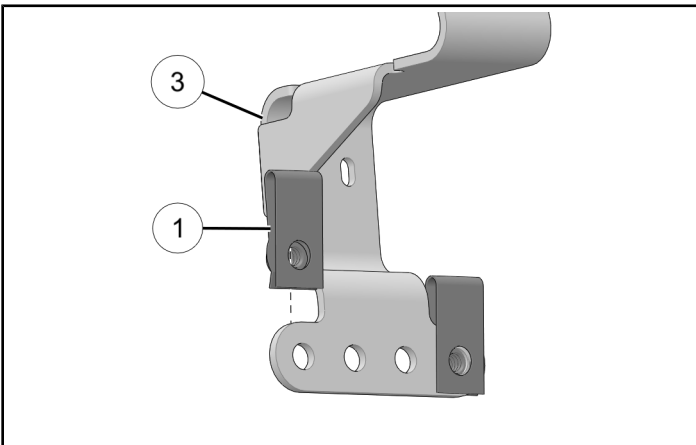
GENERAL

1. Park vehicle on a flat surface.
2. Shift vehicle into PARK.
3. Turn key to OFF position and remove key.
4. Roof Liner-Equipped Models:
Remove four push-darts from roof liner to access windshield mounting plate.



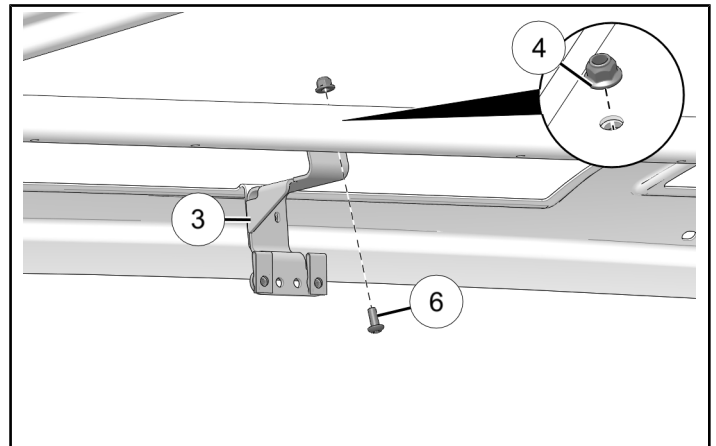
ACCESSORY INSTALLATION

1. Install two U-nuts (1) on mirror bracket (3).



2. Align mirror bracket (3) with windshield mounting plate and install with one bolt (6) and one nut (4).

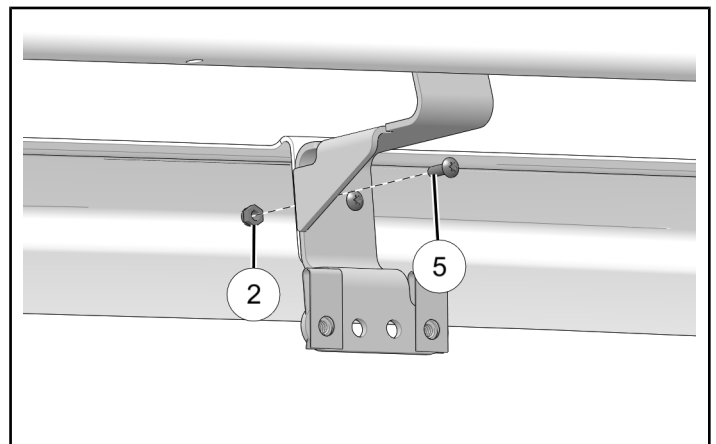
Do not torque fastener at this time.



3. Install mirror bracket to windshield mounting plate with two bolts (5) and two nuts (2). Counter-hold nuts and torque two bolts to specification.

TORQUE

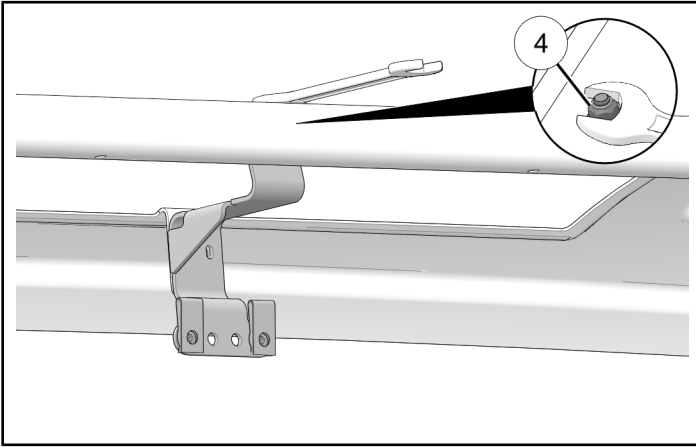
Mirror Bracket Bolts (5) (lower):
62 in-lbs (7 N·m)



- Counter-hold nut ④ and torque upper bolt ⑥ to specification.

TORQUE

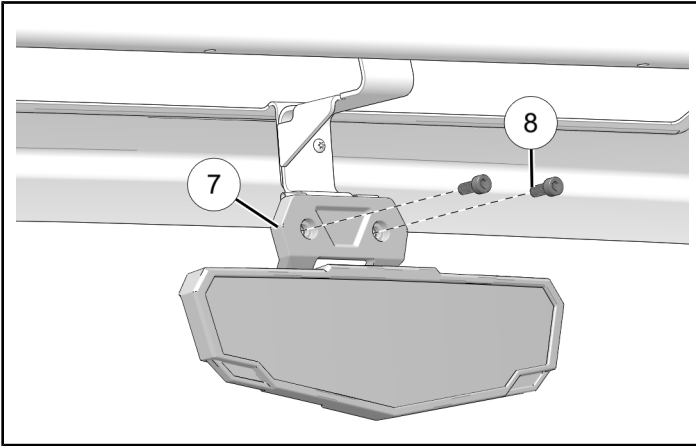
Mirror Bracket Bolt ⑥ (upper):
9 ft-lbs (12 N·m)



- Install mirror assembly ⑦ to mirror bracket with two bolts ⑧. Torque two bolts to specification.

TORQUE

Mirror Assembly Bolts ⑧:
62 in-lbs (7 N·m)



INSTRUCTION FEEDBACK FORM

A feedback form has been created for the installer to provide any comments, questions or concerns about the installation instructions. The form is viewable on mobile devices by scanning the QR code or by clicking [HERE](#) if viewing on a PC.



VEHICLE REASSEMBLY

GENERAL

- Roof Liner-Equipped Models:
Install roof liner with four push-darts.

