

REAR A-ARM GUARD KIT



P/N 2884715

MISSING OR DAMAGED PARTS

Before beginning assembly, inspect the kit and its component(s) to be sure all parts and tools are accounted for and not damaged. If missing parts or parts are damaged, please contact your Selling Dealer for assistance.

If your accessory was purchased online, please contact POLARIS® customer service at **1-800-POLARIS** (US & Canada only).

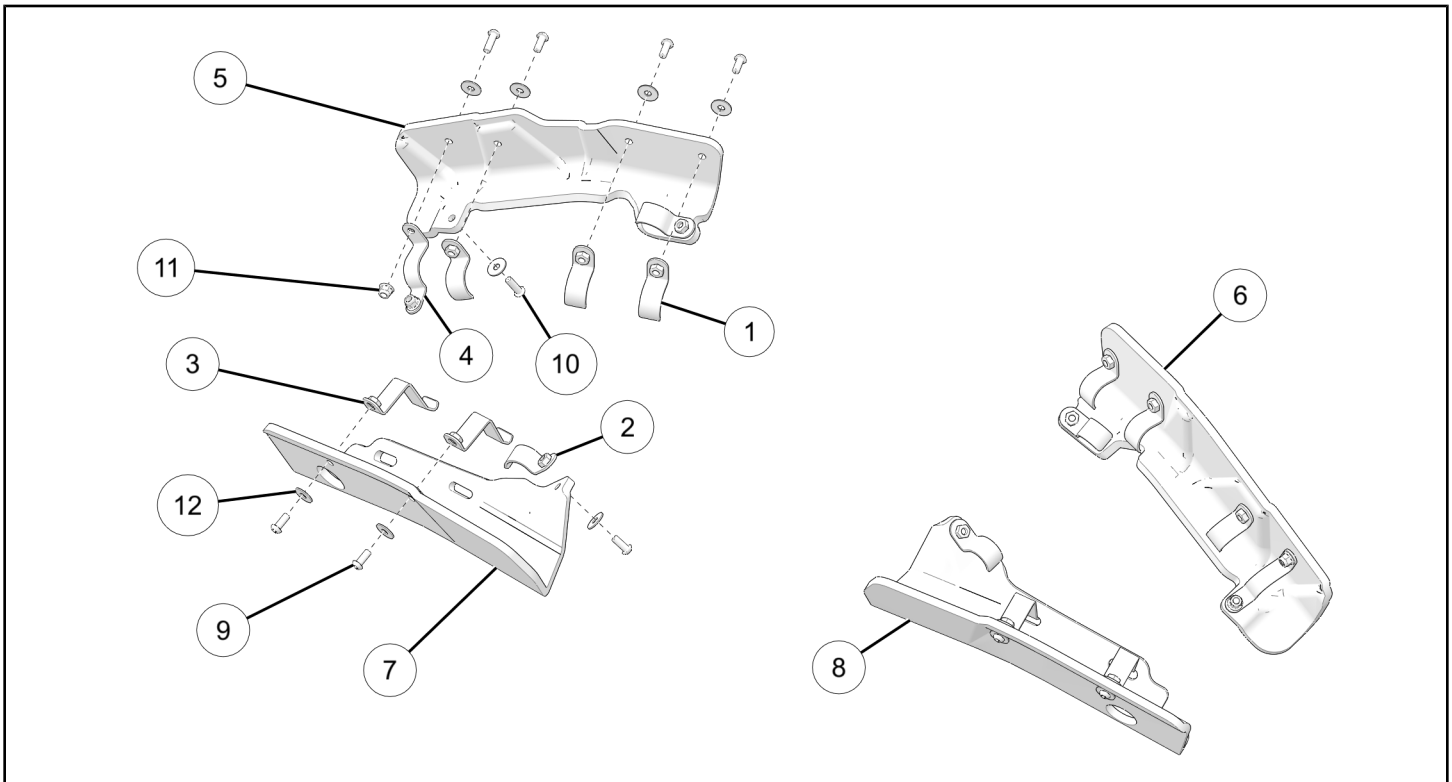
APPLICATION

Verify accessory fitment at www.polaris.com.

IMPORTANT

The *Rear A-Arm Guard Kit* is not compatible with Track Kits.

KIT CONTENTS



REF	QTY	PART DESCRIPTION	P/N AVAILABLE SEPARATELY	AVAILABLE SERVICE KIT
1	6	P-Clamp	n/a	2211617
2	4	Side Clamp	n/a	2211617
3	4	Tube Clamp	n/a	2211617
4	2	Brkt-Mnt, Cont Arm, Guard	n/a	2211617
5	1	Arm Guard, Left-Hand-A, Rear	n/a	n/a
6	1	Arm Guard, Right-Hand-A, Rear	n/a	n/a

REF	QTY	PART DESCRIPTION	P/N AVAILABLE SEPARATELY	AVAILABLE SERVICE KIT
7	1	Arm Guard, Left-Hand-B, Rear	n/a	n/a
8	1	Arm Guard, Right-Hand-B, Rear	n/a	n/a
9	14	Screw-Torx® Button Head M8 x 1.25 x 20 mm	7527948-20	2211617
10	4	Screw-Torx® Button Head M8 x 1.25 x 25 mm	7527948-25	2211617
11	4	Nut M8 x 1.25 mm	7547454	2211617
12	18	Washer 8.4 x 24.0 x 2.0 mm	7556045	2211617

TOOLS REQUIRED

- Safety Glasses
- Socket Set, Metric
- Hex Key Set, Metric
- Torque Wrench

IMPORTANT

Your Rear A-Arm Guard Kit is exclusively designed for your vehicle. Please read the installation instructions thoroughly before beginning. Installation is easier if the vehicle is clean and free of debris. For your safety, and to ensure a satisfactory installation, perform all installation steps correctly in the sequence shown.

INSTALLATION INSTRUCTIONS

VEHICLE PREPARATION

GENERAL

1. Park vehicle on a flat surface.
2. Shift vehicle into PARK.
3. Turn key to OFF position and remove key.

ACCESSORY INSTALLATION

NOTICE

Left side shown; right side similar.

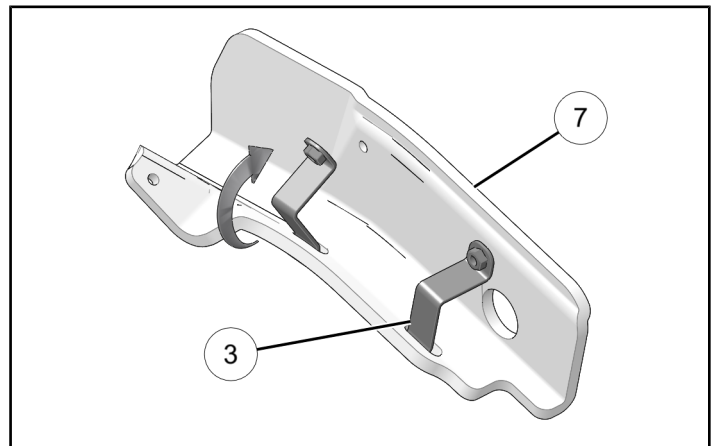
NOTICE

Wheels hidden for clarity.

TIP

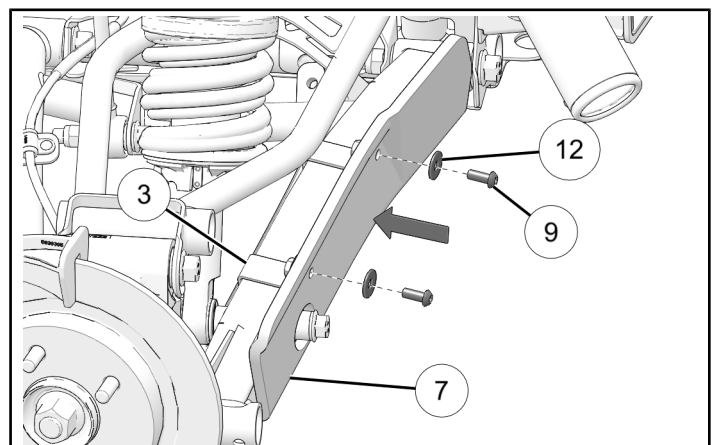
To ease installation, elevate vehicle off ground, and remove wheels.

1. Install two clamps into the slots on arm guard ⑦. Put hooked end of clamp through slot in guard.

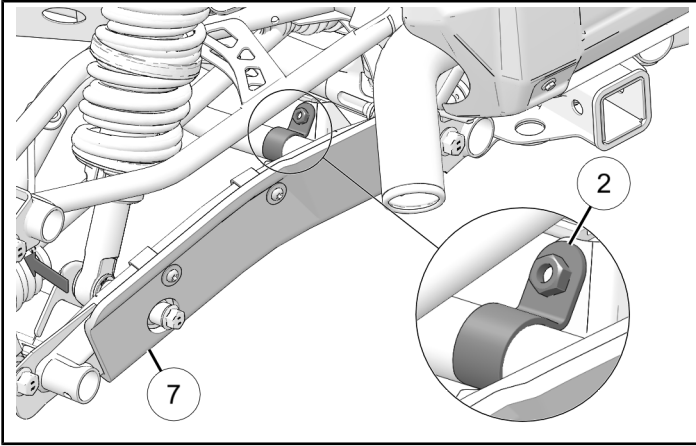


2. Install guard ⑦ onto rear side of control arm. Wrap clamps around tube. Install two screws ⑨ and two washers ⑫.

DO NOT torque fasteners at this time.

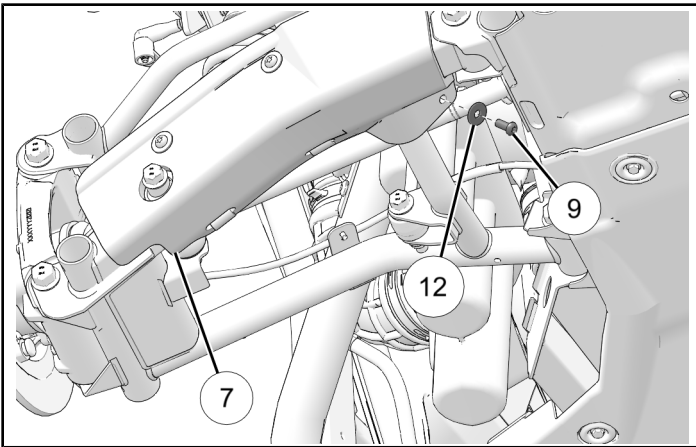


3. Install side clamp ② at inside end of guard ⑦.
Make sure that clamp is firmly positioned against tube.

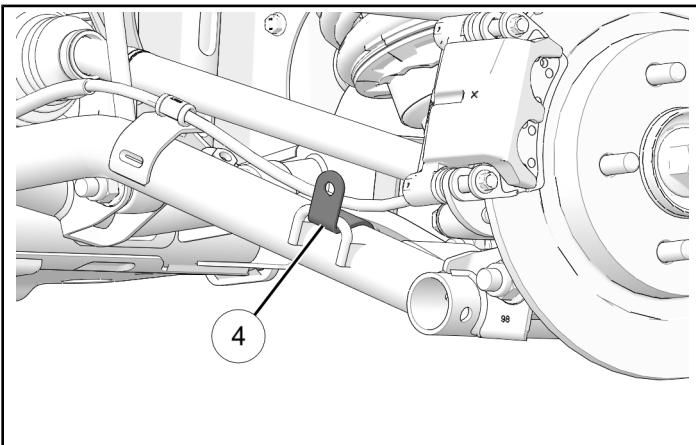


4. Install screw ⑨ and washer ⑫ for side clamp from underside of guard ⑦.

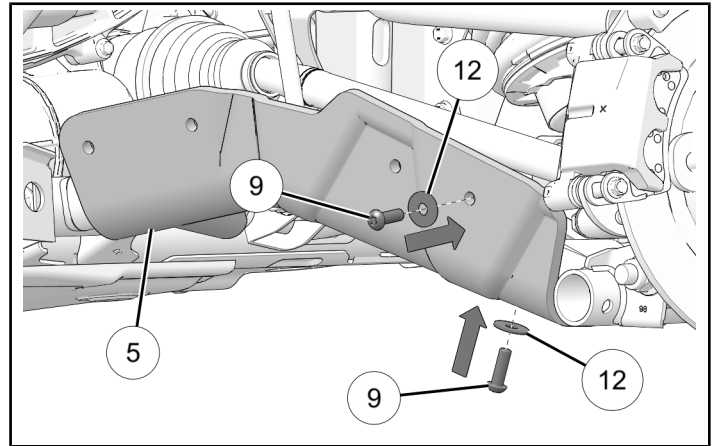
DO NOT torque fasteners at this time.



5. Install bracket ④ on front of control arm. End of bracket will pass through wire mount on control arm.

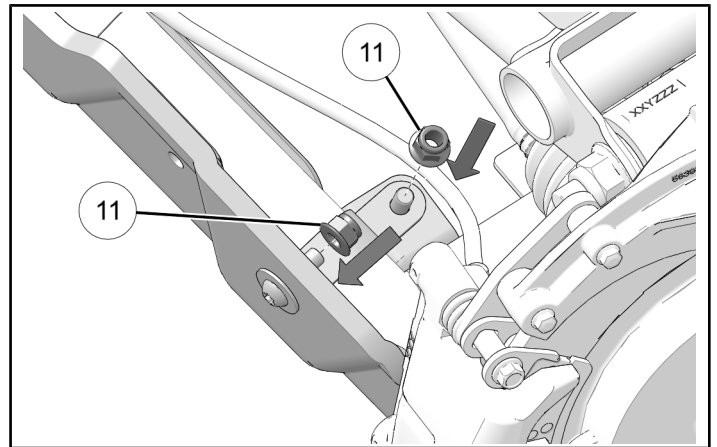


6. Install arm guard ⑤ on front of control arm. Install two screws ⑨ and two washers ⑫ through guard ⑤ and bracket ④.



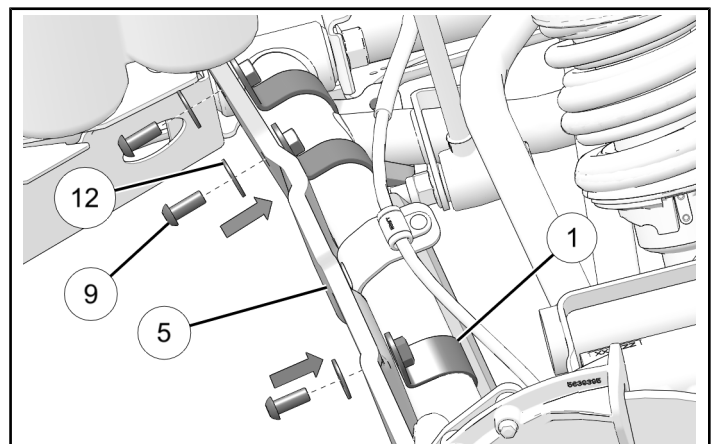
7. Install nuts ⑪ on screws for bracket.

DO NOT torque fasteners at this time.

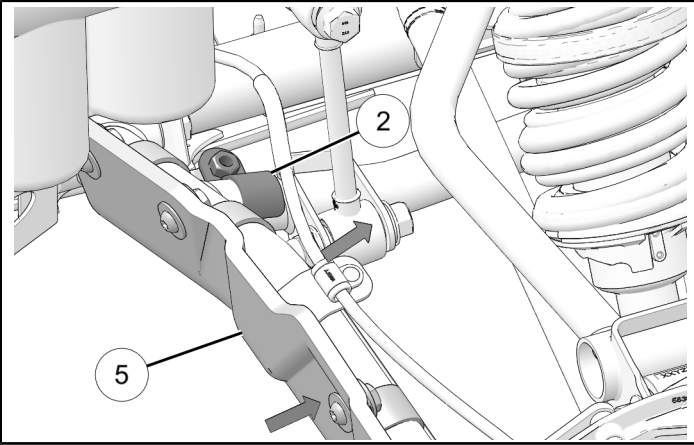


8. Install three P-clamps ①. Make sure clamps are positioned firmly against tube. Install screw ⑨ and washer ⑫ for each P-clamp.

DO NOT torque fasteners at this time.

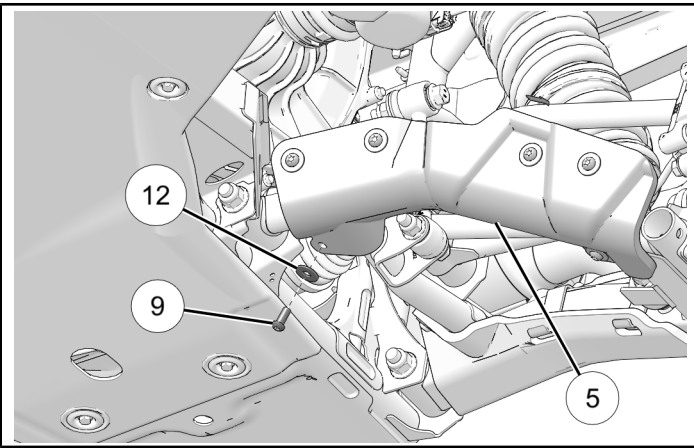


9. Install side clamp ② at inside end of guard ⑤.
Make sure clamp is firmly positioned against tube.



10. Install screw ⑨ and washer ⑫ for side clamp from underside of guard ⑤.

DO NOT torque fasteners at this time.



11. Torque all fasteners to specification.

TORQUE

Screws ⑨:
15 ft-lbs (20 N·m)

12. Repeat procedure for other side of vehicle.