

PLATFORM BED RACK KIT

POLARIS

ENGINEERED PARTS
ACCESSORIES & APPAREL

P/N 2889443

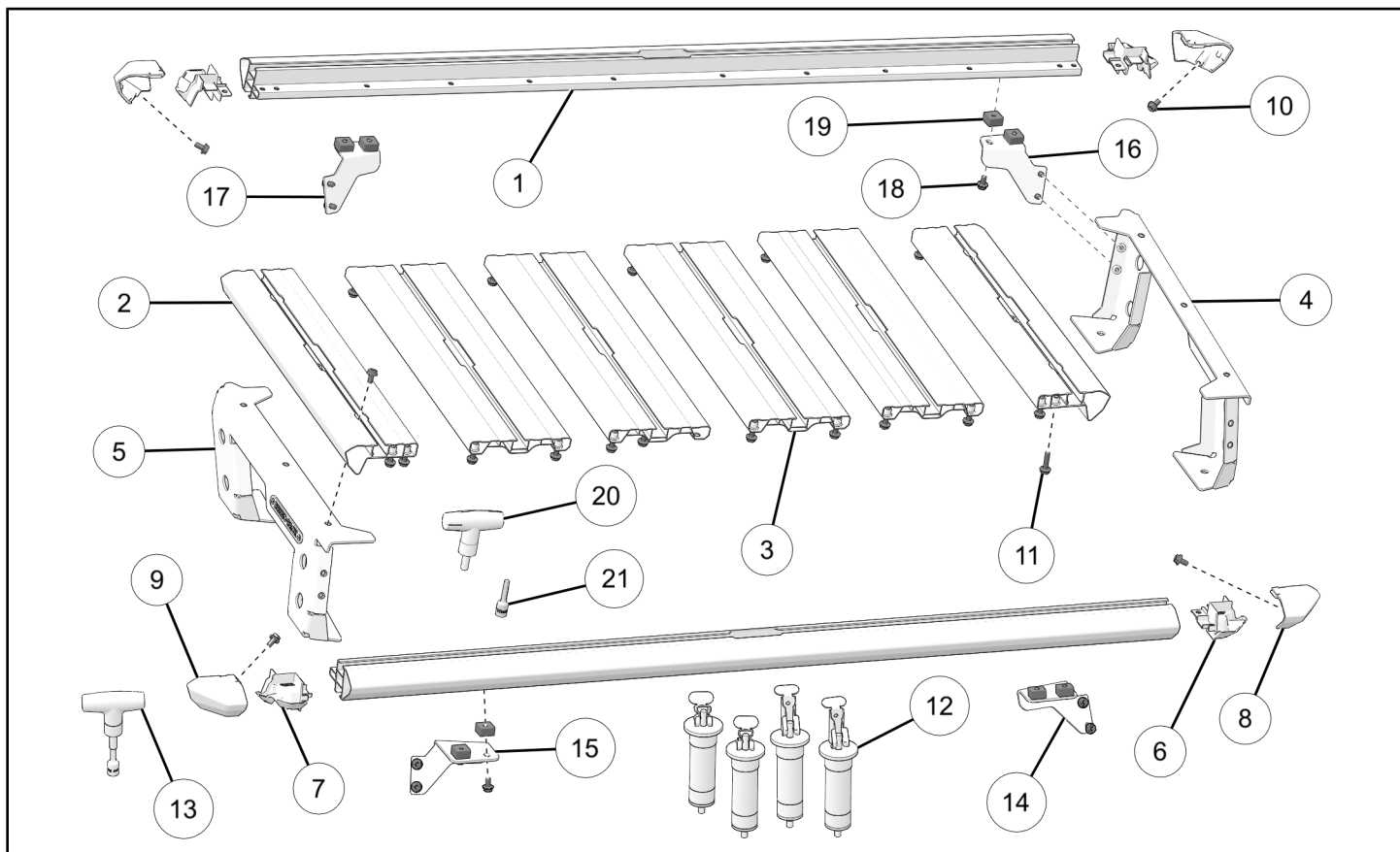
BEFORE YOU BEGIN

Read these instructions and check to be sure all parts and tools are accounted for. Please retain these installation instructions for future reference and parts ordering information.

APPLICATION

Verify accessory fitment at www.polaris.com.

KIT CONTENTS



REF	QTY	PART DESCRIPTION	P/N AVAILABLE SEPARATELY	AVAILABLE SERVICE KIT
1	2	Platform Extrusion, Front and Rear	n/a	n/a
2	2	Platform Extrusion, Sides	n/a	n/a
3	4	Platform, Main Planks	n/a	n/a
4	1	Backbone – Bed, Right-hand	n/a	2889444
5	1	Backbone – Bed, Left-hand	n/a	2889444
6	2	Corner Base, Right-hand	n/a	2209074
7	2	Corner Base, Left-hand	n/a	2209074
8	2	Corner Cover, Right-hand	n/a	2209074

REF	QTY	PART DESCRIPTION	P/N AVAILABLE SEPARATELY	AVAILABLE SERVICE KIT
9	2	Corner Cover, Left-hand	n/a	2209074
10	4	Bolt – Hex Head Flanged, M6 x 12 mm	n/a	2209074
11	24	Bolt – Hex Head Flanged, M6 x 25 mm	n/a	2209253
12	4	Anchor Kit, Lock & Ride®	2877877	n/a
13	1	Torque Tool, 53 in-lbs (6 N·m)	n/a	n/a
14	1	Brace – Bed Rack, Front, Right-hand	n/a	n/a
15	1	Brace – Bed Rack, Front, Left-hand	n/a	n/a
16	1	Brace – Bed Rack, Rear, Right-hand	n/a	n/a
17	1	Brace – Bed Rack, Rear, Left-hand	n/a	n/a
18	22	Bolt – Hex Head Flanged, M6 x 12 mm	n/a	2209253
19	8	Nut – Channel, M6	n/a	2209253
20	1	Torque Tool Handle	n/a	n/a
21	1	Socket – 10 mm with 1/4 in Hex Driver	n/a	n/a

TOOLS REQUIRED

- Safety Glasses
- Socket Set, Metric
- Socket with Hex Driver (provided)
- Torque Tool (provided)

IMPORTANT

Your Platform Bed Rack Kit is exclusively designed for your vehicle. Please read the installation instructions thoroughly before beginning. Installation is easier if the vehicle is clean and free of debris. For your safety, and to ensure a satisfactory installation, perform all installation steps correctly in the sequence shown.

INSTALLATION INSTRUCTIONS

VEHICLE PREPARATION

GENERAL

1. Park vehicle on a flat surface.
2. Shift vehicle into PARK.
3. Turn key to OFF position and remove key.

ACCESSORY INSTALLATION

PLATFORM ASSEMBLY

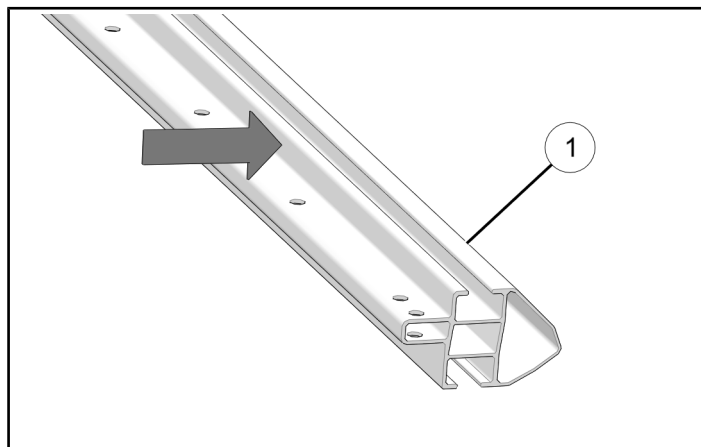
TIP

Assemble bed rack platform on soft surface to prevent damage to platform.

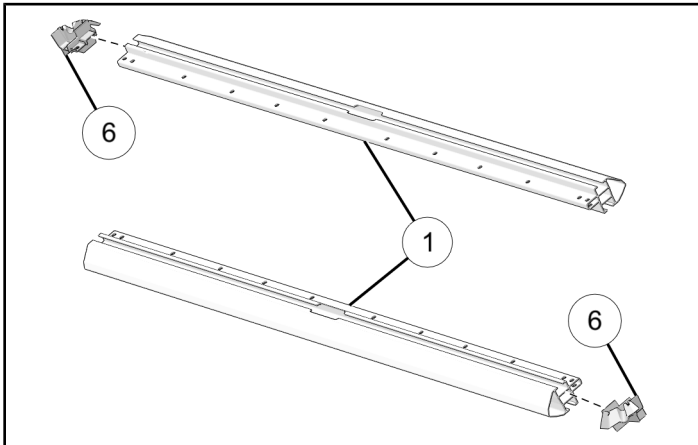
NOTICE

Platform bed rack will be assembled with bottom of rack facing up.

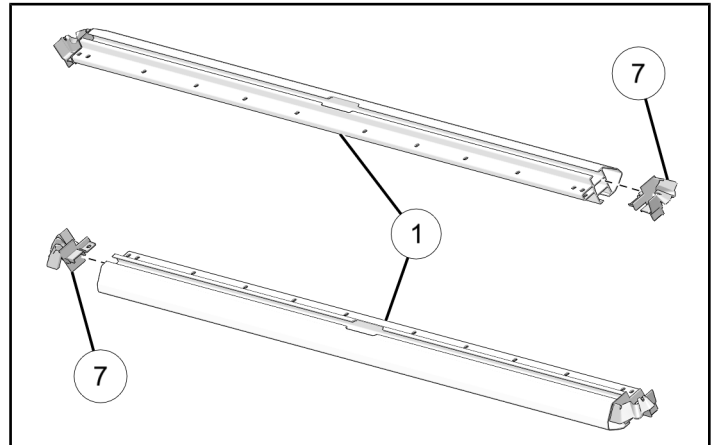
1. Set front and rear extrusion ① onto soft surface with shorter edge facing up.



2. Install two right-hand corner base pieces ⑥ to front and rear extrusions ①.



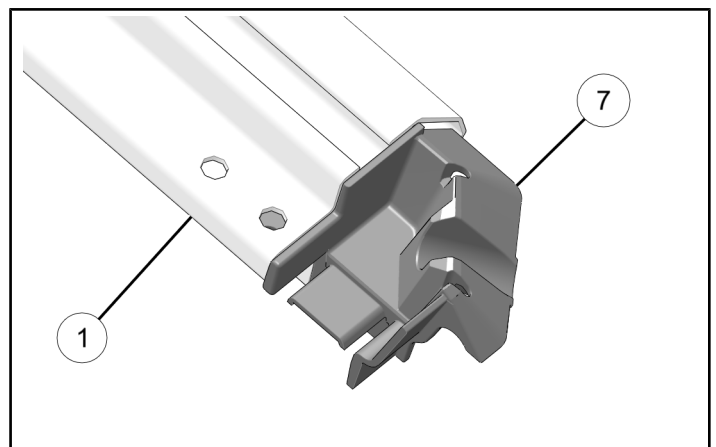
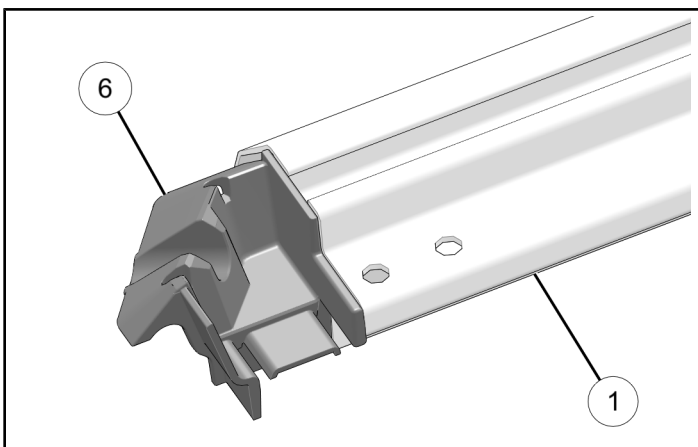
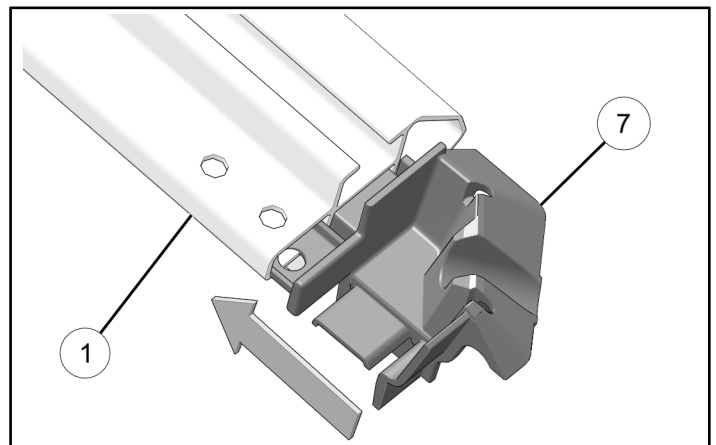
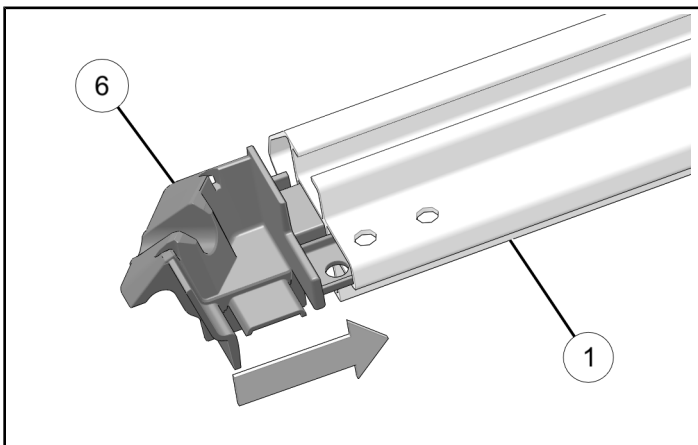
4. Install two left-hand corner base pieces ⑦ to front and rear extrusions ①.



3. Insert right-hand corner base pieces ⑥ inside the channel on each end of extrusion ①.

NOTICE

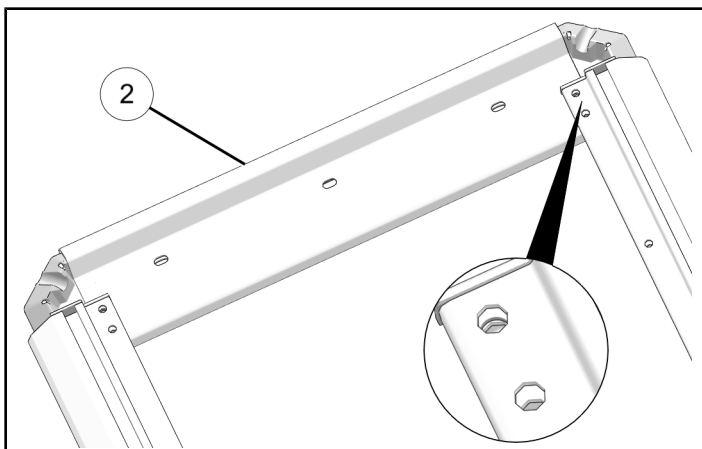
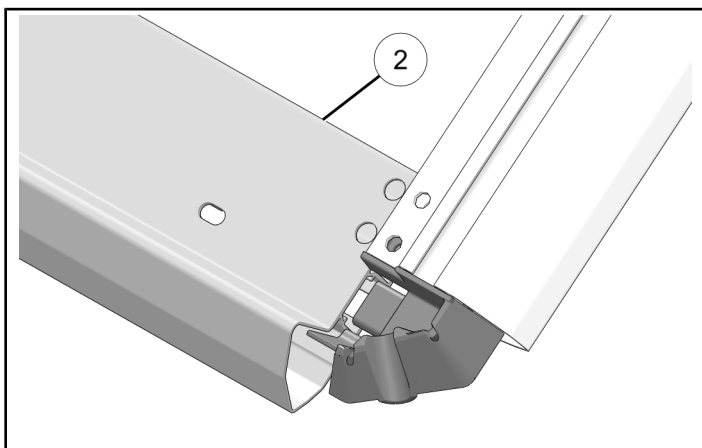
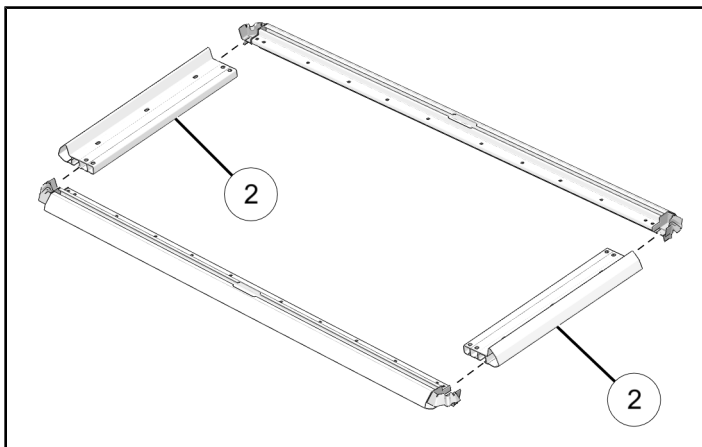
Make sure holes on corner base pieces align with holes on extrusion.



6. Slide two side extrusions ② into each corner base.

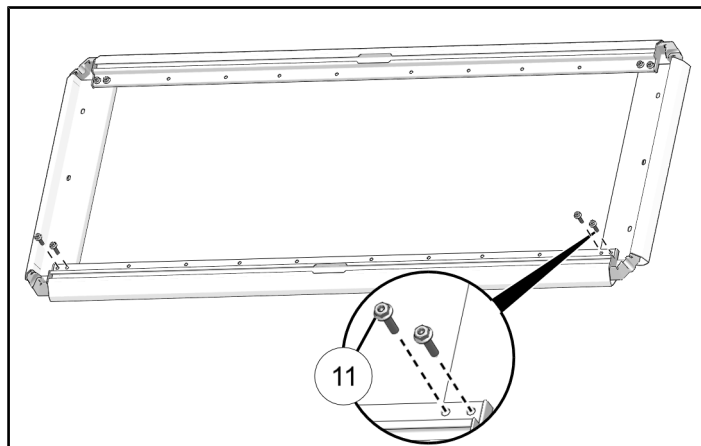
IMPORTANT

Make sure the holes on the side extrusions align with the holes on the front and rear extrusion bar assemblies.



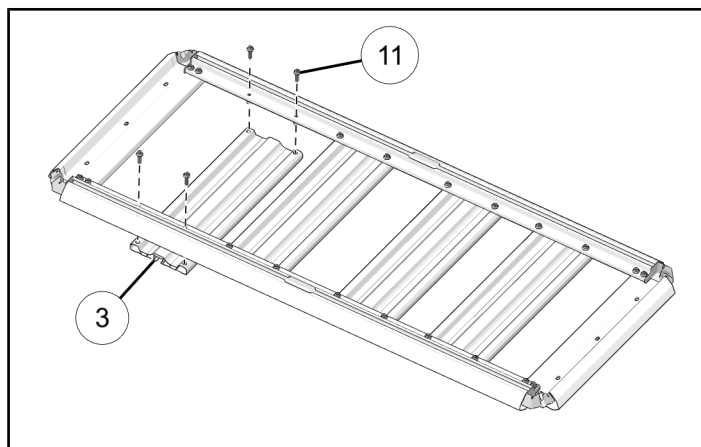
7. Loosely install side extrusions with eight bolts ⑪.

Do not torque bolts at this time.



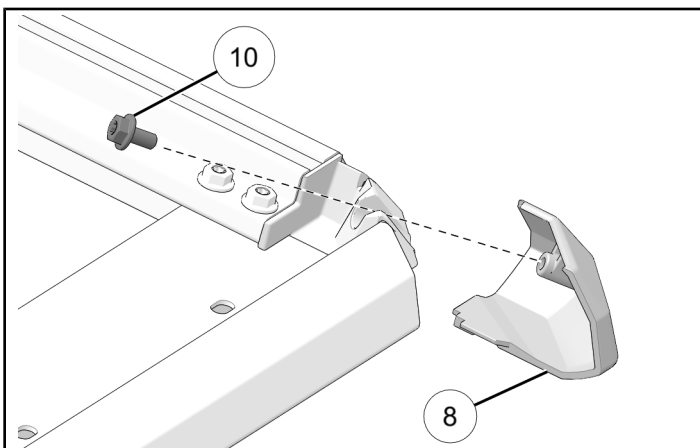
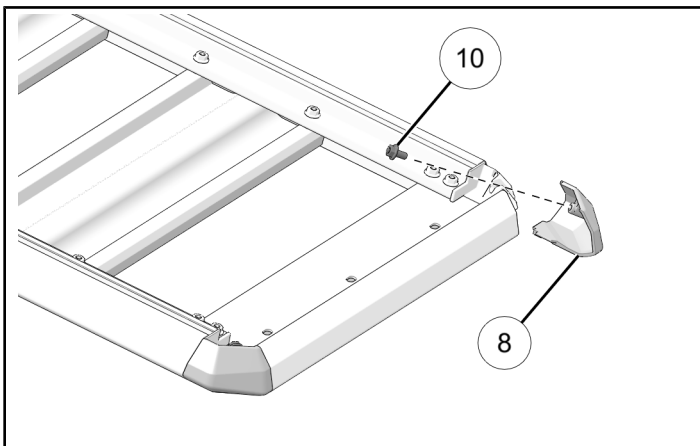
8. Loosely install four platform planks ③ to platform frame assembly with sixteen bolts ⑪.

Do not torque bolts at this time.



9. Loosely attach two right-hand ⑧ and two left-hand ⑨ corner covers with four bolts ⑩.

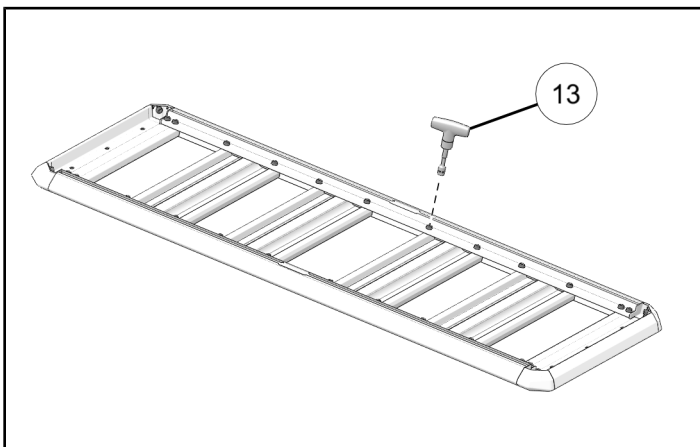
Do not torque bolts at this time.



10. Torque all bolts with torque tool ⑬.

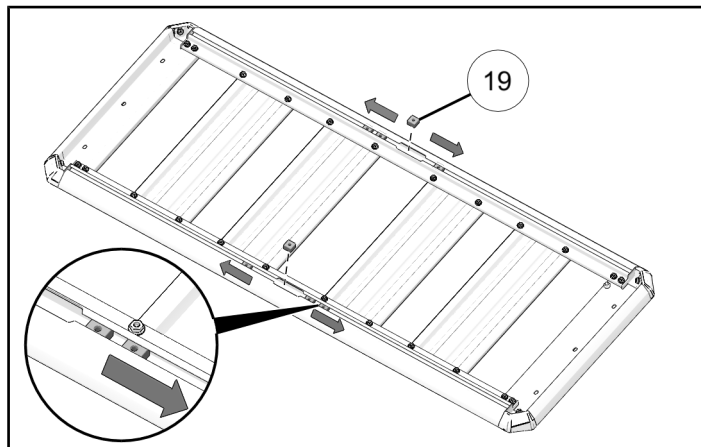
NOTICE

Turn each bolt with torque tool until it clicks.



PLATFORM BRACKET INSTALLATION

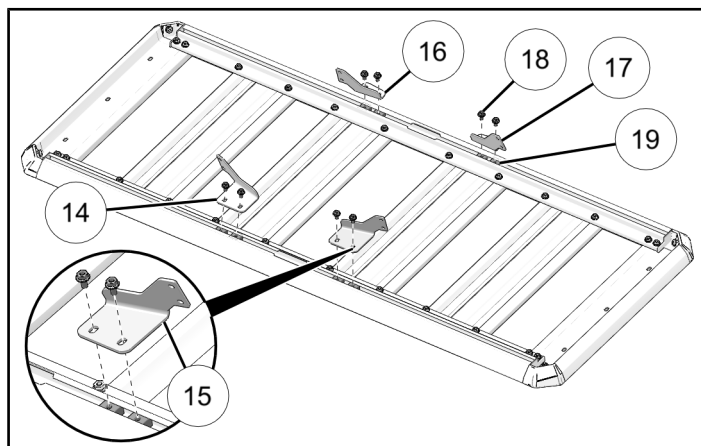
1. Put eight channel nuts ⑲ into platform rack frame, as shown.



2. Loosely install four platform braces onto platform with eight bolts ⑱ into eight channel nuts ⑲.

NOTICE

Make sure bolts are tight enough to prevent braces from moving around.



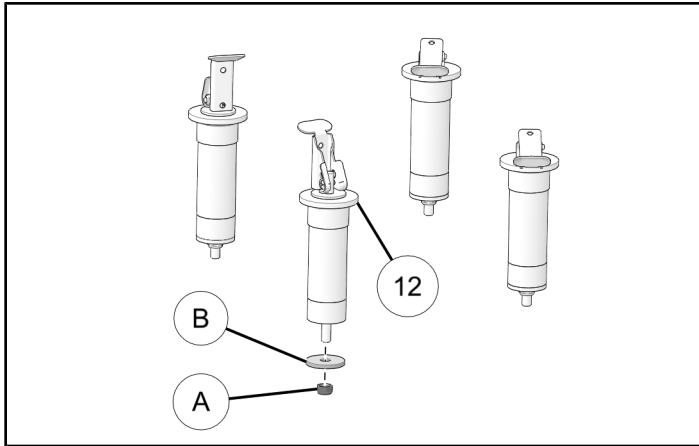
3. Set platform assembly aside.

LOCK & RIDE® ANCHOR INSTALLATION

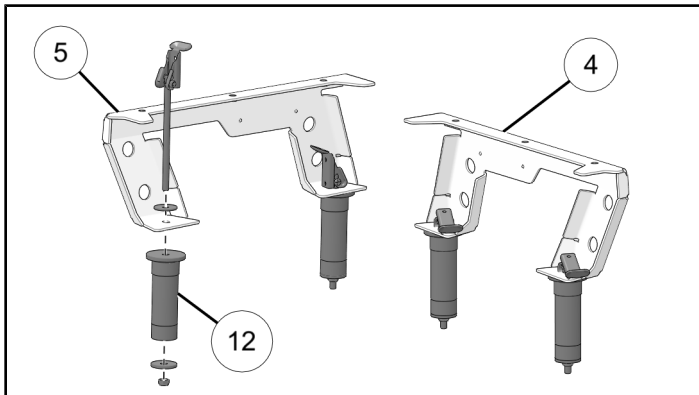
1. Remove nut (A) and washer (B) from each Lock & Ride® anchor.

IMPORTANT

Make sure Lock & Ride® anchors are in the open position.



2. Install four Lock & Ride® anchors (12) to right-hand bed backbone (4) and left-hand bed backbone (5).



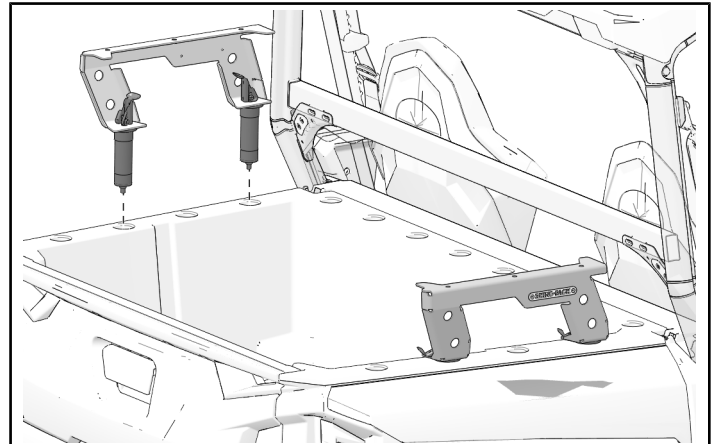
3. Install washer and nut onto each Lock & Ride® anchor.

BED BACKBONE INSTALLATION

1. Open each Lock & Ride® anchor.
2. Align Lock & Ride® anchors on bed backbones with holes on cargo box.

NOTICE

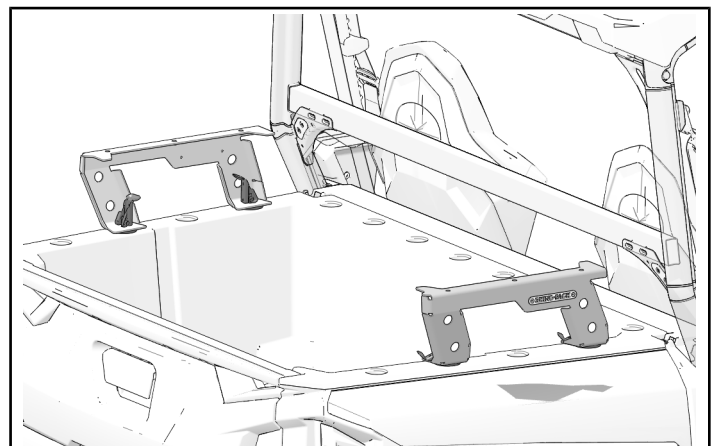
Platform bed rack can only be installed on cargo box closest to vehicle cab, as shown.



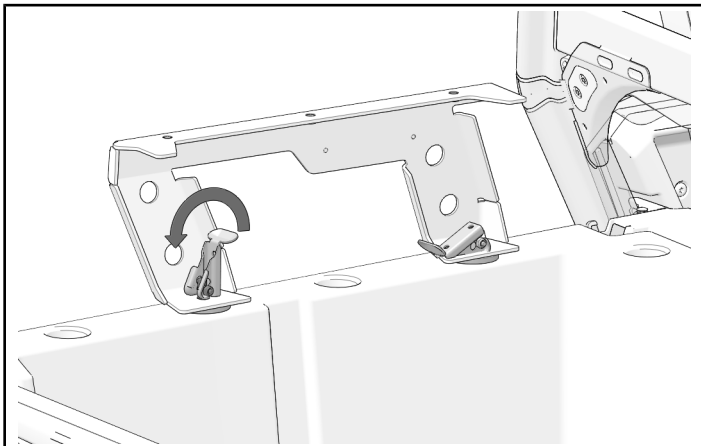
3. Install each bed backbone onto cargo box until anchors are fully seated.

IMPORTANT

Make sure rubber washers on Lock & Ride® anchors are seated inside holes on cargo box.

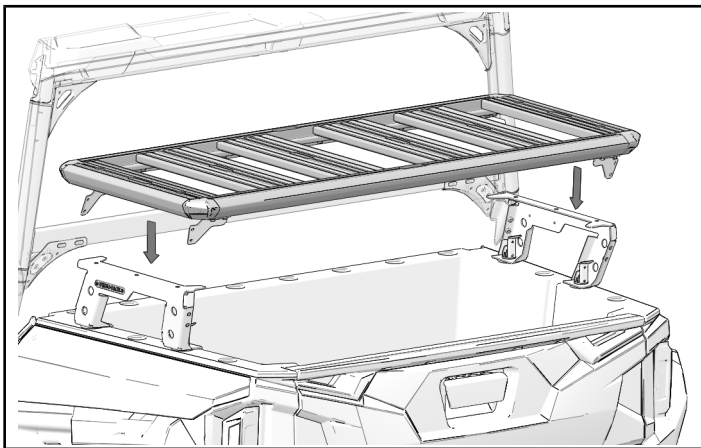


4. Lock each anchor to hold bed backbones onto vehicle. Refer to instructions included with Lock & Ride® anchors.

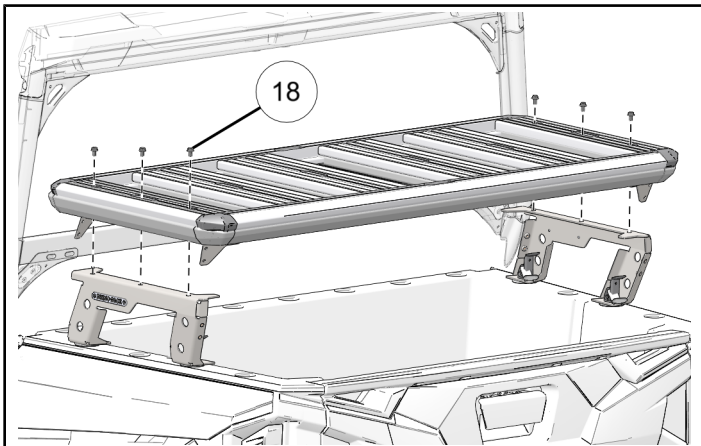


PLATFORM INSTALLATION

1. Set platform assembly onto installed bed backbones.



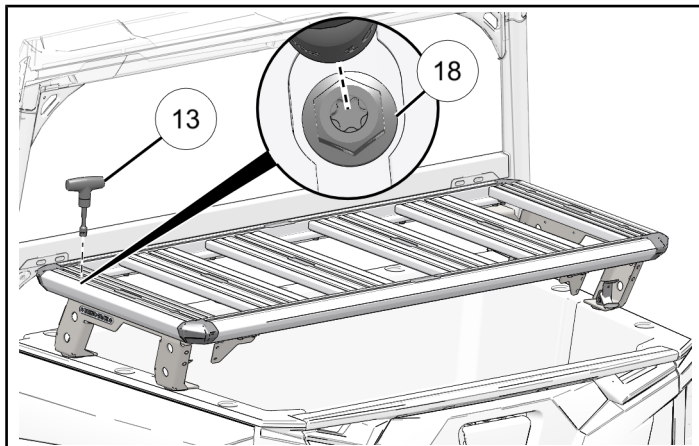
2. Align bolt holes on platform with bolt holes on bed backbones.
3. Loosely install six bolts ⑱ through platform and into bed backbones.



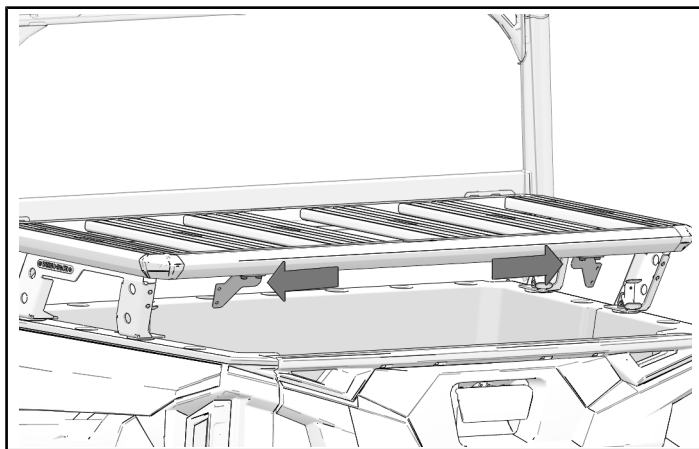
4. Torque six bolts ⑱ with torque tool ⑬.

NOTICE

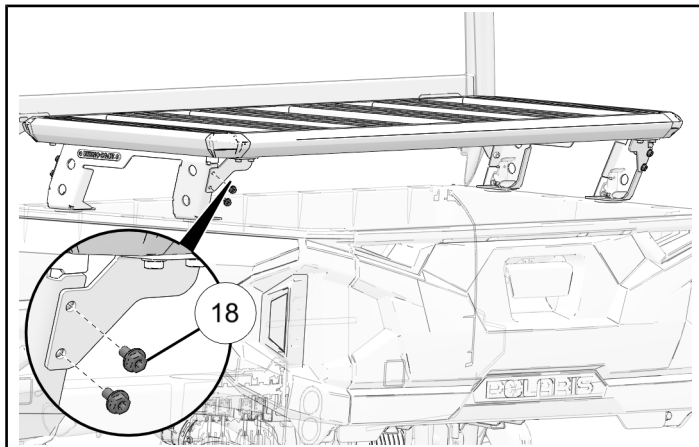
Turn each bolt with torque tool until it clicks.



5. Slide one platform brace to each corner on the rear-side and the front-side of the platform.



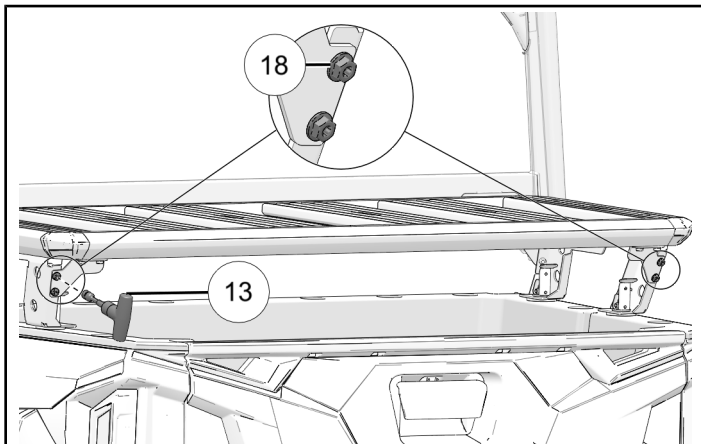
6. Attach each platform brace to the bed backbones with two bolts ⑱.



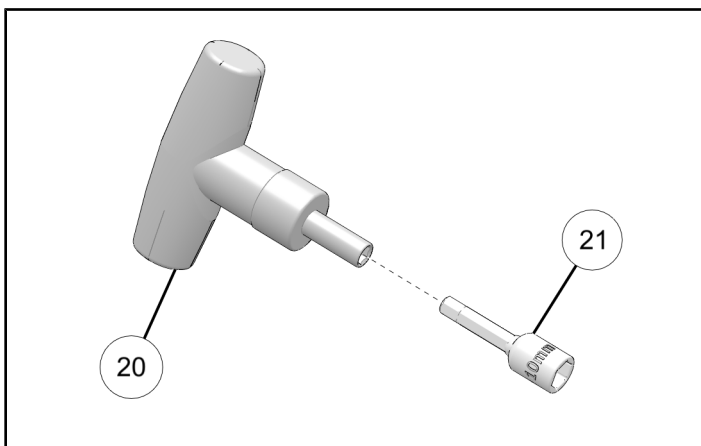
7. Torque four rear-side bolts ⑱ with torque tool ⑬.

NOTICE

Turn each bolt with torque tool until it clicks.



8. Attach socket ⑳ to torque tool ㉔.

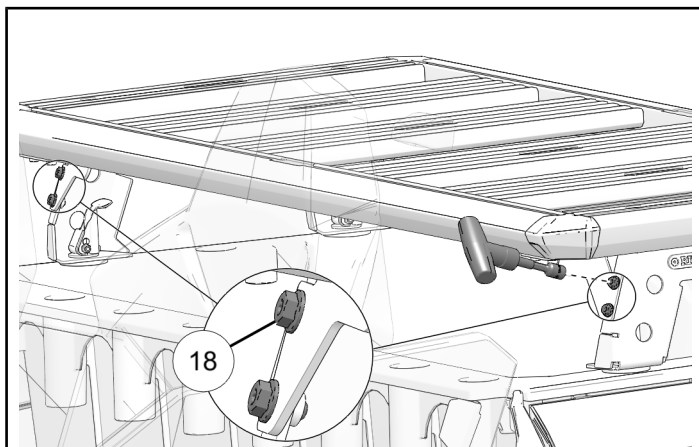


9. Torque four front-side bolts ⑱ with torque tool assembly.

NOTICE

Turn each bolt with torque tool until it clicks.

NOTICE
Rear seats and ROPS of vehicle hidden for image clarity.



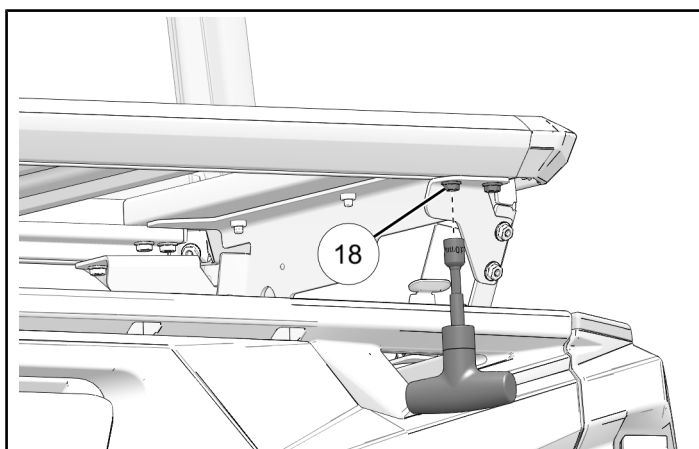
10. Torque eight channel nut bolts ⑱ with torque tool assembly.

NOTICE

Turn each bolt with torque tool until it clicks.

IMPORTANT

Weight limit of Platform Bed Rack is 50 lb (23 kg). To prevent damage to Platform Bed Rack never exceed the standard weight limit of 50 lb (23 kg).



INSTRUCTION FEEDBACK FORM

A feedback form has been created for the installer to provide any comments, questions or concerns about the installation instructions. The form is viewable on mobile devices by scanning the QR code or by clicking [HERE](#) if viewing on a PC.

