

# CROSSBAR RAIL KIT



P/N 2889468-XXX, 2889800

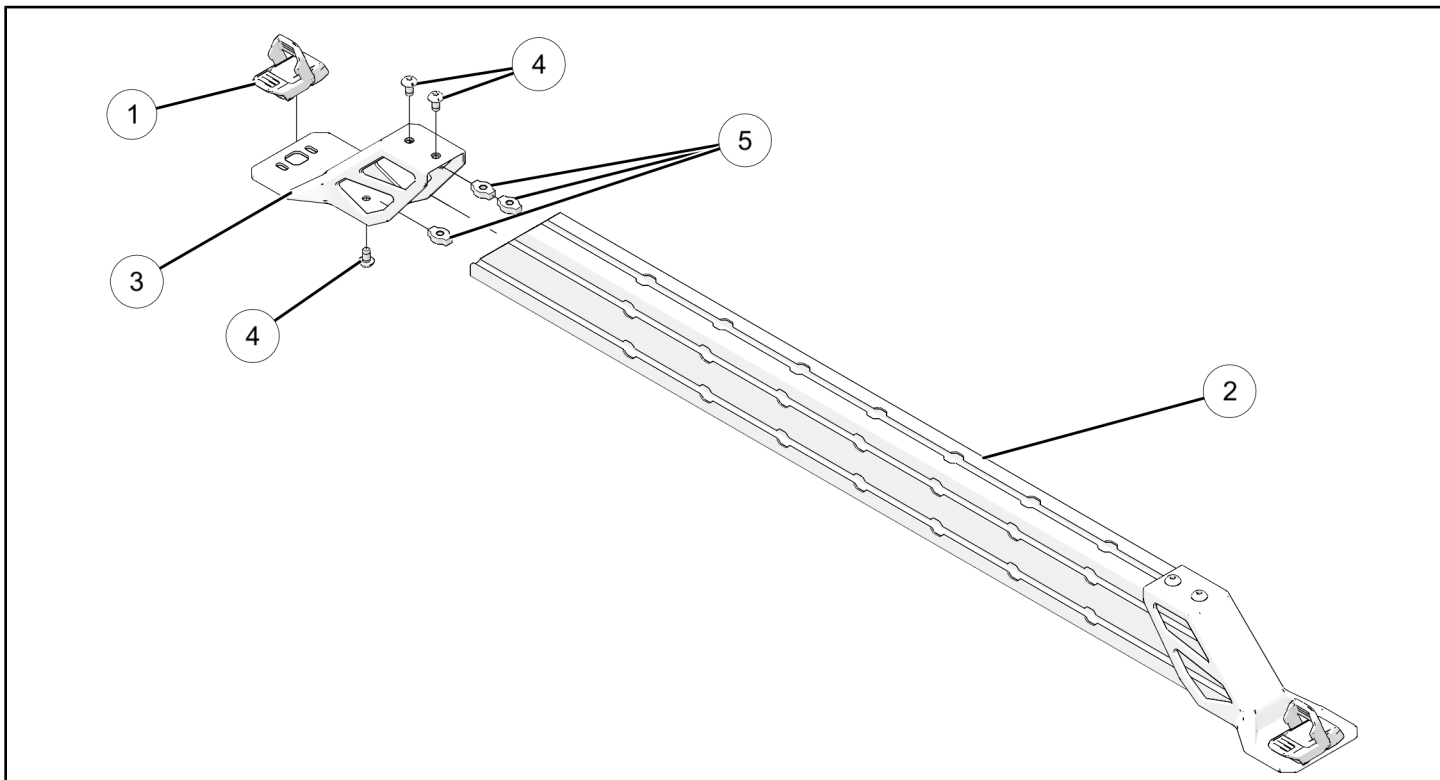
## BEFORE YOU BEGIN

Read these instructions and check to be sure all parts and tools are accounted for. Please retain these installation instructions for future reference and parts ordering information.

## APPLICATION

Verify accessory fitment at [www.polaris.com](http://www.polaris.com).

## KIT CONTENTS



### NOTICE

XXX = Polaris® color code (For example: 458= Black)

REF	QTY	PART DESCRIPTION	P/N AVAILABLE SEPARATELY	AVAILABLE SERVICE KIT
1	2	Lock & Ride MAX® Latching Assembly	2638786	n/a
2	1	Extrusion – Rail (2889468–458) Extrusion – Rail (2889800)	n/a 5511109	n/a n/a
3	2	Mount – Rail	n/a	n/a
4	6	Screw – Torx® Truss Head M8 x 1.25 x 15 mm	7520391	2209275
5	6	Nut – T M8 x 1.25 mm	n/a	2209275

## TOOLS REQUIRED

- Safety Glasses
- Screwdriver Set, Torx®
- Socket Set, Torx® Bit
- Torque Wrench

## IMPORTANT

Your Crossbar Rail Kit is exclusively designed for your vehicle. Please read the installation instructions thoroughly before beginning. Installation is easier if the vehicle is clean and free of debris. For your safety, and to ensure a satisfactory installation, perform all installation steps correctly in the sequence shown.

## INSTALLATION INSTRUCTIONS

### VEHICLE PREPARATION

#### GENERAL

1. Park vehicle on a flat surface.
2. Shift vehicle into PARK.
3. Turn key to OFF position and remove key.

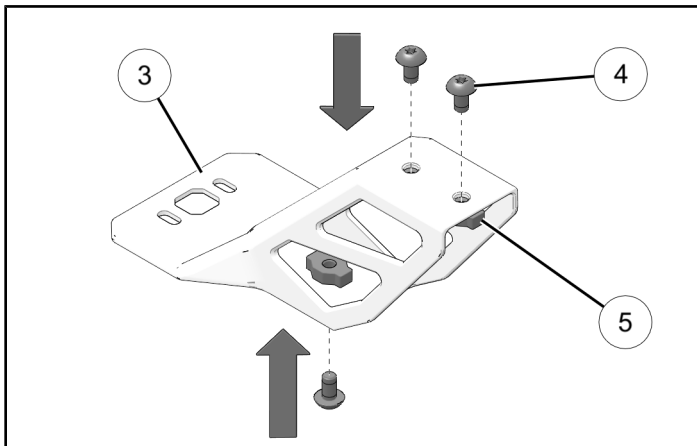
### ACCESSORY INSTALLATION

1. Install screws ④ and t-nuts ⑤ into the rail mount ③.

#### NOTICE

Left side shown, right side similar.

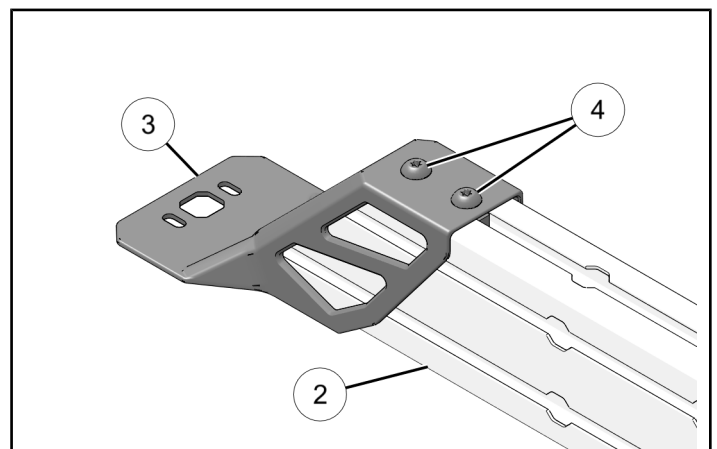
Do not torque screws at this time.



2. Loosely assemble mount ③ to crossbar rail ②. Do not tighten screws ④.

#### NOTICE

Left side shown, right side similar.



3. Install Lock & Ride MAX® latching assembly ① as shown.

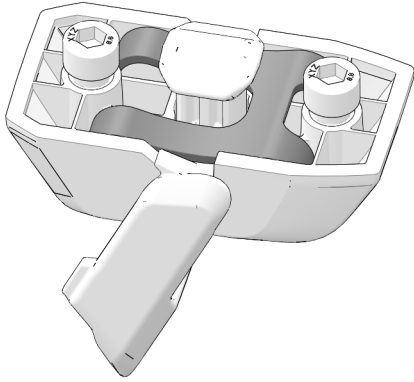
#### NOTICE

Left side shown, right side similar.

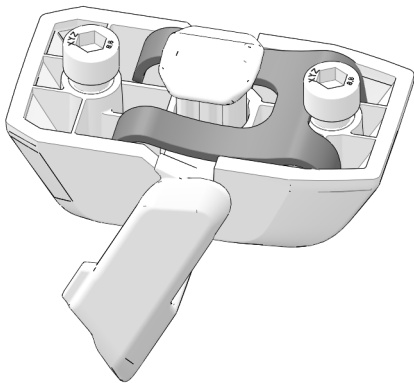
**NOTICE**

Check spring alignment and orientation while installing latching assembly.

- Correct assembly



- Incorrect assembly



4. Torque latching assembly screws to specification.

**NOTICE**

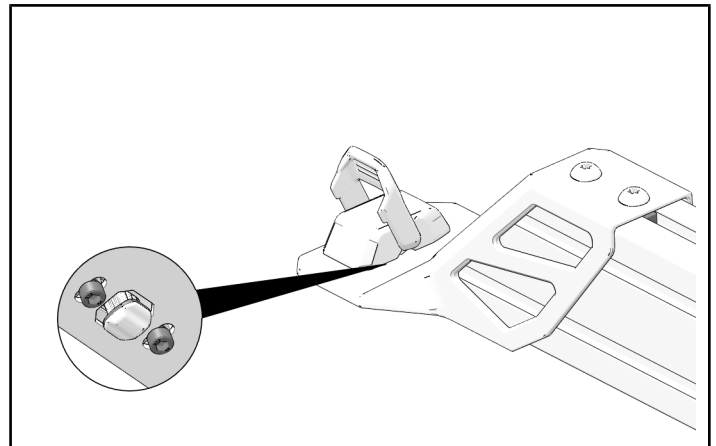
Left side shown, right side similar.

**TORQUE**

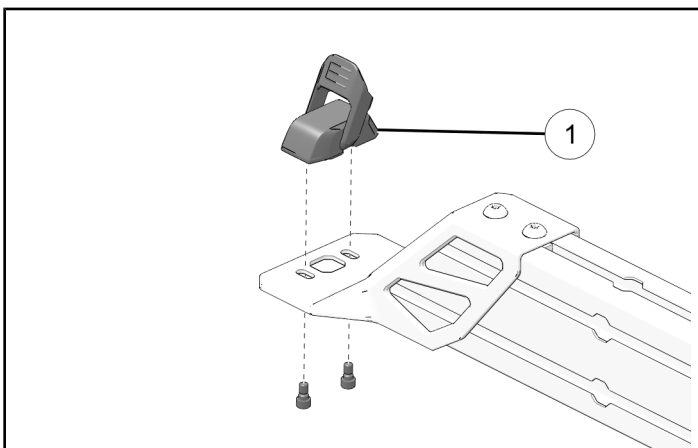
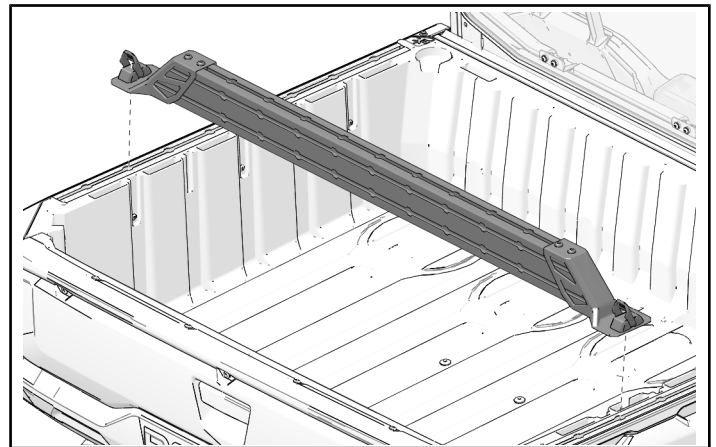
Latching Assembly Screws:  
**44 in-lbs (5 N·m)**

**IMPORTANT**

Re-torque latching assembly screws to specification after initial 100-miles of use. Re-torque screws at 500-mile intervals after initial re-torque.



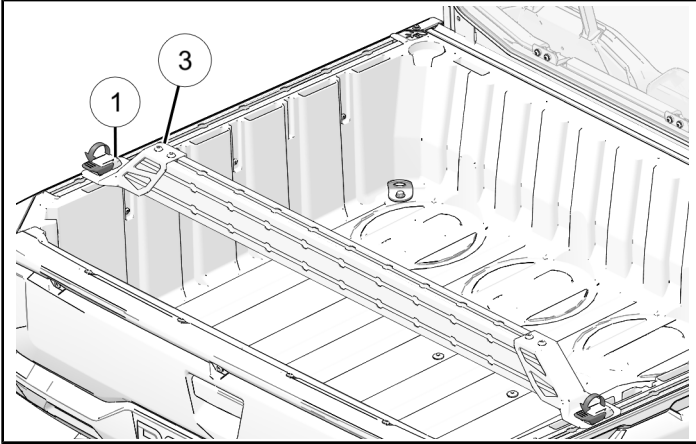
5. Install the crossbar to the rail through the port holes.



- If needed, adjust mounts ③ to match the distance from rail to rail. When the mounts are positioned properly, lock latching assembly ① in place by closing the levers.

### NOTICE

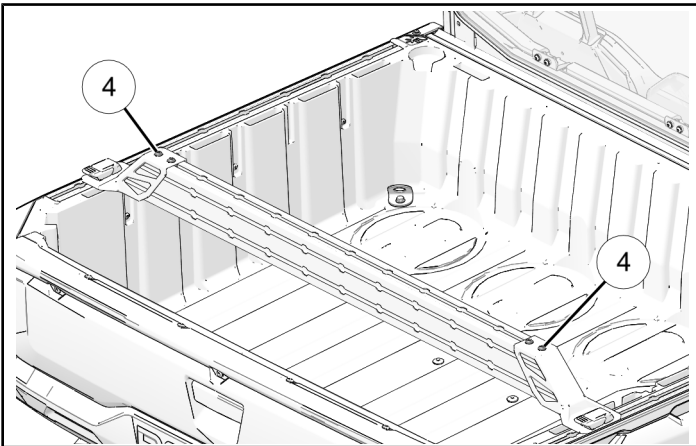
Make sure the latching assembly is fully clear of the port openings in the rail prior to locking in place.



- Torque screws ④ to specification.

### TORQUE

Torx® Screws ④:  
**16 ft-lbs (22 N·m)**



- Re-torque latching assembly screws to specification after initial 100-miles of use. Re-torque screws at 500-mile intervals after initial re-torque.

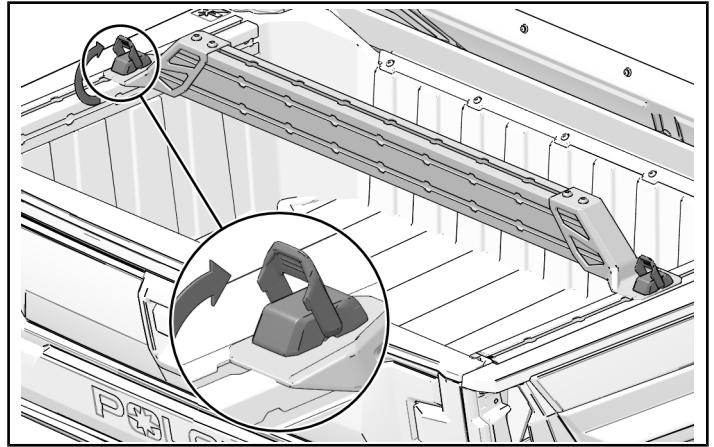
### TORQUE

Latching Assembly Screws:  
**44 in-lbs (5 N·m)**

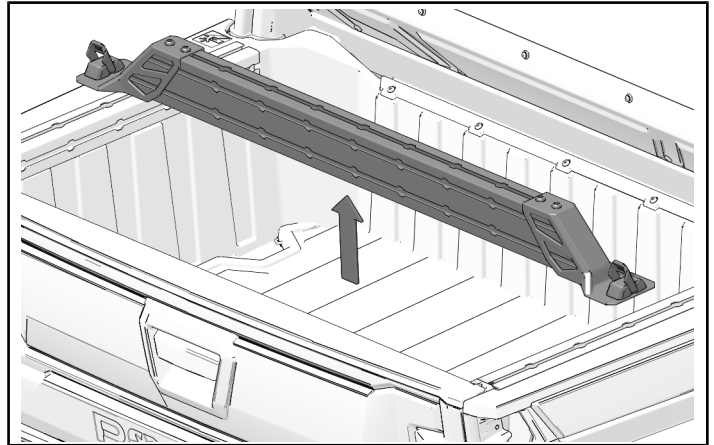
## OPERATION

### RHINO RACK® ACCESSORY INSTALLATION

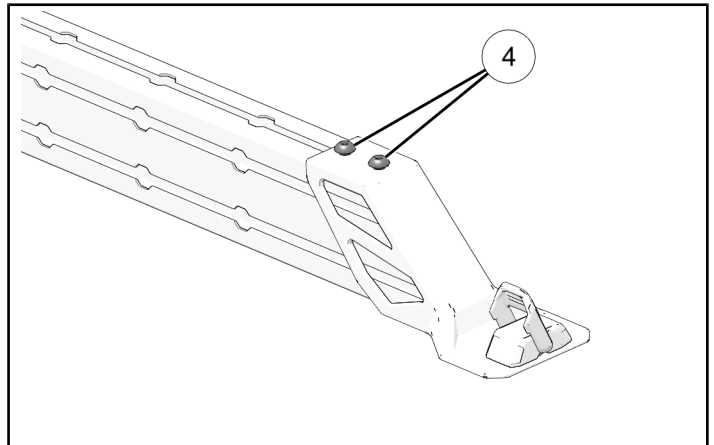
- Lift latches to open both Lock & Ride MAX® latching assemblies.



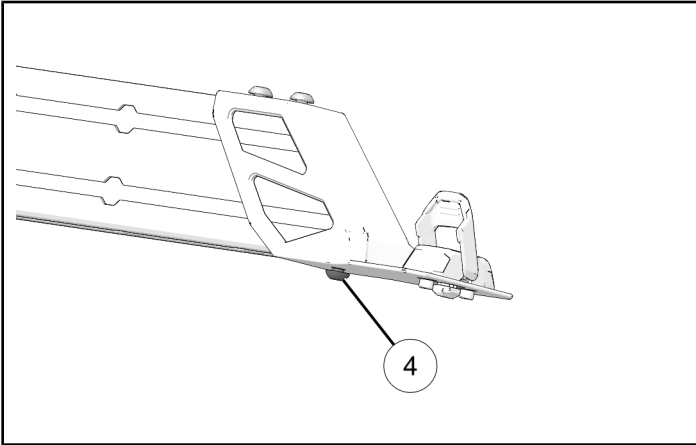
- Remove crossbar from vehicle bed.



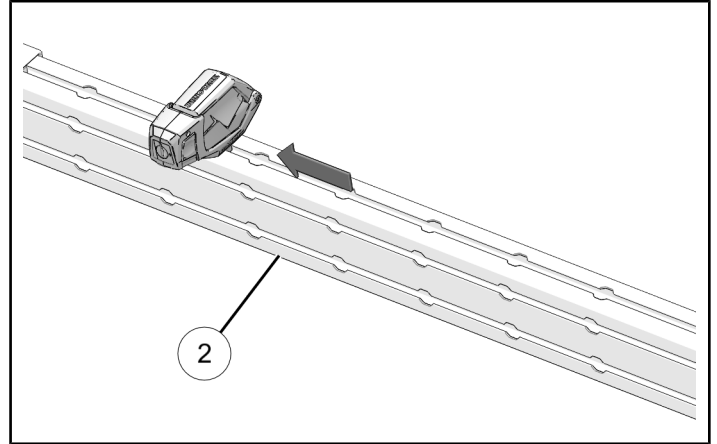
- Loosen two screws ④ on top of rail mount. Do not remove screws from T-nuts in rail.



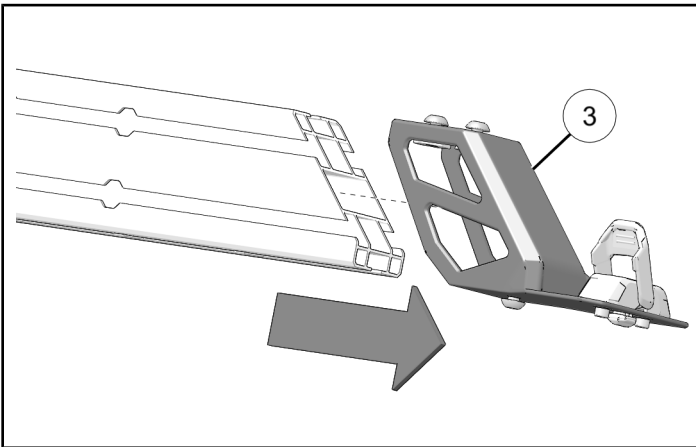
4. Loosen screw ④ on bottom of rail mount. Do not remove screw from T-nut in rail.



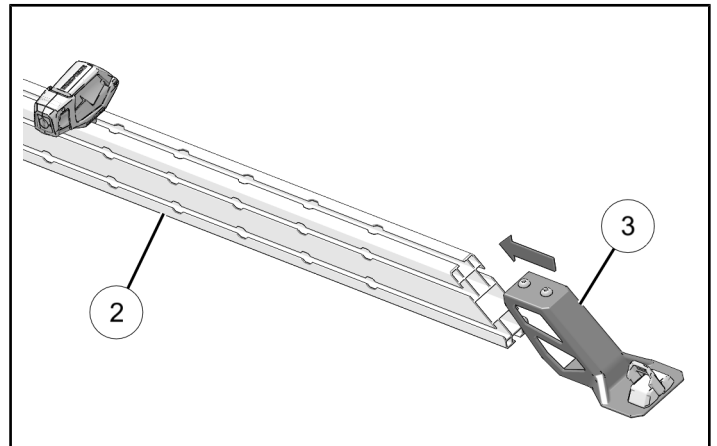
7. Move Rhino Rack® Accessory to desired location. Tighten screw on accessory to hold accessory in desired location.



5. Remove rail mount ③ from crossbar rail.

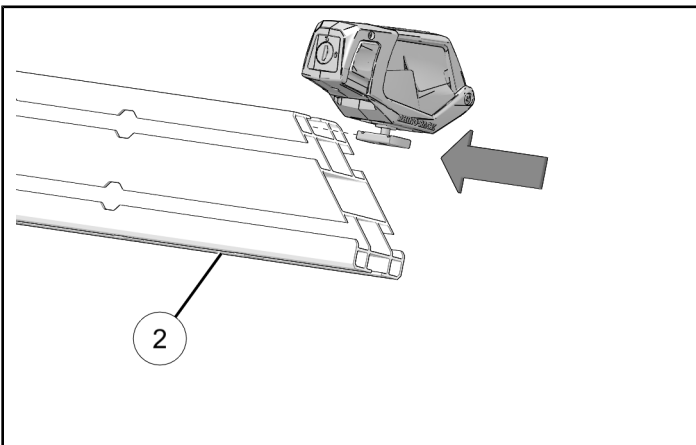


8. Install rail mount ③ on end of rail.



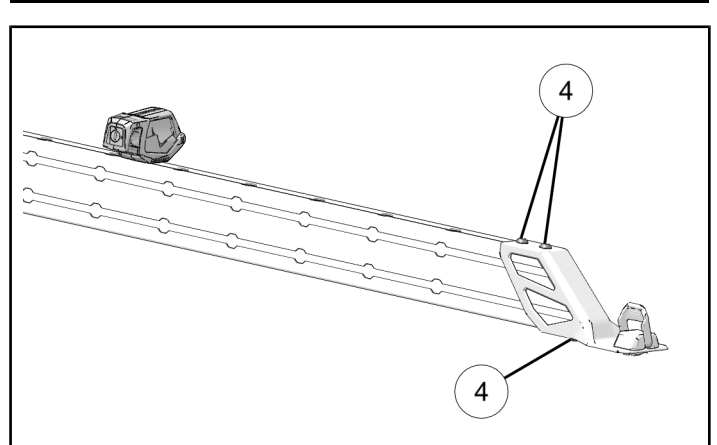
6. Install Rhino Rack® Accessory into desired slot in rail ②.

**NOTICE**  
Multi-Purpose Tool Holder shown, other accessories similar.

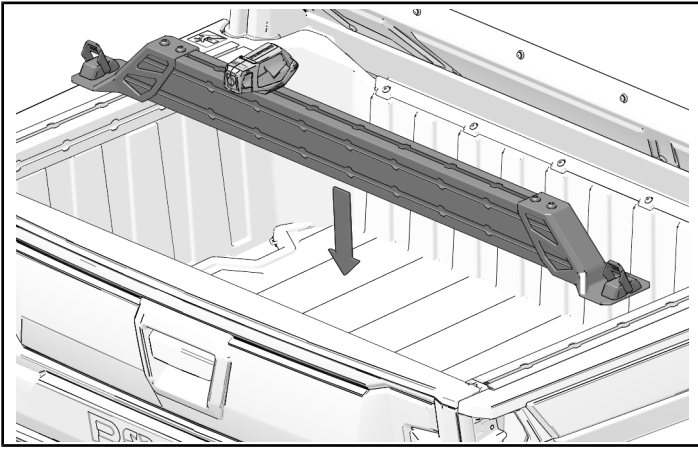


9. Torque screws ④ to specification.

**TORQUE**  
Screws ④:  
**16 ft-lbs (22 N·m)**



10. Install crossbar into vehicle bed.



11. Push down latches to close Lock & Ride MAX® latching assemblies.

