

REAR CARGO BOX KIT



P/N 2884712

MISSING OR DAMAGED PARTS

Before beginning assembly, inspect the kit and its component(s) to be sure all parts and tools are accounted for and not damaged. If missing parts or parts are damaged, please contact your Selling Dealer for assistance.

If your accessory was purchased online, please contact POLARIS® customer service at **1-800-POLARIS** (US & Canada only).

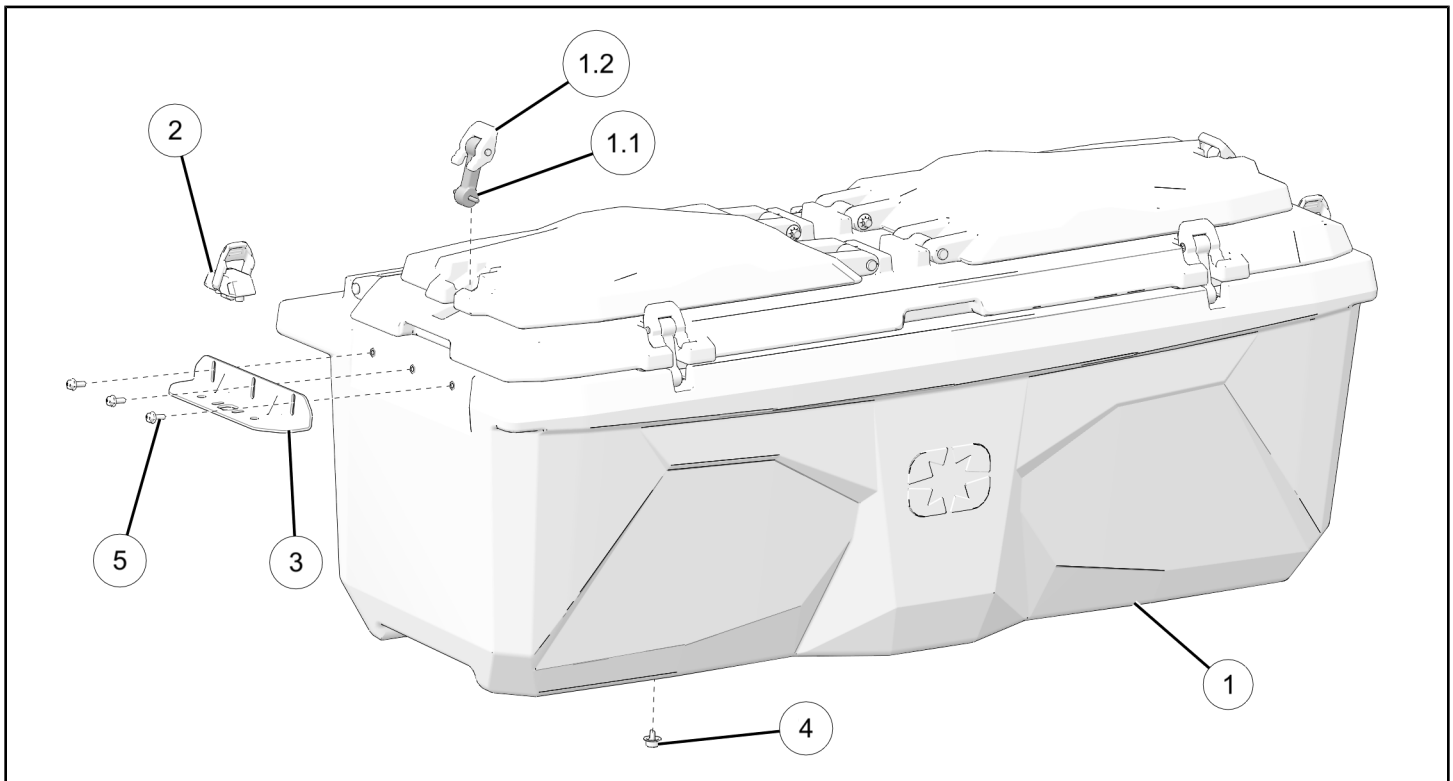
APPLICATION

Verify accessory fitment at www.polaris.com.

IMPORTANT

The Rear Cargo Box Kit is not compatible with Bed Rack Backbone Kit, P/N 2889453.

KIT CONTENTS



REF	QTY	PART DESCRIPTION	P/N AVAILABLE SEPARATELY	AVAILABLE SERVICE KIT
1	1	Cargo Box	n/a	n/a
1.1	4	– Latch Body	n/a	2209215
1.2	4	– Latch Lever	5455631	2209215
2	2	Lock & Ride MAX® Latching Assembly	2638786	2889648
3	2	Mounting Bracket	n/a	n/a

REF	QTY	PART DESCRIPTION	P/N AVAILABLE SEPARATELY	AVAILABLE SERVICE KIT
4	2	Plug	n/a	2209215
5	6	Screw, Hex Flange M6 x 1.0 x 16 mm	n/a	2209215

TOOLS REQUIRED

- Safety Glasses
- Hex Key Set, Metric
- Wrench Set, Metric

IMPORTANT

Your Rear Cargo Box Kit is exclusively designed for your vehicle. Please read the installation instructions thoroughly before beginning. Installation is easier if the vehicle is clean and free of debris. For your safety, and to ensure a satisfactory installation, perform all installation steps correctly in the sequence shown.

INSTALLATION INSTRUCTIONS

VEHICLE PREPARATION

GENERAL

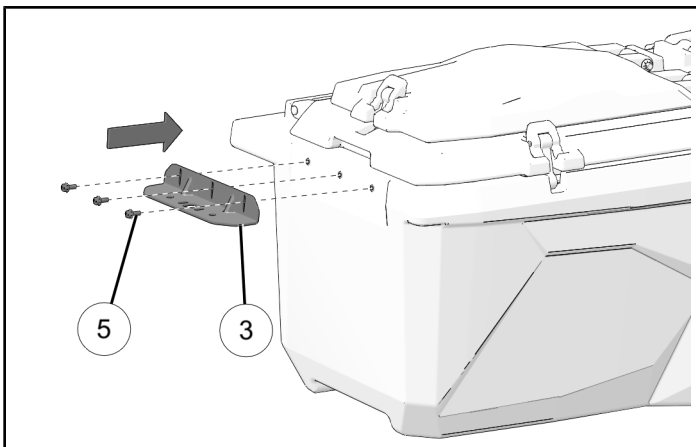
1. Park vehicle on a flat surface.
2. Shift vehicle into PARK.
3. Turn key to OFF position and remove key.

ACCESSORY INSTALLATION

1. Loosely install bracket ③ and three screws ⑤ on each side of cargo box.

DO NOT torque fasteners at this time.

NOTICE
Left side shown; right side similar.



2. Remove two screws from bottom of Lock & Ride MAX® latching assembly ②. Install one latching assembly to each bracket ③ as shown. Torque latching assembly screws to specification.

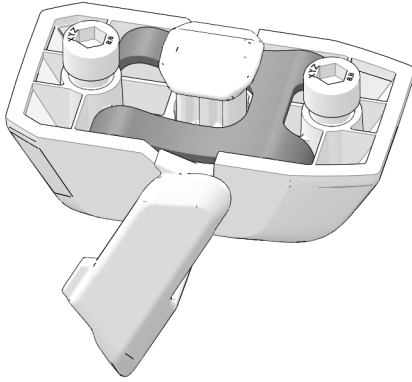
NOTICE
Left side shown; right side similar.

TORQUE
Latching Assembly Screws:
44 in-lbs (5 N·m)

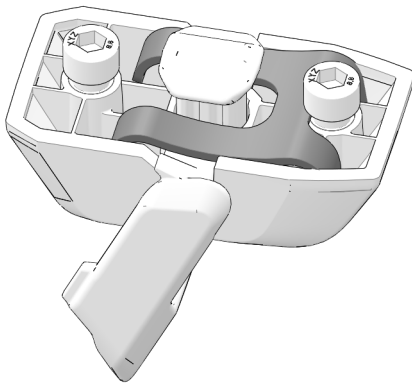
NOTICE

Check spring alignment and orientation while installing latching assembly.

- Correct assembly



- Incorrect assembly



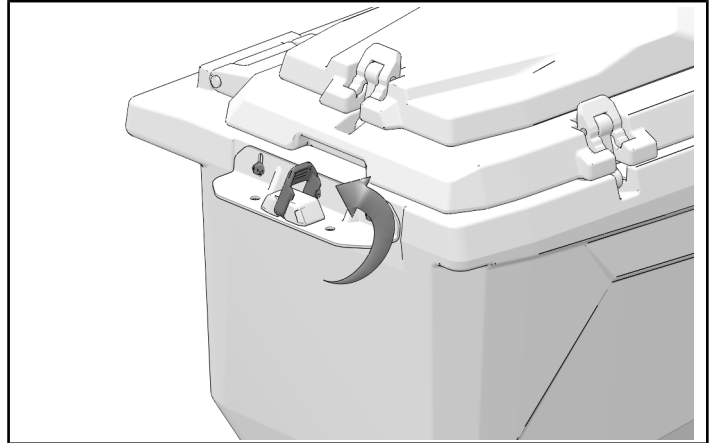
IMPORTANT

Re-torque latching assembly screws to specification after initial 100 miles (160 km) of use. Re-torque screws at 500 miles (800 km) intervals after initial re-torque.

3. Lift lever to open latching assembly.

NOTICE

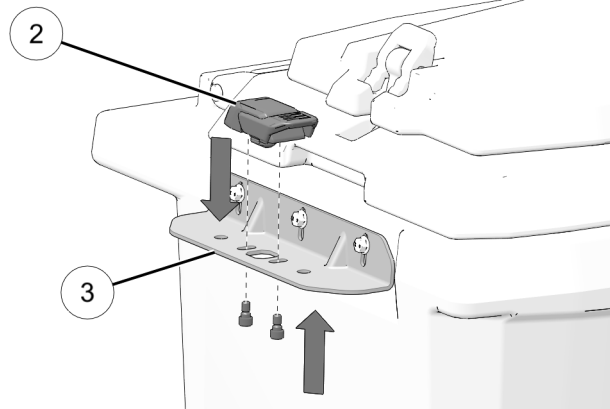
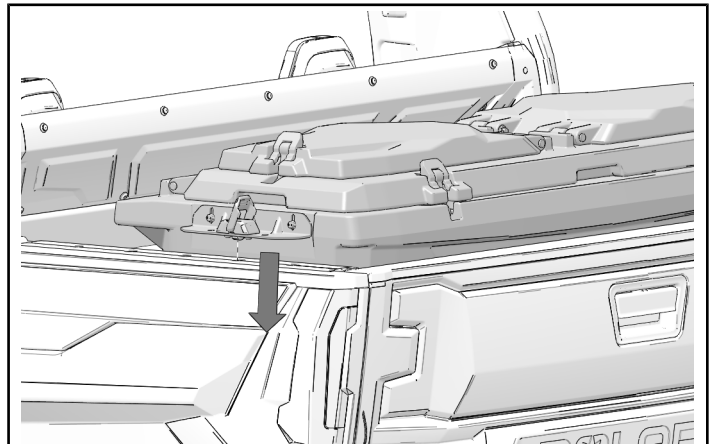
Left side shown; right side similar.



4. Lower cargo box into vehicle bed. Bottom of latching assembly must pass through port hole in bed rail.

NOTICE

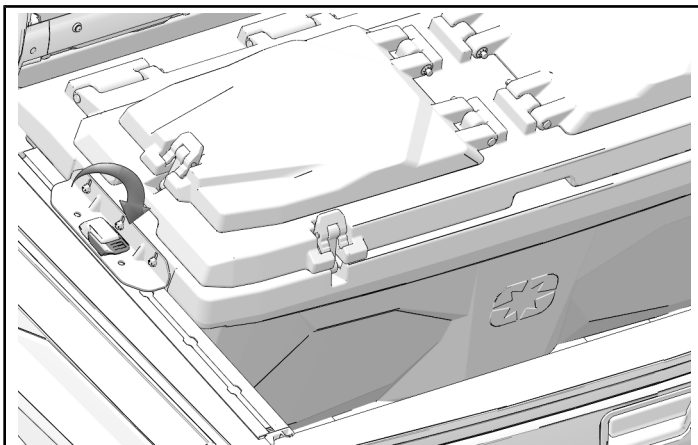
Left side shown; right side similar.



5. Slide cargo box to desired position in bed and close lever.

NOTICE

Left side shown; right side similar.



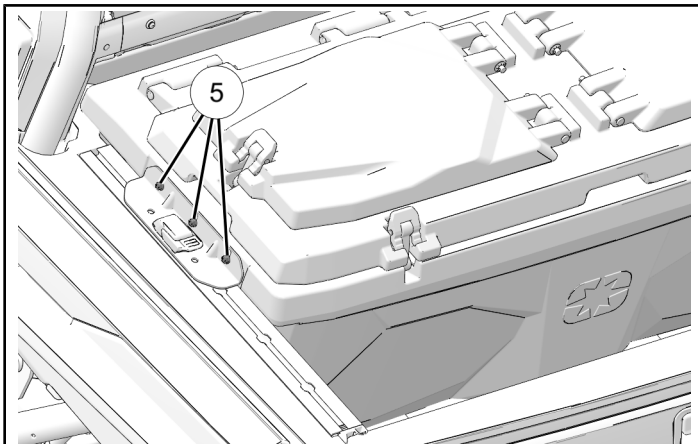
6. Torque screws ⑤ to specification.

NOTICE

Left side shown; right side similar.

TORQUE

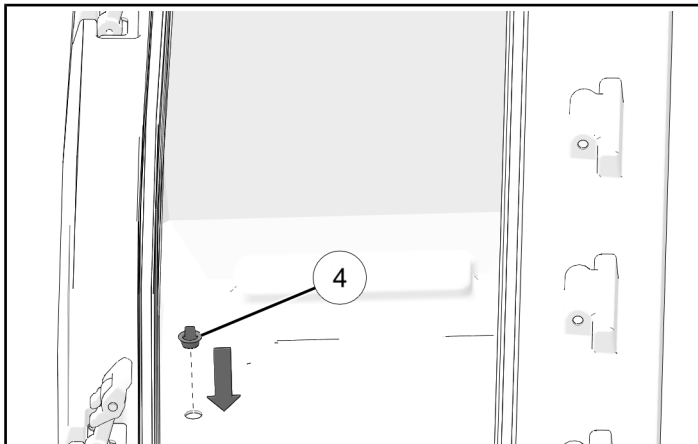
Screws ⑤:
106 in-lbs (12 N·m)



7. Install plugs ④ in bottom of cargo box.

NOTICE

Left side shown; right side similar.



8. Re-torque latching assembly screws to specification after initial 100 miles (160 km) of use. Re-torque screws at 500 miles (800 km) intervals after initial re-torque.

TORQUE

Latching Assembly Screws:
44 in-lbs (5 N·m)

OPERATION

IMPORTANT

Maximum load for cargo box is 100 lb (45 kg), evenly distributed.