

SPARE TIRE RACK KIT



P/N 2889404

BEFORE YOU BEGIN

Read these instructions and check to be sure all parts and tools are accounted for. Please retain these installation instructions for future reference and parts ordering information.

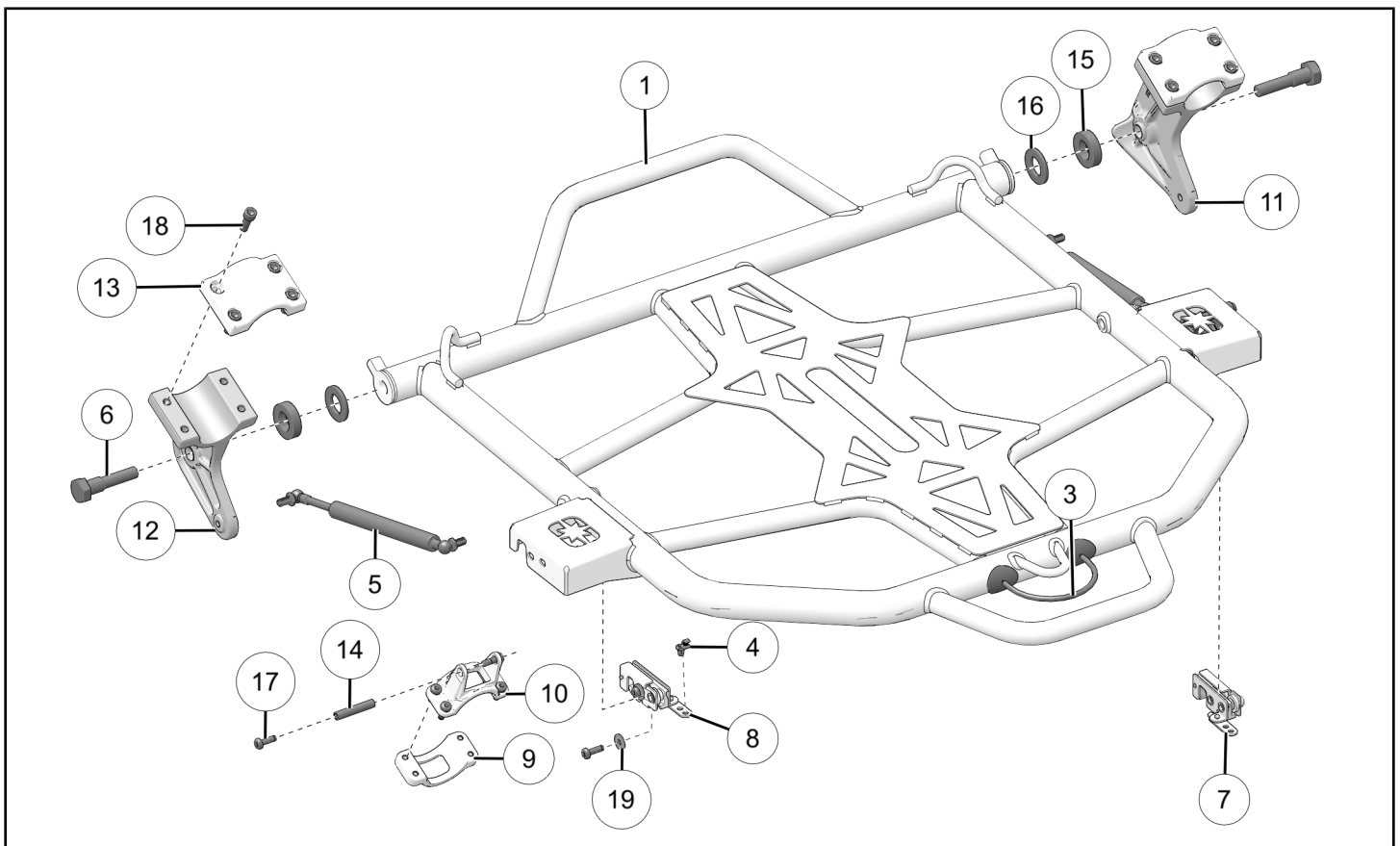
APPLICATION

Verify accessory fitment at www.polaris.com.

ACCESSORY WEIGHT

Accessories, passengers, and other factors may negatively affect ride performance. Refer to your vehicle's owner's manual for maximum weight capacity and suspension adjustment procedures.

KIT CONTENTS



REF	QTY	PART DESCRIPTION	P/N AVAILABLE SEPARATELY	AVAILABLE SERVICE KIT
1	1	Weld-Rack, Spare Tire	n/a	n/a
2	1	Assembly-Strap, Tire (not shown)	2692437	n/a
3	1	Cable-Actuation	7082833	n/a
4	2	Clip-Latch	5454637	n/a
5	2	Strut-Gas	7045596	n/a
6	2	Pin-Pivot, M16	7662453	n/a

REF	QTY	PART DESCRIPTION	P/N AVAILABLE SEPARATELY	AVAILABLE SERVICE KIT
7	1	Latch–Right-Hand	n/a	2209418
8	1	Latch–Left-Hand	n/a	2209418
9	2	Clamp–Striker, Lower	n/a	n/a
10	2	Clamp–Striker, Upper	n/a	n/a
11	1	Pivot–Rack, Spare Tire, Right-Hand	n/a	n/a
12	1	Pivot–Rack, Spare Tire, Left-Hand	n/a	n/a
13	2	Clamp–Pivot	n/a	n/a
14	2	Striker–Threaded	n/a	2209418
15	2	Bushing–Pivot, Wide	n/a	2208697
16	2	Bushing–Pivot	n/a	2208697
17	16	Screw–Torx® Pan Head, M6 x 1.0 x 20 mm	n/a	2208697
18	8	Screw–Socket Head, M8 x 1.25 x 25 mm	n/a	2208697
19	4	Washer– 6.4 x 18 x 1.6 mm	n/a	2208697

TOOLS REQUIRED

- Safety Glasses
- Hammer, Soft Face
- Hex Key Set, Metric
- Screwdriver Set, Torx®
- Socket Set, Hex Bit, Metric
- Socket Set, Metric
- Socket Set, Torx® Bit
- Tape Measure
- Torque Wrench
- Wrench Set, Metric

IMPORTANT

Your Spare Tire Rack Kit is exclusively designed for your vehicle. Please read the installation instructions thoroughly before beginning. Installation is easier if the vehicle is clean and free of debris. For your safety, and to ensure a satisfactory installation, perform all installation steps correctly in the sequence shown.

INSTALLATION INSTRUCTIONS

VEHICLE PREPARATION

GENERAL

1. Park vehicle on a flat surface.
2. Shift vehicle into PARK.
3. Turn key to OFF position and remove key.

ACCESSORY INSTALLATION

STRIKER CLAMP INSTALLATION

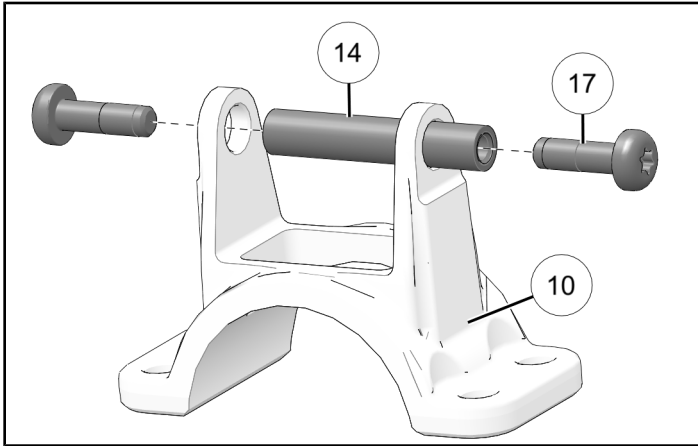
NOTICE

Left striker clamp shown; right striker clamp similar.

1. Install striker rod ⑭ to upper striker clamp ⑩ with two fasteners ⑰.

TORQUE

Striker Fasteners ⑰:
9 ft-lbs (12 N·m)

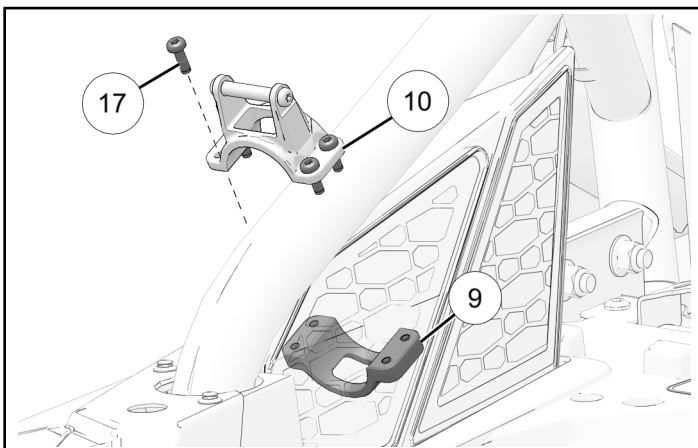


2. Install bottom striker clamp ⑨ to top striker clamp ⑩ and four fasteners ⑰.

Do not torque fasteners at this time.

TIP

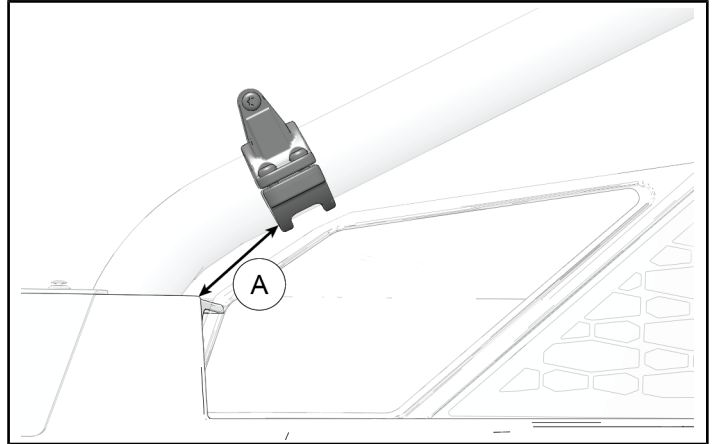
Striker clamp assembly should be loose enough that it can be repositioned with soft face hammer, if needed.



3. Position striker clamp assembly before tube begins to bend. Use measurement for reference. Hand-tighten fasteners further, if needed.

MEASUREMENT

Reference Measurement (A):
2-3/4 in (70 mm)



PIVOT BRACKET INSTALLATION

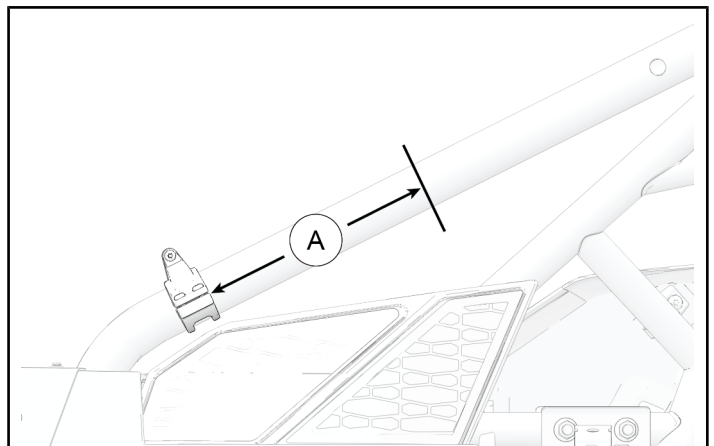
NOTICE

Left pivot bracket shown; right pivot bracket similar.

1. Measure 10-1/4 in (260 mm) from inside face of striker bracket and mark ROPS with a marker for clamp placement.

MEASUREMENT

Reference Measurement (A):
10-1/4 in (260 mm)

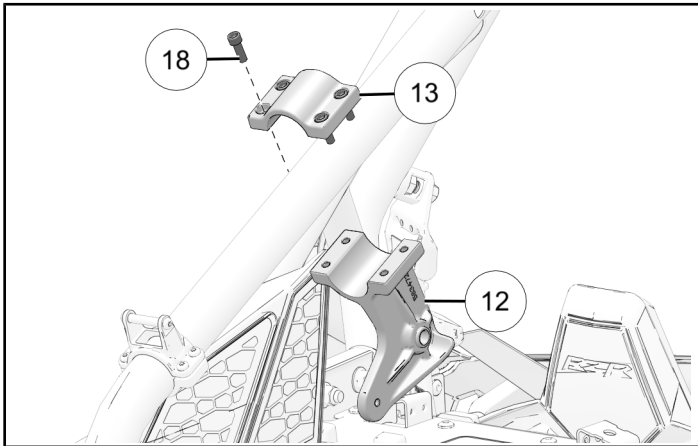


2. Install pivot clamp ⑫ with top clamp ⑬ and four fasteners ⑱.

Do not torque fasteners at this time.

TIP

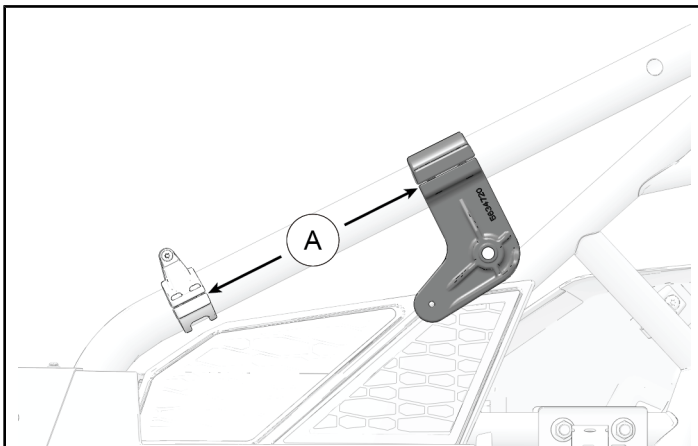
Pivot bracket assembly should be loose enough that it can be repositioned with soft face hammer, if needed.



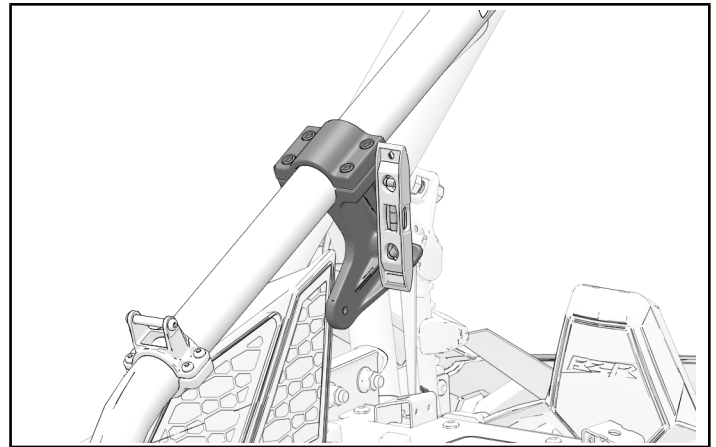
3. Verify positioning.

MEASUREMENT

Reference Measurement (A):
10-1/4 in (260 mm)



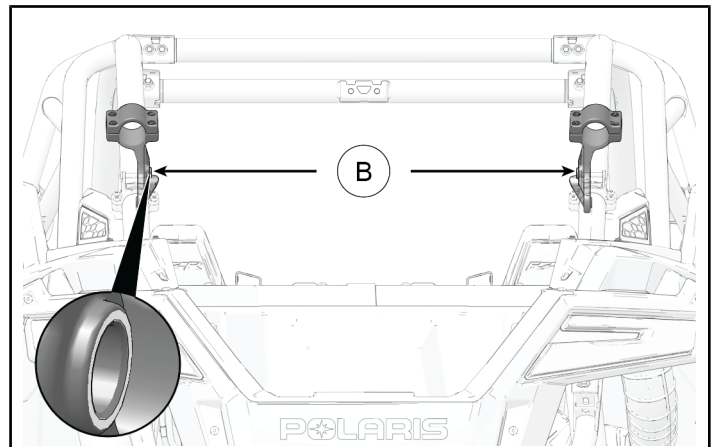
4. Make sure pivot brackets are plumb.



5. Make sure pivot clamp assemblies are correctly spaced apart, according to measurement below. Measure from pivot pin hole to pivot pin hole.

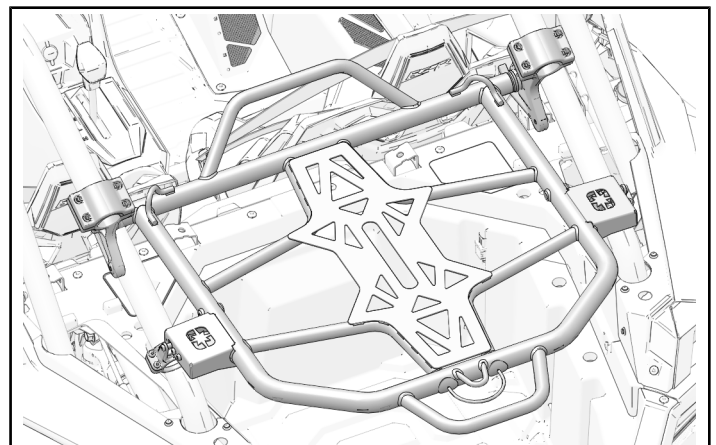
MEASUREMENT

Reference Measurement (B):
31-11/16 in (805 mm)



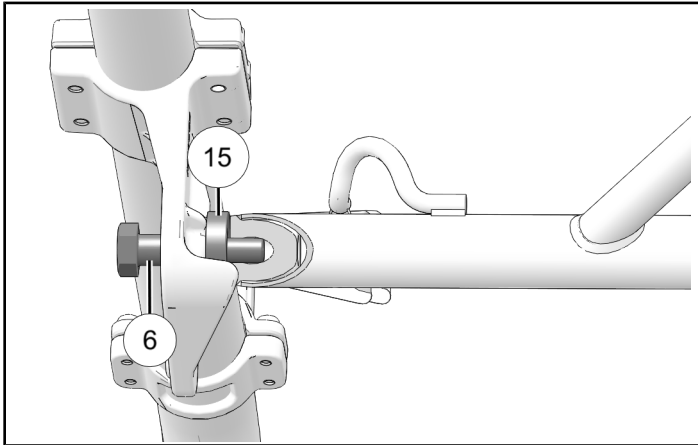
TIRE RACK INSTALLATION

1. With an assistant, lift tire rack into bed of vehicle. Rest latches onto striker brackets for proper alignment and tap pivot brackets into place, against tire rack.



2. Install pivot pins ⑥ through bracket, bushing ⑮ or ⑯, and into tire rack.

TIP	
Bushing Configuration	
Two Passenger	Wide Bushing ⑮
Multi-Passenger	Thin Bushing ⑯



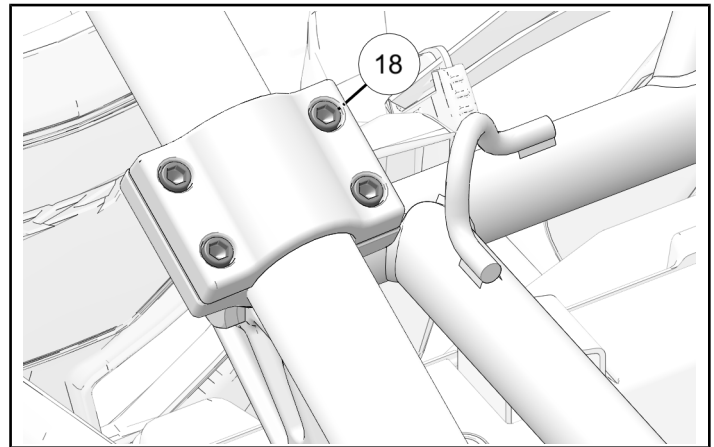
3. Tap pivot bracket into tire rack, with a soft face hammer, to make sure bushing fills gap between pivot bracket and tire rack. Torque pivot pins ⑥ to specification.

TORQUE
Pivot Pins ⑥: 60 ft-lbs (81 N·m)

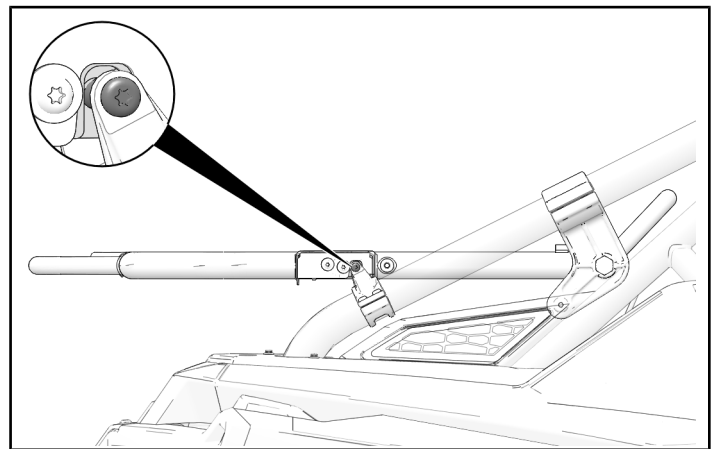
4. Tighten pivot bracket clamp fasteners ⑱ to specification.

TIP
Tap pivot bracket again with soft face hammer if a gap remains.

TORQUE
Pivot Bracket Fasteners ⑱: 18 ft-lbs (25 N·m)



5. When tire rack is lowered, latches should hit strikers simultaneously. Adjust accordingly in following steps.

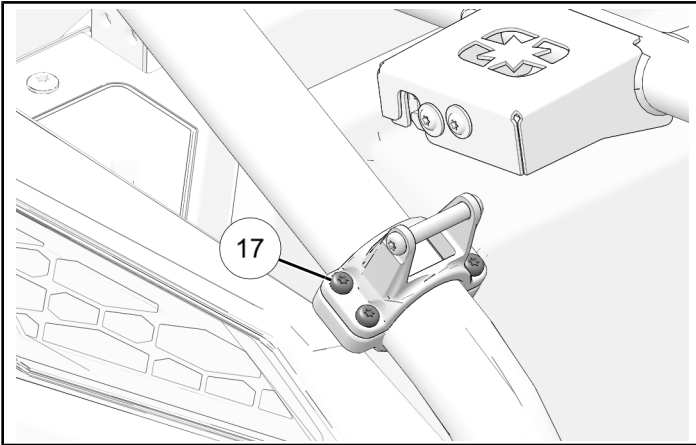


6. Adjust striker clamps to meet the following requirements:
 - Striker clamps are at equal height with one another
 - Striker clamps are aligned straight in line with ROPS tubes
 - Latch must fully engage striker rod when tire rack is lowered

7. Tighten striker clamp fasteners ⑰ to specification.

TORQUE

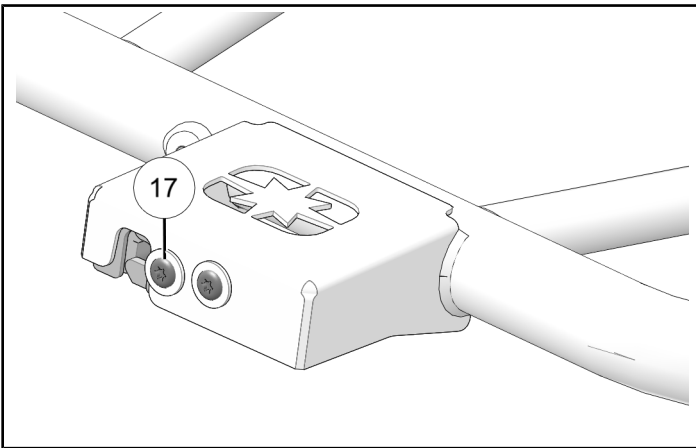
Striker Clamp Fasteners ⑰:
9 ft-lbs (12 N·m)



8. Torque latch fasteners ⑰ to specification.

TORQUE

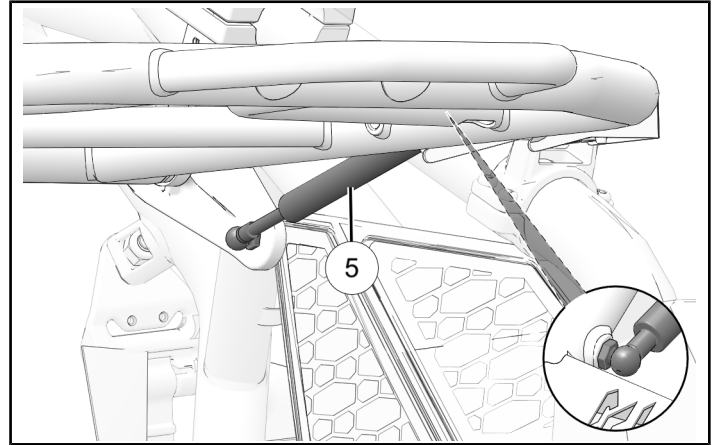
Latch Fasteners ⑰:
9 ft-lbs (12 N·m)



9. Install each strut ⑤ onto tire rack and pivot bracket.

TIP

Install with push rod facing downward.



OPERATION

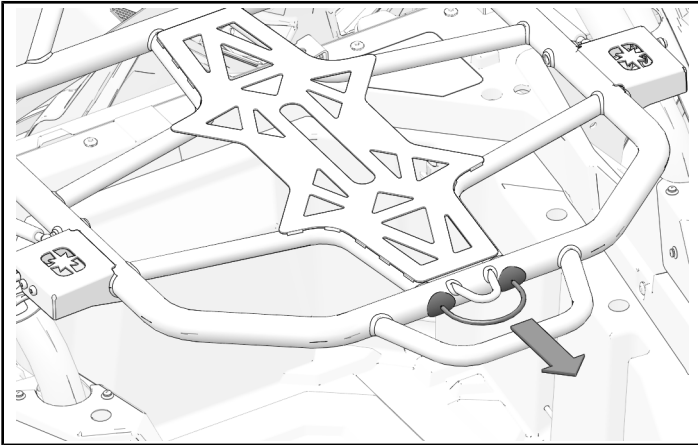
LATCH OPERATION

UNDER LOAD

Pull actuator cable rearward to simultaneously release latches from strikers.

NO LOAD

Apply downward pressure to spare tire rack and pull actuator cable rearward to simultaneously release latches from strikers.

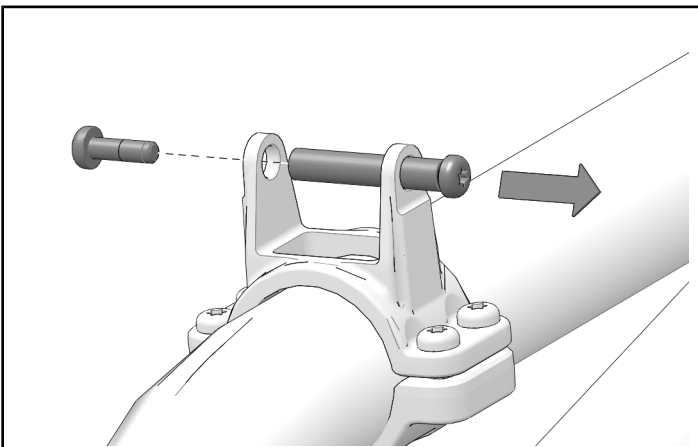


SERVICE

STRIKER REPLACEMENT

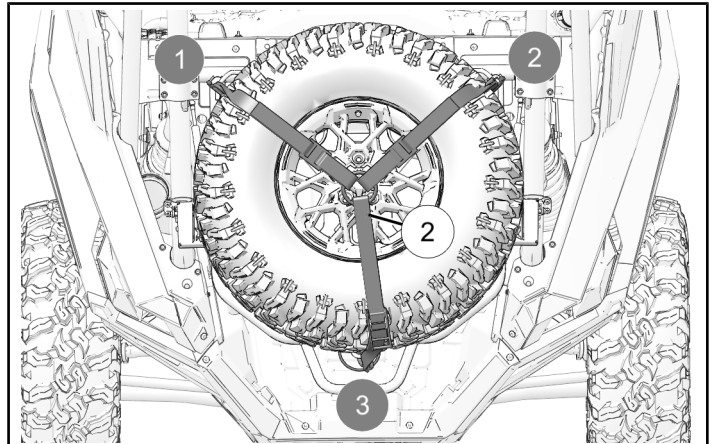
Striker rod wears with use. Reference *Kit Contents* for the appropriate service kit.

1. Counter-hold one screw and loosen opposite screw until striker rod can be removed. Retain screws; discard striker rod.



SECURING SPARE TIRE

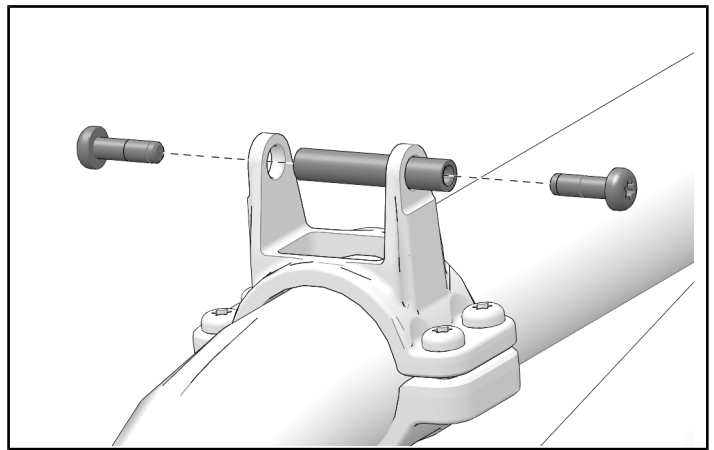
Secure spare tire onto rack using 3-point tire strap ②.



2. Install striker rod to upper striker clamp with two retained fasteners.

TORQUE

Striker Screws:
9 ft-lbs (12 N·m)

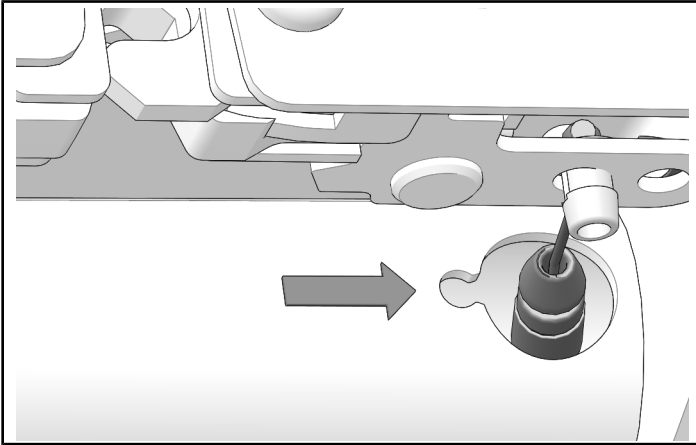


LATCH REPLACEMENT

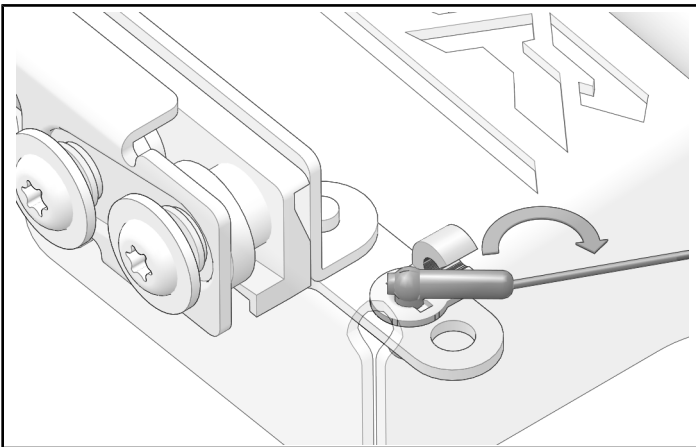
Latch mechanism wears with use. Reference *Kit Contents* for the appropriate service kit.

LATCH REMOVAL

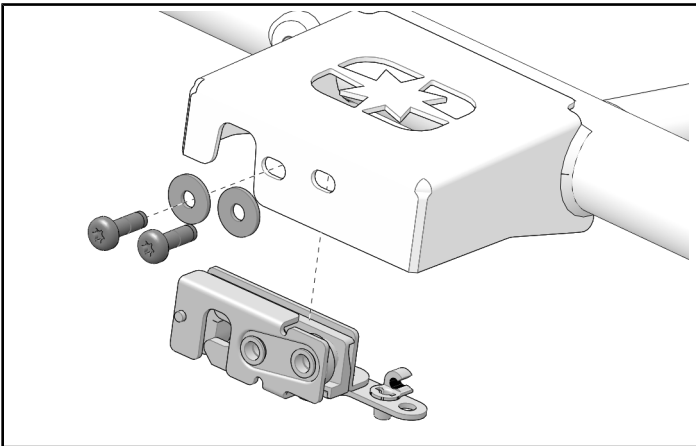
1. Remove actuator cable from notch in tire rack.



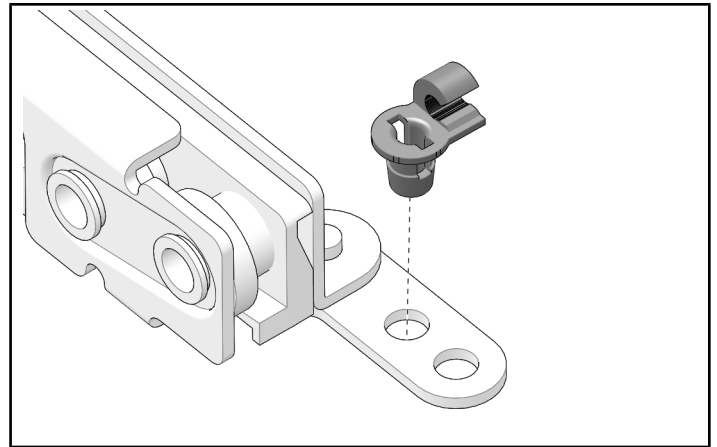
2. Rotate actuator cable out of clip and remove from latch assembly.



3. Remove and keep two screws to remove latch. Discard latch.

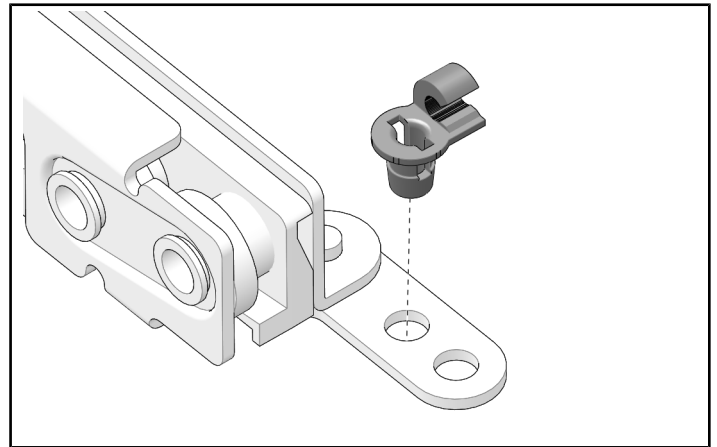


4. Remove and keep actuator cable clip from latch.



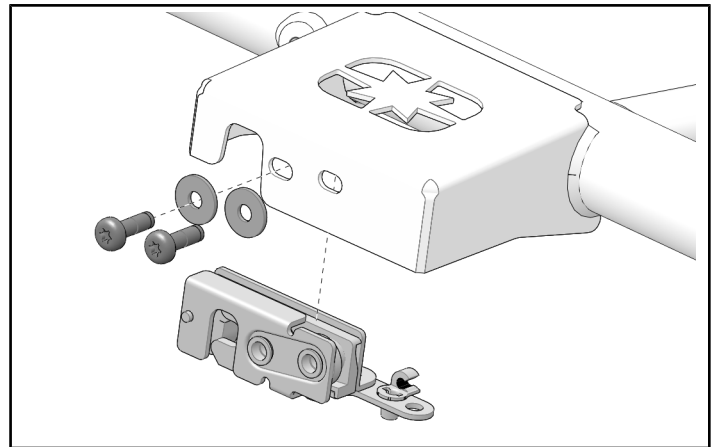
LATCH INSTALLATION

1. Install actuator cable clip into new latch.

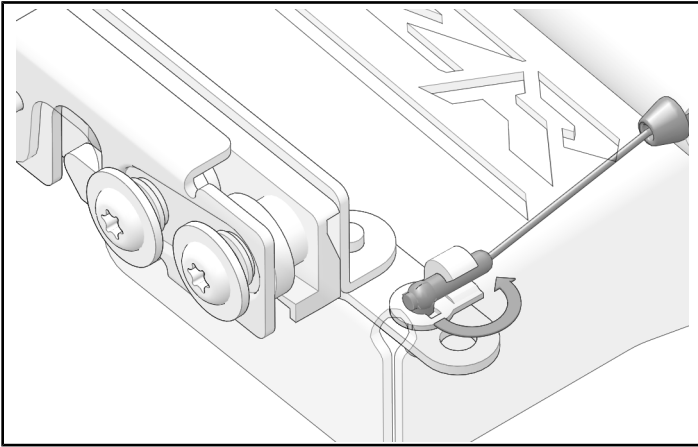


2. Loosely install new latch with two retained screws.

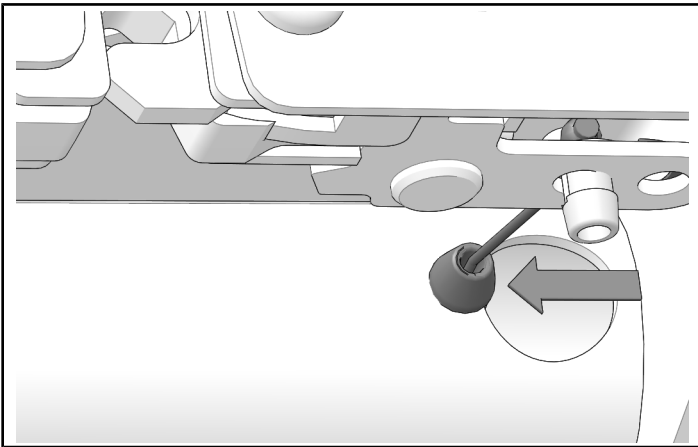
Do not torque screws at this time.



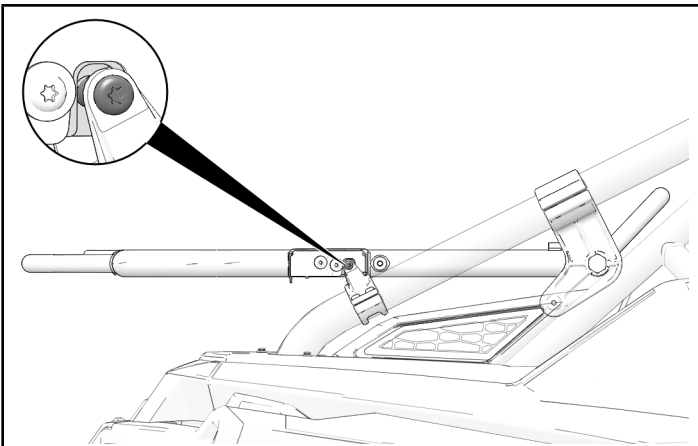
3. Put end of actuator cable into clip and rotate into clip.



4. Push actuator cable into notch of tire rack.

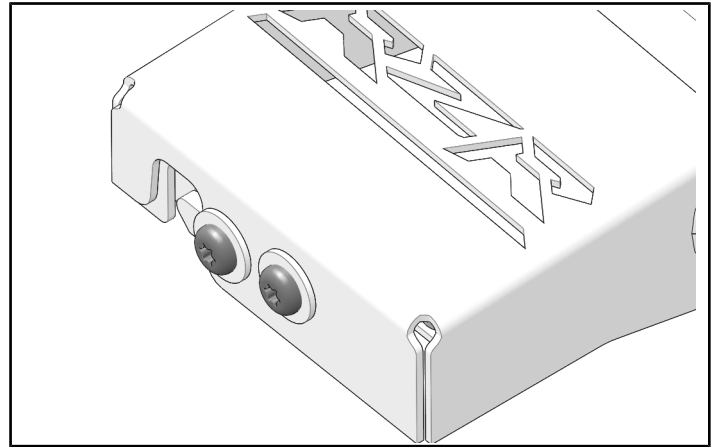


5. When tire rack is lowered, latches should hit strikers simultaneously.



6. Torque latch screws to specification.

TORQUE
Latch Screws:
9 ft-lbs (12 N·m)



INSTRUCTION FEEDBACK FORM

A feedback form has been created for the installer to provide any comments, questions or concerns about the installation instructions. The form is viewable on mobile devices by scanning the QR code or by clicking [HERE](#) if viewing on a PC.

