

GLACIER® HD PLOW FRAME KIT



P/N 2889307

BEFORE YOU BEGIN

Read these instructions and check to be sure all parts and tools are accounted for. Please retain these installation instructions for future reference and parts ordering information.

APPLICATION

Verify accessory fitment at www.Polaris.com.

REQUIRED SOLD SEPARATELY

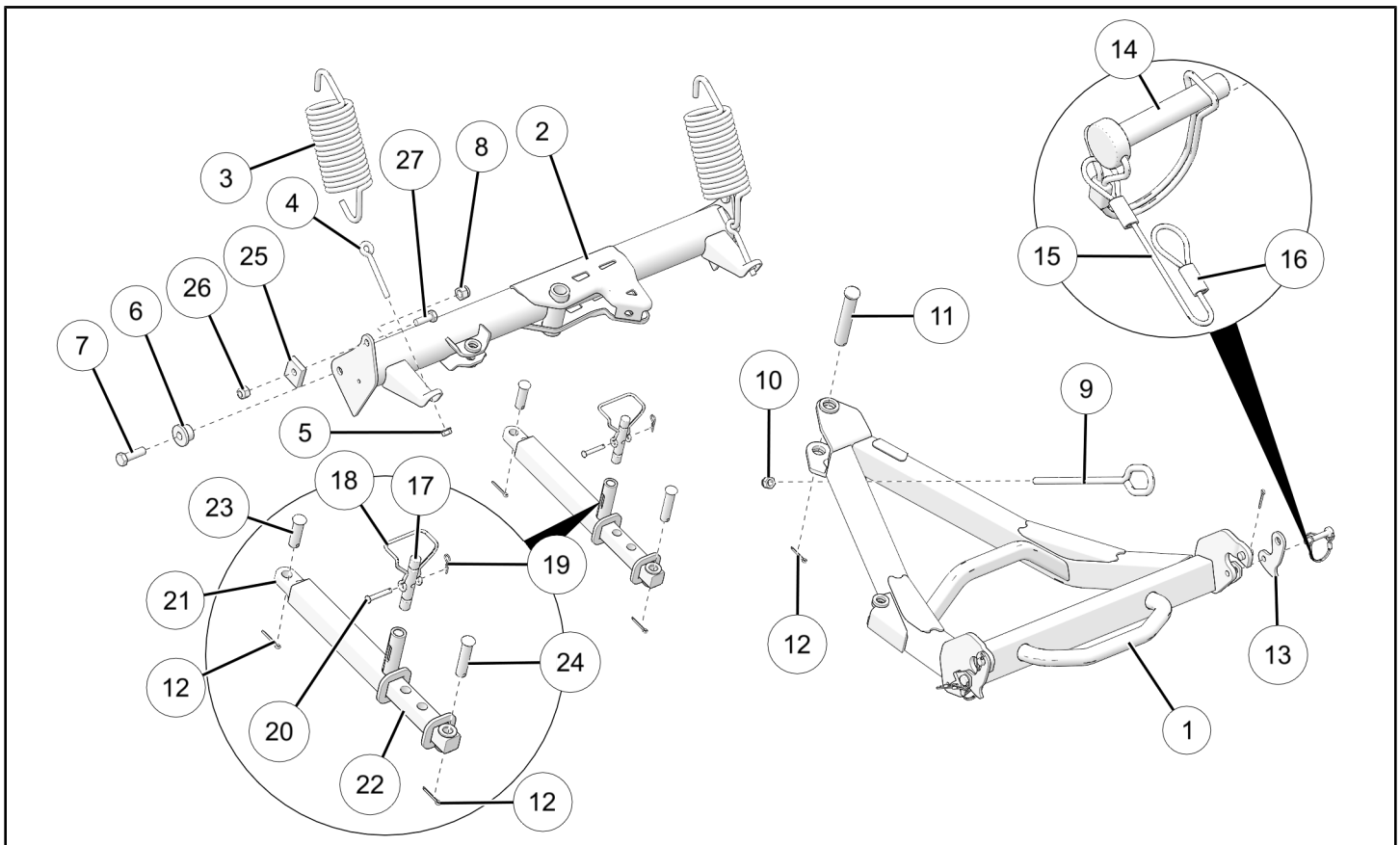
Only parts for installation of the Glacier® HD Plow Frame Kit are included. Prior installation of the following additional kits are also required (sold separately):

- *Winch Kit or Hydraulic Lift Kit*

Only parts for installation of the Glacier® HD Plow Frame Kit are included. For complete installation, some of the following kits are also required (sold separately):

- *Mount Kit* (If applicable, see the *RANGER®* accessory catalog or website for requirements).
- *Plow Blade Kit* See the *RANGER®* accessory catalog or website for requirements.

KIT CONTENTS



REF	QTY	PART DESCRIPTION	PART NUMBER	INCLUDED IN SERVICE KIT
1	1	Weld - Frame	N/A	N/A
2	1	Weld - Blade Support	N/A	N/A
3	2	Trip Spring	N/A	2205382
4	2	Eyebolt - M8 x 1.25 mm	N/A	2207190
5	2	Nut, Locking - M8 x 1.25 mm	N/A	2207190
6	2	Pivot Sleeve	N/A	2207190
7	2	Bolt, Pivot Sleeve - M12 x 1.75 x 40 mm	N/A	2207190
8	2	Nut, Locking - M12 x 1.75 mm	N/A	2207190
9	1	Winch Link	N/A	2207385
10	1	Nut, Locking - M10 x 1.5 mm	N/A	2207385
11	1	Clevis Pin, 20 x 115 mm	N/A	2207190
12	4	Cotter Pin	N/A	2207190 2207384 2207385
13	2	Lock Plate	N/A	2207385
14	2	Lock Pin	N/A	2207385
15	2	Lanyard	N/A	2207385
16	2	Lanyard Choke	N/A	2207385
17	1	Shear Pin	N/A	2205527
18	11	Handle, Shear Pin	N/A	2207384
19	1	Retaining Clip, Clevis Pin	N/A	2207384
20	1	Clevis Pin	N/A	2207384
21	1	Outer Tube, Angling	N/A	2207384
22	1	Slide Bar	N/A	2207384
23	1	Clevis Pin, 14 x 45 mm	N/A	2207384 2207190
24	1	Clevis Pin, 14 x 60 mm	N/A	2207384 2207190
25	2	Blade Adjuster Block	N/A	2877504
26	2	Nut, Locking - M10 x 1.5 mm	N/A	N/A
27	2	Bolt, M10 x 1.5 x 30 mm	N/A	N/A

TOOLS REQUIRED

- Safety Glasses
- Pliers, Needle Nose
- Wrench Set, Metric
- Socket Set, Metric

IMPORTANT

Your Glacier® HD Plow Frame Kit is exclusively designed for your vehicle. Please read the installation instructions thoroughly before beginning. Installation is easier if the vehicle is clean and free of debris. For your safety, and to ensure a satisfactory installation, perform all installation steps correctly in the sequence shown.

INSTALLATION INSTRUCTIONS

VEHICLE PREPARATION

GENERAL

1. Park vehicle on a flat surface.
2. Shift vehicle into PARK.
3. Turn key to OFF position and remove key.

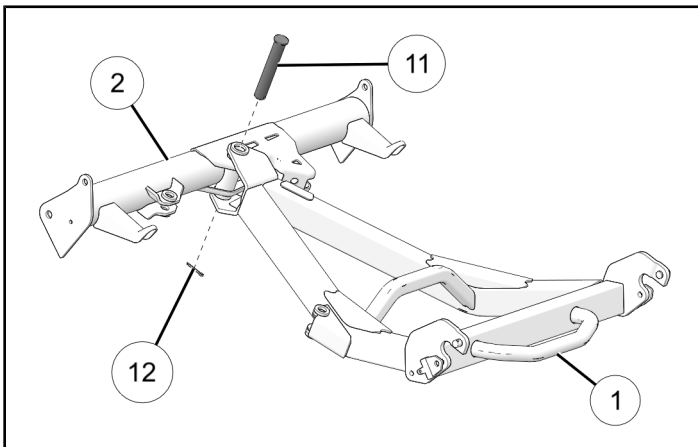
ACCESSORY INSTALLATION

IMPORTANT

The use of a Pro HD 4500 lb. winch or a Polaris winch with the combination of Pro HD auto-stop and synthetic winch rope are recommended for use with this plow system to prevent premature failure of the winch cable. The winch should be installed on the vehicle prior to installing this kit.

PIVOT ASSEMBLY

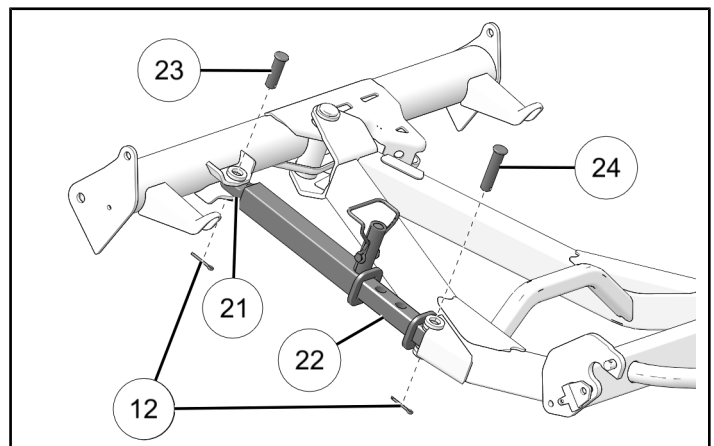
1. Position the main frame ① to the center of the plow pivot ②.



2. Insert the clevis pin ⑪ of the plow pivot from top down through the center pivot and secure by placing the cotter pin ⑫ through the hole at the bottom of the pin.

MANUAL ANGLE MECHANISM ASSEMBLY

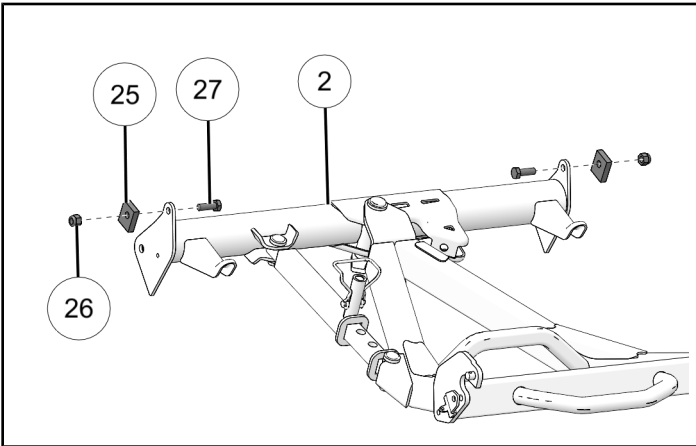
1. Position the rear pivot ⑳ of the manual angle mechanism in the main plow frame bracket as indicated.



2. Align the holes and install the clevis pin ⑳. Once in place, insert the cotter pin ⑫ and fold both ends so that it cannot be removed.
3. Position the front pivot ㉑ of the manual angle mechanism in the plow pivot bracket as indicated in the figure.
4. Align the holes and install the clevis pin ㉓. Insert the cotter pin ⑫ and fold both ends so that it cannot be removed to secure the parts in place.

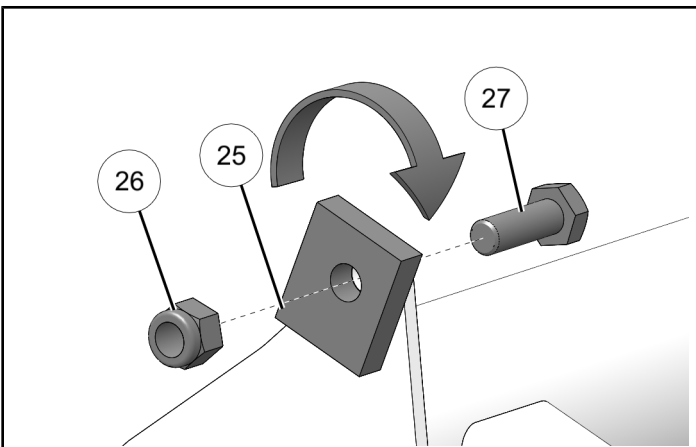
BLADE ADJUSTER BLOCK ASSEMBLY

1. Install the blade adjuster block (25), nut (26), and bolt (27) on each side of the plow pivot (2).



NOTICE

You can rotate each blade adjuster block (25) to adjust the blade stop location.



2. Make sure both blade adjuster blocks are mounted in the same position. Tighten until fully seated.

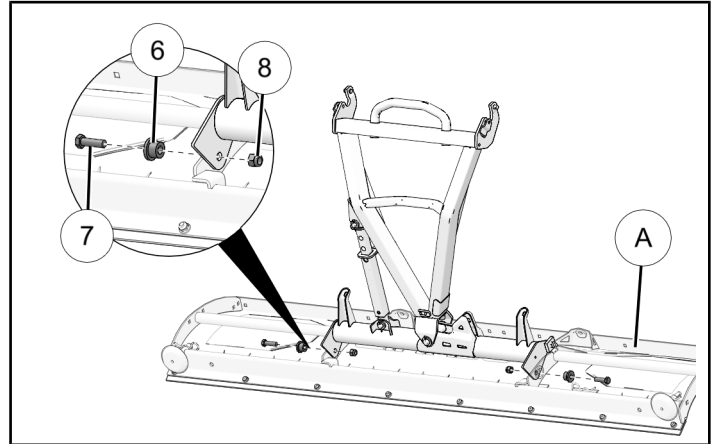
PLOW ASSEMBLY INSTRUCTIONS

1. Place the plow (A) on the ground with the rear of the blade facing up.

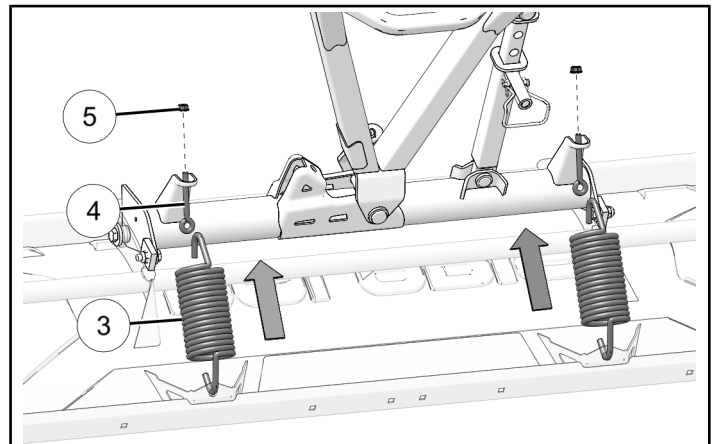
NOTICE

Take care to lay the blade on a clean surface to avoid damaging the blade during installation. Use the blade packaging to protect the blade during this step if possible.

2. Align the mounting holes in the plow pivot with the mounting holes in the blade as indicated in the illustration.



3. Install the two flange sleeves (6) into the holes of the plow with the two hex bolts (7) and tighten the self-locking nuts (8).
4. Hook one end of a plow spring (3) to plow upper holes and fix the other end to the plow pivot using the supplied two eye bolts (4) and two self-locking nuts (5).

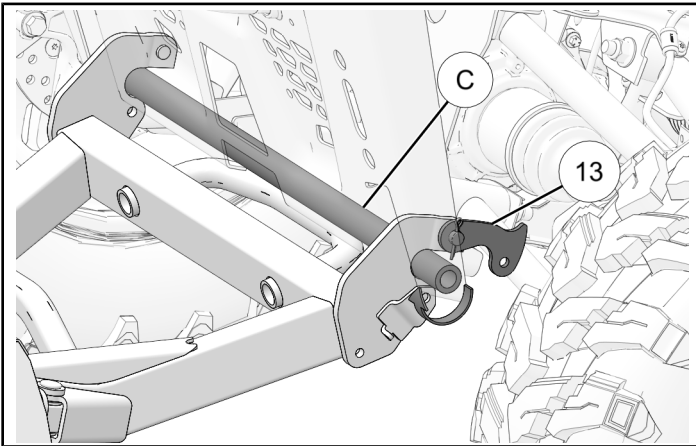


PLOW INSTALLATION

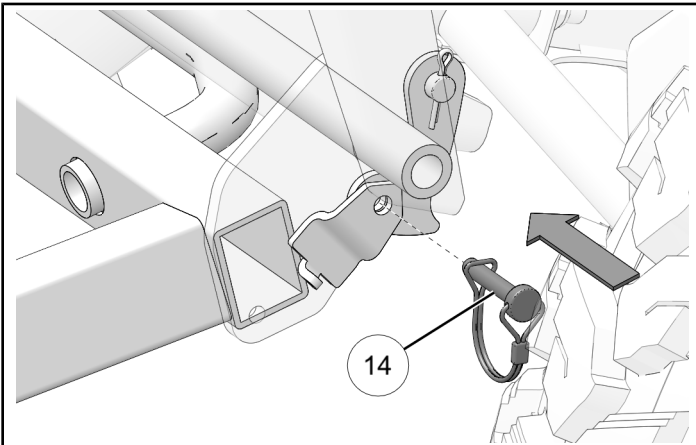
NOTICE

Frame installation may require a mount plate specific to your vehicle. Certain vehicles come equipped from the factory with the plow mount already attached to the vehicle.

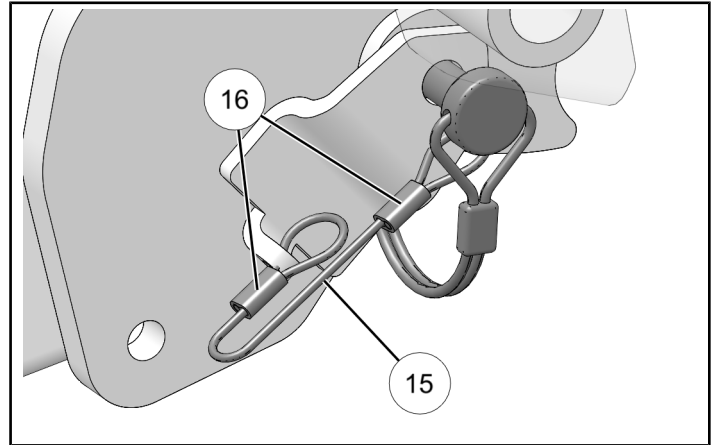
1. Lay the plow assembly on the ground in front of the vehicle. Make sure the lock pins are removed to allow the locking plates **13** to swing freely.
2. Slide the assembly toward the vehicle so that the plow frame attachment pockets slide onto the vehicle's plow mounting bar **C**.



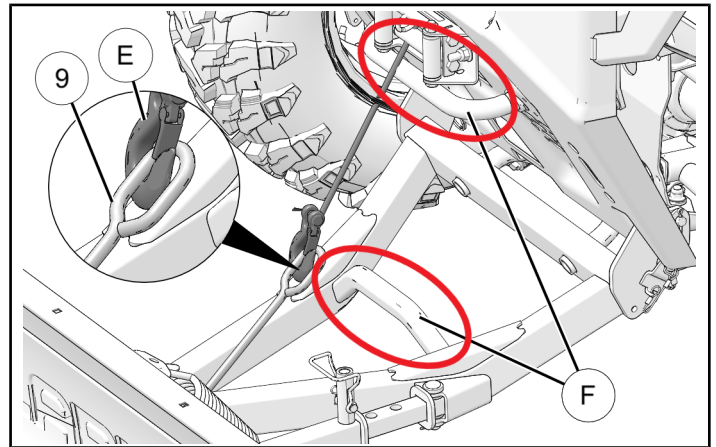
3. Once plow frame is fully seated onto the mounting bar make sure the locking plates are rotated into position to allow the locking pins **14** to be inserted.



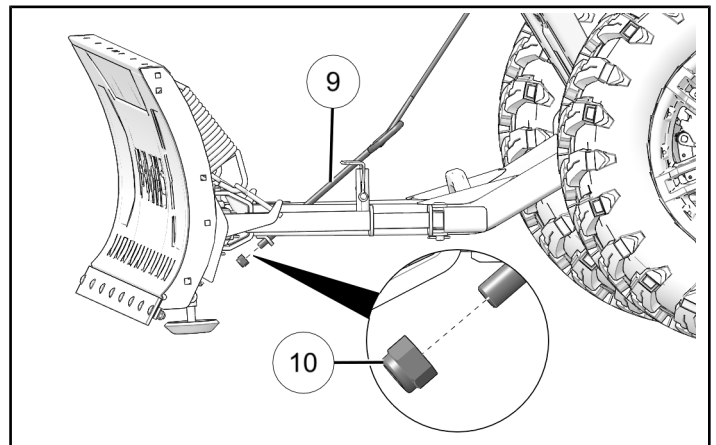
4. Insert the locking pins and latch the lanyard **15** and lanyard choke **16** to secure the pins in place.



5. Attach the winch hook **E** to the winch link bolt **9**.

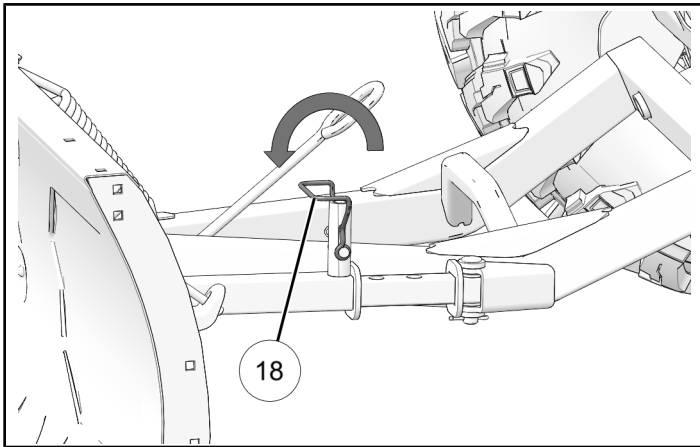


6. Using the winch, raise the blade fully so the plow is touching the bumper. See illustration for contact points **F**.
7. Adjust nut on the winch link **9** so the winch stops when the plow has made contact with the bumper (has reached its upper limit) at above shown locations **F**.

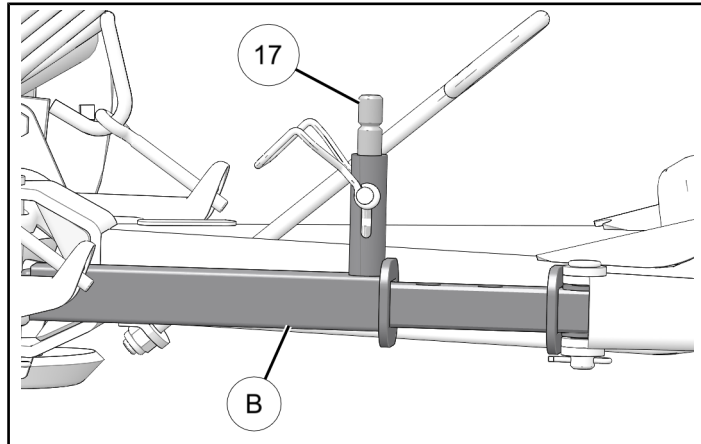


PLOW OPERATION INSTRUCTIONS

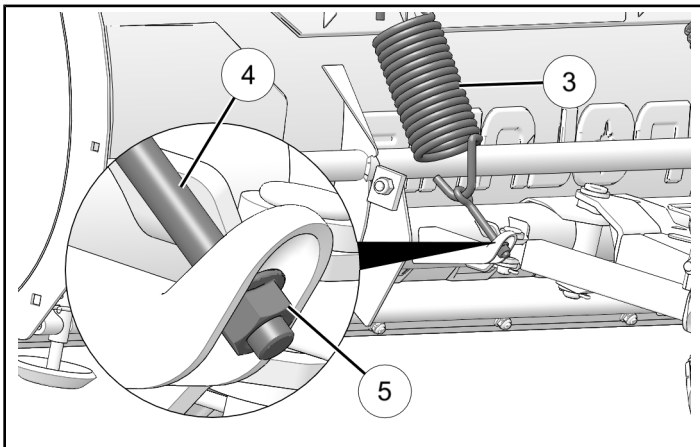
- To adjust the angle of the plow so it pushes to the side, lift the plow up with the winch to clear the ground. Rotate the shear pin handle ⑱ on the pivot arm assembly to the unlocked position and pull up to disengage the shear pin. This will allow the plow to be angled to one of the pre-determined angles. Once in the desired position secure the plow in position by pushing the shear pin back down into one of the holes nearest your desired position and rotate the handle back into the locked position.



- In the event of a collision with an obstacle at a speed greater than that recommended for the system, the shear pin ⑰ of the manual angle mechanism ② will break to minimize the force of impact in the frame. If the shear pin is broken, inspect the plow system for damaged parts. If any part is damaged, the impact velocity was greater than what the system is designed to support. You must then buy a replacement part from your dealer.



- The plow is designed to trip forward when it hits a solid object. When the pressure on the plow is released, it will return to its original position by itself. The plow springs ③ may be set stiffer by tightening the self-locking nuts ⑤ located at the ends of the eye bolts ④. For less tension, loosen the nuts.



OPERATION

IMPORTANT

Read and understand the following operating instructions to avoid severe personal injury or death. Compliance with these measures will also ensure that your snow plow will give you many years of good use.

1. Re-torque all bolts and nuts after the first 30 minutes of use.
2. Do not exceed 5 mp/h (8 km/h) with the blade installed.
3. Operate with extreme caution on slopes, grades, and rough terrain.
4. Keep bystanders away from the blade and vehicle while in motion.
5. Do not allow riders on the blade or vehicle when plowing.
6. When plowing snow or dirt into a pile, start backing up before raising the blade.
7. Do not ram the blade into a snow pile. Slow down before hitting a pile.
8. Be aware of possible hidden objects under the snow.
9. Read the blade Owner's Manual, vehicle's Owner's Manual, and Safety Decals prior to operation.
10. Always wear appropriate protective clothing as recommended in your vehicle's Owner's Manual.
11. Before you adjust the blade angle: stop the engine, set and lock the brakes, and raise the blade with the winch. Do not attempt to raise the blade by hand.
12. Lower the blade to the down position when the blade and vehicle are not in use.
13. Polaris recommends that you remove the blade and plow frame from the vehicle before you ride.

INSTRUCTION FEEDBACK FORM

A feedback form has been created for the installer to provide any comments, questions or concerns about the installation instructions. The form is viewable on mobile devices by scanning the QR code or by clicking [HERE](#) if viewing on a PC.

