

HEAVY DUTY FRONT BUMPER KIT

POLARIS

ENGINEERED PARTS
ACCESSORIES & APPAREL

P/N 2889271

BEFORE YOU BEGIN

Read these instructions and check to be sure all parts and tools are accounted for. Please retain these installation instructions for future reference and parts ordering information.

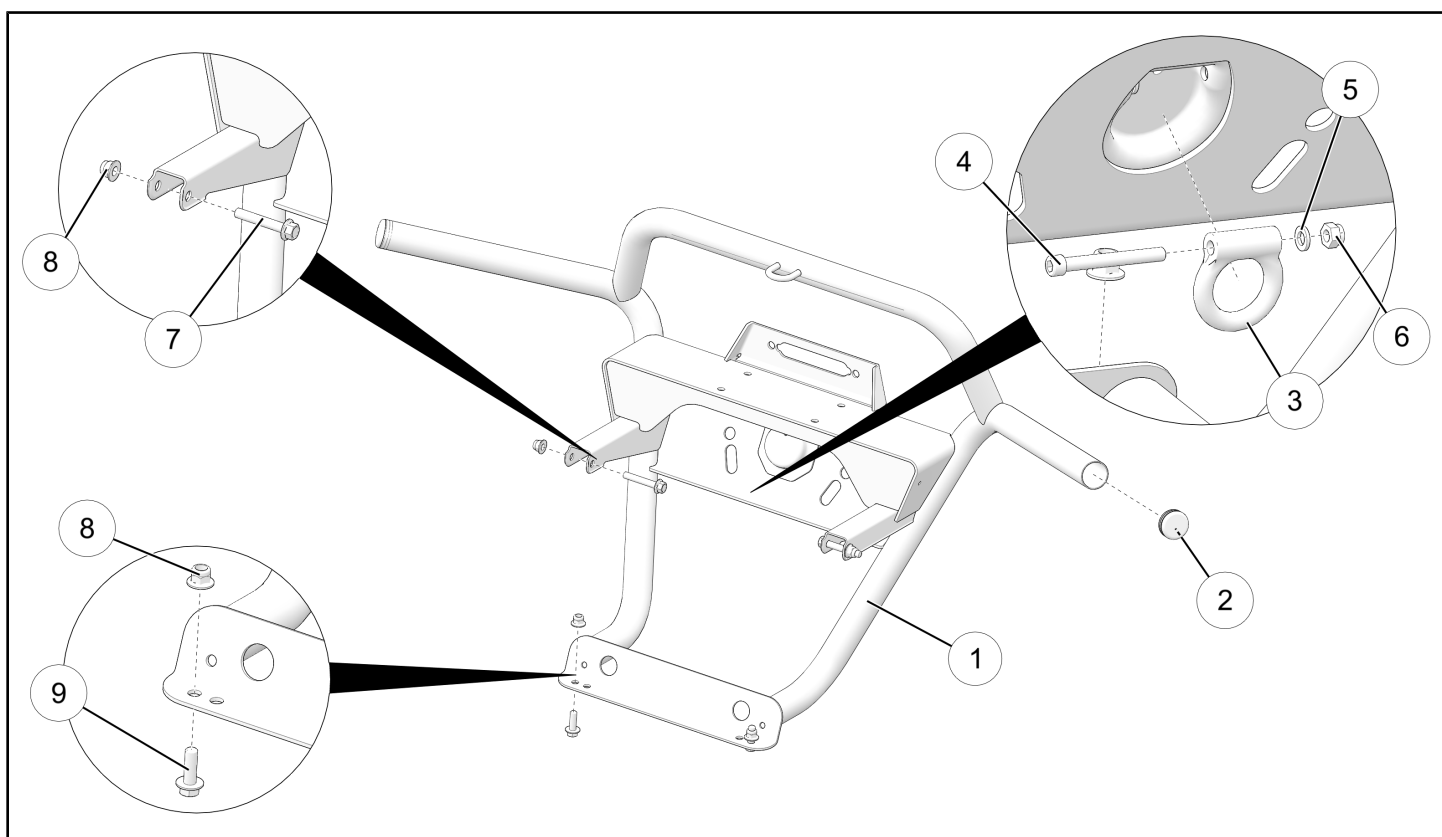
APPLICATION

Verify accessory fitment at www.polaris.com.

KIT CONTENTS

NOTICE

XXX = RANGER® color code (For example: 266 = Black)



REF	QTY	PART DESCRIPTION	P/N AVAILABLE SEPARATELY
1	1	Weld-Bumper, Front	N/A
2	2	Cap-Bumper	5434191
3	1	Forging-D-Ring	5632152-XXX
4	1	Screw, Hex Socket Head, 5/16 x 18 x 2-5/8 in	7518911
5	2	Washer, Spring Locking, 5/16 in	7552901
6	1	Nut, Nylon Locking, 5/16-18 in	7542324
7	2	Screw, Hex Flange, M10 x 1.25 x 60 mm	7519210

REF	QTY	PART DESCRIPTION	P/N AVAILABLE SEPARATELY
8	4	Nut, Flange, Nylon Locking, M10 x 1.25 mm	7547333
9	2	Screw, Hex Flange, M10 x 1.25 x 30 mm	7519059

TOOLS REQUIRED

- Safety Glasses
- Screwdriver Set, Torx®
- Socket Set, Metric
- Torque Wrench
- Wrench Set, Metric

IMPORTANT

Your Heavy Duty Front Bumper Kit is exclusively designed for your vehicle. Please read the installation instructions thoroughly before beginning. Installation is easier if the vehicle is clean and free of debris. For your safety, and to ensure a satisfactory installation, perform all installation steps correctly in the sequence shown.

INSTALLATION INSTRUCTIONS

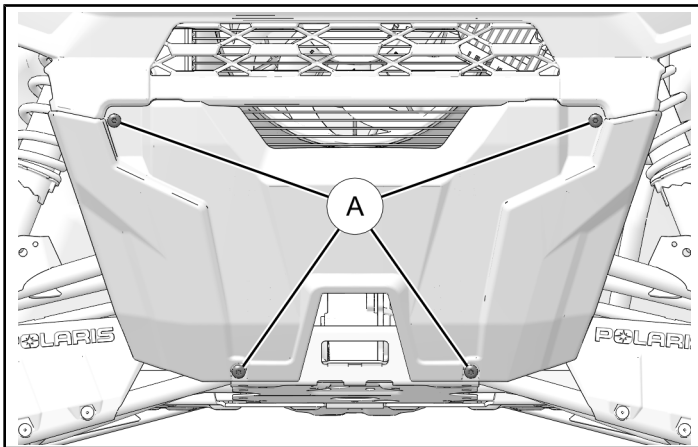
VEHICLE PREPARATION

GENERAL

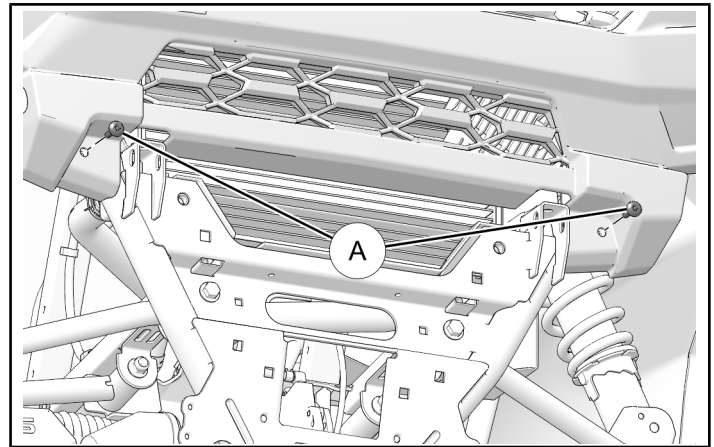
1. Park vehicle on a flat surface.
2. Shift vehicle into PARK.
3. Turn key to OFF position and remove key.

FRONT FASCIA REMOVAL

1. Remove four screws (A) and remove lower front fascia. Keep any two screws. Remaining two screws and fascia will not be reused.



2. Install upper two screws (A). Tighten until fully seated.



NON-HD FRONT BUMPER REMOVAL

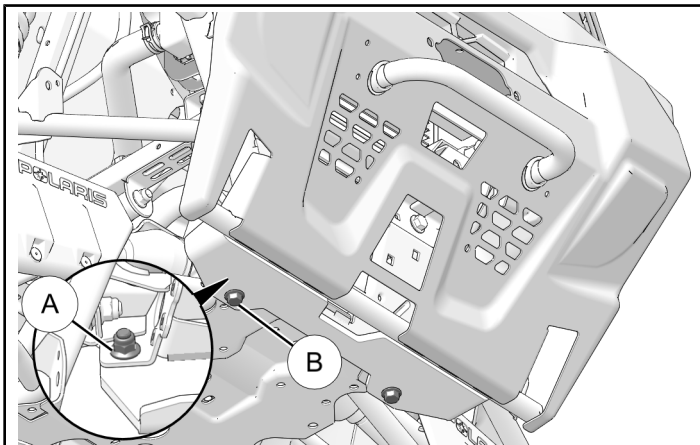
⚠ CAUTION

Bumper weighs approximately 31 (14 kg). Failure to adequately support bumper during removal may result in personal injury or damage to equipment.

1. Remove and discard nut ① and bolt ②. Repeat for opposite side.

NOTICE

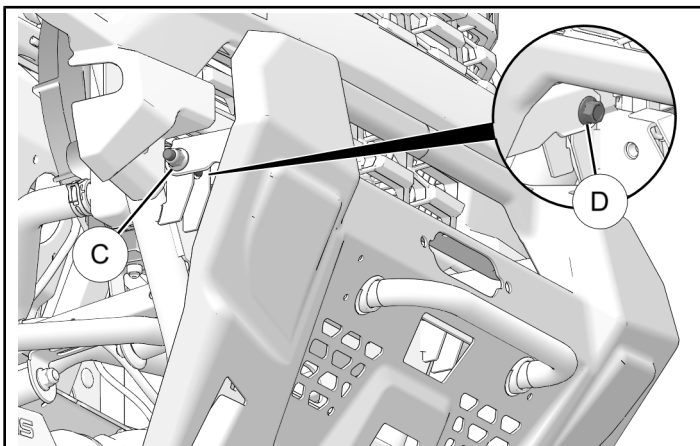
RH side detail shown; LH side similar.



2. Support bumper, remove and discard nut ③ and bolt ④. Repeat for opposite side.

NOTICE

RH side detail shown; LH side similar.



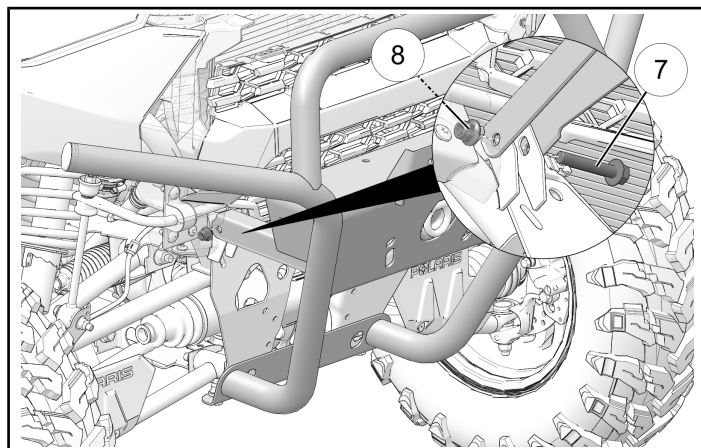
ACCESSORY INSTALLATION

IMPORTANT

Polaris recommends two people install this kit.

INSTALL NEW HD FRONT BUMPER

1. Lift HD bumper ① into position. Attach to chassis at both upper mounting locations using two screws ⑦ and two nuts ⑧. Make sure bolt heads are on inboard side, nuts on outboard side.

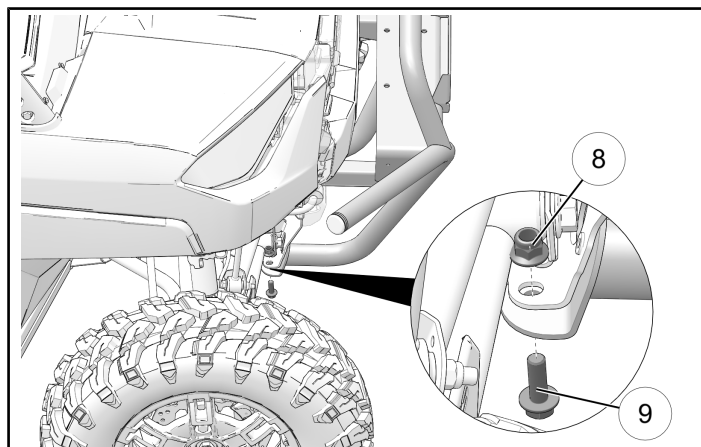


2. Counter-hold nuts ⑧ and torque two screws ⑦ to specification.

TORQUE

Upper Mounting Screws ⑦:
30 ft-lbs (41 N·m)

3. Attach bumper to chassis at both lower mounting locations using two screws ⑨ and two nuts ⑧. Make sure bolt heads are on underside, nuts on topside.



4. Counter-hold nuts ⑧ and torque two screws ⑨ to specification.

TORQUE

Lower Mounting Screws ⑨:
30 ft-lbs (41 N·m)

INSTRUCTION FEEDBACK FORM

A feedback form has been created for the installer to provide any comments, questions or concerns about the installation instructions. The form is viewable on mobile devices by scanning the QR code or by clicking [HERE](#) if viewing on a PC.

