

# DOOR MOUNTED SIDE MIRROR KIT



P/N 2889241

## BEFORE YOU BEGIN

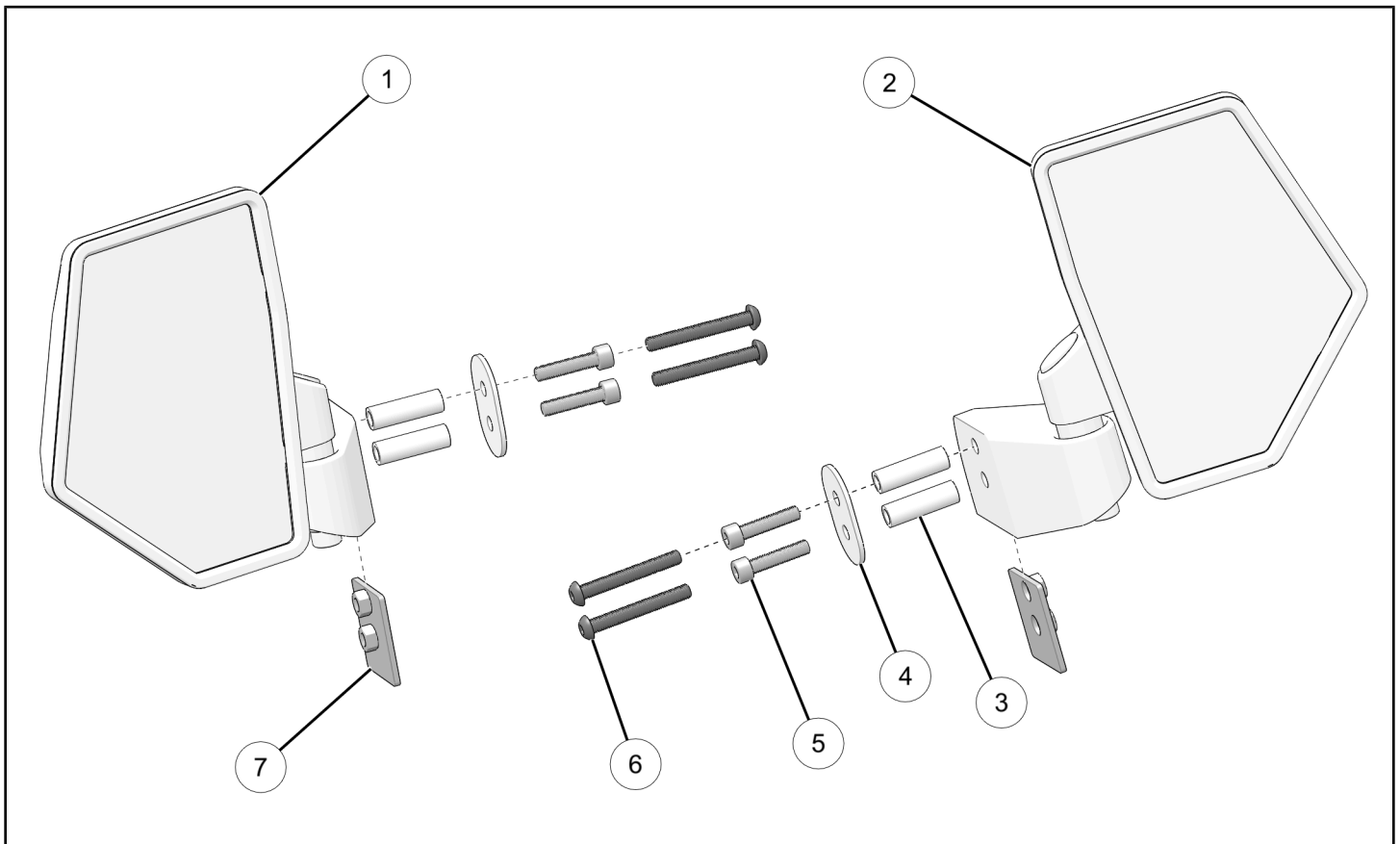
Before beginning assembly, inspect the kit and its component(s) to be sure all parts and tools are accounted for and not damaged. If missing parts or parts are damaged, please contact your Selling Dealer for assistance.

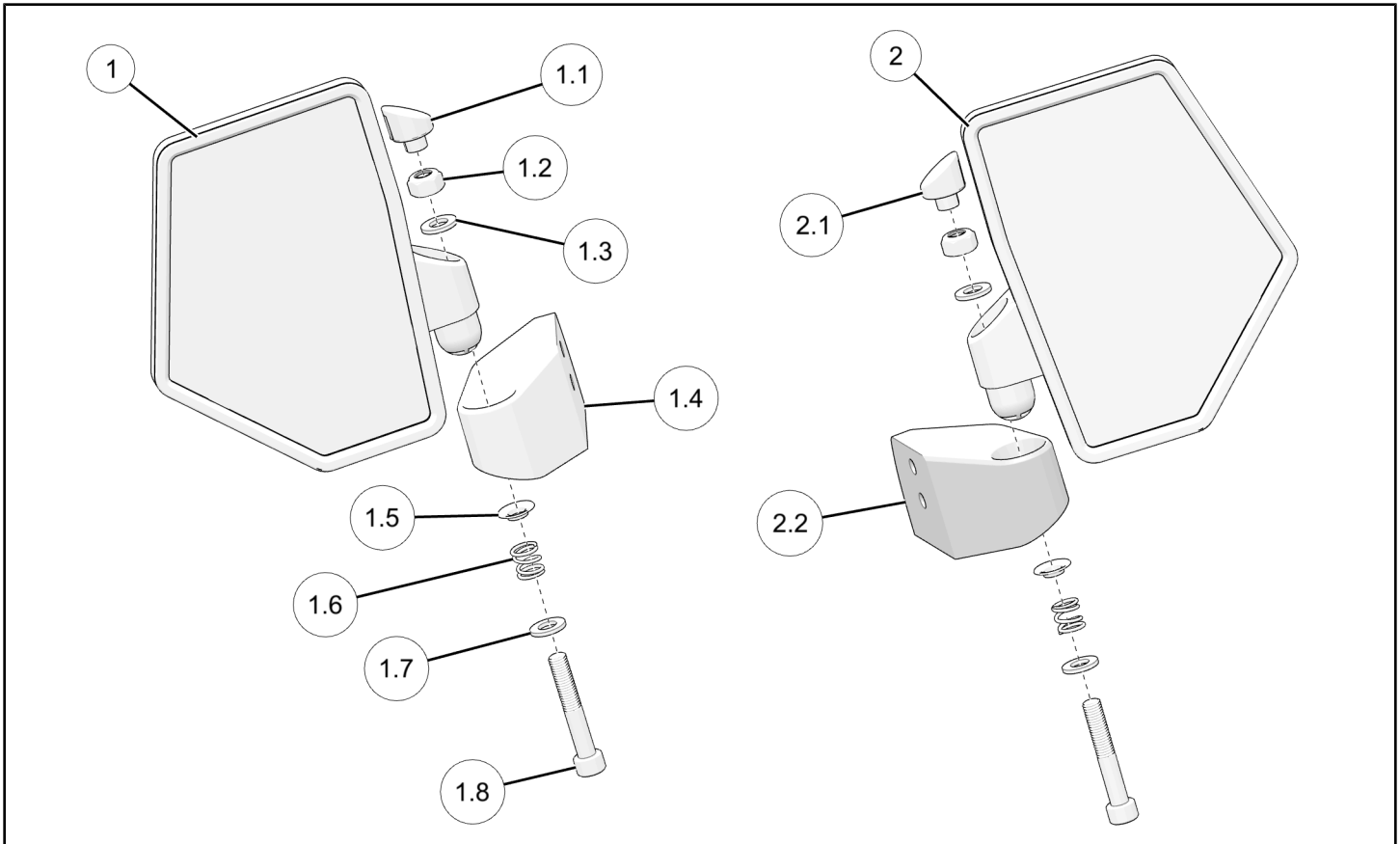
If your accessory was purchased online, please contact POLARIS customer service at **1-800-POLARIS** (US & Canada only).

## APPLICATION

Verify accessory fitment at [www.polaris.com](http://www.polaris.com).

## KIT CONTENTS





REF	QTY	PART DESCRIPTION	P/N AVAILABLE SEPARATELY	AVAILABLE SERVICE KIT
1	1	Mirror Assembly, Left	n/a	2209162
1.1	1	– Mirror Bolt Cap, Left	n/a	2209164
1.2	1	– Nut, M10	n/a	2209164
1.3	2	– Rubber Washer	n/a	2209164
1.4	1	– Mirror Base, Left	n/a	2209164
1.5	2	– Spring Mount Spacer	n/a	2209164
1.6	2	– Compression Spring	n/a	2209164
1.7	2	– Washer, M10	n/a	2209164
1.8	2	– Screw, Socket Head, M10 x 60 mm	n/a	2209164
2	1	Mirror Assembly, Right	n/a	2209163
2.1	1	– Mirror Bolt Cap, Right	n/a	2209164
2.2	1	– Mirror Base, Right	n/a	2209164
3	4	Spacer, 0.5 OD x 8.5 ID x 4 mm	n/a	2209164
4	2	Mirror Backer Plate	n/a	2209164
5	4	Screw, Socket Head, M8 x 35 mm	n/a	2209164
6	4	Screw, Button Head Hex, M8 x 1.25 x 60 mm	n/a	2209164

REF	QTY	PART DESCRIPTION	P/N AVAILABLE SEPARATELY	AVAILABLE SERVICE KIT
7	2	Backer Plate, Weld Nut	n/a	n/a
8	1	Door Mirror Templates (not shown)	9940513	n/a

## TOOLS REQUIRED

- Safety Glasses
- Center Punch
- Drill
- Drill Bit:
  - 1/2 in (13 mm)
  - 1/8 in (3 mm)
  - 11/32 in (9 mm)
- Scissors
- Socket Set, Metric
- Socket Set, SAE
- Socket Set, Torx® Bit

## CONSUMABLES REQUIRED

- Tape, Masking

## IMPORTANT

Your Door Mounted Side Mirror Kit is exclusively designed for your vehicle. Please read the installation instructions thoroughly before beginning. Installation is easier if the vehicle is clean and free of debris. For your safety, and to ensure a satisfactory installation, perform all installation steps correctly in the sequence shown.

## INSTALLATION INSTRUCTIONS

### VEHICLE PREPARATION

#### GENERAL

1. Park vehicle on a flat surface.
2. Shift vehicle into PARK.
3. Turn key to OFF position and remove key.

#### PREPARE TEMPLATE

1. Cut out template along outer border.

## PREPARE DOORS

### RANGER 1000 AND XP 1000 MODELS

#### NOTICE

Left side shown; Right side similar.

1. Tape outer skin template to outside edge of driver side front door, as shown.

#### IMPORTANT

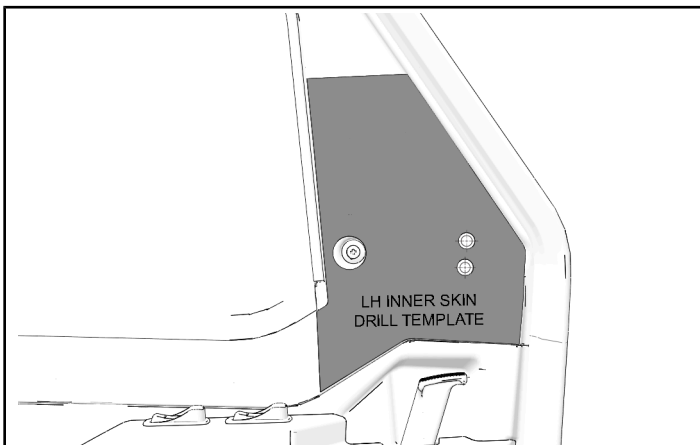
Make sure template curve aligns with door curve.



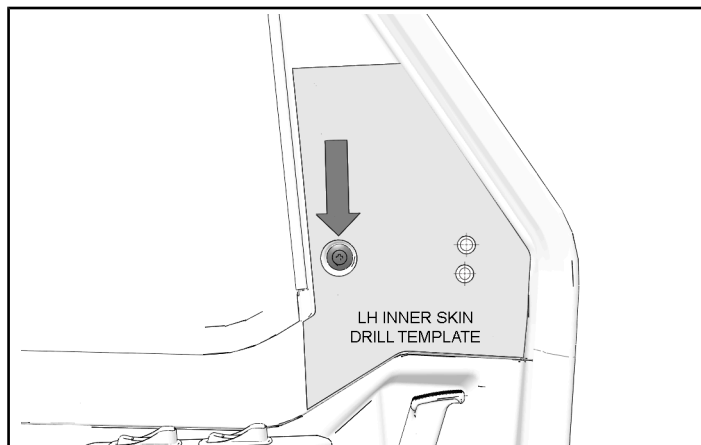
2. Tape inner skin template to inside edge of driver side door, as shown.

#### IMPORTANT

Make sure template curve aligns with door curve.



3. Align bolt cut-out on template over bolt on inside of door.



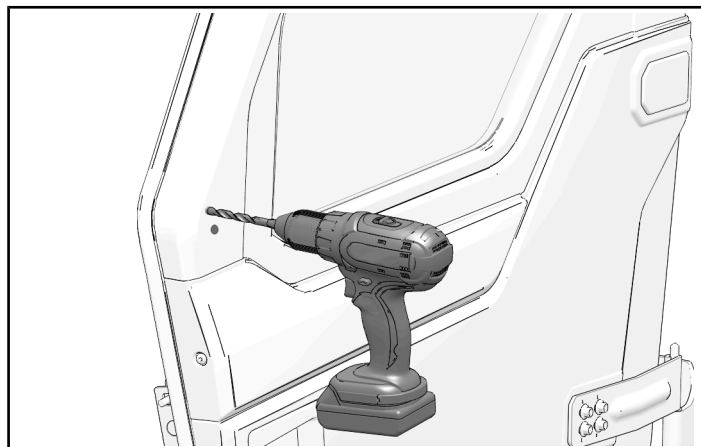
4. Mark each template cross-hair with center punch.
5. Remove paper templates.
6. Drill pilot hole through center of each marked location on outside of door.

#### NOTICE

Do not drill straight through entire door. To prevent misalignment of spacer holes, drill each pilot hole through one layer of plastic on the outside of door.

#### MEASUREMENT

Drill Bit Size:  
1/8 in (3 mm)



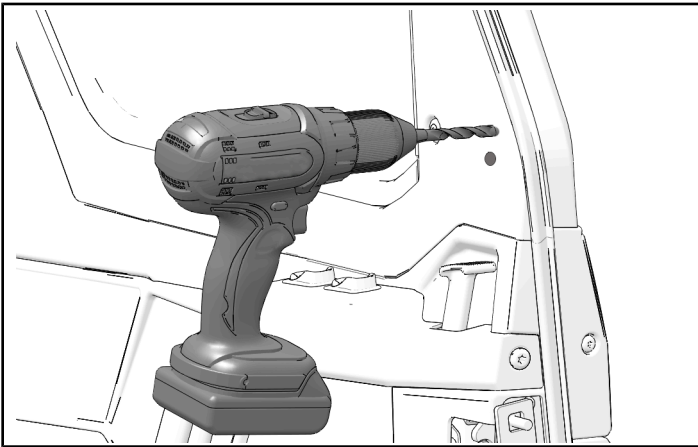
7. Drill pilot hole through center of each marked location on inside of door.

**NOTICE**

Do not drill straight through entire door. To prevent misalignment of spacer holes, drill each pilot hole through one layer of plastic on inside of door.

**MEASUREMENT**

Drill Bit Size:  
**1/8 in (3 mm)**



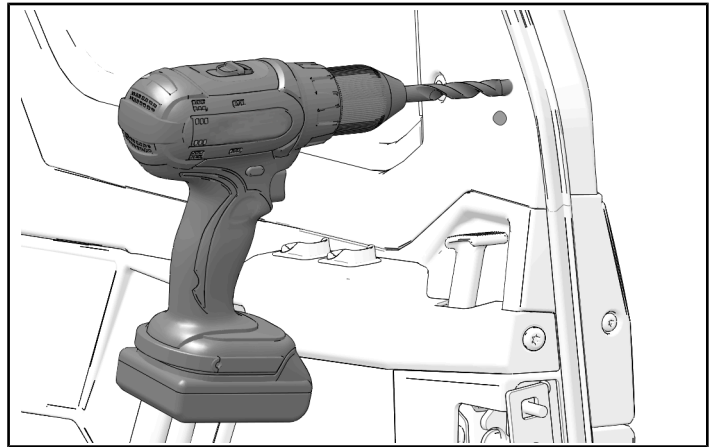
9. Drill larger spacer hole through each pilot hole on inside of door.

**NOTICE**

Do not drill straight through entire door. To prevent misalignment of spacer holes, drill each hole through one layer of plastic on inside of door.

**MEASUREMENT**

Drill Bit Size:  
**1/2 in (13 mm)**



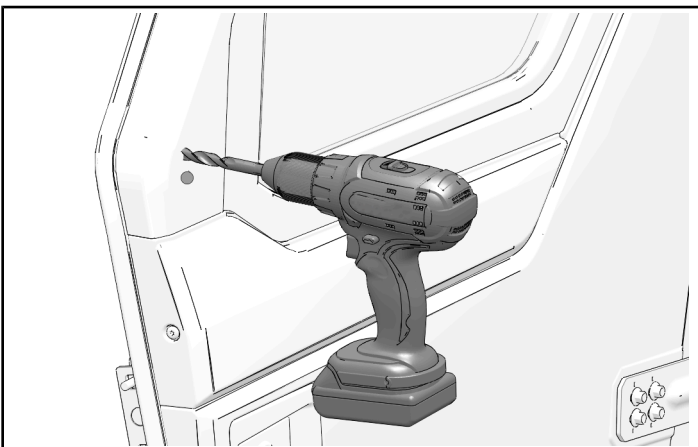
8. Drill larger spacer hole through each pilot hole on outside of door.

**NOTICE**

Do not drill straight through entire door. To prevent misalignment of spacer holes, drill each hole through one layer of plastic on outside of door.

**MEASUREMENT**

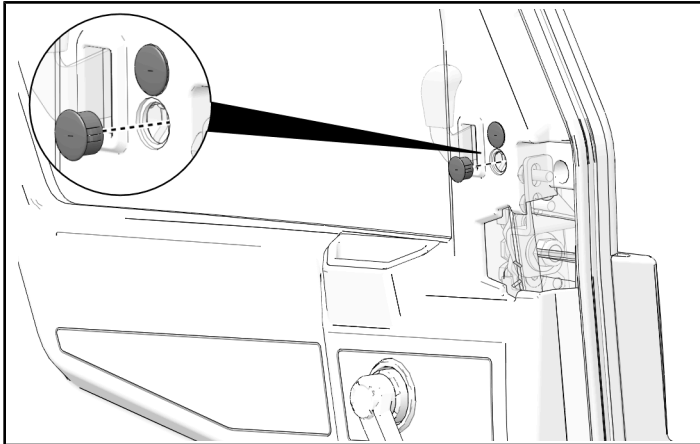
Drill Bit Size:  
**1/2 in (13 mm)**



10. Repeat steps for right side front door.

## MIDSIZE MODELS

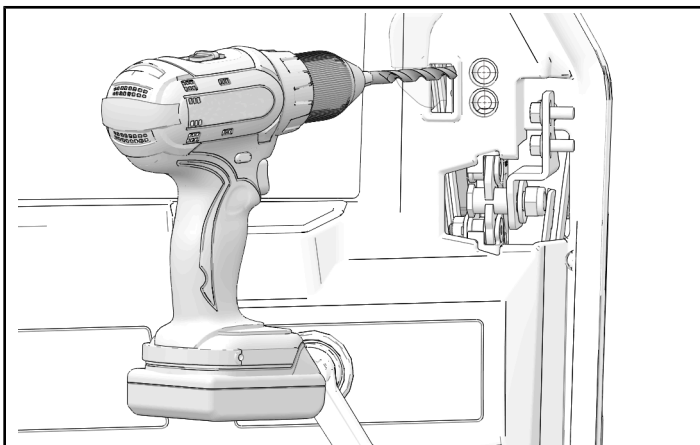
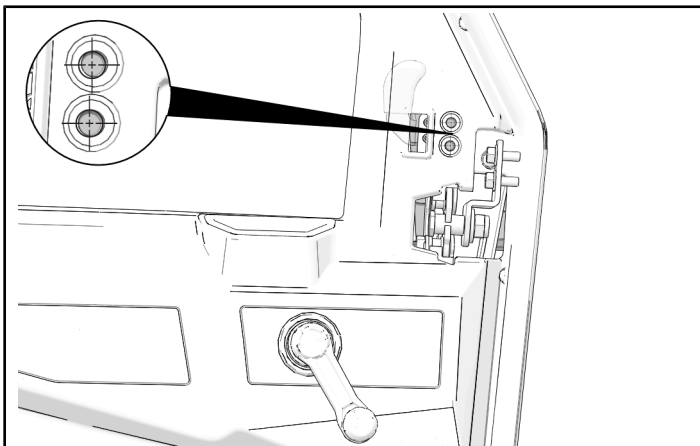
1. Remove and keep two caps from inside door.



2. Drill one hole through each pre-marked indentation on inside of door.

### MEASUREMENT

Drill Bit Size:  
11/32 in (9 mm)



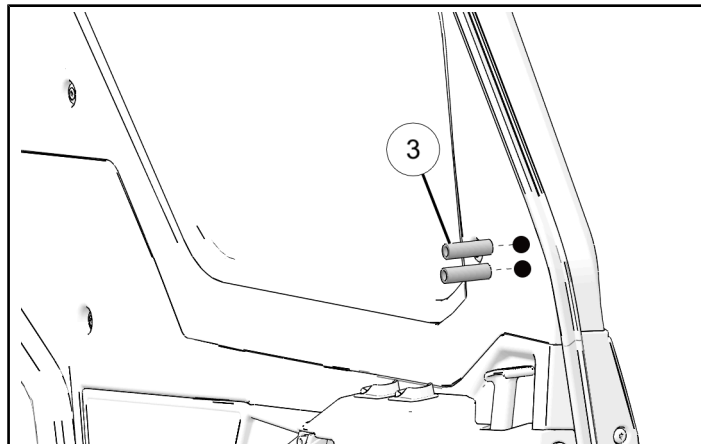
## ACCESSORY INSTALLATION

### RANGER 1000 AND XP 1000 MIRROR INSTALLATION

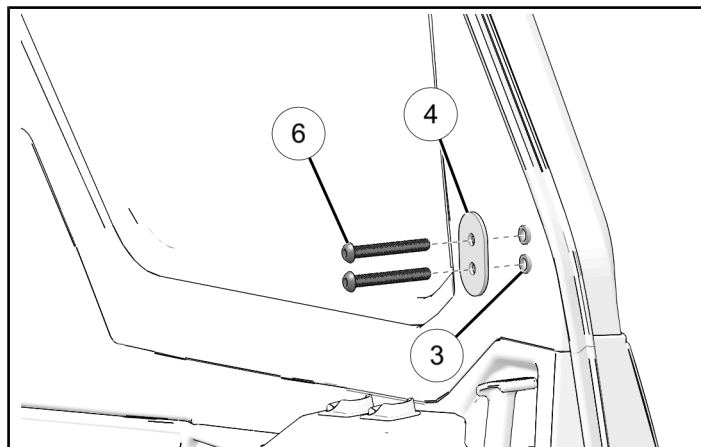
#### NOTICE

Left side shown; right side similar.

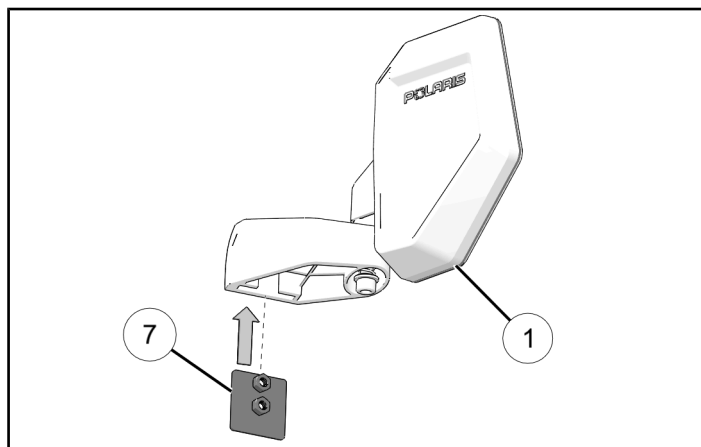
1. Install one spacer (3) into each pre-drilled hole on door.



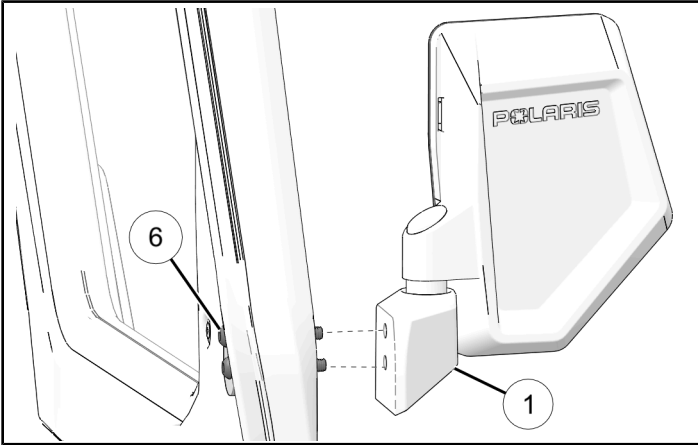
2. Install mirror backer plate (4) to inside of door with two screws (6) through two spacers (3).



3. Put weld nut backer plate (7) into mirror arm (1).



4. Install mirror assembly ① to door with two screws ⑥.



5. Torque screws to specification.

**TORQUE**

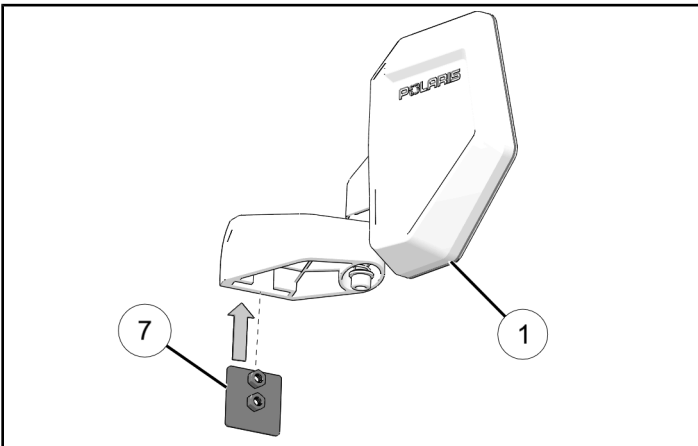
Mirror Screws ⑥:  
**106 in-lbs (12 N·m)**

**MIDSIZE MIRROR INSTALLATION**

**NOTICE**

Left side shown; right side similar

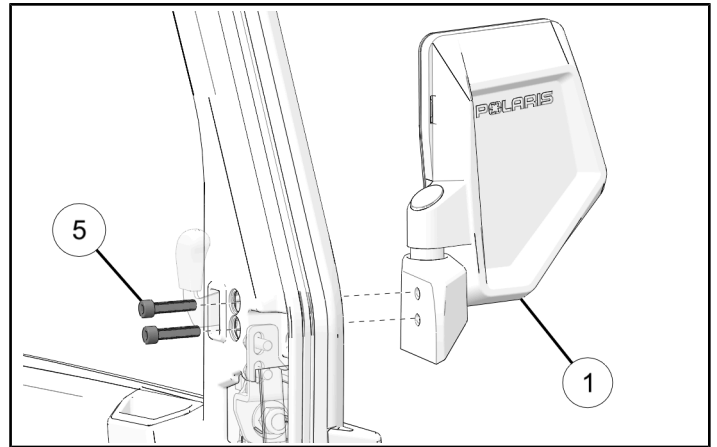
1. Put weld nut backer plate ⑦ into mirror arm ①.



2. Install mirror assembly ① to door with two screws ⑤.

**NOTICE**

Install both screws through pre-drilled holes on inside of door.

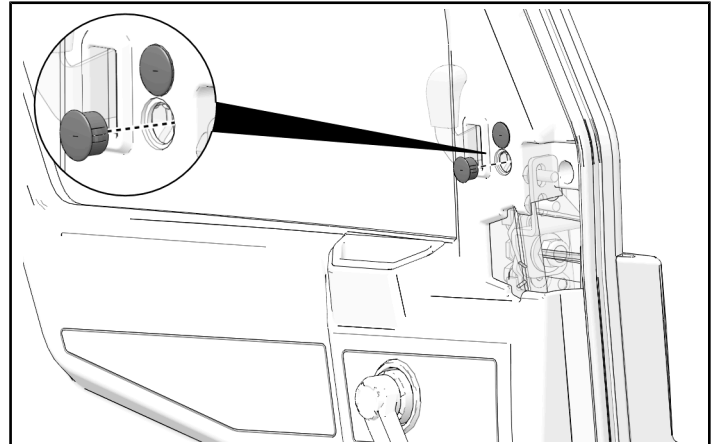


3. Torque screws to specification.

**TORQUE**

Mirror Screws ⑤:  
**106 in-lbs (12 N·m)**

4. Install two kept caps to inside of door.



## OPERATION

1. Adjust mirrors for best visibility.
2. Tighten pivot bolt as needed.

### IMPORTANT

Mirror pivot joint is designed to give way under impact to avoid potential damage. Avoid over tightening pivot bolt when in areas or situations where mirror impacts are more likely to happen. Over tightening pivot bolts could cause damage to the side mirrors in the event of an impact.

