

# DOOR MOUNTED SIDE MIRROR KIT

**POLARIS**ENGINEERED PARTS  
ACCESSORIES & APPAREL

P/N 2889241

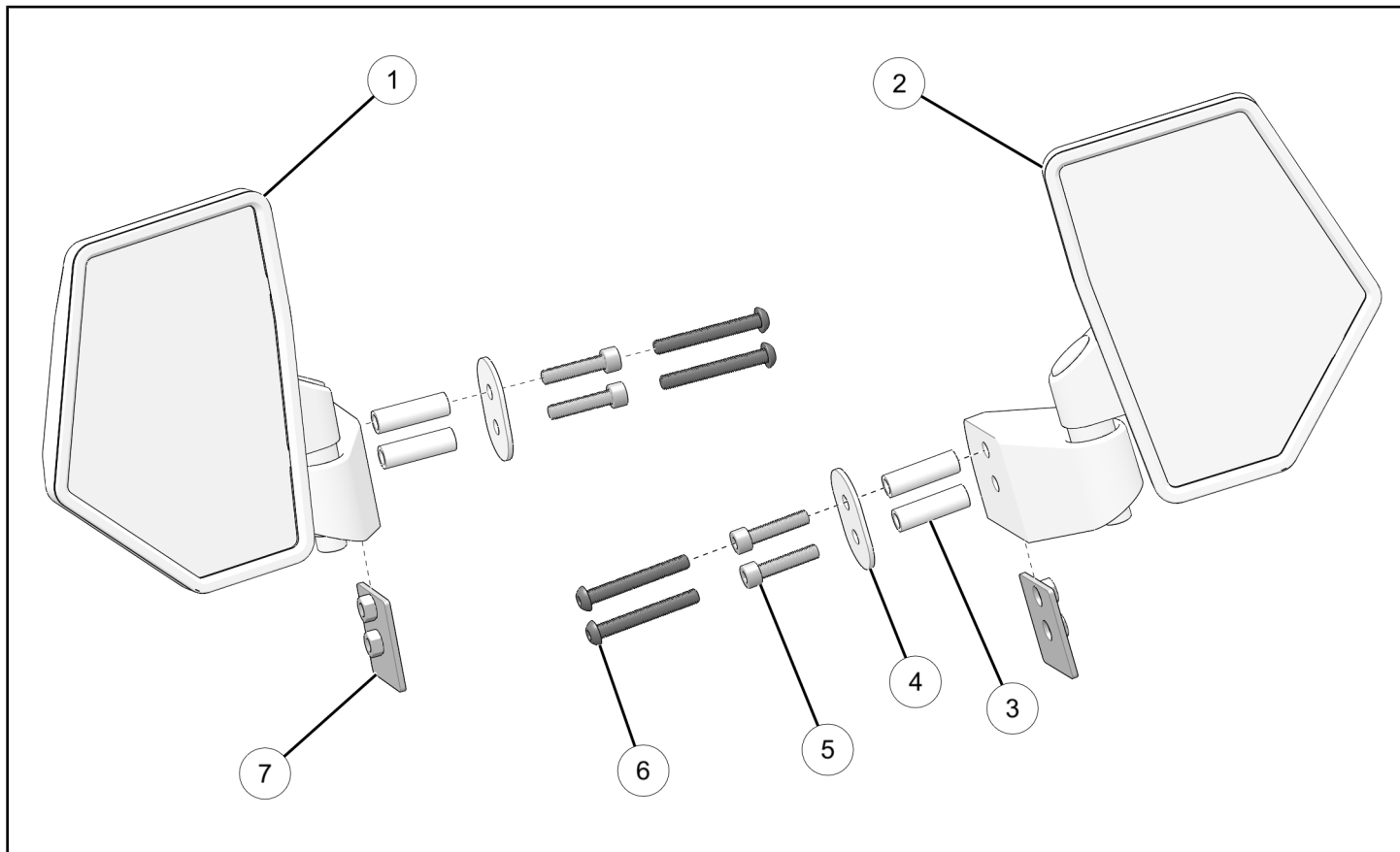
## BEFORE YOU BEGIN

Read these instructions and check to be sure all parts and tools are accounted for. Please retain these installation instructions for future reference and parts ordering information.

## APPLICATION

Verify accessory fitment at [www.polaris.com](http://www.polaris.com).

## KIT CONTENTS



| REF | QTY | PART DESCRIPTION                           | P/N AVAILABLE SEPARATELY | AVAILABLE SERVICE KIT |
|-----|-----|--|--------------------------|-----------------------|
| 1   | 1   | Assembly – Mirror, Left-hand               | n/a                      | 2209162               |
| 2   | 1   | Assembly – Mirror, Right-hand              | n/a                      | 2209163               |
| 3   | 4   | Spacer, 0.5 OD x 8.5 ID x 4 mm             | n/a                      | 2209164               |
| 4   | 2   | Backer Plate, Mirror                       | n/a                      | 2209164               |
| 5   | 4   | Screw – Socket Head, M8 x 35 mm            | n/a                      | 2209164               |
| 6   | 4   | Screw – Button Head Hex, M8 x 1.25 x 60 mm | n/a                      | 2209164               |
| 7   | 2   | - Backer Plate, Weld Nut                   | n/a                      | n/a                   |
| 8   | 1   | Templates – Door, Mirrors                  | 9940513                  | n/a                   |

## TOOLS REQUIRED

- Safety Glasses
- Center Punch
- Drill
- Drill Bit:
  - 1/2 in (13 mm)
  - 1/8 in (3 mm)
  - 11/32 in (9 mm)
- Scissors
- Socket Set, Metric
- Socket Set, SAE
- Socket Set, Torx® Bit

## CONSUMABLES REQUIRED

- Tape, Masking

## IMPORTANT

Your Door Mounted Side Mirror Kit is exclusively designed for your vehicle. Please read the installation instructions thoroughly before beginning. Installation is easier if the vehicle is clean and free of debris. For your safety, and to ensure a satisfactory installation, perform all installation steps correctly in the sequence shown.

## INSTALLATION INSTRUCTIONS

### VEHICLE PREPARATION

#### **GENERAL**

1. Park vehicle on a flat surface.
2. Shift vehicle into PARK.
3. Turn key to OFF position and remove key.

#### **PREPARE TEMPLATE**

1. Cut out template along outer border.

## PREPARE DOORS

### 1000 AND 1000 XP MODELS

#### NOTICE

Left side shown; Right side similar.

1. Tape outer skin template to outside edge of driver side front door, as shown.

#### IMPORTANT

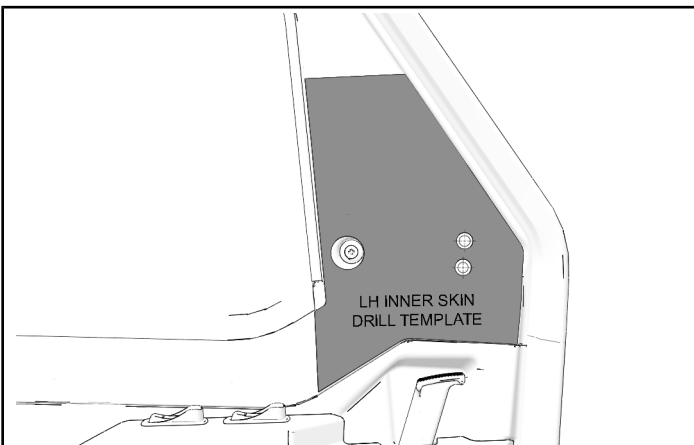
Make sure template curve aligns with door curve.



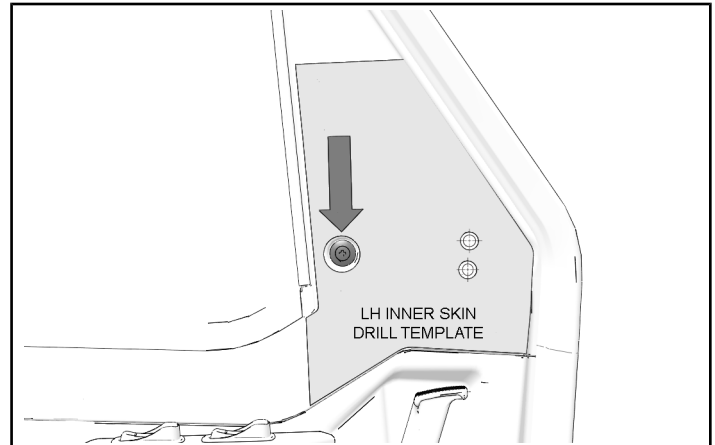
2. Tape inner skin template to inside edge of driver side door, as shown.

#### IMPORTANT

Make sure template curve aligns with door curve.



3. Align bolt cut-out on template over the bolt on the inside of door.



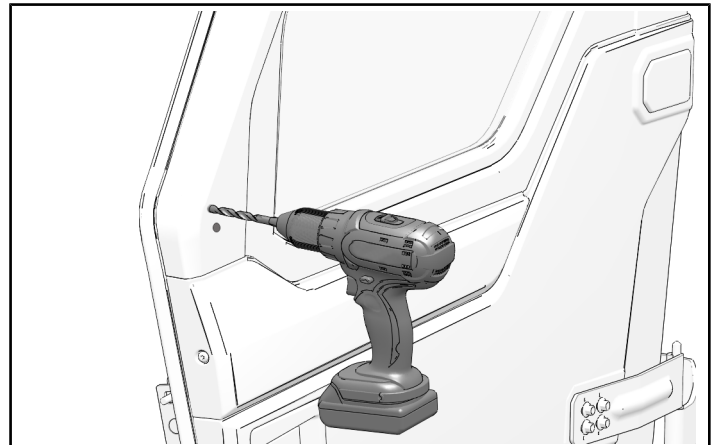
4. Mark each template cross-hair with center punch.
5. Remove paper templates.
6. Drill pilot hole through the center of each marked location on the outside of door.

#### NOTICE

Do not drill straight through entire door. To prevent misalignment of spacer holes, drill each pilot hole through one layer of plastic on the outside of door.

#### MEASUREMENT

Drill Bit Size:  
**1/8 in (3 mm)**



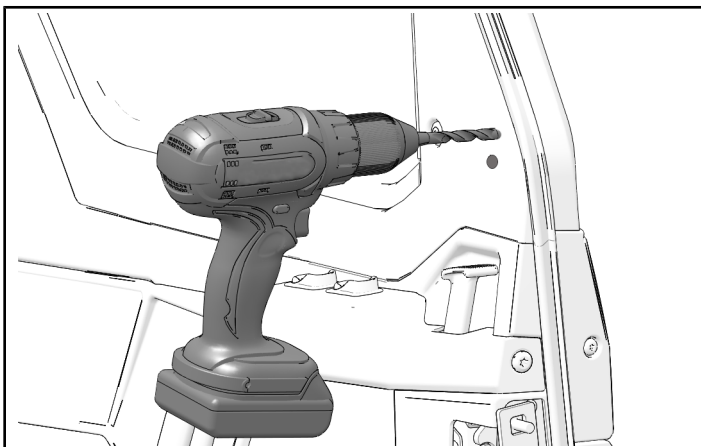
7. Drill pilot hole through the center of each marked location on the inside of door.

**NOTICE**

Do not drill straight through entire door. To prevent misalignment of spacer holes, drill each pilot hole through one layer of plastic on the inside of door.

**MEASUREMENT**

Drill Bit Size:  
**1/8 in (3 mm)**



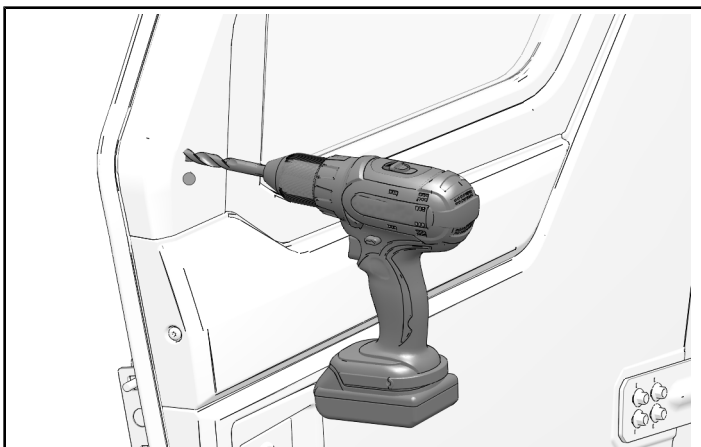
8. Drill larger spacer hole through each pilot hole on outside of door.

**NOTICE**

Do not drill straight through entire door. To prevent misalignment of spacer holes, drill each hole through one layer of plastic on the outside of door.

**MEASUREMENT**

Drill Bit Size:  
**1/2 in (13 mm)**



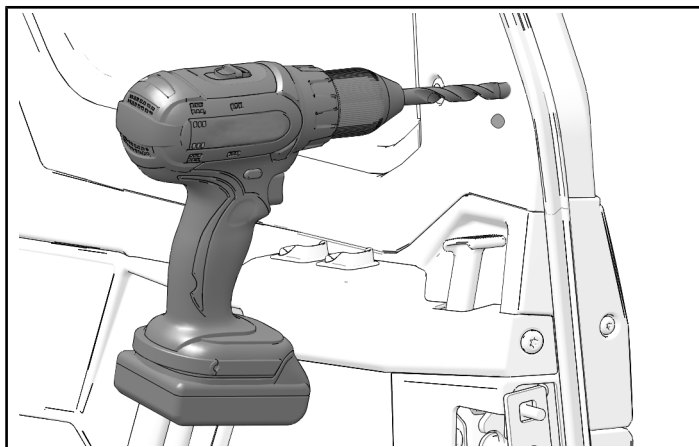
9. Drill larger spacer hole through each pilot hole on inside of door.

**NOTICE**

Do not drill straight through entire door. To prevent misalignment of spacer holes, drill each hole through one layer of plastic on the inside of door.

**MEASUREMENT**

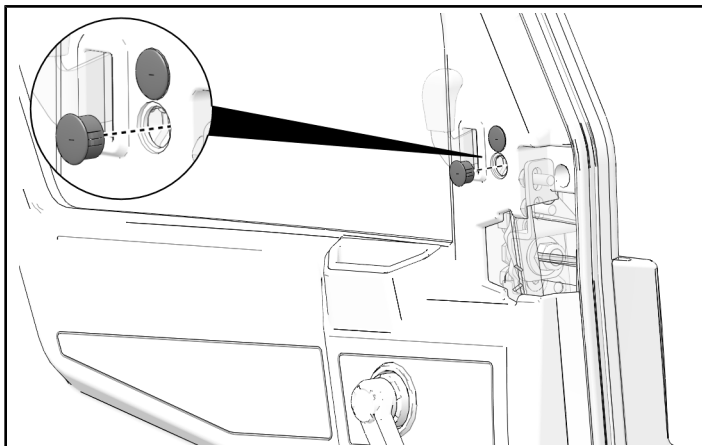
Drill Bit Size:  
**1/2 in (13 mm)**



10. Repeat steps for right side front door.

## MIDSIZE MODELS

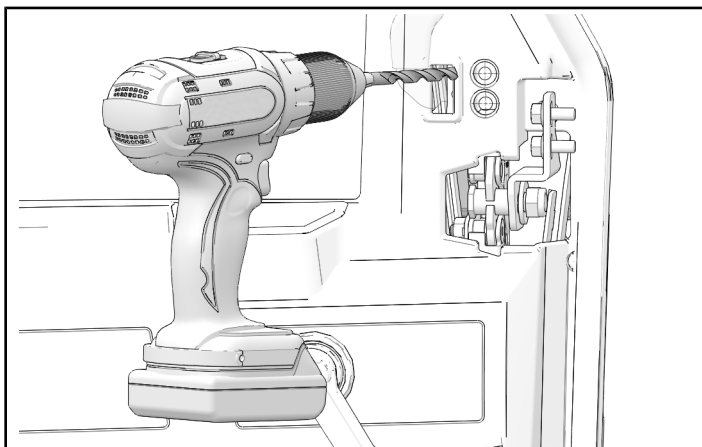
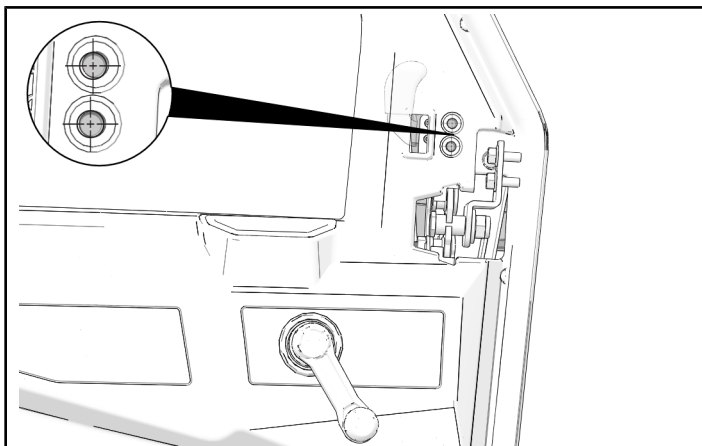
1. Remove and keep two caps from inside door.



2. Drill one hole through each pre-marked indentation on the inside of the door.

### MEASUREMENT

Drill Bit Size:  
**11/32 in (9 mm)**



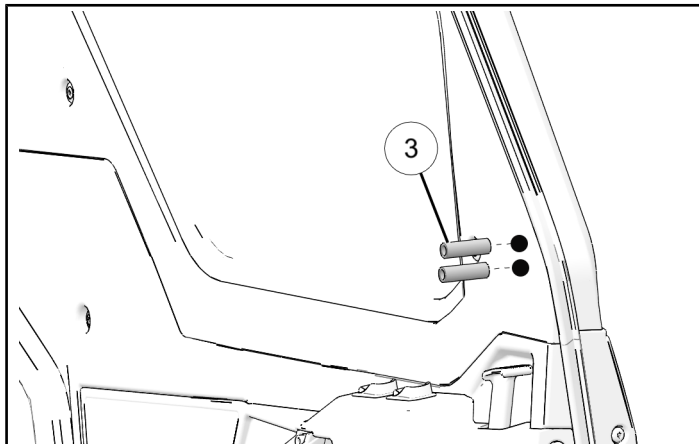
## ACCESSORY INSTALLATION

### 1000 AND 1000 XP MIRROR INSTALLATION

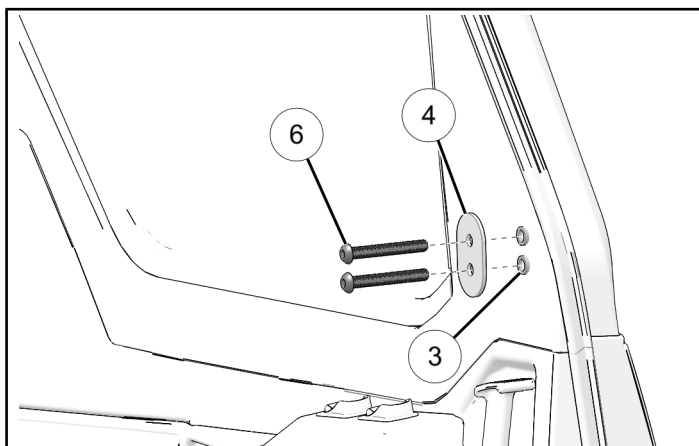
#### NOTICE

Left side shown; right side similar.

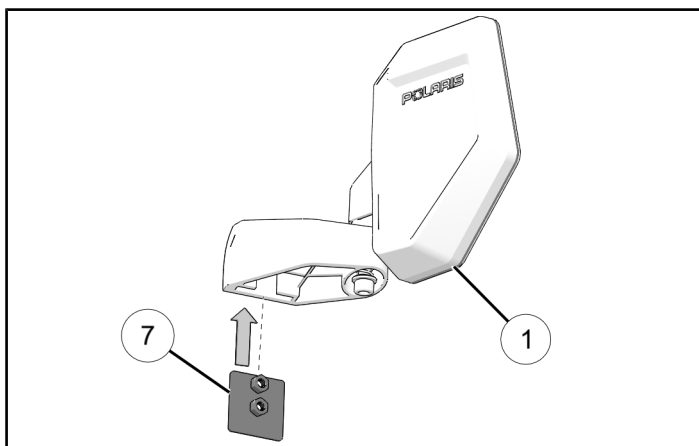
1. Install one spacer ③ into each pre-drilled hole on the door.



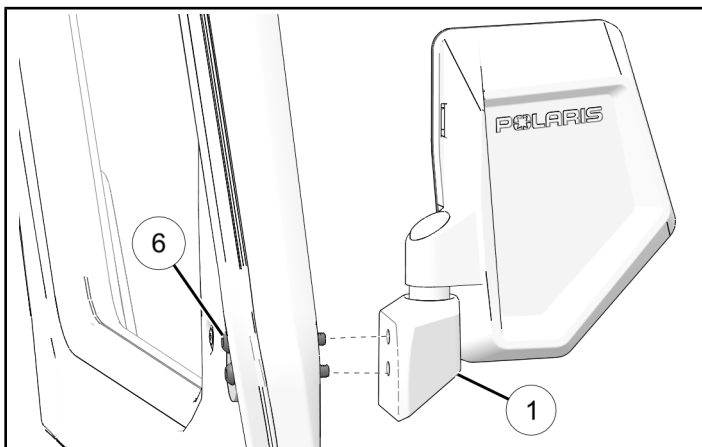
2. Install mirror backer plate ④ to the inside of the door with two screws ⑥ through two spacers ③.



3. Slide weld nut backer plate ⑦ into mirror arm ①.



4. Install the mirror assembly ① to the door with two screws ⑥.



5. Torque screws to specification.

#### TORQUE

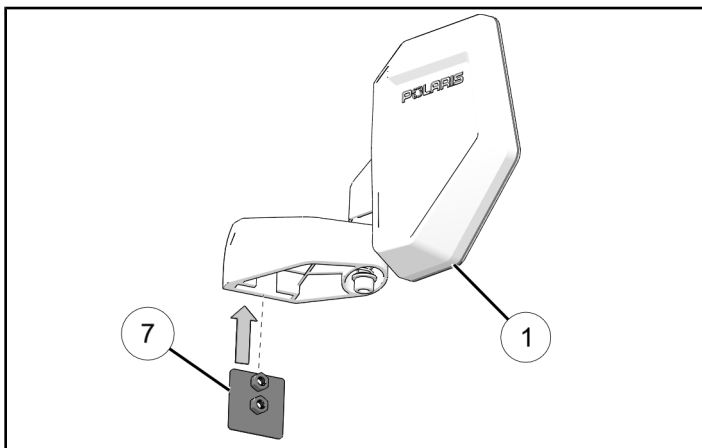
Mirror Screws ⑥:  
**14 ft-lbs (19 N·m)**

### MIDSIZE MIRROR INSTALLATION

#### NOTICE

Left side shown; right side similar

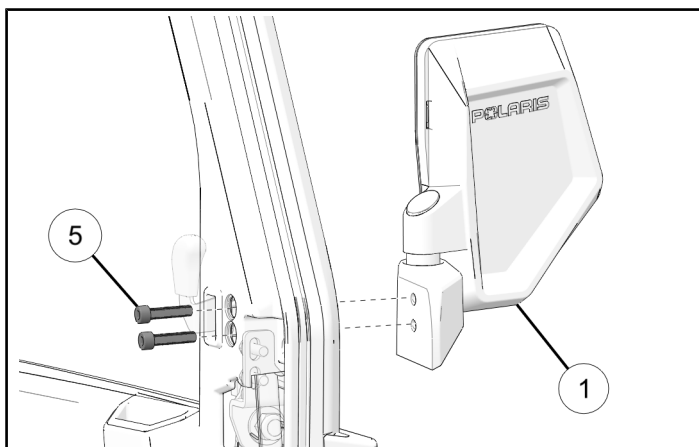
1. Slide weld nut backer plate ⑦ into mirror arm ①.



2. Install the mirror assembly ① to the door with two screws ⑤.

#### NOTICE

Install both screws through the pre-drilled holes on the inside of the door.

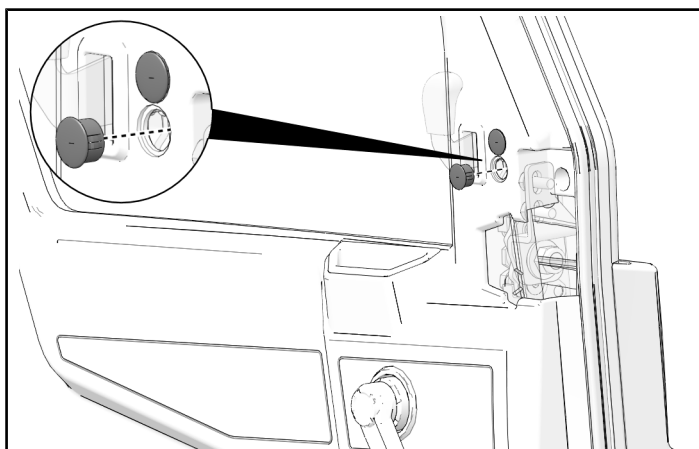


3. Torque screws to specification.

#### TORQUE

Mirror Screws ⑤:  
**14 ft-lbs (19 N·m)**

4. Install two retained caps to the inside of the door.

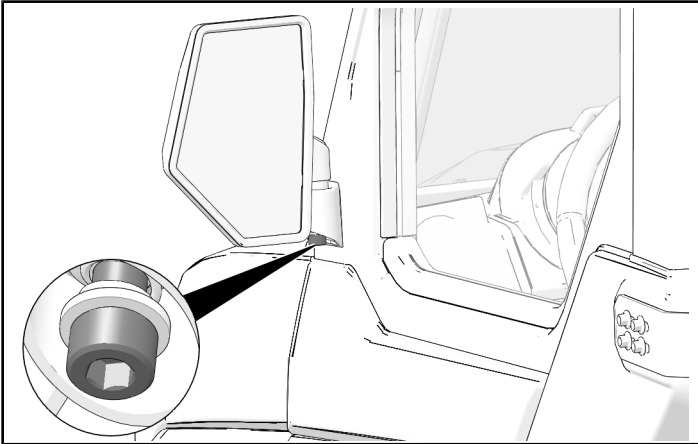


## OPERATION

1. Adjust mirrors for best visibility.
2. Tighten pivot bolt as needed.

### IMPORTANT

Mirror pivot joint is designed to give way under impact to avoid potential damage. Avoid over tightening pivot bolt when in areas or situations where mirror impacts are more likely to happen. Over tightening pivot bolts could cause damage to the side mirrors in the event of an impact.



## INSTRUCTION FEEDBACK FORM

A feedback form has been created for the installer to provide any comments, questions or concerns about the installation instructions. The form is viewable on mobile devices by scanning the QR code or by clicking [HERE](#) if viewing on a PC.

