

# PLATFORM RACK KIT



P/N 2889236; 2889237; 2889590; 2889860

## MISSING OR DAMAGED PARTS

Before beginning assembly, inspect the kit and its component(s) to be sure all parts and tools are accounted for and not damaged. If missing parts or parts are damaged, please contact your Selling Dealer for assistance.

If your accessory was purchased online, please contact POLARIS® customer service at **1-800-POLARIS** (US & Canada only).

## APPLICATION

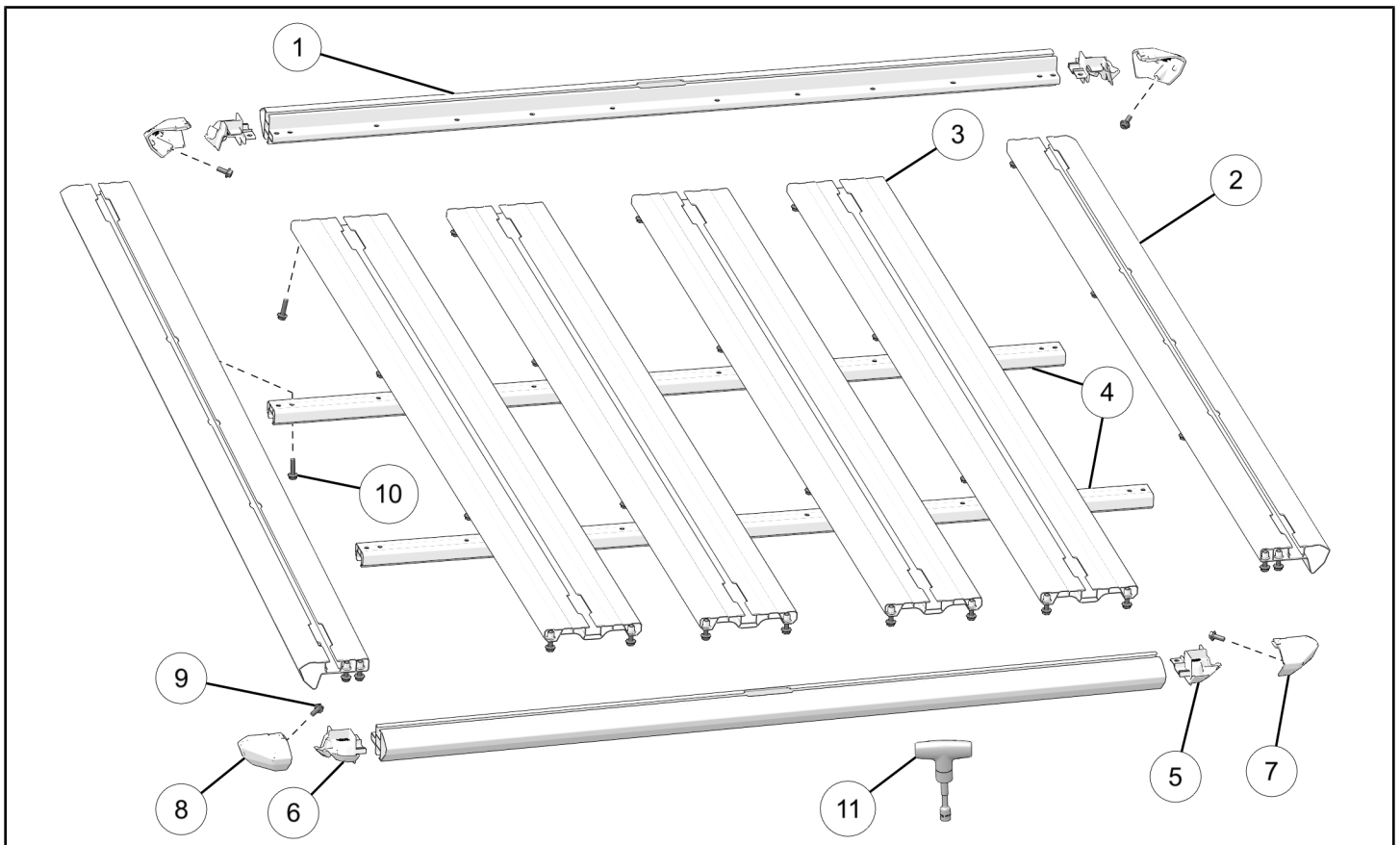
Verify accessory fitment at [www.polaris.com](http://www.polaris.com).

## REQUIRED SOLD SEPARATELY

Only parts for installation of the Platform Rack Kit are included. For complete installation, the following additional kit is required (sold separately):

- *Back Bone Kit*, See the appropriate kit for your vehicle.

## KIT CONTENTS



REF	QTY	PART DESCRIPTION	P/N AVAILABLE SEPARATELY	AVAILABLE SERVICE KIT
1	2	Platform Extrusion, Front and Rear	n/a	n/a
2	2	Platform Extrusion, Side	n/a	n/a
3	4	Platform Planks	n/a	n/a
4	1	Underbar Extrusion (P/N 2889590, P/N 2889236 and P/N 2889860)	n/a	n/a
	2	Underbar Extrusion (P/N 2889237)	n/a	n/a
5	2	Corner Base, Right	n/a	2209074
6	2	Corner Base, Left	n/a	2209074
7	2	Corner Cover, Right	n/a	2209074
8	2	Corner Cover, Left	n/a	2209074
9	4	Bolt, Hex Flange, M6 x 1.0 x 12 mm	n/a	2209074
10	36	Bolt, Hex Flange, M6 x 1.0 x 25 mm (P/N 2889590 and P/N 2889236)	n/a	n/a
	42	Bolt, Hex Flange, M6 x 1.0 x 25 mm (P/N 2889860)	n/a	n/a
	48	Bolt, Hex Flange, M6 x 1.0 x 25 mm (P/N 2889237)	n/a	n/a
11	1	Torque Tool, 53 in-lbs (6 N·m)	n/a	2209475

## TOOLS REQUIRED

- Safety Glasses
- Socket Set, Metric
- Torque Tool (provided)

## IMPORTANT

Your Platform Rack Kit is exclusively designed for your vehicle. Please read the installation instructions thoroughly before beginning. Installation is easier if the vehicle is clean and free of debris. For your safety, and to ensure a satisfactory installation, perform all installation steps correctly in the sequence shown.

## INSTALLATION INSTRUCTIONS

### ACCESSORY INSTALLATION

#### PLATFORM RACK ASSEMBLY

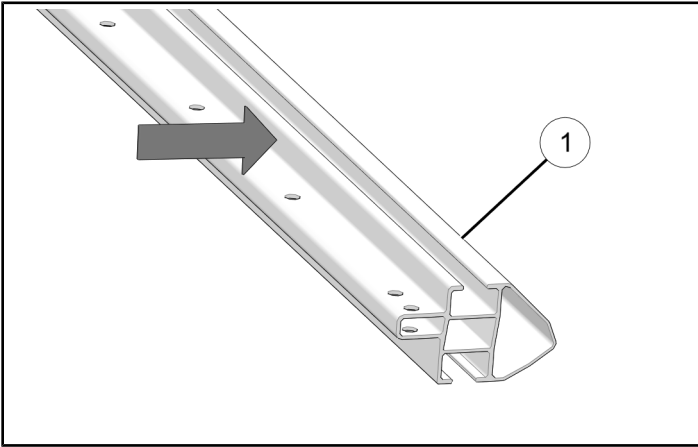
##### TIP

Assemble platform rack on soft surface to prevent damage to platform.

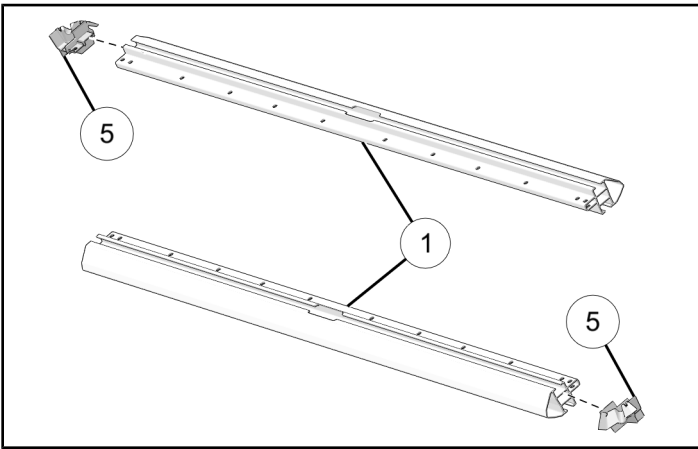
##### NOTICE

Platform rack will be assembled with bottom of rack facing up.

1. Set front and rear extrusion ① onto soft surface with shorter edge facing up.



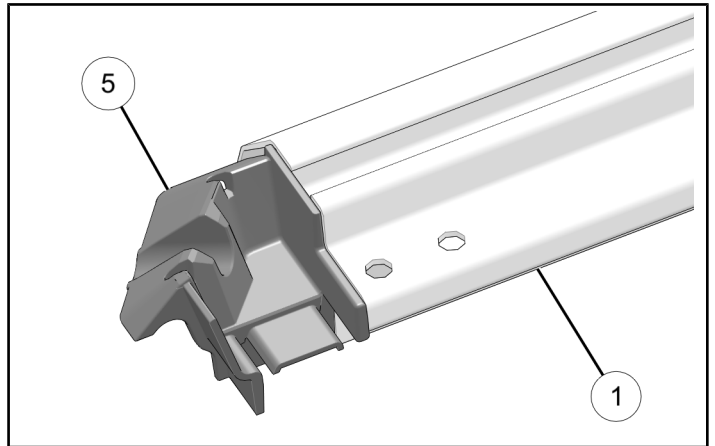
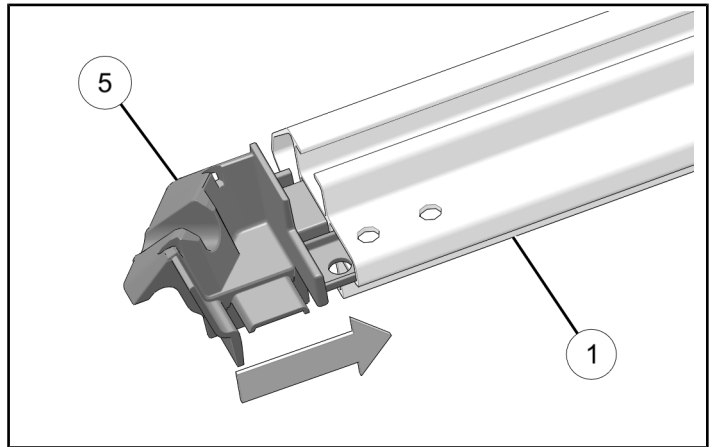
2. Install two right-hand corner base pieces ⑤ to front and rear extrusions ①.



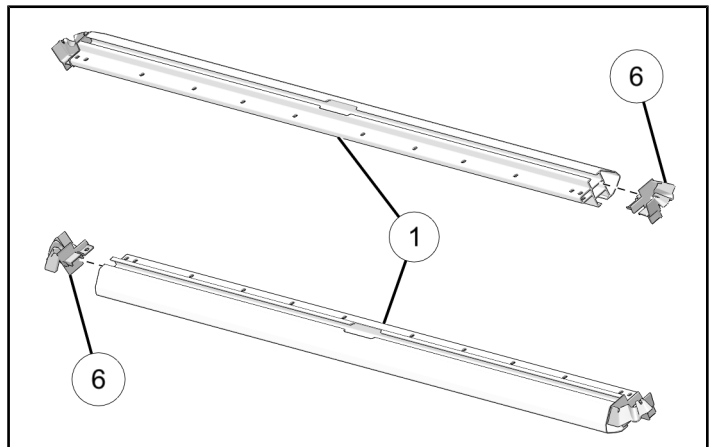
3. Insert right-hand corner base pieces ⑤ inside the channel on each end of extrusion ①.

**NOTICE**

Make sure holes on corner base pieces align with holes on extrusion.



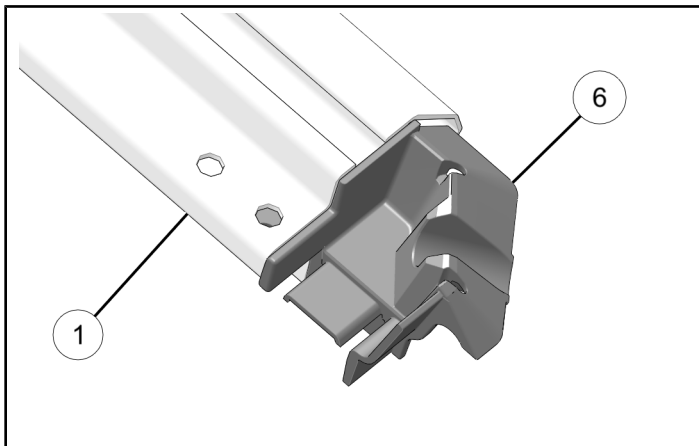
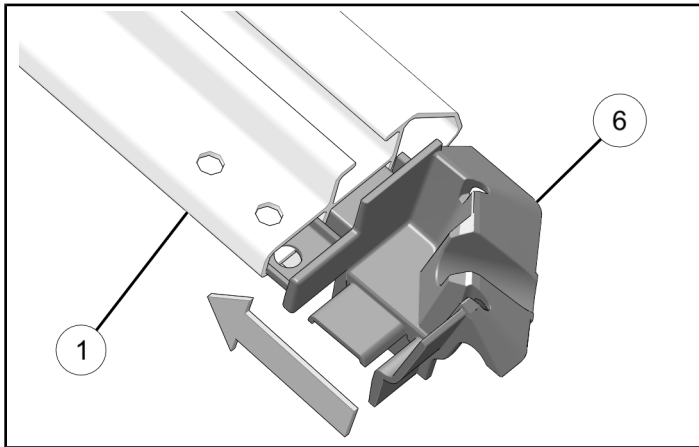
4. Install two left-hand corner base pieces ⑥ to front and rear extrusions ①.



5. Insert left-hand corner base pieces ⑥ inside the channel on each end of extrusion ①.

**NOTICE**

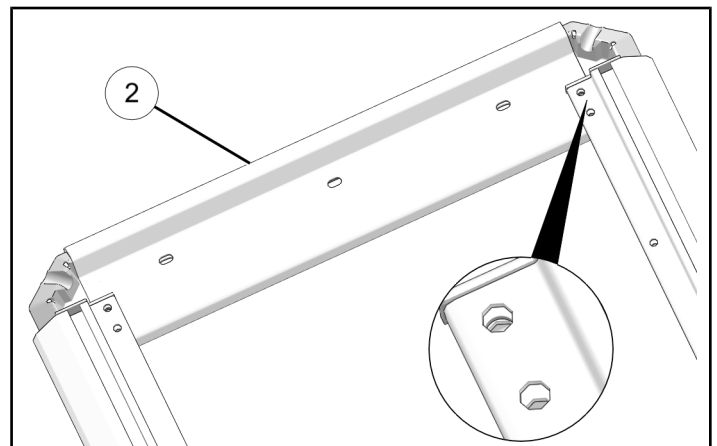
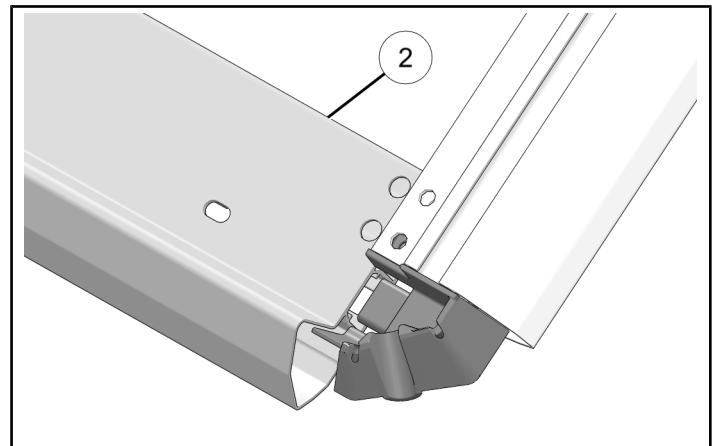
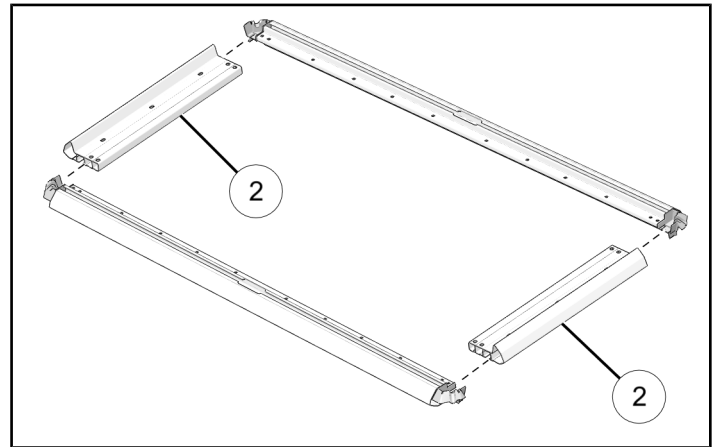
Make sure holes on corner base pieces align with holes on extrusion.



6. Slide two side extrusions ② into each corner base.

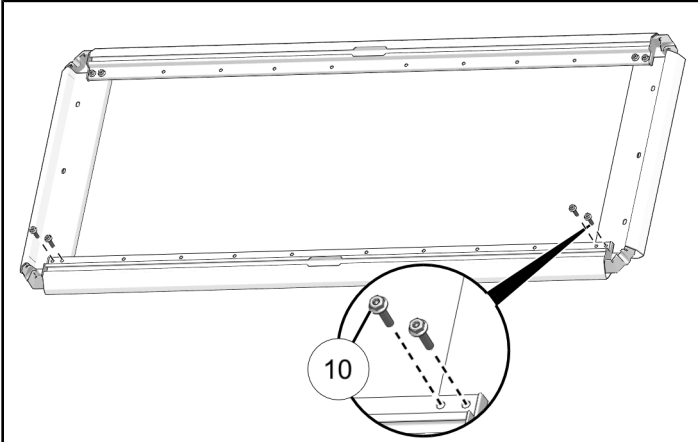
**IMPORTANT**

Make sure the holes on the side extrusions align with the holes on the front and rear extrusion bar assemblies.



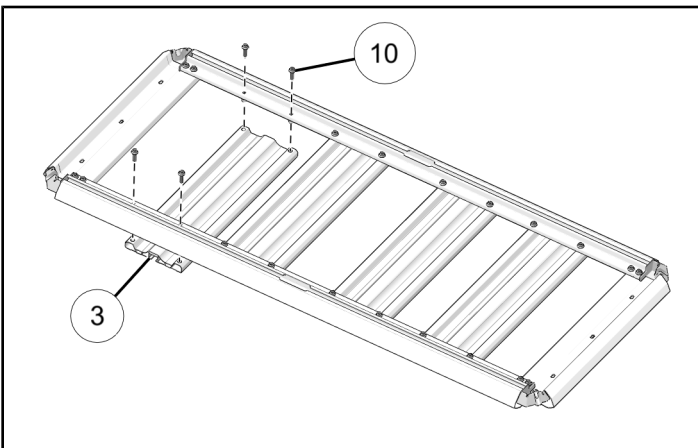
7. Loosely install side extrusions with eight bolts ⑩.

Do not torque bolts at this time.



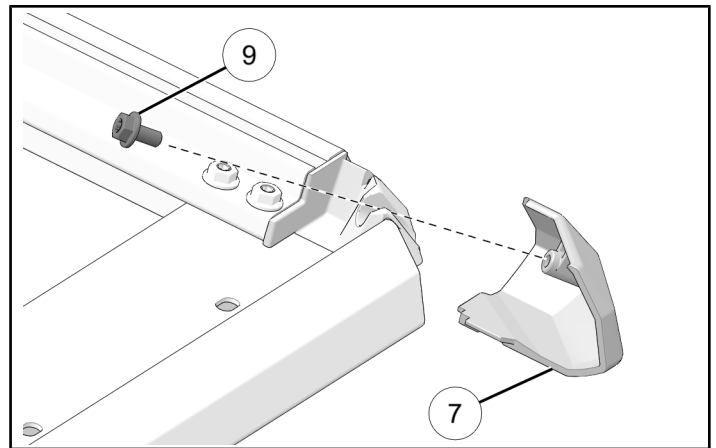
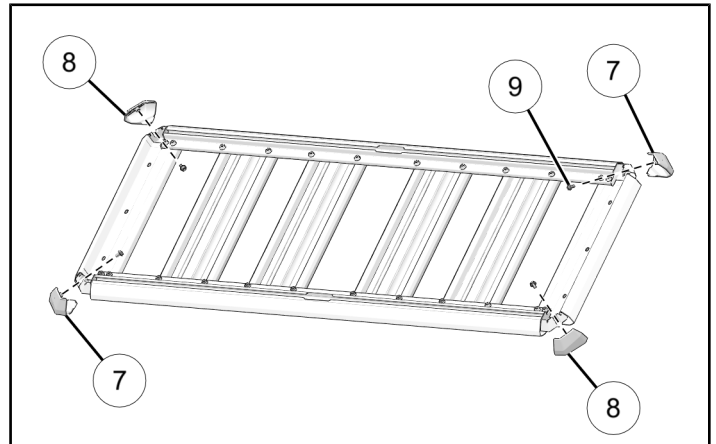
8. Loosely install four platform planks ③ to platform frame assembly with sixteen bolts ⑩.

Do not torque bolts at this time.



9. Loosely attach two right-hand ⑦ and two left-hand ⑧ corner covers with four bolts ⑨.

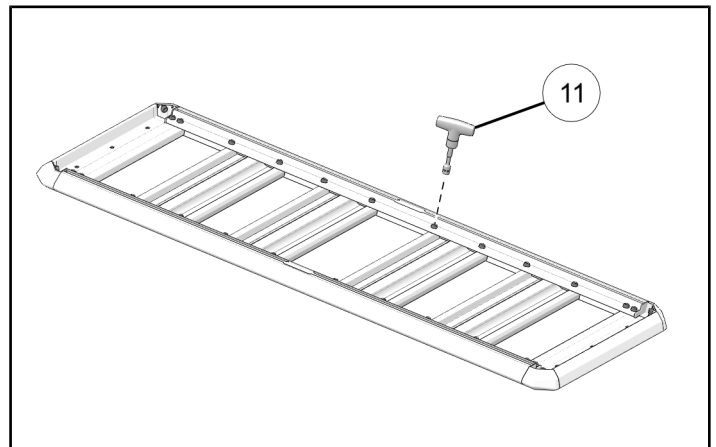
Do not torque bolts at this time.



10. Torque all bolts with torque tool ⑪.

**NOTICE**

Turn each bolt with torque tool until it clicks.



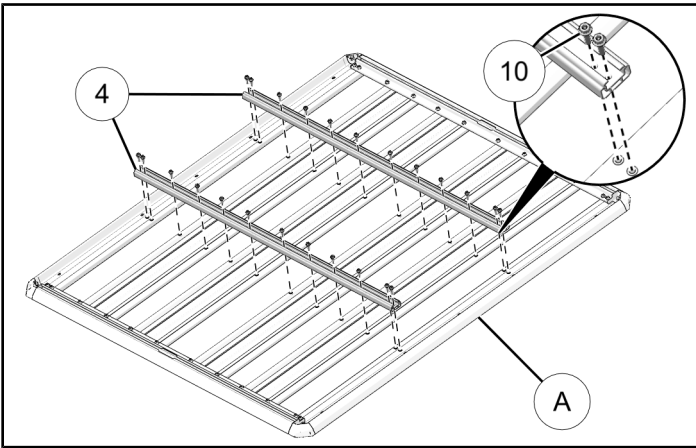
## DOUBLE UNDERBAR EXTRUSION INSTALLATION

### IMPORTANT

Double underbar extrusion platform rack is used on crew vehicles only.

1. Install two underbar extrusions ④ to platform assembly ① using twenty-four bolts ⑩.

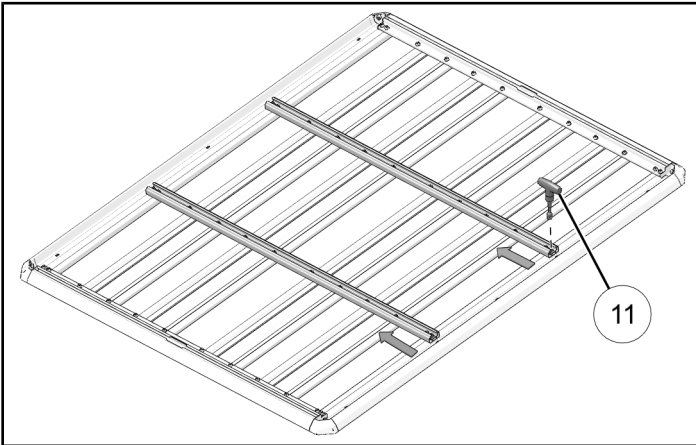
Do not torque bolts at this time.



2. Torque all bolts sequentially from one end with torque tool ⑪.

### NOTICE

Turn each bolt with torque tool until it clicks.



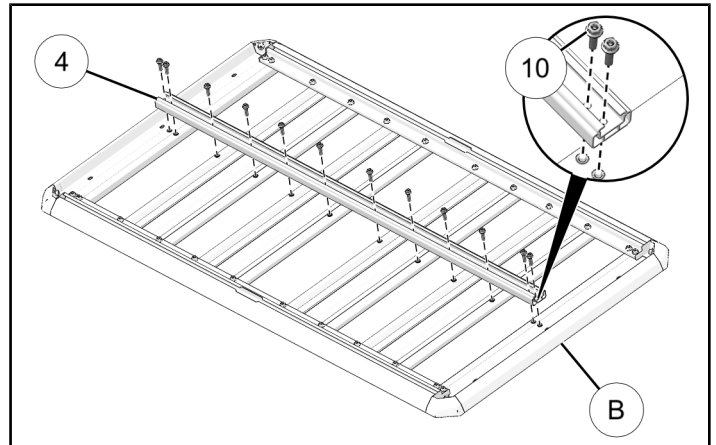
## SINGLE UNDERBAR EXTRUSION INSTALLATION

### IMPORTANT

Single underbar extrusion platform rack can be used on two-seat and three-seat vehicles and on the cargo box.

1. Install one underbar extrusion ④ to platform assembly ② using twelve bolts ⑩.

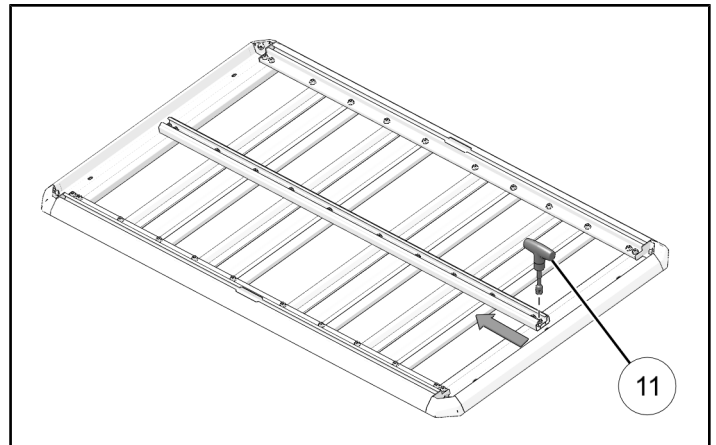
Do not torque bolts at this time.



2. Torque all bolts sequentially from one end with torque tool ⑪.

### NOTICE

Turn each bolt with torque tool until it clicks.



## PLATFORM RACK LOAD RATINGS

### IMPORTANT

Weight limits of Roof/Cargo Box Platform Racks are listed below. To prevent damage to Roof/Cargo Box Platform Rack, never exceed the standard weight limits listed below.

- P/N 2889590 75 lb (34 kg)
- P/N 2889237 150 lb (68 kg)
- P/N 2889236 (roof mounting) 150 lb (68 kg)
- P/N 2889236 (cargo bed mounting) 75 lb (34 kg)
- P/N 2889860 (roof mounting) 150 lb (68 kg)
- P/N 2889860 (cargo bed mounting) 75 lb (34 kg)