

REAR BUMPER KIT



P/N 2884498;2889331

BEFORE YOU BEGIN

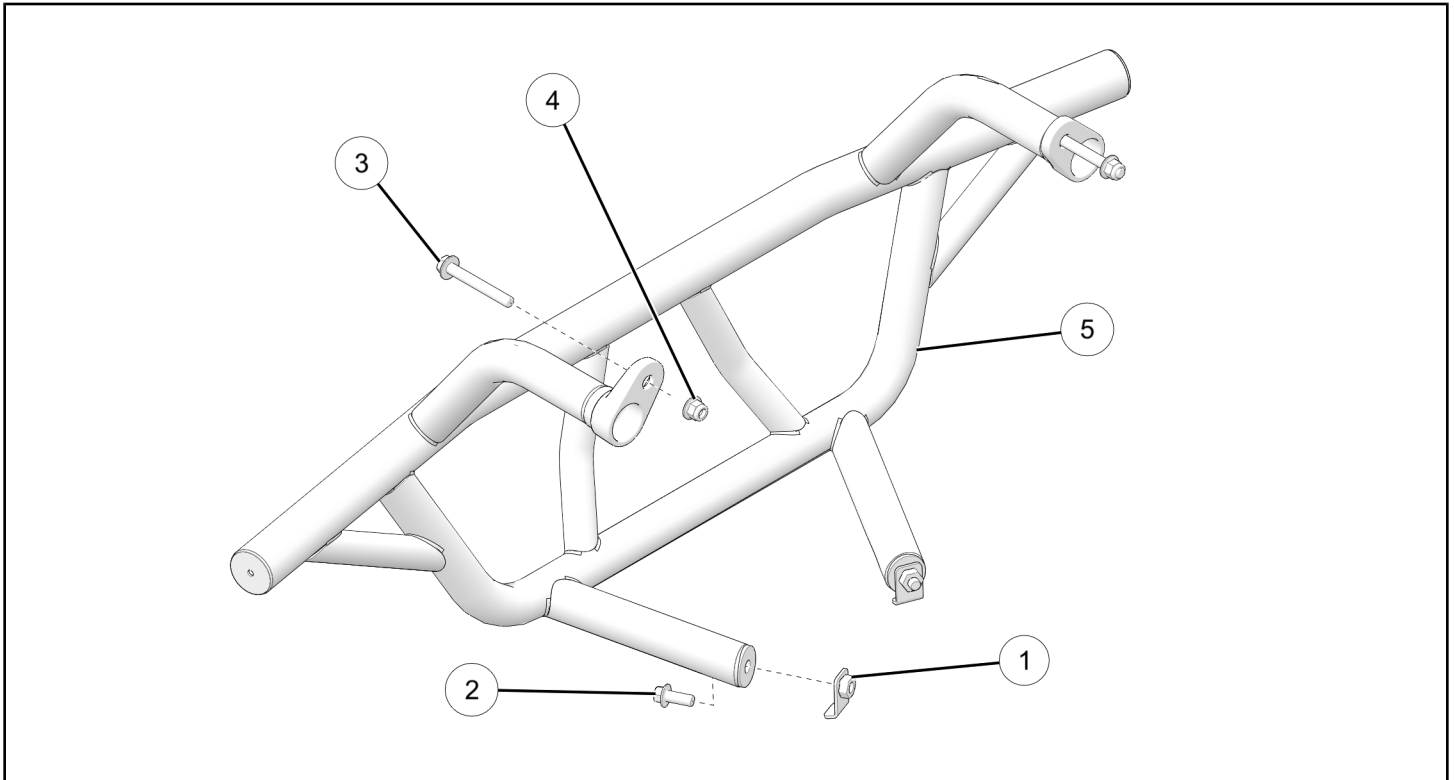
Read these instructions and check to be sure all parts and tools are accounted for. Please retain these installation instructions for future reference and parts ordering information.

APPLICATION

Verify accessory fitment at www.polaris.com.

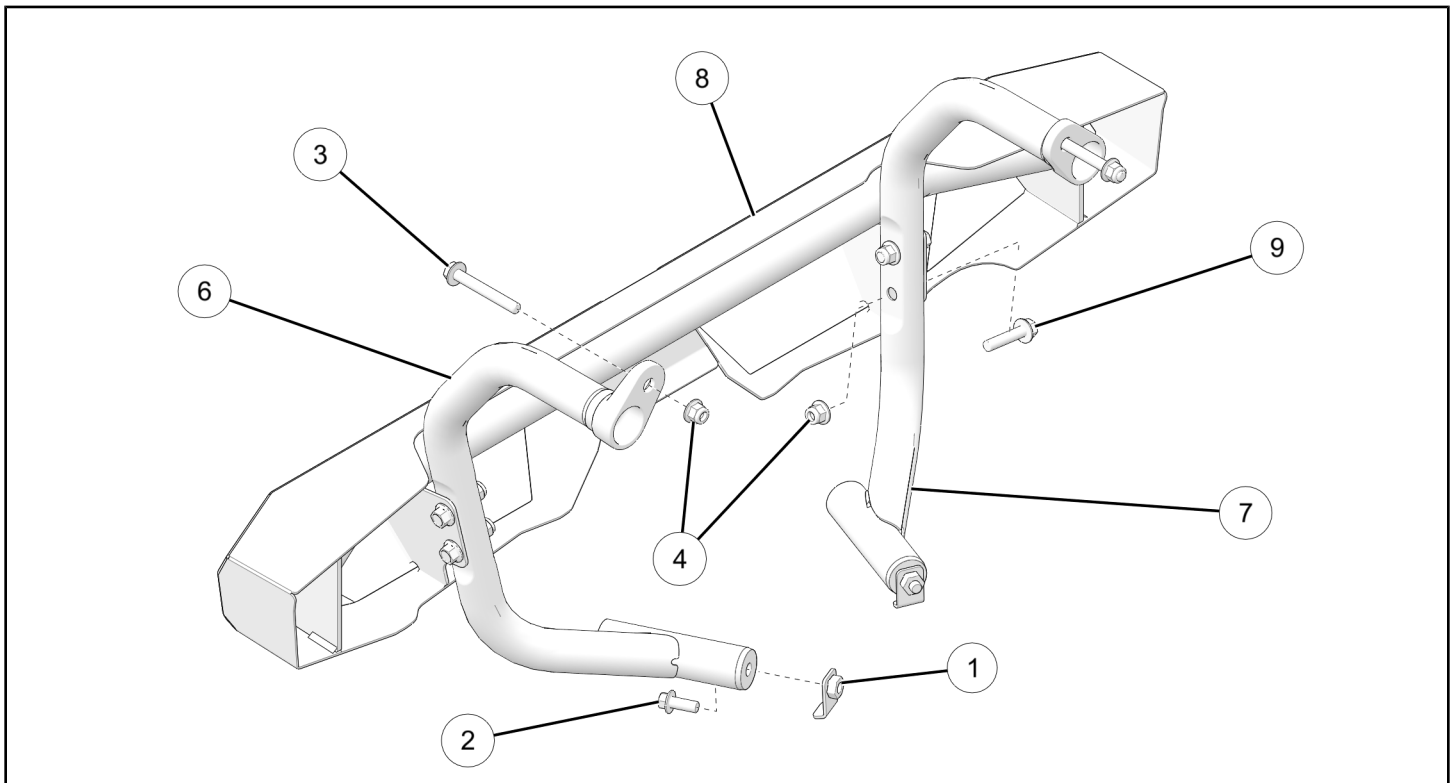
KIT CONTENTS

STANDARD REAR BUMPER KIT P/N 2884498



REF	QTY	PART DESCRIPTION	P/N AVAILABLE SEPARATELY	AVAILABLE SERVICE KIT
1	2	Plate – Lower, Nut	1027378	2209075
2	2	Screw - Hex Flange Head M10 x 1.5 x 25 mm	7521147	2209075
3	2	Screw - Hex Flange Head M10 x 1.5 x 75 mm	7521231	2209075
4	2	Nyloc Nut - M10 x 1.5 mm	7547423	2209075
5	1	Rear Bumper, Basic	n/a	n/a

PREMIUM REAR BUMPER KIT P/N 2889331



REF	QTY	PART DESCRIPTION	P/N AVAILABLE SEPARATELY	AVAILABLE SERVICE KIT
1	1	Plate – Lower, Nut	1027378	2209079
2	2	Screw - Hex Flange Head M10x1.5x25 mm	7521147	2209079
3	2	Screw - Hex Flange Head M10x1.5x75 mm	7521231	2209079
4	6	Nyloc Nut- M10x1.5 mm	7547423	2209079
6	1	Rear Bumper Mount, RH	n/a	n/a
7	1	Rear Bumper Mount, LH	n/a	n/a
8	1	Rear Bumper, Premium	n/a	n/a
9	4	Screw - Hex Flange Head M10x1.5x45 mm	7520013	2209079

TOOLS REQUIRED

- Safety Glasses
- Socket Set, Metric
- Torque Wrench
- Wrench Set, Metric

IMPORTANT

Your Rear Bumper Kit is exclusively designed for your vehicle. Please read the installation instructions thoroughly before beginning. Installation is easier if the vehicle is clean and free of debris. For your safety, and to ensure a satisfactory installation, perform all installation steps correctly in the sequence shown.

INSTALLATION INSTRUCTIONS

VEHICLE PREPARATION

GENERAL

1. Park vehicle on a flat surface.

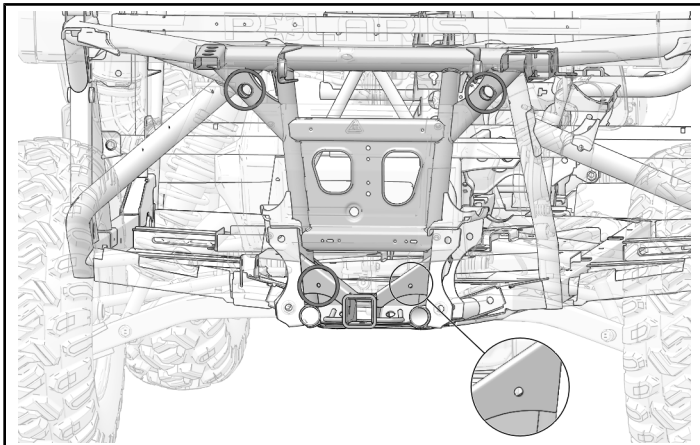
2. Shift vehicle into PARK.

3. Turn key to OFF position and remove key.

ACCESSORY INSTALLATION

IDENTIFICATION OF MOUNTING POINTS

1. Identify the four mounting points on the rear of the chassis.



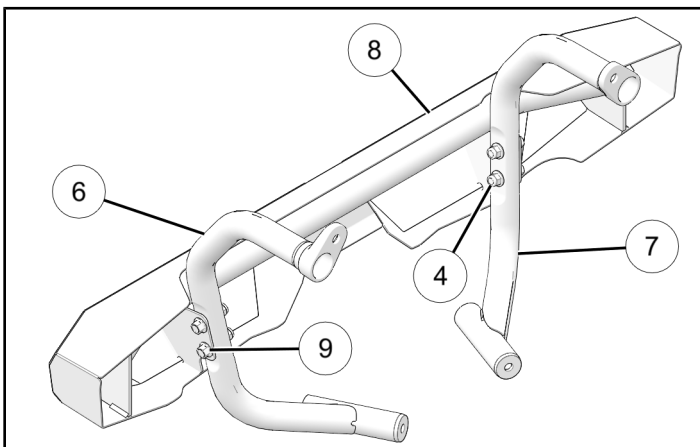
PREMIUM BUMPER ASSEMBLY

Premium bumper only. Standard bumper proceed to Bumper Installation.

1. Assemble the premium bumper as shown. Use two hex screws ⑨ and two nyloc nuts ④ to attach each bumper mount ⑥⑦ to the bumper ⑧. Torque screws to specification.

TORQUE

Hex Screws ⑨:
20 ft-lbs (27 N·m)



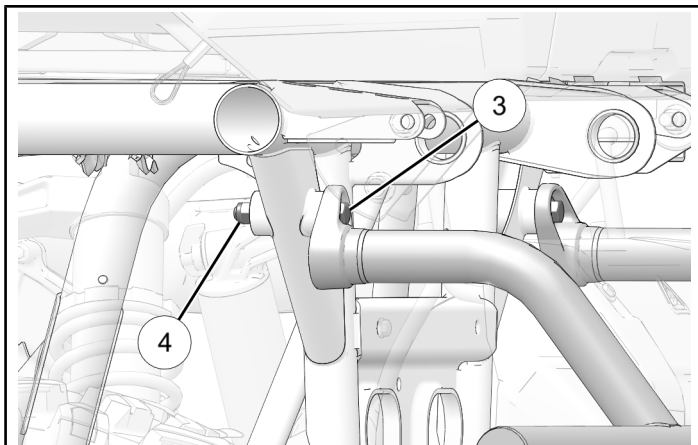
BUMPER INSTALLATION

NOTICE

Standard bumper shown, premium bumper similar.

1. Assemble bumper to the upper mounting points. Use hex screw ③ and nyloc nut ④ to secure the bumper to each upper mounting point. Do not tighten the screws at this time.

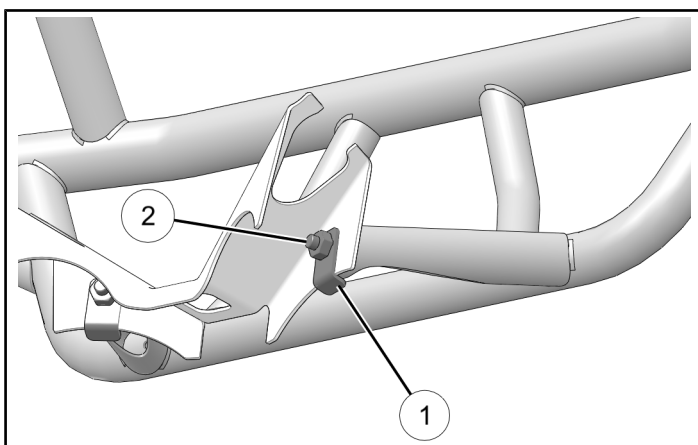
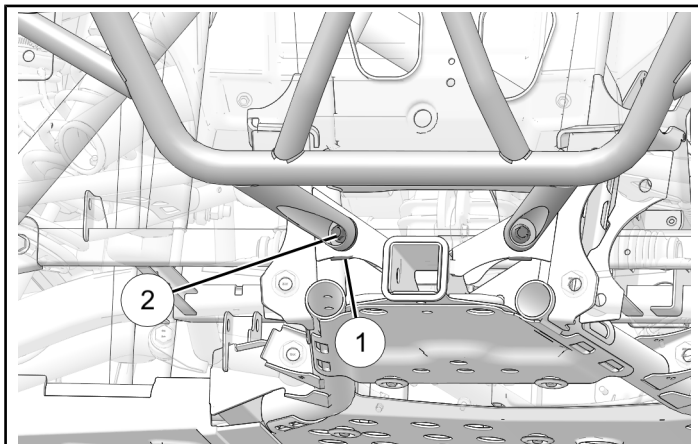
DO NOT torque fasteners at this time.



2. Assemble bumper to the lower mounting points. Use hex screw ② and nut plate ① to secure the bumper to each lower mounting point. Tighten top and bottom screws to specification.

TORQUE

Hex Screws ② ③:
37 ft-lbs (50 N·m)



INSTRUCTION FEEDBACK FORM

A feedback form has been created for the installer to provide any comments, questions or concerns about the installation instructions. The form is viewable on mobile devices by scanning the QR code or by clicking [HERE](#) if viewing on a PC.

