

PLOW ANGLE KIT



P/N 2889052

BEFORE YOU BEGIN

Read these instructions and check to be sure all parts and tools are accounted for. Please retain these installation instructions for future reference and parts ordering information.

APPLICATION

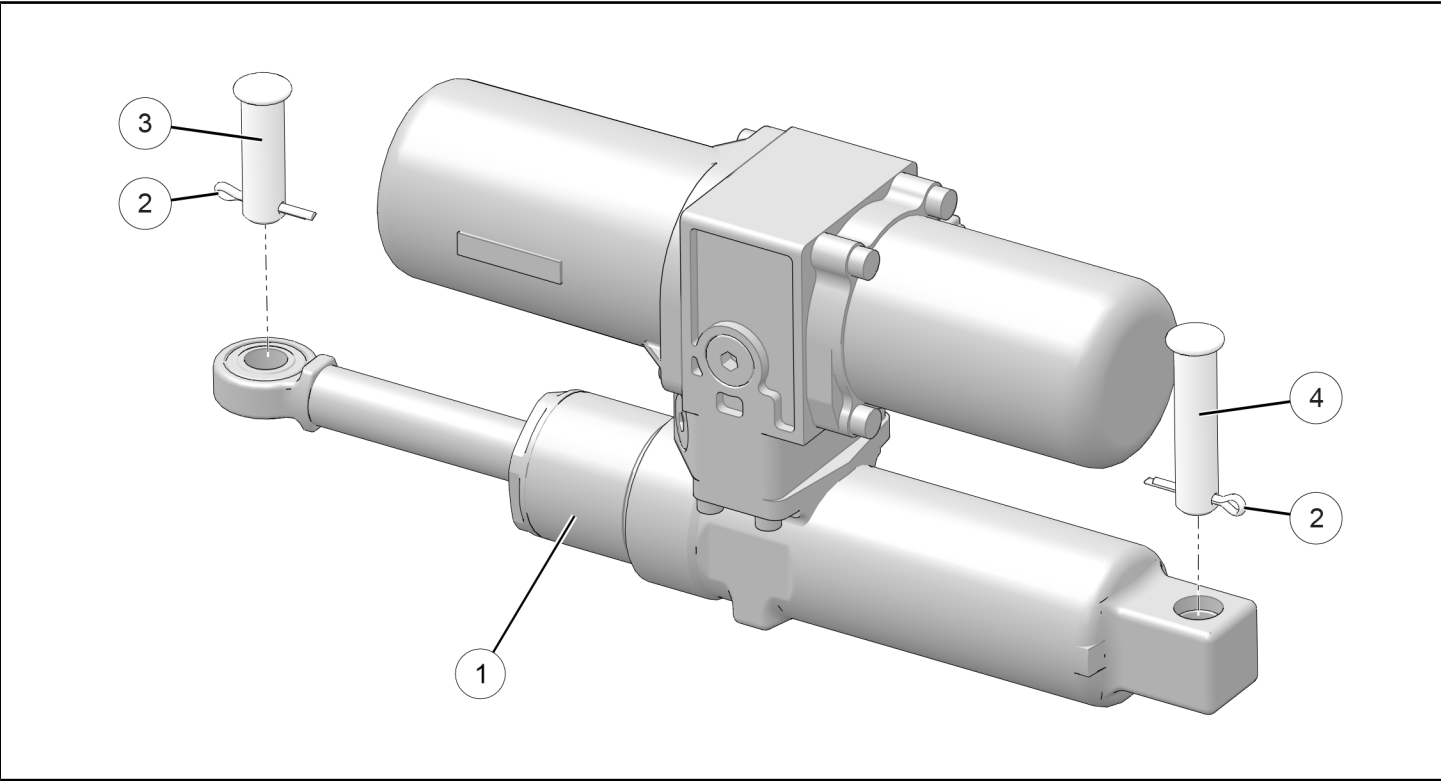
Verify accessory fitment at www.polaris.com.

REQUIRED SOLD SEPARATELY

Only parts for installation of the Plow Angle Kit are included. Prior installation of the following additional kits are also required (sold separately):

- *Plow System (Mount, Frame, Lift Method, and Blade)*
- *Plow Controller Kit, P/N 2883391 (or equivalent)*

KIT CONTENTS



REF	QTY	PART DESCRIPTION	P/N AVAILABLE SEPARATELY	AVAILABLE SERVICE KIT
1	1	Cylinder, Plow Angle	2415814	n/a
2	2	Cotter Pin - 3 X 25	n/a	2205068
3	1	Pin, Clevis - 14 X 45	n/a	2205068
4	1	Pin, Clevis - 14 X 60	n/a	2205068
5	2	Cable Tie (not shown)	7080761	n/a

TOOLS REQUIRED

- Safety Glasses

- Pliers, Slip Joint

IMPORTANT

Your Plow Angle Kit is exclusively designed for your vehicle. Please read the installation instructions thoroughly before beginning. Installation is easier if the vehicle is clean and free of debris. For your safety, and to ensure a satisfactory installation, perform all installation steps correctly in the sequence shown.

INSTALLATION INSTRUCTIONS

VEHICLE PREPARATION

GENERAL

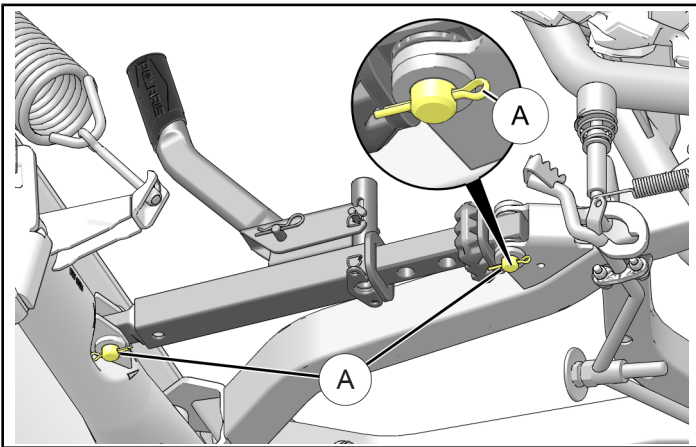
1. Park vehicle on a flat surface.
2. Shift vehicle into PARK.
3. Turn key to OFF position and remove key.

ACCESSORY INSTALLATION

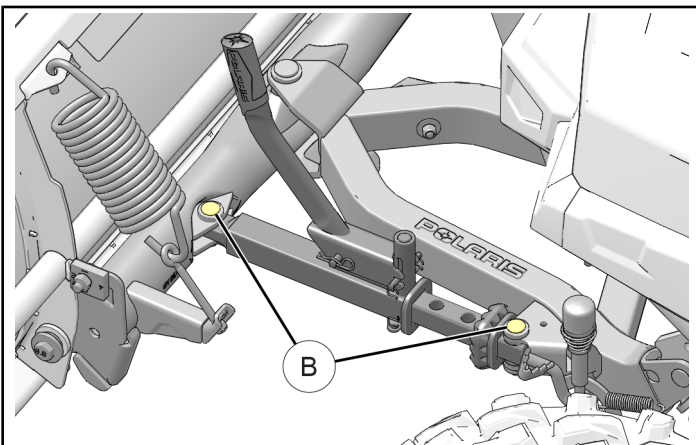
⚠ CAUTION

Manual angle adjustment mechanism is heavy. Support mechanism as required during removal to prevent injury.

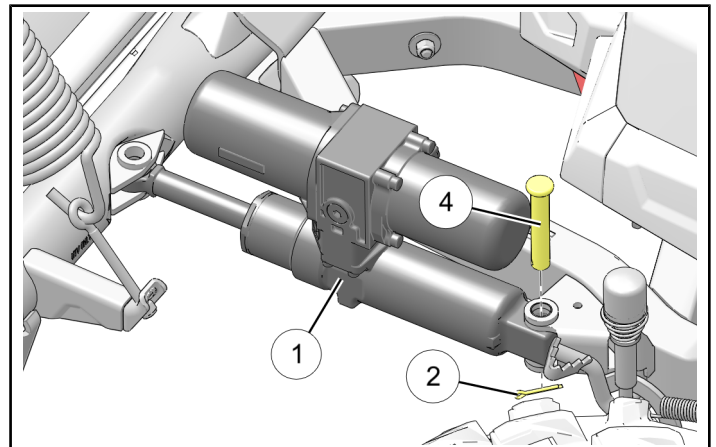
1. Remove and discard two cotter pins Ⓐ.



2. Remove and discard two clevis pins Ⓑ from each end of manual angle adjustment mechanism.



3. Carefully remove manual angle adjustment mechanism out of plow frame brackets. Set aside or discard.
4. Install rearward end of angle cylinder ① to plow frame brackets using clevis pin ④ and cotter pin ②.



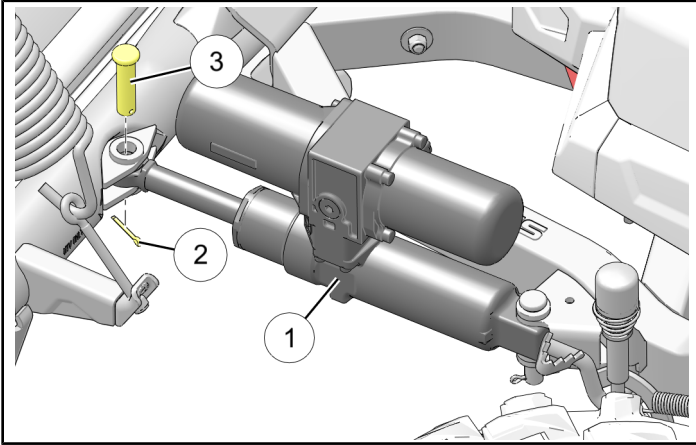
5. Attach connector on angle cylinder ① to mating TILT connector from Plow Controller.

TIP

See Plow Controller Kit instructions for details.

6. Turn ignition switch to **ACC** position.
7. Lift blade off ground high enough to manually swing blade right and left.
8. Turn ignition switch to **OFF** position and remove key.
9. Move blade into rod end fitting on front of angle cylinder ①.

10. Install forward end of angle cylinder ① to plow using clevis pin ③ and cotter pin ②.



11. Install cable ties to hold harnesses away from sharp edges or moving parts.
12. Turn ignition switch to **ACC** position.
13. Lower blade.
14. Turn ignition switch to **OFF** position and remove key.

INSTRUCTION FEEDBACK FORM

A feedback form has been created for the installer to provide any comments, questions or concerns about the installation instructions. The form is viewable on mobile devices by scanning the QR code or by clicking [HERE](#) if viewing on a PC.

