

PLOW ANGLE KIT



P/N 2889029

MISSING OR DAMAGED PARTS

Before beginning assembly, inspect the kit and its component(s) to be sure all parts and tools are accounted for and not damaged. If missing parts or parts are damaged, please contact your Selling Dealer for assistance.

If your accessory was purchased online, please contact POLARIS® customer service at **1-800-POLARIS** (US & Canada only).

APPLICATION

Verify accessory fitment at www.polaris.com.

IMPORTANT

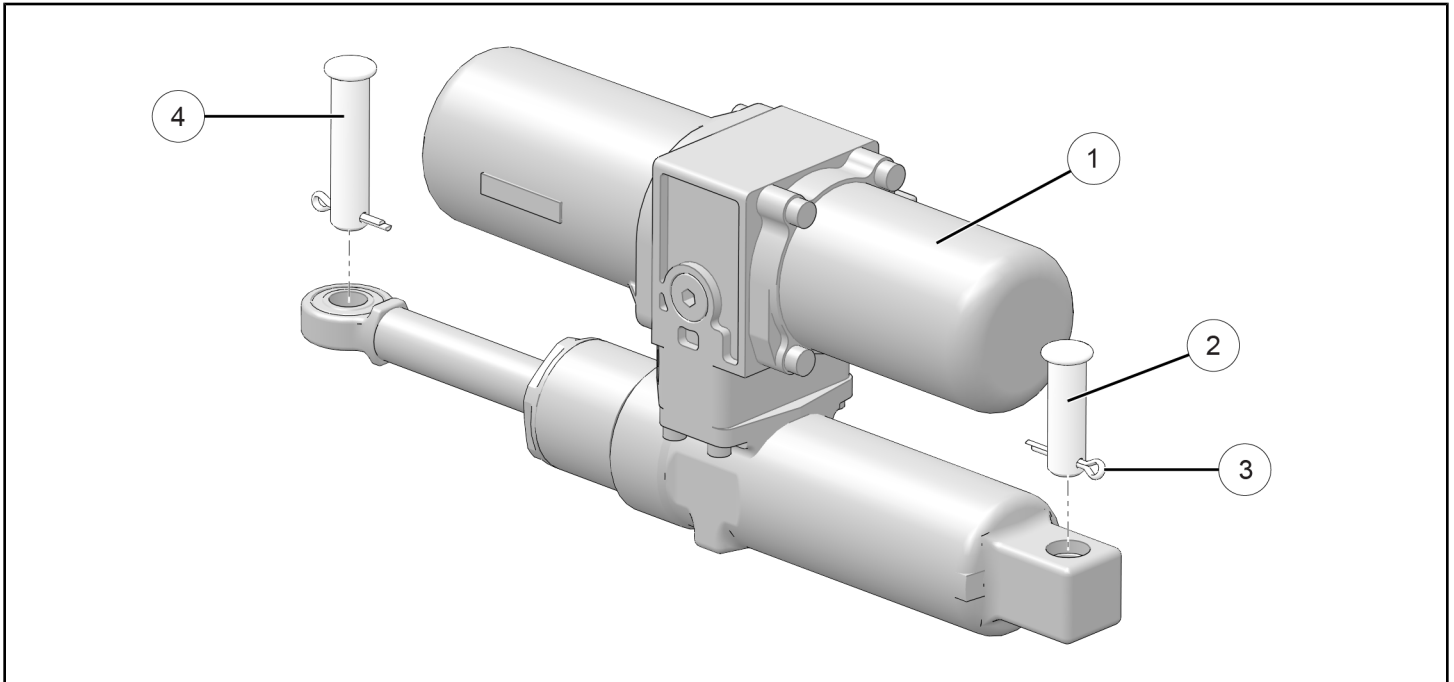
P/N 9939852 *Plow Angle Kit* is not compatible with Xpedition® vehicles that are equipped with tracks.

REQUIRED SOLD SEPARATELY

Only parts for installation of the Plow Angle Kit are included. Prior installation of the following additional kits is also required (sold separately):

- *Plow System*, (frame, lift method, and blade)
- *Plow Controller Kit*, P/N 2883247, or equivalent

KIT CONTENTS



REF	QTY	PART DESCRIPTION	P/N AVAILABLE SEPARATELY	AVAILABLE SERVICE KIT
1	1	Cylinder, Plow Angle	2415813	n/a
2	1	Pin, Clevis - 14 x 54	n/a	2204892

REF	QTY	PART DESCRIPTION	P/N AVAILABLE SEPARATELY	AVAILABLE SERVICE KIT
3	2	Cotter Pin - 3 x 25	n/a	2204892
4	1	Pin, Clevis - 14 x 78	n/a	2204892
5	2	Cable Tie (not shown)	7080492	n/a

TOOLS REQUIRED

- Safety Glasses
- Pliers, Slip Joint

IMPORTANT

Your Plow Angle Kit is exclusively designed for your vehicle. Please read the installation instructions thoroughly before beginning. Installation is easier if the vehicle is clean and free of debris. For your safety, and to ensure a satisfactory installation, perform all installation steps correctly in the sequence shown.

INSTALLATION INSTRUCTIONS

VEHICLE PREPARATION

GENERAL

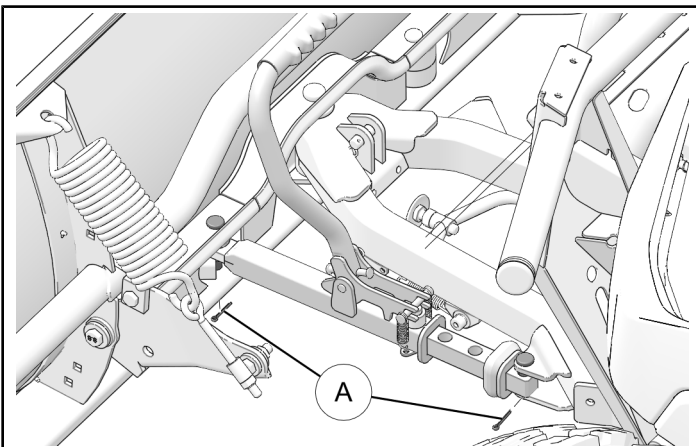
1. Park vehicle on flat surface.
2. Shift vehicle into **PARK**.
3. Turn ignition switch to **OFF** position and remove key.

ACCESSORY INSTALLATION

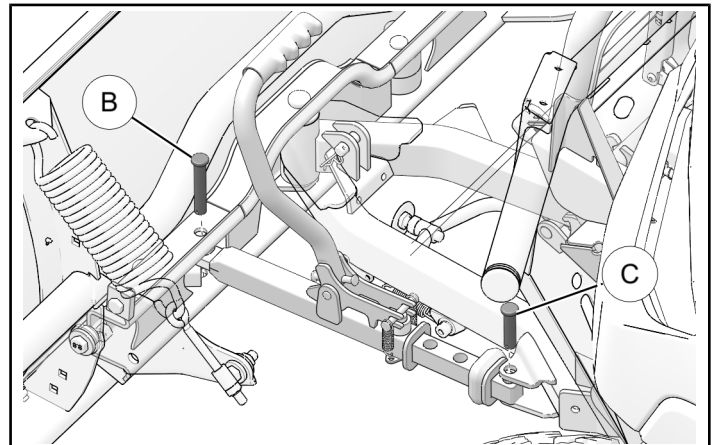
⚠ CAUTION

Manual angle adjustment mechanism is heavy. Put a support below the mechanism during removal to prevent injury.

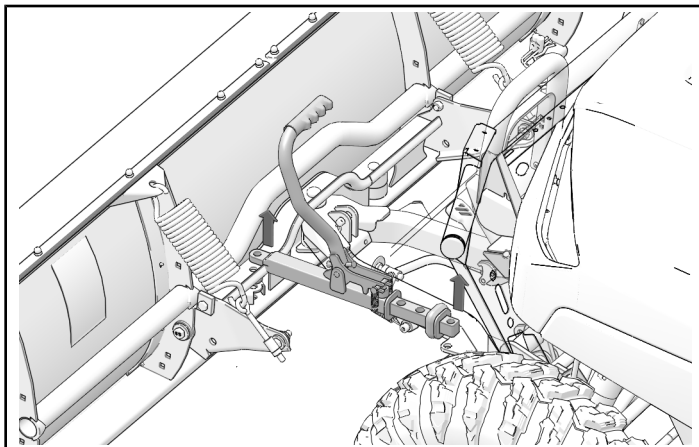
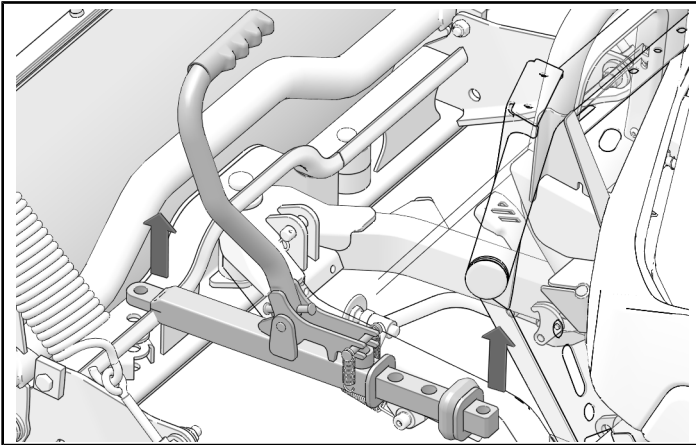
1. Remove and discard two cotter pins (A).



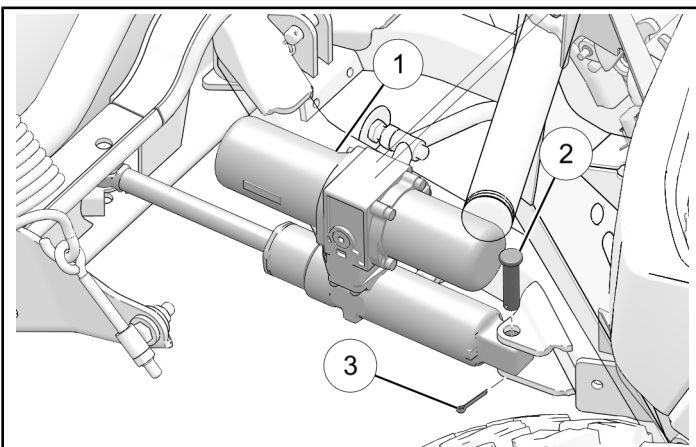
2. Remove and discard clevis pin (B) and clevis pin (C) from each end of manual angle adjustment mechanism.



3. Remove and discard manual angle adjustment mechanism from plow frame brackets.



4. Install rearward end of angle cylinder ① to plow frame brackets using clevis pin ② and cotter pin ③.

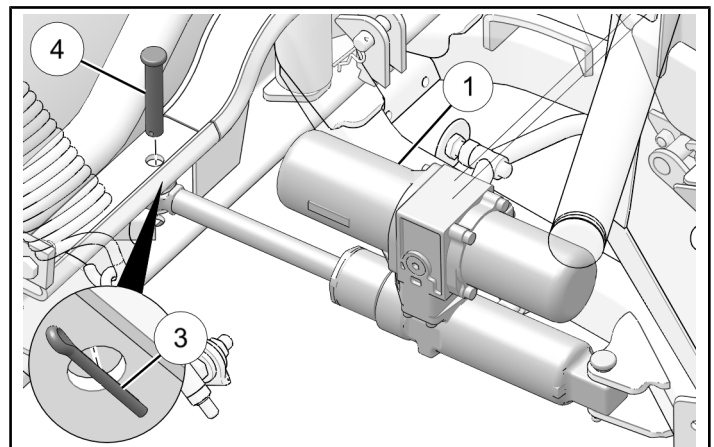


5. Attach connector on angle cylinder to mating **TILT** connector from Plow Controller.

TIP

See Plow Controller Kit instructions for details.

6. Turn ignition switch to **ACC** position.
7. Lift blade off ground high enough to manually move blade right and left.
8. Turn ignition switch to **OFF** position and remove key.
9. Move blade into rod end fitting on front of angle cylinder ①.
10. Install forward end of angle cylinder ① to plow using clevis pin ④ and cotter pin ③.



11. Install cable ties to hold harnesses away from sharp edges or moving parts.

TIP

See Plow Controller Kit instructions for details.

12. Turn ignition switch to **ACC** position.
13. Lower blade.
14. Turn ignition switch to **OFF** position and remove key.