

UPPER FRONT BUMPER KIT



P/N 2885084

BEFORE YOU BEGIN

Read these instructions and check to be sure all parts and tools are accounted for. Please retain these installation instructions for future reference and parts ordering information.

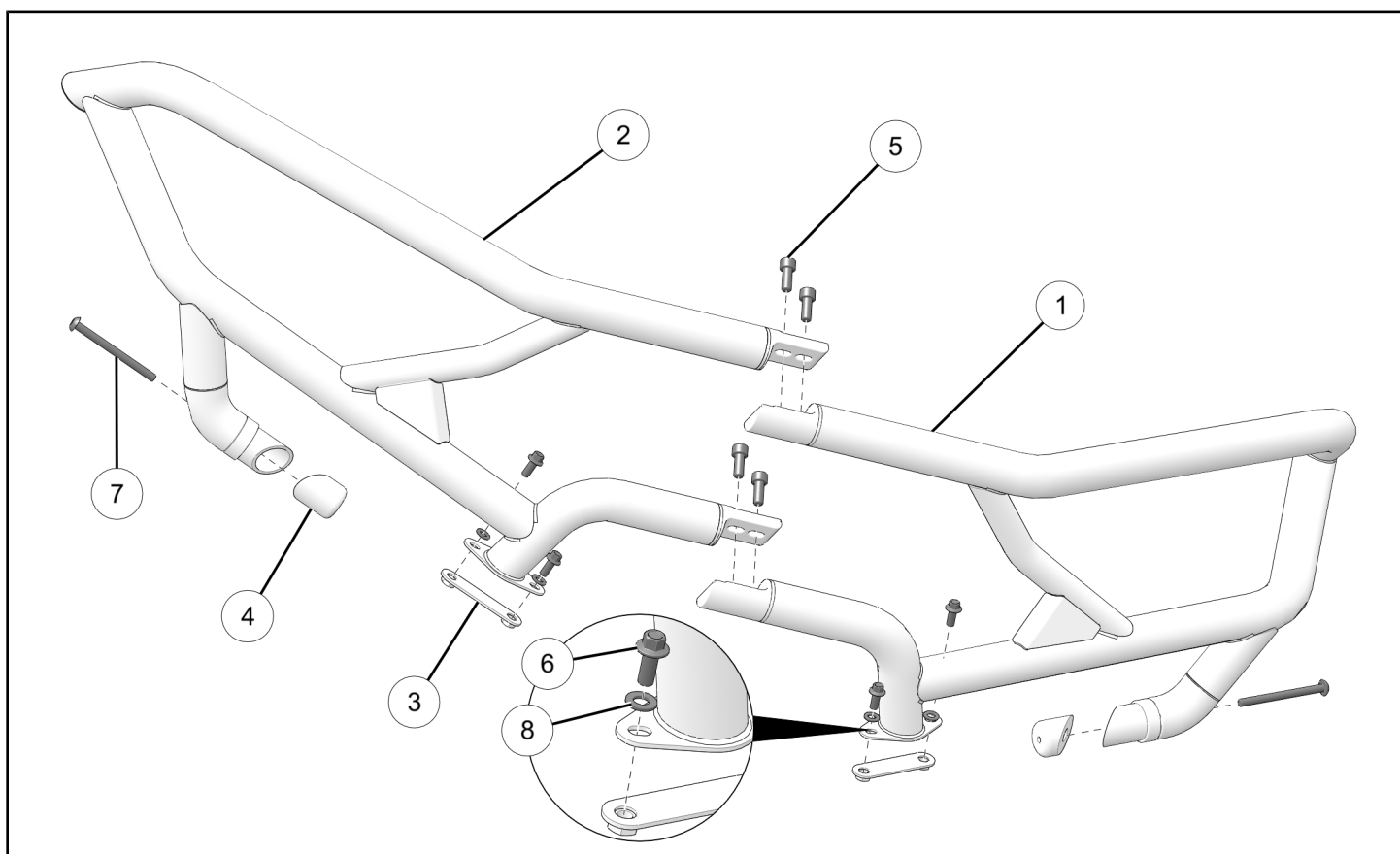
APPLICATION

Verify accessory fitment at www.polaris.com.

IMPORTANT

This Upper Bumper Kit cannot be used with the Hood Rack Kit (P/N 2885088).

KIT CONTENTS



| REF | QTY | PART DESCRIPTION | P/N AVAILABLE SEPARATELY |
|-----|-----|--------------------------------------|--------------------------|
| 1 | 1 | Weld-Front Bumper, Left-hand | 1026244 |
| 2 | 1 | Weld-Front Bumper, Right-hand | 1026245 |
| 3 | 2 | Weld-Backer Plate | 1026741 |
| 4 | 2 | Mount, Cast, Threaded | n/a |
| 5 | 4 | Screw-Socket Head, M10 x 1.5 x 25 mm | 7517358 |
| 6 | 4 | Screw-Hex Flange, M8 x 1.25 x 20 mm | 7517838 |

| REF | QTY | PART DESCRIPTION | P/N AVAILABLE SEPARATELY |
|-----|-----|--|--------------------------|
| 7 | 2 | Screw-Torx® Truss Head, M8 x 1.25 x 100 mm | 7519831 |
| 8 | 4 | Washer, 8.4 x 16.0 x 1.6 mm | 7556043 |

TOOLS REQUIRED

- Safety Goggles
- Screwdriver Set, Torx®
- Socket Set, Hex Bit, Metric
- Socket Set, Metric
- Socket Set, Torx® Bit
- Torque Wrench
- Wrench Set, Metric

IMPORTANT

Your Upper Front Bumper Kit is exclusively designed for your vehicle. Please read the installation instructions thoroughly before beginning. Installation is easier if the vehicle is clean and free of debris. For your safety, and to ensure a satisfactory installation, perform all installation steps correctly in the sequence shown.

INSTALLATION INSTRUCTIONS

VEHICLE PREPARATION

GENERAL

1. Park vehicle on a flat surface.
2. Shift vehicle into PARK.
3. Turn key to OFF position and remove key.
4. Remove front bumper plug from each end of front bumper. Front bumper plugs will not be reused.

ACCESSORY INSTALLATION

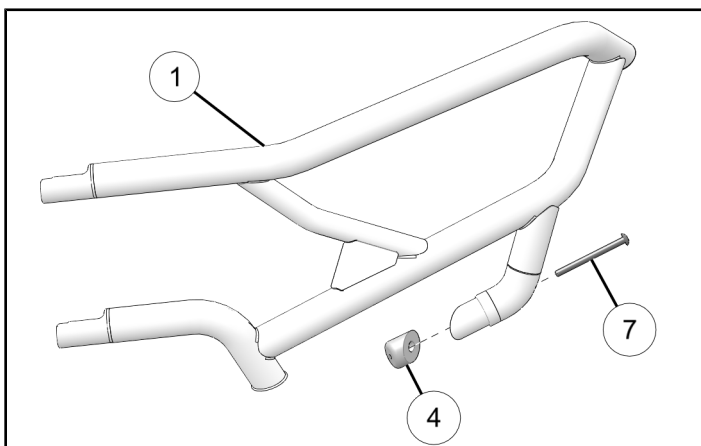
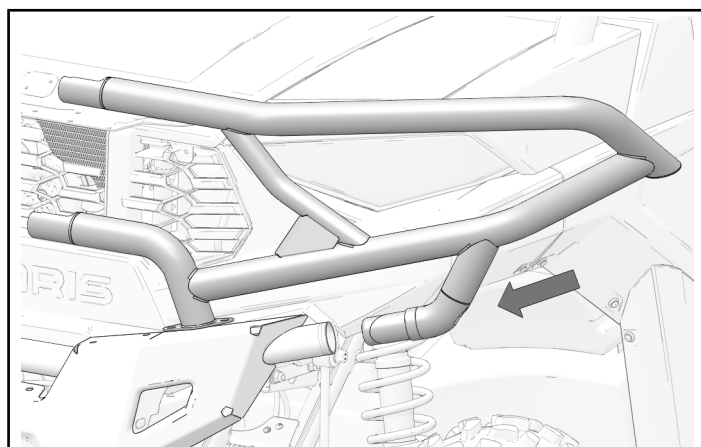
NOTICE

Left-hand side shown; right-hand side similar.

1. Loosely install threaded mount ④ to left-hand front bumper ① with screw ⑦.

Do not torque screws at this time.

2. Insert left-hand upper bumper assembly into existing lower bumper.

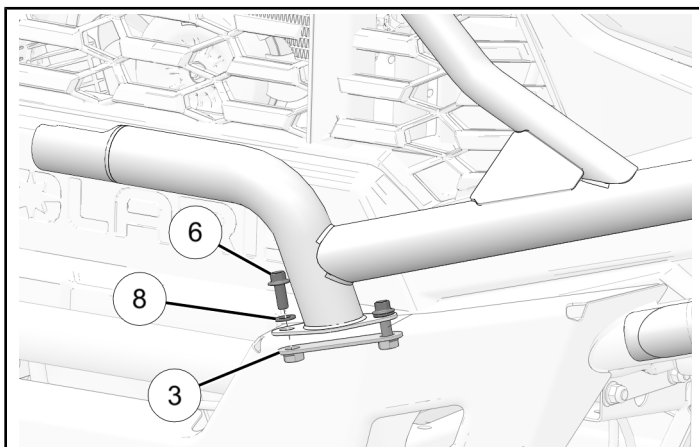


3. Loosely install left-hand upper bumper assembly to lower bumper with backing plate ③, two washers ⑧, and two screws ⑥.

Do not torque screws at this time.

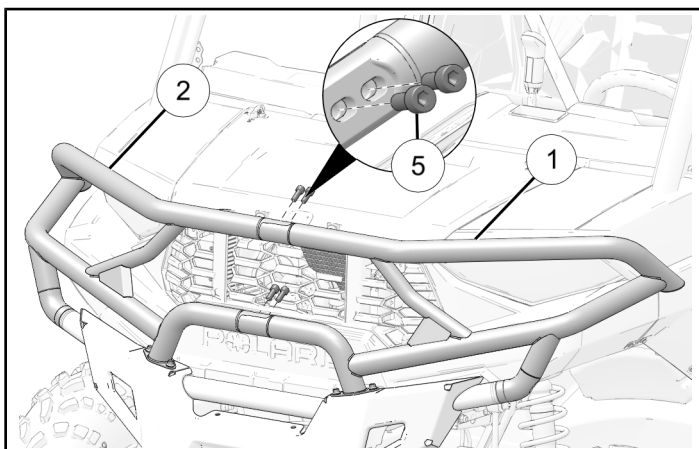
NOTICE

Lower bumper hidden for clarity.



4. Repeat steps 1-3 for right-hand side upper bumper.
5. Loosely install four screws ⑤ to attach the left-hand upper bumper ① to the right-hand upper bumper ②.

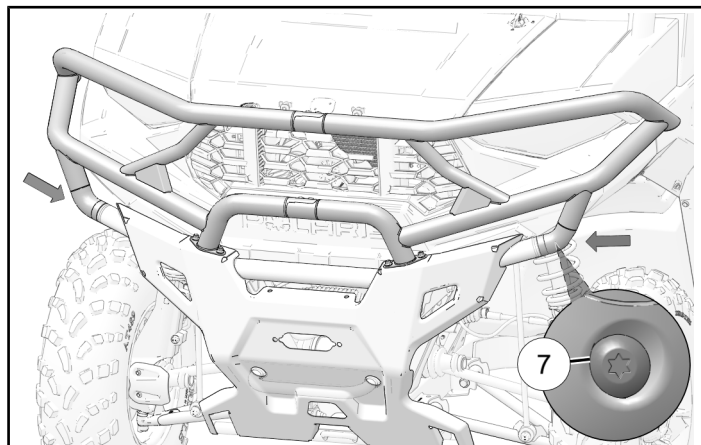
Do not torque screws at this time.



6. Torque two threaded mount screws ⑦ to specification.

TORQUE

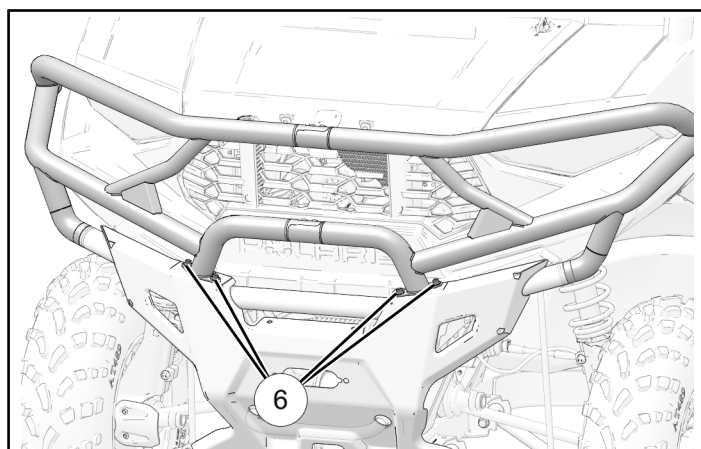
Threaded Mount Screws ⑦:
16 ft-lbs (22 N·m)



7. Torque four backing plate screws ⑥ to specification.

TORQUE

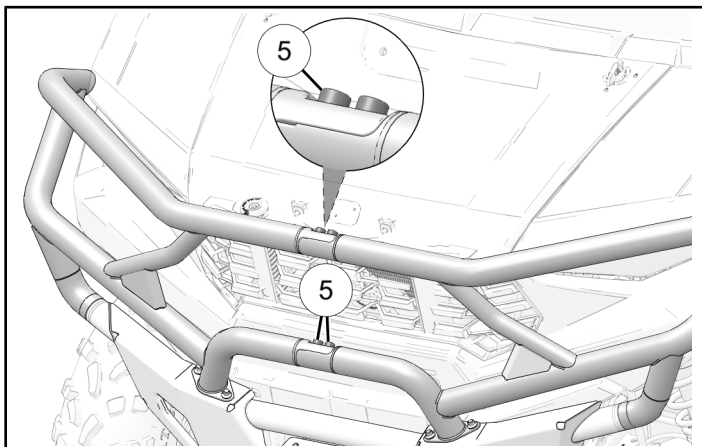
Backing Plate Screws ⑥:
16 ft-lbs (22 N·m)



8. Torque four upper bumper screws ⑤ to specification.

TORQUE

Upper Bumper Screws ⑤:
40 ft-lbs (54 N·m)



INSTRUCTION FEEDBACK FORM

A feedback form has been created for the installer to provide any comments, questions or concerns about the installation instructions. The form is viewable on mobile devices by scanning the QR code or by clicking [HERE](#) if viewing on a PC.

