

SPARE TIRE RACK KIT



P/N 2884326-XXX

BEFORE YOU BEGIN

Read these instructions and check to be sure all parts and tools are accounted for. Please retain these installation instructions for future reference and parts ordering information.

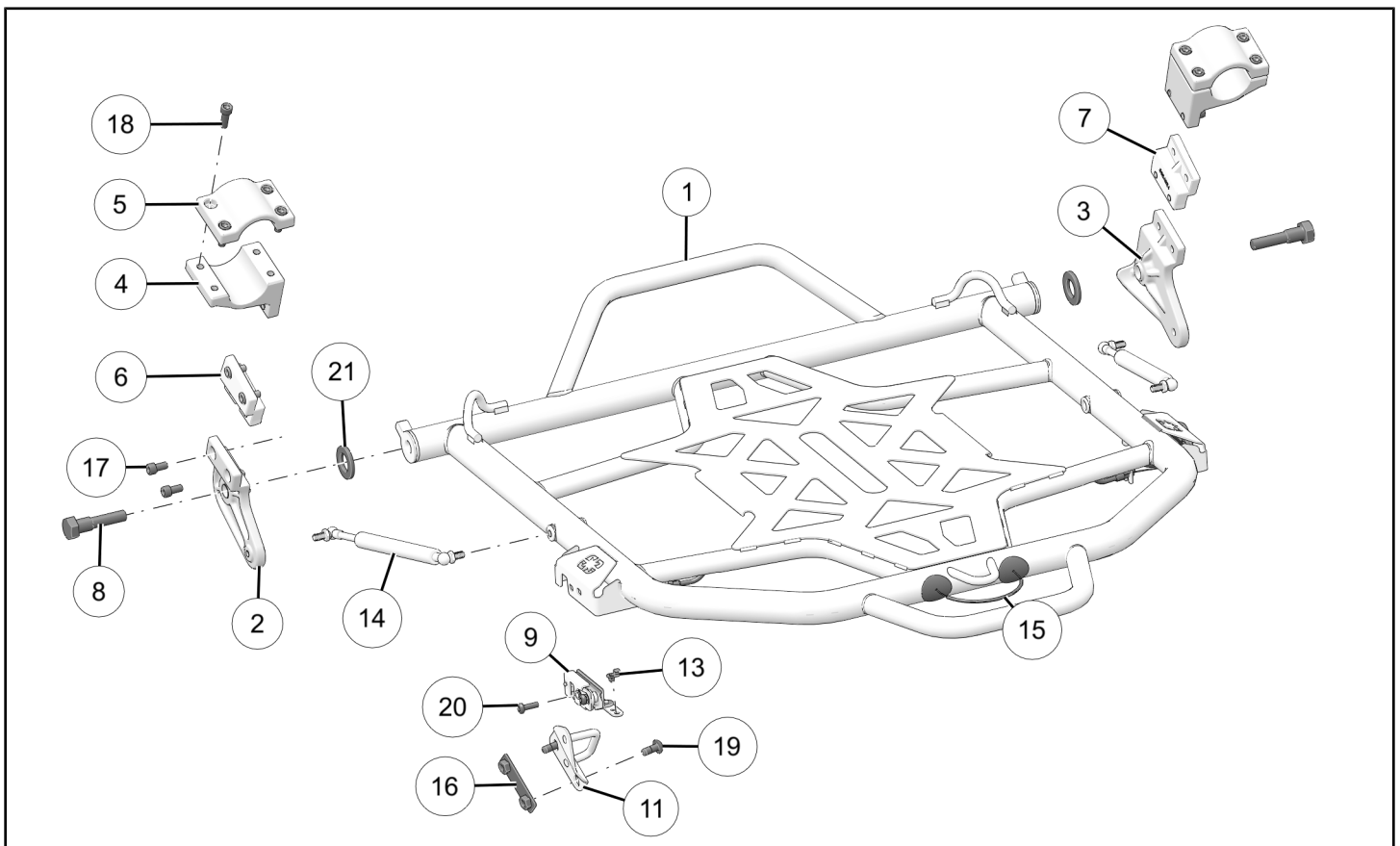
APPLICATION

Verify accessory fitment at www.polaris.com.

ACCESSORY WEIGHT

Accessories, passengers, and other factors may negatively affect ride performance. Refer to your vehicle's owner's manual for maximum weight capacity and suspension adjustment procedures.

KIT CONTENTS



NOTICE

XXX = Polaris® color code (For example: 458 = Black)

REF	QTY	PART DESCRIPTION	P/N AVAILABLE SEPARATELY	AVAILABLE SERVICE KIT
1	1	Assembly–Spare Tire Rack	n/a	n/a
2	1	Pivot–Bracket, Spare Tire Rack, Left-Hand	5634613	n/a
3	1	Pivot–Bracket, Spare Tire Rack, Right-Hand	5634614	n/a

REF	QTY	PART DESCRIPTION	P/N AVAILABLE SEPARATELY	AVAILABLE SERVICE KIT
4	2	Clamp–Pivot, Lower	5634622	n/a
5	2	Clamp–Pivot	5634615	n/a
6	1	Clamp–Spacer, Left-Hand	5634623	n/a
7	1	Clamp–Spacer, Right-Hand	5634624	n/a
8	2	Pin–Pivot, M16	7662453	n/a
9	1	Latch–Left-Hand	n/a	2209419
10	1	Latch–Right-Hand	n/a	2209419
11	1	Weld–Striker Bracket, Left–Hand	n/a	2209419
12	1	Weld–Striker Bracket, Right–Hand	n/a	2209419
13	2	Clip–Latch	5454637	n/a
14	2	Strut–Gas	7045596	n/a
15	1	Cable–Actuation	7082658	n/a
16	2	Weld–Plate, Nut	n/a	2208594
17	8	Screw–Socket Head, M8 x 1.25 mm x 16 mm	n/a	2208594
18	8	Screw–Socket Head, M8 x 1.25 mm x 25 mm	n/a	2208594
19	4	Screw–Torx® Pan Head, M8 x 1.25 mm x 20 mm	n/a	2208594
20	4	Screw–Torx® Pan Head, M6 x 1.0 mm x 20 mm	n/a	2208594
21	2	Bushing–Pivot	n/a	2208594
22	1	Spare Tire K-Rack	n/a	2884326
23	1	Assembly–Strap, Tire (not shown)	2689506	n/a

TOOLS REQUIRED

- Safety Glasses
- Hammer, Soft Face
- Hex Key Set, Metric
- Level, Small
- Level, Large
- Screwdriver Set, Torx®
- Socket Set, Hex Bit, Metric
- Socket Set, Metric
- Socket Set, Torx® Bit
- Tape Measure
- Torque Wrench
- Wrench Set, Metric

IMPORTANT

Your Spare Tire Rack Kit is exclusively designed for your vehicle. Please read the installation instructions thoroughly before beginning. Installation is easier if the vehicle is clean and free of debris. For your safety, and to ensure a satisfactory installation, perform all installation steps correctly in the sequence shown.

INSTALLATION INSTRUCTIONS

NOTICE

Due to weight of kit components, Polaris® recommends two people install this kit.

WARNING

Use caution when securing tire and latching rear tire rack. Failure to properly secure tire and latch tire rack can result in tire rack components and/or tire to separate from vehicle and cause an accident, resulting in serious personal injury or death.

NOTICE

Two-passenger vehicle shown; multi-passenger vehicle similar, except where noted.

VEHICLE PREPARATION

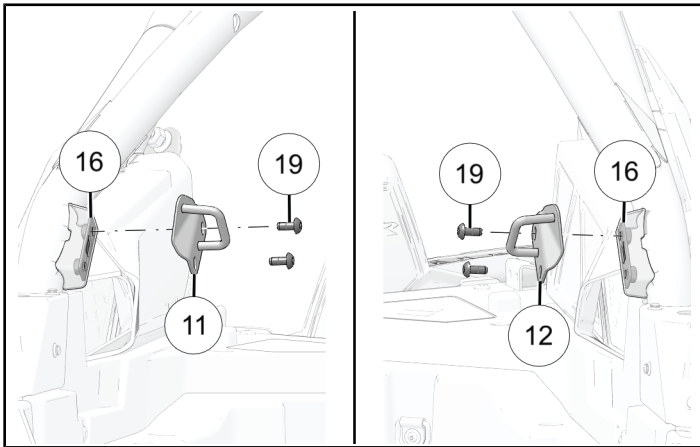
GENERAL

1. Shift vehicle transmission into PARK.
2. Turn key to OFF position and remove from vehicle.

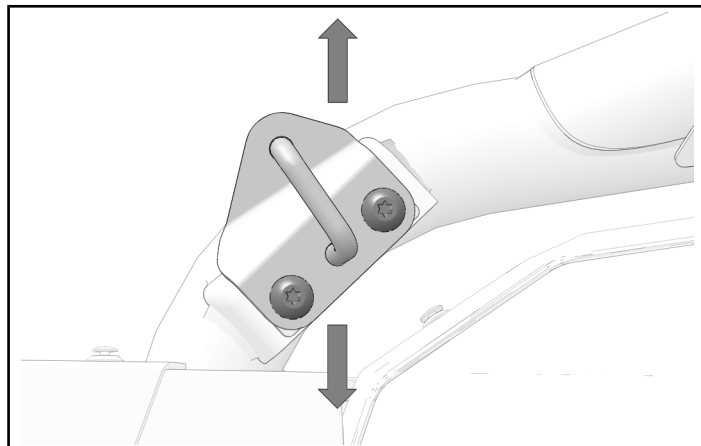
ACCESSORY INSTALLATION

STRIKER INSTALLATION

1. Position plate nut ⑯ behind mounting bracket. Align striker ⑪ and ⑫ with mounting bracket and install with two fasteners ⑲ per striker.



2. Tighten fasteners enough to allow striker to move up and down.



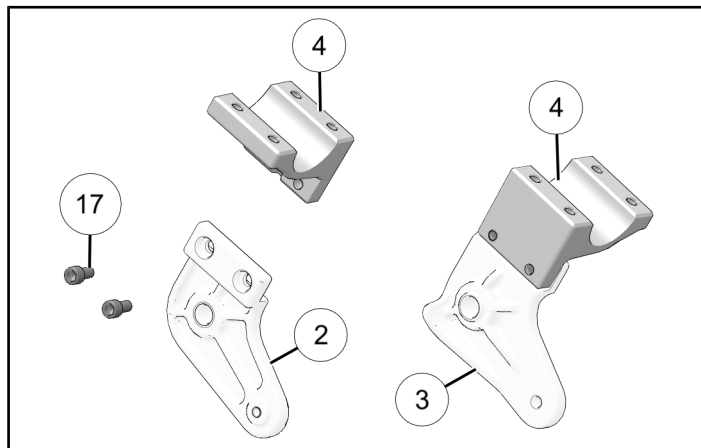
PIVOT BRACKET ASSEMBLY

TWO PASSENGER

1. Install lower clamps ④ onto left-hand pivot bracket ② and right-hand pivot bracket ③ with two fasteners ⑰ per clamp.

TORQUE

Pivot Bracket Fasteners ⑰:
18 ft-lbs (25 N·m)



MULTI-PASSENGER

1. Install left-hand clamp spacer ⑥ onto left-hand pivot bracket ② with two fasteners ⑰. Install right-hand clamp spacer ⑦ onto right-hand pivot bracket ③ with two fasteners ⑰.

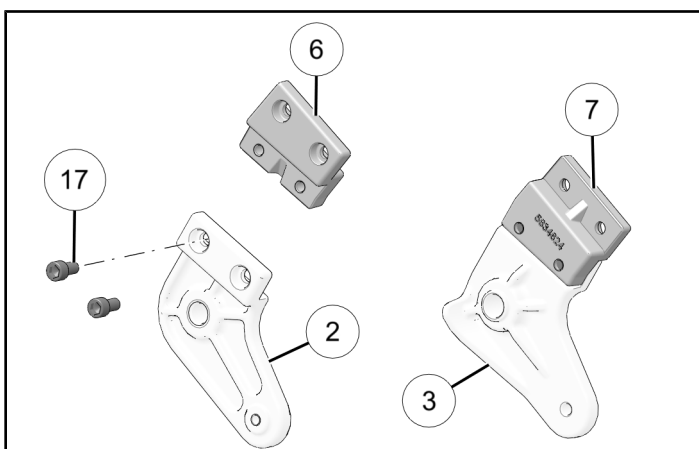
TIP

Spacers are stamped with P/N

Left Spacer	Right Spacer
5634623	5634624

TORQUE

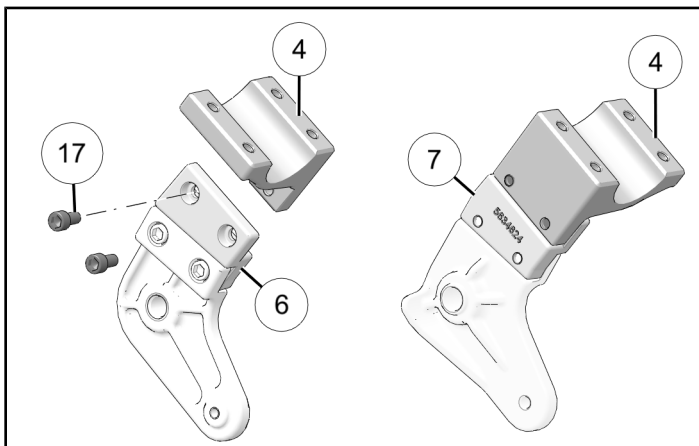
Pivot Bracket Fasteners ⑰:
18 ft-lbs (25 N·m)



2. Install lower clamps ④ onto left-hand clamp spacer ⑥ and right-hand clamp spacer ⑦ with two fasteners ⑰ per clamp.

TORQUE

Pivot Bracket Fasteners ⑰:
18 ft-lbs (25 N·m)



PIVOT BRACKET INSTALLATION

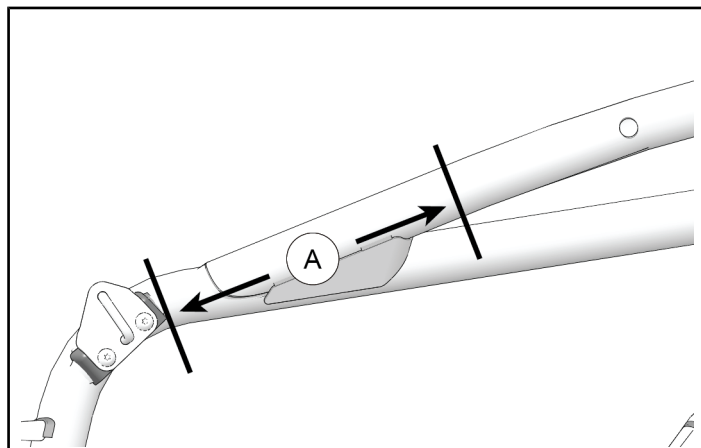
NOTICE

Left pivot bracket shown; right pivot bracket similar.

1. Measure **11 1/2 in (290 mm)** from most forward point of bracket and mark tube with marker, or equivalent, for clamp placement.

MEASUREMENT

Measurement ①:
11 1/2 in (290 mm)

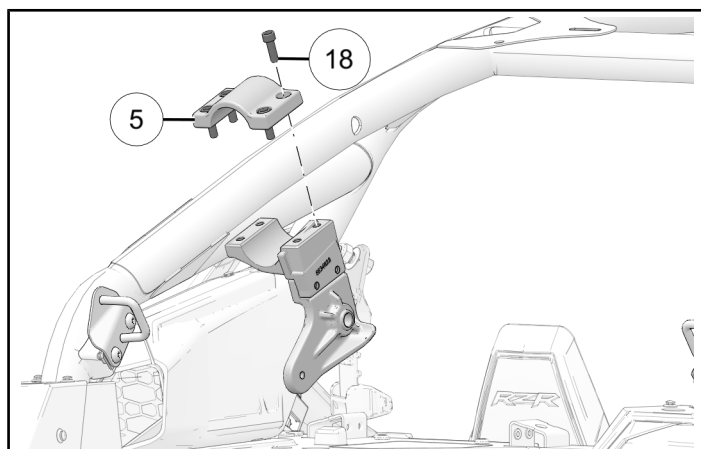


2. Install pivot clamp assembly with top clamp ⑤ and four fasteners ⑱.

Do not torque fasteners at this time.

TIP

Pivot bracket assembly should be loose enough that it can be repositioned with soft face hammer, if needed.



3. Verify pivot bracket fasteners are at the same torque specification. Re-torque if needed.

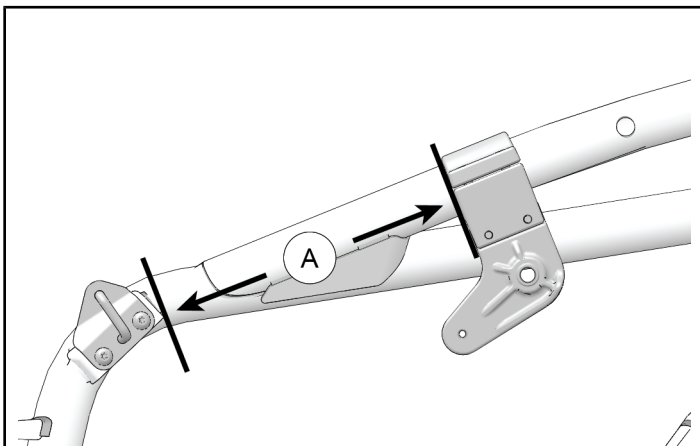
TORQUE

Pivot Bracket Fasteners ⑰:
18 ft-lbs (25 N-m)

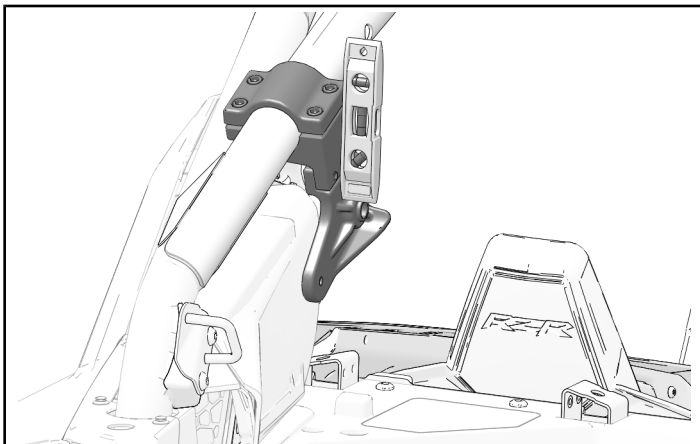
4. Install pivot clamp assembly according to measurement below.

MEASUREMENT

Measurement ①:
11 1/2 in (290 mm)



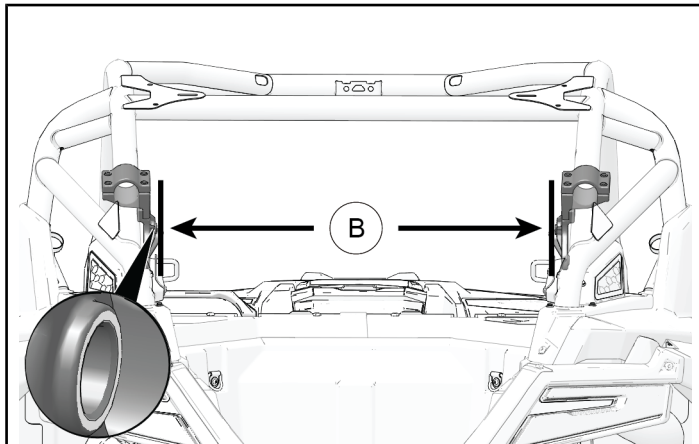
5. Make sure pivot brackets are vertically plumb.



6. Make sure pivot clamp assemblies are correctly spaced apart, according to measurement below. Measure from pivot pin hole to pivot pin hole.

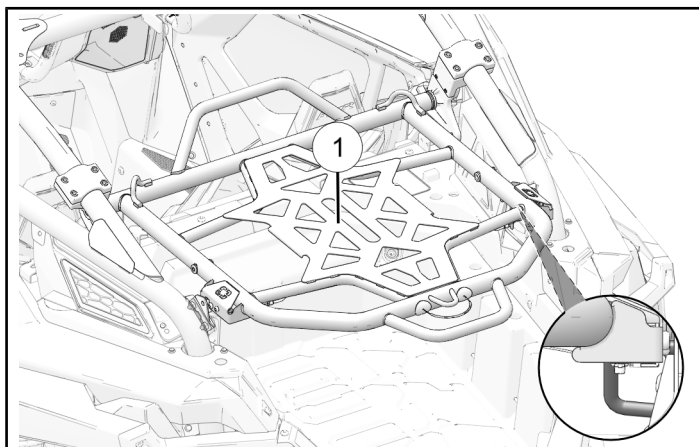
MEASUREMENT

Measurement ②:
32 1/2 in (823 mm)

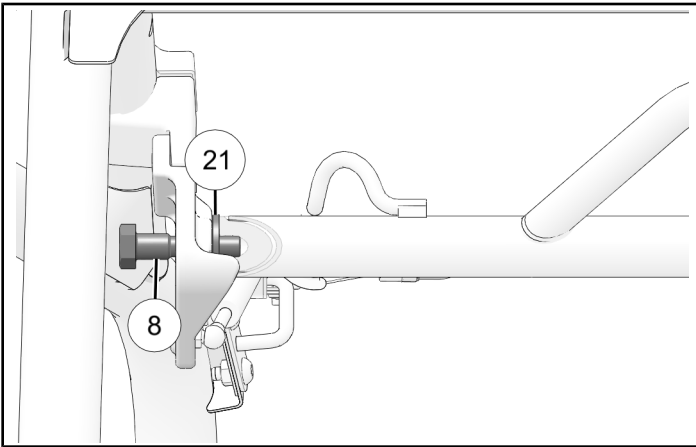


TIRE RACK INSTALLATION

1. With an assistant, lift tire rack into bed of vehicle. Rest latches onto striker brackets for proper alignment and tap pivot brackets into place, against tire rack.



2. Install pivot pins ⑧ through bracket, spacer ⑳, and into tire rack.



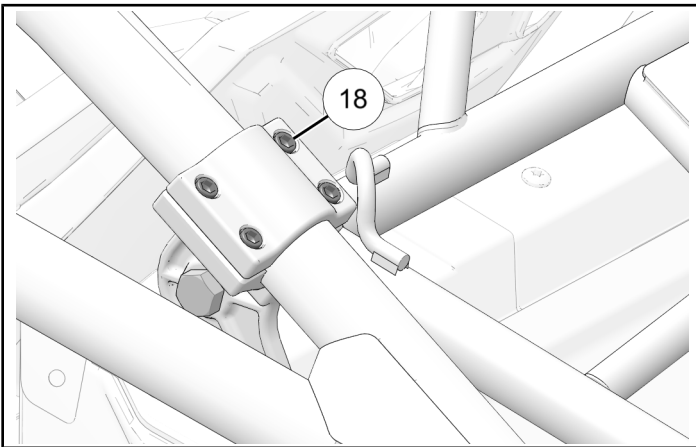
3. Tighten pivot bracket clamp fasteners ⑱ to specification.

TIP

Tap pivot brackets gain with soft face hammer if a gap remains.

TORQUE

Pivot Bracket Fasteners ⑱:
18 ft-lbs (25 N·m)

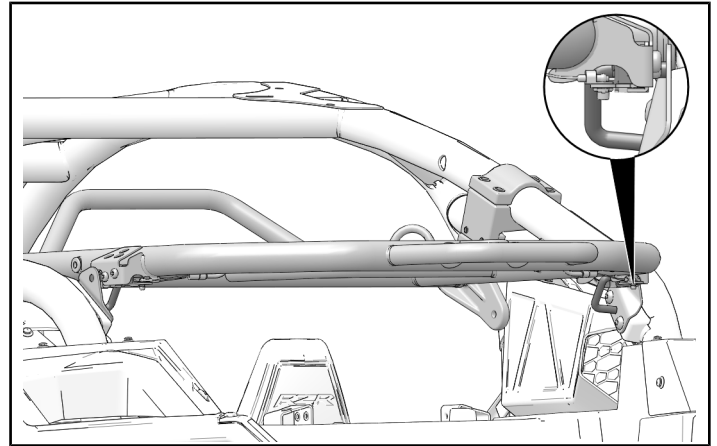


4. Torque pivot pins ⑧ to specification.

TORQUE

Pivot Pins ⑧:
60 ft-lbs (81 N·m)

5. When tire rack is lowered, latches should hit strikers simultaneously. Adjust accordingly in following steps.



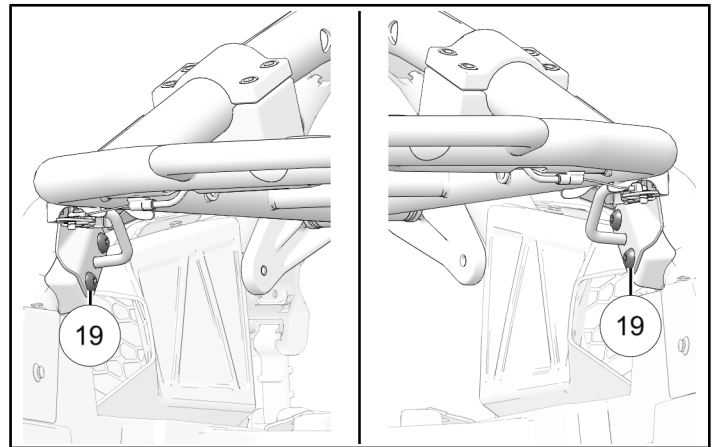
6. Adjust striker brackets to meet the following requirements:

- Striker brackets are at equal height with one another
- Latch must fully engage striker rod when tire rack is lowered

7. Tighten striker bracket fasteners ⑲ to specification.

TORQUE

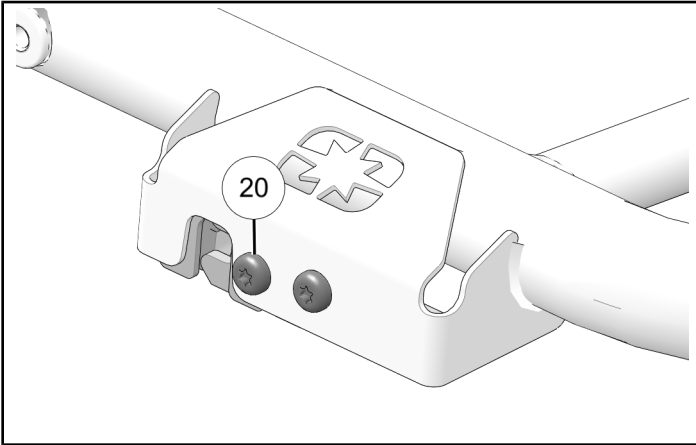
Striker Bracket Fasteners ⑲:
9 ft-lbs (12 N·m)



8. Torque latch fasteners ⑳ to specification.

TORQUE

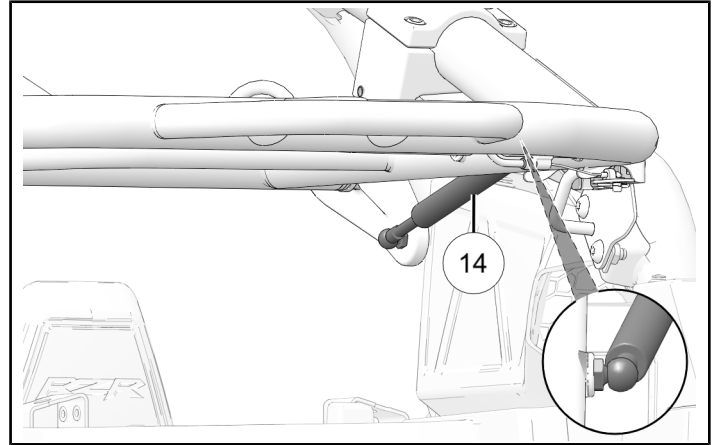
Latch Fasteners ⑳:
9 ft-lbs (12 N·m)



9. Install each strut ⑭ onto tire rack and pivot bracket.

TIP

Install with push rod facing downward.



OPERATION

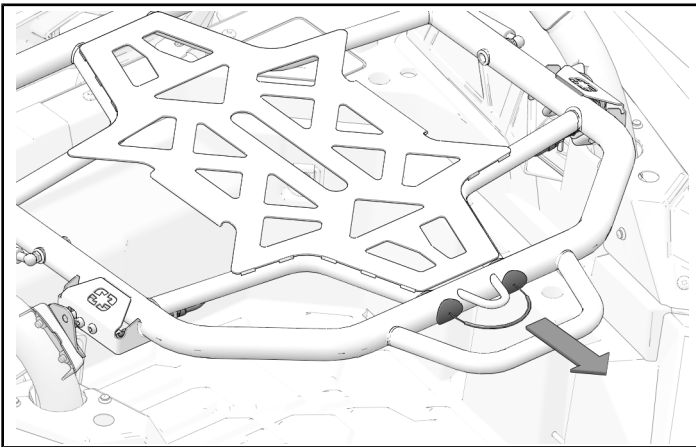
LATCH OPERATION

UNDER LOAD

Pull actuator cable rearward to simultaneously release latches from strikers.

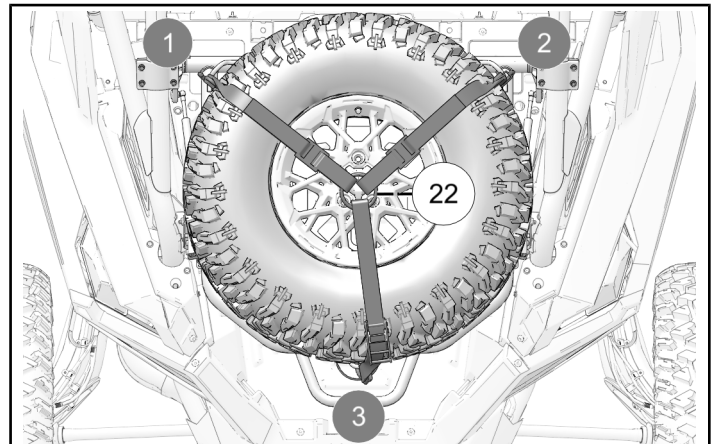
NO LOAD

Apply downward pressure to spare tire rack and pull actuator cable rearward to simultaneously release latches from strikers.



SECURING SPARE TIRE

Secure spare tire onto rack using 3-point tire strap ㉒.



FEEDBACK FORM

A feedback form has been created for the installer to provide any comments, questions or concerns about the installation instructions. The form is viewable on mobile devices by scanning the QR code or by clicking [HERE](#) if viewing on a PC.

