

ROCK SLIDER KIT



P/N 2884874; 2884875

BEFORE YOU BEGIN

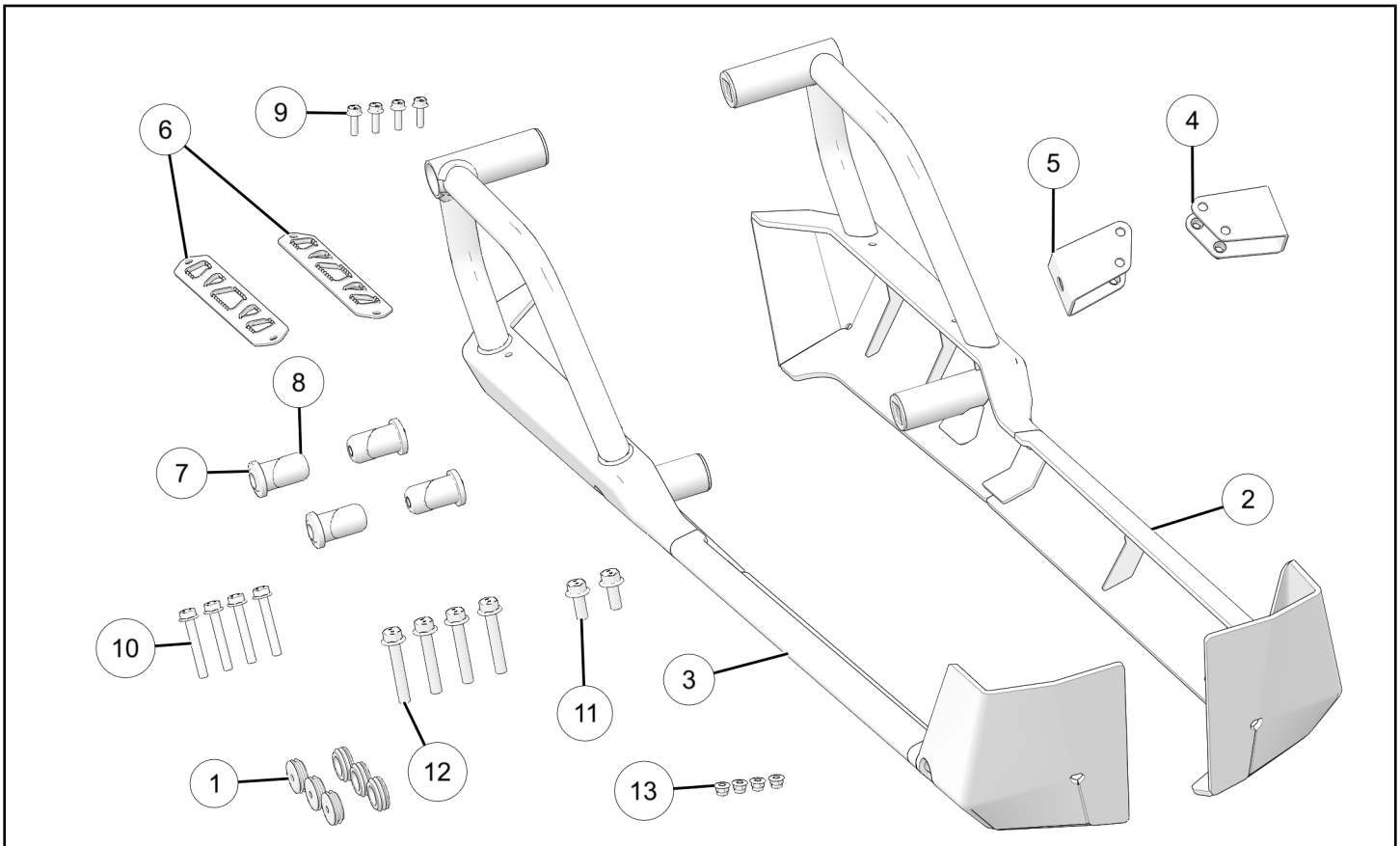
Read these instructions and check to be sure all parts and tools are accounted for. Please retain these installation instructions for future reference and parts ordering information.

APPLICATION

Verify accessory fitment at www.polaris.com.

KIT CONTENTS

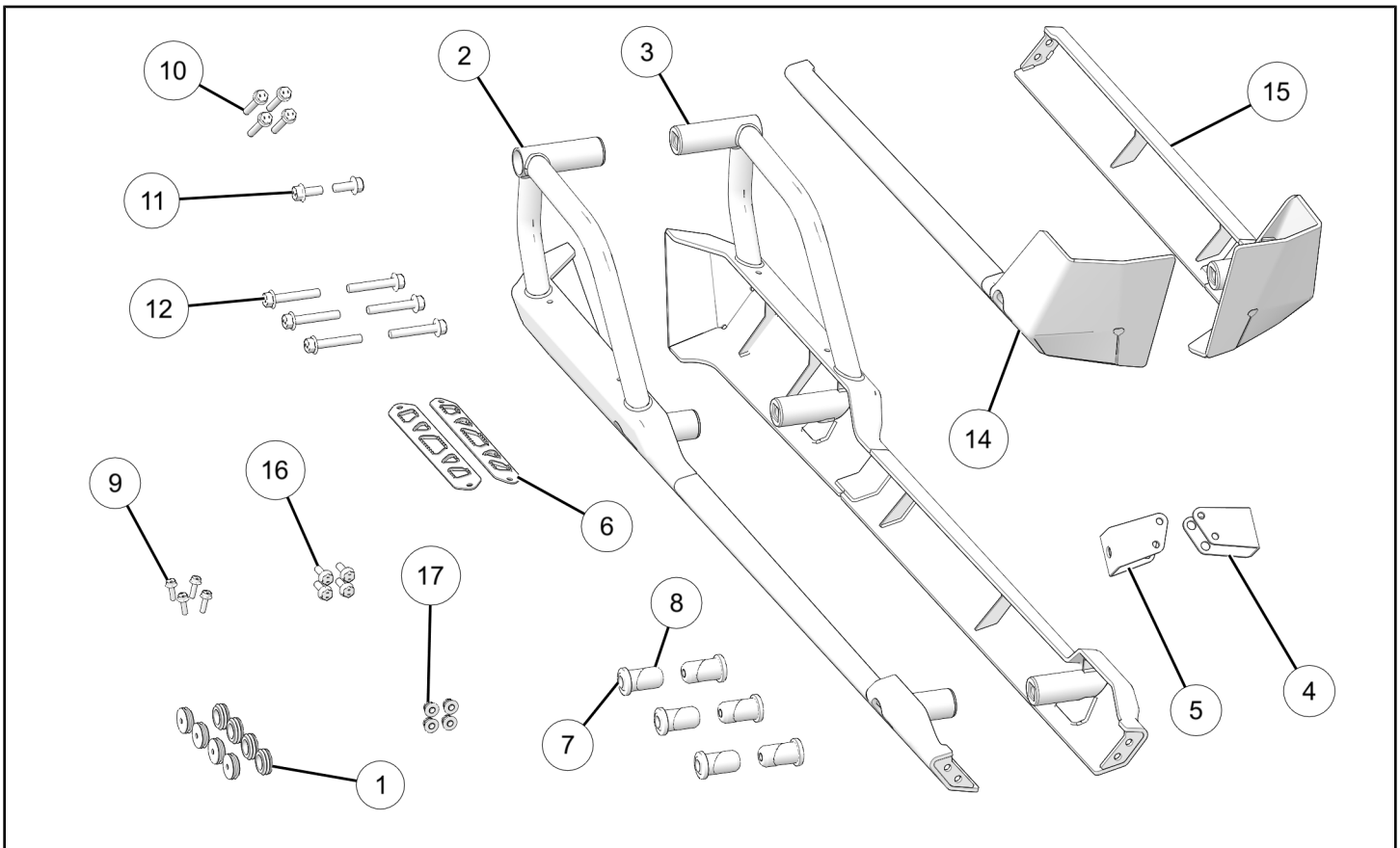
THREE PASSENGER ROCK SLIDER KIT P/N 2884874



REF	QTY	PART DESCRIPTION	P/N AVAILABLE SEPARATELY	AVAILABLE SERVICE KIT
1	6	End Cap	n/a	n/a
2	1	Slider, Left	1026007	n/a
3	1	Slider, Right	1026008	n/a
4	1	Mount, Bracket, Left	n/a	n/a
5	1	Mount, Bracket, Right	n/a	n/a
6	2	Step, Sliders	n/a	n/a
7	4	Anchor, Wedge Loc, Unthreaded	n/a	2209701

REF	QTY	PART DESCRIPTION	P/N AVAILABLE SEPARATELY	AVAILABLE SERVICE KIT
8	4	Anchor, Wedge Loc, Threaded	n/a	2209701
9	4	Screw, Hex Flanged, M6 x 1.0 x 20 mm	7521331	n/a
10	4	Screw, Hex Flanged, M8 x 1.25 x 55 mm	7521332	2209701
11	2	Screw, Hex Flanged, M10 x 1.5 x 25 mm	7521333-25	2209701
12	4	Screw, Hex Flanged, M10 x 1.5 x 60 mm	7521333-60	2209701
13	4	Nut, Hex Flanged, M6 x 1.0 mm	7548027	n/a

SIX PASSENGER ROCK SLIDER KIT P/N 2884875



REF	QTY	PART DESCRIPTION	P/N AVAILABLE SEPARATELY	AVAILABLE SERVICE KIT
1	8	End Cap	n/a	n/a
2	1	Slider, Rear, Left	1026007	n/a
3	1	Slider, Rear, Right	1026008	n/a
4	1	Mount, Bracket, Left	n/a	n/a
5	1	Mount, Bracket, Right	n/a	n/a
6	2	Step, Sliders	n/a	n/a
7	6	Anchor, Wedge Loc, Unthreaded	n/a	2209702
8	6	Anchor, Wedge Loc, Threaded	n/a	2209702

REF	QTY	PART DESCRIPTION	P/N AVAILABLE SEPARATELY	AVAILABLE SERVICE KIT
9	4	Screw, Hex Flanged, M6 x 1.0 x 20 mm	7521331	n/a
10	4	Screw, Hex Flanged, M8 x 1.25 x 55 mm	7521332–55	2209702
11	2	Screw, Hex Flanged, M10 x 1.5 x 25 mm	7521333–25	2209702
12	6	Screw, Hex Flanged, M10 x 1.5 x 60 mm	7521333–60	2209702
13	4	Nut, Hex Flanged, M6 x 1.0 mm	7548027	n/a
14	1	Slider, Front, Left	n/a	n/a
15	1	Slider, Front, Right	n/a	n/a
16	4	Screw, Hex Flanged, M8 x 1.25 x 25 mm	7521332–25	
17	4	Nut, Hex Flanged, M8 x 1.25 mm	7548028	

TOOLS REQUIRED

- Safety Glasses
- Deburring Tool
- Drill
- Drill Bit:
 - 3/16 in (5 mm)
- Hole Saw:
 - 1–3/4 in (44 mm)
- Socket Set, Metric
- Torque Wrench

IMPORTANT

Your Rock Slider Kit is exclusively designed for your vehicle. Please read the installation instructions thoroughly before beginning. Installation is easier if the vehicle is clean and free of debris. For your safety, and to ensure a satisfactory installation, perform all installation steps correctly in the sequence shown.

INSTALLATION INSTRUCTIONS

VEHICLE PREPARATION

GENERAL

1. Park vehicle on a flat surface.
2. Shift vehicle into PARK.
3. Turn key to OFF position and remove key.

ACCESSORY INSTALLATION

1. Find and mark the centers of drill hole locations. Drill locations will have dimples marking where holes will be cut.

NOTICE

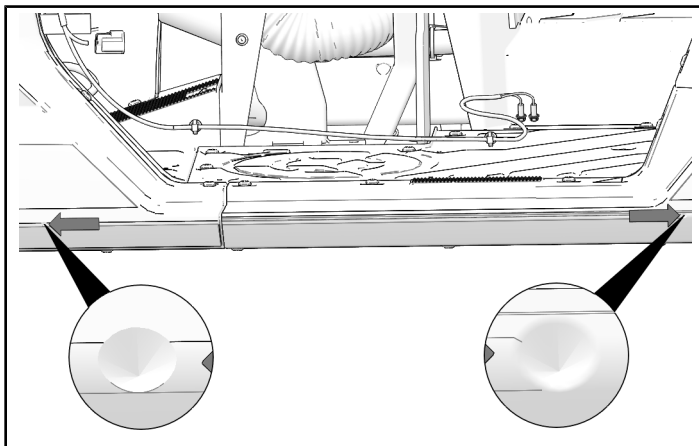
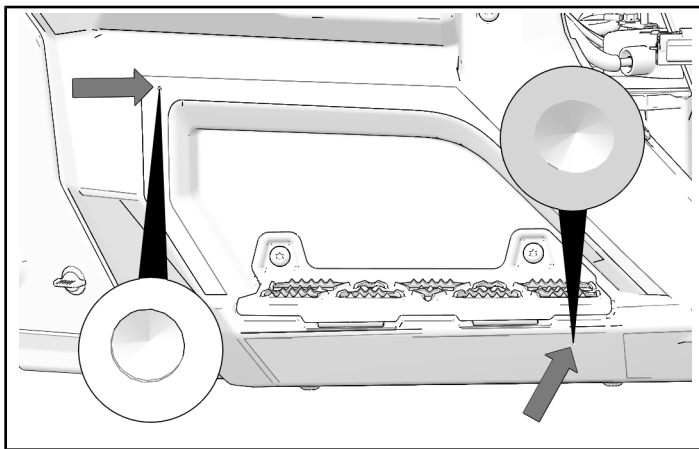
Right side shown; left side similar.

NOTICE

Three passenger requires three holes drilled, six passenger requires four holes drilled.

NOTICE

Six passenger model shown, three passenger similar.



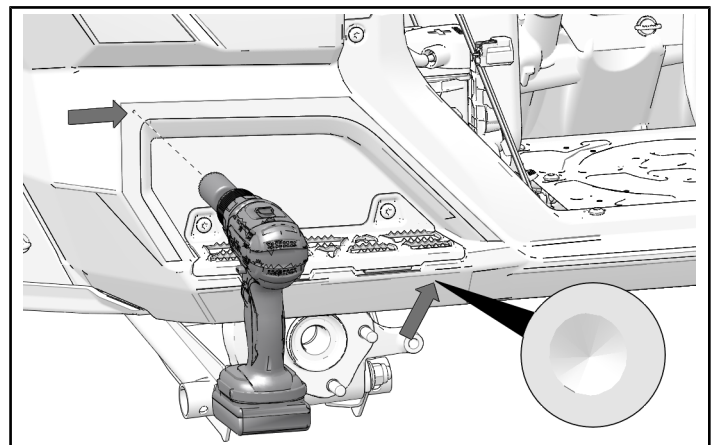
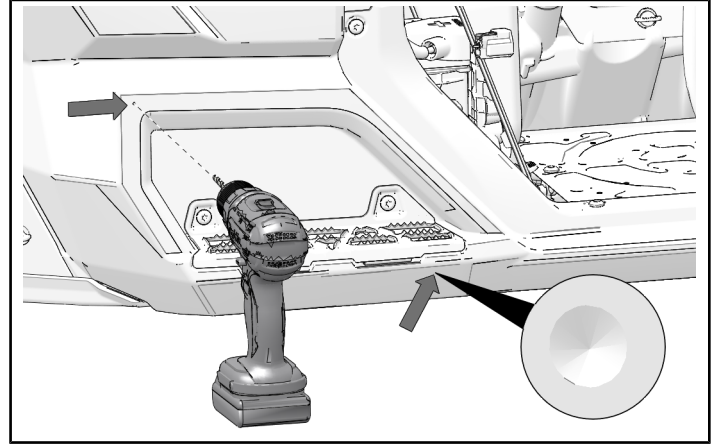
2. Drill a pilot hole at the center of each dimple.

NOTICE

Right side shown; left side similar.

MEASUREMENT

Drill Bit Size: 3/16 in (5 mm)



3. Cut each hole with hole saw. Repeat step for other side.

NOTICE

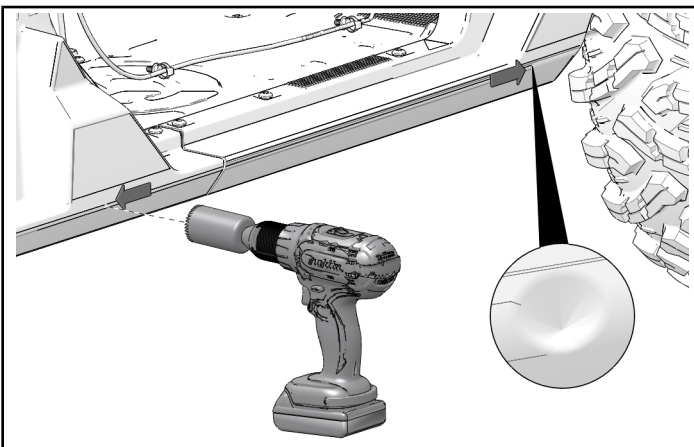
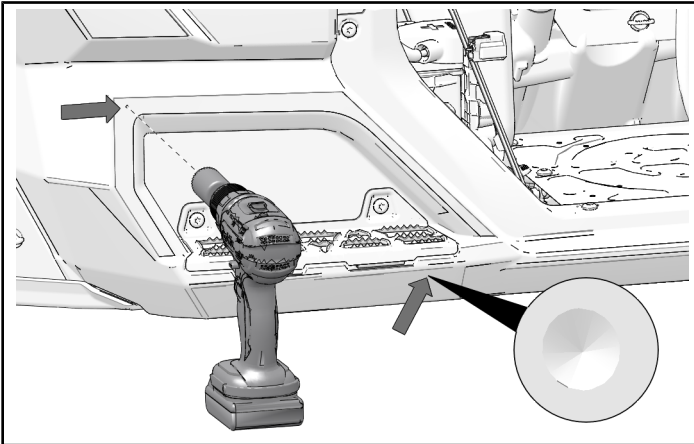
Right side shown; left side similar.

NOTICE

Some drill points are on angled surface, make sure to hold drill level when cutting.

MEASUREMENT

Hole Saw Size: 1 3/4 in (44 mm)

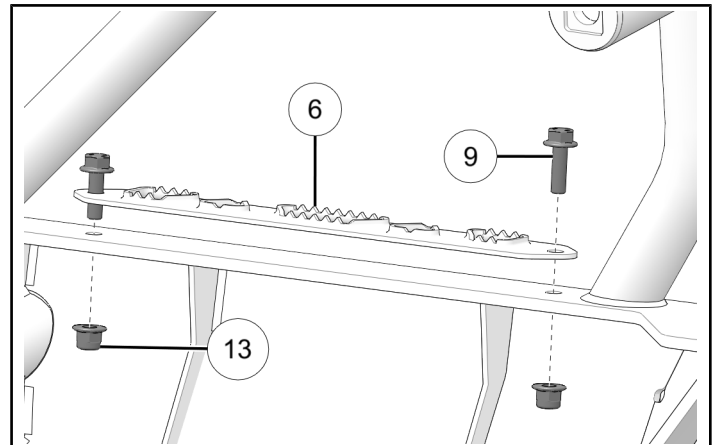


4. Use deburr tool to smooth all hole edges.

5. Loosely install foot steps ⑥ to rock sliders with screws ⑨ and nuts ⑬. Install with teeth facing upward. Repeat installation for other side.

NOTICE

Right side shown; left side similar.



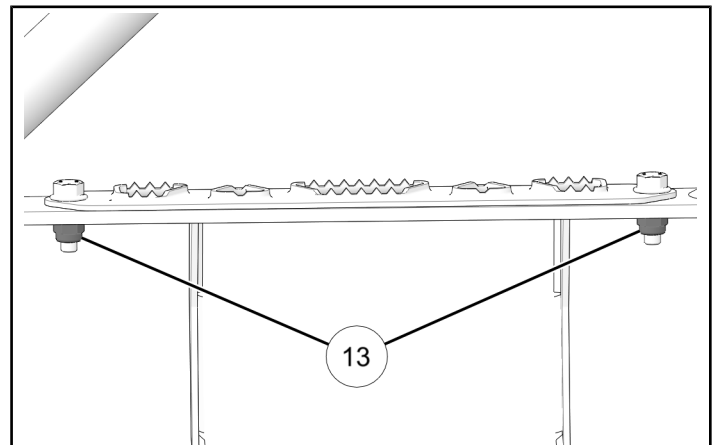
6. Torque foot grip nuts ⑬ to specification. Repeat step for other side.

NOTICE

Right side shown; left side similar.

TORQUE

Foot Grip Nuts ⑬:
106 in-lbs (12 N·m)

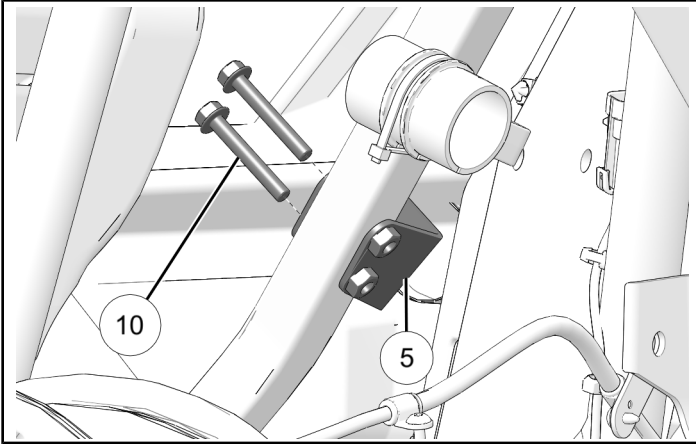


7. Install bracket ⑤ to holes on vehicle frame located at rear of the vehicle just in front of the rear tire using screws ⑩.

NOTICE

Right side shown; left side similar.

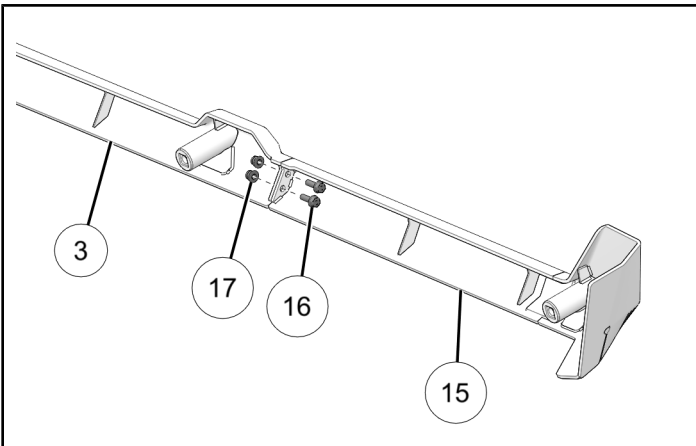
DO NOT torque fasteners at this time.



8. Install rear slider ③ to front slider ⑮ using two screws ⑮ and two nuts ⑰.

NOTICE

Right side shown; left side similar.



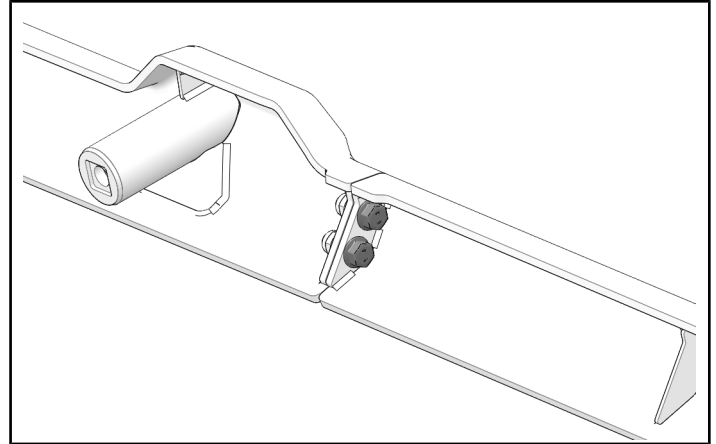
9. Torque nuts to specification.

NOTICE

Right side shown; left side similar.

TORQUE

Nuts:
16 ft-lbs (22 N·m)



10. Align anchor wedges to the backside of the rock slider and loosely attach screw ⑫ until anchor wedge contacts with rock slider. Make sure square part of anchor wedge is aligned with square recession in rock slider.

NOTICE

P/N 2884875 shown, 2884874 similar.

NOTICE

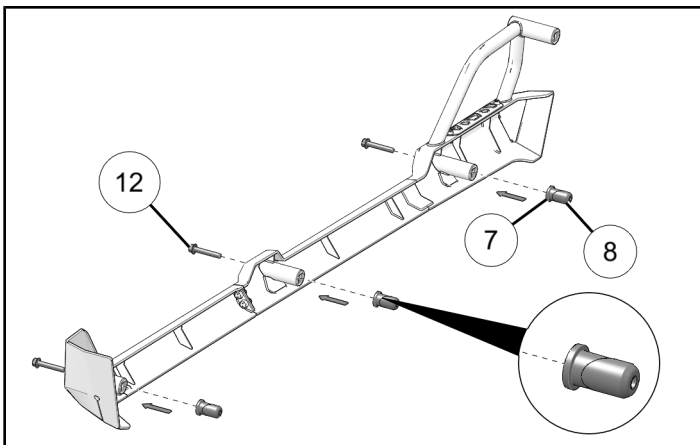
Right side shown; left side similar.

NOTICE

Do not over tighten or anchor wedge will separate.

NOTICE

Unthreaded and threaded anchor wedges are shipped glued together. If the glued joint is disassembled, hold the two pieces together by wrapping the joint with a thin layer of tape.



11. Install assembled rock slider ③ into the pre-drilled anchor pockets in the vehicle frame. Repeat installation for other side.

NOTICE

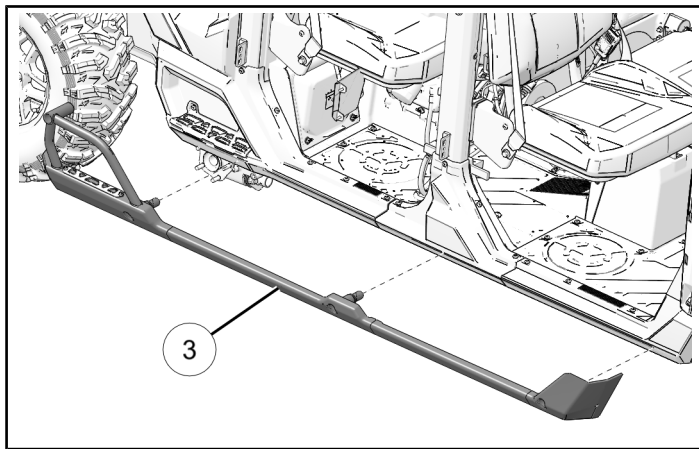
Right side shown; left side similar.

NOTICE

Multi-passenger model shown, three passenger model similar.

NOTICE

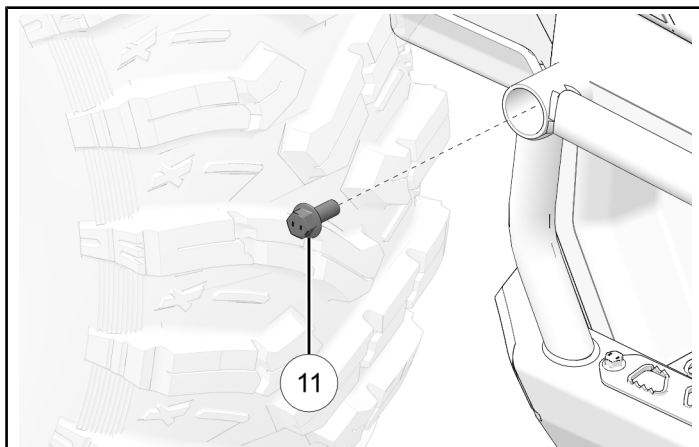
Two people may be needed to install rock slider onto the vehicle.



12. Loosely install upper bracket screw ⑪ through upper hole on rock slider assembly through vehicle and into previously installed bracket. Repeat installation for other side.

NOTICE

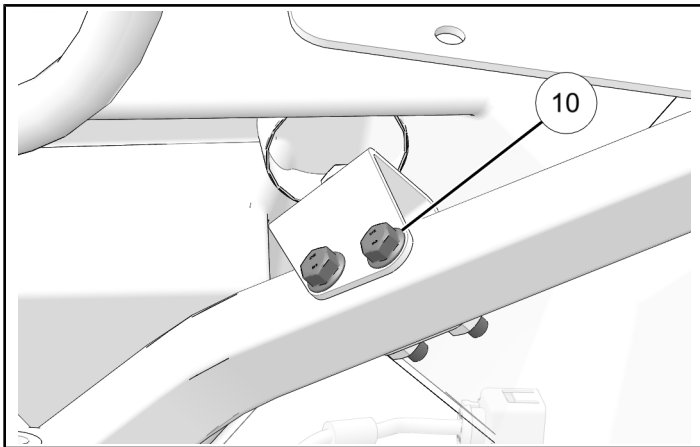
Right side shown; left side similar.



13. Torque bracket screws to specification.

TORQUE

Bracket Screws ⑩:
24 ft-lbs (32 N·m)



14. Torque all lower rock slider assembly hardware.

NOTICE

Right side shown; left side similar.

NOTICE

Keep rock slider held tight against vehicle while torquing bolts.

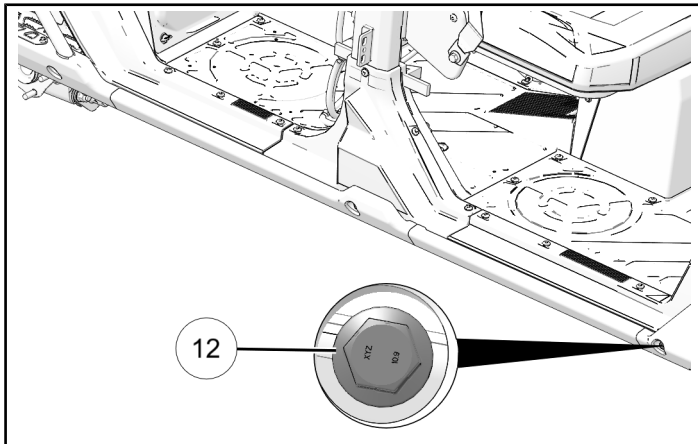
NOTICE

When torquing wedge anchors, there will be a loud noise as the glue binding them together breaks. Continue to torque until specification.

TORQUE

Wedge Anchors ⑫:

- Torque to initial specification: **74 ft-lbs (100 N·m)**
- Loosen each wedge anchor.
- Torque to final specification: **50 ft-lbs (68 N·m)**



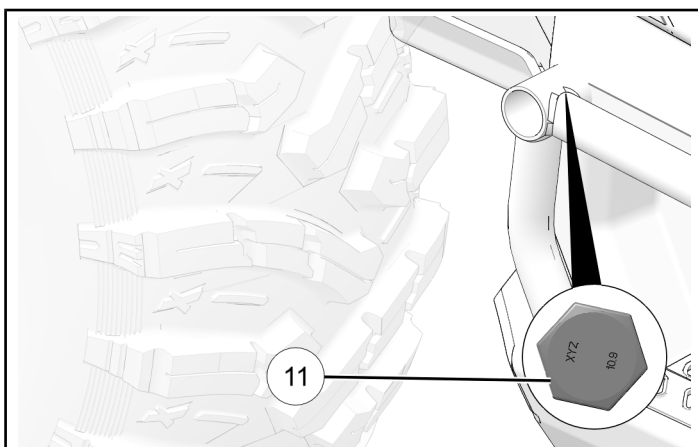
15. Torque all upper bracket hardware to specification.

NOTICE

Right side shown; left side similar.

TORQUE

Upper Bracket Screw ⑪:
44 ft-lbs (60 N·m)



16. Install end caps ① into each hole on rock slider assembly ③.

NOTICE

Right side shown; left side similar.

