

ALUMINUM ROOF KIT



P/N 2884761-XXX

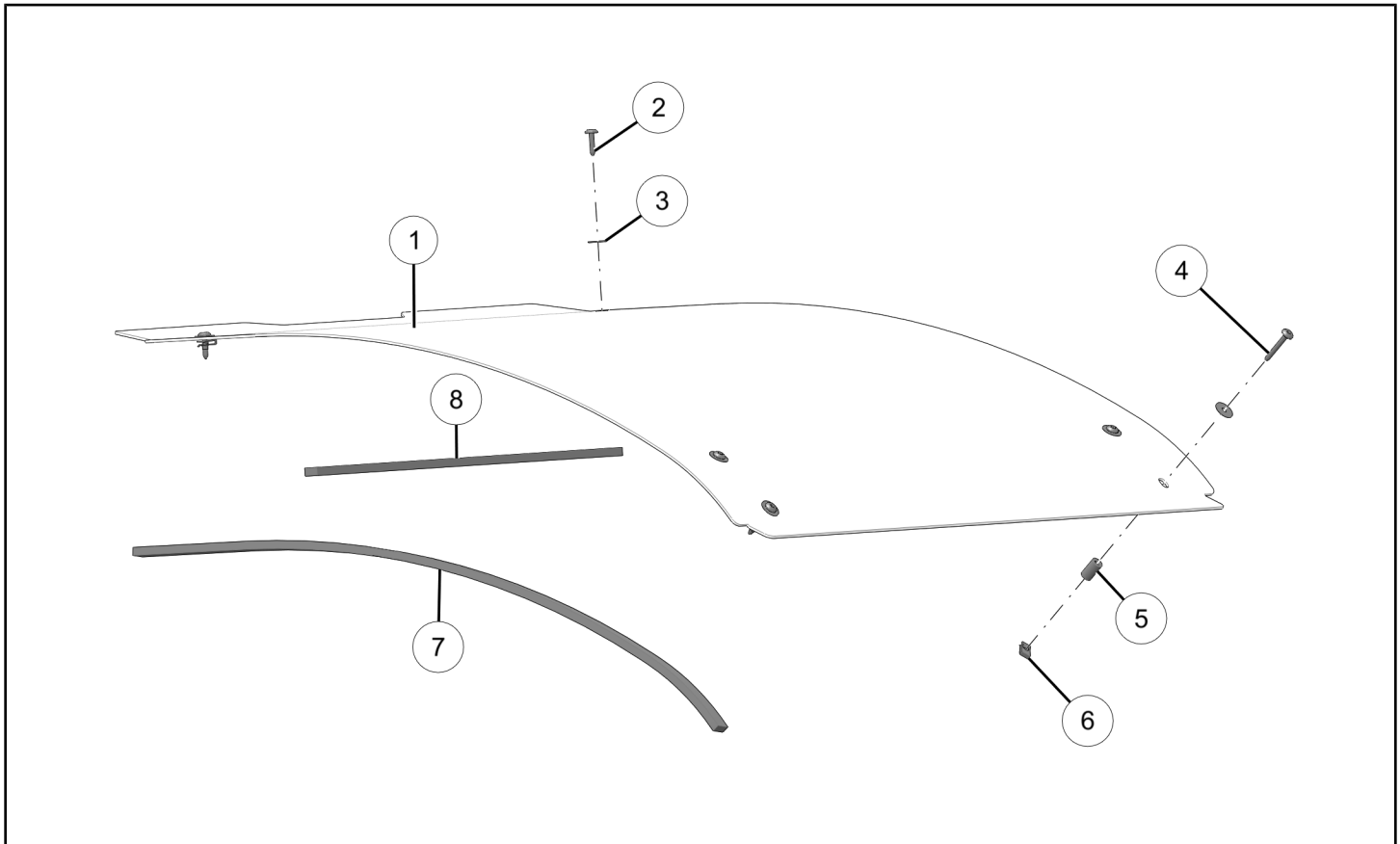
BEFORE YOU BEGIN

Read these instructions and check to be sure all parts and tools are accounted for. Please retain these installation instructions for future reference and parts ordering information.

APPLICATION

Verify accessory fitment at www.polaris.com.

KIT CONTENTS



NOTICE

XXX = Polaris® color code (For example: 458 = Black)

REF	QTY	PART DESCRIPTION	P/N AVAILABLE SEPARATELY	AVAILABLE SERVICE KIT
1	1	Panel–Roof, Aluminum	n/a	n/a
2	4	Screw–Torx® Truss Head, M6 x 1.0 x 25 mm	n/a	2208462
3	6	Washer– 0.28 x 1.00 x 0.051 mm	n/a	2208462
4	2	Screw–Torx® Truss Head, M6 x 1.0 x 50 mm	n/a	2208462
5	2	Spacer–Roof	n/a	2208462
6	6	Nut–U, Speed Nut	n/a	2208462

REF	QTY	PART DESCRIPTION	P/N AVAILABLE SEPARATELY	AVAILABLE SERVICE KIT
7	2	Seal–Roof, Side	n/a	n/a
8	2	Seal–Roof, Front / Rear	5522375	n/a

TOOLS REQUIRED

- Safety Glasses
- Socket Set, Torx® Bit
- Torque Wrench

IMPORTANT

Your Aluminum Roof Kit is exclusively designed for your vehicle. Please read the installation instructions thoroughly before beginning. Installation is easier if the vehicle is clean and free of debris. For your safety, and to ensure a satisfactory installation, perform all installation steps correctly in the sequence shown.

INSTALLATION INSTRUCTIONS

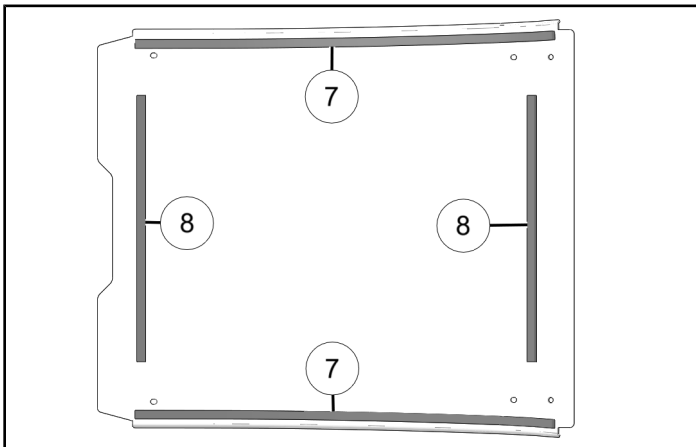
VEHICLE PREPARATION

GENERAL

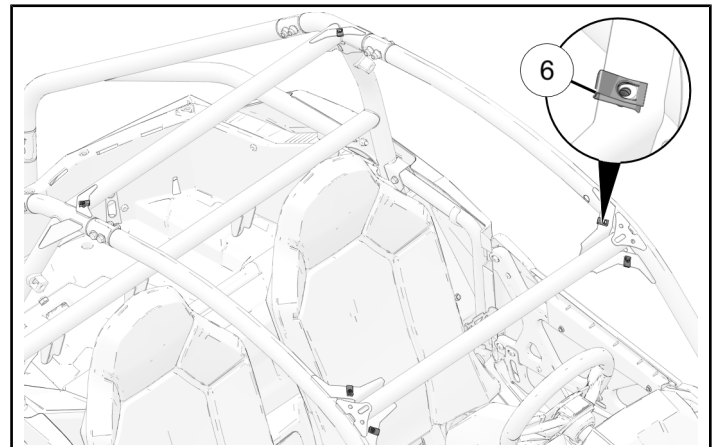
1. Shift vehicle transmission into PARK.
2. Turn ignition switch to OFF position and remove key.

ACCESSORY INSTALLATION

1. Peel backing from adhesive side of foam and apply foam pieces ⑧ and ⑦ to underside of roof panel within etched dash marks.

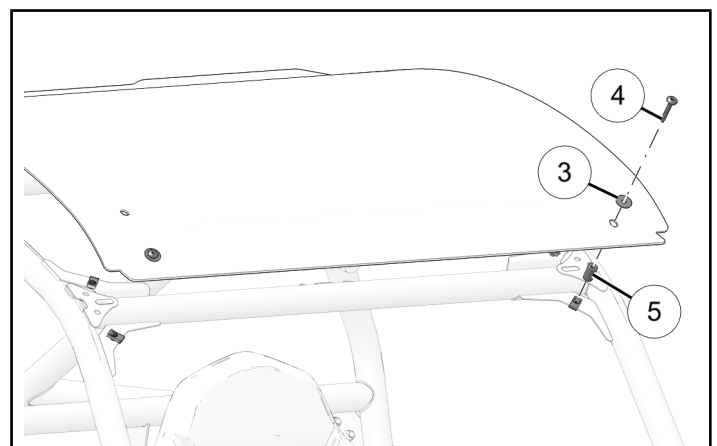


2. Install six U-nuts ⑥ onto roll-cage mounting plates.



3. Install front of roof panel with two spacers ⑤ (between roof and U-nut), two washers ③, and two fasteners ④.

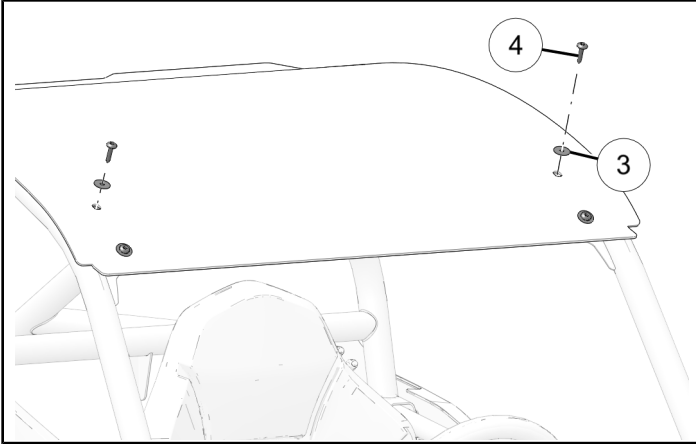
Do not torque fasteners at this time.



4. Install roof panel with two washers ③ and two fasteners ④. Torque four front fasteners ④ to specification.

TORQUE

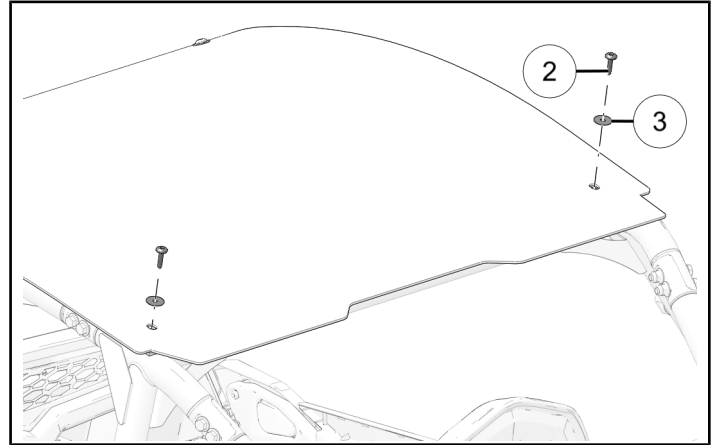
Front Roof Fasteners ④:
8 ft-lbs (11 N·m)



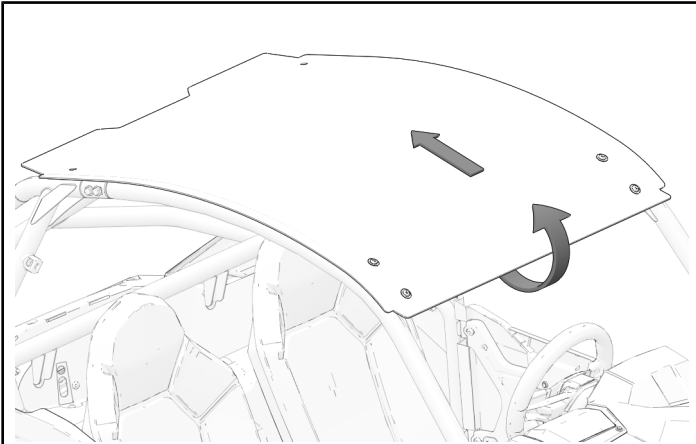
6. Install rear of roof with two washers ③ and two fasteners ②.

TORQUE

Rear Roof Fasteners ②:
8 ft-lbs (11 N·m)



5. With front of roof secured to roll-cage, begin to slowly pull roof back so that it molds to the roll-cage's curvature.



FEEDBACK FORM

A feedback form has been created for the installer to provide any comments, questions or concerns about the installation instructions. The form is viewable on mobile devices by scanning the QR code or by clicking [HERE](#) if viewing on a PC.

