

FRONT STORAGE BOX KIT

POLARIS

ENGINEERED PARTS
ACCESSORIES & APPAREL

P/N 2884235

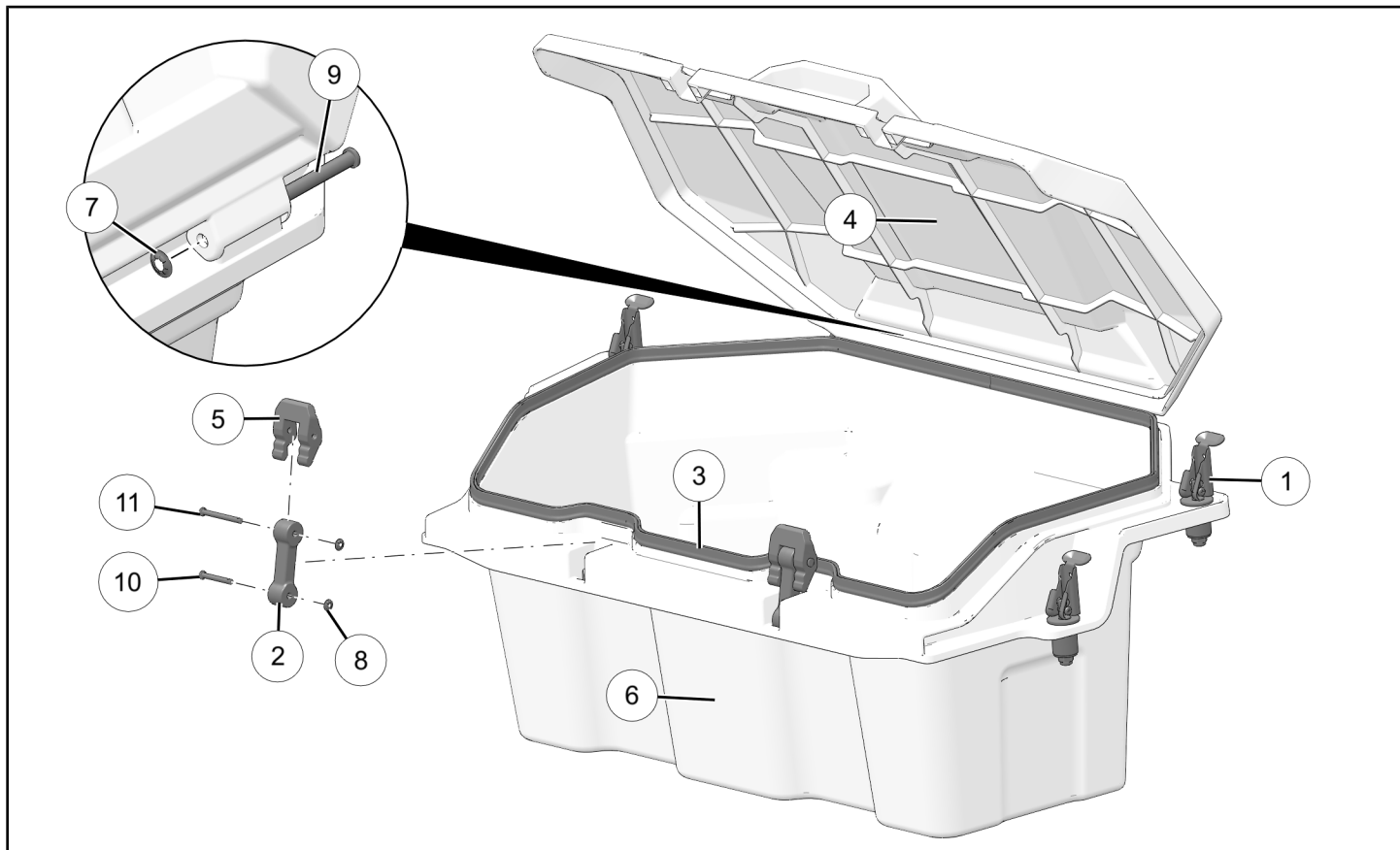
BEFORE YOU BEGIN

Read these instructions and check to be sure all parts and tools are accounted for. Please retain these installation instructions for future reference and parts ordering information.

APPLICATION

Verify accessory fitment at www.polaris.com.

KIT CONTENTS



REF	QTY	PART DESCRIPTION	P/N AVAILABLE SEPARATELY	AVAILABLE SERVICE KIT
1	4	Lock & Ride® Anchor	2876420	n/a
2	2	Body-Flex, Latch, Storage	n/a	2207770
3	1	Seal-Cargo Box	n/a	2207770
4	1	Box-Storage, Lid	n/a	n/a
5	1	Latch-Lever	n/a	n/a
6	1	Box-Storage, Base	n/a	n/a
7	2	Nut-Push, 5/16 in	n/a	2207770
8	4	Nut-Push, 3/16 in	n/a	2207770

REF	QTY	PART DESCRIPTION	P/N AVAILABLE SEPARATELY	AVAILABLE SERVICE KIT
9	2	Pin—Clevis, 31.0 x 2.25 mm	n/a	2207770
10	2	Pin—Clevis, 19 x 1.31 mm	n/a	2207770
11	2	Pin—Clevis, 19.0 x 1.81 mm	n/a	2207770

TOOLS REQUIRED

None

IMPORTANT

Your Front Storage Box Kit is exclusively designed for your vehicle. Please read the installation instructions thoroughly before beginning. Installation is easier if the vehicle is clean and free of debris. For your safety, and to ensure a satisfactory installation, perform all installation steps correctly in the sequence shown.

INSTALLATION INSTRUCTIONS

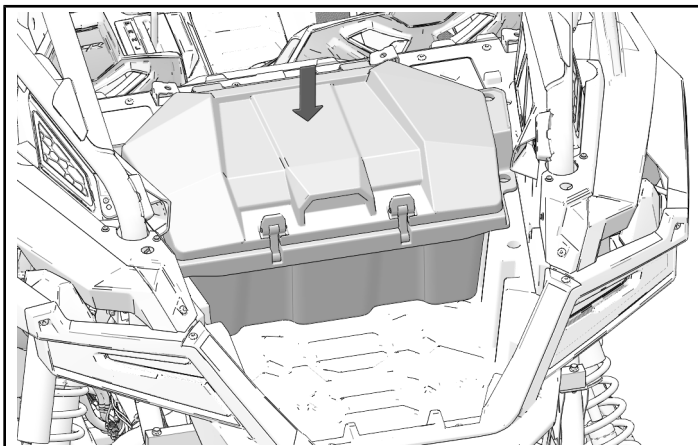
VEHICLE PREPARATION

GENERAL

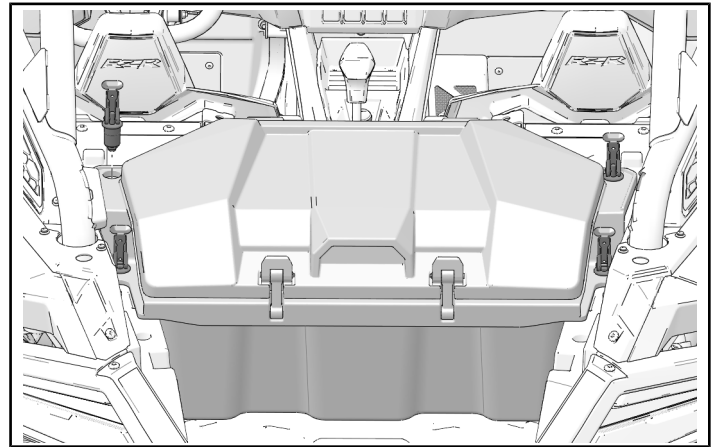
1. Shift vehicle transmission into PARK.
2. Turn key to OFF position and remove from vehicle.
3. Install *Rear Storage Box Kit* first, if applicable.

ACCESSORY INSTALLATION

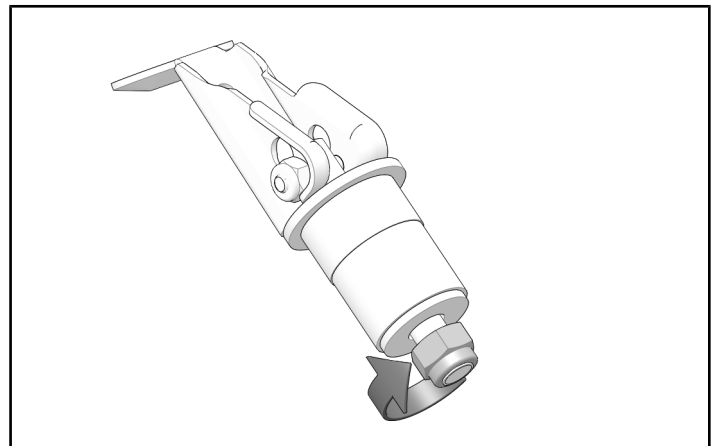
1. Place pre-assembled storage box in front-most part of cargo box. Make sure Lock & Ride® storage box holes are aligned with mounting holes in cargo box.



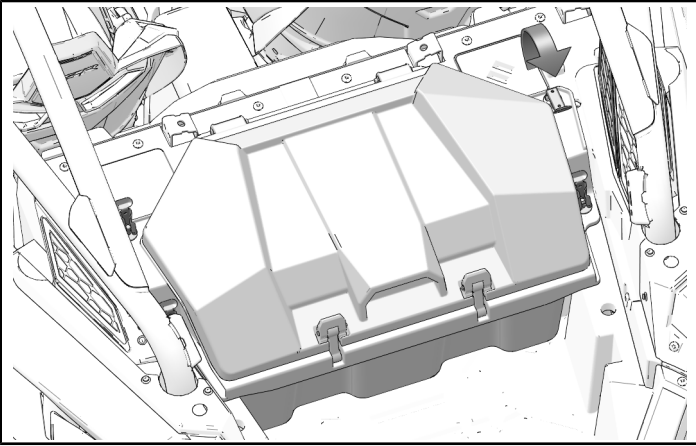
2. Place four Lock & Ride® assemblies in four aligned mounting holes.



3. Lock & Ride® assemblies may need adjustment. Tighten or loosen bottom nut depending on fitment.



4. Make sure Lock & Ride® assemblies are fully seated before closing top lever and securing storage box.



INSTRUCTION FEEDBACK FORM

A feedback form has been created for the installer to provide any comments, questions or concerns about the installation instructions. The form is viewable on mobile devices by scanning the QR code or by clicking [HERE](#) if viewing on a PC.

