

# ALUMINUM ROOF KIT



P/N 2884551-XXX

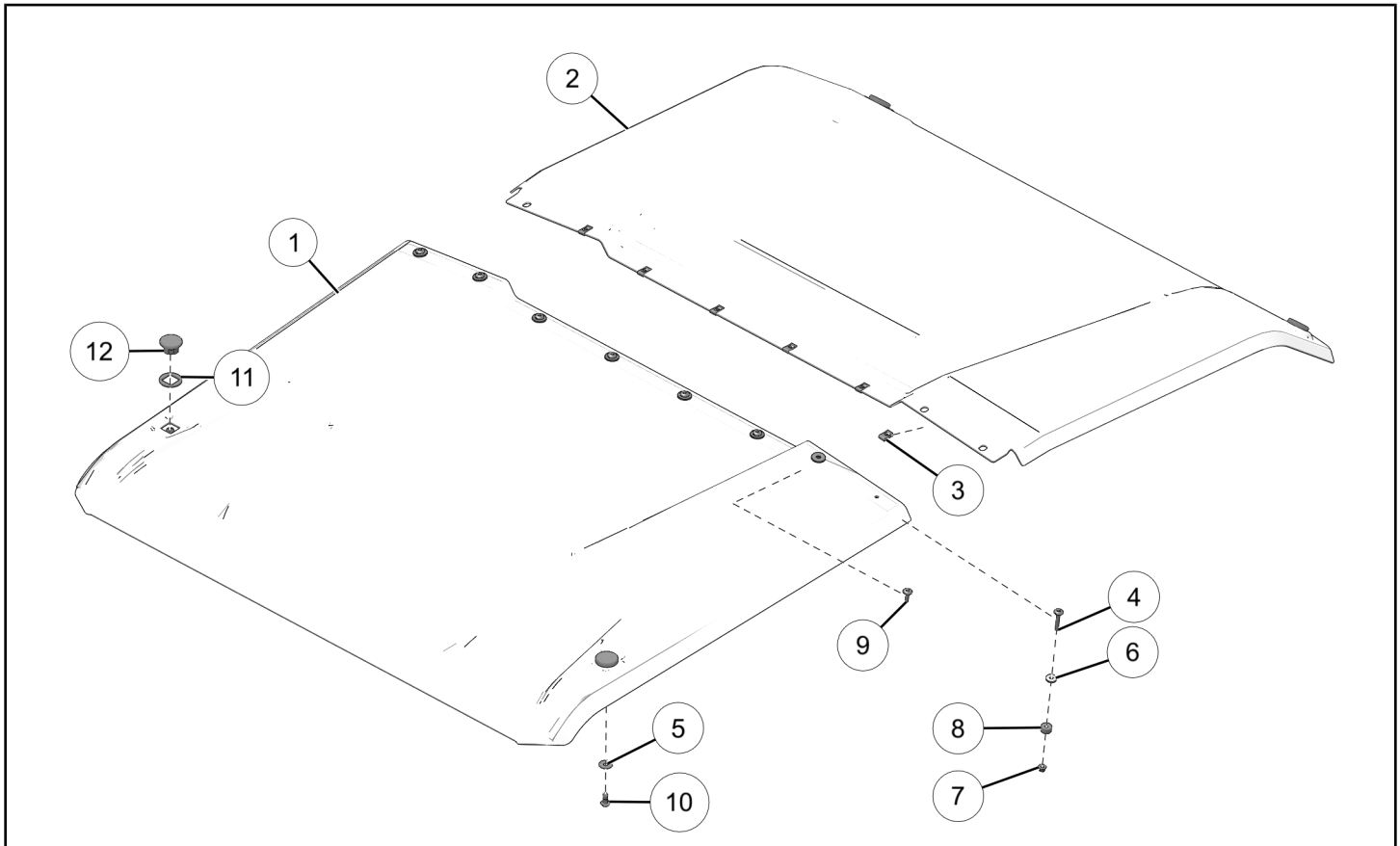
## BEFORE YOU BEGIN

Read these instructions and check to be sure all parts and tools are accounted for. Please retain these installation instructions for future reference and parts ordering information.

## APPLICATION

Verify accessory fitment at [www.polaris.com](http://www.polaris.com).

## KIT CONTENTS



REF	QTY	PART DESCRIPTION	P/N AVAILABLE SEPARATELY	AVAILABLE SERVICE KIT
1	1	Panel–Roof, Front	n/a	n/a
2	1	Panel–Roof, Rear	n/a	n/a
3	6	Nut–U, Clip	n/a	2208300
4	2	Screw–Torx® Truss Head, M6 x 1.0 x 40 mm	n/a	2208300
5	4	Washer– 8.4 x 24.0 x 2.0 mm	n/a	2208300
6	8	Washer–Rubber Bonded, Conical	n/a	2208300
7	2	Nut–Hex Flange, Nylon Locking, M6 x 1.0 mm	n/a	2208300
8	2	Spacer–Nylon	n/a	2208300

REF	QTY	PART DESCRIPTION	P/N AVAILABLE SEPARATELY	AVAILABLE SERVICE KIT
9	6	Screw–Torx® Truss Head, M6 x 1.0 x 25 mm	n/a	2208300
10	4	Screw–Torx® Truss Head, M8 x 1.25 x 20 mm	n/a	2208300
11	4	Spacer–Rubber, Roof Mount	n/a	2208300
12	4	Cap–Insert, M8	n/a	2208300
13	1	Tape–Foam, Seal, Seam (not shown)	5814948	n/a
14	1	Seal–Bulb, D Profile, 20 x 10.5 x 1150 mm (not shown)	n/a	n/a

## TOOLS REQUIRED

- Safety Glasses
- Hex Key Set, Metric
- Socket Set, Hex Bit, Metric
- Socket Set, Torx® Bit
- Torque Wrench

## IMPORTANT

Your Aluminum Roof Kit is exclusively designed for your vehicle. Please read the installation instructions thoroughly before beginning. Installation is easier if the vehicle is clean and free of debris. For your safety, and to ensure a satisfactory installation, perform all installation steps correctly in the sequence shown.

## INSTALLATION INSTRUCTIONS

### VEHICLE PREPARATION

#### GENERAL

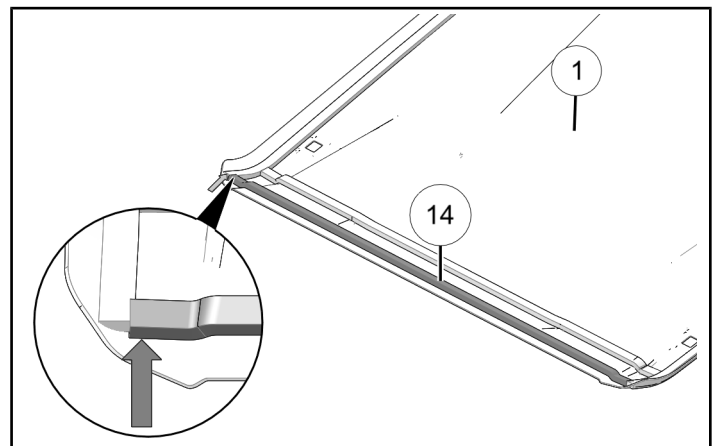
1. Park vehicle on a flat surface.
2. Shift vehicle into PARK.
3. Turn key to OFF position and remove key.

### ACCESSORY INSTALLATION

#### WINDSHIELD EQUIPPED VEHICLES ONLY

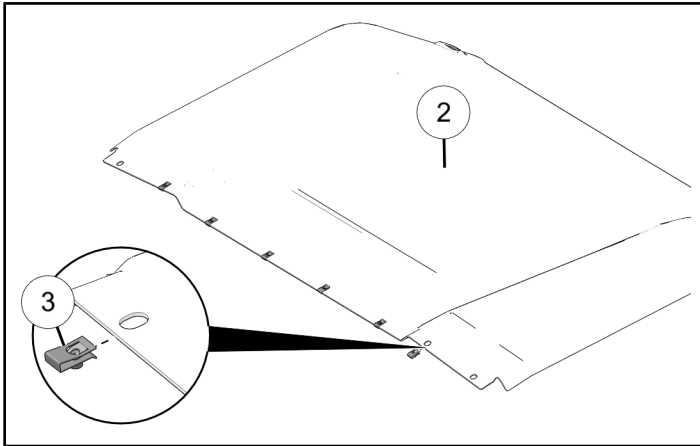
For vehicles without windshields skip to next section.

1. Peel backing from bulb seal ⑭ and apply to underside of front roof panel ①. Align bulb seal across width of roof panel in line with ends of pre-installed seal, approximately 1-3/16 in (30 mm) from the edge of the roof.

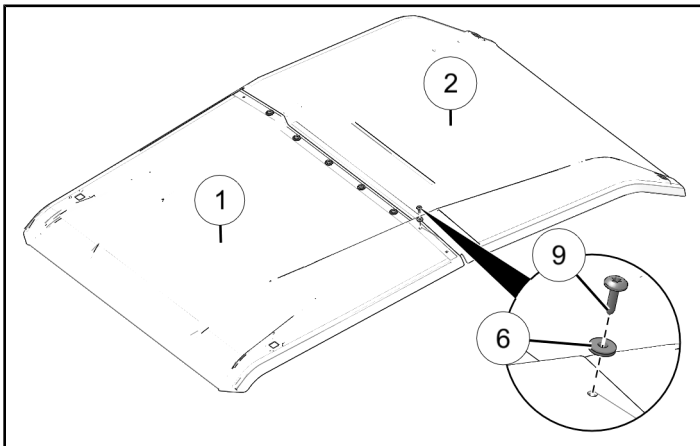


## ALL VEHICLES

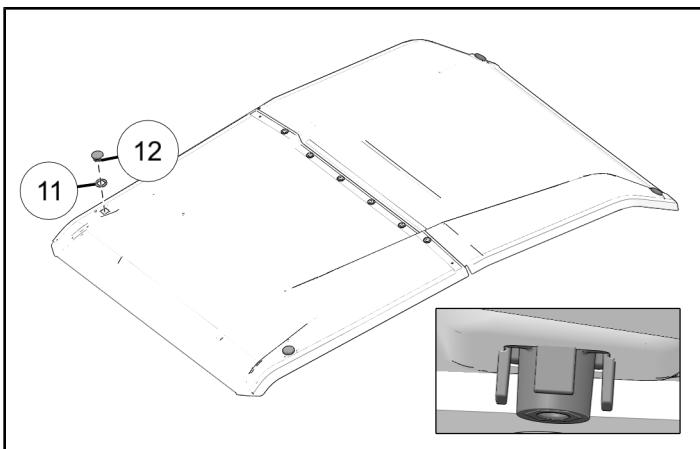
1. Install six U-nuts ③ onto rear roof panel ②.



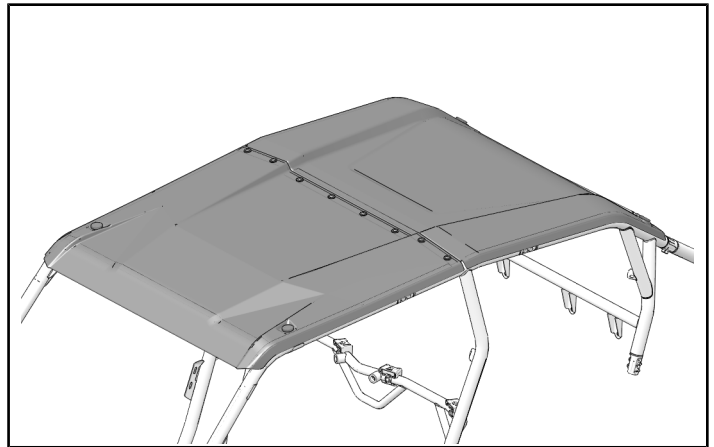
2. Put front roof panel ① over rear roof panel ② and loosely install with six screws ⑨ and six conical washers ⑥.



3. Install four cap inserts ⑫ and four rubber spacers ⑪ into front and rear roof panels. Push cap insert until it engages underside of roof.



4. Put roof assembly on top of roll-cage.



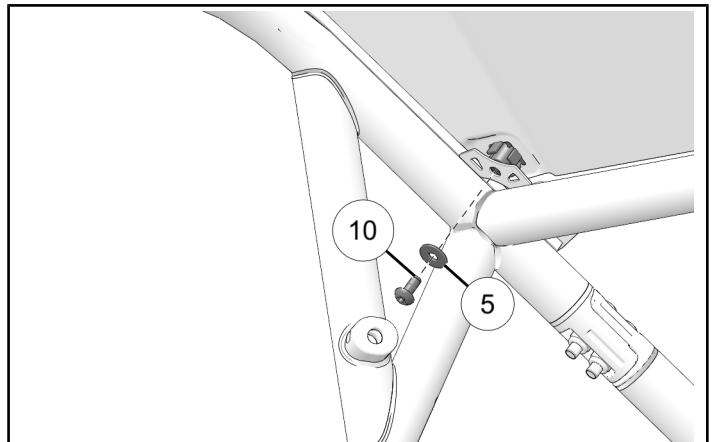
5. Loosely install roof panel to roll-cage with four fasteners ⑩ and four washers ⑤.

Do not torque fasteners at this time.

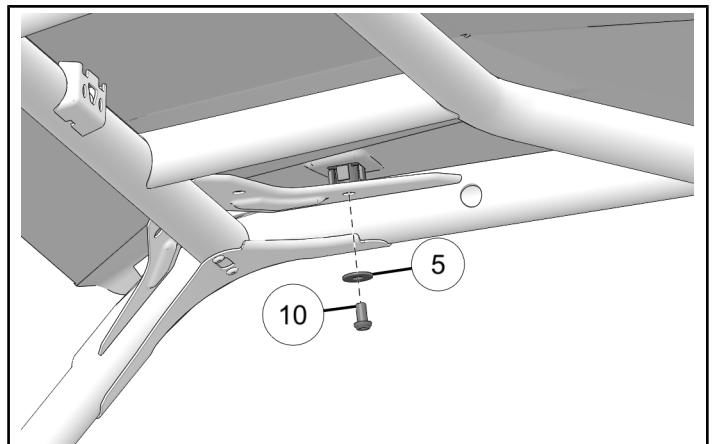
### NOTICE

One side shown; other side similar.

- Rear



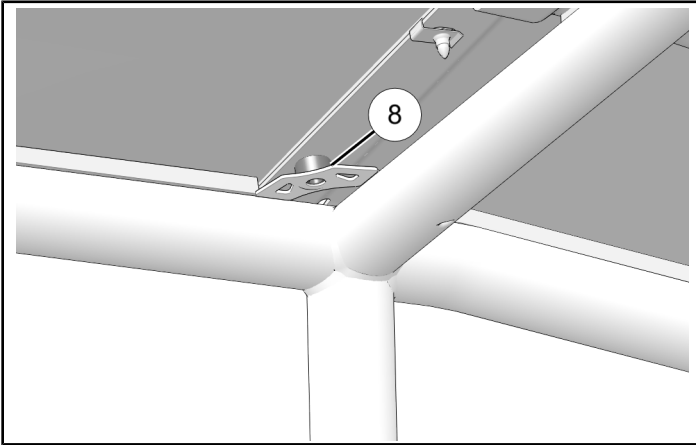
- Front



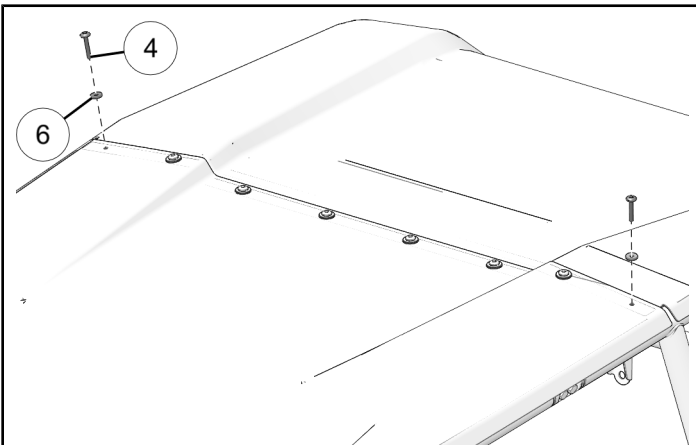
6. Align one spacer ⑧ with roof and roll-cage roof mount.

**NOTICE**

One side shown; other side similar.



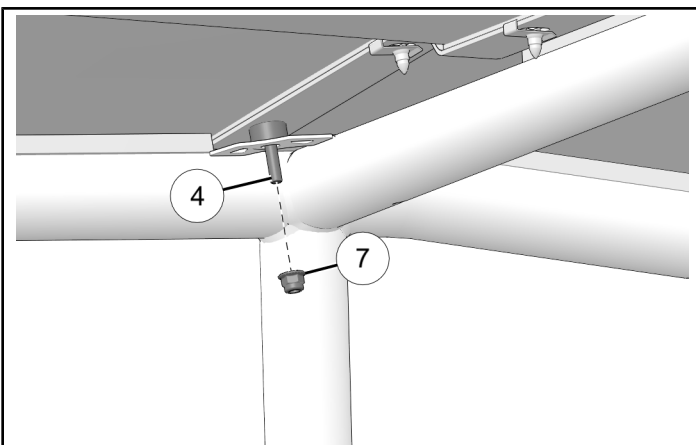
7. Put two screws ④ and two conical washers ⑥ through roof and previously installed spacer.



8. Install two nuts onto previously installed screws ④. Counter-hold nuts and two screws to specification.

**TORQUE**

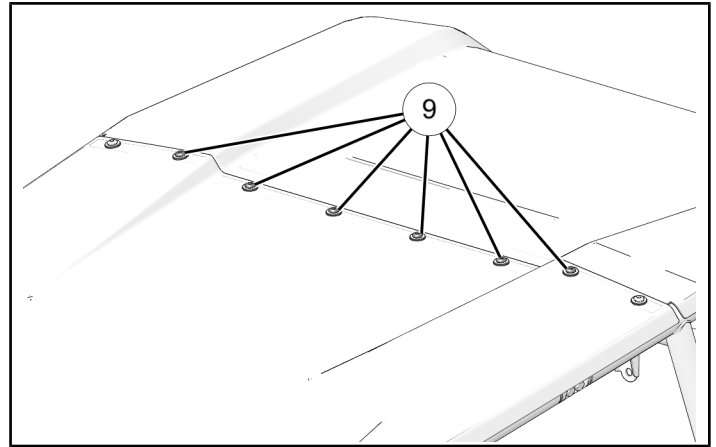
Roof Fasteners ④:  
**88 in-lbs (10 N·m)**



9. Torque six roof fasteners ⑨ to specification.

**TORQUE**

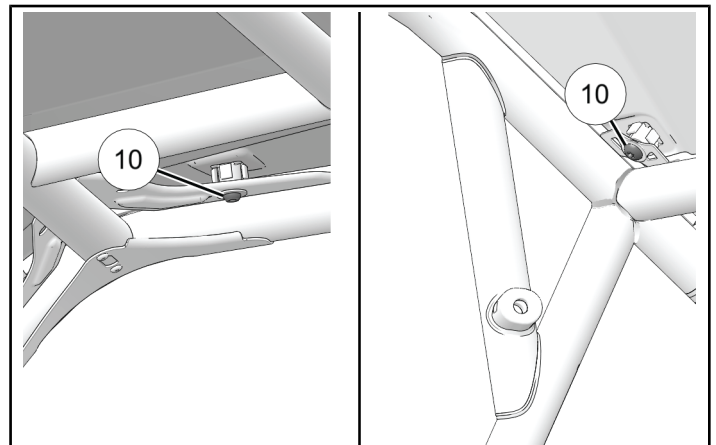
Roof Fasteners ⑨:  
**88 in-lbs (10 N·m)**



10. Torque front and rear roof fasteners ⑩ to specification.

**TORQUE**

Roof Fasteners ⑩:  
**15 ft-lbs (20 N·m)**



## INSTRUCTION FEEDBACK FORM

A feedback form has been created for the installer to provide any comments, questions or concerns about the installation instructions. The form is viewable on mobile devices by scanning the QR code or by clicking [HERE](#) if viewing on a PC.

