

REAR BUMPER KIT



P/N 2884514-XXX; 2884516-XXX

BEFORE YOU BEGIN

Read these instructions and check to be sure all parts and tools are accounted for. Please retain these installation instructions for future reference and parts ordering information.

APPLICATION

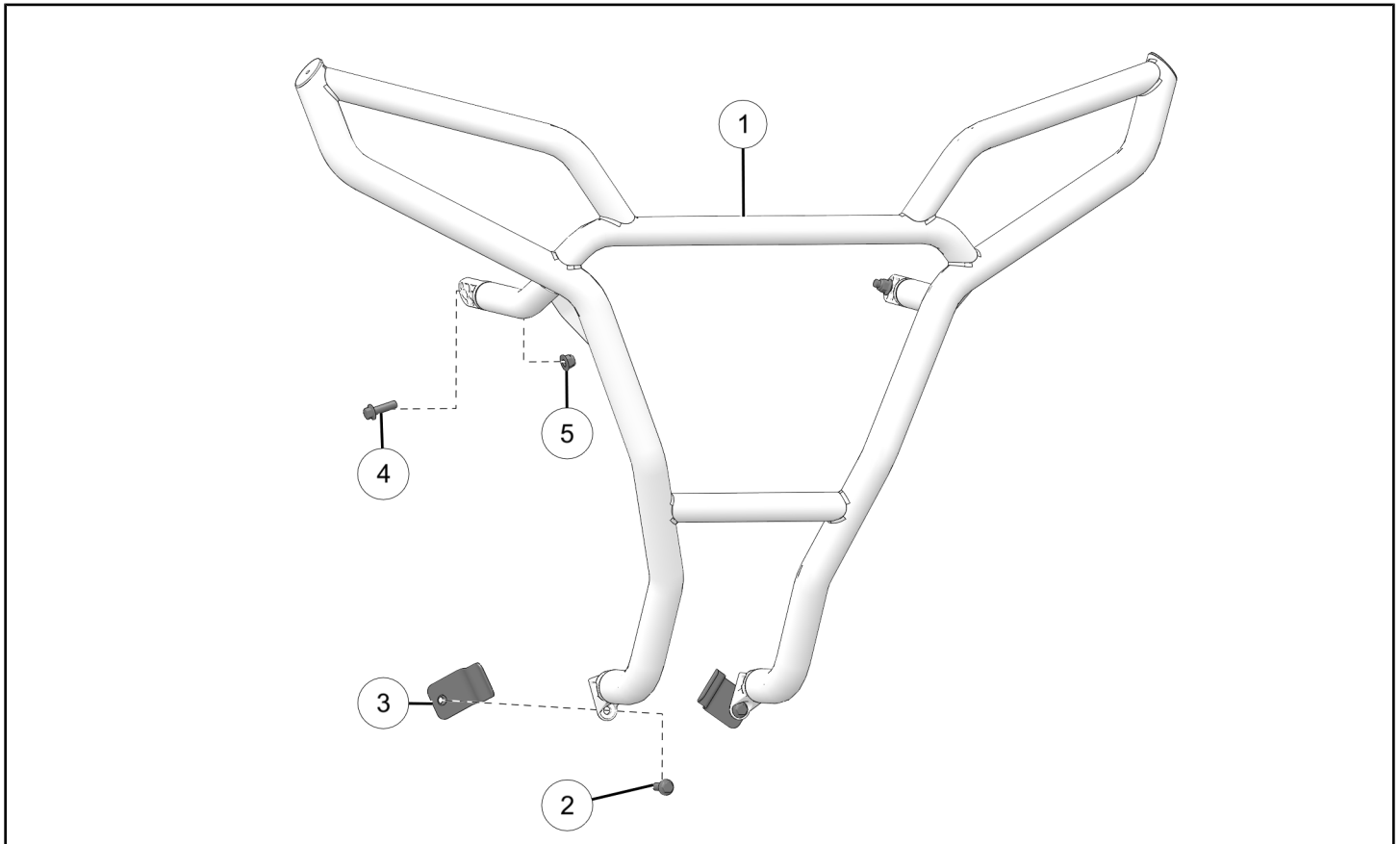
Verify accessory fitment at www.polaris.com.

KIT CONTENTS

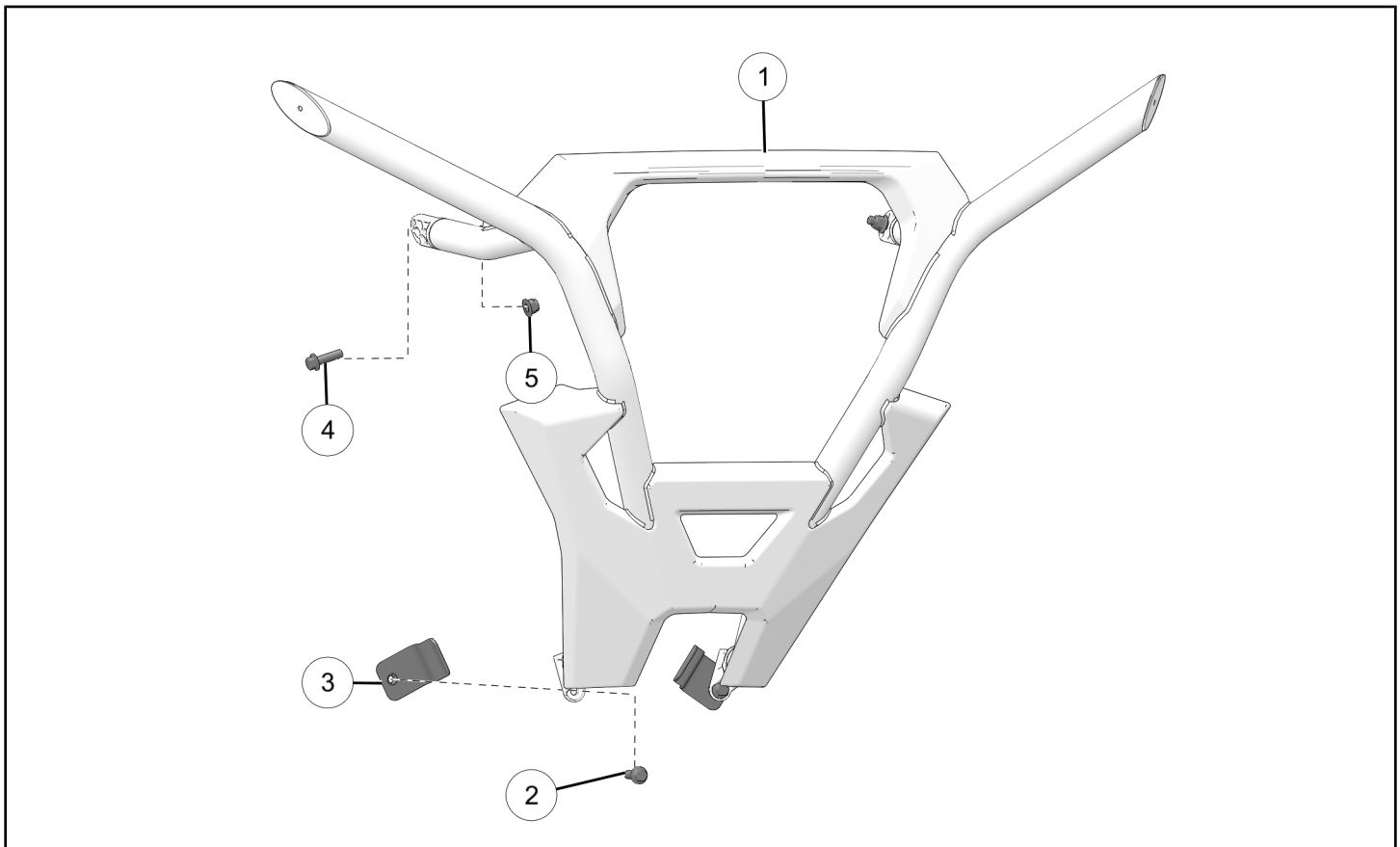
NOTICE

XXX = Polaris® color code (For example: 458 = Black)

PREMIUM REAR BUMPER KIT P/N 2884514-XXX



BASIC REAR BUMPER KIT P/N 2884516-XXX



REF	QTY	PART DESCRIPTION	P/N AVAILABLE SEPARATELY	AVAILABLE SERVICE KIT
1	1	Weld-Bumper, Rear	n/a	n/a
2	2	Screw-Hex Flange, Nylon Locking, M10 x 1.5 x 35 mm	n/a	2208737
3	2	Plate-Weld Nut, Bumper, Rear	n/a	2208737
4	2	Screw-Hex Flange, M10 x 1.5 x 35 mm	n/a	2208737
5	2	Nut-Nylon Locking, M10 x 1.5 mm	n/a	2208737

TOOLS REQUIRED

- Safety Glasses
- Socket Set, Metric
- Socket Set, Torx® Bit
- Torque Wrench
- Wrench Set, Metric

IMPORTANT

Your Rear Bumper Kit is exclusively designed for your vehicle. Please read the installation instructions thoroughly before beginning. Installation is easier if the vehicle is clean and free of debris. For your safety, and to ensure a satisfactory installation, perform all installation steps correctly in the sequence shown.

INSTALLATION INSTRUCTIONS

NOTICE

Premium Rear Bumper, P/N 2884514 shown; others similar.

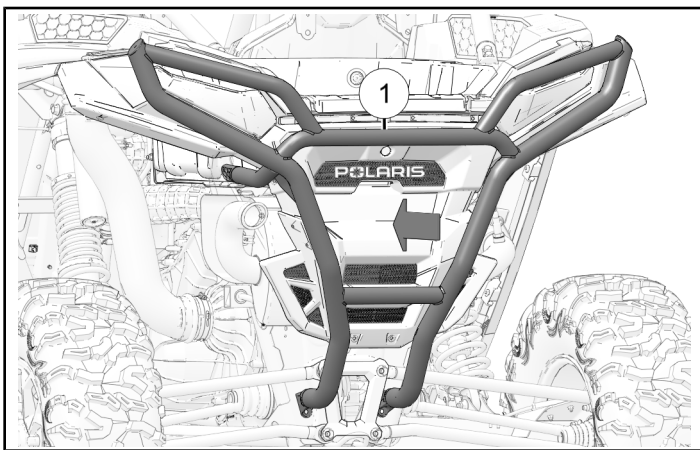
VEHICLE PREPARATION

GENERAL

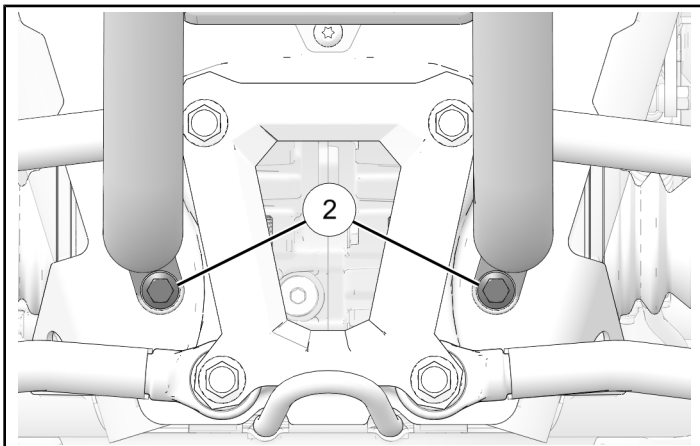
1. Park vehicle on a flat surface.
2. Shift vehicle into PARK.
3. Turn key to OFF position and remove key.

ACCESSORY INSTALLATION

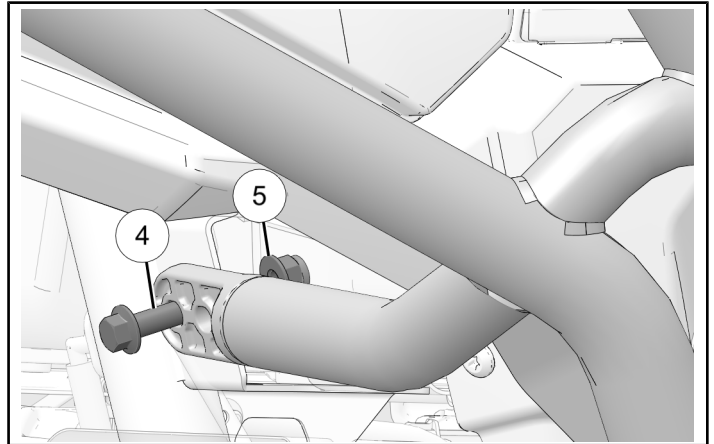
1. Align rear bumper ① with transmission bracket and upper bumper mounts.



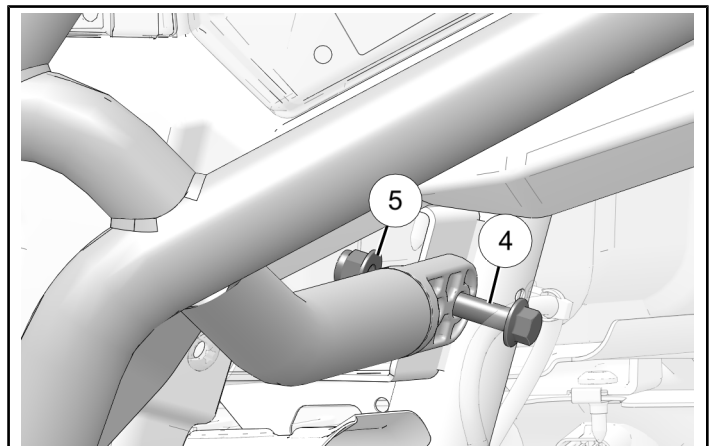
2. Put two bolts ② through lower bumper mounts and through transmission bracket.



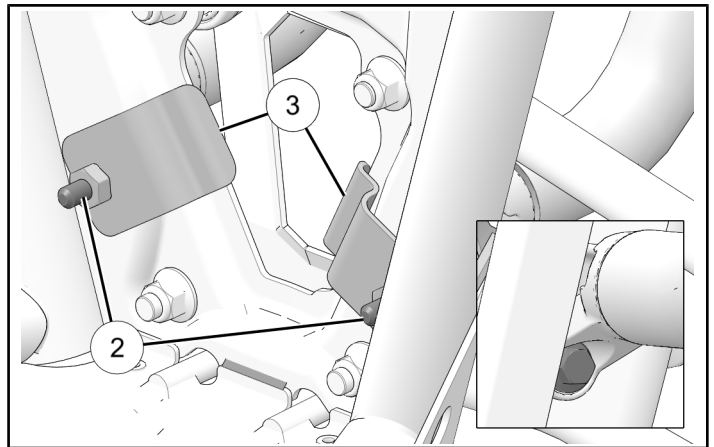
3. Put one bolt ④ through bumper and mount. Loosely bolt with one nut ⑤.



4. Put one bolt ④ through bumper and mount. Loosely install bolt with one nut ⑤.



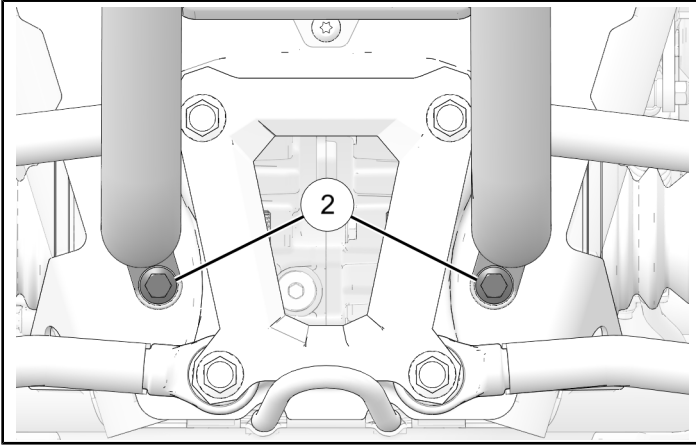
5. Loosely install two weld nut plates ③ to transmission bracket with previously installed bolts ②.



6. Hold weld plates in position and torque two bolts ② to specification.

TORQUE

Lower Mounting Bolts ②:
33 ft-lbs (45 N·m)



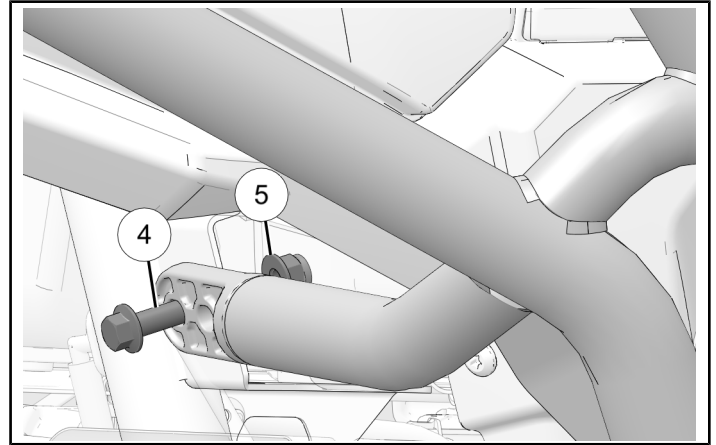
7. Counter-hold nuts ⑤ and torque upper mounting bolts ④ to specification.

NOTICE

One side shown; other side similar.

TORQUE

Upper Mounting Bolts ④:
33 ft-lbs (45 N·m)



INSTRUCTION FEEDBACK FORM

A feedback form has been created for the installer to provide any comments, questions or concerns about the installation instructions. The form is viewable on mobile devices by scanning the QR code or by clicking [HERE](#) if viewing on a PC.

