

# SCRAMBLER® BRUSH GUARD KIT



P/N 2883595

## APPLICATION

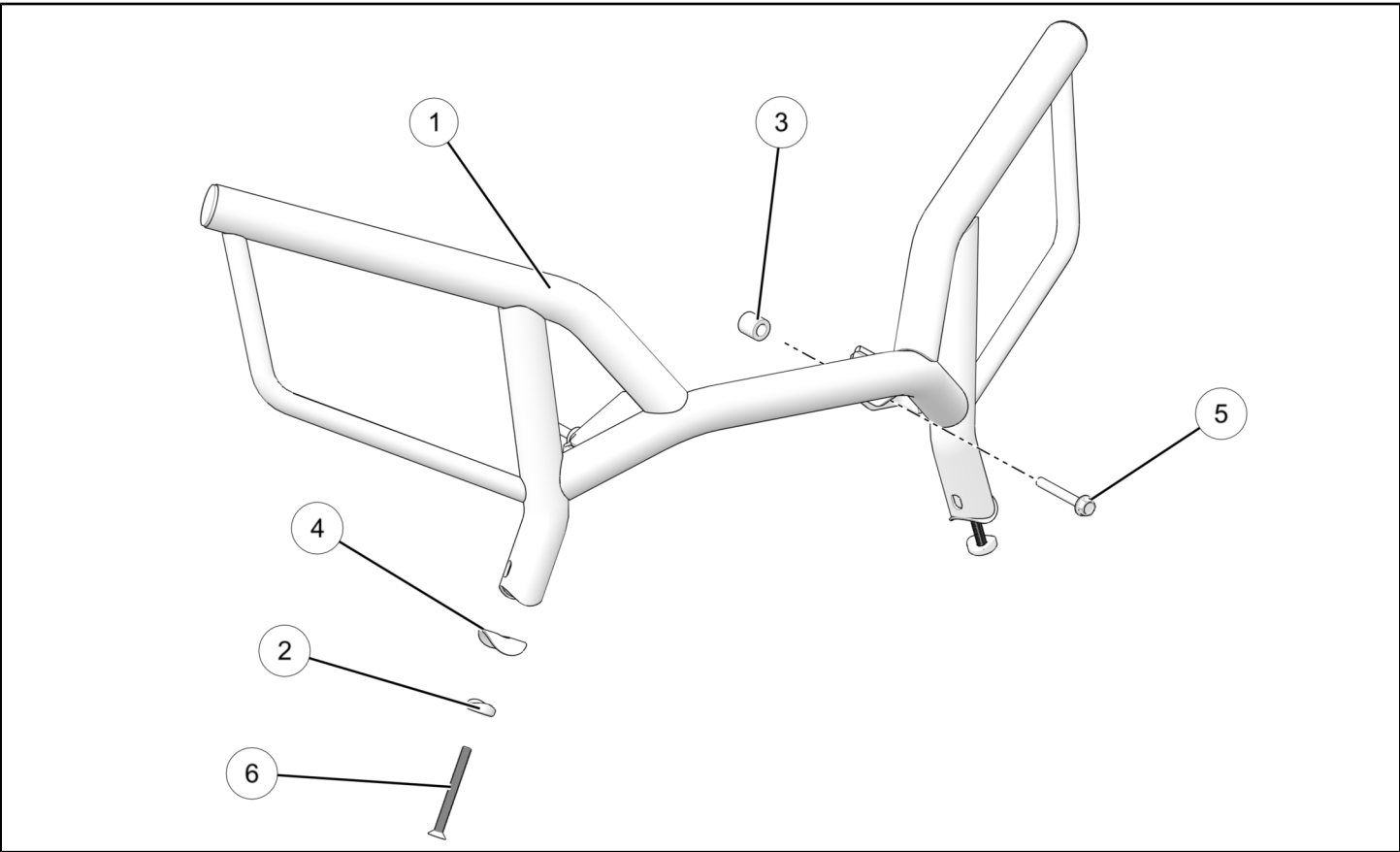
Verify accessory fitment at [Polaris.com](https://polaris.com).

## BEFORE YOU BEGIN

Read these instructions and check to be sure all parts and tools are accounted for. Please retain these installation instructions for future reference and parts ordering information.

## KIT CONTENTS

This Kit includes:



REF	QTY	PART DESCRIPTION	PART NUMBER
1	1	Brush Guard, Front	1025189
2	2	Spacer, D-cup	5143043
3	2	Spacer, Upper	5337407
4	2	Washer, Joint	5814896
5	2	Screw - HXFL M8 X 1.25 X 60	7519778
6	2	Screw - M8 X 1.25 X 80	7521187
	1	Instructions	9929936

## TOOLS REQUIRED

- Safety Glasses
- Drill
- Drill Bit: 9mm (.348"/Letter S)
- Socket Set, Hex Bit, Metric
- Socket Set, Metric
- Torque Wrench
- Wrench Set, Metric

## CONSUMABLES REQUIRED

- None

## IMPORTANT

Your Scrambler® Brush Guard Kit is exclusively designed for your vehicle. Please read the installation instructions thoroughly before beginning. Installation is easier if the vehicle is clean and free of debris. For your safety, and to ensure a satisfactory installation, perform all installation steps correctly in the sequence shown.

## ASSEMBLY TIME

Approximately 12 minutes

### NOTE

Additional time may be required for optional steps, or to accommodate other installed accessories.

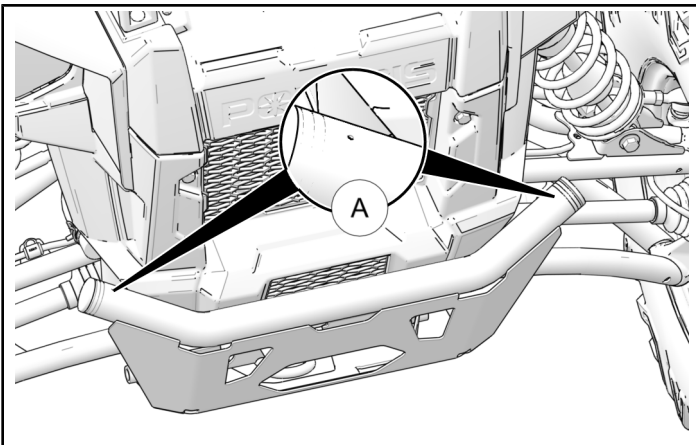
## INSTALLATION INSTRUCTIONS

### CAUTION

**BEFORE STARTING INSTALLATION**, always ensure vehicle is properly secured on a flat stable surface to avoid accidental tipping, unwanted movement and to prevent personal injury and/or damage to equipment. Shift vehicle transmission into "PARK". Turn key to "OFF" position and remove from vehicle.

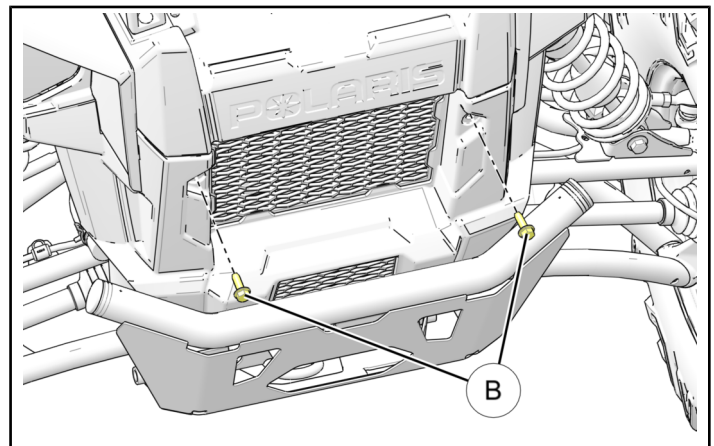
### 1. DRILL MOUNTING HOLES.

- a. Mounting hole locations are predetermined by a small pilot hole (A) on both the top and bottom side of the bumper tube. Using a drill and a 9mm (.348"/Letter S) drill bit, drill new mounting holes in the predetermined locations shown.



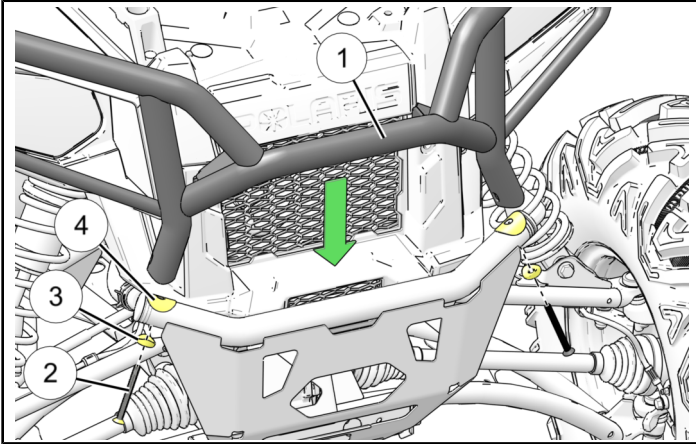
### 2. REMOVE UPPER BUMPER MOUNTING BOLTS.

- a. Remove the two upper front bumper mounting bolts (B). These will not be needed while brush guard is installed.



### 3. INSTALL BRUSH GUARD AND LOWER MOUNTING HARDWARE.

- Place the D-cup spacers ③ on the supplied screws ②.
- Lower the front brush guard ① into position as shown and place the joint washer ④ between the bumper tube and brush guard as shown.
- Insert the lower mounting screw ② with D-cup spacer ③ up through the bumper tube and into the brush guard. DO NOT TIGHTEN at this time.
- Repeat steps 3b-3c for opposite side.



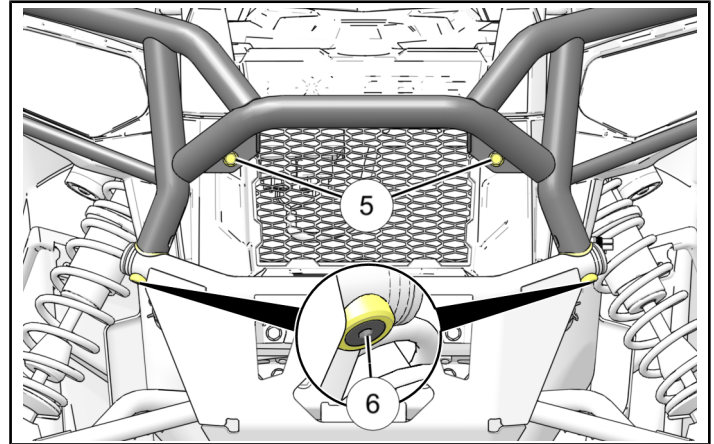
### 5. TORQUE FASTENERS.

- Torque both upper ⑤ and lower ⑥ fasteners to specification provided.

#### TORQUE

**Upper ⑤:** 17 ft. lbs. (23 Nm)

**Lower ⑥:** 15 ft. lbs. (20 Nm)

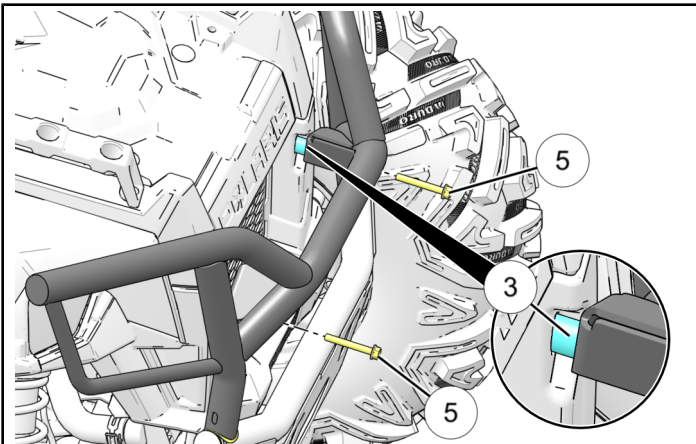


### 6. VERIFY WORK.

- Ensure all steps have been completed and all tools are accounted for.

### 4. INSTALL UPPER MOUNTING HARDWARE.

- Place upper spacer ③ into position as shown.
- Insert upper mounting screws and start by hand. DO NOT TIGHTEN at this time.
- Repeat steps 4a-4b for opposite side.



## FEEDBACK FORM

A feedback form has been created for the installer to provide any comments, questions or concerns about the installation instructions. The form is viewable on mobile devices by scanning the QR code or by clicking [HERE](#) if viewing on a PC.

### FEEDBACK FORM

