

SIDE BAG RACK KIT



P/N 2883516

INTERNATIONAL INSTRUCTIONS

DE DEUTSCH

Laden Sie die neuesten PDF-Anweisungen von www.indianmotorcycle.de herunter.

FR FRANÇAIS

Télécharger les dernières instructions en format PDF sur www.indianmotorcycle.fr.

IT ITALIANO

Scarica l'ultima versione delle istruzioni in formato PDF da www.indianmoto.it.

EN ENGLISH

Download the latest PDF instructions from www.indianmotorcycle.com.

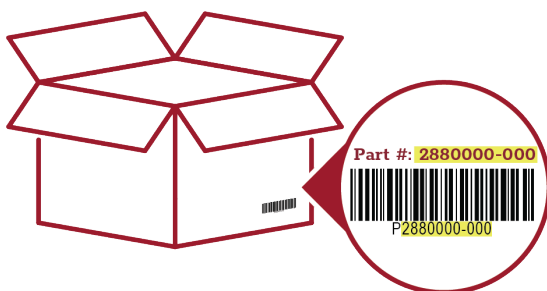
ES ESPAÑOL

Descargue las instrucciones más recientes en formato PDF de www.indianmotorcycle.mx / www.indianmotorcycle.es.

ZH 中文

从www.indianmotorcycle.cn下载最新的PDF说明。

1



2



3



4



APPLICATION

Verify accessory fitment at www.indianmotorcycle.com.

BEFORE YOU BEGIN

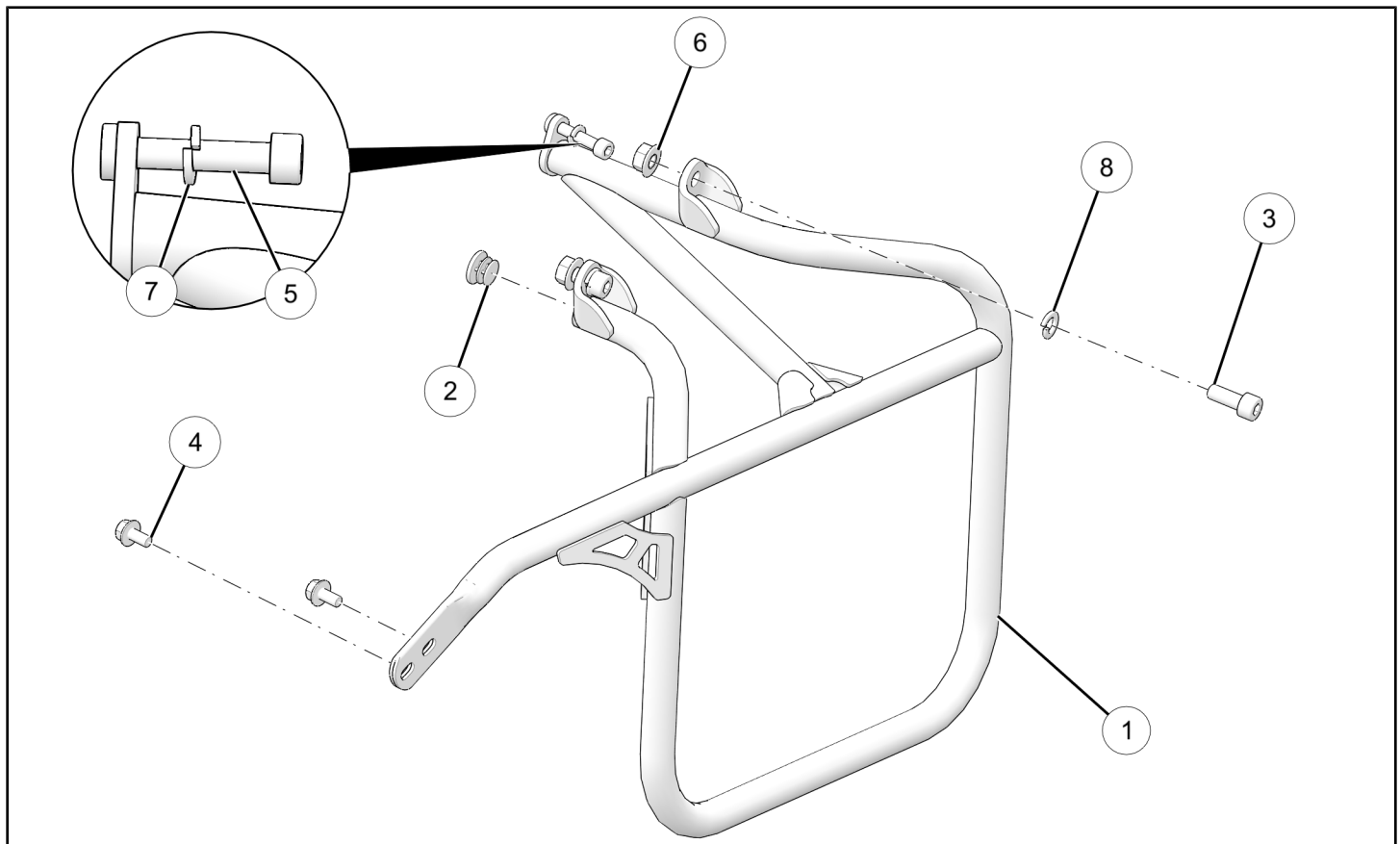
Read these instructions and check to be sure all parts and tools are accounted for. Please retain these installation instructions for future reference and parts ordering information.

REQUIRED SOLD SEPARATELY

Only parts for installation of the *Side Bag Rack Kit* are included. For complete installation, the following additional kit is required (sold separately):

- *Accessory Mounting Kit*, P/N 2883842

KIT CONTENTS



REF	QTY	PART DESCRIPTION	P/N AVAILABLE SEPARATELY
1	1	Weld-Side Bag Mount	N/A
2	1	Snap-In, Round Plug, Diameter 14	5456307
3	2	Screw-Socket Head, M8 x 1.25 x 20	7517410
4	2	Screw-Hex Flange, M6 x 1.0 x 12	7517886
5	1	Screw-Socket Head, M6 x 1.0 x 30	7521140
6	2	Nut-Hex Flange, M8 x 1.25	7547508
7	1	Washer-Lock, 6mm	7552616

REF	QTY	PART DESCRIPTION	P/N AVAILABLE SEPARATELY
8	2	Washer, 8.5 x 14.8 x 1.9	7556528
	1	Instructions	9929494

TOOLS REQUIRED

- Safety Glasses
- Hex Key Set, Metric
- Hex Key Set, Ball End, Metric
- Socket Set, Ball Hex Bit, Metric
- Socket Set, Hex Bit, Metric
- Socket Set, Metric
- Torque Wrench

IMPORTANT

Your accessory kit is exclusively designed for your vehicle. Please read the installation instructions thoroughly before beginning. Installation is easier if the vehicle is clean and free of debris. For your safety, and to ensure a satisfactory installation, perform all installation steps correctly in the sequence shown.

INSTALLATION INSTRUCTIONS

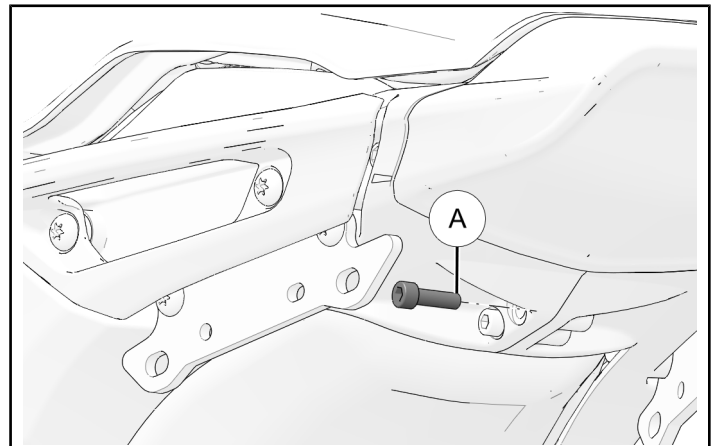
VEHICLE PREPARATION

GENERAL

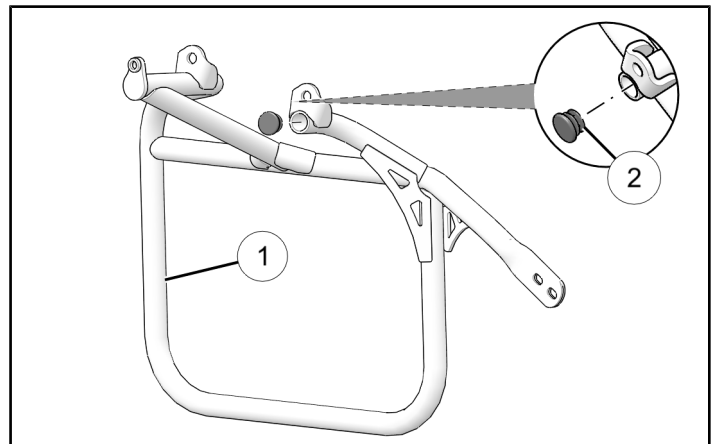
1. Turn key or ignition switch to OFF position and remove key.
2. Ensure motorcycle is parked on a flat surface, kickstand is fully extended, and vehicle is stable prior to installation.
3. Install *Accessory Mounting Kit*, P/N 2883842, as per instructions.

ACCESSORY INSTALLATION

1. Remove and discard rear-most sub-frame fastener (A).

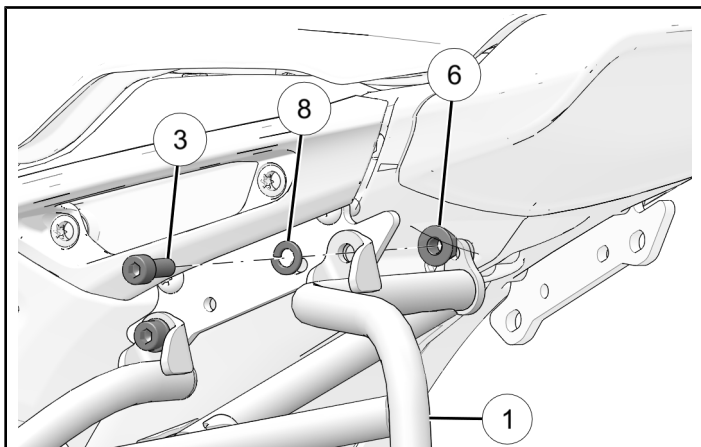


2. Firmly push round plug (2) into side bag mount (1).



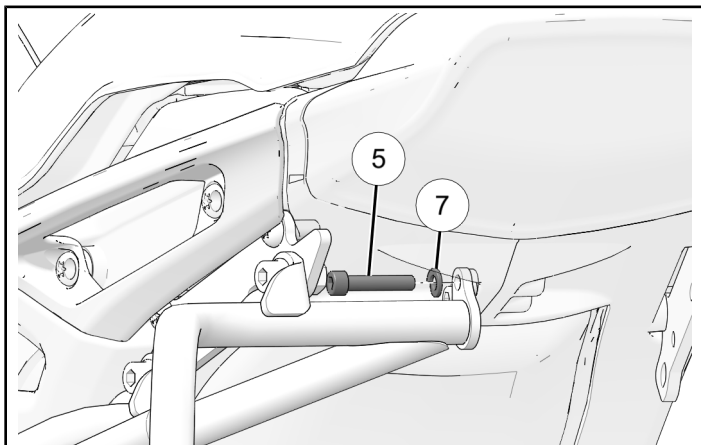
3. Align side bag mount ① with accessory mount, as shown. Loosely install with two top mounting fasteners ③, two lock washers ⑧, and two nuts ⑥.

Do not torque top mounting fasteners at this time.



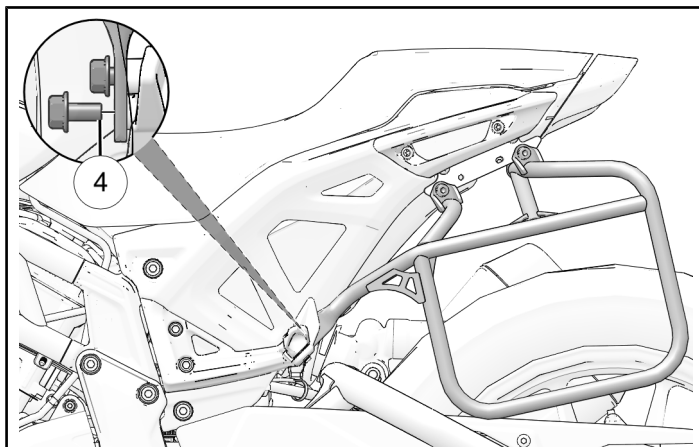
4. Loosely install side bag mount to sub-frame with one sub-frame fastener ⑤ and one lock washer ⑦.

Do not torque sub-frame fastener at this time.



5. Loosely install side bag mount to back-side of passenger foot peg with two foot peg fasteners ④.

Do not torque foot peg fasteners at this time.



6. Torque all fasteners to specification.

TORQUE

Sub-frame fastener ⑤:
96 in-lbs (11 N·m)

TORQUE

Top mounting fasteners ③:
19 ft-lbs (26 N·m)

TORQUE

Foot peg fasteners ④:
84 in-lbs (9 N·m)

FEEDBACK FORM

A feedback form has been created for the installer to provide any comments, questions or concerns about the installation instructions. The form is viewable on mobile devices by scanning the QR code or by clicking [HERE](#) if viewing on a PC.

