

PREMIUM DOOR KIT



P/N 2883717; 2889809

BEFORE YOU BEGIN

Read these instructions and check to be sure all parts and tools are accounted for. Please retain these installation instructions for future reference and parts ordering information.

APPLICATION

Verify accessory fitment at [Polaris.com](https://www.polaris.com).

INSTALLATION VIDEO

A video of the installation is viewable on mobile devices by scanning the QR code or by clicking [HERE](#) if viewing on a PC.



REQUIRED SOLD SEPARATELY

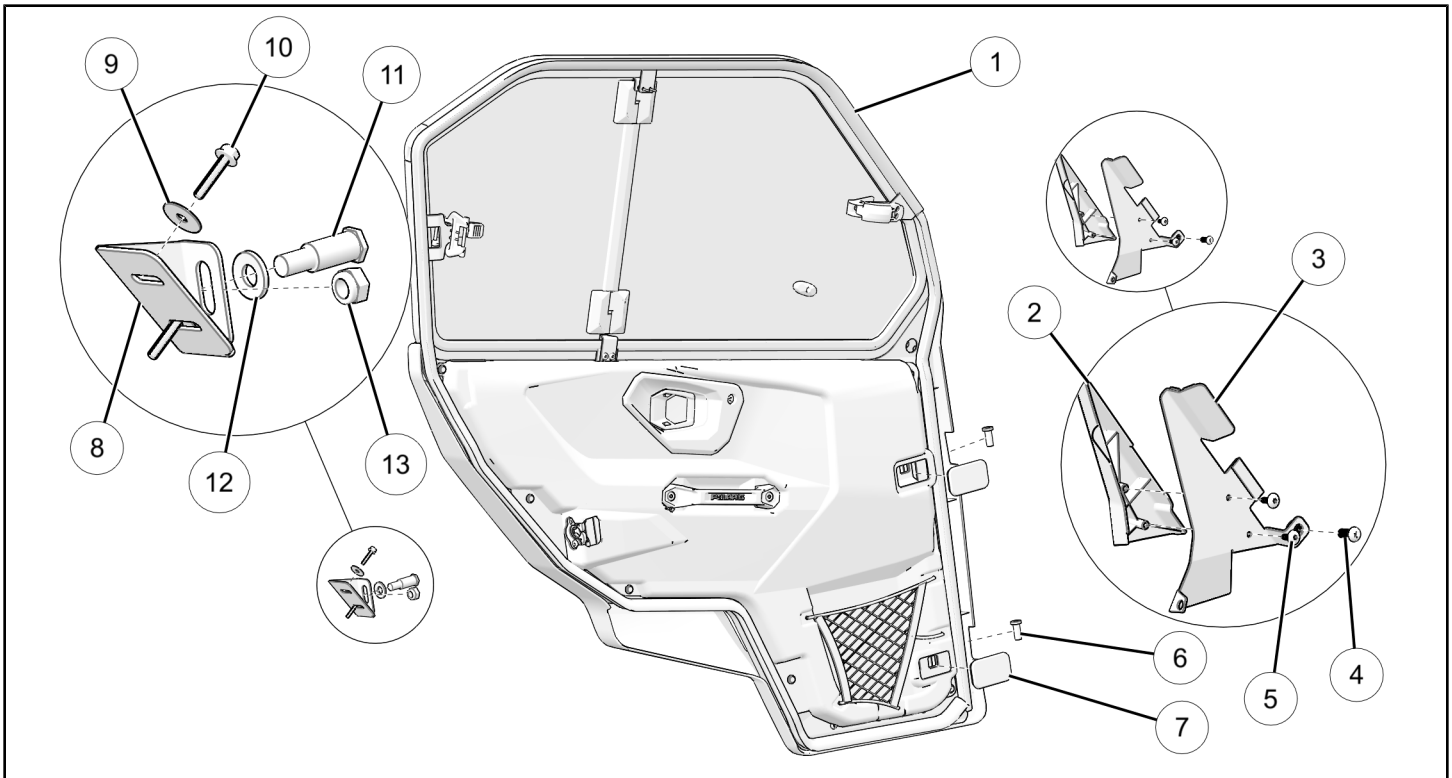
If installing on a crew model, only parts for installation of the Premium Door Kit are included. For complete installation, the following additional kit is required (sold separately):

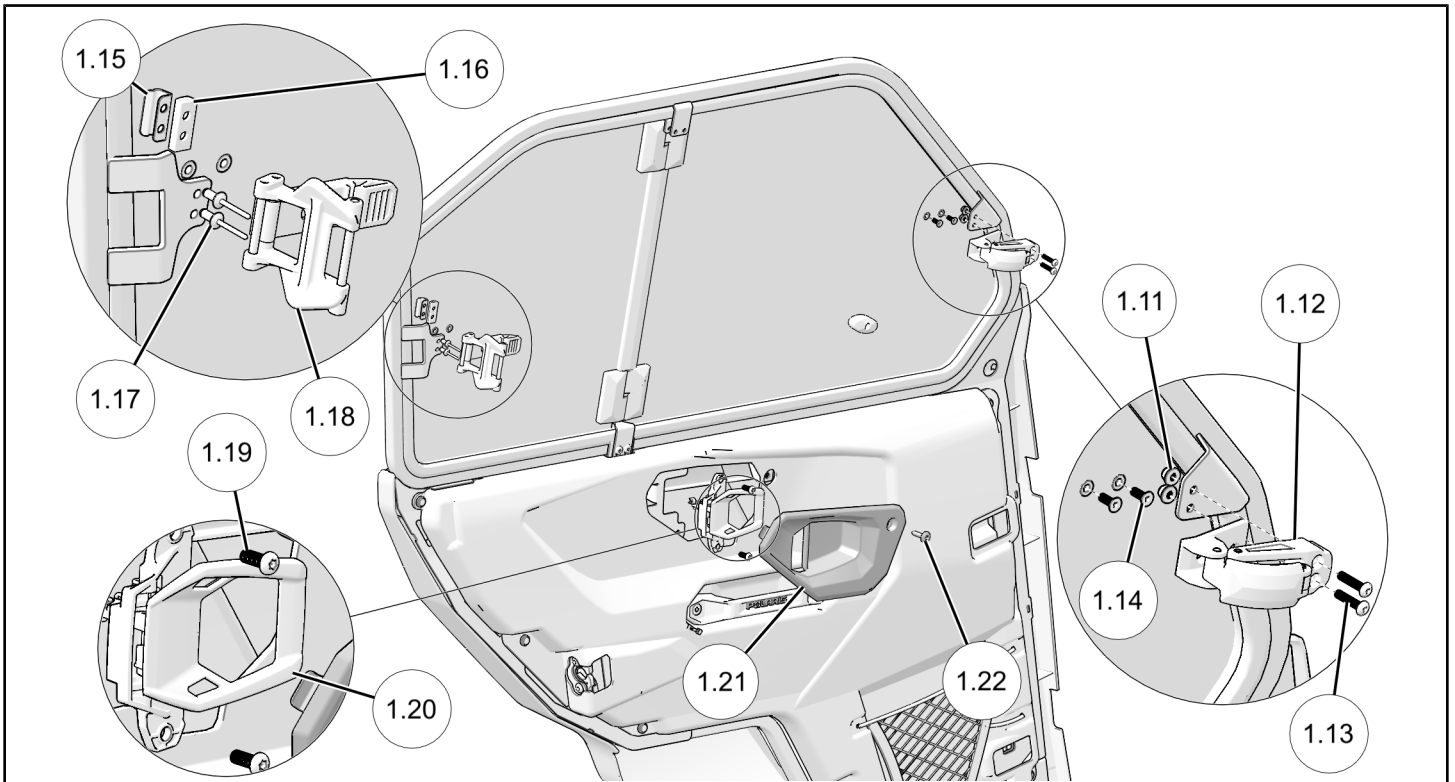
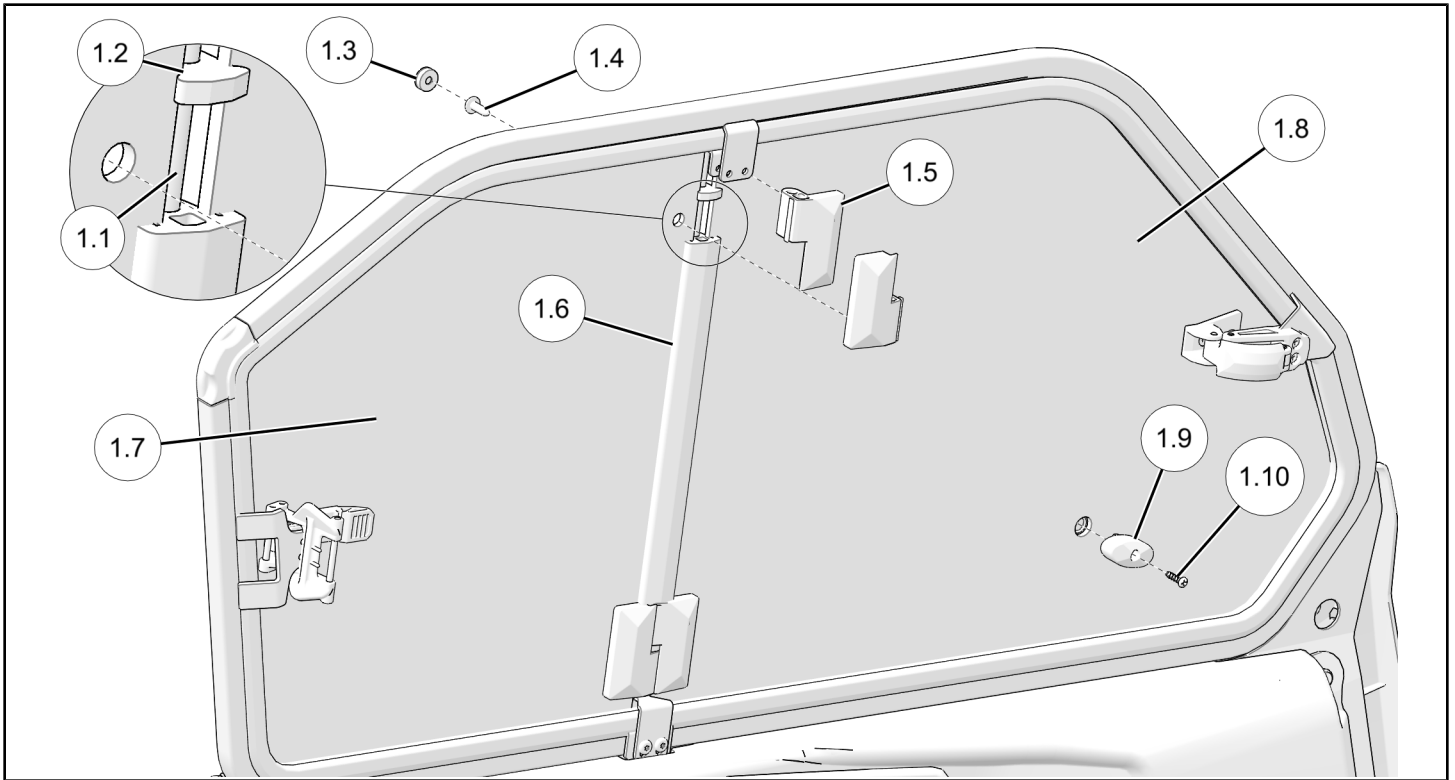
- *Premium Crew Door Kit*, P/N 2889810

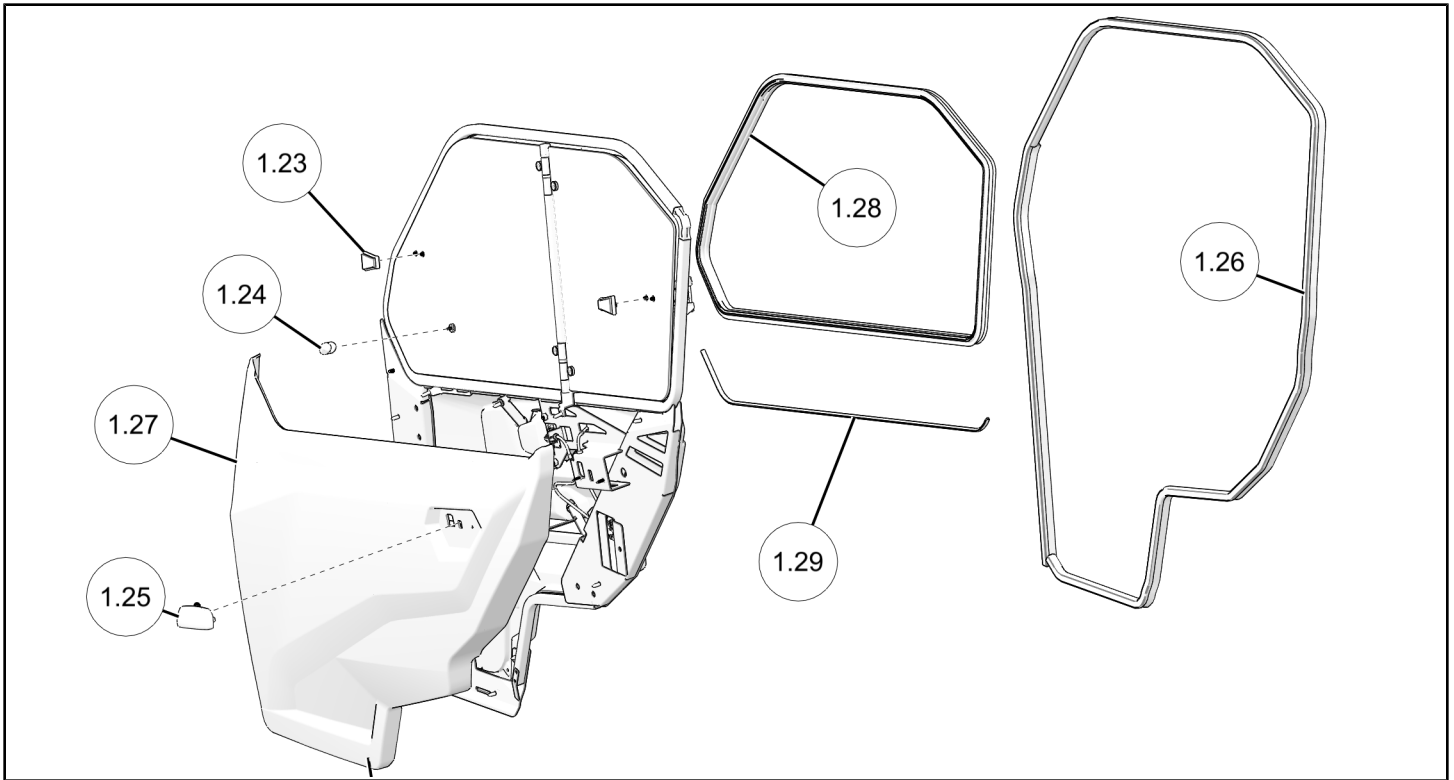
KIT CONTENTS

NOTE

Left side shown; right side similar.







REF	QTY	PART DESCRIPTION	PART NUMBER	INCLUDED IN SERVICE KIT
1	1 1	Door Assembly (includes items 1.1–1.31) Left Right (not shown)	n/a n/a	n/a n/a
1.1	1	- Pin, Hinge	n/a	2207063
1.2	2	- Seal, Hinge	n/a	2207063
1.3	4	- Cap	n/a	2207063
1.4	4	- Screw, Torx® Truss Head, High/Low #14 x 3/4 in	7519045	2207063
1.5	4	- Hinge	n/a	2207063
1.6	1	- Seal, Center	n/a	2207063
1.7	1	- Glass, Front, Left - Glass, Front, Right (not shown)	n/a	2207065 2207066
1.8	1	- Glass, Rear, Left - Glass, Rear, Right (not shown)	n/a	2207065 2207066
1.9	1	- Knob	n/a	2208019
1.10	1	- Screw, Phillips Button Head #10 x 16 x 3/4 in	n/a	2208019
1.11	2	- Nut	n/a	2208019
1.12	1	- Latch, Front	n/a	2208019
1.13	2	- Screw	n/a	2208019
1.14	2	- Screw, Hex Flat Head M5 x 14 mm	n/a	2208019
1.15	1	- Spring Clip	n/a	2208019
1.16	1	- Spring Clip Holder	n/a	2208019

REF	QTY	PART DESCRIPTION	PART NUMBER	INCLUDED IN SERVICE KIT
1.17	2	- Rivet 3/16 x 0.450 in	n/a	2208019
1.18	1	- Clamp, Rear	n/a	2208019
1.19	11	- Screw, Torx® Truss Head #14 x 3/4 in	7519045	2209792 2209793
1.20	1	- Door Handle, Inner	7082216	2209792 2209793 2208002
1.21	1	- Trim, Inner Door, Left - Trim, Inner Door, Right	n/a n/a	2209792 2209793
1.22	1	- Screw, Torx® Truss Head M6 x 1.0 x 25 mm	7519650	2209792 2209793
1.23	2	- Backer Assembly	n/a	2208019
1.24	1	- Latch Receptacle	n/a	2208019
1.25	1 1	- Handle, Outer, Left - Handle, Outer, Right (not shown)	7082354** 7082353**	2208003*
1.26	1 1	- Door Seal, Left - Door Seal, Right	n/a n/a	2211635 2211636
1.27	1 1	- Door Panel, Outer, Left - Door Panel, Outer, Right	5465626 5465627	2211771 2211772
1.28	1	- Seal, Window Trim	n/a	2211635 2211636
1.29	1	- Trim, Edge	n/a	2211635 2211636
1.30	1	- Latch Release Cable (not shown)	n/a	2209055
1.31	1	- Latch Release Cable, Rear (not shown)	n/a	2209055
2	1 1	Trim, A-Pillar, Left, Outboard Trim, A-Pillar, Right, Outboard (not shown)	n/a n/a	2207064* 2207064*
3	1 1	Trim, A-Pillar, Left, Inboard Trim, A-Pillar, Right, Inboard (not shown)	n/a n/a	2207064* 2207064*
4	2	Screw, Button Head Hex M8 x 1.25 x 30 mm	n/a	2207064*
5	4	Screw, Torx® #10 x 12 x 3/4 in	n/a	2207064*
6	4	Bushing, Hinge	n/a	2207064*
7	4	Cover, Hinge Access	n/a	2207064*
8	1 1	Bracket, Striker, Left Bracket, Striker, Right (not shown)	n/a n/a	2207064* 2207064*
9	4	Washer M6.5 x 25 x 1.5 mm	n/a	2207064*
10	4	Screw, Hex Flange M6 x 1.0 x 30 mm	n/a	2207064*
11	2	Pin, Striker	n/a	2207064*
12	2	Washer, Conical Spring M12 mm	n/a	2207064*
13	2	Nut, Hex, Locking M12 x 1.75 mm	7540000	2207064*

* Service kit contains parts and hardware required for BOTH sides of vehicle.

** Use handle PNs as shown in this table for the side indicated. Handles have LH/RH markings indicating the **opposite** side since handles were originally designed for the opposite side in other applications.

TOOLS REQUIRED

- Safety Glasses
- E-Clip Tool*
- Hex Key Set, Metric
- Pry Tool
- Screwdriver Set, Torx®
- Socket Set, Metric
- Torque Wrench
- Wrench Set, Metric

* Tool requirement dependent on specific installation.

IMPORTANT

Your Premium Door Kit is exclusively designed for your vehicle. Please read the installation instructions thoroughly before beginning. Installation is easier if the vehicle is clean and free of debris. For your safety, and to ensure a satisfactory installation, perform all installation steps correctly in the sequence shown.

INSTALLATION INSTRUCTIONS

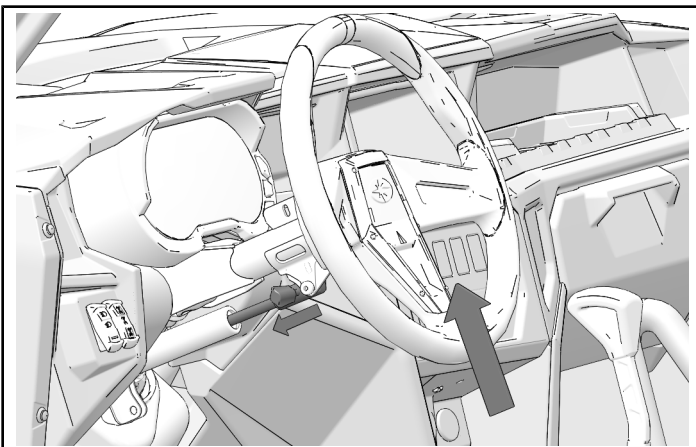
VEHICLE PREPARATION

GENERAL

1. Park vehicle on a flat surface.
2. Shift vehicle into PARK.
3. Turn key to OFF position and remove key.

FRONT SEAT REMOVAL

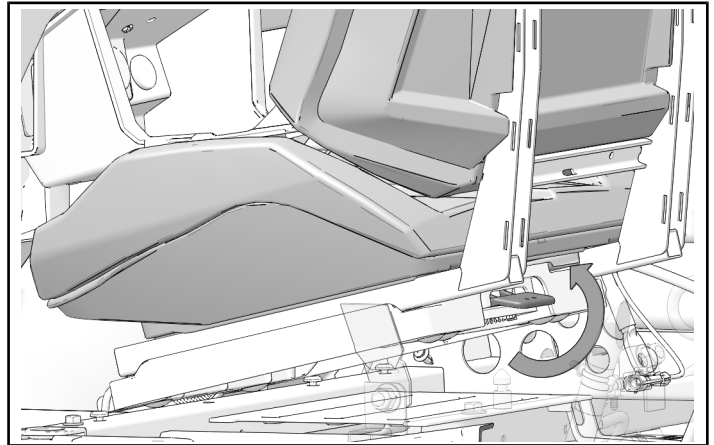
1. Push release lever forward and tilt steering wheel up.



2. Lift upward on front driver seat latch lever located on bottom backside of seat.

NOTICE

Driver's seat shown; passenger seat similar.



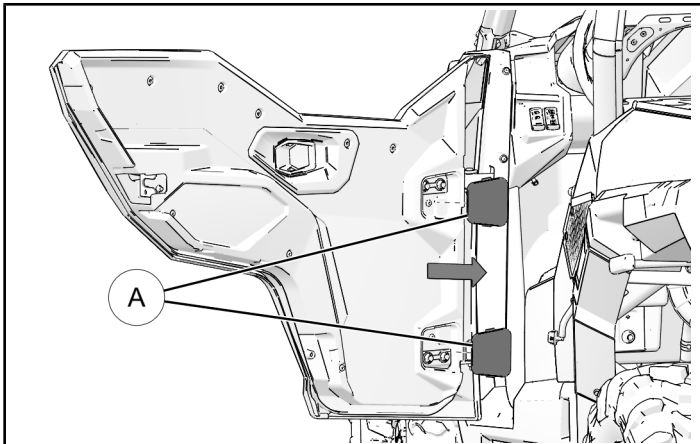
3. Lift up and forward on seat while lifting up on latch lever.
4. Remove seat from vehicle and set aside.
5. Repeat Step 2 through Step 4 for front passenger seat.

FRONT HALF DOOR REMOVAL

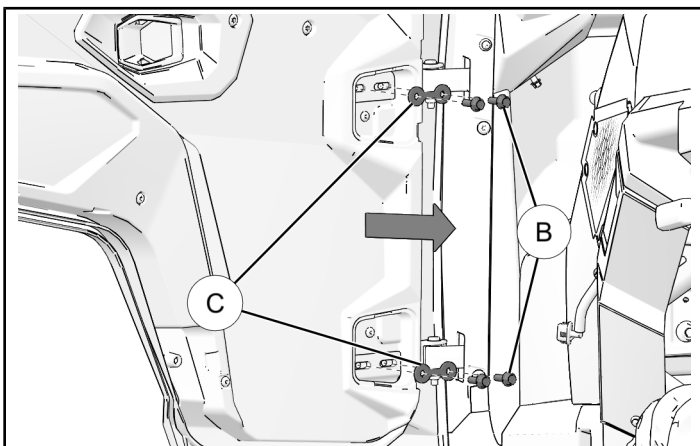
NOTICE

Left side door shown; right side door similar.

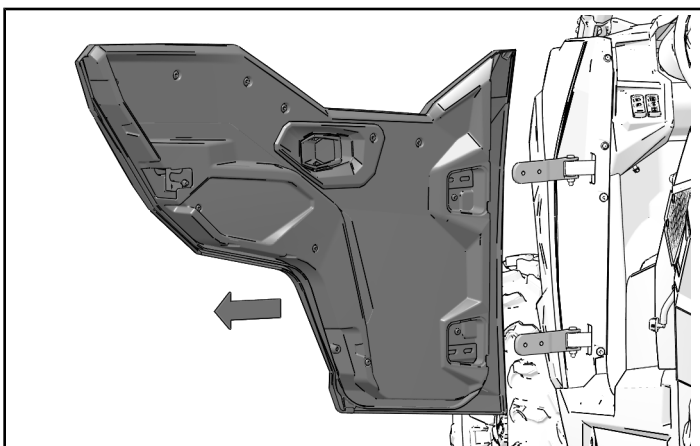
1. With driver's side door open, remove two hinge access covers (A) by carefully detaching upper and lower locking tabs from door panel. Covers will not be reused with new door.



2. Remove two screws (B) and double washer (C) from each door-side hinge. Retain screws and washers.

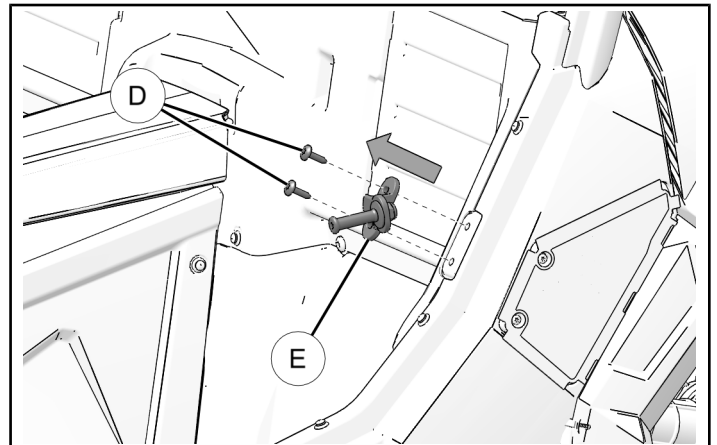


3. Slide door assembly off door-side hinges.



4. Remove two screws (D), then remove striker plate (E). Screws and striker plate will not be reused with new door.

NOTICE
Appearance of striker may vary



5. Repeat steps for passenger side door.

NOTICE
Retain hinge access covers (A), screws (D), and striker plate (E) for seasonal reinstallation of existing door.
Door-side hinge screws (B) and double washer (C) will be reused to install new door (1).

ACCESSORY INSTALLATION

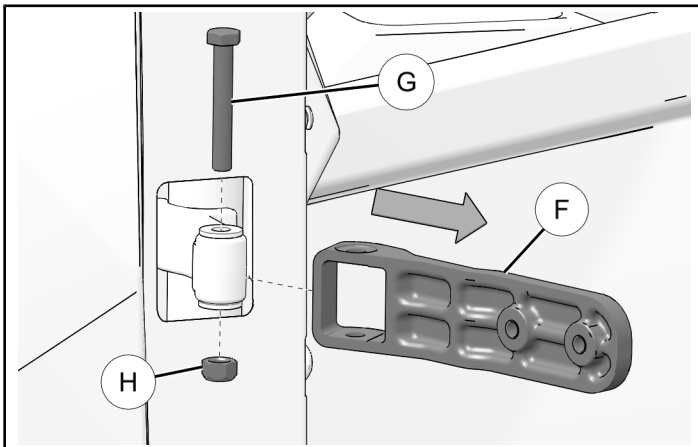
IMPORTANT
If installing both front and rear doors, perform the front door installation first.

REPLACE HINGE BUSHINGS

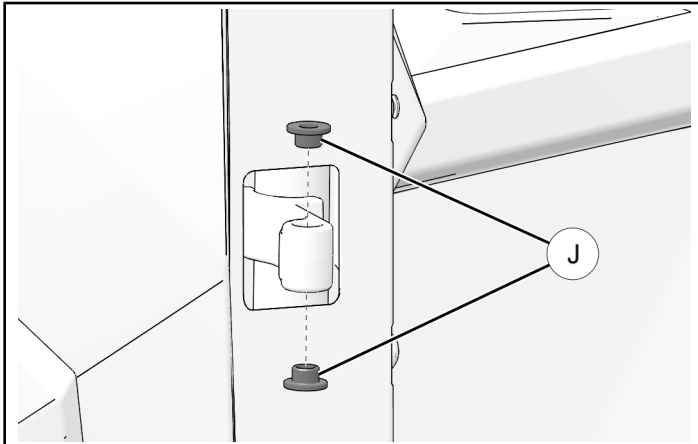
1. Remove bolt (G), nut (H), and door-side hinge (F). Repeat for remaining hinges (left and right doors). Retain bolts, nuts, and hinges.

NOTE

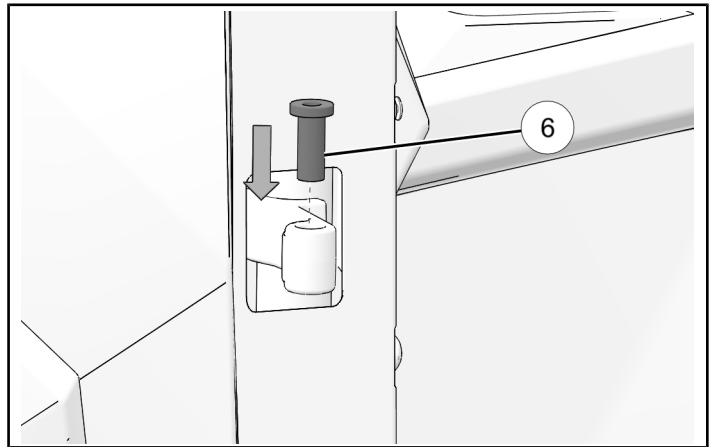
Left and right door-side hinges (F) are interchangeable.
Some vehicles use pin and clip instead of bolt and nut. Retain pins and clips.



2. Remove upper and lower hinge pin bushings (I) from all vehicle-side hinges. Bushings will not be reused.



3. Insert new bushing (6) from top down into all vehicle-side hinges.



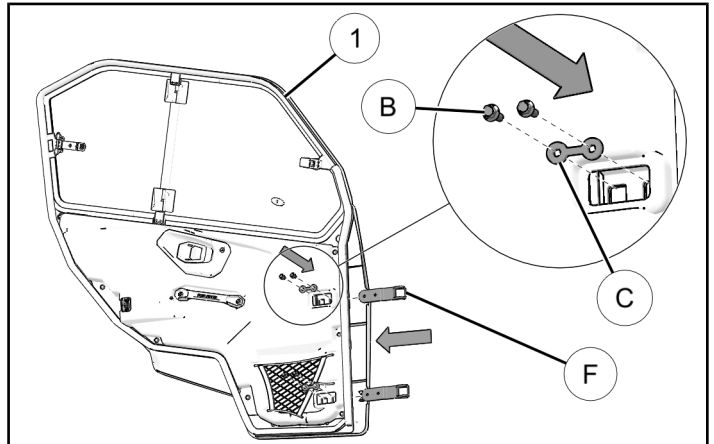
INSTALL NEW DOORS

1. Install retained door-side hinge (F) to new left side door (1) using two screws (B) and double washer (C). Repeat for lower hinge. Hand-tighten screws.

DO NOT torque fasteners at this time.

TIP

After installing screws, pull hinges (F) out as far as possible to provide clearance.



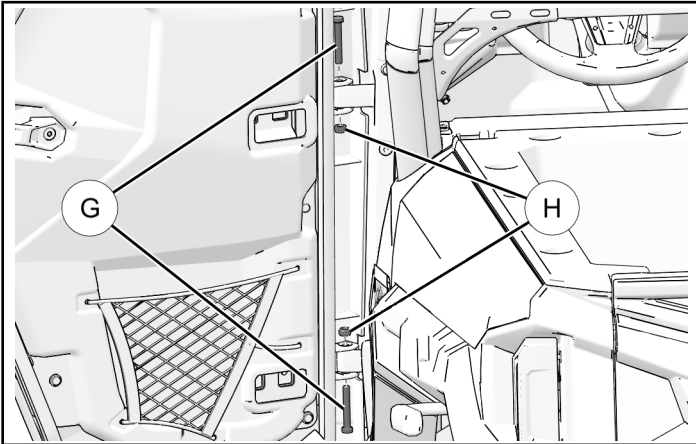
2. Position new door (1) so door-side hinge pin holes align with vehicle-side hinge pin holes.
Install retained upper hinge bolt (or pin) (G) from top down, then install lower hinge bolt (or pin) from bottom up.
 - If bolts (G) are used, secure each with retained lock nut (H), then torque to specification.
 - If pins are used, secure each with retained clip.

TORQUE

Nuts (H):
97 in-lbs (11 N·m)

TIP

Have one person hold and support door, and a second person to install screws.

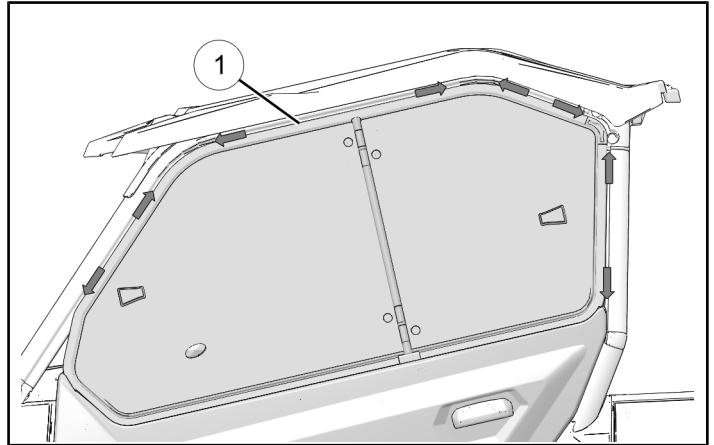


3. Push door inwards while attempting to center door in ROPS/chassis opening. Hold door in place, then observe gap between door window ① and ROPS/chassis (around entire perimeter of door).

Loosen hinge screws ② as needed. Adjust as required so door is centered, then tighten hinge screws ②.

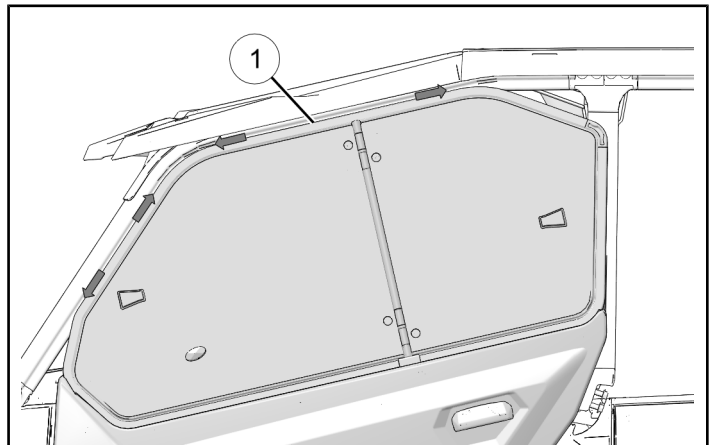
TIP

Gaps to check on 2-passenger vehicle



TIP

Gaps to check on multi-passenger vehicle



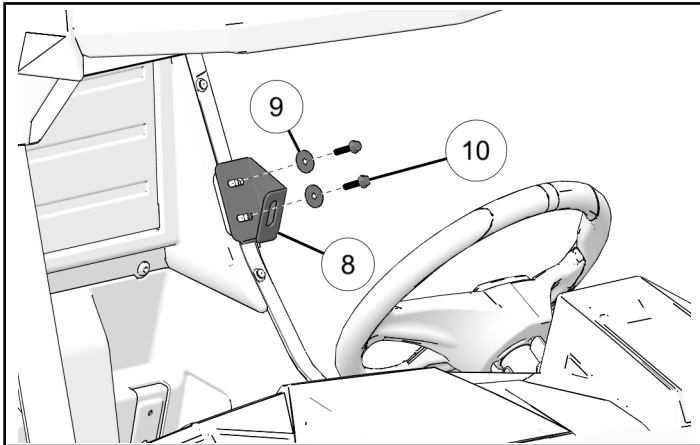
NOTICE

Seal compression will be adjusted in Step 6.

4. Install striker bracket ⑧ to vehicle using two screws ⑩ and washers ⑨. Position bracket in middle of adjustment slots. Do not fully tighten screws at this time.

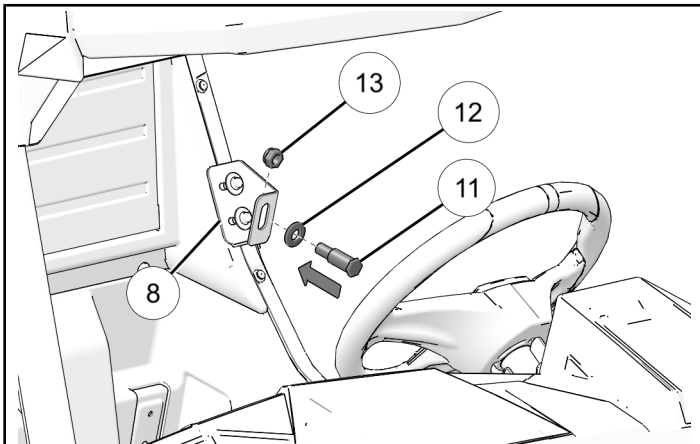
TIP

Slide striker bracket outboard in slots to provide room for socket. Install screws until almost seated, then slide bracket to middle of slots and continue tightening with wrench.



5. Install striker pin ⑪ and conical spring washer ⑫ to striker bracket ⑧ using nut ⑬. Make sure cupped side of washer is towards striker bracket. Position striker in middle of adjustment slot.

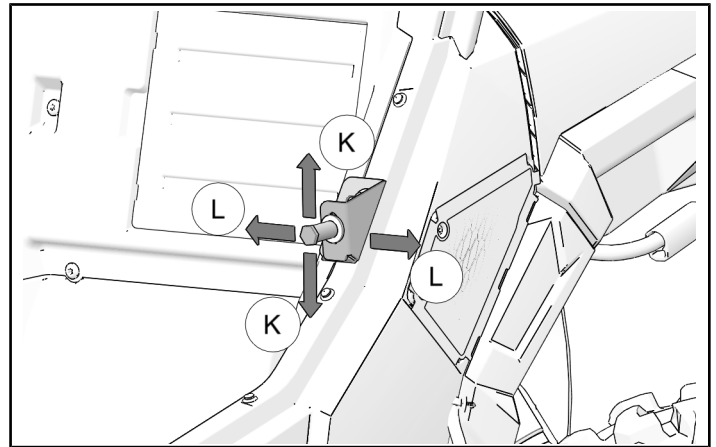
DO NOT torque fasteners at this time.



6. Open door latch (to properly position pawls), then slowly close door and observe engagement of striker pin ⑪ into door latch. Adjust striker pin and/or striker bracket ⑧ to achieve the following:
 - a. **HEIGHT** ①: Pin shank should be centered vertically in opening of latch frame. To adjust, loosen nut ⑬, move striker pin ⑪ up or down as required, then retighten nut.

- b. **DEPTH** ②: As required to achieve desired seal compression and door fairing. To adjust, loosen screws ⑩, move striker bracket ⑧ inboard or outboard as required, then retighten screws.

Make sure depth adjustment is made with latch pawls at FULL closure as shown (second "click"), not at partial closure (first "click").



7. Torque fasteners to specification.

TORQUE

Screws ⑩:
80 in-lbs (9 N·m)

TORQUE

Nut ⑬:
30 ft-lbs (41 N·m)

8. Torque door hinge screws ④ to specification.

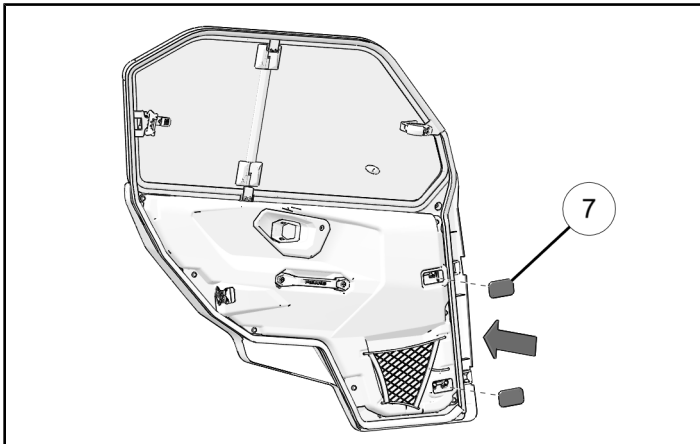
TORQUE

Screws ④:
27 ft-lbs (37 N·m)

9. Install two hinge access covers ⑦ to new door.

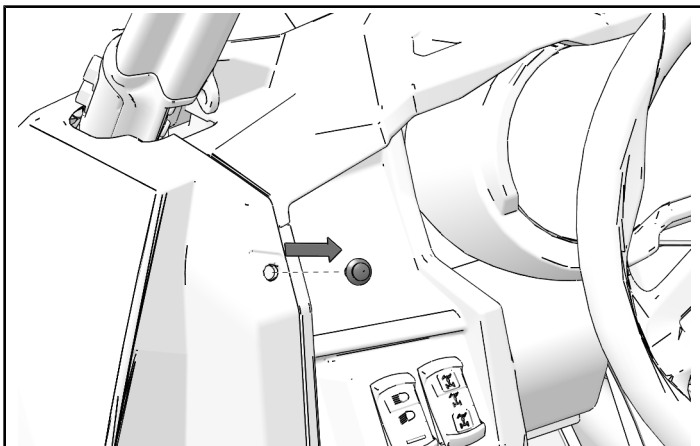
NOTICE

If also installing rear doors on multi-passenger vehicle, do not install hinge covers at this time. Install covers after both front and rear doors are installed and adjusted.

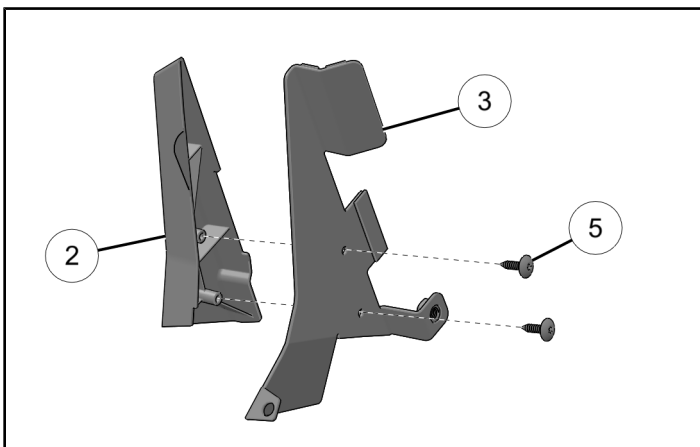


INSTALL A-PILLAR TRIM

1. Remove and retain upper push-pin rivet on driver's side.



2. Assemble outboard ② and inboard ③ A-pillar trim with two screws ⑤. Do not overtighten screws.

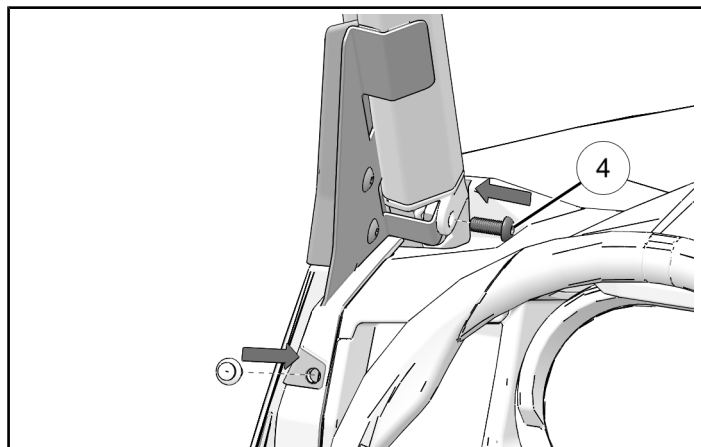


3. Install A-pillar trim with screw ④ and retained push-pin rivet.

NOTICE

If Poly Flip Down Windshield Kit (PN 2882174) or Tip-Out Glass Windshield (PN 2881108) is installed, then remove and discard M8 nut on outboard side of A-pillar mounting ear.

Reinstall windshield component (bracket or ball fitting, as applicable) AND inboard trim to ear using weld nut attached to trim.

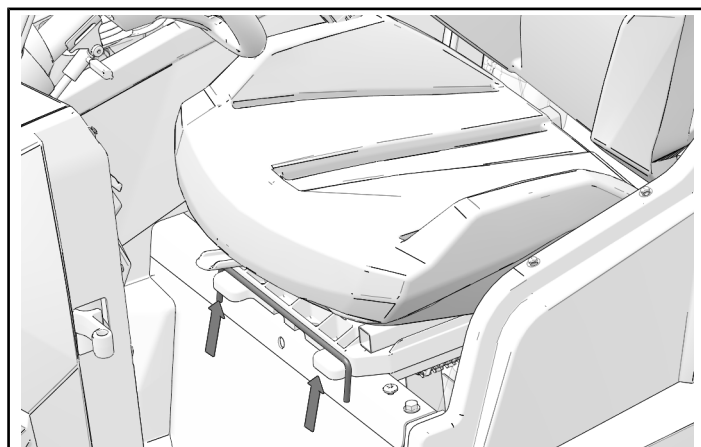


4. Repeat entire install procedure for right side door.

VEHICLE REASSEMBLY

FRONT SEAT INSTALLATION

1. Install front tabs of driver's seat base assembly into mounting bracket.



2. Press down on back of seat to latch seat into frame.
3. Lift up on seat to make sure it is fully installed.
4. Repeat steps for passenger seat.

FEEDBACK FORM

A feedback form has been created for the installer to provide any comments, questions or concerns about the installation instructions. The form is viewable on mobile devices by scanning the QR code or by clicking [HERE](#) if viewing on a PC.

