

SPARE TIRE MOUNT KIT



P/N 2883487

APPLICATION

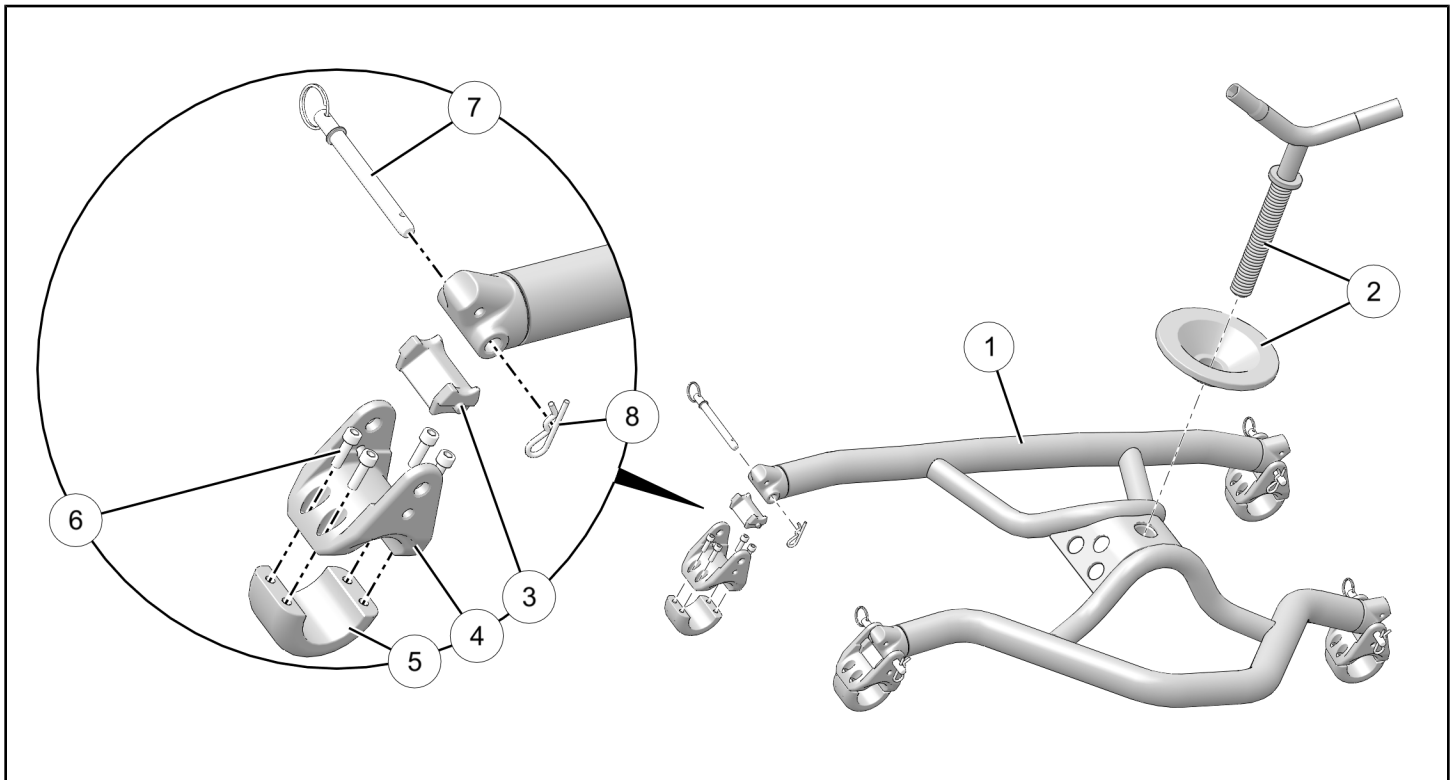
Verify accessory fitment at Polaris.com.

BEFORE YOU BEGIN

Read these instructions and check to be sure all parts and tools are accounted for. Please retain these installation instructions for future reference and parts ordering information.

KIT CONTENTS

This Kit includes:



| REF | QTY | PART DESCRIPTION | PART NUMBER |
|-----|-----|--|-------------|
| 1 | 1 | Frame, Spare Tire Mount | - |
| 2 | 1 | Handle Assembly (with poly wheel retainer) | 1024899 |
| 3 | 4 | Isolator, Rubber | 5417039 |
| 4* | 4 | Clamp, Upper | - |
| 5* | 4 | Clamp, Lower | - |
| 6* | 16 | Screw, Socket Cap - M6 X 1.0 X 20 | 7517305 |
| 7 | 4 | Pin, Hitch - 3 X 0.375 | 7662416 |
| 8 | 4 | Pin, Cotter | 7662417 |
| | 1 | Instructions | 9928781 |

Items marked (*) are included in Clamp Kit PN 2208216 (one upper clamp, one lower clamp, four screws).

TOOLS REQUIRED

- Safety Glasses
- Socket Set, Hex Bit, Metric
- Torque Wrench

IMPORTANT

Your Spare Tire Mount Kit is exclusively designed for your vehicle. Please read the installation instructions thoroughly before beginning. Installation is easier if the vehicle is clean and free of debris. For your safety, and to ensure a satisfactory installation, perform all installation steps correctly in the sequence shown.

INSTALLATION INSTRUCTIONS

⚠ WARNING

Follow all directions carefully. Failure to comply may allow airflow, vibration, or other factors to separate spare tire and/or tire mount from vehicle and cause an accident, resulting in serious personal injury or death.

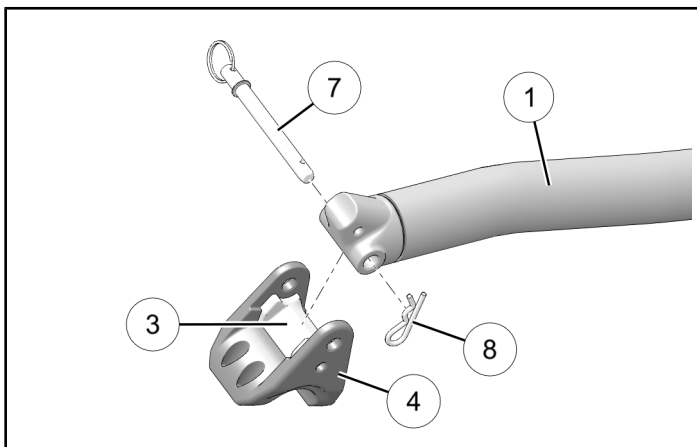
NOTE

Due to weight of components Polaris recommends two people install this kit and mount spare tire to frame.

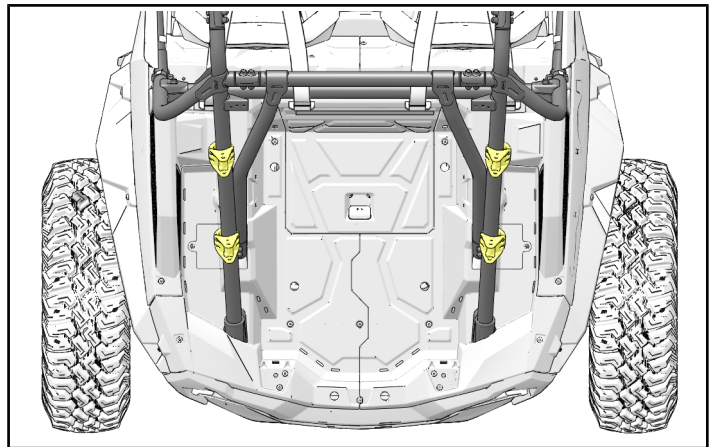
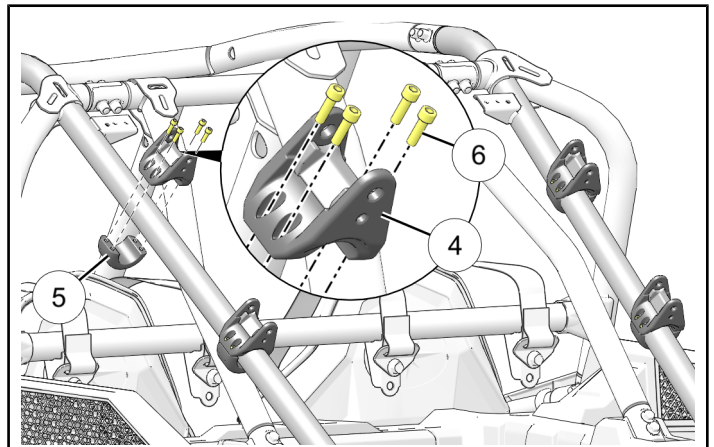
1. Shift vehicle transmission into "PARK". Turn ignition switch to "OFF" position and remove key.
2. Remove upper clamp ④ by removing cotter pin ⑧ and hitch pin ⑦ from all four corners of frame ①.

NOTE

Rubber isolator ③ can remain installed in upper clamp.
Pin retention wire not shown.



3. Loosely install upper clamp ④ and lower clamp ⑤ to OUTBOARD ROPS tubing using four screws ⑥. Repeat for remaining corners.

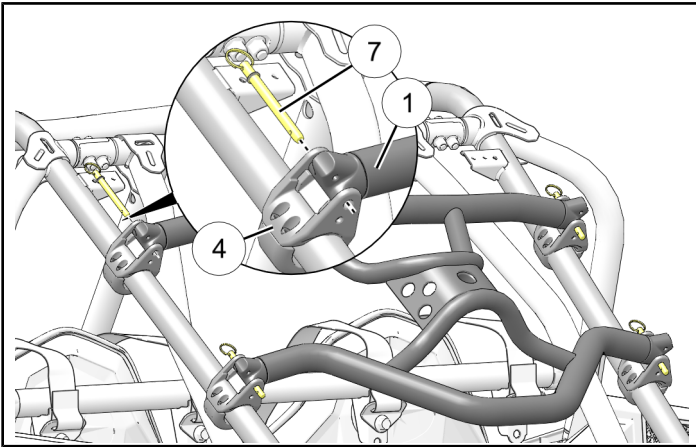


- Using two people, carefully lower frame ① into upper clamps ④, rotating and/or sliding clamps as required on ROPS tubing.

Secure each corner of frame to clamp using hitch pin ⑦ installed facing DOWNWARD and REARWARD. Do not install cotter pin ⑧ at this time.

NOTE

Upper LH corner detail shown; other corners similar.
Pin retention wires not shown.



- Torque all 16 screws ⑥ to specification, alternately removing pins and pivoting frame as required to access inboard screws. See Step 3 for detail.

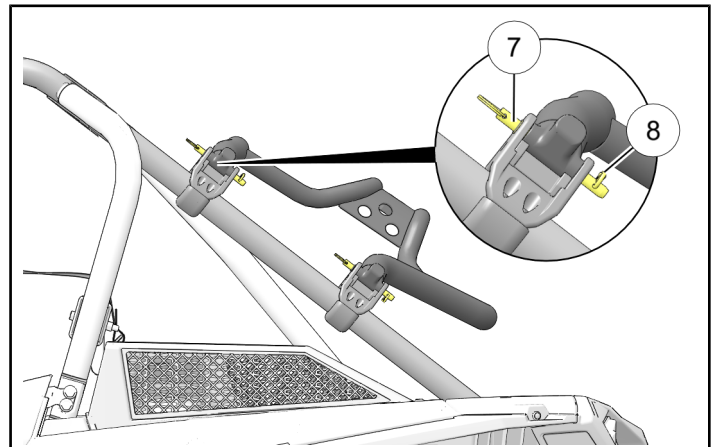
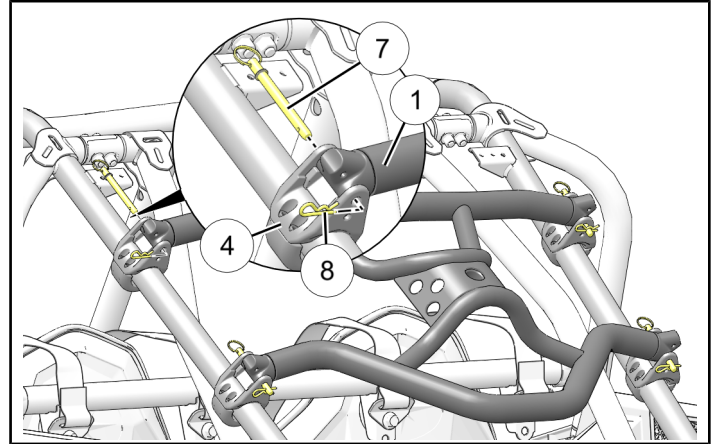
TORQUE

6 ft. lbs. (8 Nm) ± 10%

⚠ WARNING

All four hitch pins must be installed facing DOWNWARD and REARWARD as shown in next step, each secured by a cotter pin. Failure to comply may allow airflow, vibration, or other factors to separate frame from clamps and cause an accident, resulting in serious personal injury or death.

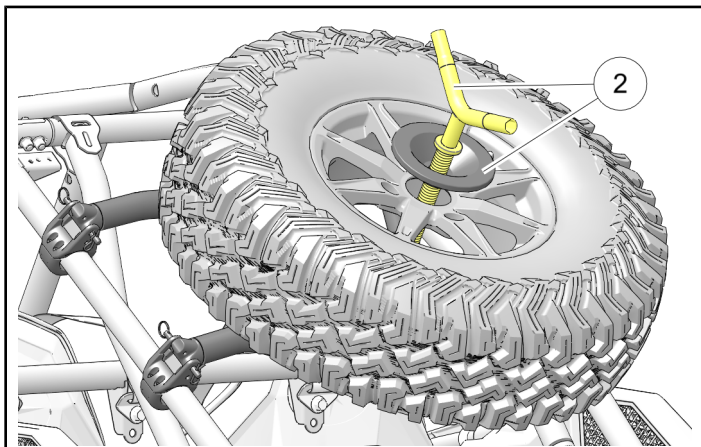
- Ensure all four hitch pins ⑦ are installed facing DOWNWARD and REARWARD, then secure each with cotter pin ⑧.



- Remove wheel center cap. Using two people, lift spare tire (sold separately) onto frame, then secure with poly wheel retainer and handle ②. Tighten handle firmly.

NOTE

Handle doubles as 17 and 19 mm lug nut wrench.



FEEDBACK FORM

A feedback form has been created for the installer to provide any comments, questions or concerns about the installation instructions. The form is viewable on mobile devices by scanning the QR code or by clicking [HERE](#) if viewing on a PC.

