

FRONT BUMPER KIT



P/N 2883132

APPLICATION

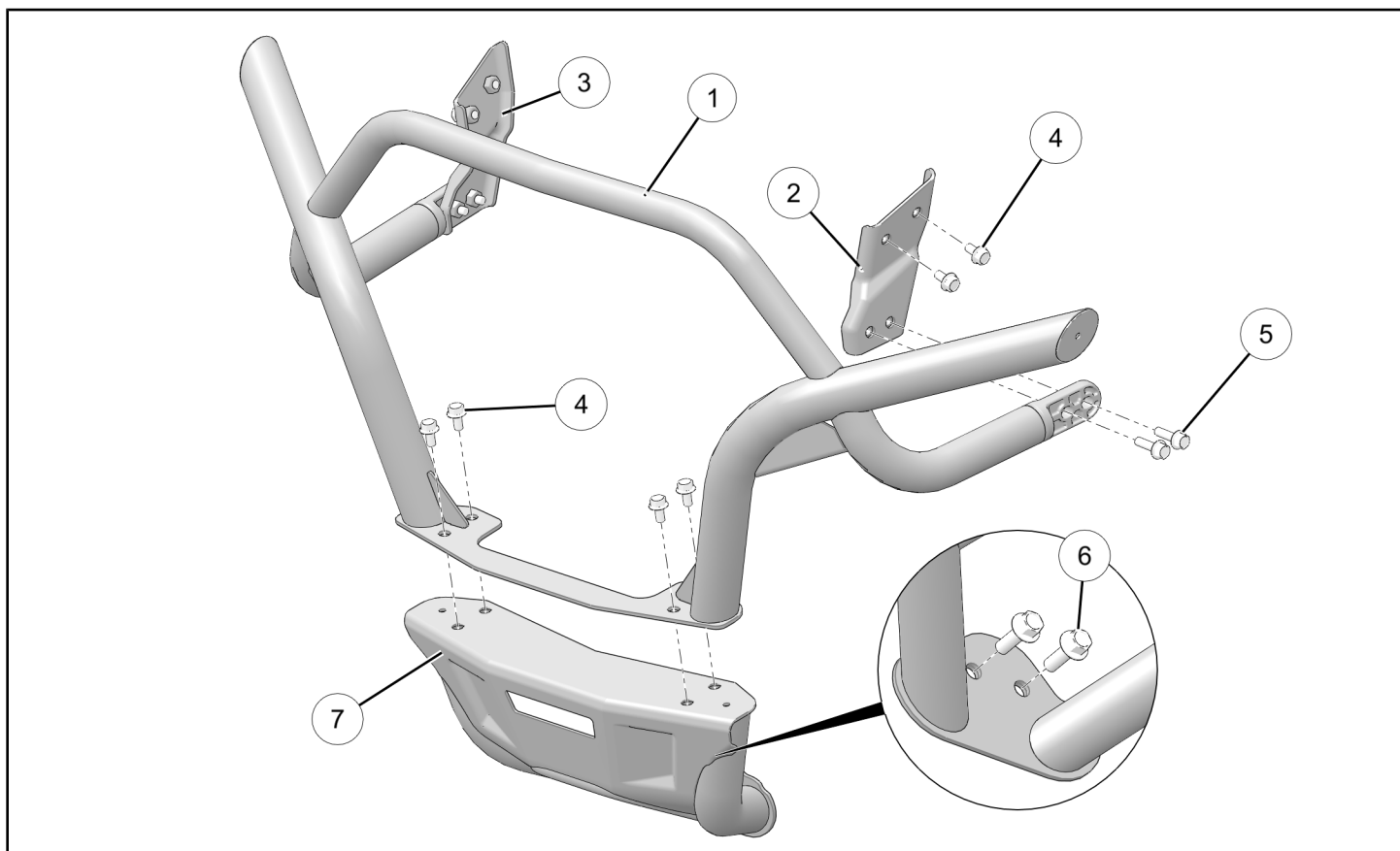
Verify accessory fitment at Polaris.com.

BEFORE YOU BEGIN

Read these instructions and check to be sure all parts and tools are accounted for. Please retain these installation instructions for future reference and parts ordering information.

KIT CONTENTS

This Kit includes:



REF	QTY	PART DESCRIPTION	PART NUMBER
1	1	Bumper, Upper	-
2	1	Bracket, Mounting, LH	-
3	1	Bracket, Mounting, RH	-
4	8	Screw, Hex Flange - M8 X 1.25 X 16	7519005
5	4	Screw, Hex Flange - M8 X 1.25 X 30	7518884
6	2	Screw, Hex Flange - M10 X 1.5 X 30	7519803
7	1	Bumper, Lower	-
	1	Instructions	9928680

TOOLS REQUIRED

- Safety Glasses
- Deburring Tool
- Drill
- Flexible Magnetic Pickup Tool

- Hole Saw: 1–3/4 inch (45 mm)
- Screwdriver Set, Torx®
- Socket Set, Metric
- Torque Wrench

IMPORTANT

Your Front Bumper Kit is exclusively designed for your vehicle. Please read the installation instructions thoroughly before beginning. Installation is easier if the vehicle is clean and free of debris. For your safety, and to ensure a satisfactory installation, perform all installation steps correctly in the sequence shown.

ASSEMBLY TIME

Approximately 40 minutes

INSTALLATION INSTRUCTIONS

NOTE

Polaris recommends two people assemble and install this kit.

1. Shift vehicle transmission into “PARK”. Turn ignition switch to “OFF” position and remove key.
2. Prepare side panels for bumper tubing.

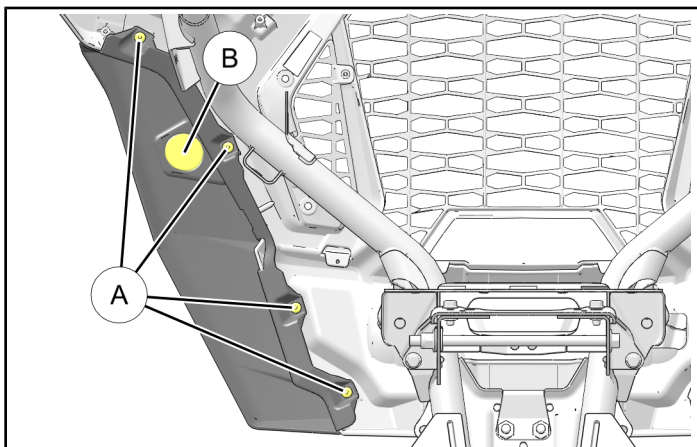
IMPORTANT

Side panels are **REQUIRED** for adequate cooling air flow and **MUST** be installed for proper engine operation.

- a. Remove four screws ① from LH side panel, then remove panel. Retain screws.

NOTE

View looking forward from left front wheel well. All components except chassis and body structure hidden for clarity.



- b. Locate center of circular area ②, then drill 1/8 inch (3 mm) pilot hole forward through panel from BACK to FRONT.

- c. Use 1–3/4 inch (45 mm) hole saw to cut hole through panel rearward from FRONT to BACK. Debur hole as required.

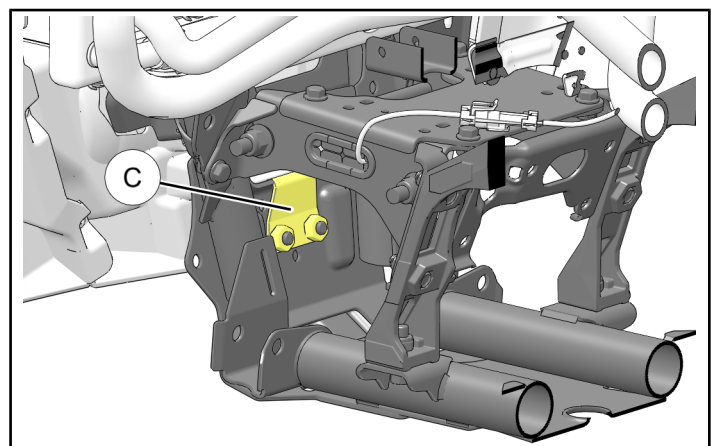
NOTE

Flange on inboard side of panel prevents cutting hole directly from rear.

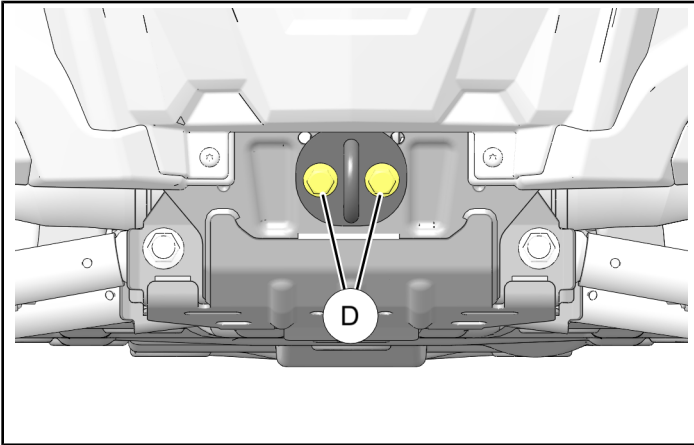
- d. Reinstall side panel using four retained screws ①.
 - e. Repeat Steps a-d for RH side of vehicle.
3. Install lower bumper.

IMPORTANT

Front tow hook is retained by backer plate ③ that loosely hangs from chassis structure. If backer plate is inadvertently lifted or pushed rearward during removal of tow hook, or during installation of lower bumper ⑦, plate may fall beneath front differential. Retrieval and reinstallation is difficult, but can be aided by using a flexible magnetic pickup tool. Polaris recommends taping backer plate to chassis structure on both LH and RH sides **PRIOR** to removing tow hook.



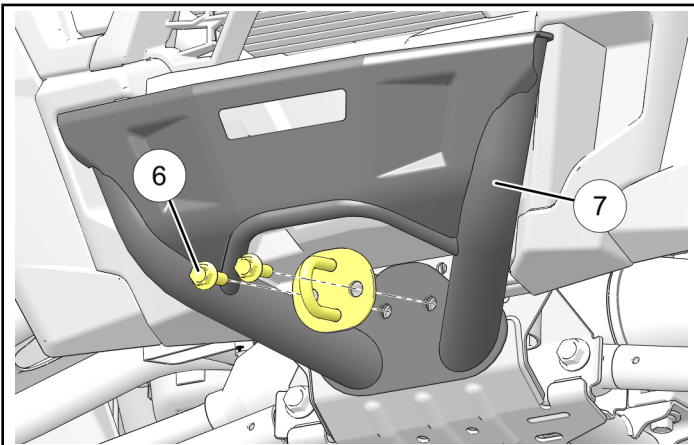
- a. Remove tow hook by removing two screws ①. Retain hook. Screws will not be reused.



- b. Have one person hold lower bumper ⑦ in position while second person installs bumper and retained tow hook to chassis using two NEW (longer) screws ⑥.

TIP

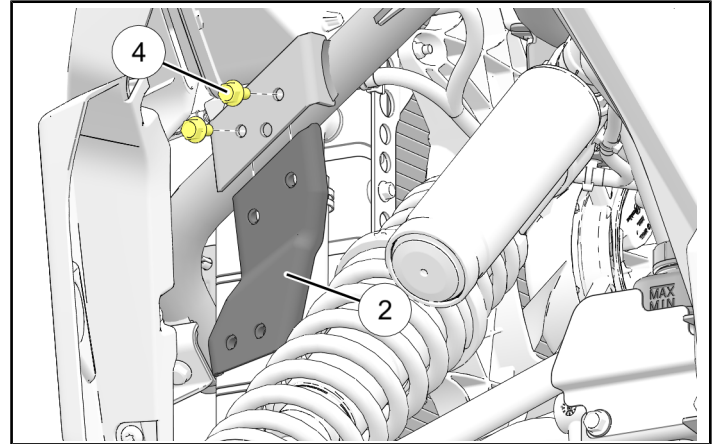
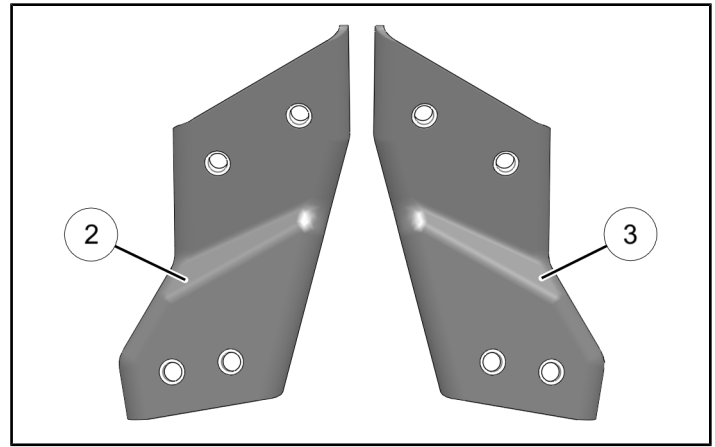
Use one hand to hold backer plate in place, and second hand to carefully start and FULLY INSTALL one screw. Minimize rearward force on screw. If first screw is not fully installed then rearward force may dislodge plate during installation of second screw.



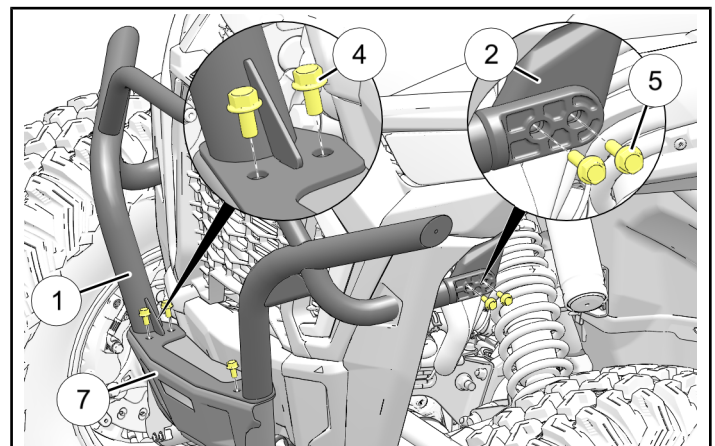
4. Install upper bumper.

- a. From within left front wheel well, loosely install LH mounting bracket ② to chassis using two screws ④. Ensure lower end of bracket angles FORWARD.

Repeat on right side of vehicle using RH mounting bracket ③.



- b. Loosely install upper bumper ① to mounting brackets ② and ③ using two screws ⑤ on each side.



- c. Install upper bumper ① to lower bumper ⑦ using four screws ④.
d. Torque all screws to specification.

TORQUE

M8 screws ④ and ⑤: 16 ± 2 ft. lbs. (22 ± 2 Nm)
M10 screws ⑥: 40 ± 4 ft. lbs. (54 ± 5 Nm)

FEEDBACK FORM

A feedback form has been created for the installer to provide any comments, questions or concerns about the installation instructions. The form is viewable on mobile devices by scanning the QR code or by clicking [HERE](#) if viewing on a PC.

FEEDBACK FORM

