

PREMIUM CREW DOOR KIT



P/N 2883082; 2889810

BEFORE YOU BEGIN

Read these instructions and check to be sure all parts and tools are accounted for. Please retain these installation instructions for future reference and parts ordering information.

APPLICATION

Verify accessory fitment at [Polaris.com](https://www.polaris.com).

INSTALLATION VIDEO

A video of the installation is viewable on mobile devices by scanning the QR code or by clicking [HERE](#) if viewing on a PC.

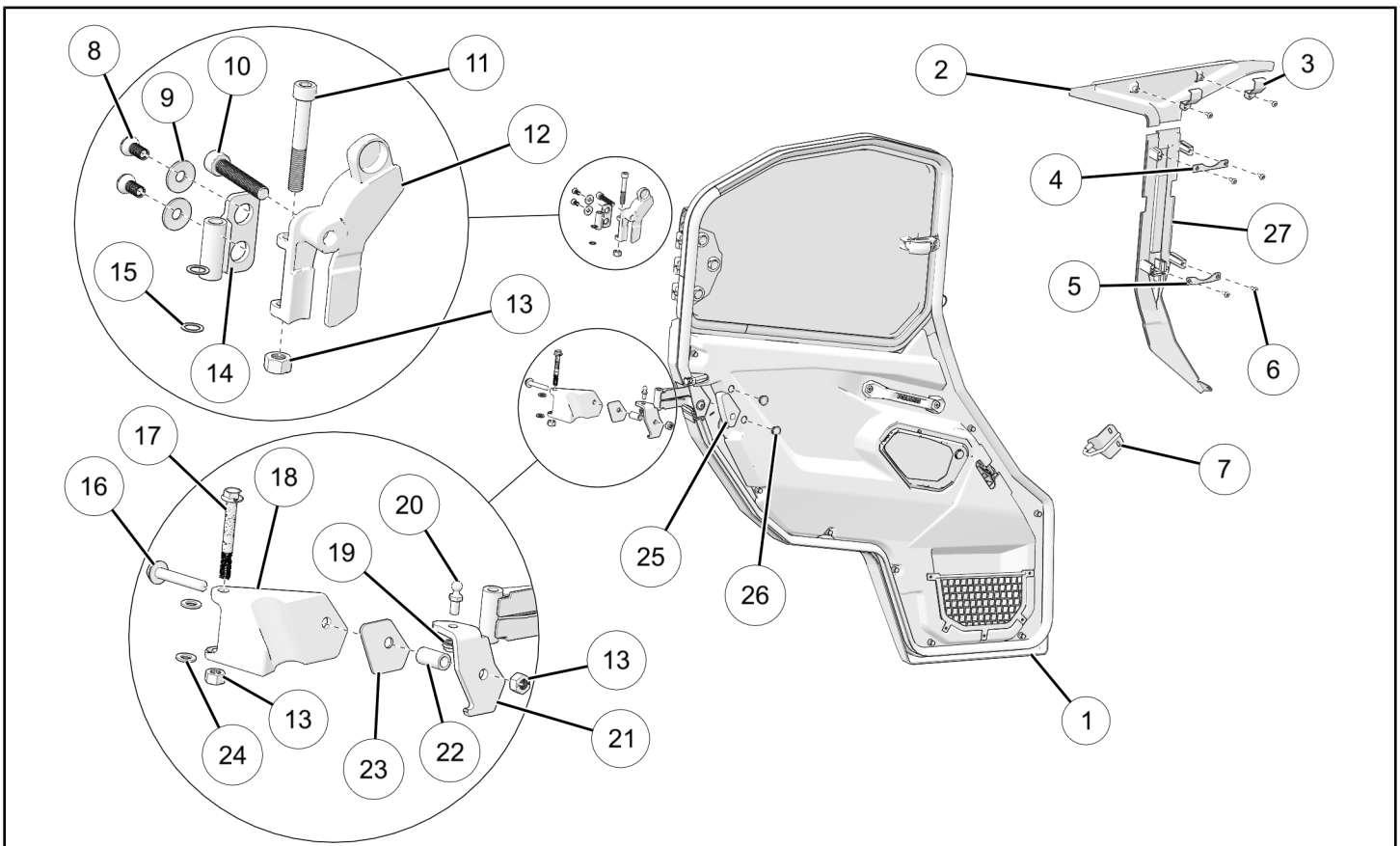


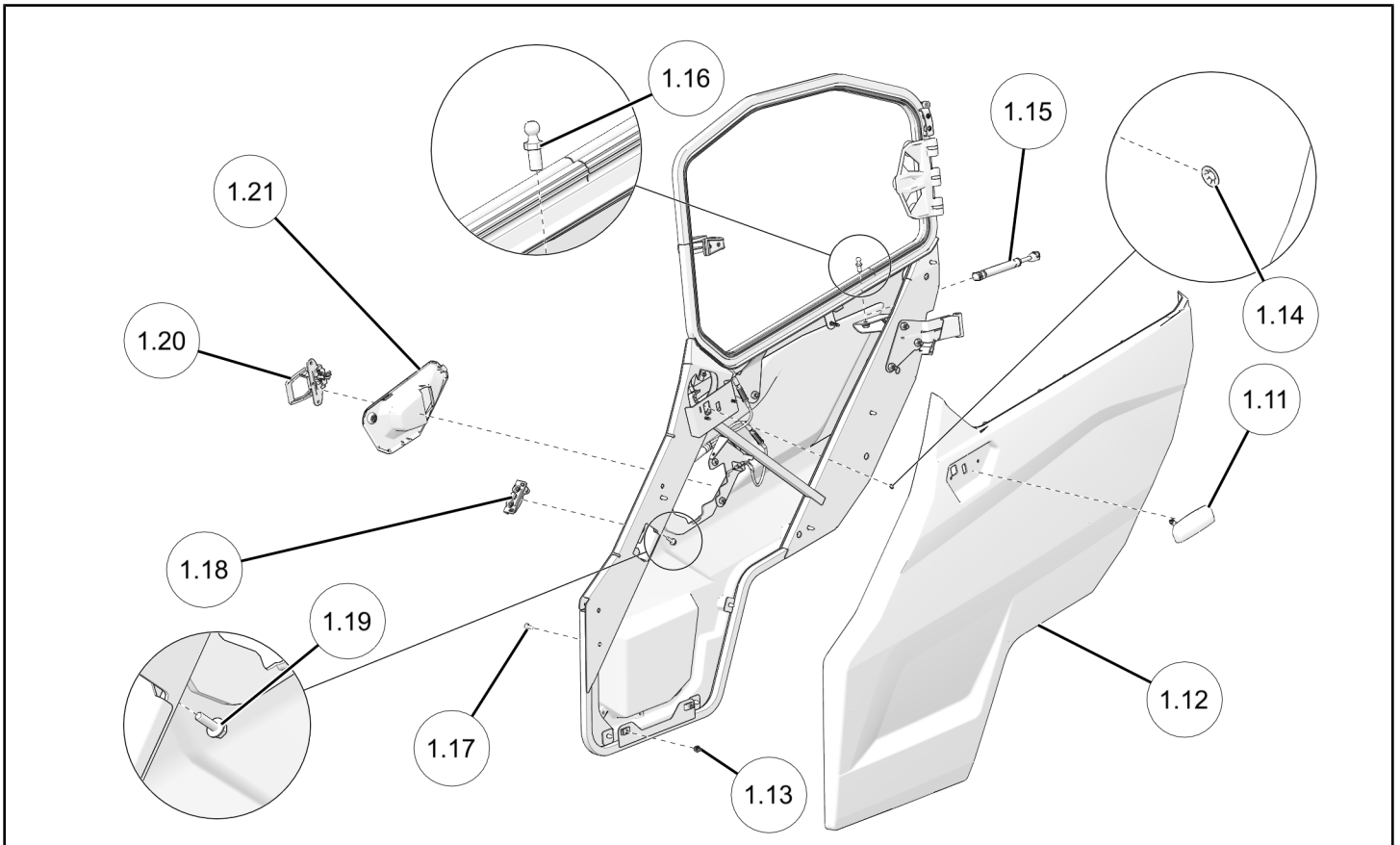
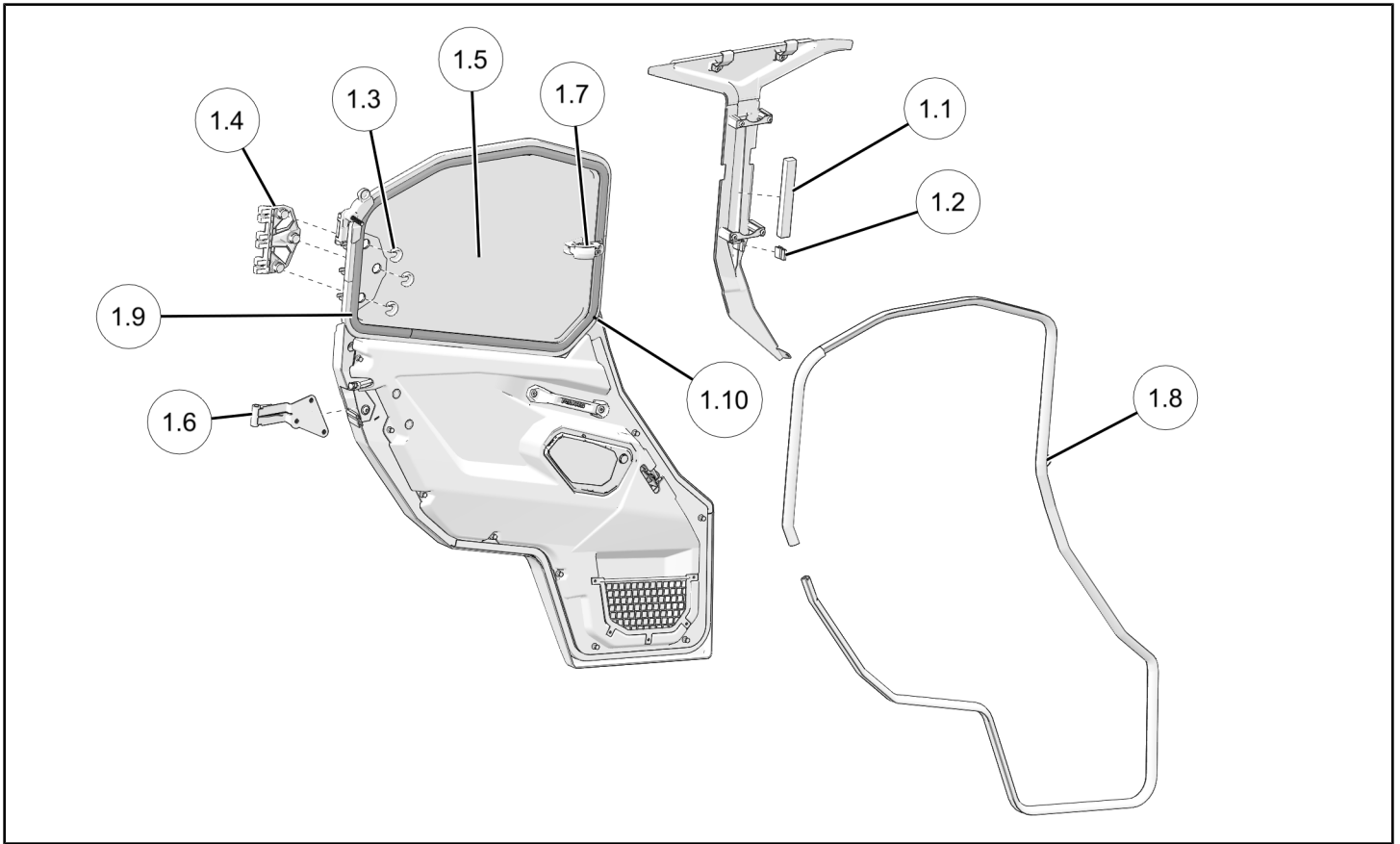
REQUIRED SOLD SEPARATELY

Only parts for installation of the Premium Crew Door Kit are included. For complete installation, the following additional kit is required (sold separately):

- Premium Door Kit, P/N 2889809

KIT CONTENTS





| REF | QTY | PART DESCRIPTION | PART NUMBER | INCLUDED IN SERVICE KIT |
|------|--------|---|------------------------|-------------------------|
| 1 | 1 1 | Door Assembly (includes items 1.1–1.21) Left Right (not shown) | n/a n/a | n/a n/a |
| 1.1 | 1 | - Trim Strip | n/a | 2209942 2209943 |
| 1.2 | 1 | - Trim, Top Bulb, Double C-Clip | n/a | 2209942 2209943 |
| 1.3 | 3 | - Clip, Snap | n/a | 2207992 |
| 1.4 | 1 | - Hinge, Window | n/a | 2207992 |
| 1.5 | 1 | - Glass, Left - Glass, Right (not shown) | n/a n/a | 2207993 2207994 |
| 1.6 | 3 | - Hinge, Door Side, Lower, Left - Hinge, Door Side, Lower, Right (not shown) | n/a n/a | 2207995* |
| 1.7 | 3 | - Latch, Window (with hardware) | n/a | 2207997 |
| 1.8 | 1 | - Seal, Door, Perimeter, Left - Seal, Door, Perimeter, Right (not shown) | n/a n/a | 2209940 2209941 |
| 1.9 | 1 | - Seal, Glass, Perimeter, Left - Seal, Glass, Perimeter, Right (not shown) | n/a n/a | 2209940 2209941 |
| 1.10 | 1 | - Seal, Lower Window Frame, Left - Seal, Lower Window Frame, Right (not shown) | n/a n/a | 2209940 2209941 |
| 1.11 | 1 1 | - Handle, Outer, Left - Handle, Outer, Right (not shown) | 7082354** 7082353** | 2208003* |
| 1.12 | 1 1 | - Door Panel, Outer, Left - Door Panel, Outer, Right (not shown) | 5465682 5465629 | 2211773 2211774 |
| 1.13 | 3 | - U-Clip, Speed Nut | 7081305 | n/a |
| 1.14 | 1 | - Cable Retainer | 7710921 | n/a |
| 1.15 | 1 | - Gas Spring | 7044799 | 2208000* |
| 1.16 | 1 | - Fitting, Ball | 7082301 | n/a |
| 1.17 | 5 | - Screw, Torx® Truss Head, Hi/Lo #14 x 3/4 | 7519045 | n/a |
| 1.18 | 1 | - Latch, 2 Stage, Left - Latch, 2 Stage, Right (not shown) | 7082459 7082460 | n/a |
| 1.19 | 2 | - Screw, Hex Flange M6 x 1.0 x 20 mm | 7518613 | n/a |
| 1.20 | 1 | - Door Handle, Inner | 7082216 | 2208002 |
| 1.21 | 1 | - Door Trim, Inner, Left - Door Trim, Inner, Right (not shown) | 5452290 5452291 | n/a |
| 2 | 1 1 | Trim, B-Pillar, Upper Left Trim, B-Pillar, Upper Right (not shown) | 5455746 5455748 | 2209942 2209943 |
| 3 | 4 | Bracket, B-Pillar Upper Trim | n/a | 2209942 2209943 |
| 4 | 2 | Bracket, B-Pillar Lower Trim | n/a | 2209942 2209943 |

| REF | QTY | PART DESCRIPTION | PART NUMBER | INCLUDED IN SERVICE KIT |
|-----|--------|---|--------------------|-------------------------|
| 5 | 2 | Bracket, B-Pillar Lower Trim | n/a | 2209942 2209943 |
| 6 | 12 | Screw, Torx® Truss Head, Hi/Lo #14 x 3/4 | 7519045 | 2209942 2209943 |
| 7 | 2 | Striker | n/a | n/a |
| 8 | 4 | Screw, Hex Socket Button Head M8 x 16 mm | n/a | 2207995* |
| 9 | 10 | Washer, Conical Spring M8 mm | n/a | 2207995* |
| 10 | 2 | Screw, Hex Socket M10 x 1.5 x 55 mm | 7518146 | 2207996* |
| 11 | 2 | Screw, Hex Socket M10 x 1.5 x 70 mm | 7518099 | 2207996* |
| 12 | 1 1 | Hinge, Chassis-Side, Upper Left Hinge, Chassis-Side, Upper Right (not shown) | n/a n/a | 2207996* |
| 13 | 6 | Nut, Hex M10 mm | 7547039 | 2207996* |
| 14 | 1 1 | Hinge, Door-Side, Upper Left Hinge, Door-Side, Upper Right (not shown) | n/a n/a | 2207995* |
| 15 | 4 | Washer, Nylon M10 mm | n/a | 2207996* |
| 16 | 2 | Screw, Hex Flange Head M10 x 1.5 x 65 mm | 7519903 | 2207996* |
| 17 | 2 | Screw, Hex Flange Head M10 x 1.5 x 80 mm | 7517482 | 2207996* |
| 18 | 1 1 | Hinge, Chassis-Side, Lower Left Hinge, Chassis-Side, Lower Right (not shown) | n/a n/a | 2207996* |
| 19 | 2 | Nut, Hex Flange, Locking, Serrated M8 mm | n/a | 2208000* |
| 20 | 2 | Fitting, Ball | 7082301 | 2208000* |
| 21 | 1 1 | Bracket, Strut, Left Bracket, Strut, Right (not shown) | n/a n/a | 2208000* |
| 22 | 2 | Spacer, Cylindrical | n/a | 2207996 |
| 23 | 2 | Spacer, Flat | n/a | n/a |
| 24 | 4 | Washer, Nylon 10.25 x 19.00 x 2.0 mm | 5439712 | 2207996* |
| 25 | 1 1 | Seal, Foam, Left Seal, Foam, Right (not shown) | n/a n/a | 2209940 2209941 |
| 26 | 4 | Plug 0.75 | n/a | n/a |
| 27 | 1 1 | Trim, B-Pillar, Lower Left Trim, B-Pillar, Lower Right (not shown) | 5455747 5455749 | 2209942 2209943 |

* Service kit contains parts and hardware required for BOTH sides of vehicle.

** Use handle PNs as shown in this table for the side indicated. Handles have LH/RH markings indicating the **opposite** side since handles were originally designed for the opposite side in other applications.

TOOLS REQUIRED

- Safety Glasses
- Pliers, Push Pin Rivet
- Push Dart (Panel Clip) Tool
- Screwdriver Set, Torx®
- Socket Set, Hex Bit, Metric
- Socket Set, Metric

- Socket Set, Torx® Bit

- Torque Wrench
- Wrench Set, Metric

CONSUMABLES REQUIRED

- Gloves, Chemical Resistant
- Grease, Polaris All Season (or equivalent)

IMPORTANT

Your Premium Crew Door Kit is exclusively designed for your vehicle. Please read the installation instructions thoroughly before beginning. Installation is easier if the vehicle is clean and free of debris. For your safety, and to ensure a satisfactory installation, perform all installation steps correctly in the sequence shown.

INSTALLATION INSTRUCTIONS

VEHICLE PREPARATION

GENERAL

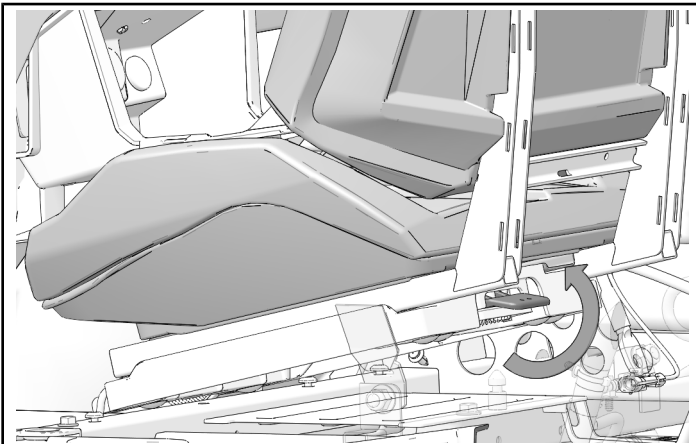
1. Park vehicle on a flat surface.
2. Shift vehicle into PARK.
3. Turn key to OFF position and remove key.

REAR SEAT REMOVAL

1. Lift upward on left side seat latch lever located on bottom backside of seat.

NOTICE

Left side seat shown; right side seat similar



2. Lift up and forward on seat while lifting up on latch lever.
3. Remove seat from vehicle and set aside.
4. Repeat steps for right side seat.

REAR HALF DOOR AND BOLSTER REMOVAL

NOTICE

Polaris recommends two people perform this section.

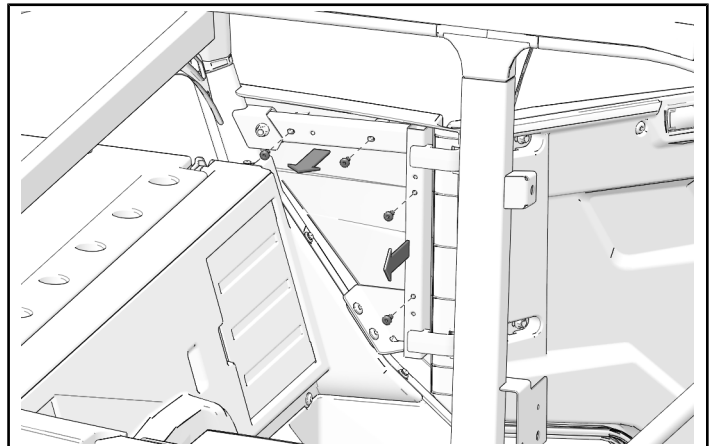
NOTICE

Retain all parts for seasonal reinstallation.

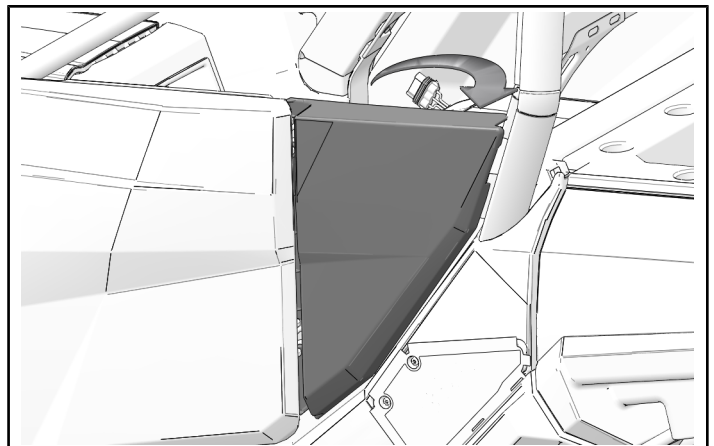
NOTICE

Left side shown; right side similar

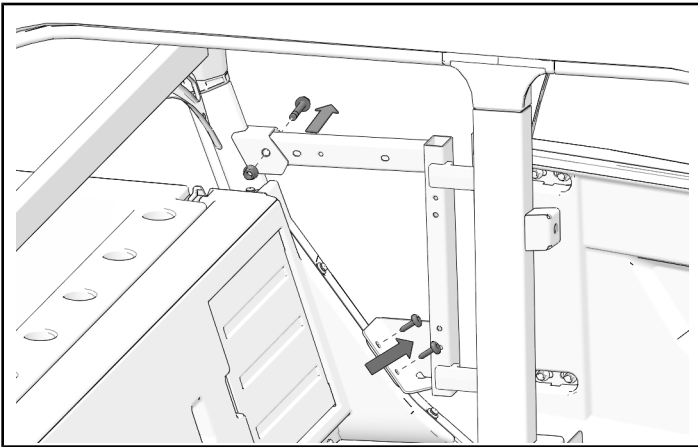
1. Remove four screws from inside of bolster panel.



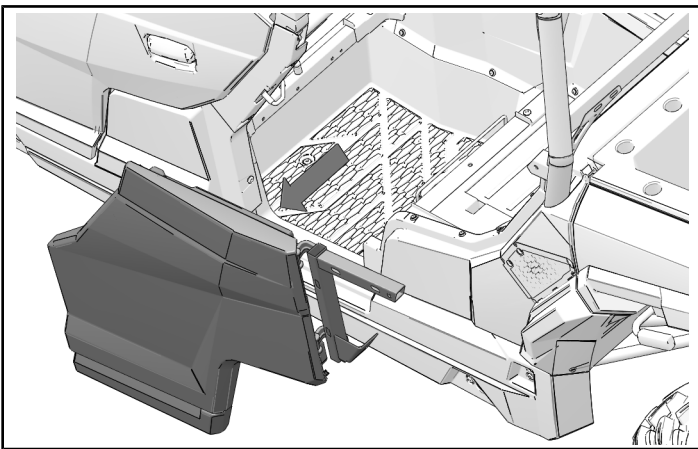
2. Rotate rear of bolster panel outward and remove bolster panel.



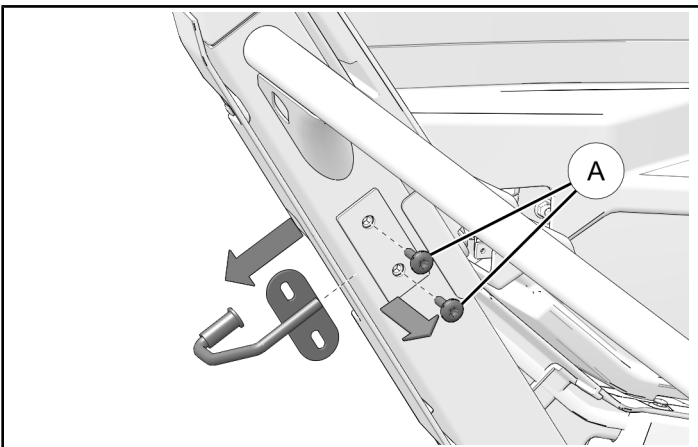
3. Remove three screws and nut from bolster panel frame.



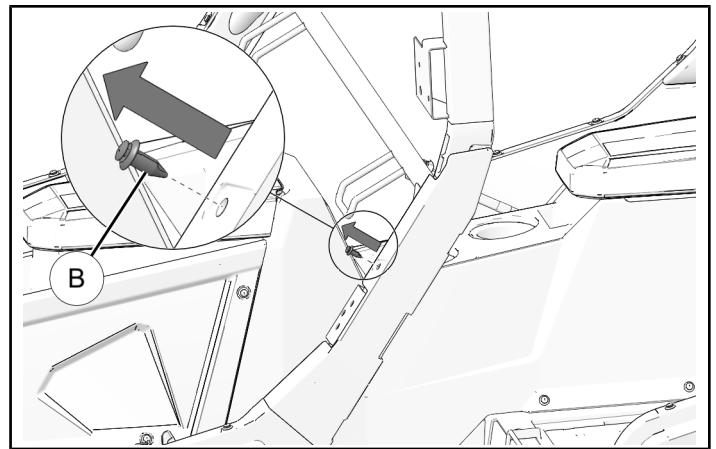
4. Remove bolster panel frame and rear door.



5. Remove two screws and striker.



6. Remove push pin rivet (A).



7. Repeats steps for right side.

ACCESSORY INSTALLATION

IMPORTANT

If installing both front and rear doors, perform the front door installation first.

INSTALL REAR DOORS

NOTICE

Polaris recommends two people install perform this section.

NOTICE

Left side shown; right side similar.

1. Remove lower rear screw (C) and nut (E) from top of ROPS C-pillar fitting.

IMPORTANT

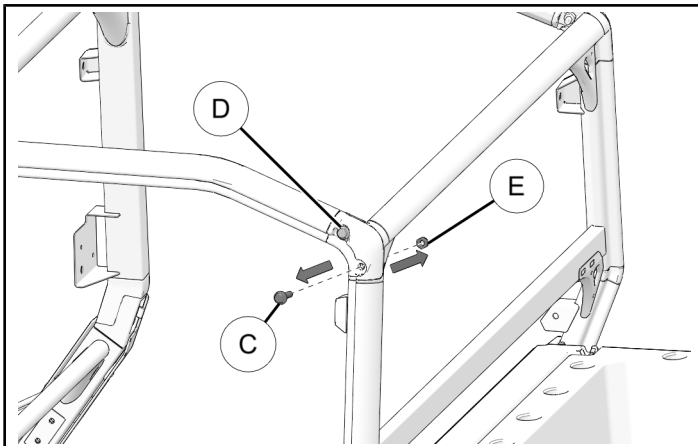
Do NOT loosen or remove upper forward screw (D).

NOTICE

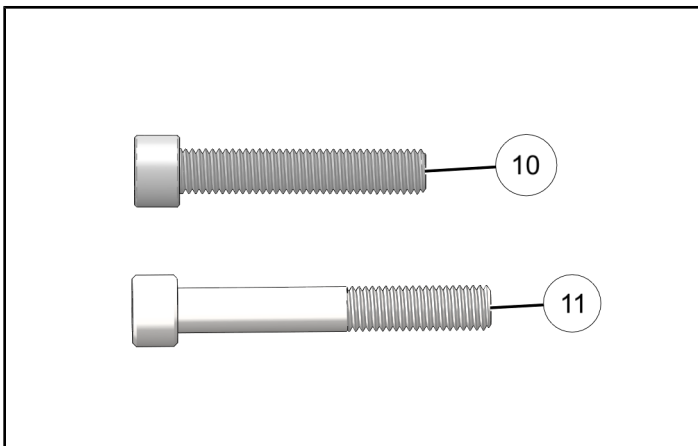
If needed, push up on roof to create clearance for screw (C).

NOTICE

Keep and reuse nut (E) for screw (10).



2. Identify 55 mm long cap screw (10). Notice differences from 70 mm long cap screw (11).



WARNING

Failure to torque fasteners as directed in next step will adversely affect ROPS integrity and may lead to severe injury or death in an accident.

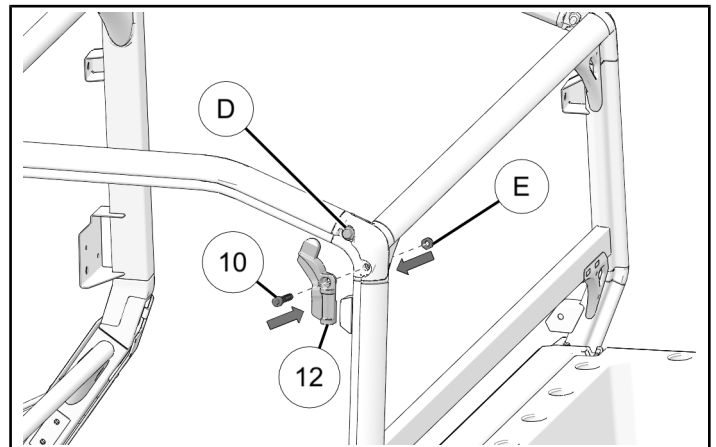
3. Install upper left chassis-side hinge (12) to ROPS C-pillar fitting using 55 mm long cap screw (10) and nut (E). Torque to specification.

TORQUE

Nut (E):
40 ft-lbs (54 N·m)

NOTE

Hinge uses existing screw (D) for alignment only. Hinge is not secured by screw.



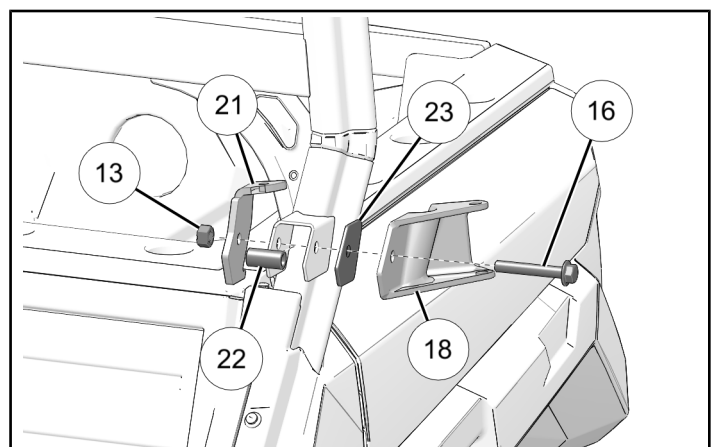
4. Install lower left chassis-side hinge (18) and left strut bracket (21) to ROPS mounting bracket using **65 mm** hex flange bolt (16), spacer (22), and nut (13). Torque to specification.

IMPORTANT

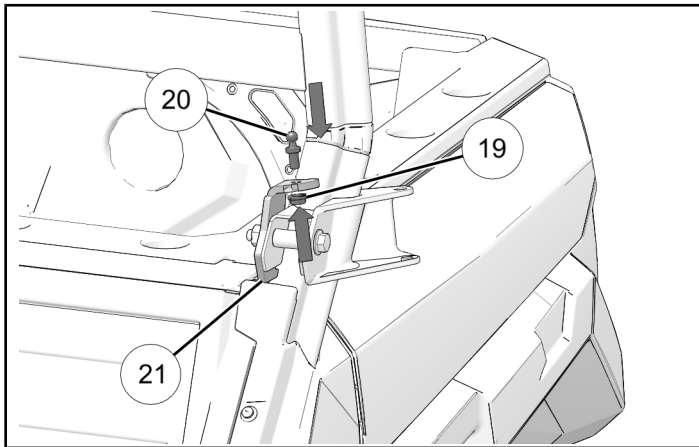
If weldment prevents hinge from lying flat against ROPS mounting bracket, then install spacer (22) between hinge and bracket. Spacer is **ONLY** needed to accommodate weldment interference.

TORQUE

Nut (13):
40 ft-lbs (54 N·m)



5. Install ball fitting ⑳ to left strut bracket ㉑ using nut ㉒. Tighten nut.



- **UPPER:** Hex socket cap screw ⑪, two thinner and smaller nylon washers ⑮ (inserted between chassis and door-side hinges), and nut ⑬
- **LOWER:** Hex flange bolt ⑰, two larger and thicker nylon washers ㉔ (inserted between chassis and door-side hinges), and nut ⑬

Torque both hinge nuts to specification.

TORQUE

Nuts ⑬:
97 in-lbs (11 N·m)

NOTICE

Have a second person support door while hinge bolts, washers, and nuts are assembled.

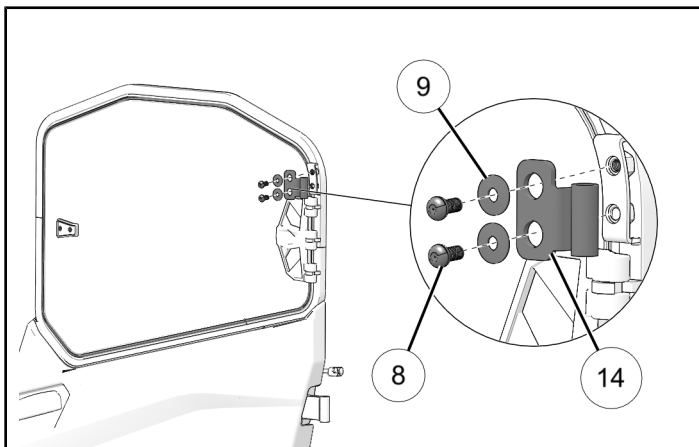
NOTICE

Washer acts as bearing surface to assist in smooth door operation.

6. Loosely install upper left door-side hinge ⑭ to door frame using two each screws ⑧ and conical spring washers ⑨. Make sure cupped (concave) side of washer is towards hinge.

NOTICE

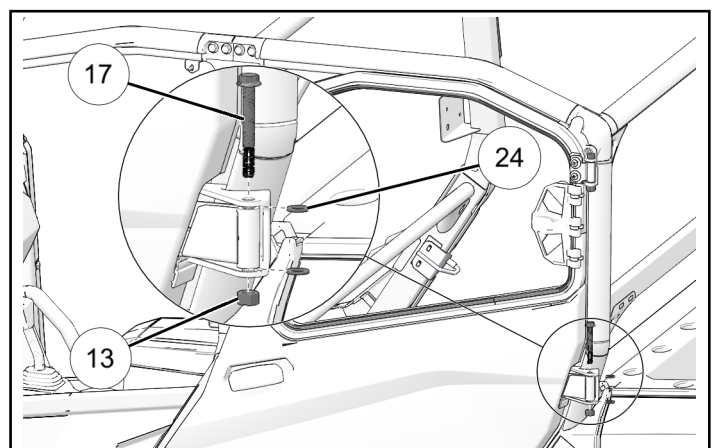
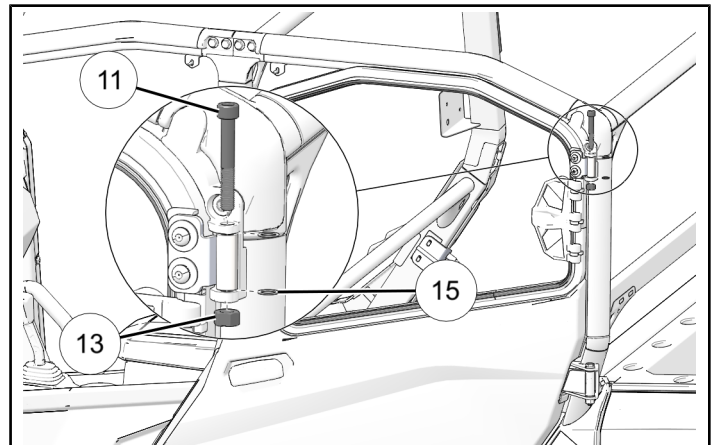
Note orientation of left side hinge ⑭. On both left side and right side hinge, the larger lobe of the mounting plate should face upward.



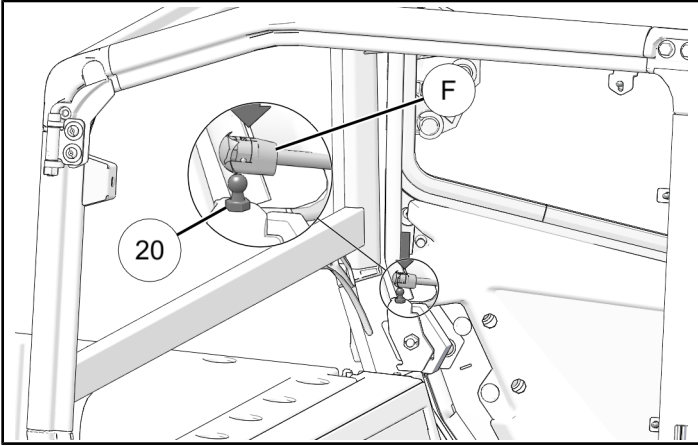
⚠ WARNING

Follow all chemical manufacturer instructions and safety precautions in next step. Failure to follow all manufacturer instructions and precautions may result in severe injury or death.

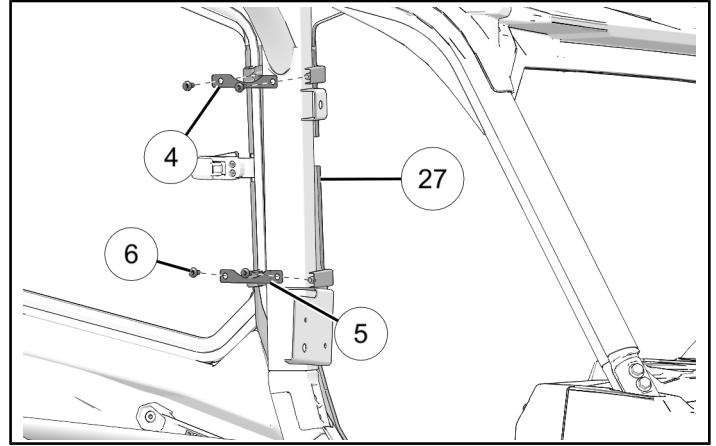
7. Grease hinge fasteners ⑪ and ⑰ with Polaris All Season Grease (or equivalent).
8. Install left door assembly ① to upper and lower chassis-side hinges as follows:



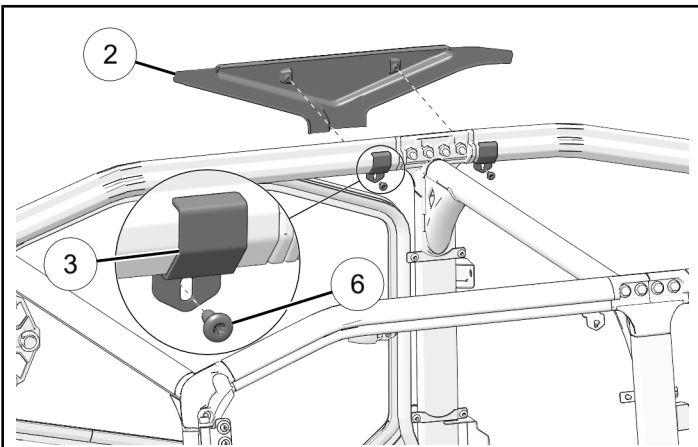
9. Install strut (F) to ball fitting (20) by firmly pushing strut into fitting. Retention clip will snap into place when strut is fully seated.



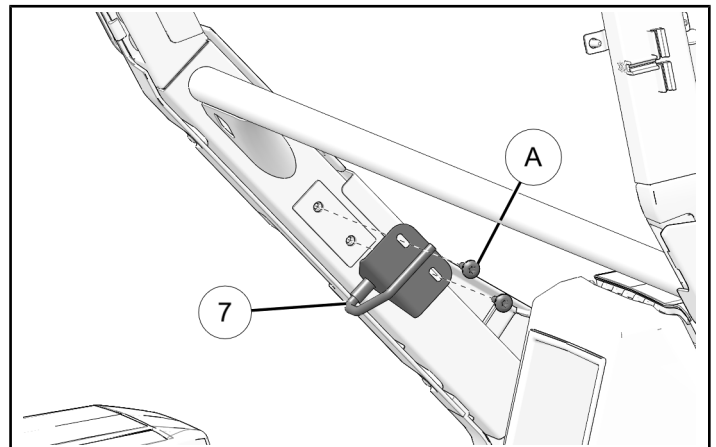
12. Install bracket (4) and bracket (5) each using two screws (6). Curve in bracket (5) should face downward. Do not overtighten screws.



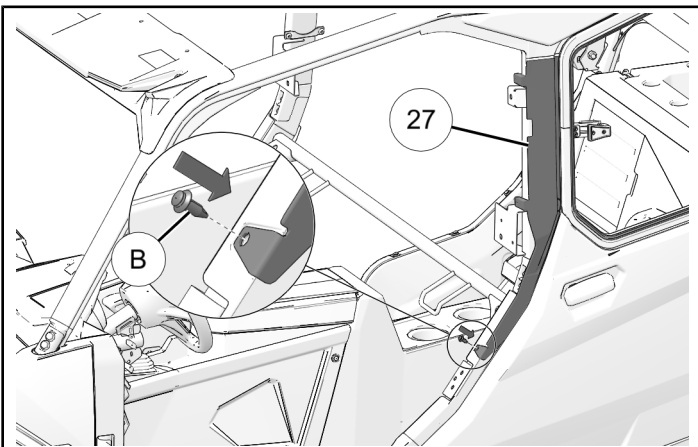
10. Install upper left B-pillar trim (2) using two each brackets (3) and screws (6). Do not overtighten screws.



13. Install striker bracket (7) to chassis using two retained screws (A). Center bracket, then tighten screws.



11. Install lower left B-pillar trim (27) using retained push pin rivet (B).



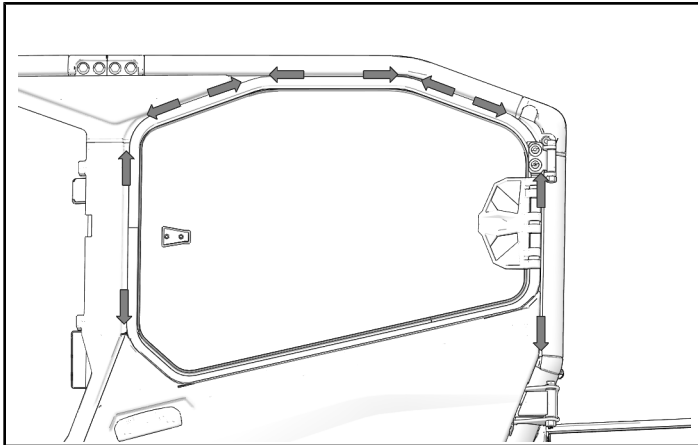
14. Check alignment of front door with B-pillar trim. Adjust front door as needed.

15. Make sure two upper DOOR-SIDE hinge screws ⑧ are slightly loose, then close door.

Push door inwards while attempting to center door in ROPS/chassis opening. Hold door in place, then observe gap between door and ROPS/chassis (around entire perimeter of door).

NOTICE

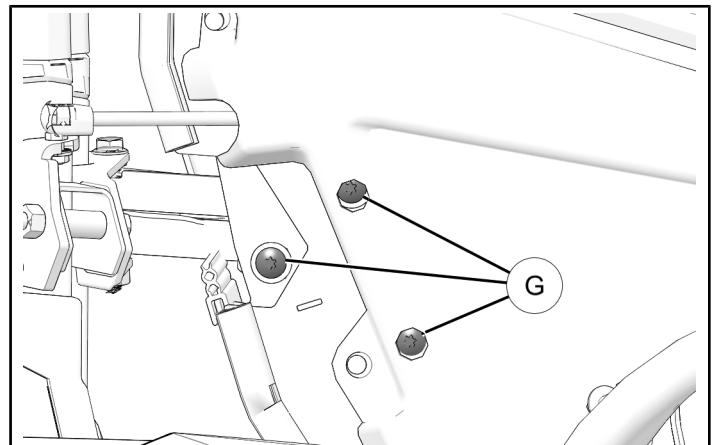
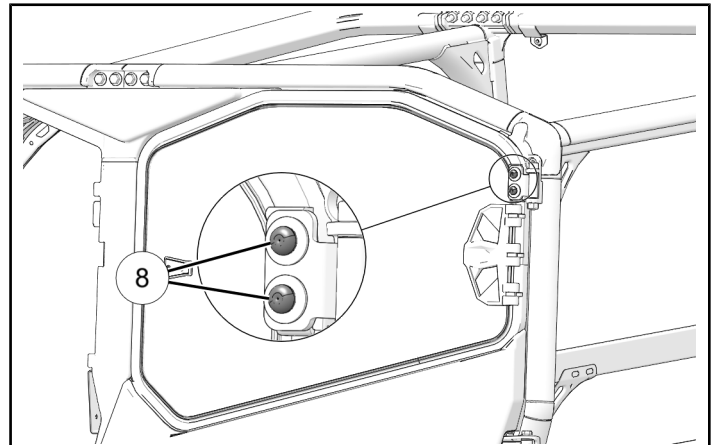
Make sure to check clearance between front edge of rear door and rear edge of front door.



- **IF PERIMETER GAP IS EVEN:** Tighten screws ⑧.
- **IF PERIMETER GAP IS UNEVEN:** Open door, loosen three lower DOOR-SIDE hinge screws ⑥ (interior side of door), close and center door in ROPS/chassis opening, then tighten screws ⑥ and ⑧.

TIP

Have one person hold and center the door, and a second person tighten the screws.

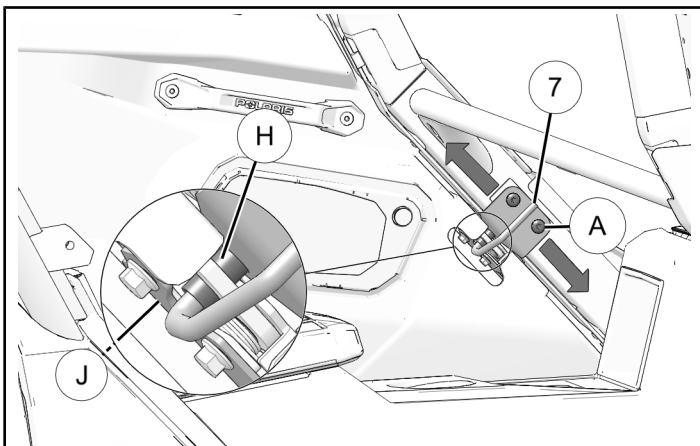


16. Open door latch (to make sure pawl is properly positioned), then slowly close door and observe engagement of striker pin **(N)** into latch mechanism. Adjust as follows:

- a. **HEIGHT:** Pin **(H)** should be centered vertically in opening of latch frame **(J)**. To adjust, loosen two screws **(A)**, slide striker bracket **(7)** up or down as required, then torque screws to specification.

TORQUE

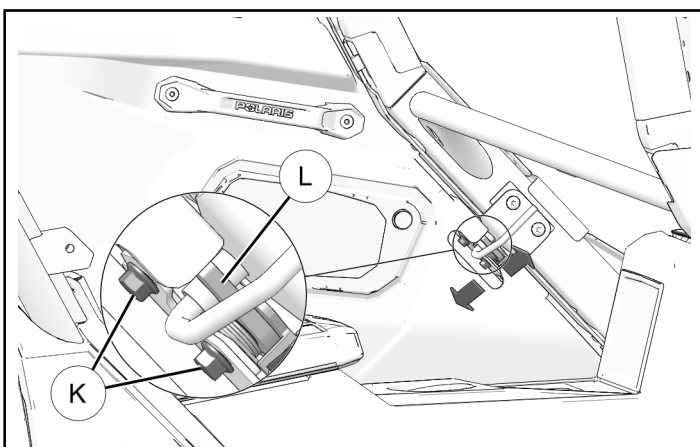
Screws **(A)**:
71 in-lbs (8 N·m)



- b. **DEPTH:** As required to achieve desired seal compression and door fairing. To adjust, loosen two screws **(K)**, slide latch mechanism **(L)** inboard or outboard as required, then retighten screws.

IMPORTANT

Make sure depth adjustment is made with door **FULLY** latched (second “click”), not partially latched (first “click”).

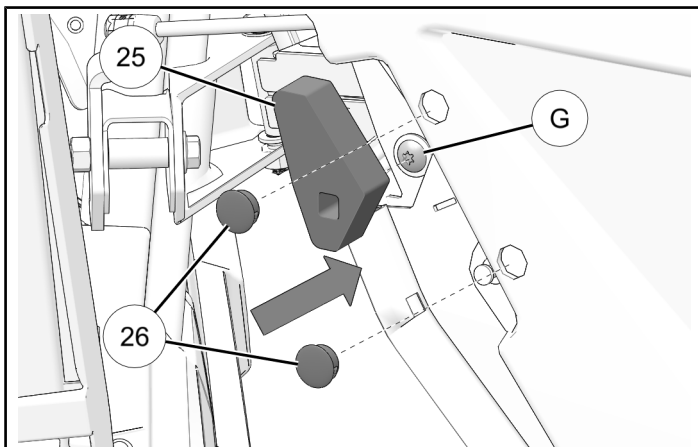


17. Torque upper hinge screws **(8)** (and lower hinge screws **(6)**, if loosened) to specification.

TORQUE

Screws **(8)** **(6)**:
17 ft-lbs (23 N·m)

18. Identify left side foam seal **(25)**. Peel adhesive backing from seal, then press firmly into place, aligning hole in seal with door-side hinge screw **(6)**. Install two plugs **(26)**.

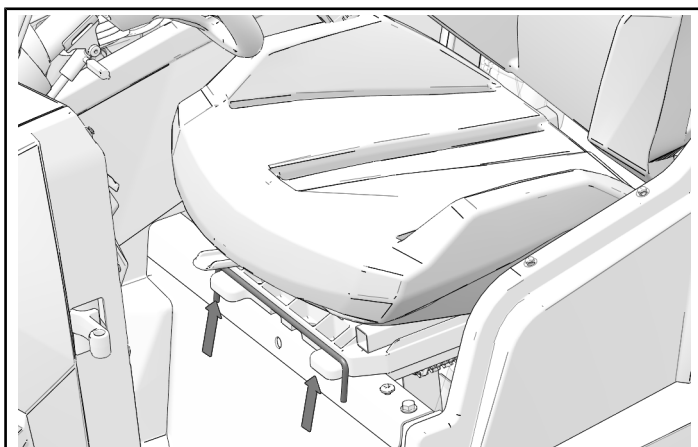


19. Repeat all steps for right side door assembly.

VEHICLE REASSEMBLY

REAR SEAT INSTALLATION

1. Install front tabs of left side seat base assembly into mounting bracket.



2. Press down on back of seat to latch seat into frame.
3. Lift up on seat to make sure it is fully installed.
4. Repeat steps for right side seat.

FEEDBACK FORM

A feedback form has been created for the installer to provide any comments, questions or concerns about the installation instructions. The form is viewable on mobile devices by scanning the QR code or by clicking [HERE](#) if viewing on a PC.

