

REAR PANEL KIT



P/N 2882706

APPLICATION

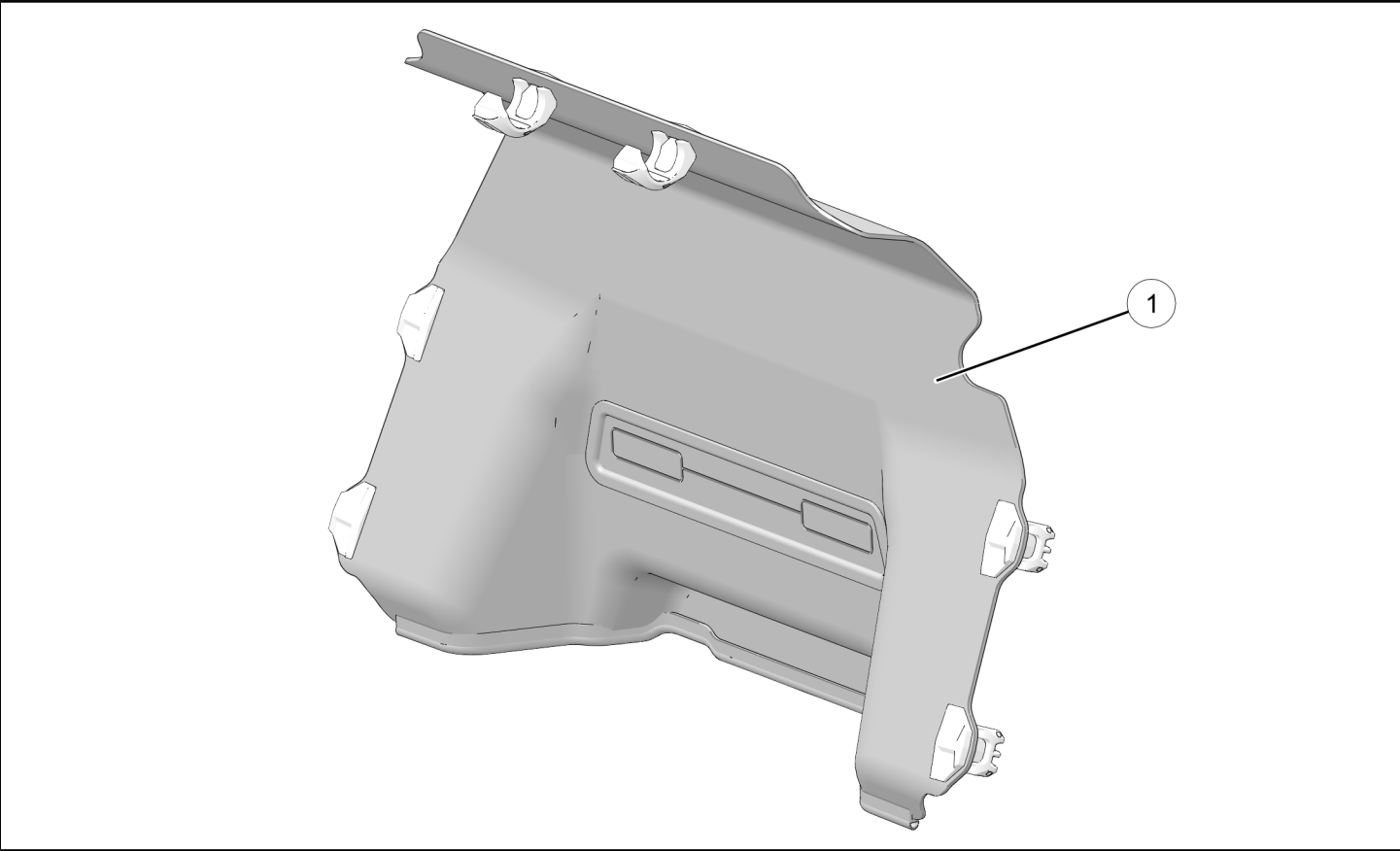
Verify accessory fitment at Polaris.com.

BEFORE YOU BEGIN

Read these instructions and check to be sure all parts and tools are accounted for. Please retain these installation instructions for future reference and parts ordering information.

KIT CONTENTS

This Kit includes:



REF	QTY	PART DESCRIPTION	PART NUMBER
1	1	Panel, Rear	2636879
	1	Instructions	9927975

TOOLS REQUIRED

- Safety Glasses*
- Cutting Tool*
- Deburring Tool*

* Tool requirement dependent on specific installation.

IMPORTANT

Your Rear Panel Kit is exclusively designed for your vehicle. Please read the installation instructions thoroughly before beginning. Installation is easier if the vehicle is clean and free of debris. For your safety, and to ensure a satisfactory installation, perform all installation steps correctly in the sequence shown.

ASSEMBLY TIME

Approximately 5 minutes

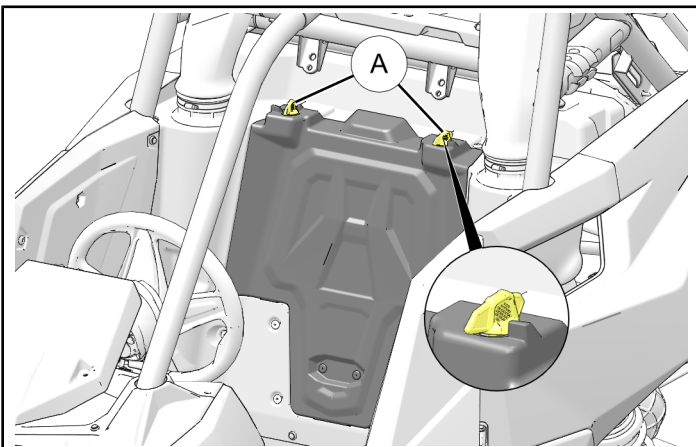
NOTE

Additional time may be required for optional steps, or to accommodate other accessories.

INSTALLATION INSTRUCTIONS

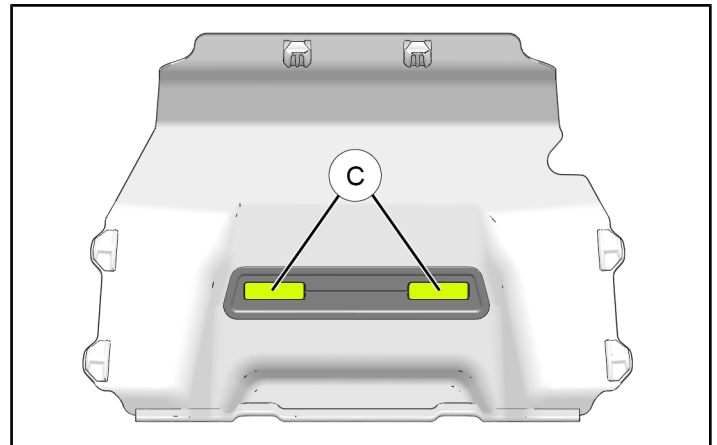
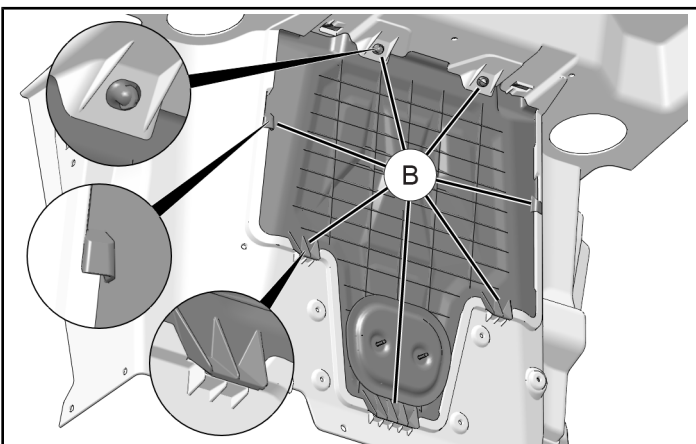
1. Shift vehicle transmission into "PARK". Turn key to "OFF" position and remove from vehicle.
2. Gain access.
 - a. Remove seat.
 - b. Remove air box access cover by unlocking two latches (A), then sliding cover upward and forward to disengage seven cover retention features (B).
3. OPTIONAL: If Driver Harness Kit (PN 2882281, or equivalent; sold separately) will be installed, then cut two rectangular openings (C) in rear panel as shown. Debur edges to prevent snagging or damage to harness.

Insert harness through openings, then install to vehicle per instructions included with harness kit.



NOTE

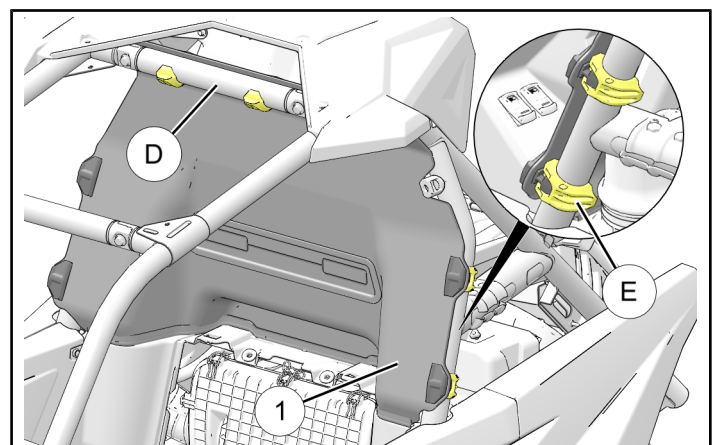
Following view shows rear side of air box access cover.



4. Install rear panel (1) by inserting upper edge of panel behind ROPS upper cross-member (D), push lower edge of panel into ROPS B-pillars, then lock six clamps (E).

NOTE

Seat not shown for clarity.



5. If driver harness was installed, ensure harness mechanism operates freely and harness does not rub on edges of openings. If harness rubs, adjust opening size per Step 3.
6. Restore access.

⚠ WARNING

If transporting vehicle in non-enclosed trailer then vehicle must FACE FORWARD, or rear panel ① must be removed. Failure to comply may allow airflow, vibration, or other factors to separate rear panel from vehicle and cause an accident, resulting in serious personal injury or death.

FEEDBACK FORM

A feedback form has been created for the installer to provide any comments, questions or concerns about the installation instructions. The form is viewable on mobile devices by scanning the QR code or by clicking [HERE](#) if viewing on a PC.

FEEDBACK FORM

