

EXTREME DUTY FRONT BUMPER KIT



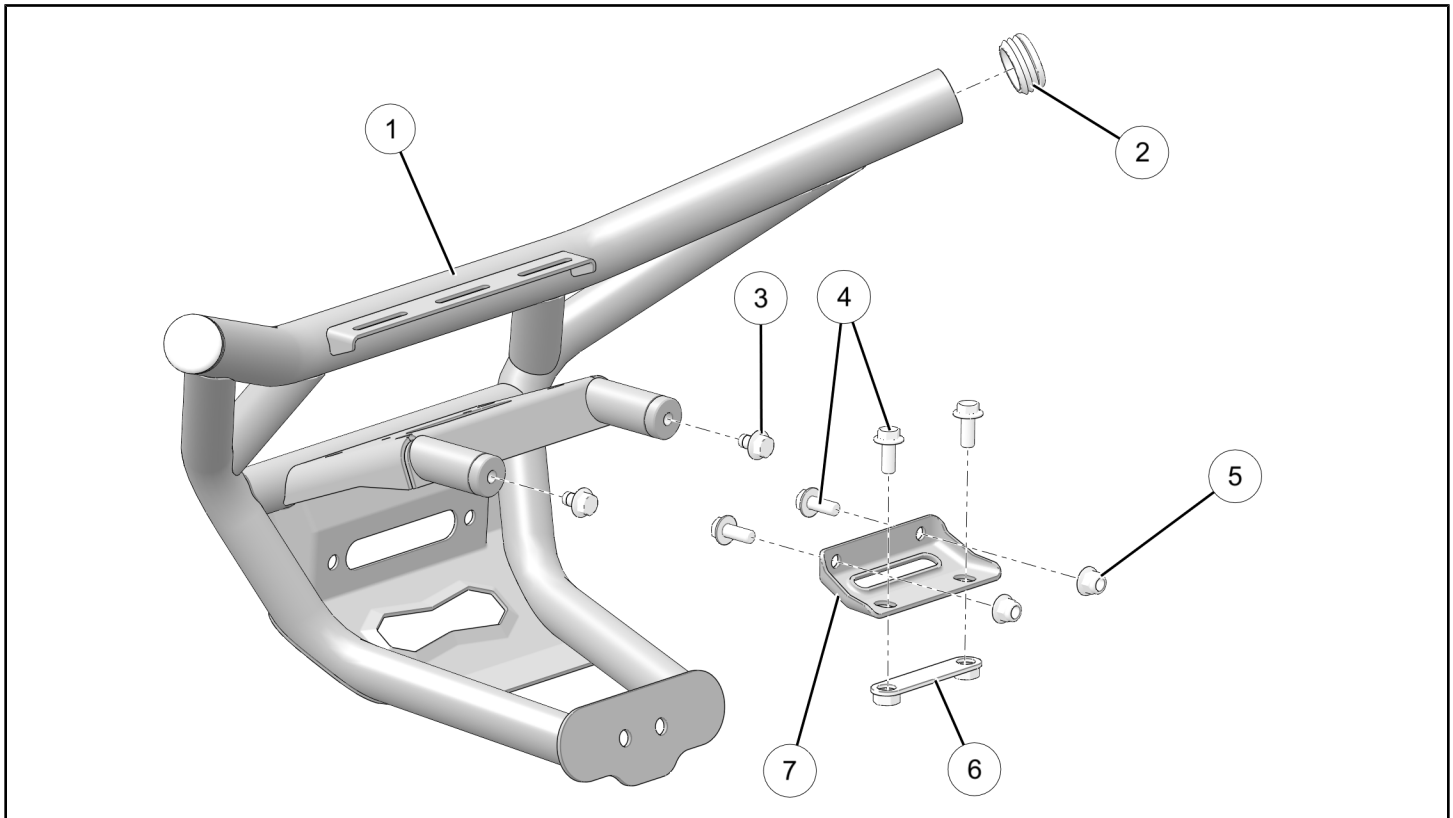
P/N 2883783-XXX

BEFORE YOU BEGIN

Read these instructions and check to be sure all parts and tools are accounted for. Please retain these installation instructions for future reference and parts ordering information.

KIT CONTENTS

This Kit includes:



REF	QTY	PART DESCRIPTION	PART NUMBER
1	1	Bumper, HD Front	-
2	2	Plug	5434191
3*	2	Screw, Hex Flange - M10 X 1.25 X 16, 8.8	-
4*	4	Screw, Hex Flange - M10 X 1.5 X 25, 8.8	7519071
5*	2	Nut, Hex Flange, Locking - M10 X 1.5, 8.8	7547313
6	1	Plate, Nut	-
7	1	Bracket, Bumper Support	-
8	1	Cable Tie (not shown)	7080761

Items marked (*) are included in Hardware Kit PN 2207093.

TOOLS REQUIRED

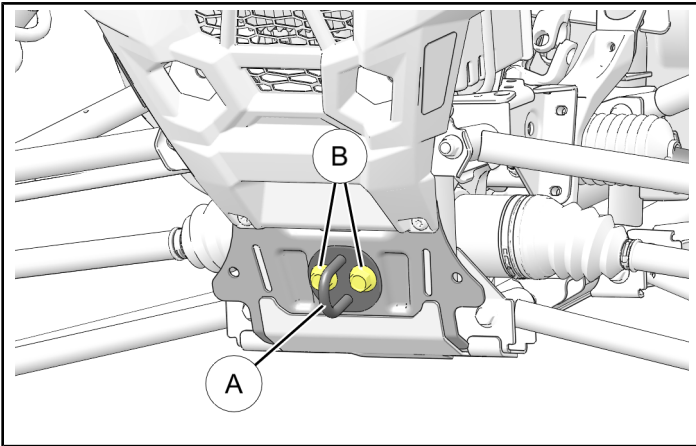
- Safety Glasses
- Pliers, Push Pin Rivet
- Screwdriver Set, Torx®
- Socket Set, Metric
- Torque Wrench
- Wrench Set, Metric

IMPORTANT

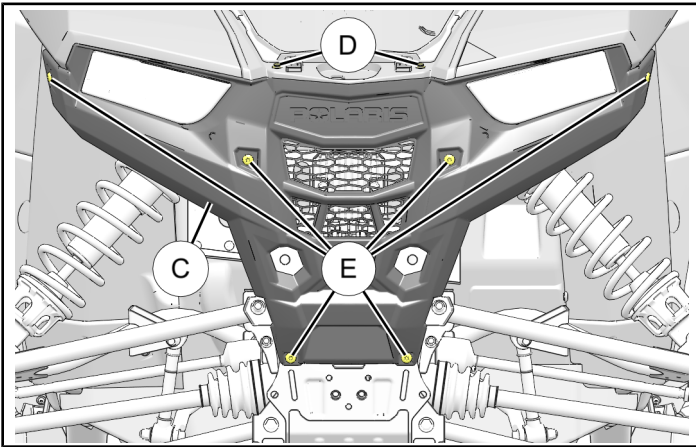
Your Extreme Duty Front Bumper Kit is exclusively designed for your vehicle. Please read the installation instructions thoroughly before beginning. Installation is easier if the vehicle is clean and free of debris. For your safety, and to ensure a satisfactory installation, perform all installation steps correctly in the sequence shown.

INSTALLATION INSTRUCTIONS

1. Shift vehicle transmission into "PARK". Turn ignition switch to "OFF" position and remove key.
2. Remove hood.
3. Remove tow hook (A) by removing two screws (B). Retain hook and screws.
6. Detach regulator (F) from chassis by removing two screws (G). Carefully move regulator with ATTACHED harnesses to gain access for installation of bumper support bracket (H) in next step.



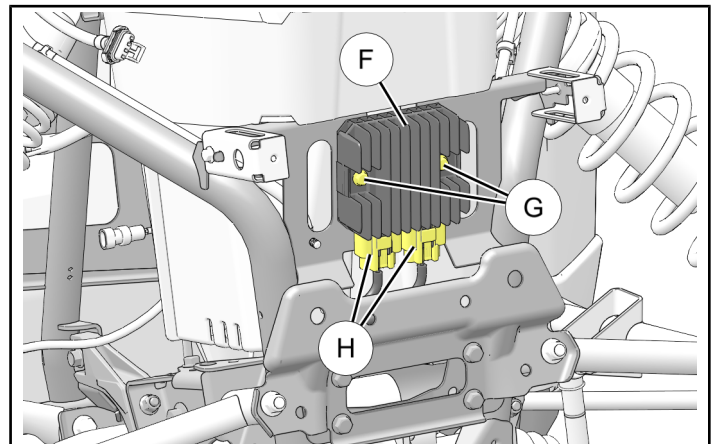
4. Detach electrical harnesses from both headlights.
5. Remove front fascia (C) by removing two push pin rivets (D) and six screws (E). Retain rivets and screws.



IMPORTANT

Support regulator as required to ensure harnesses are not kinked or damaged by contact with sharp edges.

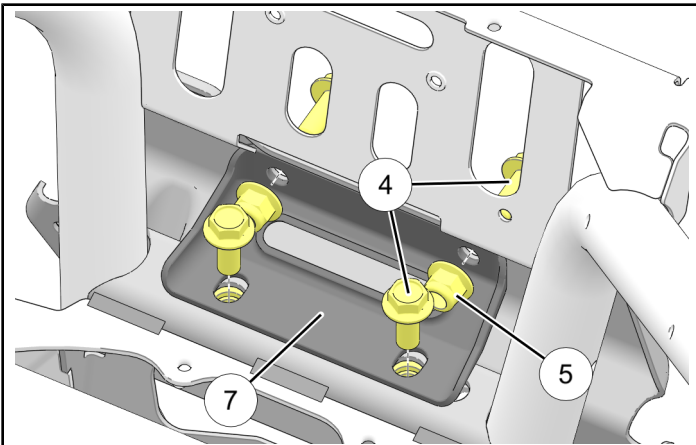
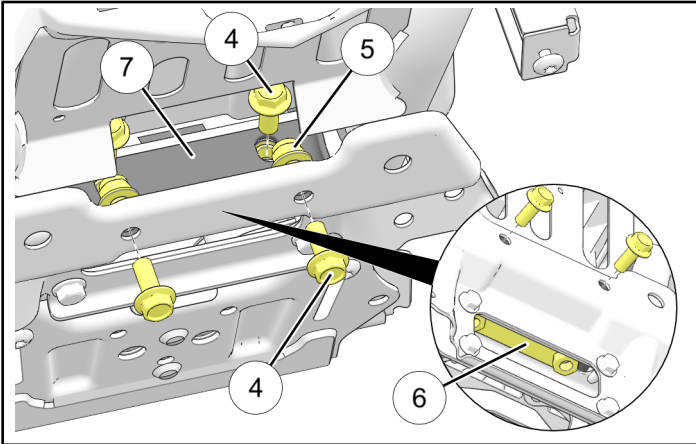
Do NOT detach connectors (H) from regulator.



- Install bumper support bracket ⑦ to suspension support structure using four screws ④, two nuts ⑤, and nut plate ⑥. Tighten all screws.

NOTE

Regulator and some chassis elements hidden for clarity.

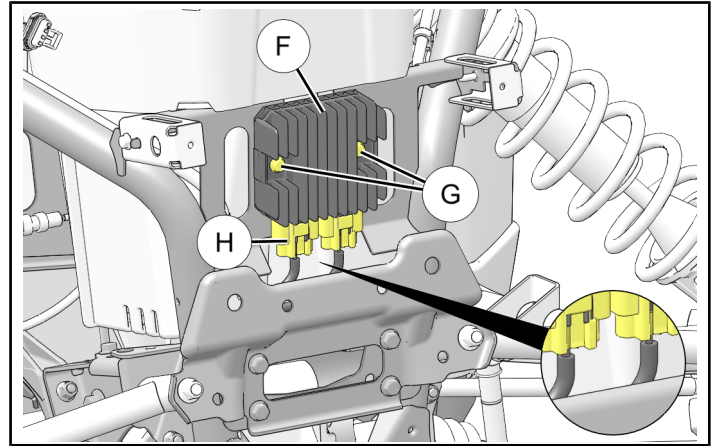


- Reinstall regulator ⑥ to chassis using two screws ⑥. Secure regulator harnesses ⑧ to one another with cable tie ③ (see inset).

Torque screws ⑥ to specification.

TORQUE

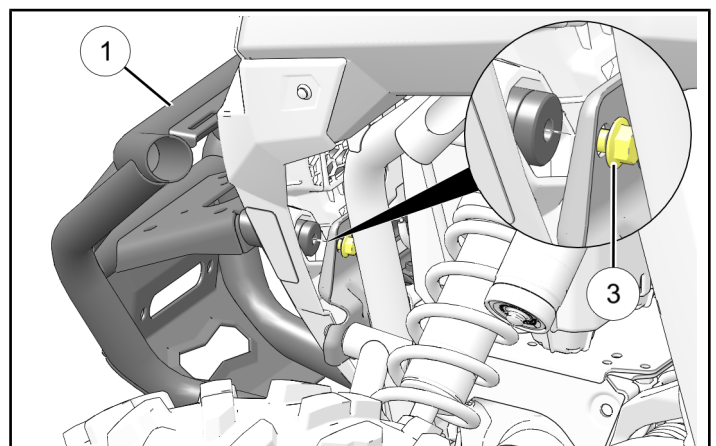
8 ft. lbs. (11 Nm) ± 10%



- Reinstall front fascia ② and reconnect electrical harnesses to LH and RH headlights. Do not reinstall tow hook at this time.
- OPTIONAL: If installing winch kit (sold separately), install winch to bumper ①. See instructions included with winch.
- Loosely install upper portion of bumper ① to suspension support structure using two screws ③.

NOTE

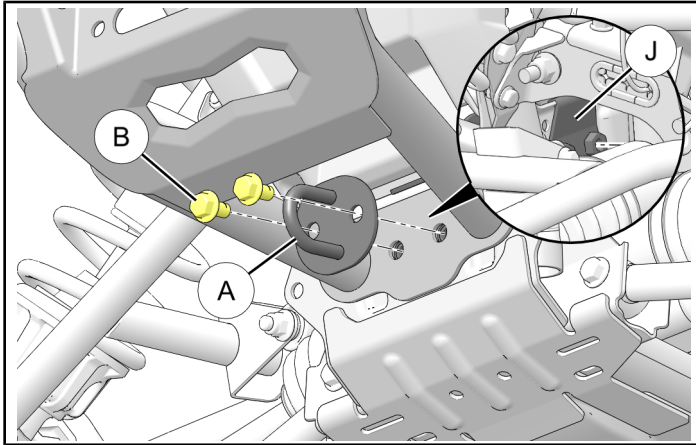
LH side shown; RH side opposite.



12. Reinstall tow hook (A) using two retained screws (B) through bumper into chassis.

TIP

Front tow hook is retained by backer plate (J) that loosely hangs from chassis structure. Hold backer plate in place while FULLY INSTALLING one screw. If first screw is not fully installed then rearward force may dislodge plate during installation of second screw.



13. Torque screws (3) and (B) to the same specification.

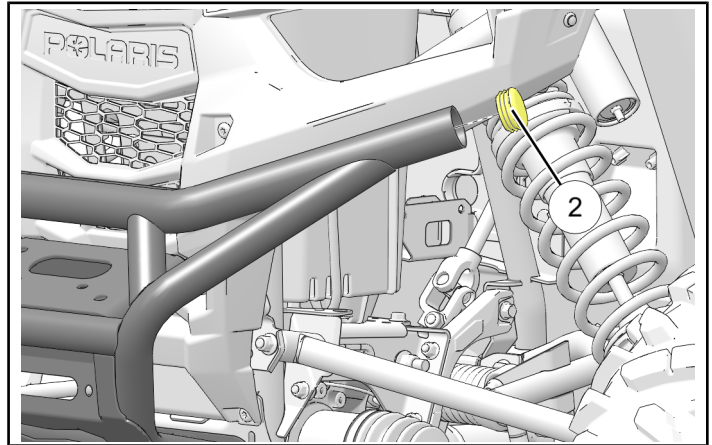
TORQUE

40 ft. lbs. (54 Nm) ± 10%

14. If not already pre-installed by factory, install two plugs (2) into ends of bumper (1).

NOTE

LH side shown; RH side opposite.



FEEDBACK FORM

A feedback form has been created for the installer to provide any comments, questions or concerns about the installation instructions. The form is viewable on mobile devices by scanning the QR code or by clicking [HERE](#) if viewing on a PC.

