

POLY ROOF (4 PASSENGER)



P/N 2881935, 2881936, 2881937

APPLICATION

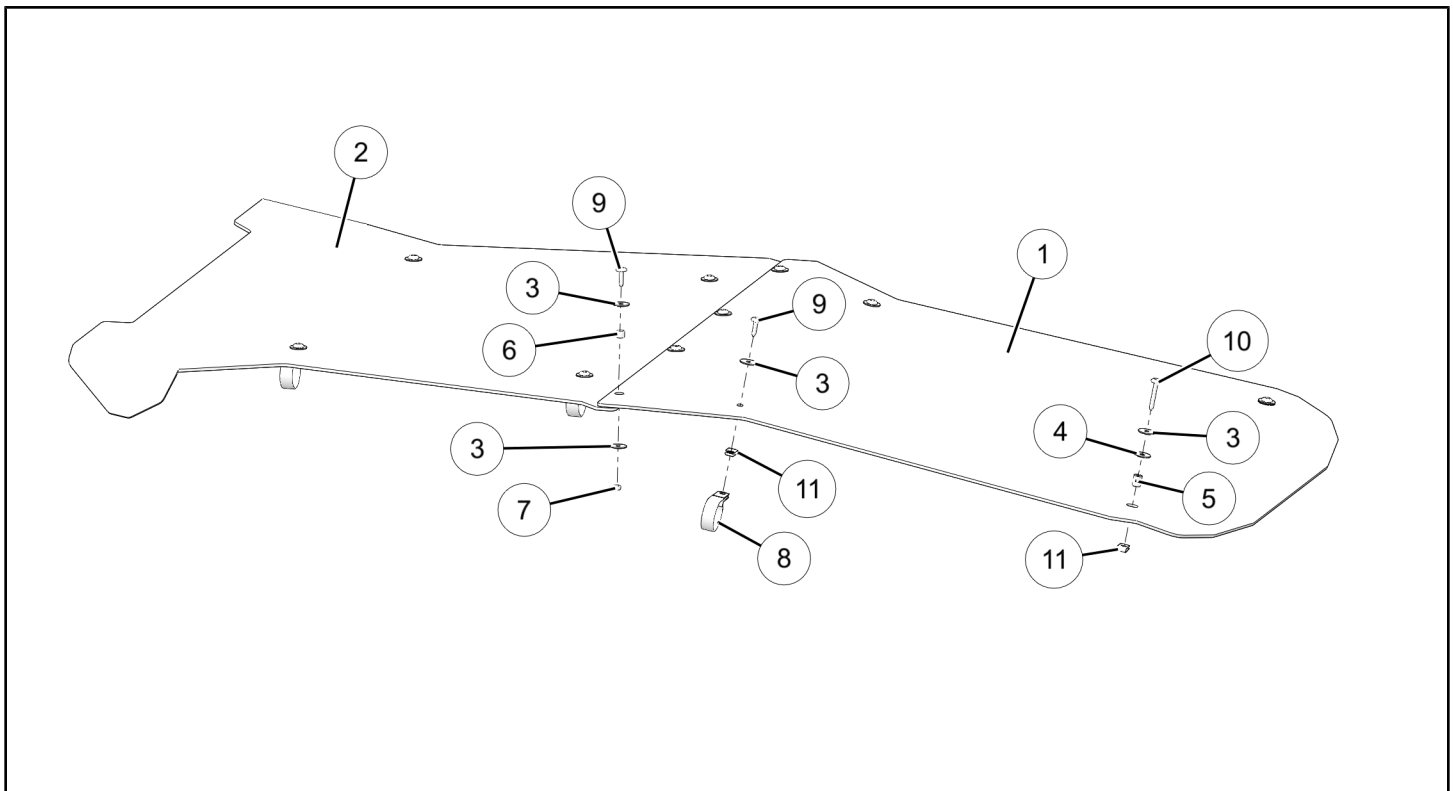
RZR 4 900, RZR XP 4 1000, RZR XP 4 TURBO

BEFORE YOU BEGIN

Read these instructions and check to be sure all parts and tools are accounted for. Please retain these installation instructions for future reference and parts ordering information.

KIT CONTENTS

This Kit includes:



REF	QTY	PART DESCRIPTION	PART NUMBER
1	1	Roof Panel, Front, Black Roof Panel, Front, Red Roof Panel, Front, White	2636249 2636251 2636252
2	1	Roof Panel, Rear, Black Roof Panel, Rear, Red Roof Panel, Rear, White	2636248 2636250 2636253
3*	16	Washer, Fender - 1/4 inch	—
4*	2	Washer, Rubber - 0.281 X 1.00 X 0.051	—
5*	2	Spacer - 0.50 OD X 0.252 ID X 0.438 L	—
6*	4	Spacer, Aluminum	—
7*	4	Nut - M6 X 1.0	—

REF	QTY	PART DESCRIPTION	PART NUMBER
8*	6	P-Clamp, 1.75	7081081
9*	10	Screw, Torx® - M6 X 1.0 X 25	7519650
10*	2	Screw, Torx® - M6 X 1.0 X 45	7519722
11*	8	Nut Clip - M6 X 1.0	7547674
		Instructions	9927123

Items marked (*) are included in Hardware Kit PN 2206320.

TOOLS REQUIRED

- Safety Glasses
- Screwdriver Set, Torx®
- Socket Set, Metric
- Socket Set, Torx® Bit
- Torque Wrench

IMPORTANT

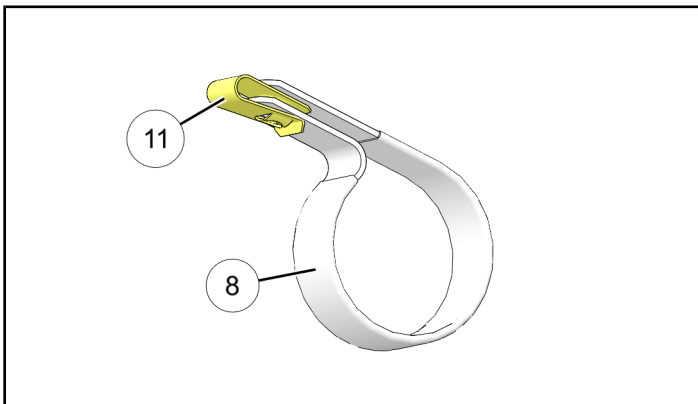
Your Poly Roof (4 Passenger) is exclusively designed for your vehicle. Please read the installation instructions thoroughly before beginning. Installation is easier if the vehicle is clean and free of debris. For your safety, and to ensure a satisfactory installation, perform all installation steps correctly in the sequence shown.

ASSEMBLY TIME

Approximately 20 minutes

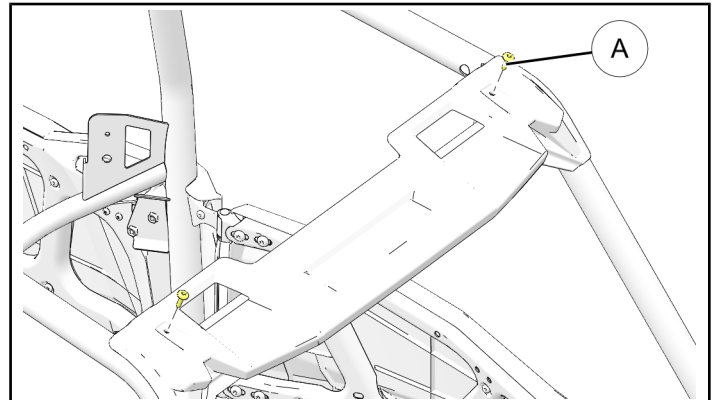
INSTALLATION INSTRUCTIONS

1. Shift vehicle transmission into "PARK". Turn key to "OFF" position and remove from vehicle.
2. Install six nut clips (11) to lower end of P-clamps (8) as shown.
3. Remove two rear screws (A) from visor panel as shown. Screws will not be reused.

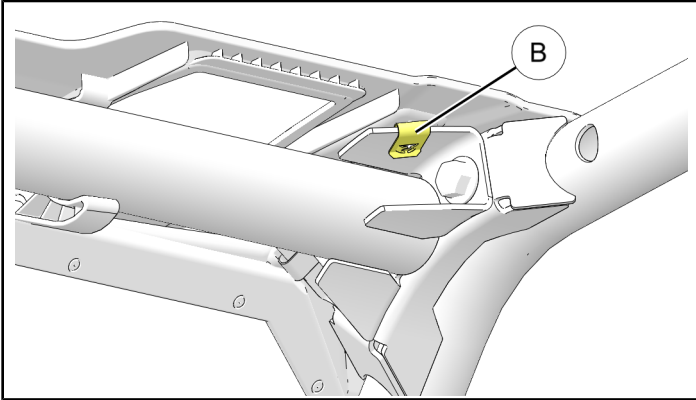


NOTE

Do not remove forward screws. Roof will be installed on top of visor panel.



- OPTIONAL: Replace existing nut clips (B) with new nut clips ⑪. Existing nut clips may be reused if in good condition



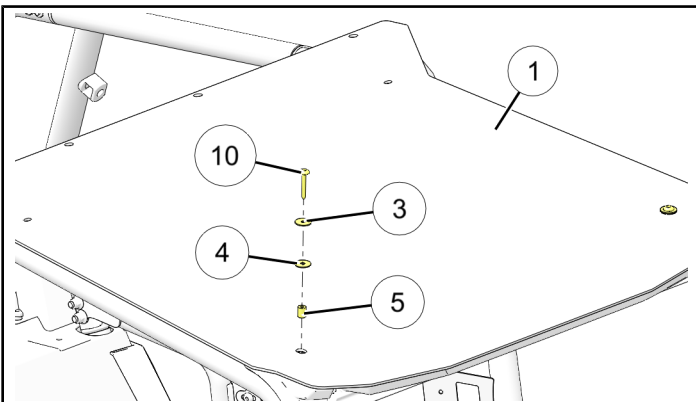
- Place front roof panel ① into position. Loosely secure front edge using screw ⑩, fender washer ③, rubber washer ④ and spacer ⑤ through roof into nut clip (B) or ⑪ as shown. Repeat at opposite side.

IMPORTANT

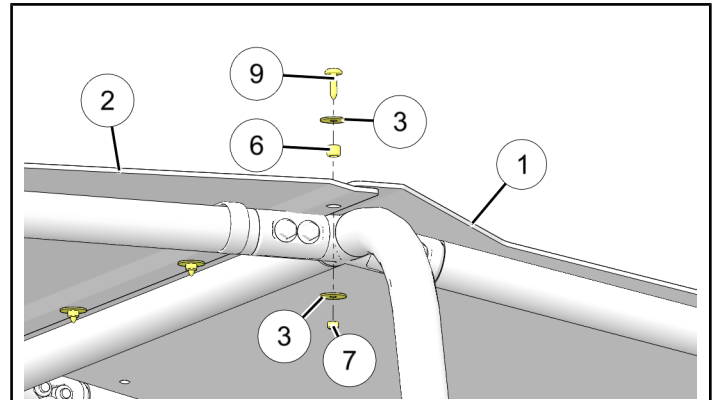
Ensure steel washer is under screw head, and rubber washer is against roof.

NOTE

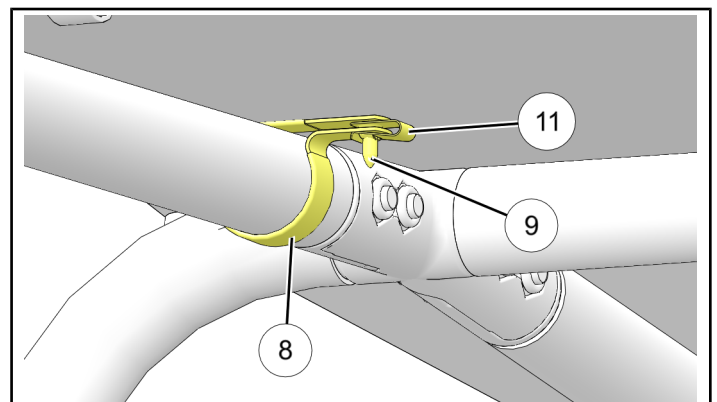
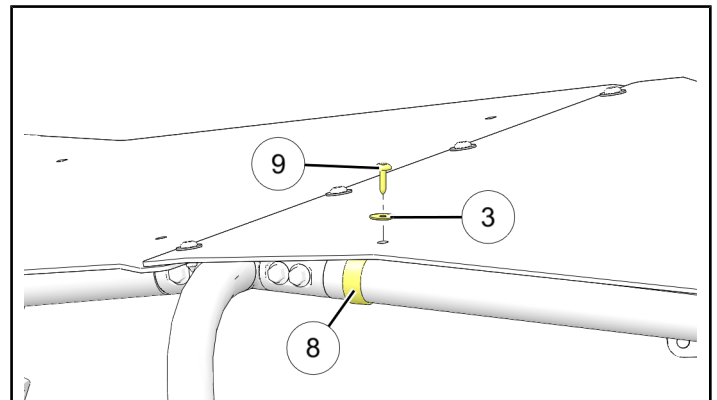
Spacers ensure roof panel is not over-compressed.



- Place rear roof panel ② into position so front four fastener holes align with rear four fastener holes on front panel ①. Loosely secure front and rear panels together using screw ⑨, fender washer ③, spacer ⑥, fender washer ③, and nut ⑦ as shown. Repeat at remaining three attach locations.



- Wrap two P-clamp/nut clip assemblies over front ROPS and four P-clamp/nut clip assemblies over rear ROPS. Loosely secure each assembly to roof panels using screw ⑨ and fender washer ③ as shown.



- Torque fasteners to specification.

TORQUE

Front panel visor (Step 5): 7 ft. lbs. (9 Nm)
 Front panel to rear panel (Step 6): 7 ft. lbs. (9 Nm)
 P-clamp (Step 7): 5 ft. lbs. (7 Nm)