

VEHICLE COVER KIT



P/N 2881787, 2881841, 2889723, 2889724, 2889725, 2889726

BEFORE YOU BEGIN

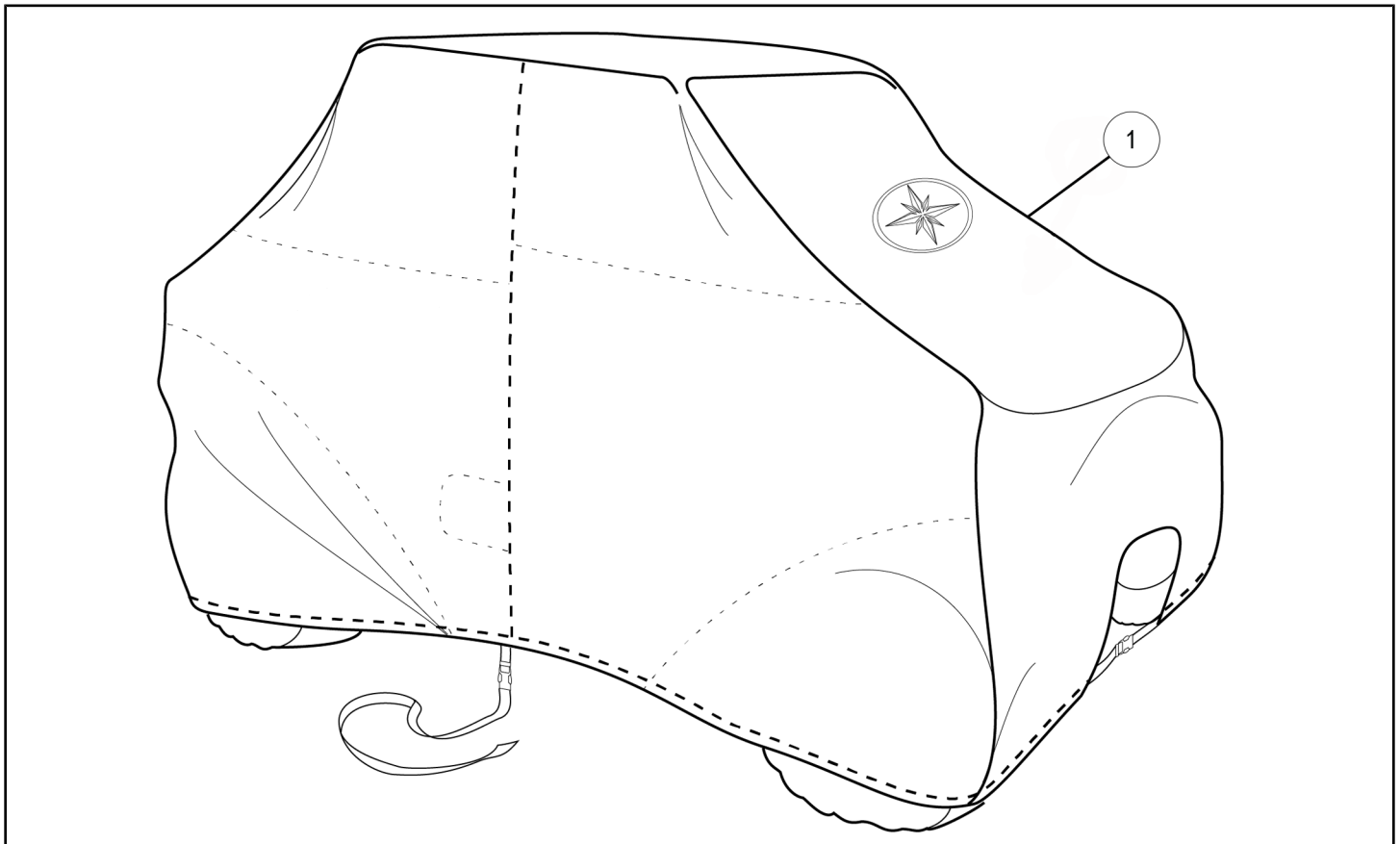
Read these instructions and check to be sure all parts and tools are accounted for. Please retain these installation instructions for future reference and parts ordering information.

APPLICATION

Verify accessory fitment at Polaris.com.

KIT CONTENTS

Kit P/N 2881841 shown; other kits similar.



REF	QTY	PART DESCRIPTION	PART NUMBER
1	1	Vehicle Cover	-

TOOLS REQUIRED

- Safety Glasses

IMPORTANT

Your Vehicle Cover Kit is exclusively designed for your vehicle. Please read the installation instructions thoroughly before beginning. Installation is easier if the vehicle is clean and free of debris. For your safety, and to ensure a satisfactory installation, perform all installation steps correctly in the sequence shown.

ASSEMBLY TIME

Approximately 5 minutes

INSTALLATION INSTRUCTIONS

NOTICE

Kit P/N 2881841 shown; other kits similar.

1. Shift vehicle transmission into "PARK". Turn key to "OFF" position and remove from vehicle.
2. Preparation:
 - a. Examine vehicle for any accessories that extend outside of ROPS and/or vehicle body to ensure proper fit of cover and prevent damage. Remove or stow accessories and/or install padding as necessary.
 - b. Ensure exterior of vehicle is clean. Transporting a dirty vehicle with cover installed may damage vehicle finish.
 - c. If not already done, temporarily attach ratchet **A** to cover using hook and loop strips as shown.



3. Carefully drape cover **1** over vehicle, pulling cover as far down over tires as possible.

IMPORTANT

Cover **MUST** be pulled down below lower surface of tires to ensure it stays in place during transport.

NOTICE

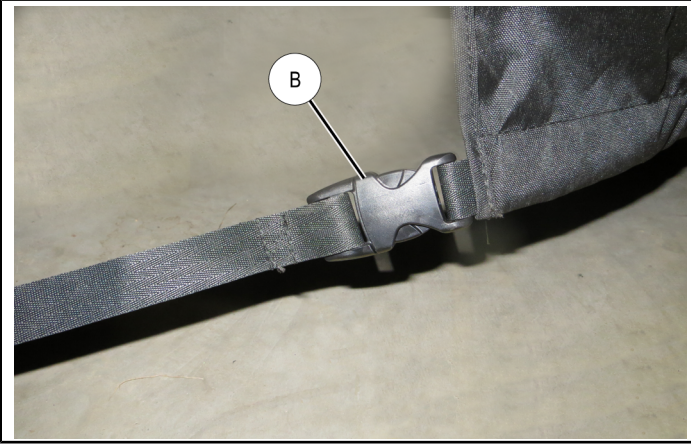
Exterior of cover has "FRONT" label; ratchet is located at left rear corner.



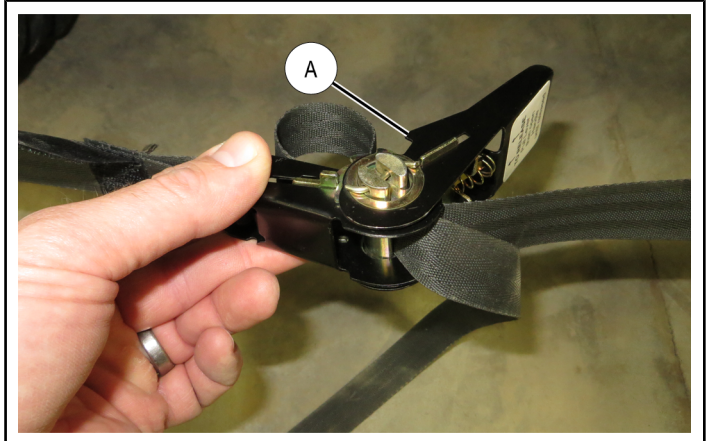
4. Secure front of cover by connecting buckles (B) as shown.

NOTICE

LH strap is sewn to edge of cover opening; RH strap is free to slide in cover pocket. Cover opening accommodates accessory winch or plow installation (sold separately).



- c. Pull RH strap tight, then fold strap and insert into ratchet (A) spool as shown.

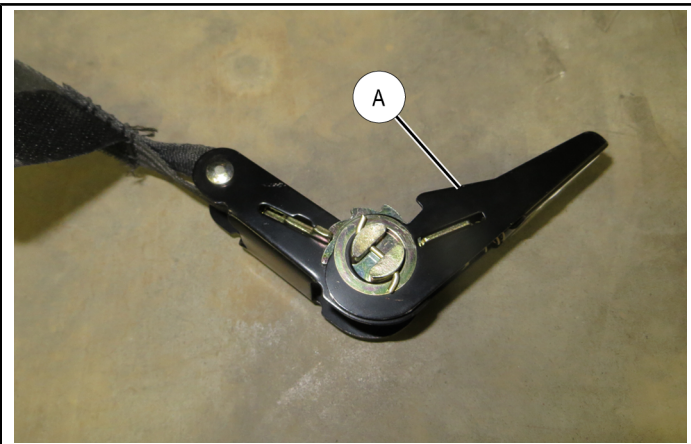


- d. Operate ratchet mechanism until slack is removed, then examine all four tires to ensure strap is positioned BELOW LOWER TIRE LUGS as shown. Adjust as necessary.



5. Secure rear of cover.

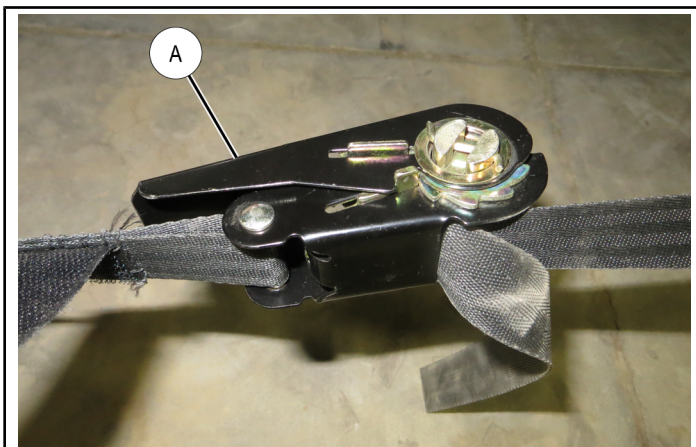
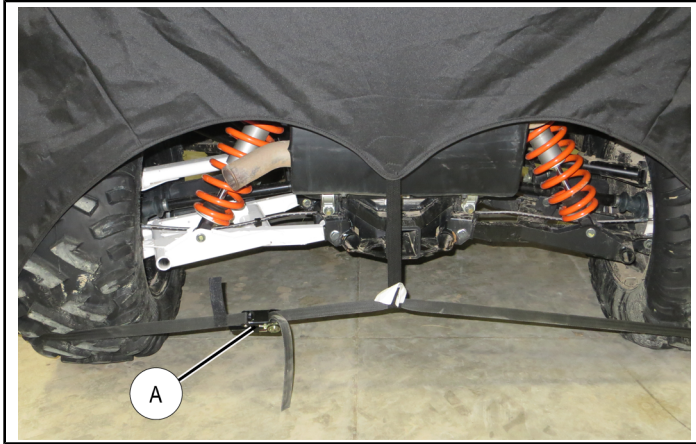
- a. Partially close ratchet (A) as shown.



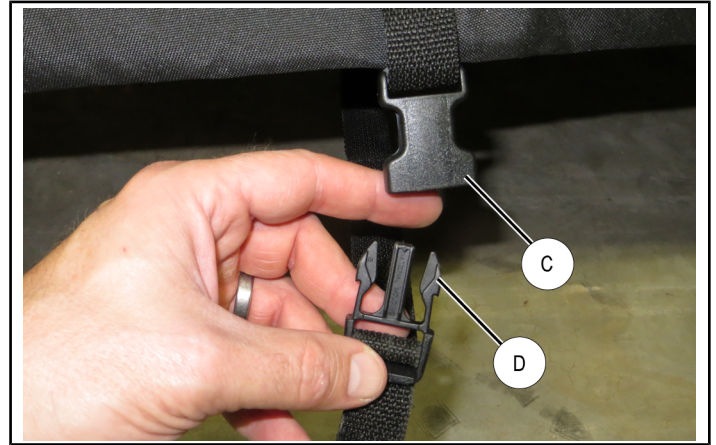
- b. Thread RH strap through center strap as shown.



- e. Tension strap sufficiently to prevent it from slipping above tire lugs during transport, then fully close ratchet lever (A) as shown.



6. Secure middle of cover by connecting male buckles (D) on each end of center strap to female buckles (C) sewn into cover. Tighten strap as required, then confirm strap is not in contact with sharp vehicle structure.



7. Ensure fuel filler zipper is fully closed.

TRANSPORT INSTRUCTIONS

1. Ensure cover is pulled down over tires, straps are positioned **BELOW LOWER TIRE LUGS**, and straps are properly tensioned. Adjust as necessary.
2. Trailer covered vehicle in **FORWARD FACING DIRECTION ONLY**.
3. Ensure fuel filler zipper is fully closed.
4. Remove or adjust cover if buffeting occurs during transport.
5. When removing cover, stow ratchet as described in Installation Instructions, Step 2.c. above.

INSTRUCTION FEEDBACK FORM

A feedback form has been created for the installer to provide any comments, questions or concerns about the installation instructions. The form is viewable on mobile devices by scanning the QR code or by clicking [HERE](#) if viewing on a PC.

