

REAR VIEW MIRROR KIT



P/N 2881439

APPLICATION

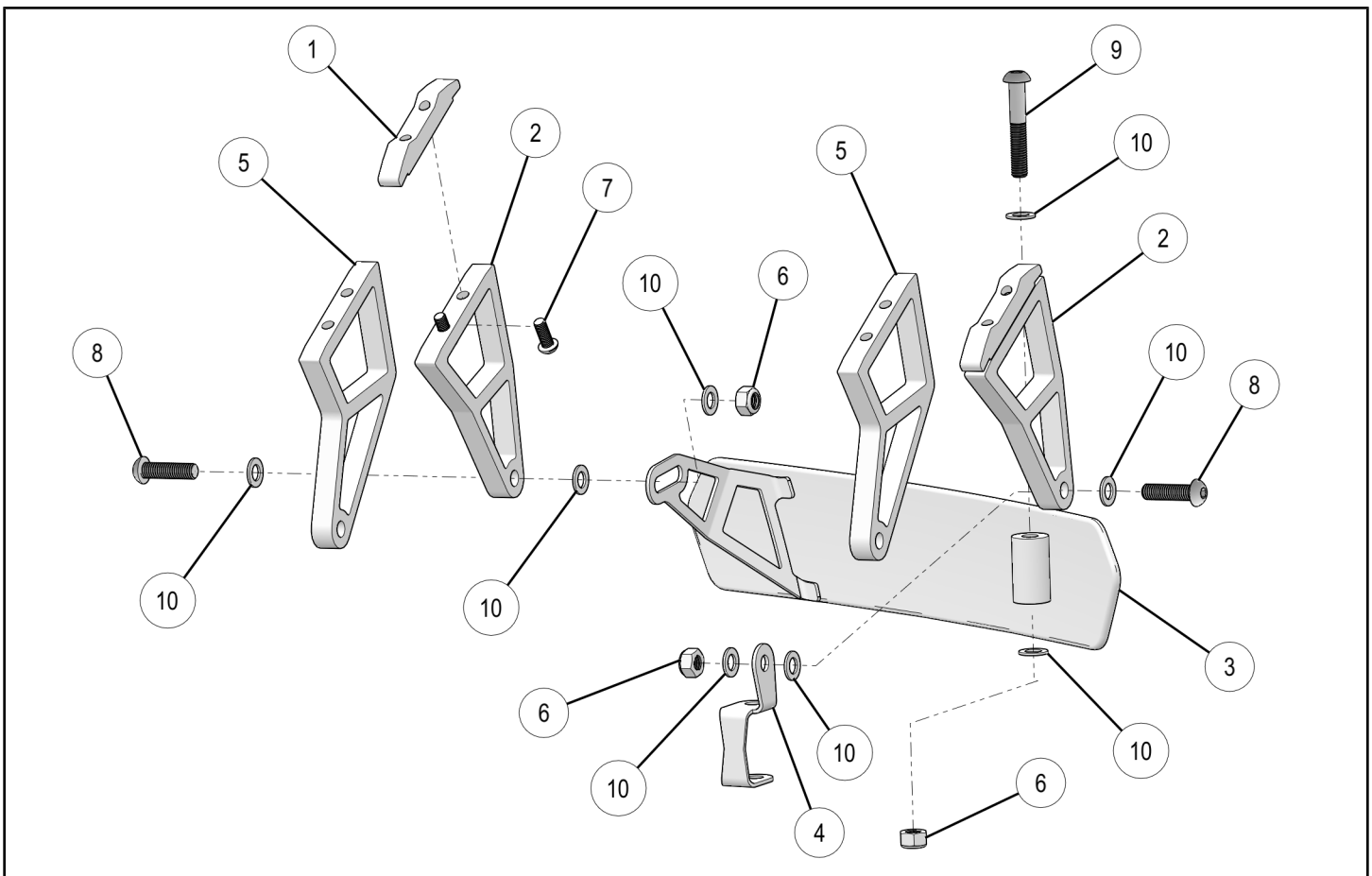
All Full-Size *RANGER* MY13 and Newer, and All 2 Passenger *RANGER* MY15 and Newer

BEFORE YOU BEGIN

Read these instructions and check to be sure all parts and tools are accounted for. Please retain these installation instructions for future reference and parts ordering information.

KIT CONTENTS

This Kit includes:



REF	QTY	PART DESCRIPTION	PART NUMBER
1	2	Clamp	-
2	2	Bracket (use only on Full-Size Ranger with windshield wiper)	-
3	1	Mirror	-
4	1	Support Bracket	-
5	2	Bracket (use on all Ranger except Full-Size with windshield wiper)	-
6	3	Nut, Hex Flange - M8 X 1.25	-

REF	QTY	PART DESCRIPTION	PART NUMBER
7	4	Screw - M6 X 1.0 X 16	-
8	2	Screw - M8 X 1.25 X 30	-
9	1	Screw - M8 X 1.25 X 65	-
10	8	Washer - 8.5 X 15 X 1.25	-
		Instructions	9926782

TOOLS REQUIRED

- Safety Glasses
- Metric Hex Key Set
- Metric Hex Bit Socket Set

IMPORTANT

Your REAR VIEW MIRROR KIT is exclusively designed for your vehicle. Please read the installation instructions thoroughly before beginning. Installation is easier if the vehicle is clean and free of debris. For your safety, and to ensure a satisfactory installation, perform all installation steps correctly in the sequence shown.

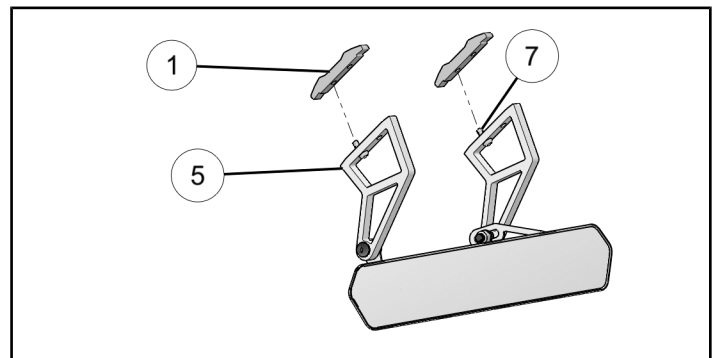
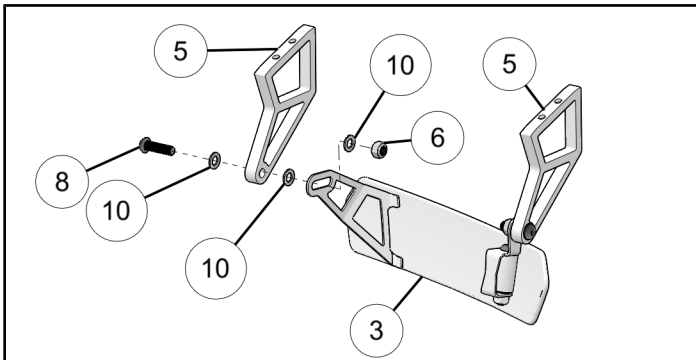
ASSEMBLY TIME

Approximately 15 minutes

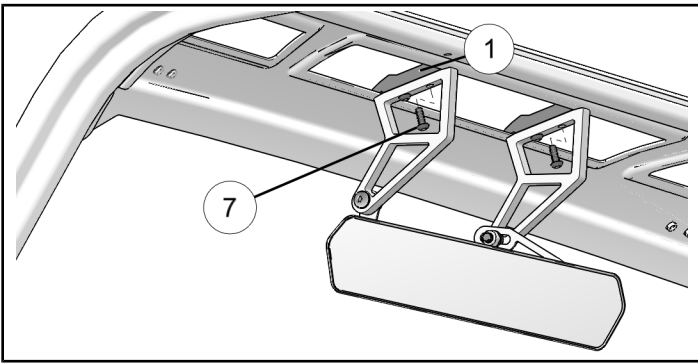
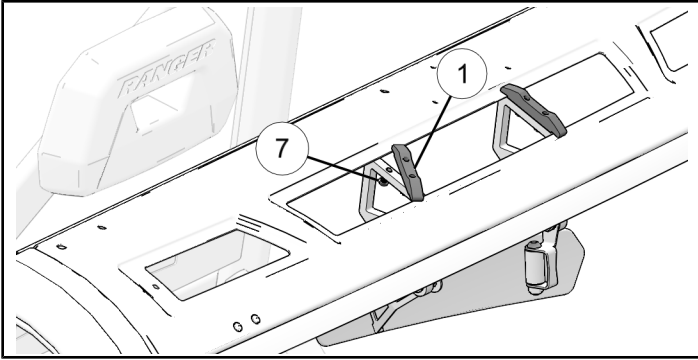
INSTALLATION INSTRUCTIONS

1. Place vehicle in "PARK". Turn key to "OFF" position and remove from vehicle.
2. Loosely install applicable bracket (see below for detail) to each side of mirror ③ using screw ⑧, three washers ⑩, and nut ⑥.
 - a. Full-Size *RANGER* with windshield wiper: Use bracket ②.
 - b. All other *RANGER*: Use bracket ⑤.
3. Loosely install clamps ① to brackets ② or ⑤ using only one screw ⑦ per clamp as shown. It does not matter which of the two holes is used for each clamp.

NOTE
Bracket ⑤ shown; bracket ② similar.



4. Rotate clamps ① so mirror assembly can be inserted up through slot in vehicle mount plate, then rotate clamps ① back so remaining screws ⑦ can be installed as shown.



5. Position mirror as desired, then tighten all screws.

CAUTION

Do not overtighten screws ⑦ in aluminum clamps ① to avoid thread damage.