

# REARVIEW MIRROR AND BACKUP CAMERA KIT

P/N 2881483



## APPLICATION

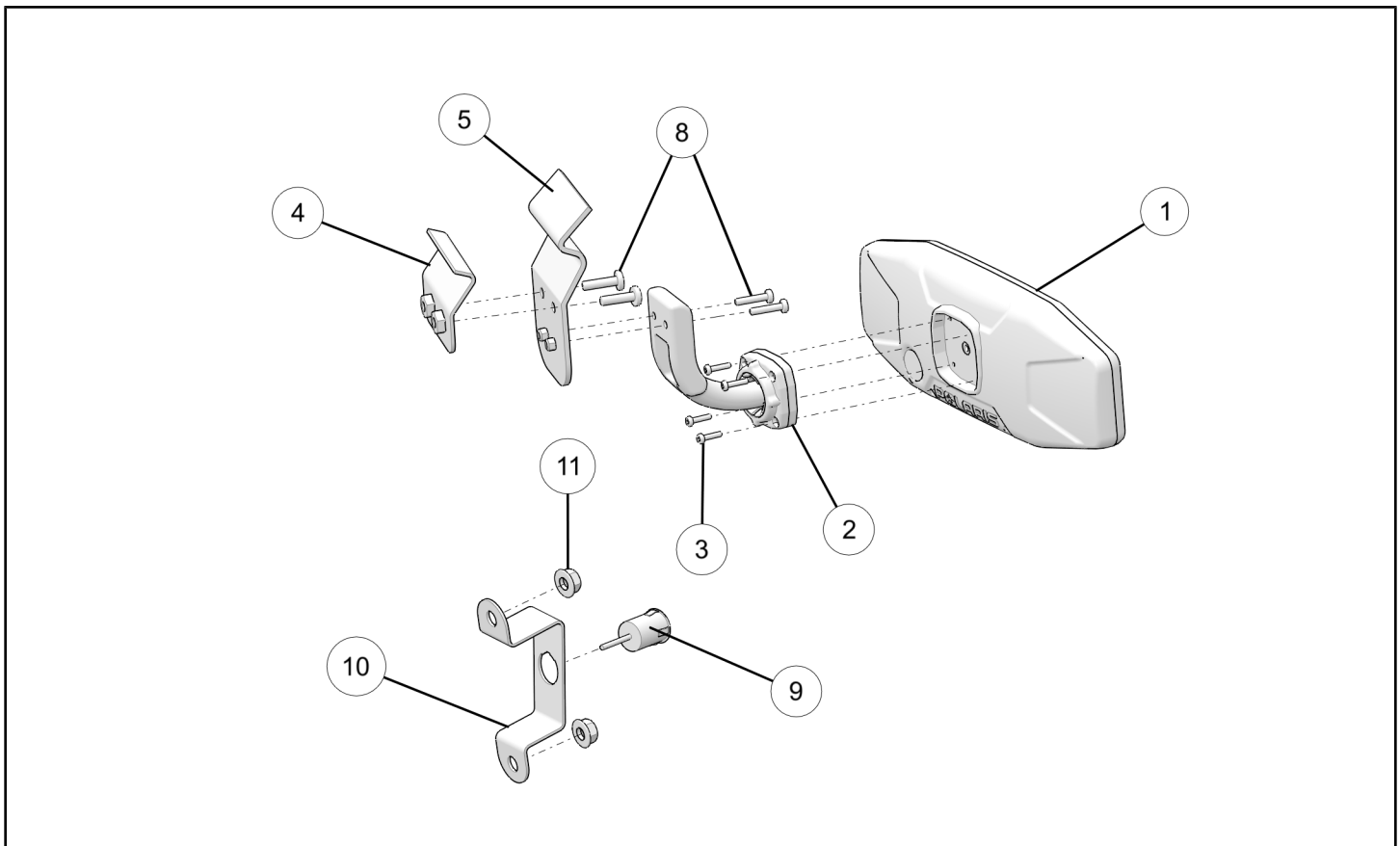
Verify accessory fitment at [Polaris.com](http://Polaris.com).

## BEFORE YOU BEGIN

Read these instructions and check to be sure all parts and tools are accounted for. Please retain these installation instructions for future reference and parts ordering information.

## KIT CONTENTS

This Kit includes:



REF	QTY	PART DESCRIPTION	PART NUMBER
1	1	Mirror	-
2	1	Arm Assembly, Mirror	-
3	4	Screw, Phillips Head - M3 X 0.5 X 14	-
4	1	Bracket, Forward	-
5	1	Bracket, Rear	-
6	2	Screw - M6 X 1.0 X 40 (not shown)	-
7	2	Nut - M6 (not shown)	-
8	4	Screw, Phillips Head - M6 X 1.0 X 20	-

REF	QTY	PART DESCRIPTION	PART NUMBER
9	1	Camera	-
10	1	Bracket, Camera	5261986
11	2	Nut, Hex Flange - M8 X 1.25	-
12	1	Harness, Camera (not shown)	2413453
13	10	Cable Tie (not shown)	7080761
	1	Instructions	9926778

## TOOLS REQUIRED

- Safety Glasses
- Drill
- Drill Bit; 1/4 inch
- Screwdriver, Phillips
- Screwdriver Set, Torx®
- Socket Set, Metric
- Wrench Set, Metric

## IMPORTANT

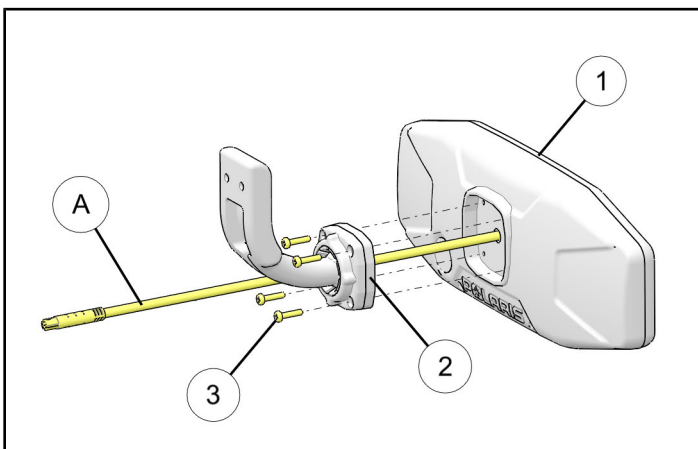
Your REARVIEW MIRROR AND BACKUP CAMERA KIT is exclusively designed for your vehicle. Please read the installation instructions thoroughly before beginning. Installation is easier if the vehicle is clean and free of debris. For your safety, and to ensure a satisfactory installation, perform all installation steps correctly in the sequence shown.

## ASSEMBLY TIME

Approximately 60 minutes

## INSTALLATION INSTRUCTIONS

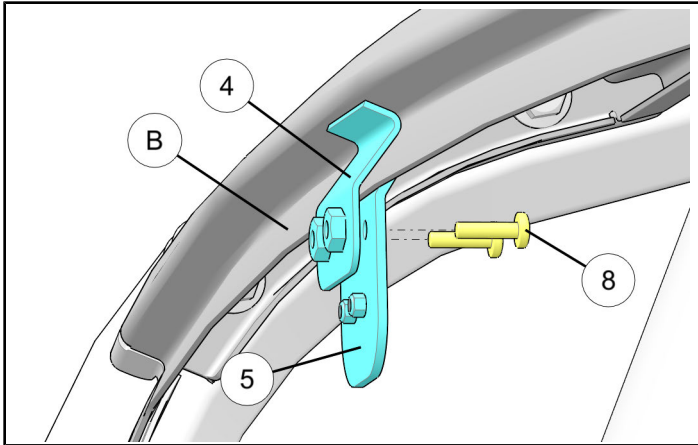
1. Shift vehicle transmission into "PARK". Turn key to "OFF" position and remove from vehicle.
2. Gain access.
  - a. Raise cargo bed.
  - b. Remove seat bottom cushion to gain battery access.
3. Disconnect black negative (-) cable from battery.
4. Insert mirror jumper harness (A) through ball end of arm assembly (2), then install arm assembly to mirror (1) using four screws (3).



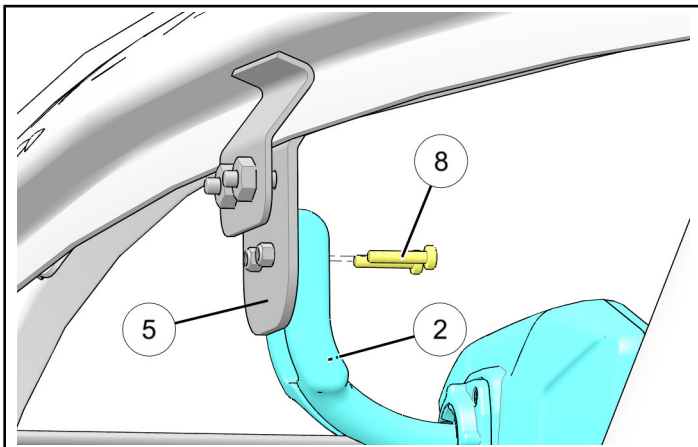
5. Install mirror.

**Vehicles WITHOUT Windshield Wiper Kit (PN 2879754): MY16 and Older**

- a. Assemble both brackets ④ and ⑤ to ROPS upper mount plate ⑥ as shown, then install two screws ⑧. Do not fully tighten screws at this time.



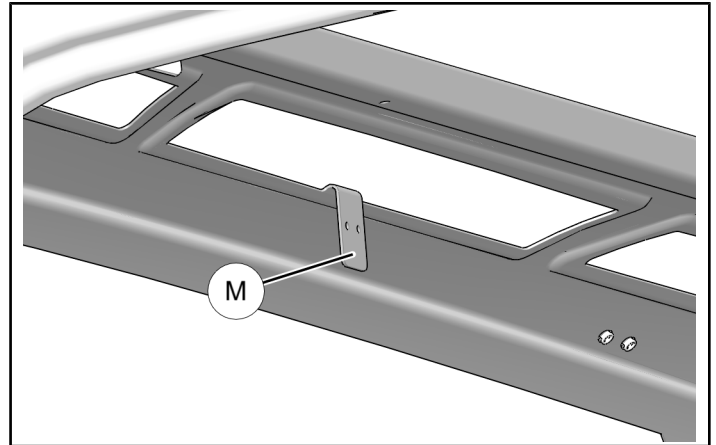
- b. Install arm assembly ② to rear bracket ⑤ using two screws ⑧.



- c. Slide mirror ① and arm assembly ② to desired location on ROPS upper mount plate ⑥, then tighten two screws ⑧.

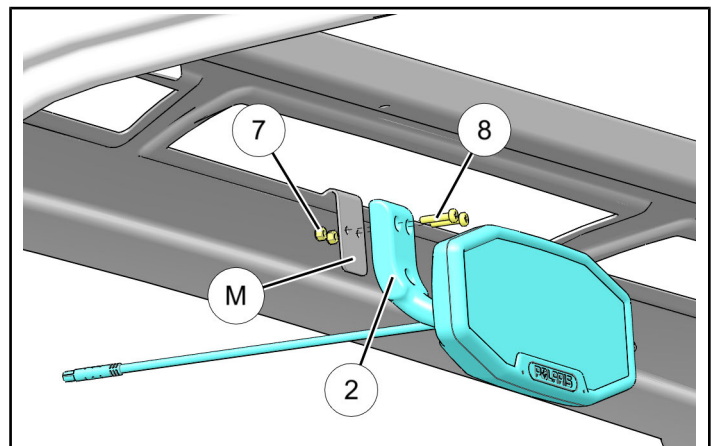
**Vehicles WITHOUT Windshield Wiper Kit (PN 2879754): MY17 and Newer**

- a. Enlarge two holes in ROPS tab ① using 1/4 inch drill bit.



- b. Install arm assembly ② to ROPS tab ① using two each screws ⑧ and nuts ⑦.

**NOTE**  
Brackets ④ and ⑤ are not used.



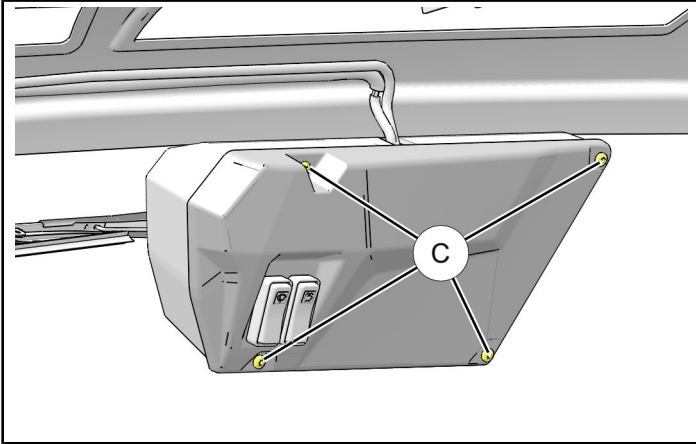
## Vehicles WITH Windshield Wiper Kit (PN 2879754)

### NOTE

If desired, mirror can be mounted to ROPS (next to windshield wiper housing on RH side of vehicle) instead of windshield wiper cover as described below. See previous section, Vehicles WITHOUT Windshield Wiper Kit (PN 2879754), for installation procedure.

Brackets ④ and ⑤ are not used.

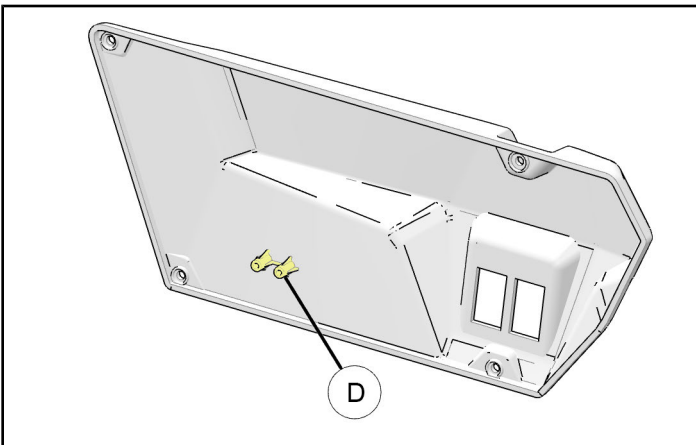
- a. Remove windshield wiper cover by removing four screws ③. Retain screws.



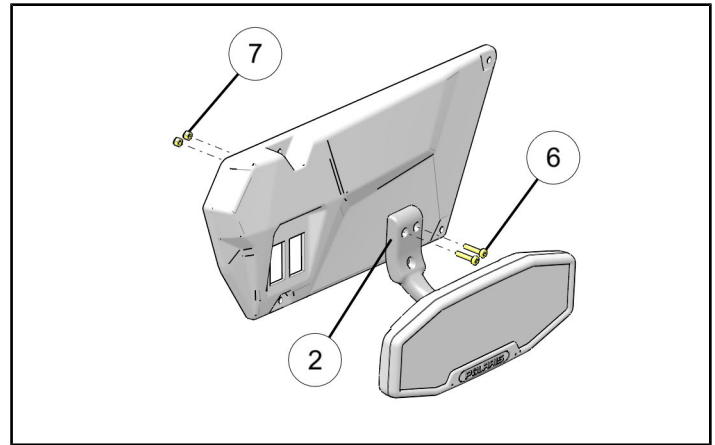
- b. Install mirror to windshield wiper cover.

### Covers WITH mirror mounting bosses

- i. Carefully drill two 1/4 inch holes completely through center of bosses ① and out opposite (finished) side.

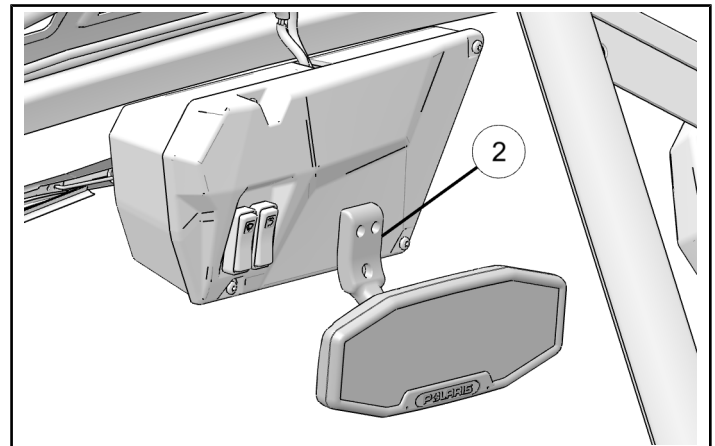


- ii. Install arm assembly ② to cover using two each screws ⑥ and nuts ⑦ through newly drilled holes.

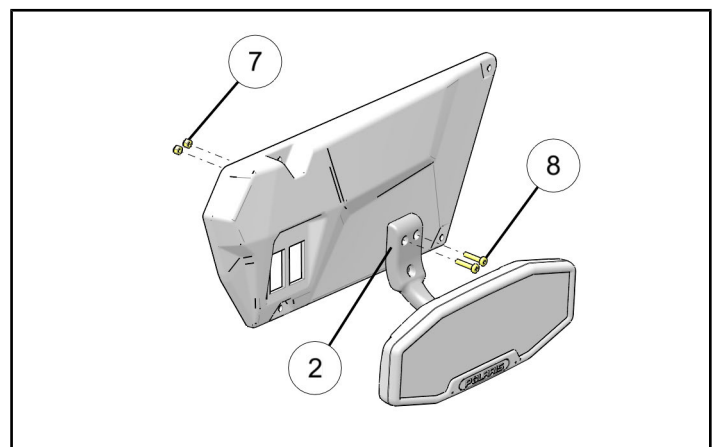


### Covers WITHOUT mirror mounting bosses

- i. While holding cover against windshield wiper housing, and using arm assembly ② as template, mark two (upper) mirror arm mounting holes.



- ii. Remove cover, then drill two 1/4 inch holes through cover at marked locations.  
iii. Install arm assembly ② to cover using two each screws ⑧ and nuts ⑦ through newly drilled holes.



- c. Reinstall windshield wiper cover (with attached mirror) using four retained screws ③.

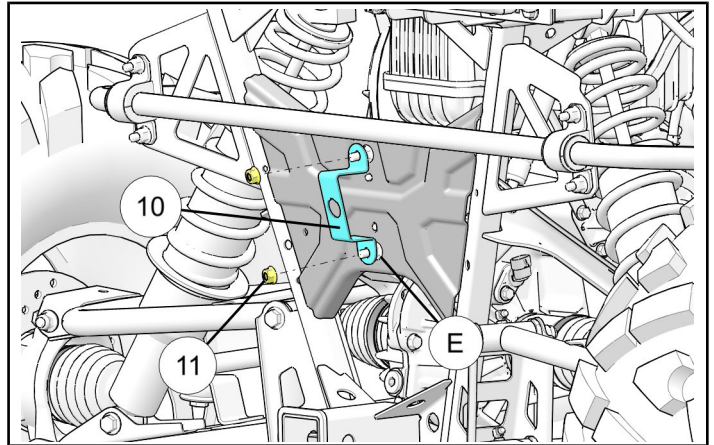
6. Route short mirror jumper harness (A) rearward through lower hole in arm assembly (2).



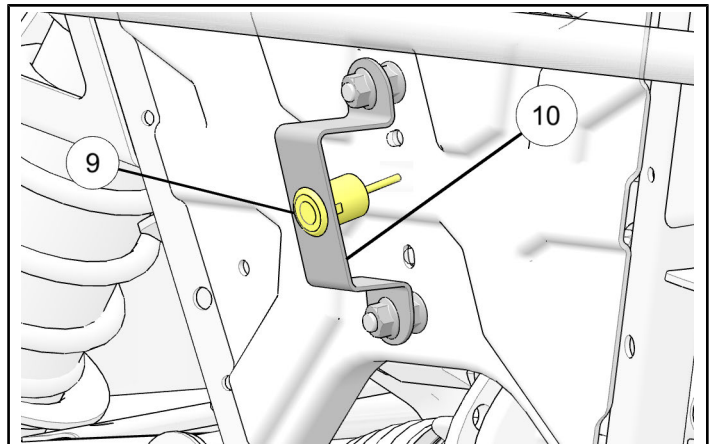
7. Install camera.
- a. Install camera bracket (10) to exposed driveline isolator mount bolts using two nuts (11). Ensure proper orientation: camera mounting surface should point slightly downward (not upward).

### IMPORTANT

Do NOT remove existing driveline isolator mount nuts (E). Bolt length is sufficient to accommodate bracket (10) and additional nuts (11).



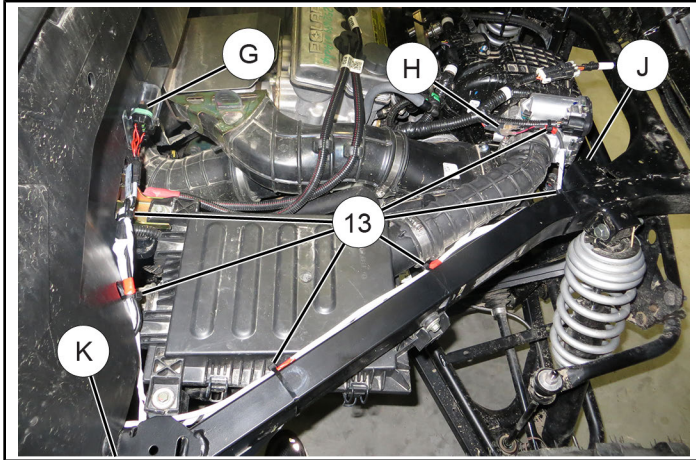
- b. Rotate spring tab ring on camera (9) so one of the four spring tabs aligns with arrow, orient camera so arrow is up, then insert camera into bracket (10) until spring tabs lock in place.



8. Install camera harness.
- Ensure engine is COLD, then lay rear portion of camera harness ⑫ across top of engine. Final (secured) routing will look as shown.

**NOTE**

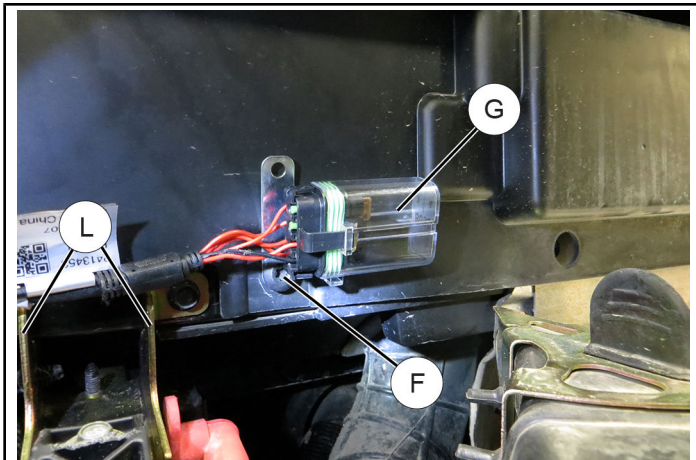
Observe locations of relay/fuse holder ⑥, vehicle backup system spade connectors ⑧, rear support plate ⑩, and frame gusset ⑫. Subsequent harness install steps will reference these locations.



- Remove existing screw ⑥ from lower edge of rear closeoff panel, then attach relay/fuse holder ⑥ to close-off panel using same screw. Orient relay/fuse block so wires exit towards LH side of vehicle.

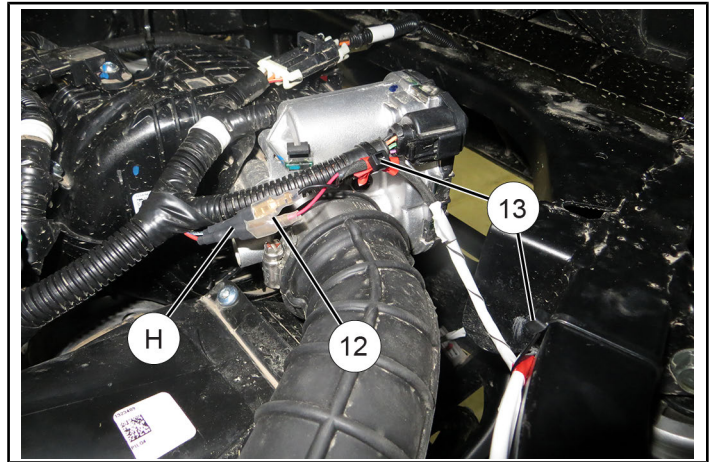
**IMPORTANT**

Ensure relay/fuse holder is secured as shown to prevent wires from chafing against top of bracket ⑬.



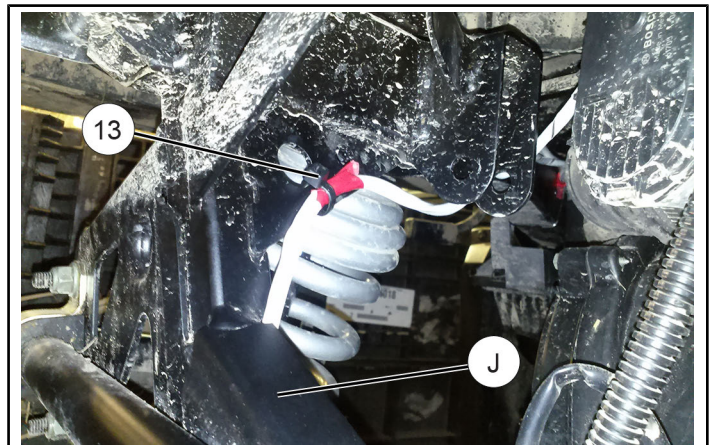
- Join two spade connectors on camera harness ⑫ to mating spade connectors ⑧ on vehicle backup system:
  - Red wire on camera harness to red/violet stripe wire on vehicle

- Black wire on camera harness to black/white stripe wire on vehicle

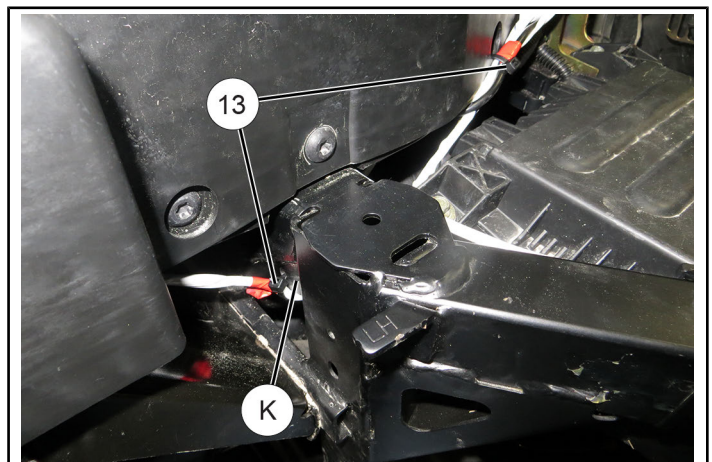


- Route camera connector down FORWARD side of rear support plate ⑩, wrap around bottom of plate, then up REAR side of plate to camera ⑨.

Join camera connector to camera jumper, then slide foam sleeve over connection.



- Route camera harness ⑫ so wires from relay/fuse block ⑥, spade connectors ⑧, and camera ⑨ all converge BENEATH left diagonal frame gusset ⑫ inboard of left side B-pillar (Crew: C-pillar).



- f. Route camera harness ⑫ up INTERIOR side of left side B-pillar (Crew: C-pillar), then forward along ROPS.



- g. Continue routing camera harness ⑫ forward along ROPS to top of left side A-pillar, then across and join to mirror jumper harness ①. Slide foam sleeve over connection.

Pre-attached harness extension provides 47 inches (1.2 m) of additional length. Detach extension if not needed.

#### TIP

If roof and headliner are installed, harness may be routed between roof and headliner. Ensure harness is adequately secured and not pinched between components.

#### CAUTION

Do NOT coil excess harness length at rear of vehicle. Contact with hot engine components or moving parts will damage harness.

- h. Starting from each end of camera harness ⑫ (mirror and camera) and working towards center of harness, secure harness using cable ties ⑬ and black tape (not included) to prevent contact with hot components, sharp edges, or moving parts. See previous Steps a-e for cable tie locations.

Coil and secure excess harness INSIDE vehicle cab between seat and rear close-off panel.

9. Reconnect black negative (-) cable to battery.  
10. Restore access.

## FEEDBACK FORM

A feedback form has been created for the installer to provide any comments, questions or concerns about the installation instructions. The form is viewable on mobile devices by scanning the QR code or by clicking [HERE](#) if viewing on a PC.

#### FEEDBACK FORM

