

# STANDARD FRONT BUMPER KIT

P/N 2879973

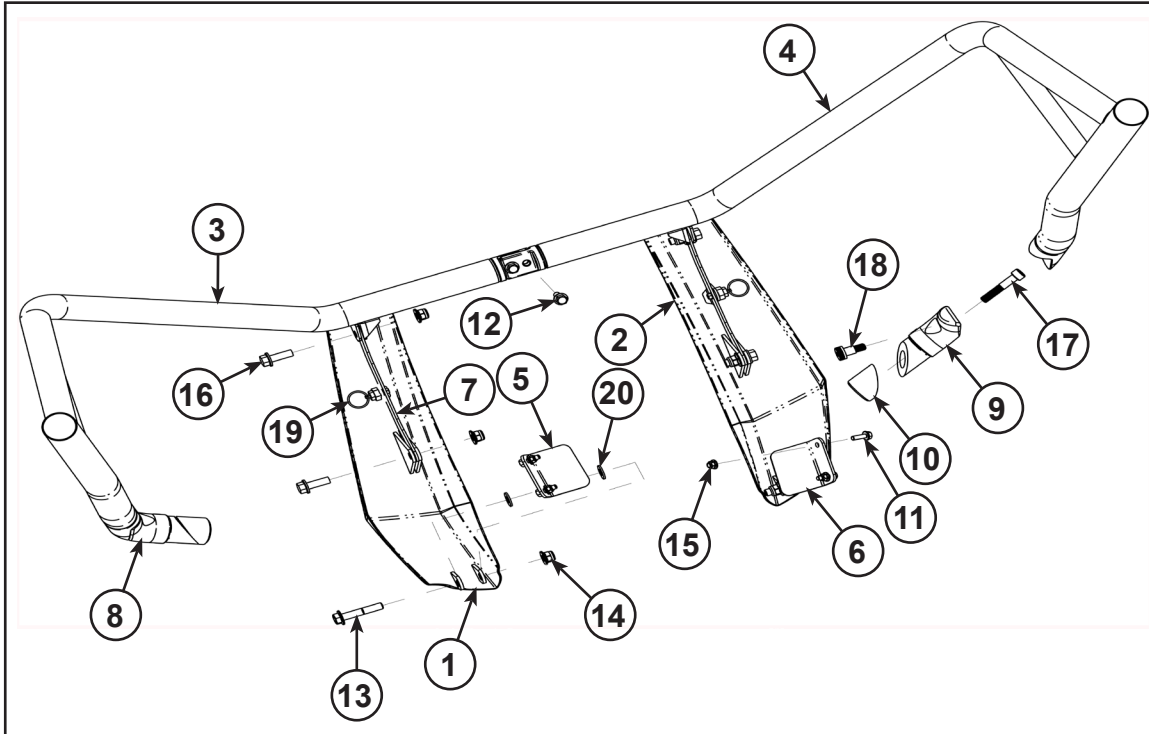
Application

RANGER 570, RANGER ETX

**POLARIS**

ENGINEERED PARTS  
ACCESSORIES & APPAREL

Before you begin, read these instructions twice and check to be sure all parts and tools are accounted for. Please retain these installation instructions for future reference and parts ordering information.



## Kit Contents (2880470):

<u>Ref</u>	<u>Qty</u>	<u>Part Description</u>	<u>Part Number</u>
1	1	Front Weld, Spar, LH	1020892
2	1	Front Weld, Spar, RH	1020893
3	1	Front Guard Weld, LH	1020894
4	1	Front Guard Weld, RH	1020895
5	1	Lower Weld, Pivot, LH	1020896
6	1	Lower Weld, Pivot, RH	1020897
7	2	Pivot Link	5260491
8	1	Outer Cast, Pivot, LH	5633265
9	1	Outer Cast, Pivot, RH	5633266
10	2	Lower Cast Mount	5633267
11*	4	Screw, M6x1.0x20, HX/FL	7516822
12*	2	Bolt, M8x1.25x20, Hex HD, Flange	7518702
13*	2	Screw, HXFL, M10x1.25x55, 10.9 ZOD	7519285
14*	6	Flange Nut, M10x1.25, Nyloc-Olive D	7547333
15*	4	Flange Nut, M6x1.0, Nyloc-Olive D	7547339
16*	4	Bolt-M10x1.25x30, Hex Flange-Olive D	-

<u>Ref</u>	<u>Qty</u>	<u>Part Description</u>	<u>Part Number</u>
17*	2	Screw, M10x1.25x55	-
18*	2	Screw, M10x1.25x28	-
19	2	Spring Pin	-
20*	4	Washer-22X10.5X2 mm, Nylon	-
	1	Instructions	9925496

Items marked (\*) are included in Hardware Kit PN 2205612.

**Tools Required:**

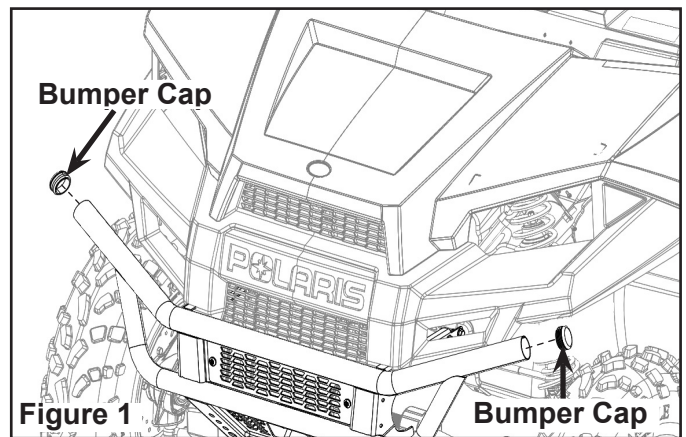
Metric Socket Set                      Torx Wrench Set

**APPROXIMATE ASSEMBLY TIME:** 15 minutes

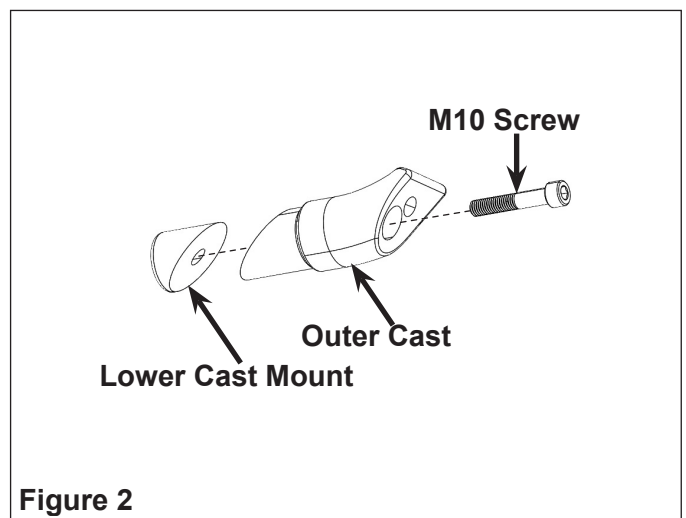
**IMPORTANT:** Your Polaris STANDARD FRONT BUMPER KIT is exclusively designed for your vehicle. Please read the installation instructions thoroughly before beginning. Installation is easier if the vehicle is clean and free of debris. For your safety, and to ensure a satisfactory installation, perform all installation steps correctly and in the sequence shown.

**INSTALLATION INSTRUCTIONS:**

1. Park the vehicle. Turn the key to "OFF" position and remove from the vehicle.
2. Remove bumper caps as shown. Retain it for reassembly. Figure 1.

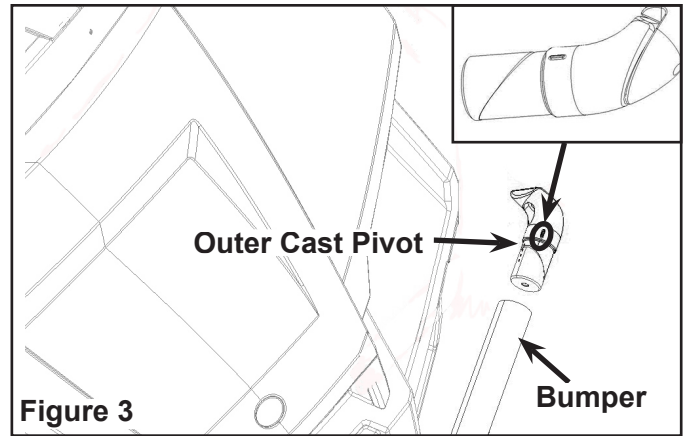


3. To assemble LH side front guard, attach outer cast (PN 5633265) on the lower cast mount by fastening M10 screw. Tighten screw to torque 40 ft. lbs. (54 Nm). Figure 2.

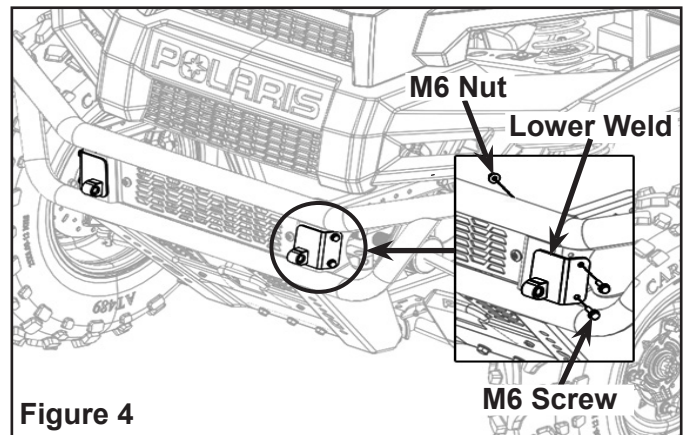


4. Fix the assembled outer cast pivot vertically to the bumper as shown in Figure 3.

**NOTE:** Marking tab on outer cast should be aligned vertically during assembly as shown in Figure 3.



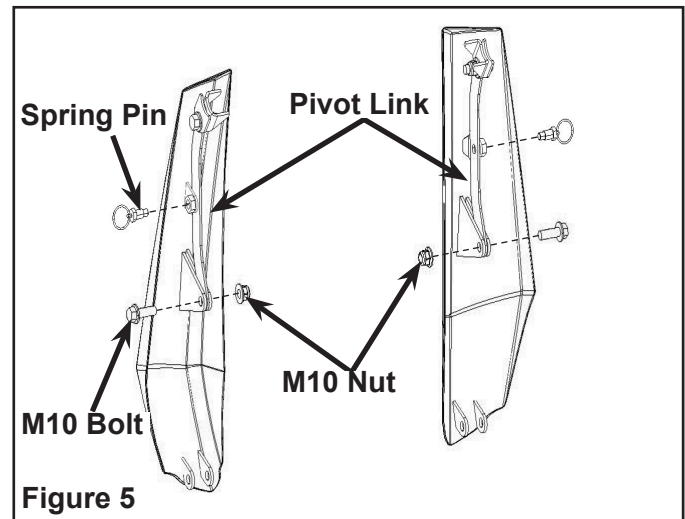
5. Install LH side lower weld (PN 1020896) on bumper by fastening two M6 screws (PN 7516822) and relevant M6 flange nuts (PN 7547339). Tighten screws to torque 40 ft. lbs. (54 Nm). Figure 4.



6. Install the pivot link (PN 5260491) on to the front welds and as shown in Figure 5. Install only lower M10 bolt and nut. Tighten screws to torque 40 ft. lbs.(54 Nm).

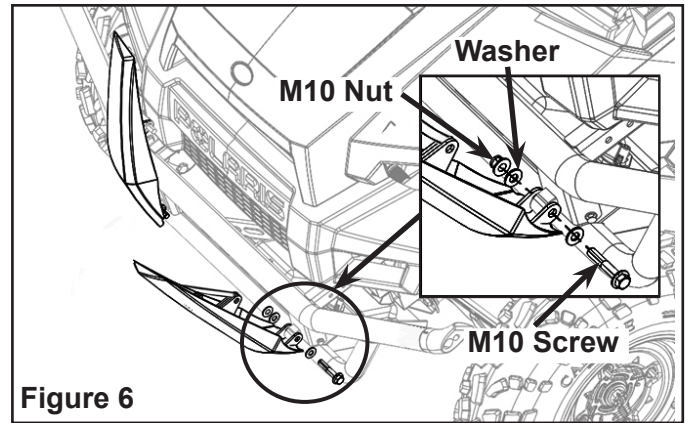
**NOTE:** Upper bolt will be installed while installing front weld on the guard.

7. Install the spring pin by tightening with the weld bolt on pivot link as shown in Figure 5.



8. Install the LH side front weld on bumper with M10 screw (PN 7519285), relevant washers and M10 nut (PN 7547333). Figure 6.

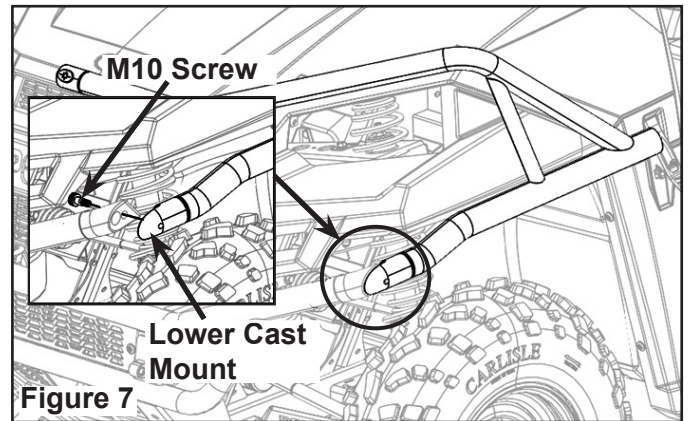
Repeat the same step for RH side front weld installation.



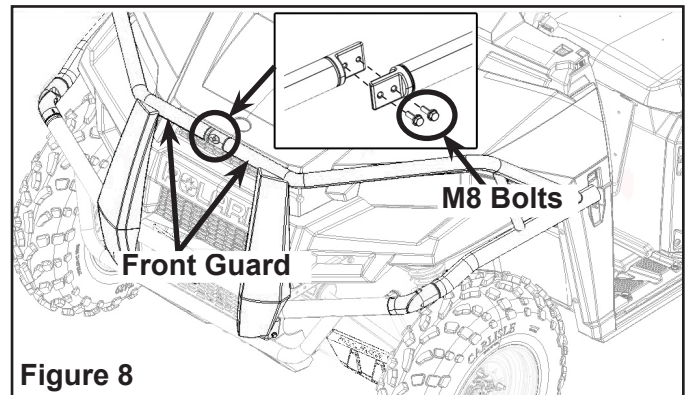
9. Install LH side front guard assembly by aligning lower cast mount to the outer cast pivot. Loosely install two M10 screws at lower weld bracket. Figure 7.

**NOTE:** Ensure tab position on the outer cast should be vertical.

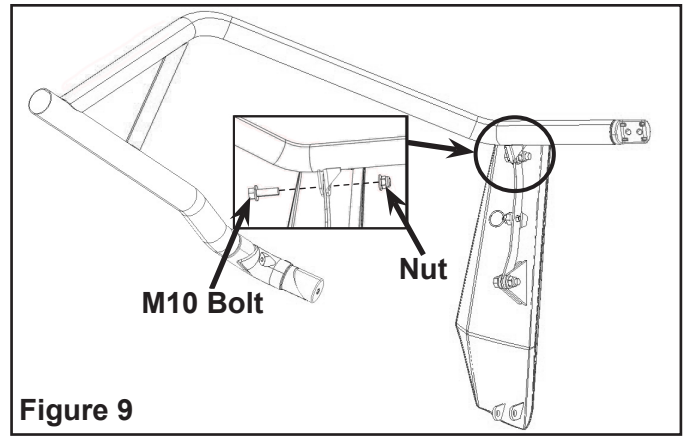
Repeat the same step to install the RH side front guard.



11. Align the LH and RH front guards and tighten with two M8 bolts (PN 7518702) as shown in Figure 8. Torque to screws 6 ft. lbs. (8.2 Nm).



10. Install front weld assembly on the LH front guard by attaching upper M10 bolt and washer as shown. Tighten screws to torque 40 ft. lbs.(54 Nm).  
Figure 9.  
Repeat the same step for RH side.



12. Torque M6 screws installed in Step 9-10 to 6 ft. lbs. (8.1 Nm) at this time.  
13. Insert the bumper caps on to the installed front bumper. Figure 10.

