

EXTREME ROCK SLIDER KIT



P/N 2879456, 2881586

APPLICATION

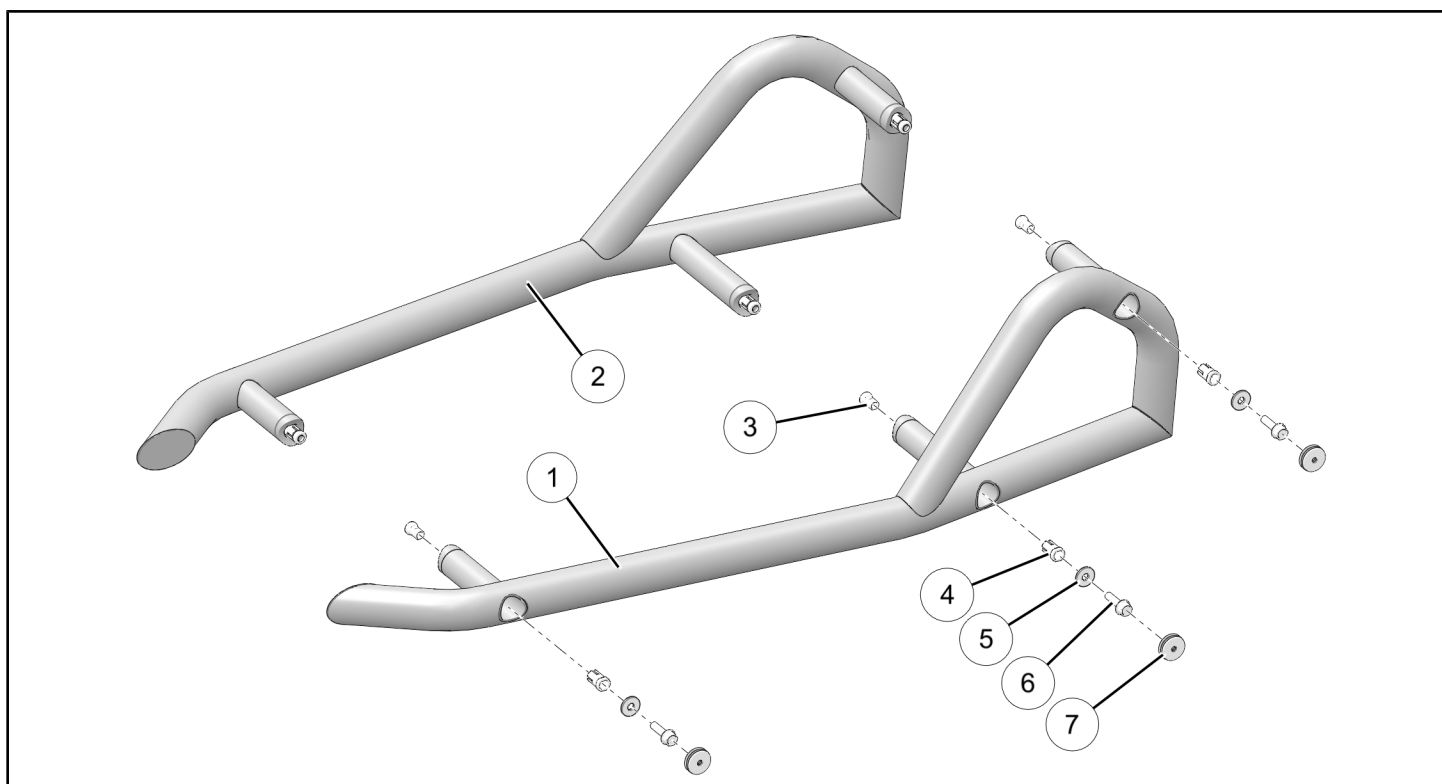
Verify accessory fitment at Polaris.com.

BEFORE YOU BEGIN

Read these instructions and check to be sure all parts and tools are accounted for. Please retain these installation instructions for future reference and parts ordering information.

KIT CONTENTS

This Kit includes:



REF	QTY	PART DESCRIPTION	PART NUMBER
1	1	Rock Slider, LH	-
2	1	Rock Slider, RH	-
3*	6	Wedge, Anchor	5632958
4*	6	Expansion Tube, Anchor	5337853
5*	6	Washer - 0.327 X 0.875 X 0.090	7556341
6*	6	Screw, Hex Flange - M8 X 1.25 X 30	7520234
7*	6	Plug, 1-1/8 inch	5450653
	1	Instructions	9924460

Items marked (*) are included in Hardware Kit PN 2205116.

TOOLS REQUIRED

- Safety Glasses
- Socket Set, Metric

- Torque Wrench

IMPORTANT

Your Extreme Rock Slider Kit is exclusively designed for your vehicle. Please read the installation instructions thoroughly before beginning. Installation is easier if the vehicle is clean and free of debris. For your safety, and to ensure a satisfactory installation, perform all installation steps correctly in the sequence shown.

ASSEMBLY TIME

Approximately 10–15 minutes

INSTALLATION INSTRUCTIONS

1. Shift vehicle transmission into “PARK”. Turn key to “OFF” position and remove from vehicle.
2. Expansion anchor assemblies ③ ④ ⑤ ⑥ are pre-installed to rock slider ①. Ensure each anchor assembly is fully seated in its welded socket A by gently attempting to rotate screw ⑥.

Apply only enough torque to ensure proper seating:

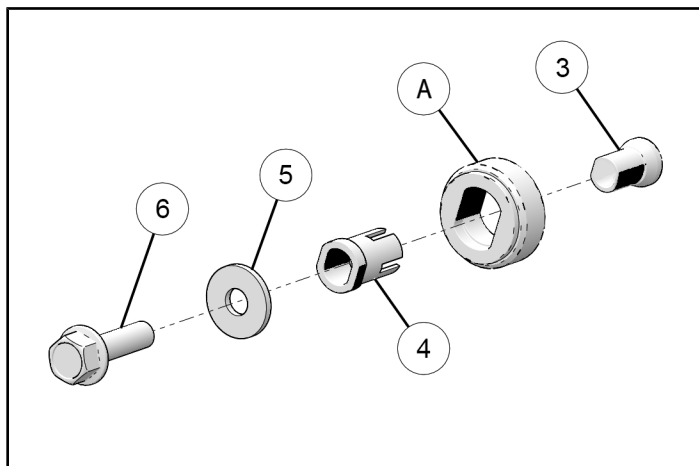
- EXTERIOR flat faces of wedge ③ align with INTERIOR flat faces of tube ④
- EXTERIOR flat faces of tube ④ align with INTERIOR flat faces of welded socket A

IMPORTANT

Do not over-torque screw to prevent anchor assembly from prematurely expanding. Failure to ensure flat alignment may result in incomplete fastener engagement and improper torque application.

NOTE

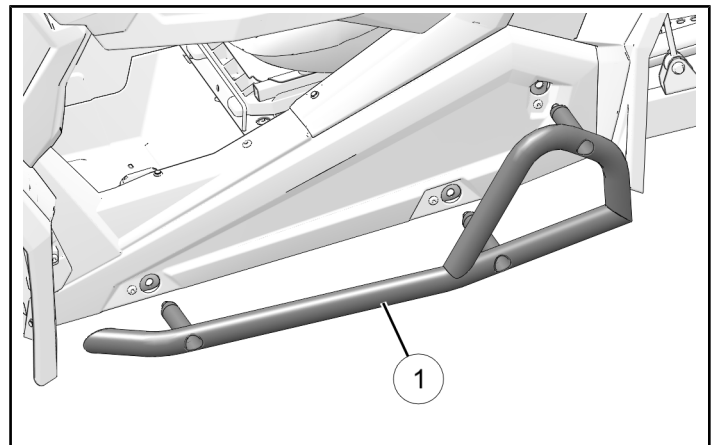
Rock slider mount tubing hidden for clarity.



3. Guide LH rock slider assembly ① into position so all three expansion anchor assemblies ③ ④ ⑤ ⑥ fully engage vehicle frame mounting holes.

IMPORTANT

Rock slider must be firmly seated against vehicle frame at all three locations before tightening screws. Anchor assemblies are not intended to draw slider and frame together.



4. While ensuring rock slider assembly ① is firmly seated against vehicle frame tighten three screws ⑥. Torque to specification.

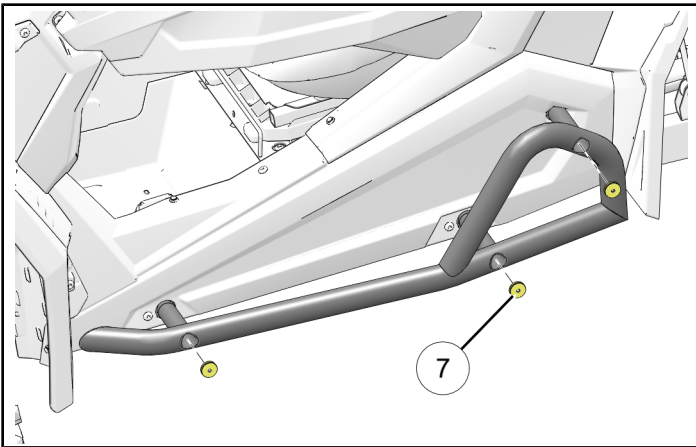
TORQUE

16 ± 2 ft. lbs. (22 ± 2 Nm)

NOTE

After anchor begins expanding repositioning slider may become difficult.

5. Insert three plugs ⑦ into rock slider assembly.



6. Repeat Steps 2–5 for RH side using RH rock slider assembly ②.

REMOVAL INSTRUCTIONS

NOTE

Subsequent rock slider re-installation requires new Hardware Kit PN 2205116 (sold separately).

1. Remove three plugs ⑦ from rock slider attach locations.

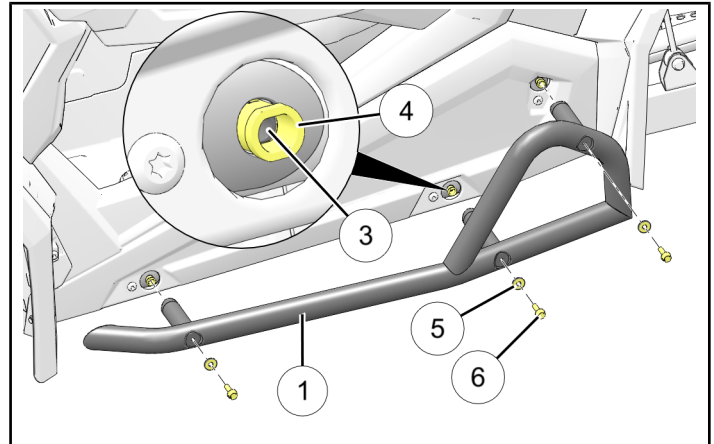
CAUTION

Rock slider weighs approximately 15 lbs. (6.7 Kg). Failure to adequately support rock slider during removal may result in personal injury or damage to equipment.

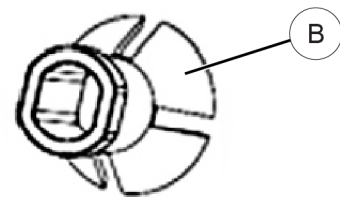
2. Remove three each screws ⑥ and washers ⑤ from rock slider attach locations. Remove rock slider.

NOTE

Rock slider may need to be wobbled back and forth to allow anchor expansion tubes ④ to pass through welded sockets ① in rock slider.



3. Using pin punch, drive wedge ③ inboard through expansion tube ④ into vehicle frame tubing at each attach point.
4. Using arc-joint pliers, grasp expansion tube ④ and remove from vehicle frame at each attach point. During removal tabs ⑧ will straighten. Discard old hardware.



FEEDBACK FORM

A feedback form has been created for the installer to provide any comments, questions or concerns about the installation instructions. The form is viewable on mobile devices by scanning the QR code or by clicking [HERE](#) if viewing on a PC.

FEEDBACK FORM

