

JACKPOT HEADLIGHT KIT

KIT P/N 2876411-156 (Chrome)

KIT P/N 2876411-266 (Black)



Application

2009-2010 Vegas®, Kingpin®, and Hammer®

Before you begin, read these instructions and check to be sure all parts and tools are accounted for. Please retain these installation instructions for future reference and parts ordering information. For your safety, and to ensure a satisfactory installation, perform all installation steps correctly in the sequence shown.

This kit includes:

Qty.	Part Description	Part No.
1	Headlight Housing	5135751-156 (Chrome) 5135751-266 (Black)
1	Headlight Cover	5135752-156 (Chrome) 5135752-266 (Black)
1	Headlight Assembly	2411133
1	Wire Harness	2411155
1	Screw, M10 x 40 Socket Head	7518153
6	Screw, M5 x 16 Socket Head	7516610
1	Screw, M4 x 13 Hex Flange Head	7518550
1	Headlight Isolator	5413404
1	Instructions	9920819

You will need to supply:

- #2 Phillips Screwdriver
- 7 mm Open-End/Box-End Wrench
- 15 mm Open-End/Box-End Wrench
- 15 mm Socket
- Torque Wrench

⚠ WARNING

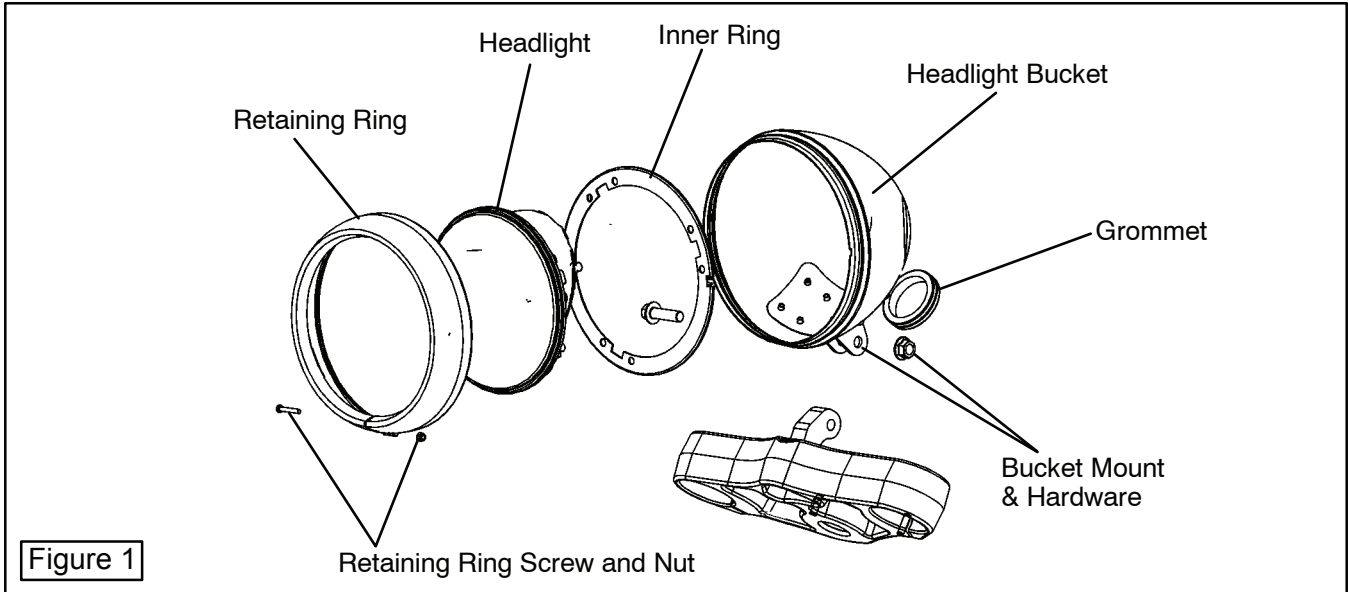
Care should be taken to be sure the motorcycle will not tip or fall while elevated or while on the sidestand. Serious injury or death can occur if the motorcycle tips or falls.

IMPORTANT: Before removing the existing headlamp assembly, take note of all wire harness routing for reassembly.

INSTALLATION INSTRUCTIONS

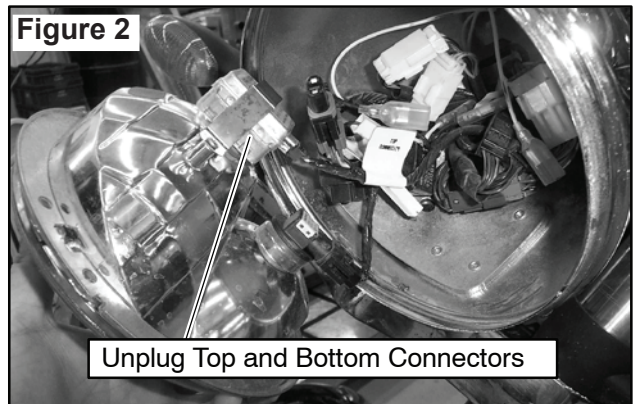
Headlight Removal

1. Remove the small screw in the retaining ring under the headlight with a #2 Phillips screwdriver and 7 mm wrench.
2. Support the lamp and remove the metal frame.
3. Gently pull out the lamp to expose the wire connections. The inner metal ring will become loose at this time.



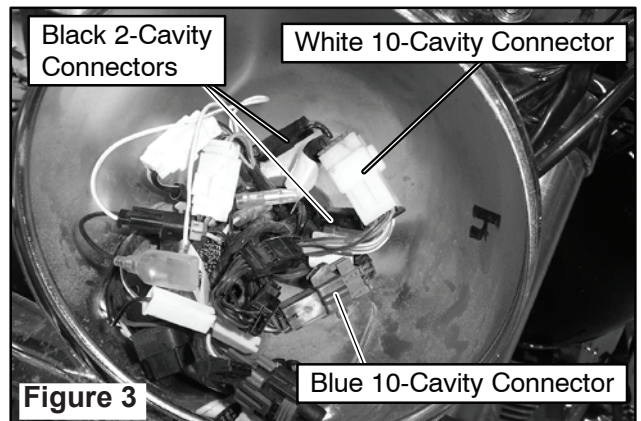
4. Unplug both connectors from the lamp assembly and remove the lamp.

NOTE: All 8-Ball Models: Unplug the short low beam harness that is currently installed on the vehicle and discard. This harness, and the harness (P/N 241155) included in this kit will not be used on 2006 8-Ball models.

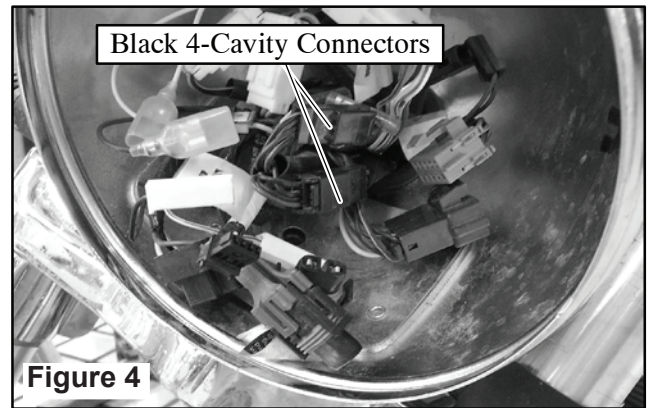


5. Unplug the left and right front turn signal harnesses (black 2-cavity connectors) and left and right control harnesses (**2003-2007:** Blue and white 10-cavity connectors; **2008 and Later:** Black 6 to 14 cavity connector) from the main wire harness inside the "bucket".

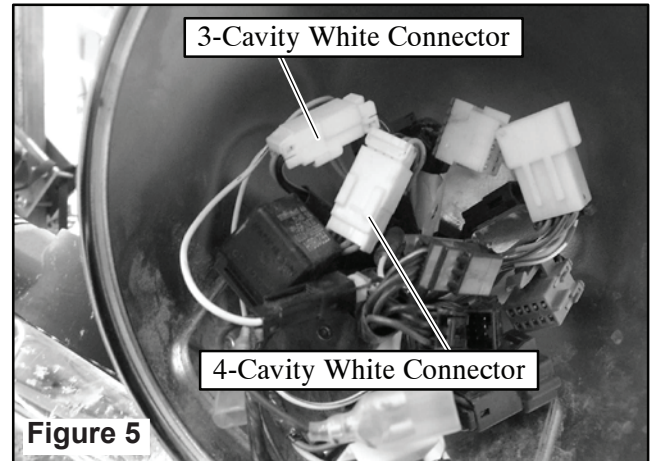
NOTE: These leads are labeled "Left" and "Right" on the main wire harness.



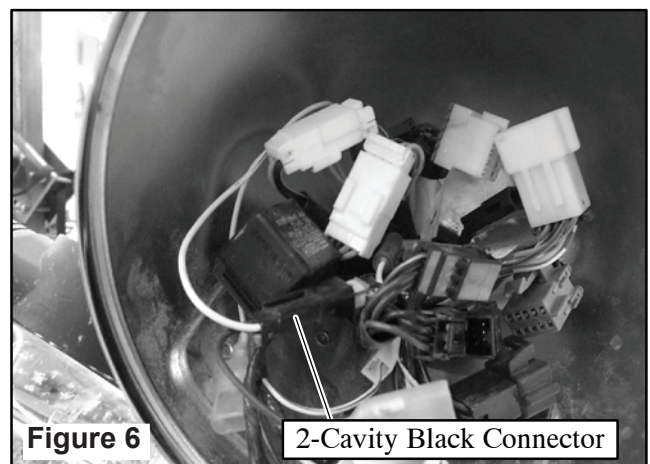
6. Unplug the control panel wire harnesses (two black 4-cavity connectors) from the main wire harness inside the “bucket”.



7. Unplug the speedometer wire harness (white 4-cavity connector) from the main wire harness inside the bucket.
8. Unplug the tachometer wire harness if equipped (white 3-cavity connector) from the main wire harness inside the bucket.

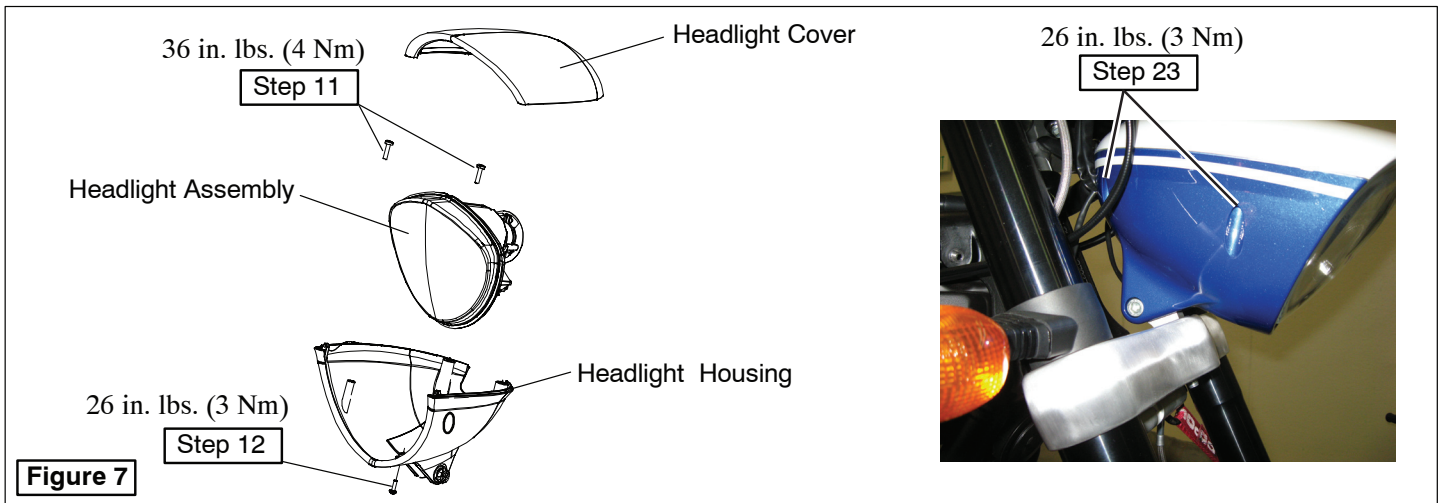


9. If the motorcycle is equipped with accessory auxiliary driving lights, unplug the driving light wire harness (small 2-cavity black connector) from the main wire harness inside the bucket.
10. Remove the bucket by removing the M10 x 35 hex screw and M10 hex nut from the bucket mount and removing all the leads of the wire harness from the bucket. Discard the screw and nut.



Headlamp Installation

11. Connect lower bulb to wire harness and place the headlight assembly in position inside the headlight housing and loosely install the two top M5x16 socket head screws shown in Figure 7.
12. Tip the housing upward and loosely install the single bottom M4x13 Phillips head screw. Figure 7.
13. Torque top screws to 36 in. lbs. (4Nm) and the lower screw to 26 in. lbs. (3 Nm).
14. Attach housing to headlamp mount with the isolator the new M10x40 screw. Figure 10. Do not fully tighten this fastener until headlamp adjustment is completed in Steps 24-30.
15. Connect the left and right front turn signal harnesses (black 2-cavity connectors) and left and right control harnesses (blue and white 10-cavity connectors) to the main wire harness inside the housing.
NOTE: These leads are labeled “Left” and “Right” on the main wire harness.
16. Connect the control panel wire harnesses (two black 4-cavity connectors) to the main wire harness.
17. Connect the speedometer wire harness (white 4-cavity connector) to the main wire harness.
18. Connect the tachometer wire harness (if equipped) (white 3-cavity connector) to the main wire harness.
19. Connect the lower lamp connector of the existing vehicle wiring harness to the lower headlight bulb on the new headlight assembly. (**For 2003-2006:** The top connector on the main wire harness is labeled “top connector” and will not be re-used).
20. Connect the wire harness included with the kit to the 2-pin accessory connector on the vehicle wire harness and to the upper headlight bulb on the new headlight assembly. **NOTE: Skip this step on ALL 8-Ball models and all 2003-2007 Vegas, Kingpin, Hammer and Jackpot models; this harness is not used.**
21. If applicable, connect the accessory driving light harness to the other 2-pin connector of the headlight kit wiring harness.
22. Check to be sure all switches, lights and controls work properly before installing the headlight cover.



23. Install the headlight cover and M5x16 socket head screws (two each side) and tighten securely. Adjust headlamp aim (Steps 24 -30).

Headlamp Adjustment

The headlamp should shine straight ahead of the motorcycle. The top of the headlamp High beam should be just below the center of the lamp at a distance of 25 feet (7.62 m).

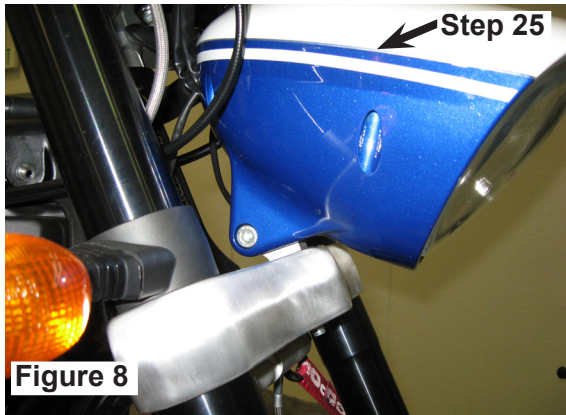


Figure 8

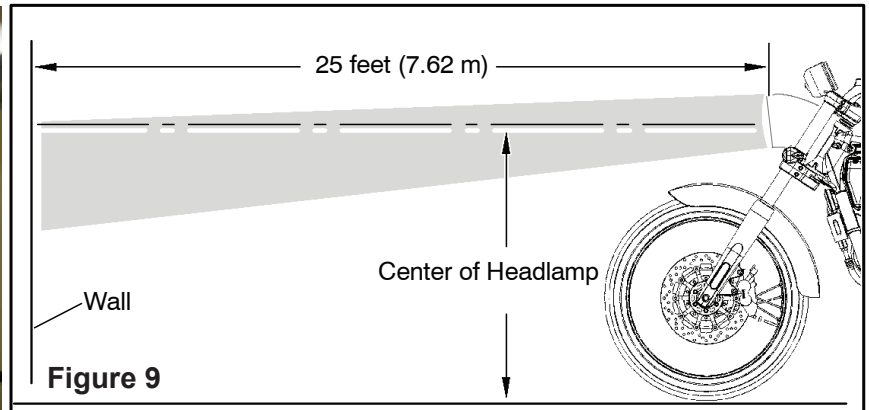


Figure 9

24. Place the seam of the housing in a horizontal position and tighten the headlamp mounting screw enough to hold it in place.
25. Check and adjust the tire pressure.
26. Verify suspension ride height is set properly for rider weight and load (refer to appropriate Service Manual).
27. Straddle the motorcycle in an upright position and sit in the operator's seat.
28. Set the ignition switch to the "On" position and set the headlamp to High Beam. Check the headlamp for correct aim.
29. To adjust the headlamp vertically:
 - Loosen the headlamp pivot bolt (A)
 - Adjust beam to proper vertical height
 - Tighten the nut (35 ft. lb. / 47.5 Nm)
 - Verify proper beam height adjustment
30. To adjust the headlamp horizontally:
 - Loosen the headlamp mount nut (B)
 - Adjust beam to proper horizontal position (straight ahead)
 - Tighten the nut (28 ft. lb. / 38 Nm)
 - Verify proper horizontal adjustment

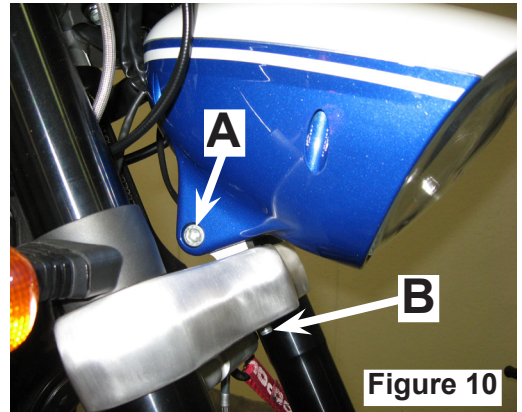


Figure 10

CAUTION: Ensure all switches, lights and controls work properly before operating the vehicle.